

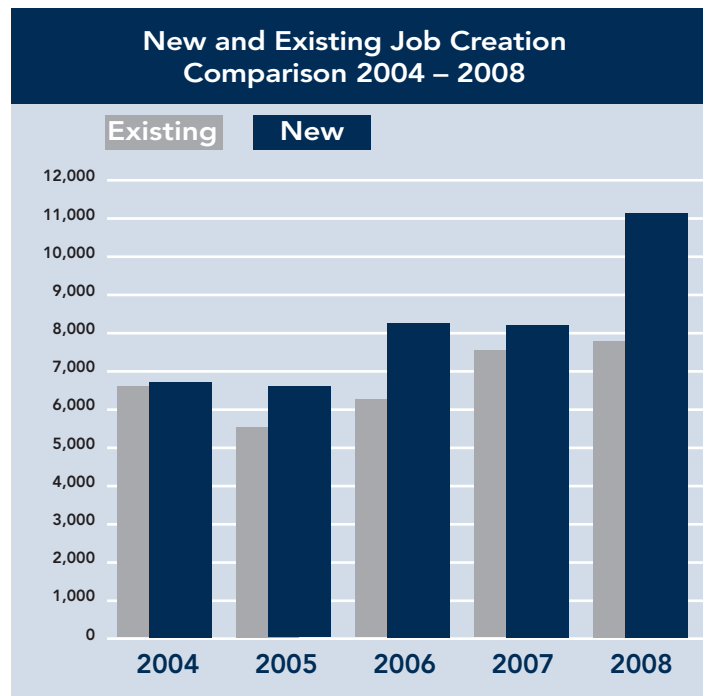
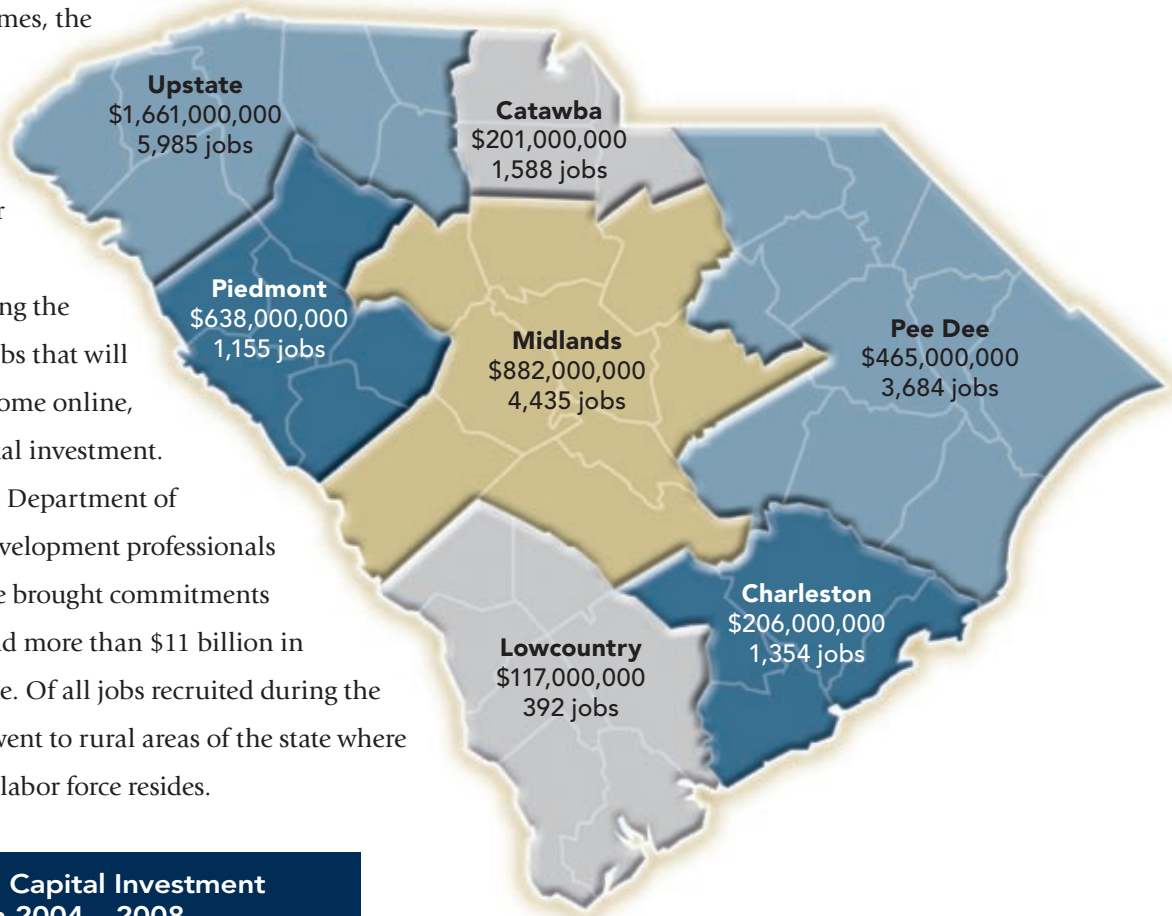
The image is a close-up, slightly angled view of the South Carolina state flag. The flag's design, featuring a palmetto tree and a crescent moon, is visible in shades of white and light blue against a dark blue background. A semi-transparent dark blue banner is positioned horizontally across the middle of the flag, containing the text "SOUTH CAROLINA DEPARTMENT OF COMMERCE" in white, bold, sans-serif capital letters.

SOUTH CAROLINA
DEPARTMENT OF COMMERCE

2008 ACTIVITY REPORT

SOUTH CAROLINA ATTRACTS EVEN MORE INVESTMENT IN 2008

Despite difficult economic times, the Department of Commerce and local economic development professionals delivered another record year in 2008 — recruiting nearly 19,000 new jobs, not including the thousands of construction jobs that will be created as these projects come online, and over \$4.1 billion in capital investment. The cumulative efforts of the Department of Commerce and economic development professionals over the past three years have brought commitments of nearly 50,000 new jobs and more than \$11 billion in capital investment to the state. Of all jobs recruited during the past three years, 29 percent went to rural areas of the state where only 21 percent of the state's labor force resides.



The Pollina Corporation, a corporate real estate consultant, ranks South Carolina as the fourth most Pro-Business State and has ranked the state among the top five for the last four years.

SOUTH CAROLINA'S ECONOMIC DEVELOPMENT ACCOMPLISHMENTS

2AM Group LLC
 AFL Telecommunications
 Ahlstrom Specialty Reinforcement LLC
 American Fujikura Ltd.
 American Prefabricated Drain
 American Yuncheng Plate Making Inc.
 American Titanium Works LLC
 Appalachian Underwriters Inc.
 Ashland Inc.
 Assurant Specialty Property
 Benefitfocus
 BMW Manufacturing Co.
 BorgWarner Inc.
 Bunting Graphics Inc.
 CareCore National LLC
 CeramTec North America Corp.
 Charles River Laboratories
 Champion Aerospace LLC
 CMC Steel
 Concentrix
 Concrete Design Inc.
 Continental Terminals Inc.
 Cross Country Home Services
 CSC Corp.
 Cummins Turbo Technologies
 DCFS USA LLC
 Delfin Group USA
 Deltex Medical Group
 Denmark Lumber
 Denmark Steel Inc.
 Domtar Paper Co.
 Dovetail Insurance Co.
 Dunline Rubber Products Co.
 Fabri-Kal
 Fisher Tank Company
 FITESA
 Golden State Foods
 H. J. Heinz Co.
 Home Depot
 Horsehead Corp.
 Iljin USA
 Industrial Ventilation Inc.
 Innegrity LLC
 Institute for Business & Home Safety (IBHS)
 International Knife & Saw Inc.
 I-Tech South LLC
 Jafza International
 Jeffrey Specialty Equipment Corp.
 Jemison Demsey
 Kainos Partners LLC
 Kaydon Corp.
 Koyo Corp.
 KMA Global Solutions
 Knights Apparel Inc.

Charleston
 Spartanburg
 Lee
 Spartanburg
 Chesterfield
 Spartanburg
 Laurens
 Richland
 Greenville
 Florence
 Greenville
 Spartanburg
 Oconee
 Chesterfield
 Beaufort
 Laurens
 Charleston
 Pickens
 Lexington
 Greenville
 Horry
 Berkeley
 Anderson
 Richland
 Charleston
 York
 Charleston
 Greenville
 Bamberg
 Bamberg
 York
 Richland
 Florence
 Greenville
 Lexington
 Laurens
 Lexington
 Florence
 Lexington
 Barnwell
 Spartanburg
 Spartanburg
 Greenville
 Chester
 Florence
 Oconee
 Charleston
 Spartanburg
 Sumter
 Laurens
 Sumter
 Richland
 Spartanburg
 Spartanburg

Lear Corp.
 Life Stone Materials LLC
 Lift Technologies Inc.
 Lincoln Energy Solutions
 LSP Automotive Systems LLC
 M.C. Tool LLC
 Master Precision Global LLC
 Metglas Inc.
 MGA Research Corp.
 Michelin North America Inc.
 Monster Worldwide Inc.
 North Safety Products
 Nucor Corp.
 Olympic Steel Inc.
 Osage Bio Energy LLC
 Ortec Inc.
 Palmetto Synthetics LLC
 Parsons Corp.
 PBI Performance Products Inc.
 Performance Fabrics and Fabrics LLC
 Pioneer Boats
 Platronics Seals
 Primesouth Inc.
 QVC
 REMA USA LLC
 Regional Utility Services Inc.
 Ridge Environmental
 Rocking "R" International Inc.
 Rollcast Energy Inc.
 Sandvik Inc.
 SEM Products Inc.
 Shaw Industries Group Inc.
 South Strand Contractors Inc.
 Sloan Construction Co.
 SRP Federal Credit Union
 Staubli Corp.
 Strategic Resource Co.
 Sykes Enterprises Inc.
 TTI North America Inc.
 Target Corp.
 Thrace-Linq Inc.
 The Timken Co.
 Titanium Solutions Inc.
 Tri Tech USA Inc.
 Trulite Inc.
 Turnstyle Enterprises
 Urban Outfitters Inc.
 URS Corp.
 VELUX Greenwood Inc.
 Wellman Inc.
 West Star Aviation Inc.
 Williamsburg Recycling LLC
 W.W. Grainger Inc.
 Zodiac of North America Inc.

Spartanburg
 Anderson
 Oconee
 Anderson
 Union
 Greenville
 Spartanburg
 Horry
 Spartanburg
 Lexington
 Florence
 York
 Darlington
 Sumter
 Union
 Greenville
 Williamsburg
 Aiken
 York
 Williamsburg
 Colleton
 Spartanburg
 Fairfield
 Florence
 Greenville
 Spartanburg
 Allendale
 McCormick
 Newberry
 Oconee
 York
 Lexington
 Georgetown
 Union
 Aiken
 Spartanburg
 Richland
 Greenwood
 Pickens
 Kershaw
 Dorchester
 Union
 Lancaster
 Pickens
 Richland
 Georgetown
 Edgefield
 Lancaster
 Greenwood
 Florence
 Lexington
 Williamsburg
 Greenville
 Dorchester

*List only includes public announcements and projects that Commerce was involved in recruiting.

South Carolina was named among the top ten best states to do business by Chief Executive's annual poll of readers.

Total Capital Investment and Jobs

	Investment	Jobs
2007	\$4,045,047,444	15,666
2008	\$4,169,751,439	18,993

INDUSTRY RECRUITING SUCCESS

South Carolina, once again, has proven to be a preferred destination. In 2008, companies such as American Titanium Works LLC, FITESA and Horsehead Corp. announced new facilities in South Carolina, while Monster Worldwide Inc.



monster[®] broke ground on a new state-of-the-art customer service facility in Florence County. Coca-Cola and United Resource

Recovery Corp. (URRC) partnered to open the world's largest plastic bottle-to-bottle recycling plant in Spartanburg County and BMW



Manufacturing Co. announced the largest ever investment for their Spartanburg County factory, increasing investments of the BMW Group in its South Carolina operations to \$4.2 billion.



“Spartanburg had a record year in 2008 and we are pleased that our successes contribute to the state of South Carolina as a whole.” - Carter Smith, CECD, executive vice president, Economic Futures Group of the Spartanburg Area Chamber of Commerce

“In 2008, Florence County had the largest job creation in over 25 years. We also saw the largest percentage increase in per capita income in the state.”

- Joe W. King, executive director, Florence County Economic Development Partnership

South Carolina's **BMW** and **American Titanium Works** announcements were among the winners for this year's Corporate Investment and Community Impact (CiCi) Awards, presented by *Trade & Industry Development* magazine. These announcements were two of only 15 finalists for the awards.



In March 2008, Governor Sanford and Secretary Taylor joined Frank Peter Arndt and Josef Kerscher of BMW in announcing that the company will invest \$750 million into BMW's new factory and will add 500 new jobs on-site. The investment is already having a positive impact in the community supporting over 600 construction jobs today.

Capital Investments

Company	County	Total Capital Investment
BMW Manufacturing Co.	Spartanburg	\$750,000,000
American Titanium Works LLC	Laurens	\$422,000,000
Rollcast Energy Inc.	Newberry	\$170,000,000
Osage Bio Energy LLC	Union	\$161,500,000
FITESA	Laurens	\$120,000,000
H.J. Heinz Co.	Florence	\$105,000,000
Michelin North America Inc.	Lexington	\$90,000,000
Horsehead Corp.	Barnwell	\$87,000,000
Target Corp.	Kershaw	\$73,000,000
Shaw Industries Group Inc.	Lexington	\$60,000,000

Job Creations

Company	County	Total Jobs
BMW Manufacturing Co.	Spartanburg	500
URS Corp.	Lancaster	400
Cross Country Home Services	Anderson	350
H.J. Heinz Co.	Florence	350
Monster Worldwide Inc.	Florence	350
Shaw Industries Group Inc.	Lexington	350
American Titanium Works LLC	Laurens	320
Computer Sciences Corp.	Richland	300
Home Depot	Lexington	300
Titanium Solutions Inc.	Lancaster	300

2008 HIGHLIGHTS – MAKING AN IMPACT ON SOUTH CAROLINA

- Companies, business leaders and industries were honored throughout the state during Industry Appreciation Week. The week kicked off with the 18th **INDUSTRY APPRECIATION WEEK** Annual Ambassadors for Economic Development awards ceremony at the Governor's Mansion where 49 Ambassadors for Economic Development were recognized for their efforts to further economic activity in South Carolina.

- Commerce's Business Services Division, which provides services and support for existing and expanding companies in South Carolina, led the effort to connect Nuvera and South Carolina-based Küsters Zima. The companies will partner together to fabricate generators that can produce hydrogen fuel for Nuvera's fuel cells.

- The South Carolina Department of Commerce, the South Carolina Department of Health and Environmental Control and the South Carolina Energy Office sponsored the development of the Green Building Directory in conjunction with the Sustainability Institute.



- The South Carolina Aeronautics Commission issued 28 capital improvement state grants to airport sponsors totaling \$2,595,678. In addition, the Division of Aeronautics provided \$602,422 of airfield pavement and vegetation control maintenance services to airport sponsors.

- South Carolina Public Railways partnered with Wilbur Smith to develop a statewide rail plan for South Carolina that will examine the state's existing infrastructure — including the rail system, the interstate system, access to the Port of Charleston and the future Jasper Port, as well as large industrial sites with potential to be developed into mega sites. The rail plan will identify rail opportunities to meet the state's current and future economic development needs including improving rail access to support large scale industrial growth. This study is expected to be completed by early 2009.

- The South Carolina Rural Summit was held in the Upstate with record attendance. To break from a traditional classroom setting and provide a more hands-on learning experience, off-site educational sessions were offered and held at CU-ICAR, Oconee Nuclear Station and the Heritage Corridor Rolling Classroom.

- Commerce played a key role in defining areas of the state with the greatest need for the U.S. Department of Housing and Urban Development's new Neighborhood Stabilization Program; through which South Carolina will

receive \$44.7 million to offset the impacts of foreclosures on communities and preserve affordable housing.

- Community Development Block Grants (CDBG) continued to support workforce development by awarding \$2.7 million for Quick Jobs Development Centers in Allendale and Fairfax, two of the only remaining counties with no technical college presence, and \$1.4 million for computer training centers at libraries in six rural communities. Quick Jobs Development Centers will allow residents to obtain workforce training and upgrade skill levels, thereby improving their ability to retain existing jobs or compete more successfully for new jobs.

Workforce Development – Committed to Enhancing South Carolina's Workforce

CNBC ranks South Carolina's workforce second in the nation – based on quality and availability of workforce, as well as workforce training.



- Jobs for America's Graduates-South Carolina (JAG-SC), an affiliate of the highly successful national Jobs for America's Graduates program, received recognition as a "Top State Organization for Multi-Year Programs" and a decreased drop-out rate. Youth participants in this program have raised their GPAs and passed more classes, while decreasing their absences and suspensions.



- The JAG-SC program was awarded a \$200,000 grant from the AT&T Foundation to help expand the program to a new high school in the Midlands. JAG-SC was chosen from among approximately 2,000 other applicants nationwide for the grant award.

- The Workforce Investment Act program experienced participation increases in each customer category, adults, dislocated workers and youth, over the prior year. In addition, all performance measures were met or exceeded as defined by the U.S. Department of Labor.



- The state's Incumbent Worker Training (IWT) program gave companies the training needed to retain existing workforce and expand current facility capabilities. Last year, a total of \$2,290,481 in statewide funds were invested in IWT partnerships. More than 1,380 jobs were saved, 608 new jobs created and each dollar invested yielded approximately \$14 in wages.

Forbes ranks South Carolina third best in 2008 for its pro-business regulatory environment.

INTERNATIONAL SUCCESS

- Foreign investment comprised 44 percent of all capital investment in 2008 and accounted for 28 percent of all jobs recruited.
- Commerce led trade missions to Japan, Brazil/Argentina, China and Israel. Commerce also assisted eight companies with a reported \$16.1 billion in export sales to such countries as Turkey, Poland, China, Brazil and Israel, with several companies not disclosing their sales figures.
- The Department of Commerce worked to recruit FITESA, a nonwoven fabric manufacturer, during the agency's trade mission to Brazil in June 2008. Commerce's efforts were successful, and FITESA will be the inaugural tenant of the Owings Industrial Park in Laurens County. The company will invest \$120 million and create 80 jobs at its new South Carolina facility.



John Ling, Managing Director of South Carolina's China office, accepted an award on behalf of South Carolina's efforts to assist Chinese companies in investing abroad. South Carolina was one of only three foreign economic development and investment agencies to be recognized at the "Chinese Enterprises Going Global" National Contribution Award Appraisal Event.



Row 1 from left: **Bill Cronin** - Sales Manager, 20+ years experience in international business; **Harris Chewning** - Project Manager, Wofford graduate, Magna Cum Laude; Row 2 **Ford Graham** - Project Manager, JD, IMBA, hometown Camden; **Morgan Harrell** - Project Manager, double major at College of Charleston, hometown Walterboro; **Sarah Shelley** - Project Manager, Wofford graduate, hometown Myrtle Beach; **Tony Allen** - Project Manager, 13+ years experience in local & regional economic development; Row 3 **Wayne Fritz** - Sr. Project Manager, 30+ years experience, hometown Charleston; **Lanford Holloway** - Project Manager, Emory University graduate, hometown Columbia; **Bob Marriott** - Sr. Project Manager, 40+ years experience, hometown Columbia; **Hank Taylor** - Sr. Project Manager, Brig. Gen., USAF (Retired), hometown Charleston; **John Scarborough** - Sr. Project Manager, based out of S.C. Ports Authority, 15+ years experience, hometown Moncks Corner; **Jack Ellenberg** - Deputy Secretary for New Investment, masters degree from Clemson University, 13+ years experience; **Martha Albergotti** - Project Manager, Wofford graduate, Cum Laude, hometown Anderson.

According to *Site Selection* magazine, South Carolina leads all U.S. states with Foreign Direct Investment (FDI) accounting for 7.9 percent of its jobs in terms of FDI share of employment.

"Our project managers are simply the best in the business. They are smart, professional and take great pride in their work. Most importantly, they take the time to truly understand the objectives of the companies recruited to South Carolina."

- Joe E. Taylor, Jr., Secretary of Commerce