



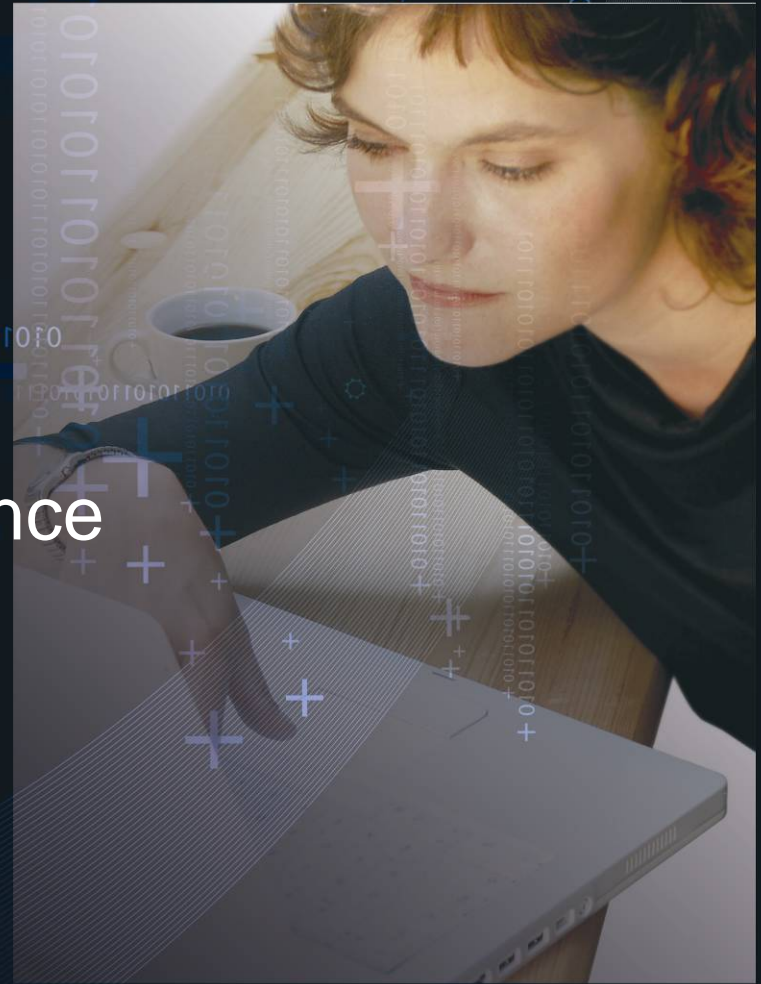
# Delivering Personal Broadband and the Mobile Internet

South Carolina  
October 2007

**clearw're®**  
wireless broadband

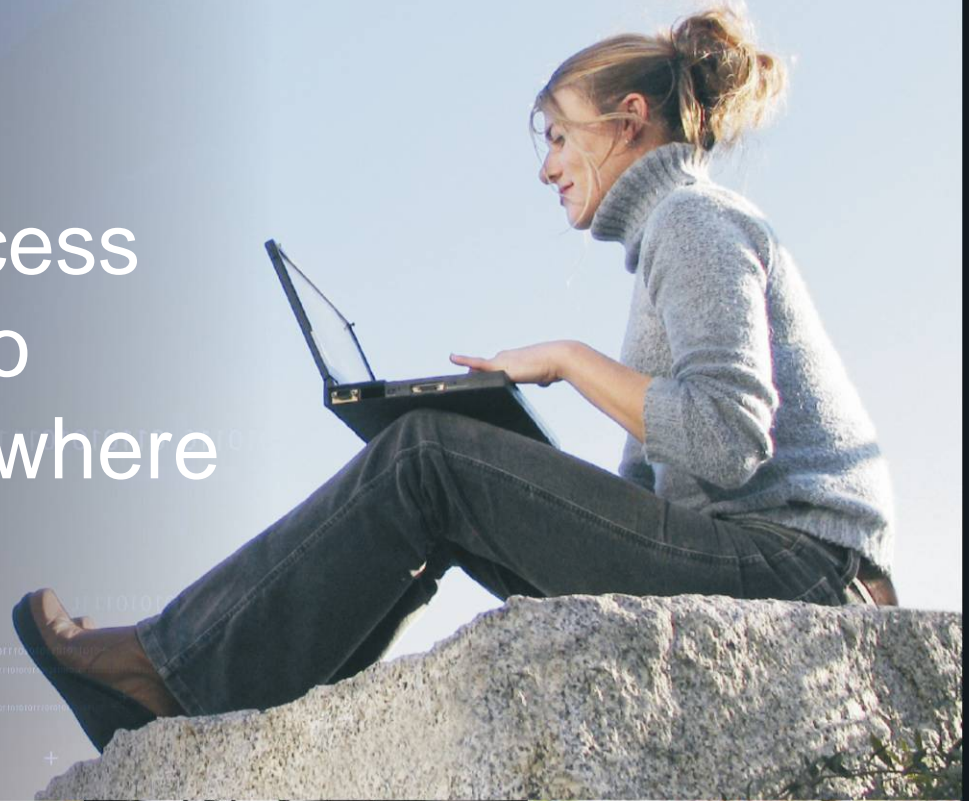
# We believe we are at another defining moment, prompted by innovation and driven by consumer demand

- Freedom and Flexibility
- True Broadband Experience
- Simplicity
- Reliability
- A Good Value





Mission: Provide the  
Simplest Way to Access  
All the Internet has to  
Offer – Anytime Anywhere



clearw<sup>ire</sup><sup>®</sup>  
wireless broadband



# Networks Operating in 420+ Municipalities Around the Globe and Growing Covering More than 11.6 Million People

**RURAL**

**SUBURBAN**

**URBAN**



**clearw<sup>ire</sup>**  
wireless broadband

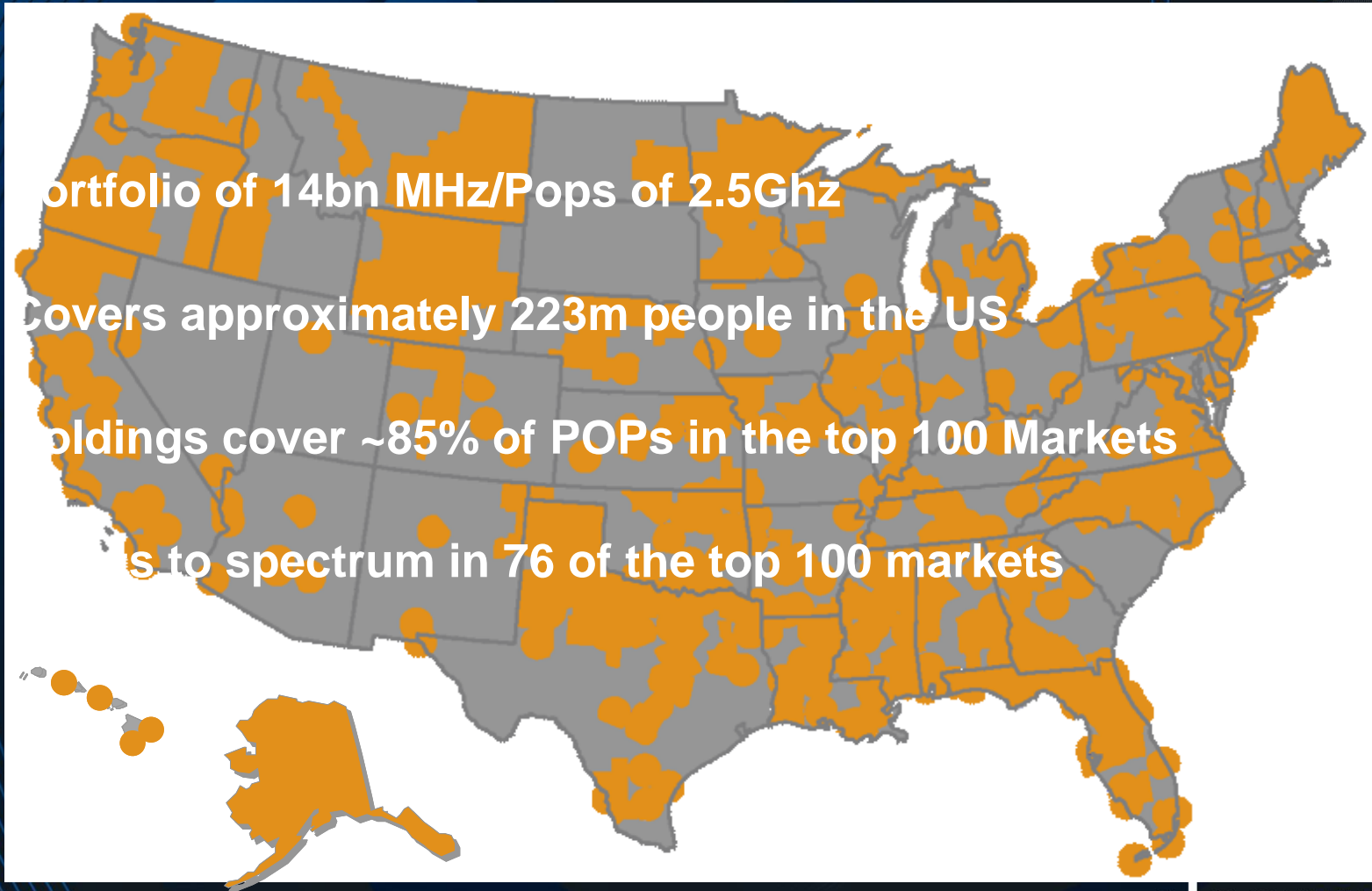
# Current and Planned U.S. Markets Through Q3 2007





# Robust US Spectrum Footprint

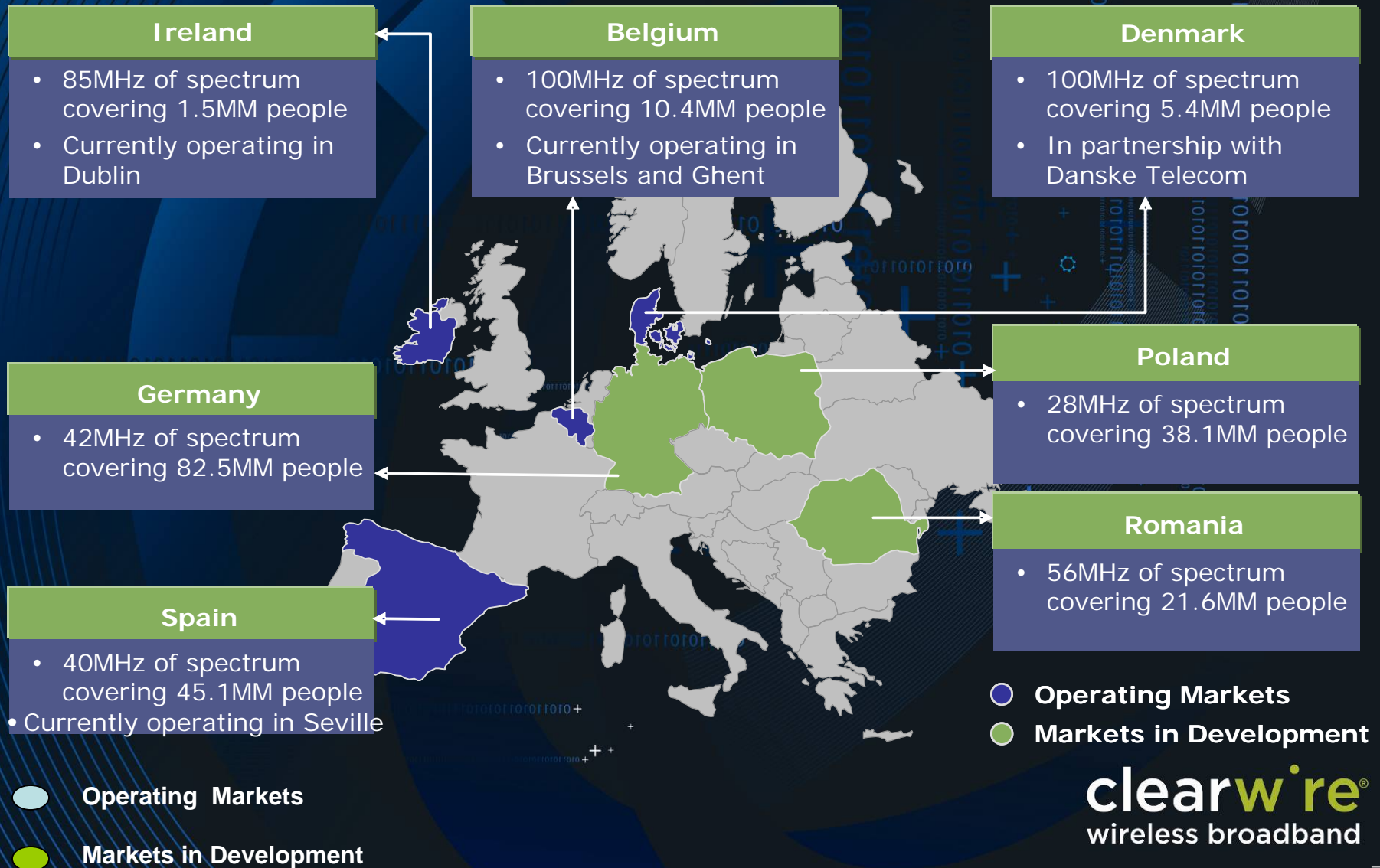
- Portfolio of 14bn MHz/Pops of 2.5Ghz
- Covers approximately 223m people in the US
- Holdings cover ~85% of POPs in the top 100 Markets
- Access to spectrum in 76 of the top 100 markets



Spectrum includes owned, leased and pending acquisitions

# European Spectrum Holdings

*8.7 Bn MHz-POPs*





# Personal Broadband Services Category



- It's about connecting **You**
  - Eliminating the Structure and Confinements
- Changing the Internet Experience **Forever**
- The Power of Youth
  - Younger Generations & Consumers vs. Big Business



# Today's Services are Just the Beginning

CPE



PC Card



Embedded WiMAX



clearwire

Today

2H'07

2008

- ▶ *With Intel and Motorola's collaboration Clearwire has a path to high volume and low cost*
- ▶ *Intel's efforts in laptop integration driving thinking on new embedded devices*
- ▶ *Standardized technology will lead to proliferation of new devices*

clearwire®  
wireless broadband

# 2007 Personal Broadband Services

## Residential Gateway Offering

Avg. Downlink Speed: 768Kbps – 2Mbps  
Burst Speed: Up to 1.5Mbps – 4Mbps  
Monthly Rate: \$24.99 – \$49.99

## PC Card Offering

(Available late Q3/ Early Q4)

Avg. Downlink Speed: 1 Mbps – 1.5 Mbps  
Price Range: \$49.99 - \$59.99

## Residential VoIP Offering

Unlimited Plan \$29.99 <sup>(1)</sup>

(1) \$29.99 for first 12 months, and \$34.99 thereafter



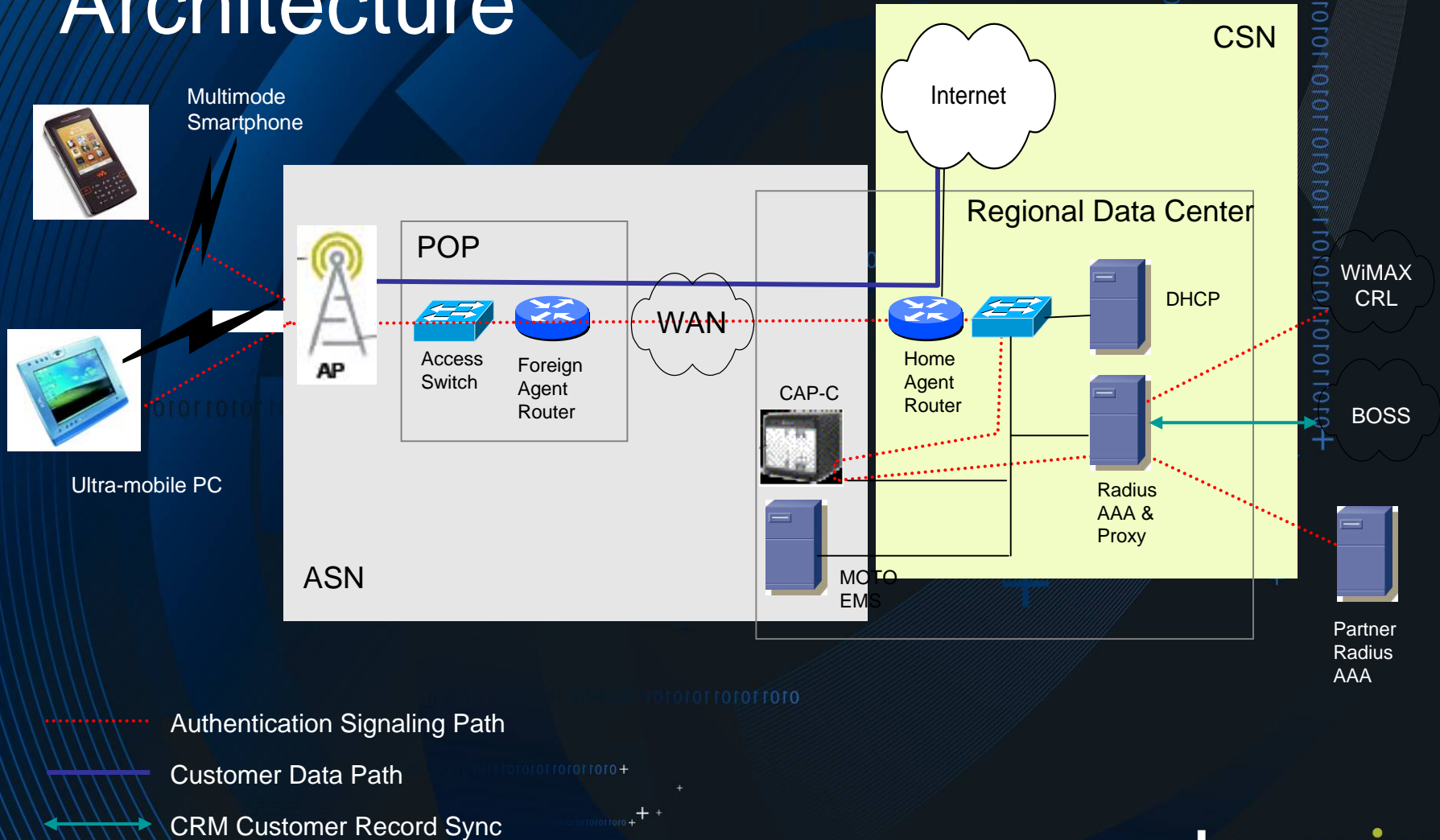
**clearwire®**  
wireless broadband



# VOIP Systems Enhancements 2007

- As of July 2007, 28 Operational VOIP Markets
- Automated E911 provisioning
- Local Number Portability support
- CLWR CLEC in Texas
- Improved core network support processes at BCE and CLECs
- Airlink voice quality improvements
  - Synch session set up stability with Rel 4.3 software
  - Quality metrics
  - Monitoring tools

# Clearwire Mobile WiMAX Network Architecture





# Educational Deployments

- A sample of Clearwire's educational deployments include: Daytona Beach Community College, Hawaii's Public Libraries and numerous Boy's Girl's Clubs throughout the NW.
- **Clearwire Classroom on Wheels:** Service provider for Reno's virtual classroom on school bus networks.
- Students and Teachers have the ability to learn wirelessly moving from classroom and off campus locations.



# COW BUS ~Classroom on Wheels





# Wireless Integration Transport



**Anchorage bus riders utilize Clearwire network on morning commute**



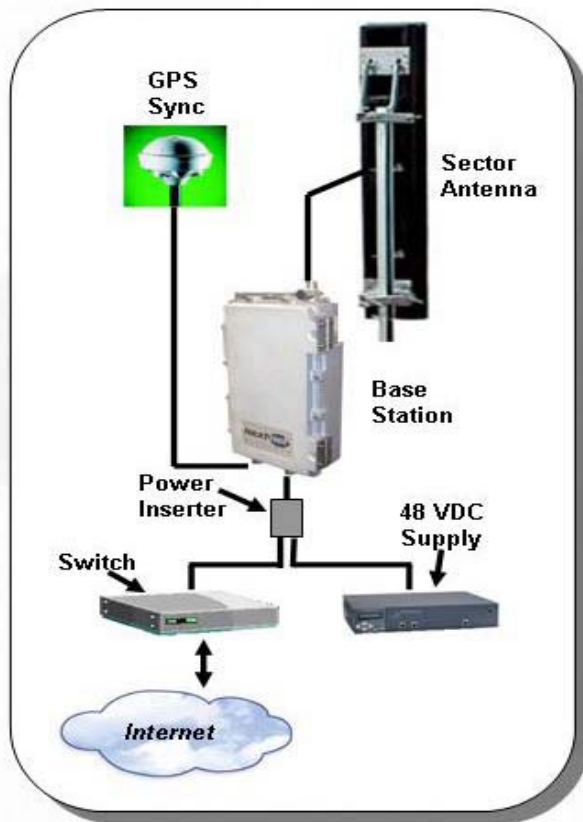
**Picture of Anchorage Mayor Mark Begich holding Bus Modem. Begich uses Clearwire throughout Anchorage**

**clearwire®**  
wireless broadband

# Mobile Broadband Unit

NextNet  
WIRELESS

## How Does it Work?



OFDM-based technology platform operates in a NLOS cellularized network



**Trunk Mounted Mobile Broadband Unit:** NLOS mobile outdoor modem mounts to trunk of emergency vehicle (police, fire, ambulance, etc.). The fully-integrated device (modem-antenna-transceiver) delivers broadband voice and data services over licensed frequencies.

COMPANY CONFIDENTIAL

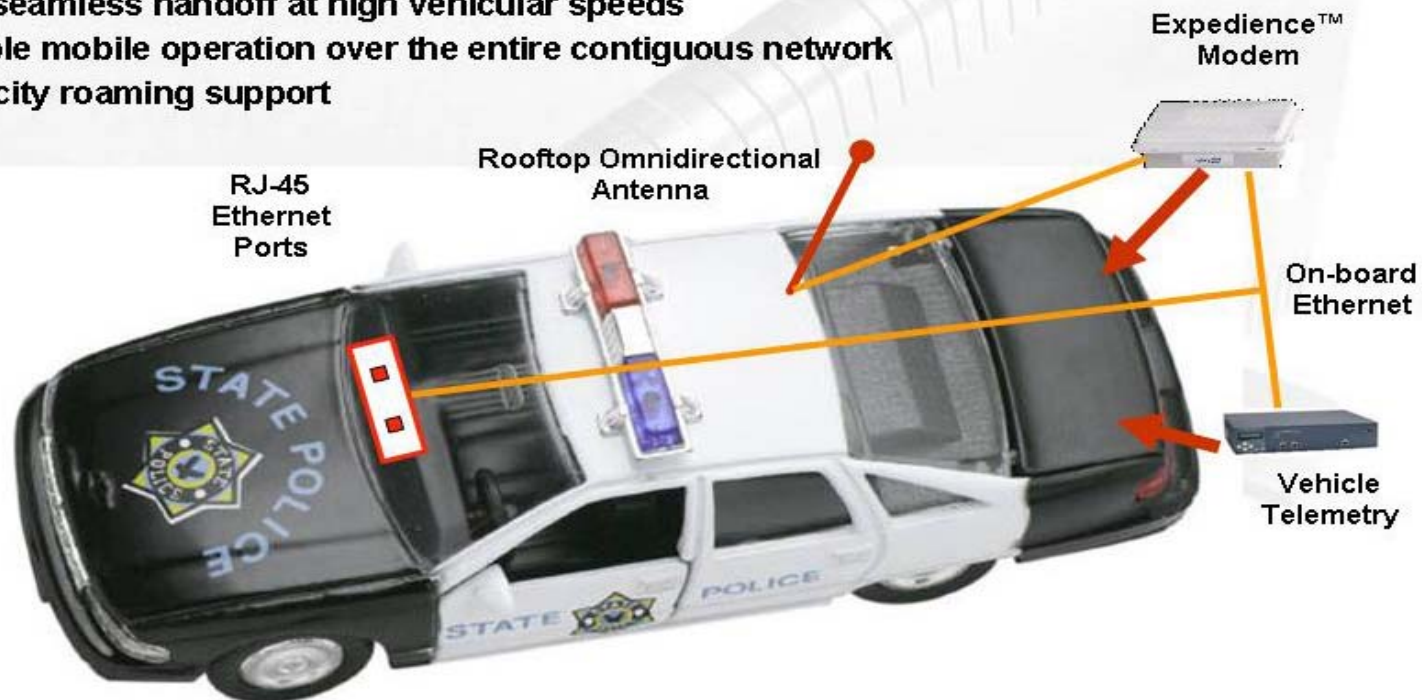


# Layout of Public Safety Unit

**NextNet**  
WIRELESS

## Public Safety Officials – Carry the Office With You!

- “Mobile Ethernet” Advanced OFDM technology delivers consistent throughput everywhere in the coverage area
- Robust construction to meet Public Safety requirements
- Fast, seamless handoff at high vehicular speeds
- Reliable mobile operation over the entire contiguous network
- Multi-city roaming support



COMPANY CONFIDENTIAL

# Clearwire and South Carolina Collaboration

- Spectrum: Full Value paid for use of the SCETV Excess Spectrum Capacity
- Educational Services: Clearwire would coordinate efforts to deliver educational services and content at public schools and universities.
- State Infrastructure: State and municipal infrastructure that could be utilized for tower sites will help offset deployment costs in both rural and urban locations.
- Service Contracts: Support in providing city and state government departments and agencies with mobile broadband services.
- Emergency Response: Coordination in integrating Emergency Response Services