



**Budget Presentation for  
House Ways & Means Committee  
Healthcare Subcommittee**

**Amber Gillum, Acting State Director**

**January 15, 2015**

## Index

Key Officials and Contact Information -----	1
Agency Organizational Chart -----	2
Summary of the FY 2013-14 Accountability Report -----	3
Major Program Areas -----	4
Key Results -----	6
Comparison of Appropriations to Expenditures FY 2010-11 through FY 2013-14 -----	7
Prioritized Summary of FY 2015-16 Budget Request -----	11
FY 2015-16 Proviso Request -----	13

## Key Officials with Contact Information

Amber Gillum, Acting State Director

(803) 898-1390

[amber.gillum@dss.sc.gov](mailto:amber.gillum@dss.sc.gov)

Holly Pisarik, Special Assistant to the State Director

(803) 898-1390

[holly.pisarik@dss.sc.gov](mailto:holly.pisarik@dss.sc.gov)

Jessica Hanak-Coulter, Deputy State Director for Human Services

(803) 898-1370

[jessica.hanak-coulter@dss.sc.gov](mailto:jessica.hanak-coulter@dss.sc.gov)

- *Child Welfare*
- *Adult Protective Services*

Amber Gillum, Deputy State Director for Economic Services

(803) 898-7305

[amber.gillum@dss.sc.gov](mailto:amber.gillum@dss.sc.gov)

- *SNAP*
- *Family Independence/Welfare to Work*
- *Child Care*

Katie Morgan, Integrated Child Support Services Director

(803) 898-1519

[Katie.morgan@dss.sc.gov](mailto:Katie.morgan@dss.sc.gov)

William Bray, Chief of Fiscal and Governmental Affairs

(803) 898-7225

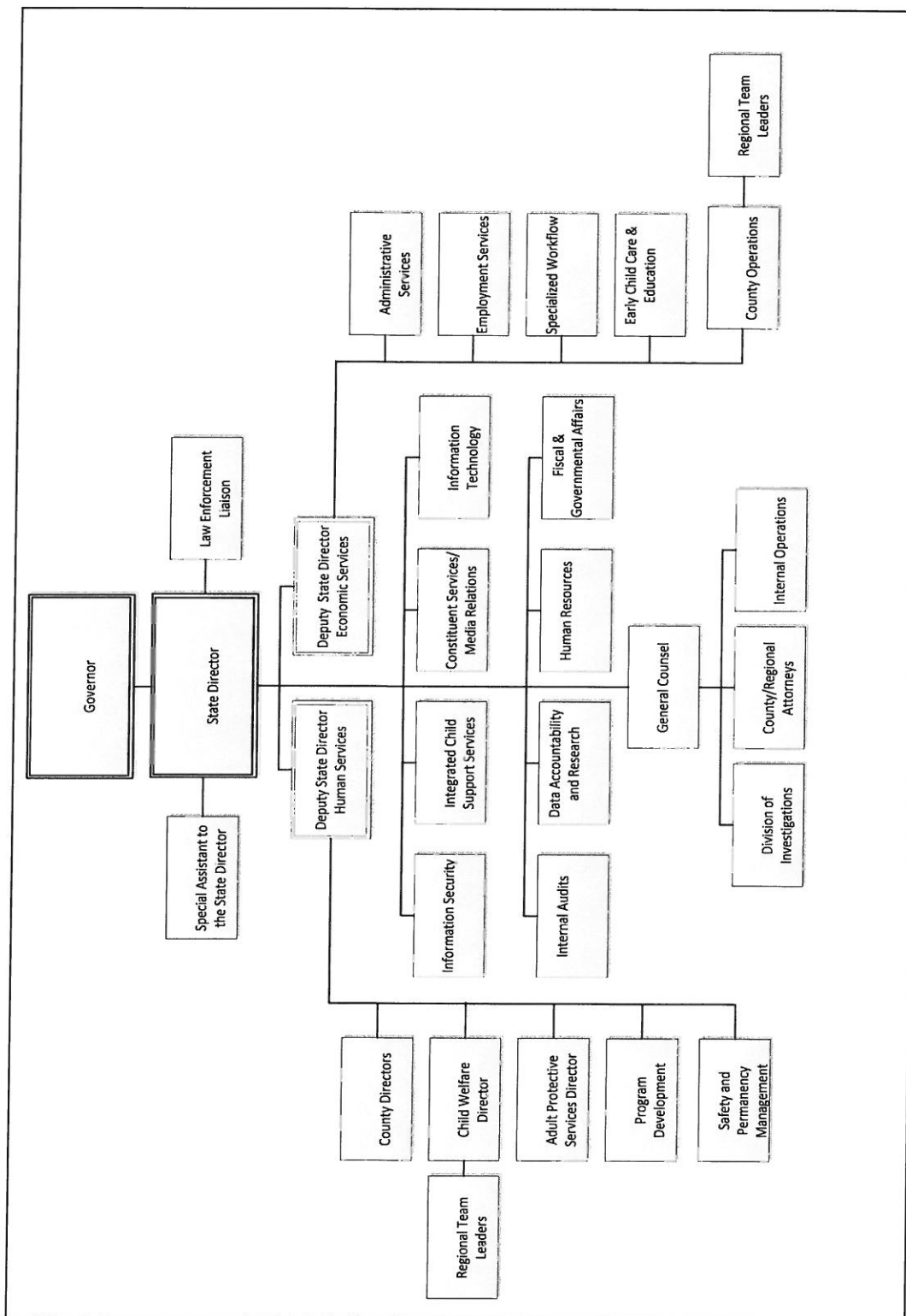
[William.brayjr@dss.sc.gov](mailto:William.brayjr@dss.sc.gov)

Marilyn Matheus, Constituent Services and Public Information Director

(803) 898-7858

[Marilyn.matheus@dss.sc.gov](mailto:Marilyn.matheus@dss.sc.gov)

## Organizational Chart of the Agency



## **Summary of the FY 2013-14 Accountability Report**

The 2013-2014 Accountability Report reflects the Department of Social Services' renewed focus on the core functions of DSS and the basic goals, strategies and objectives needed to perform those functions with excellence.

### **Child Welfare Services**

The agency has been engaged in a systemic and comprehensive review of its Child Welfare Services (CWS) programs, working diligently to identify and implement solutions designed to improve these services across the state. These solutions, along with existing processes and strategies, are designed to impact safety (such as initiating and completing CPS assessments timely), permanency (such as reducing time to TPR and adoption or behaviorally based treatment plans that support reunification) and wellbeing, which includes access to trauma assessments and evidence based services for families.

These efforts have resulted in positive changes for the agency. For the first time since a specific department was created to handle child welfare issues in 1937, DSS will now be doing the following:

- Working directly with statewide law enforcement to coordinate responses;
- Implementing a new caseload methodology to determine the number of caseworkers needed at any given time;
- Creating a regionalized intake process to ensure standards are consistent county to county;
- Proactively providing information to the public on the DSS website regarding child fatalities that occurred as a result of child abuse and neglect.

These reforms, and many others, will mean better service for the children and families under the agency's care and represent a major upgrade in performance.

### **Adult Protective Services**

In 2014, DSS continued to work with the University of South Carolina developing online training courses to increase the knowledge and skill level of APS workers. A new Personal Care Assistant initiative was launched to assist in providing care for vulnerable adults who need temporary care and supervision until long term care is available.

### **Economic Services**

During the past year, Economic Services programs took proactive approaches to improve the health and well-being of children and adults in our state. The SNAP Program has introduced new fraud detection and prevention tools to address benefit fraud, including the implementation of Benefit Integrity Conferences, the USDA/FNS Accenture fraud detection project, and a SNAP Fraud Prosecution initiative. Early Care and Education Services has continued to implement additional activities to improve their program, including increased community outreach, increased technical assistance and consultation, and the ABC Grow Healthy joint endeavor with SCDHEC.

### **Integrated Child Support Services**

In 2014, Integrated Child Support Services implemented new workflow processes to enhance the scheduling of child support conferences and service of process. Additional efforts have also been made to establish partnerships to improve training for staff and to provide additional related services to the families served by this program.

## Major Program Areas

Human Services	
Child Protective Services	These programs provide services to families which are mandated by law to protect children from abuse and neglect within their families, in foster care, or by persons responsible for the child's welfare as defined by statute. Services are provided to strengthen families; to enable children to remain safe in the home; to temporarily remove from parental custody a child who is at imminent risk of harm; or to pursue termination of parental rights and assure the child permanency in a substitute family if the custodial family cannot be preserved without serious risk to the child.
Foster Care	These programs provide within the framework of federal and state mandates, substitute care and to support out-of-home services that are child centered and family focused; to contribute to the protection of children and promote their well-being, and to effectively serve children who are in need of therapeutic placements.
Adoptions	The purpose of this program is to provide services to children, birth parents, and adoptive families, to suitably and permanently place children; and to provide post-legal services to adult adoptees, birth families, and adoptive families.
Family Preservation	This program prevents the unnecessary separation of children from their families, improve the quality of care and services to children and their families, and ensure permanency for children by reuniting them with their parents, by adoption or by another permanent living arrangement.
Adult Protective Services	The purpose of this program is to investigate reports of abuse, neglect or exploitation of vulnerable adults that are senile; mentally retarded, developmentally disabled, and/or otherwise incapacitated (age 18 and over) who are unable to provide for their own care and protection, and to provide protective services to these adults in the least restrictive environment.

## Major Program Areas

<b>Economic Services</b>	
SNAP (Food Stamps)	<p>The federal Supplemental Nutrition Assistance Program (SNAP) provides cash assistance to low-income individuals and families so they can purchase food.</p> <p>The SNAP 2 Work program provides employment-related services. The Family Nutrition Program consists of a network of food assistance programs that improve the health and well-being of children and adults who cannot provide adequate nutrition for themselves.</p>
Family Independence (TANF)	Family Independence provides assistance to welfare recipients to maximize their strengths and abilities to become fully employed; to become socially and economically independent.
Child & Adult Food Services	The Food Services Program consists of a network of food assistance programs that improve the health and well-being of children and adults who cannot provide adequate nutrition for themselves.
Early Care and Education Services	The primary focus of the Division of Early Care and Education (DECE), formerly called Child Care Services, remains to increase the availability, affordability, accessibility, quality and safety of child care throughout the State.
<b>Child Support</b>	
Integrated Child Support Services	The Integrated Child Support Services Division (ICSSD), formerly the Child Support Enforcement Division and the Child Support Enforcement Project, establishes and enforces orders for child support, establishes paternity for children when paternity is an issue, locates absent parents when whereabouts are unknown, and collects and distributes child support payments. ICSSD also provides enhanced fatherhood initiatives and new linkages to child welfare services and employment-related services to improve the capability of both custodial and non-custodial parents to provide their children with the financial, physical and emotional support they deserve and need to be safe and to thrive.

## Key Result Areas

The Department of Social Services established a series of goals, strategies, objectives, and performance measures as detailed in the Accountability Report. These key result areas were developed in line with three goals:

1. Effectively and efficiently serve the citizens of South Carolina by ensuring the safety of children and adults who cannot protect themselves.
2. Effectively and efficiently serve the citizens of South Carolina by helping families achieve stability through financial and other temporary benefits while transitioning into employment.
3. Help families achieve stability by increasing the frequency and reliability of child support payments and by providing non-custodial parents with the tools they need to be able to support and engage with their children.

Each goal is accompanied by a series of strategies for achieving the goal. One of the strategies for goal #1, for instance, is that children will be safe and thriving in foster care. Specific, measurable objectives were developed for each strategy. In this example, the objectives tied to this strategy include:

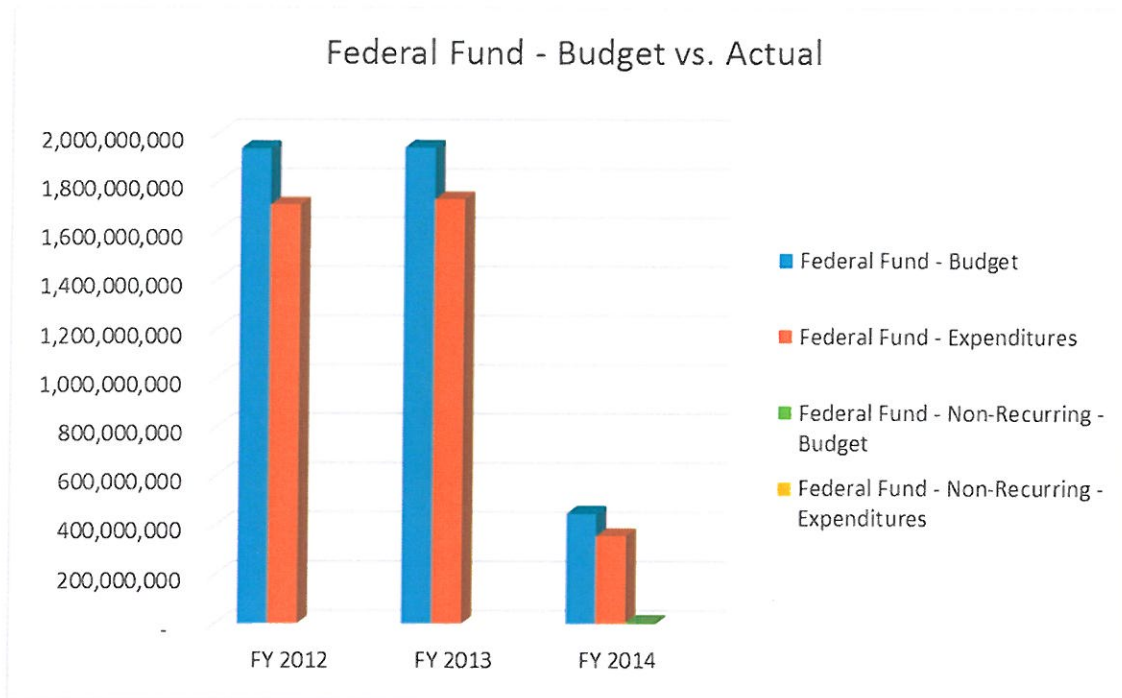
- Monthly visits with children in foster care
- Increased stability of foster care placements
- Established permanency goals for all children in foster care
- Recruitment of quality foster homes

Other strategies and objectives in the Accountability Report focus on:

- Initiating and completing CPS investigations timely
- Improving the quality of the Adult Protective Services program
- Issuing means-tested benefits such as SNAP and FI with timeliness and accuracy
- Inspecting child care centers and registered family child care homes
- Increasing the number of child support orders established and enforced
- Improving services to citizens by increasing partnerships with other state agencies and organizations

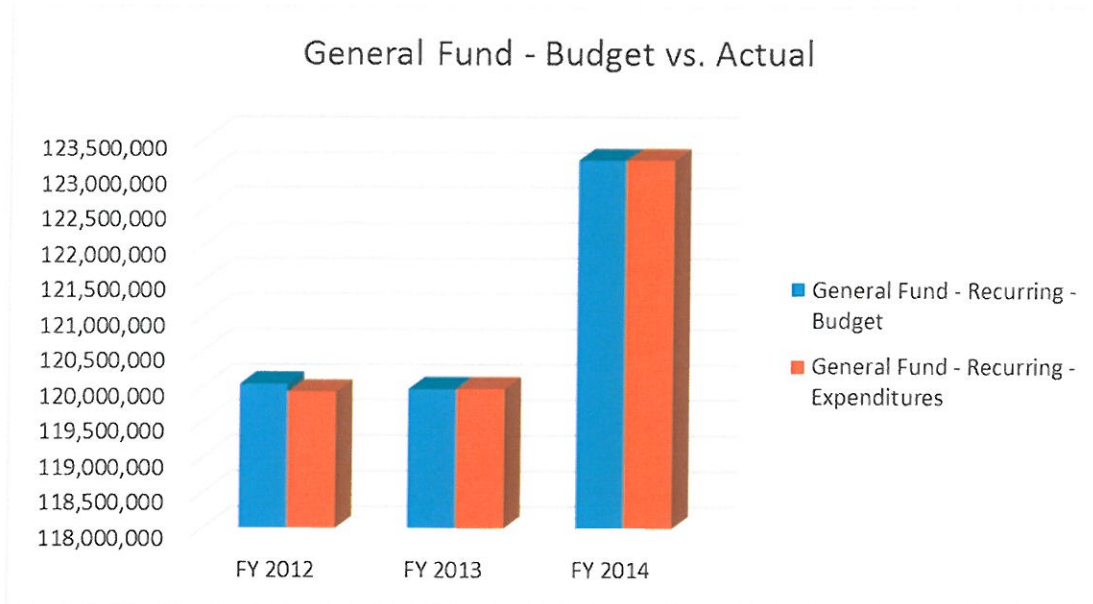


## Comparison of Appropriations to Expenditures FY 2010-11 through FY 2013-14



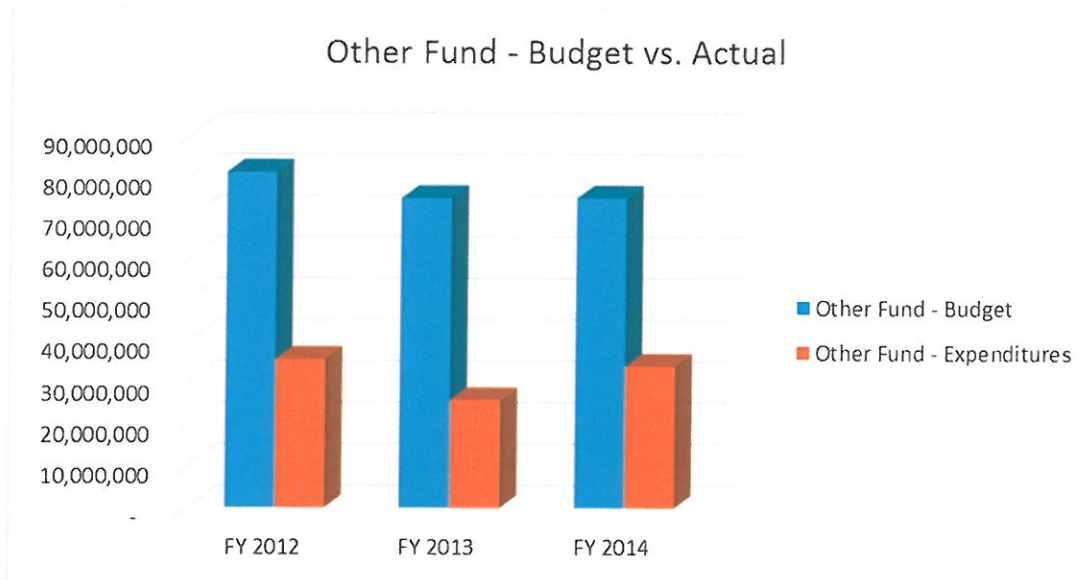
Year	Federal Fund Budget	Federal Fund Expenditures	Federal Fund - Non-Recurring Budget	Federal Fund - Non-Recurring Budget Expenditures
FY 2012	1,936,139,895	1,706,137,189	-	-
FY 2013	1,940,691,746	1,729,300,685	-	-
FY 2014	447,865,259	358,205,869	6,234,733	-
<b>Grand Total</b>	<b>\$ 4,324,696,900</b>	<b>\$ 3,793,643,744</b>	<b>\$ 6,234,733</b>	<b>\$ -</b>

## Comparison of Appropriations to Expenditures FY 2010-11 through FY 2013-14



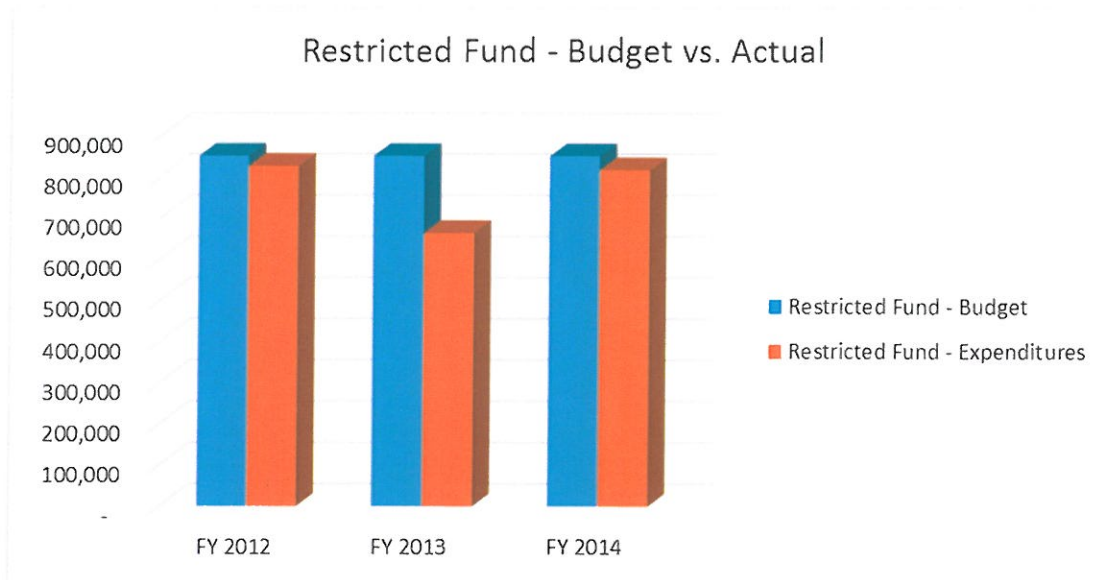
Year	General Fund Budget	General Fund Expenditures
FY 2012	120,029,180	119,917,355
FY 2013	119,962,124	119,962,124
FY 2014	123,190,625	123,190,625
<b>Grand Total</b>	<b>\$ 363,181,929</b>	<b>\$ 363,070,104</b>

## Comparison of Appropriations to Expenditures FY 2010-11 through FY 2013-14



Year	Other Fund Budget	Other Fund Expenditures
FY 2012	81,093,356	35,812,926
FY 2013	74,835,191	25,999,997
FY 2014	74,831,651	34,192,185
<b>Grand Total</b>	<b>\$ 230,760,198</b>	<b>\$ 96,005,108</b>

## Comparison of Appropriations to Expenditures FY 2010-11 through FY 2013-14



Year	Restricted Fund Budget	Restricted Fund Expenditures
FY 2012	849,986	824,852
FY 2013	849,986	662,630
FY 2014	849,986	815,834
<b>Grand Total</b>	<b>\$ 2,549,958</b>	<b>\$ 2,303,316</b>

## Prioritized Summary of FY 15-16 Budget Request

Priority	Item	Summary
1	<p>Child Welfare Retention and Recruitment (B-5054)</p> <p>State: \$3,967,161 Total Funds: \$13,517,372 FTEs: 210</p>	<p>The Department is requesting funding to improve statewide retention and recruitment of Child Welfare workers.</p> <p>To reduce caseloads and distribute the workload in county offices more evenly, DSS is requesting a total of 202 additional child welfare caseworker and supervisor positions. DSS is requesting 4 FTE's to provide legal support to the county attorneys, and 4 FTE's to provide human resource support to the Child Welfare Division.</p>
2	<p>Child Support Enforcement System (B-4424)</p> <p>State: \$7,200,000 Total Funds: 21,200,000</p>	<p>DSS is requesting a recurring Total Fund increase of \$21,200,000, consisting of \$7,200,000 in General Funds and \$14,000,000 in Federal Fund authorization, for FY 2015-16 to develop and maintain the federally mandated Child Support Enforcement System (CSES) and the Family Court Case Management System (FCCMS) and to pay ongoing costs for the federally mandated State Disbursement Unit (SDU).</p>
3	<p>Improving Employee Retention (B-5057)</p> <p>State: \$1,839,472 Total Funds: \$6,313,385</p>	<p>DSS is requesting funding to improve for employee retention by providing a 10% increase for Child Welfare caseworkers and supervisors, and a 5% increase for caseworkers and supervisors in Adult Protective Services, Adoptions, Intensive Foster Care and Clinical Services, Child Support, Economic Services, Child Care, and Clerical staff to include the Economic Services Call Center and Scan Center.</p>
4	<p>Child Welfare Caseworker Assistants (B-5217)</p> <p>State: \$1,399,371 Total Funds: \$2,432,279 FTEs: 67</p>	<p>To reduce caseloads and distribute the workload in county offices more evenly, DSS is requesting a total of 67 additional child welfare caseworker assistant positions. These positions will be held by staff who need additional experience to qualify for practitioner positions thereby creating resources readily available to advance into these positions as the need arises.</p>
5	<p>Adult Protective Services Recruitment (B-5153)</p> <p>State: \$405,105 Total Funds: \$1,777,556 FTEs: 35</p>	<p>The Adult Protective Services (APS) program protects the health and welfare of elderly and disabled adults. DSS is requesting funding for 35 additional Adult Protective Services caseworkers and supervisors.</p>

Priority	Item	Summary
6	<p>Improve Services and Accountability in Child Welfare (B-5069)</p> <p>State: \$150,885 Total Funds: \$546,879 FTEs: 4</p>	DSS is requesting funding to implement a standardized local child death review (CDR) process as recommended by the State Child Fatality Advisory Committee (SCFAC) in 2003. In addition, DSS is requesting four additional staff for our Constituent Services and Public Information Office and Disaster Response.
7	<p>Child Endangerment and Assessment Database (C-5191)</p> <p>State: \$290,875 (Capital Reserve)</p>	DSS in collaboration with other agencies, including: the Department of Mental Health, Department of Alcohol and Other Drug Abuse Services (DAODAS), State Law Enforcement Division (SLED), Department of Juvenile Justice (DJJ), Department of Education, and Department of Health and Environmental Control (DHEC), plan to invest in technologies for improving the state's ability to use data from various agencies and entities to better inform child protection staff when alleged child abuse or neglect is reported.
8	<p>Registered Family Child Care Home Inspections (B-5060)</p> <p>Total Funds: \$1,201,444 (F) FTEs: 22</p>	DSS is requesting funding for implementing Act 295 of 2014. Act 295 of 2014 was passed to improve the safety of child in child care settings by adding inspections of 1,300 Registered Family Child Care Homes to the workload of Child Care Licensing.
9	<p>Information and Data Security (B-5063, C-5194)</p> <p>State: \$1,064,975 Total Funds: \$2,979,808 FTEs: 27 Capital Reserve: \$972,029</p>	The Department is requesting funding to deploy and maintain essential software for the security of agency Federal Tax Information (FTI) and Personally Identifiable Information (PII).
10	<p>Health and Dental Insurance for Hourly Temporary (B-4427)</p> <p>State: \$264,954 Total Funds: \$817,311</p>	The Affordable Care Act requires that beginning January 2015, employers must provide health and dental coverage for any employee working in excess of 30 hours per week. As of September 16, 2014, DSS had 136 hourly temporary employees working in excess of 30 hours per week.
11	<p>Transfer of State Agency Match to SCDHHS Base Budget (B-3706)</p> <p>State: \$(6,644,907)</p>	This request would transfer State match funds for emotionally disturbed children Medicaid expenses to SCDHHS. Once these funds are transferred to SCDHHS, SCDHHS will be responsible for providing the federal and matching funds for these services to DSS clients.

## FY 2015-16 Proviso Requests

38.5                      DSS: Court Examiner Services Exemption                      Codify

*This proviso prohibits DSS employees fully or partially paid with federal funds from serving as court examiners, which could potentially jeopardize the state's ability to draw federal dollars for their efforts. Federal policies in this arena are unlikely to change for the foreseeable future; therefore, the proviso should be codified.*

38.6                      DSS: TANF Advance Funds                      Codify

*This proviso authorizes the Department to use General Funds to advance payments to TANF recipients so that benefits are not interrupted while waiting for Federal Funds to materialize. This permits the Department to manage its cash flow in a manner that protects the beneficiaries of this program, and should be codified.*

38.9                      DSS: TANF Immunizations Certificates                      Codify

*This proviso directs DSS to obtain proof that the children of TANF applicants and recipients have received age-appropriate immunizations. This language is important to promoting child welfare and should be incorporated into permanent law.*

38.18                     DSS: Child Care Voucher                      Amend

*This proviso states that funds provided to the Department for child care vouchers must be used to enroll eligible children in facilities that meet the state's minimum licensing standards, but includes a passage allowing the Department to waive those quality standards on a case-by-case basis. The Department requests that this waiver be eliminated, so that State funds are not be used to place children in centers that fail to meet basic quality standards.*

38.19                     DSS: Meals in Emergency Operations                      Codify

*This proviso is necessary in order to provide meals for employees who are required to work at emergency shelters and other locations and are unable to leave their station and are not in a travel status. The department is the Primary State Agency designated for coordinating Mass Care operations (ESF-6), and coordinating Food Services (ESF-11).*

38.23                     DSS: SNAP Coupons                      Delete

*This proviso directed the Department to establish a program that it is now implementing in association with the Department of Health and Environmental Control.*

38.24                     DSS: Federally Certified Child Support Enforcement System Project                      Delete

*This proviso abolished an ad-hoc committee originally charged with steering and oversight of the implementation of the Child Support Enforcement System (CSES). This Committee has been abolished and the Department has taken sole responsibility for implementation of CSES.*



## FY 2015-16 Proviso Requests

38.25            DSS: New SNAP Debit Card Accountability Features            Delete

*This proviso required the Department to produce a report on enhancing fraud prevention features of certain electronic benefit cards by December 1, 2014. The report is completed, rendering this proviso unnecessary.*

38.26            DSS: Contracting Best Practices            Delete

*This proviso directed the Department to submit a written report by December 1, 2014, describing actions taken to improve certain procurement processes. The report is complete and this proviso is no longer necessary.*

### **Request the following Provisos to be continued unchanged**

38.1            DSS: Fee Retention  
38.2            DSS: Recovered State Funds  
38.3            DSS: Foster Children Burial  
38.4            DSS: Battered Spouse Funds  
38.5            DSS: Court Examiner Services Exemption  
38.6            DSS: TANF Advance Funds  
38.7            DSS: Fee Schedule  
38.8            DSS: Food Stamp Fraud  
38.9            DSS: TANF Immunizations Certificates  
38.10           DSS: County Director's Pay  
38.11           DSS: Use of Funds Authorization  
38.12           DSS: Use of Funds Authorization  
38.13           DSS: Grant Authority  
38.14           DSS: Family Foster Care Payments  
38.15           DSS: Penalty Assessment  
38.16           DSS: Child Support Enforcement Automated System Carry Forward  
38.17           DSS: Child Support Enforcement System  
38.19           DSS: Meals in Emergency Operations  
38.20           DSS: Day Care Facilities Supervision Ratios  
38.21           DSS: Foster Care Goals  
38.22           DSS: Comprehensive Teen Pregnancy Prevention Funding