

Charts Accompanying the
Remarks of Rick Harmon
Office of State Treasurer Curtis M. Loftis, Jr.
On the Topic of Debt and K-16 Funding
Ways & Means K-16 Building Need and Utilization Study Committee
August 28, 2013

The Honorable Brian White, Chairman
The Honorable Roland Smith
The Honorable Gilda Cobb-Hunter
The Honorable Harry B. "Chip" Limehouse

The Honorable Kenny Bingham
The Honorable James H. "Jimmy" Merrill
The Honorable Jackie Hayes
Ms. Blythe Bunderick, Budget Analyst

Chart 1 General Obligation Debt Service Paid from General Fund: Fiscal Years 2005 - 2031

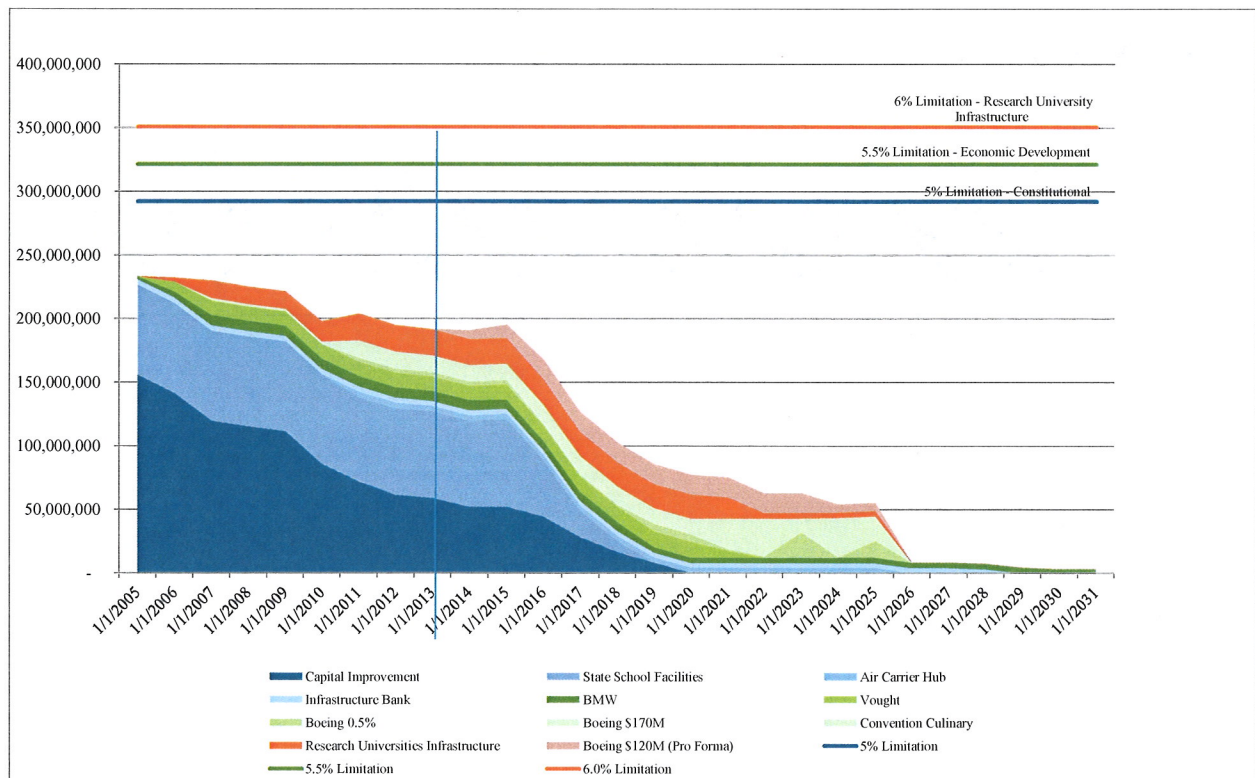


Chart 2 General Fund Revenue Collections: Fiscal Years 2000 - 2012

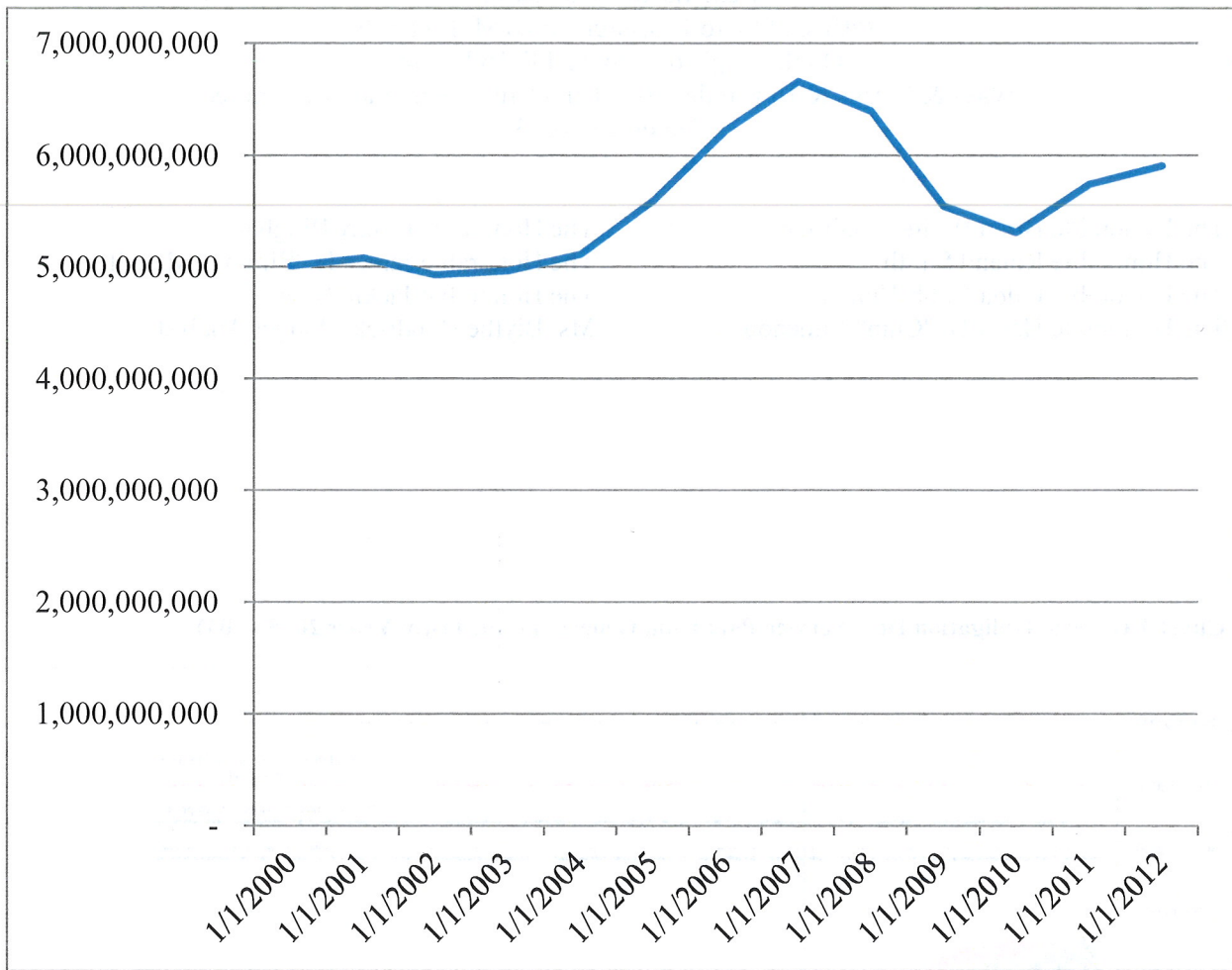


Chart 3 Selected State Debt Medians for Aaa Rated States: Moody's Debt Medians Report 2013

State	Net Tax-Supported Debt							
	Per Capita		as a Percentage of Personal Income		as a Percentage of State GDP		Total Tax Supported Debt	
	\$	National Rank	%	National Rank	%	National Rank	\$ Billions	National Rank
Alaska	1,251	21	2.8	25	2.1	31	0.9	42
Delaware	2,536	8	6.2	7	3.9	14	2.3	33
Georgia	1,061	26	3.0	20	2.7	22	10.5	15
Indiana	424	42	1.2	42	1.0	41	2.8	30
Iowa	287	48	0.7	47	0.7	47	0.9	43
Maryland	1,799	14	3.6	18	3.4	16	10.6	14
Missouri	699	37	1.8	37	1.8	35	4.2	25
New Mexico	1,316	17	3.8	16	3.7	15	2.7	31
North Carolina	853	31	2.4	30	1.9	34	8.3	17
South Carolina	780	35	2.3	31	2.4	26	3.7	27
Tennessee	343	45	0.9	44	0.9	45	2.2	35
Texas	580	39	1.5	40	1.2	40	15.1	10
Utah	1,275	20	3.8	15	3.4	17	3.6	28
Vermont	811	33	1.9	35	1.9	33	0.5	45
Virginia	1,315	19	2.9	22	2.2	29	10.8	12
Mean	1,416	Aa1	3.4		3.0		10.3	
Median	1,074	Aa2	2.8		2.4		4.2	

Chart 4 General Obligation Debt Commitments: Fiscal Years 2000 - 2013

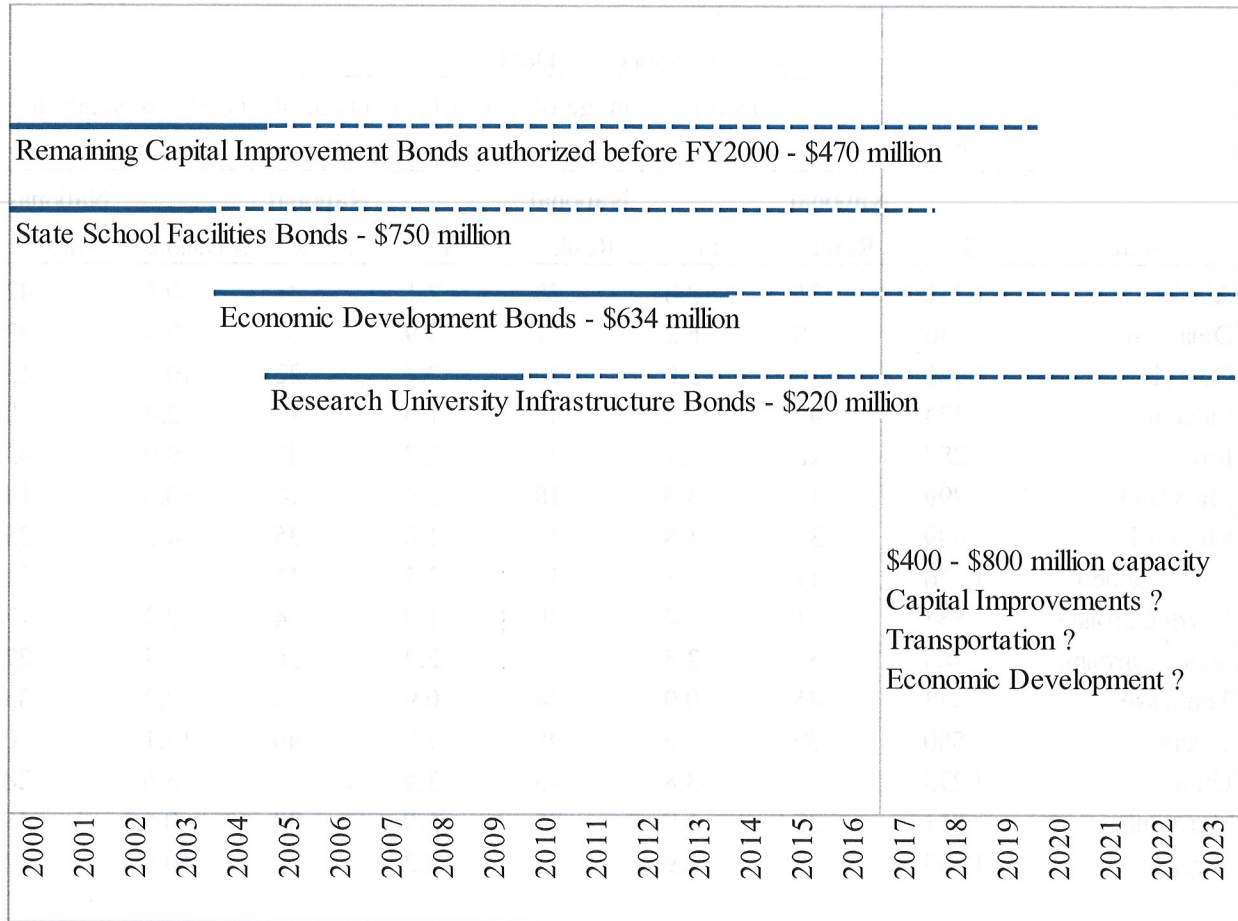


Chart 5 Growth in School District Debt: Fiscal Years 2002 - 2012

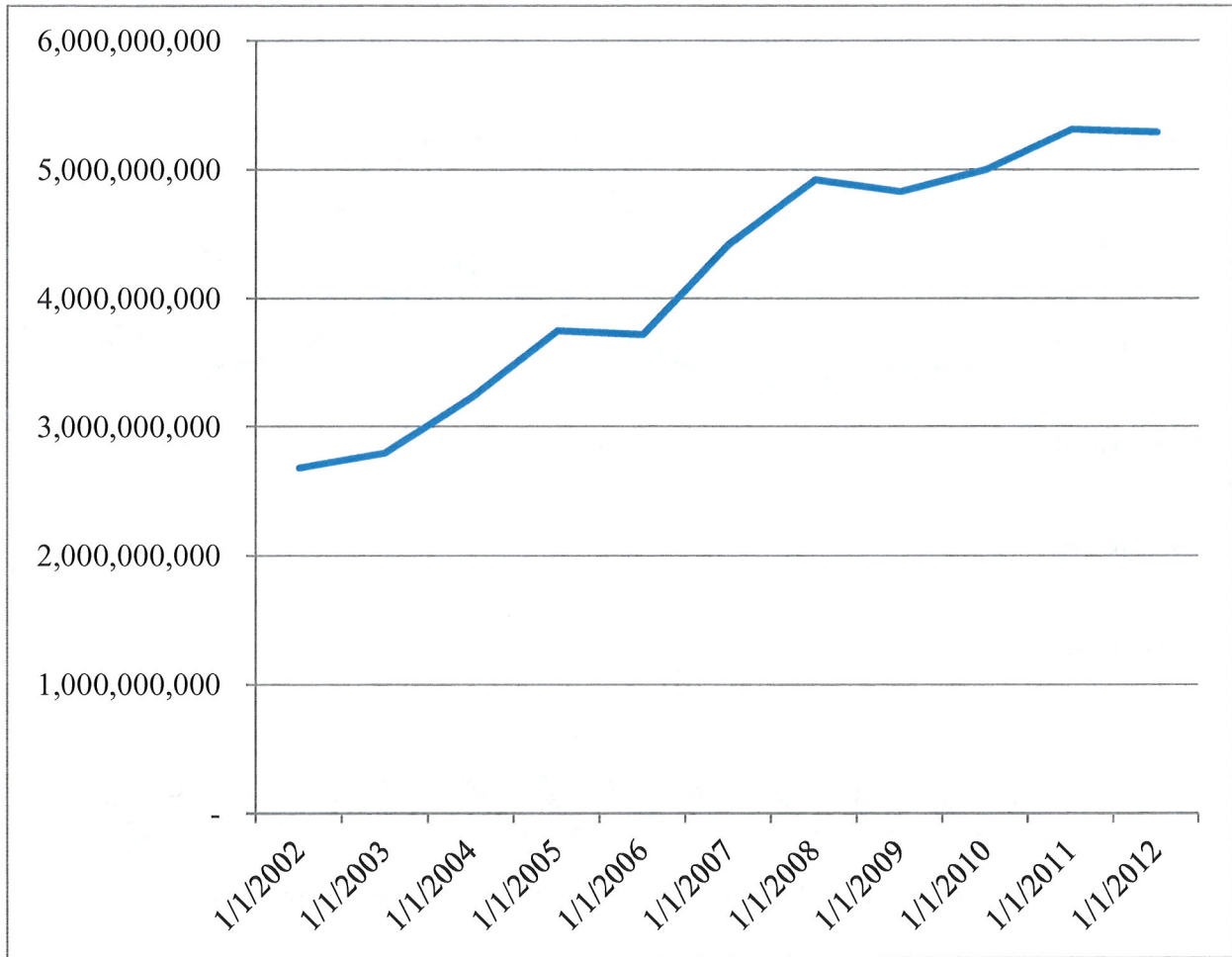


Chart 6 General Fund, EIA and Non-recurring Appropriations to K-12 Education: Fiscal Years 2001 - 2013

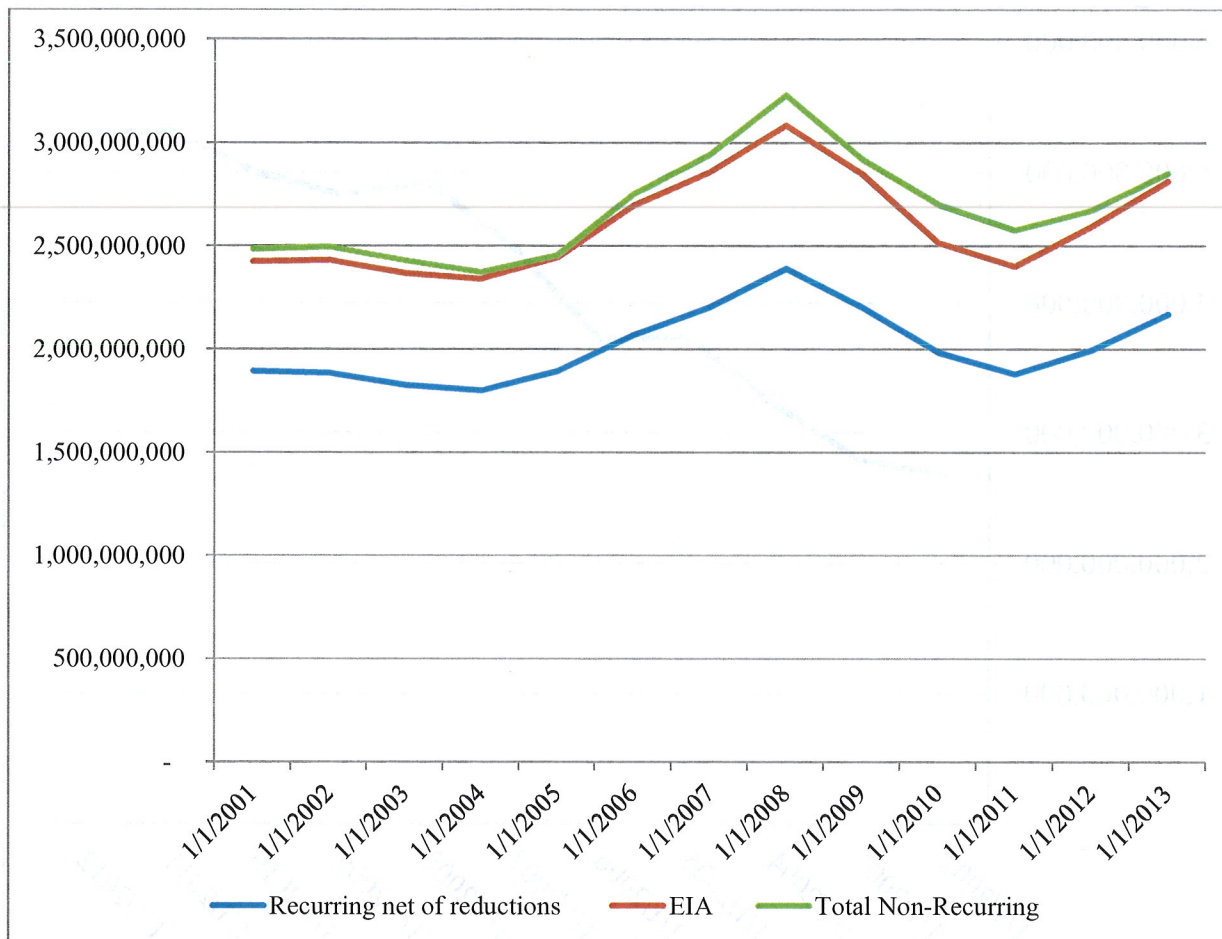


Chart 7 Growth in Higher Education Debt: Fiscal Years 2003-2012

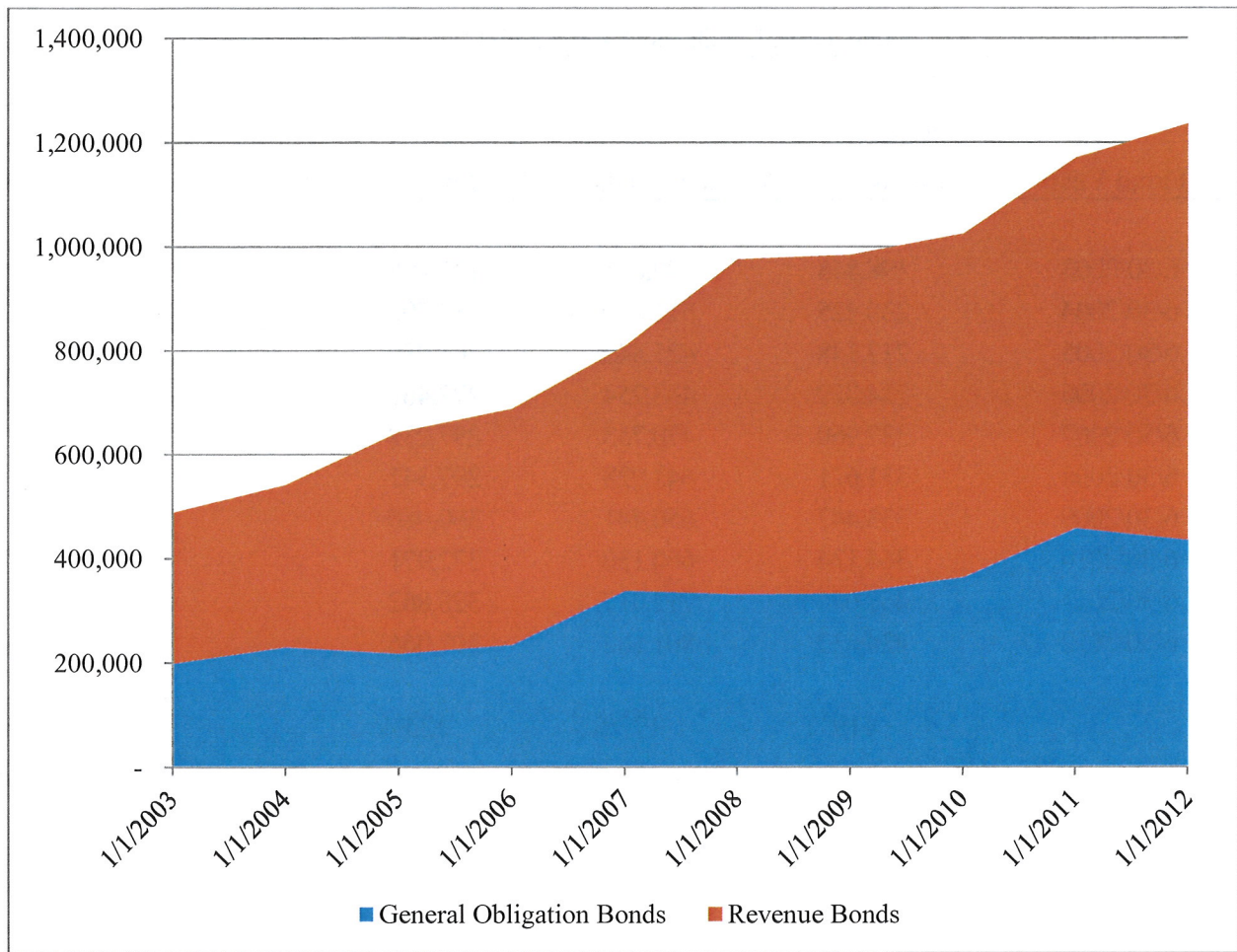


Chart 8 Long Term Liabilities in the Higher Education Fund

Long Term Liabilities (\$ thousands)			
General Obligation			
Fiscal Year	Bonds	Revenue Bonds	All Other
6/30/2003	198,848	289,071	137,405
6/30/2004	230,425	311,050	183,702
6/30/2005	217,348	425,845	261,980
6/30/2006	234,729	453,254	272,461
6/30/2007	337,960	470,733	297,232
6/30/2008	331,621	643,928	297,347
6/30/2009	333,447	650,441	360,080
6/30/2010	364,134	660,130	372,971
6/30/2011	458,050	712,017	328,862
6/30/2012	434,632	801,182	307,066
	119%	177%	123%

Chart 9 General Fund and Non-recurring Appropriations to Higher Education: Fiscal Years 2001 - 2013

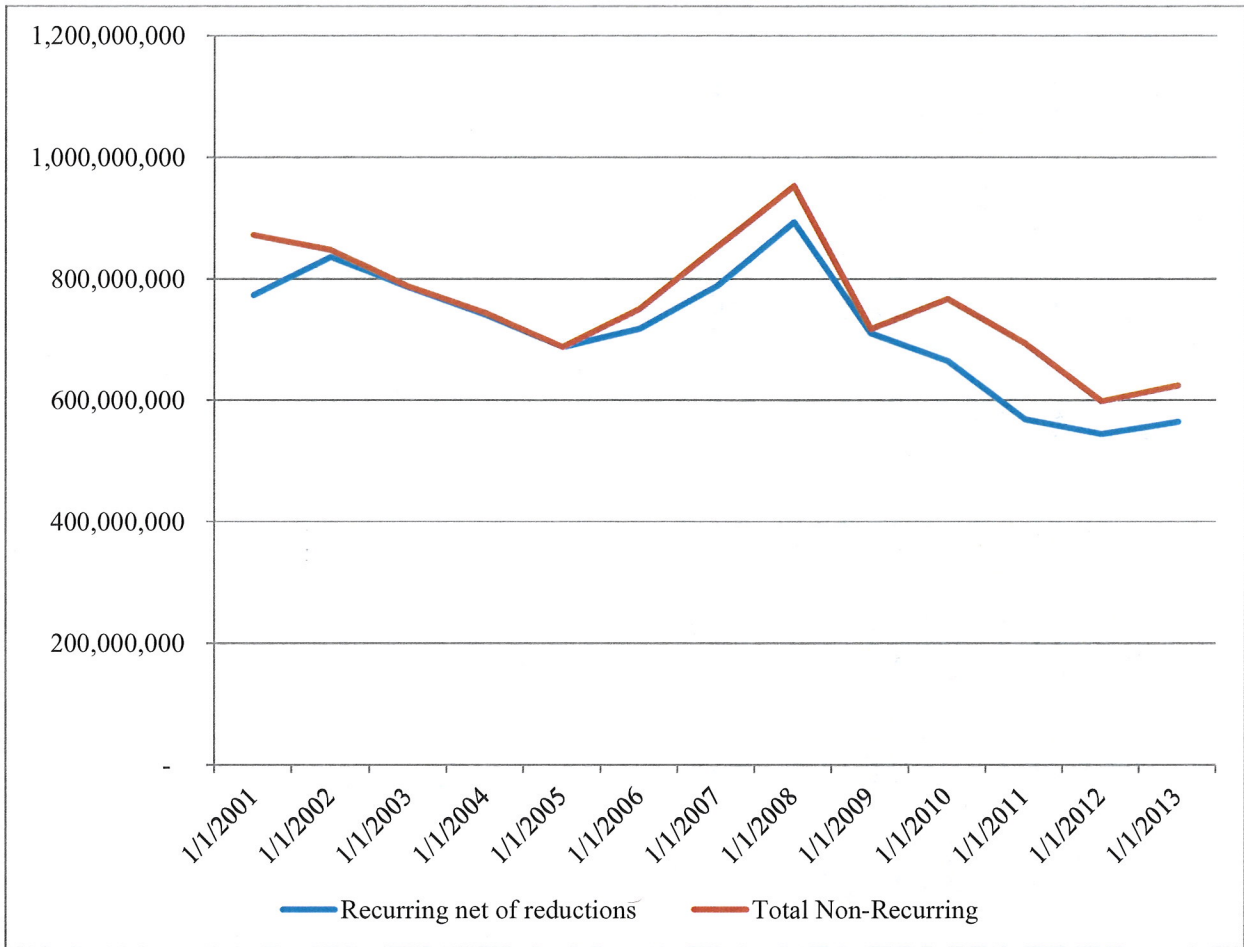


Chart 10: FTE Enrollment

	<u>2000</u>	<u>2001</u>	<u>2002</u>	<u>2003</u>	<u>2004</u>	<u>2005</u>	<u>2006</u>	<u>2007</u>	<u>2008</u>	<u>2009</u>	<u>2010</u>	<u>2011</u>	<u>2012</u>	<u>% Change</u> <u>2000-2012</u>
Alabama	166,806	165,833	173,687	180,654	183,167	180,517	180,985	182,504	187,086	199,153	210,067	212,758	205,317	23.09%
Arkansas	86,263	87,337	92,722	92,508	96,292	99,231	101,344	103,369	107,428	108,474	121,359	124,204	125,981	46.04%
Florida	404,417	420,957	442,010	476,654	499,972	504,657	507,927	518,086	540,823	564,963	607,246	636,320	638,018	57.76%
Georgia	172,909	234,998	259,566	283,391	289,382	295,356	292,655	297,755	310,759	330,866	370,732	385,615	379,004	119.19%
Kentucky	113,568	119,500	131,313	141,005	140,056	140,579	140,769	140,621	142,382	144,641	154,247	159,805	159,305	40.27%
Louisiana	170,175	168,121	172,092	177,275	183,276	183,409	166,536	166,671	165,781	169,602	178,931	183,633	181,589	6.71%
Mississippi	100,634	102,490	107,110	111,650	115,613	118,060	117,731	115,739	117,556	120,251	123,092	136,487	142,031	41.14%
North Carolina	259,308	268,589	288,997	302,159	315,159	339,034	338,644	344,056	357,601	385,792	420,956	425,779	412,349	59.02%
South Carolina	128,067	133,120	137,007	137,983	143,800	143,273	145,141	146,624	150,333	158,252	172,579	176,158	176,416	37.75%
Tennessee	160,751	159,838	160,822	167,634	169,613	170,084	169,042	171,845	173,706	178,100	190,286	201,378	203,596	26.65%
US	8,604,542	8,667,368	9,034,365	9,519,853	9,731,858	9,895,287	9,866,250	9,991,723	10,271,685	10,731,654	11,346,841	11,626,983	11,548,974	34.22%
Virginia	233,263	236,014	246,637	254,694	257,534	260,813	265,615	273,039	281,940	294,436	312,598	321,965	325,517	39.55%
West Virginia	62,959	62,902	64,799	67,374	69,466	70,786	71,717	72,679	73,525	74,864	78,798	81,116	80,193	27.37%
US Median	119,115	121,111	131,313	137,983	140,056	140,579	140,769	143,565	148,288	155,387	165,244	168,927	170,351	43.01%
US Mean	337,433	339,897	354,289	373,328	381,641	388,050	386,912	391,832	402,811	420,849	444,974	455,960	452,901	34.22%
SC Rank - H-L	25	25	25	26	25	25	25	25	25	25	25	25	25	24

Chart 11: Total Educational Revenue per FTE

	2000	2001	2002	2003	2004	2005	2006	2007	2008	2009	2010	2011	2012	% Change 2000-2012
Alabama	11,208	11,197	10,613	10,671	10,989	11,480	12,178	13,060	13,642	11,815	12,462	12,765	12,784	14.06%
Arkansas	9,815	9,443	9,551	9,560	9,626	9,261	10,110	10,257	10,509	10,811	9,914	10,068	8,583	-12.55%
Florida	10,416	11,808	11,138	10,695	9,550	9,679	9,895	10,451	9,921	9,036	8,495	8,438	7,739	-25.70%
Georgia	15,665	13,371	11,691	10,325	9,994	9,938	10,860	10,983	11,005	9,951	9,217	9,748	9,935	-36.58%
Kentucky	13,483	13,407	12,837	11,630	11,021	10,901	11,703	12,158	12,778	12,483	12,000	11,774	11,608	-13.91%
Louisiana	8,611	8,568	8,964	8,937	8,554	8,495	9,702	10,246	10,969	10,520	9,413	9,608	8,632	0.25%
Mississippi	11,585	10,561	10,092	9,892	9,476	9,420	9,309	9,939	10,828	9,803	11,038	9,673	9,286	-19.84%
North Carolina	12,387	12,194	11,606	11,151	10,885	10,617	11,594	12,248	12,477	11,325	10,623	10,941	11,418	-7.83%
South Carolina	10,103	10,538	9,984	11,933	11,228	11,961	12,497	12,550	12,557	10,671	10,971	10,198	11,032	9.19%
Tennessee	10,605	10,409	10,760	10,491	10,452	11,522	11,479	11,475	11,856	11,691	11,166	10,705	9,820	-7.40%
US	11,913	12,267	11,960	11,395	11,067	11,183	11,778	12,026	12,067	11,637	11,298	11,276	11,095	-6.86%
Virginia	11,564	11,859	11,425	10,651	10,339	11,139	11,391	11,924	11,883	11,926	11,347	11,865	12,034	4.06%
West Virginia	9,545	9,535	9,965	9,532	8,848	9,414	9,263	9,583	10,893	10,273	9,954	9,990	10,221	7.09%
US Median	12,192	12,194	11,666	11,151	10,989	11,288	11,705	11,924	12,041	11,788	11,347	11,276	11,418	-6.35%
US Mean	12,636	12,614	12,272	11,867	11,696	11,895	12,371	12,684	12,928	12,677	12,244	12,153	12,029	-4.80%
SC Rank - H-L	42	39	43	17	21	18	17	19	22	40	32	38	28	7

Chart 12: Educational Appropriations per FTE

	<u>2000</u>	<u>2001</u>	<u>2002</u>	<u>2003</u>	<u>2004</u>	<u>2005</u>	<u>2006</u>	<u>2007</u>	<u>2008</u>	<u>2009</u>	<u>2010</u>	<u>2011</u>	<u>2012</u>	<u>% Change</u> <u>2000-2012</u>
Alabama	6,808	6,514	6,135	5,972	5,731	5,777	6,436	7,335	8,119	6,026	5,627	5,438	5,195	-23.70%
Arkansas	7,567	6,950	6,606	6,387	6,473	5,957	6,670	6,720	6,951	6,834	6,045	5,914	5,635	-25.53%
Florida	7,853	8,566	7,785	7,412	6,797	7,412	7,528	8,150	7,705	6,640	5,852	5,683	4,834	-38.45%
Georgia	13,213	11,055	9,818	8,835	8,511	8,506	8,957	8,923	8,815	7,887	7,247	6,869	6,277	-52.49%
Kentucky	9,423	9,413	9,090	7,984	7,848	7,066	7,733	7,754	8,071	7,530	7,025	6,647	6,269	-33.47%
Louisiana	6,453	6,313	6,765	6,670	6,171	6,147	6,555	7,336	8,311	8,019	6,827	7,028	5,243	-18.75%
Mississippi	8,716	7,647	6,743	6,351	6,083	5,796	5,786	6,278	7,008	6,295	6,730	5,624	4,887	-43.93%
North Carolina	10,063	9,884	9,117	8,711	8,187	7,979	8,613	9,328	9,600	8,655	8,185	8,309	8,163	-18.88%
South Carolina	6,513	6,635	5,721	7,399	6,102	6,269	6,513	6,656	6,750	5,357	5,031	4,431	4,095	-37.14%
Tennessee	6,758	6,915	6,905	6,537	6,176	7,564	7,405	7,653	7,986	7,849	7,199	6,532	5,245	-22.38%
US	8,427	8,670	8,352	7,713	7,195	7,152	7,486	7,667	7,781	7,273	6,729	6,483	5,906	-29.92%
Virginia	7,652	8,033	7,711	6,110	5,541	5,833	5,981	6,500	6,227	5,982	5,266	5,319	4,269	-44.20%
West Virginia	5,899	6,061	6,207	5,785	4,946	5,152	4,807	5,080	6,238	5,281	4,993	4,920	4,902	-16.90%
US Median	8,312	8,566	7,929	7,226	6,800	6,956	7,100	7,335	7,685	7,095	6,729	6,010	5,434	-34.62%
US Mean	8,477	8,381	8,050	7,552	7,139	7,125	7,381	7,595	7,791	7,382	6,811	6,466	5,958	-29.71%
SC Rank - H-L	44	42	47	23	38	34	36	34	36	47	45	48	46	33

Chart 13: Net Tuition per FTE

	2000	2001	2002	2003	2004	2005	2006	2007	2008	2009	2010	2011	2012	% Change 2000-2012
Alabama	4,400	4,683	4,478	4,699	5,258	5,703	5,742	5,725	5,523	5,788	6,835	7,327	7,589	72.47%
Arkansas	2,248	2,493	2,926	2,972	3,153	3,304	3,440	3,537	3,558	3,977	3,869	4,154	2,948	31.13%
Florida	2,563	3,241	3,352	3,283	2,754	2,267	2,367	2,302	2,216	2,396	2,644	2,754	2,906	13.37%
Georgia	2,452	2,317	1,873	1,491	1,483	1,432	1,903	2,060	2,190	2,064	1,970	2,880	3,658	49.18%
Kentucky	4,061	3,995	3,747	3,646	3,173	3,834	3,970	4,404	4,707	4,953	4,975	5,126	5,339	31.48%
Louisiana	2,157	2,255	2,199	2,267	2,383	2,348	3,147	2,910	2,658	2,501	2,585	2,580	3,389	57.08%
Mississippi	2,870	2,914	3,349	3,541	3,392	3,623	3,523	3,661	3,820	3,508	4,308	4,049	4,399	53.29%
North Carolina	2,324	2,310	2,490	2,440	2,698	2,638	2,981	2,920	2,877	2,670	2,438	2,632	3,254	40.01%
South Carolina	3,589	3,903	4,263	4,534	5,126	5,692	5,985	5,894	5,807	5,314	5,940	5,767	6,937	93.27%
Tennessee	3,847	3,494	3,855	3,955	4,275	3,958	4,074	3,821	3,870	3,842	3,967	4,173	4,576	18.93%
US	3,486	3,597	3,609	3,681	3,871	4,031	4,292	4,359	4,286	4,364	4,568	4,793	5,189	48.88%
Virginia	3,913	3,825	3,714	4,541	4,798	5,306	5,410	5,423	5,657	5,944	6,082	6,545	7,765	98.46%
West Virginia	3,646	3,474	3,758	3,747	3,902	4,262	4,456	4,502	4,655	4,992	4,960	5,070	5,320	45.90%
Median	3,707	3,780	3,714	3,830	4,175	4,388	4,456	4,503	4,738	4,913	4,911	5,070	5,339	44.04%
Mean	4,159	4,233	4,222	4,315	4,556	4,770	4,990	5,089	5,137	5,295	5,433	5,687	6,071	45.98%
SC Rank - H-L	30	22	19	21	18	18	16	16	17	22	21	22	18	7

Chart 14 Fund Balance of the Higher Education Fund

Fiscal Year	Fund Balance (\$ thousands)			Unrestricted
	Restricted			
	Capital Projects	Debt Service	All other	
6/30/2003	93,432	20,204	133,049	332,097
6/30/2004	128,991	38,788	152,200	394,413
6/30/2005	116,577	24,624	184,995	415,284
6/30/2006	119,527	21,826	210,020	461,673
6/30/2007	189,590	36,940	277,674	518,058
6/30/2008	233,712	36,375	292,422	563,460
6/30/2009	248,950	45,526	298,758	576,514
6/30/2010	302,827	95,129	346,778	752,506
6/30/2011	450,982	69,301	420,325	887,237
6/30/2012	434,269	48,572	445,163	1,059,734