

Revenue and Fiscal Affairs Office E50 Section 102

Fiscal Year 2016-17 Accountability Report

SUBMISSION FORM

AGENCY MISSION

To provide independent research, analysis, and resources to the executive and legislative branches of state government, local government officials, and the private sector to facilitate informed policy decisions and administration of services.

AGENCY VISION

The Revenue and Fiscal Affairs Office will be a team of trained professionals committed to the delivery of innovative, effective, efficient customer services and information.

Please state yes or no if the agency has any major or minor (internal or external) recommendations that would allow the agency to operate more effectively and efficiently.

**RESTRUCTURING
RECOMMENDATIONS:**

No

Please identify your agency's preferred contacts for this year's accountability report.

	<u>Name</u>	<u>Phone</u>	<u>Email</u>
PRIMARY CONTACT:	Diane Porter	803.734.3802	Diane.Porter@rfa.sc.gov
SECONDARY CONTACT:	George A. Kokolis	803.734.2374	George.Kokolis@rfa.sc.gov

I have reviewed and approved the enclosed FY 2016-17 Accountability Report, which is complete and accurate to the extent of my knowledge.

Revenue and Fiscal Affairs Office E50 Section 102

AGENCY DIRECTOR
(SIGN AND DATE):

Frank A. Rainwater

Aug 24, 2017

(TYPE/PRINT NAME):

Frank A. Rainwater

BOARD/CMSN CHAIR
(SIGN AND DATE):

Edward B. Grimball

August 24, 2017

(TYPE/PRINT NAME):

Edward Grimball

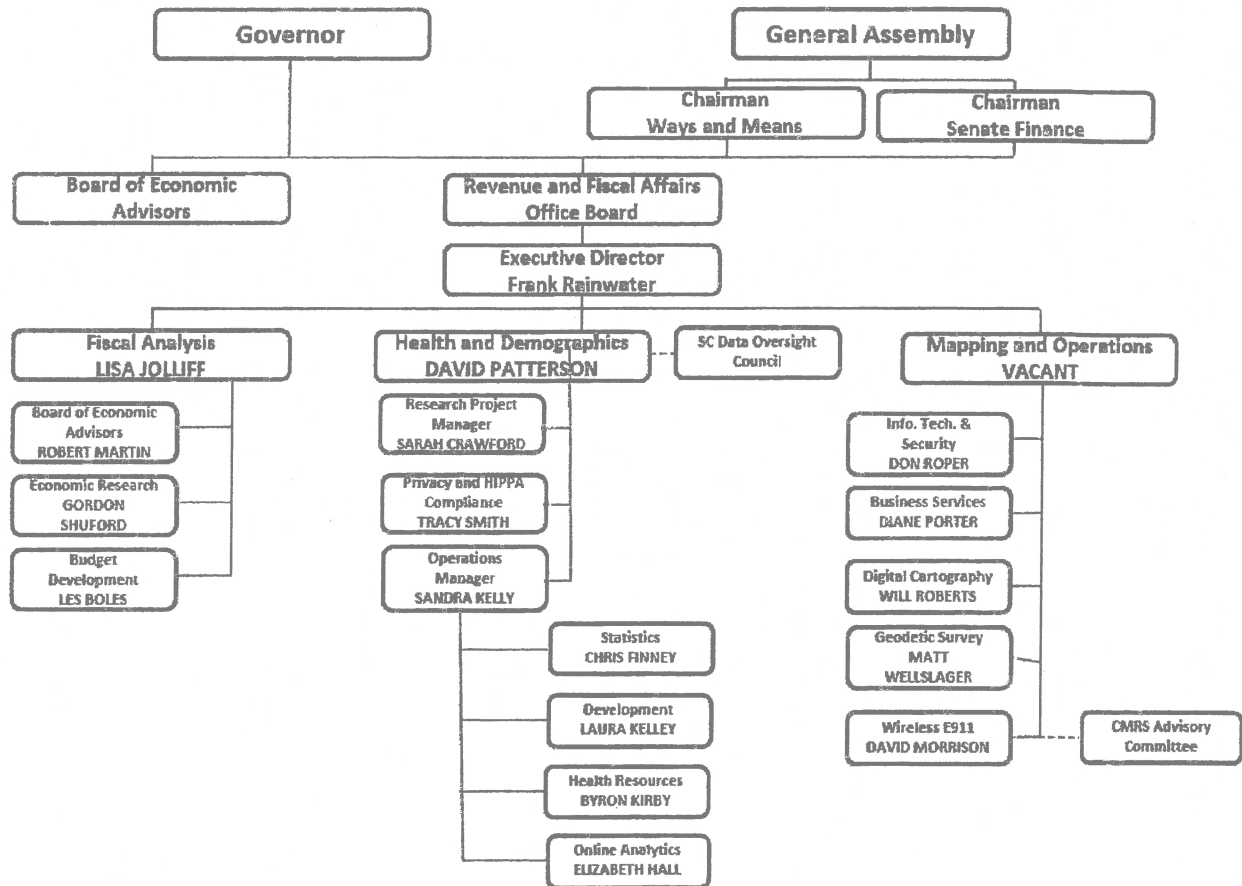
Revenue and Fiscal Affairs Office E50 Section 102

AGENCY'S DISCUSSION AND ANALYSIS

The South Carolina Revenue and Fiscal Affairs Office (RFA) was formed under the 2014 Restructuring Act and is governed by three appointed members of the Board of Economic Advisors (BEA). Under S.C. Code of Laws §11-9-820, the BEA is comprised of one member appointed by the Governor to serve as chairman, one member appointed by the chairman of the Senate Finance Committee, one member appointed by the chairman of the House Ways and Means Committee, and the Director of the Department of Revenue who serves ex officio with no voting rights. BEA members have a working knowledge and experience in economics, revenue forecasting, and the state budget process.

RFA consists of three divisions and multiple programs: Mapping and Operations which consists of Precinct Demographics, Geodetic Survey, Wireless E-911, Business Operations, and Information Technology Services; Fiscal Analysis which consists of the Board of Economic Advisors, Budget Development, and Economic Research; and Health and Demographics which consists of Development, Health Resources, Online Analytics, and Statistics. Through the various programs, RFA is responsible for providing a diverse set of fiscal and statistical analysis and services and reports for the Governor, General Assembly, state and local government entities, and the private sector. The agency is dependent upon many professional staff to respond to legislative or statutory mandates.

RFA Structure



Revenue and Fiscal Affairs Office E50 Section 102

I. Risk Assessment and Mitigation Strategies: Should the agency fail to accomplish its goals and objectives, data and analysis would not be provided to the General Assembly or local governments. This would have a detrimental impact on informed decision making at the legislative level and would affect reimbursements to municipalities and counties for E911 services. Provided that the General Assembly continues to support the agency with necessary funding and guidance, the occurrence of such an event is unlikely.

II. Restructuring Recommendations: None at this time.

Agency Name: **South Carolina Revenue and Fiscal Affairs**

Fiscal Year 2016-17
Accountability Report

Agency Code: **E50** Section: **102**

Strategic Planning Template

Type	Goal	Item # Strat	Object	Associated Enterprise Objective	Description
G	1			Government and Citizens	Ensure Continuous Agency Improvement
<i>O</i>			1.1.1		<i>Improve coordination and data flow between Fiscal Analysis Division and H&D</i>
<i>O</i>			1.1.2		<i>Review reports and documents for consistency, improvement, and/or elimination</i>
<i>O</i>			1.1.3		<i>Review services with legislative staff and identify areas for improvement</i>
<i>O</i>			1.1.4		<i>Work with counties/municipalities to decrease local FIS response time</i>
<i>O</i>			1.1.5		<i>Develop and implement a formal plan for internal communications</i>
<i>O</i>			1.1.6		<i>Develop and implement an emergency preparedness program</i>
<i>O</i>			1.1.7		<i>Ensure EPMS documentation is done in a timely manner for new and existing employees</i>
S		1.2			Health and Demographics (H&D) Unit Improvements
<i>O</i>			1.2.1		<i>Develop and test budget management software with Budget Development Unit</i>
<i>O</i>			1.2.2		<i>Provide statistical support for healthcare questions and issues</i>
<i>O</i>			1.2.3		<i>Streamline contract process for master agreements</i>
<i>O</i>			1.2.4		<i>Streamline DMV geocoding workflow</i>
<i>O</i>			1.2.5		<i>Align H&D with RFA SWOT analysis and communication plan</i>
<i>O</i>			1.2.6		<i>Develop draft performance metrics for H&D</i>
<i>O</i>			1.2.7		<i>H&D staff participate in all RFA workgroups</i>
<i>O</i>			1.2.8		<i>Certify all H&D supervisors at Associate Public Manager level</i>
<i>O</i>			1.2.9		<i>Conduct comparative analysis between commercial software and in-house algorithm</i>
<i>O</i>			1.2.10		<i>Streamline data request process and respond to customer survey results</i>
S		1.3			CMRS E9-1-1 Unit Improvements
<i>O</i>			1.3.1		<i>Implement five-year NG9-1-1 Strategic Plan</i>
<i>O</i>			1.3.2		<i>Develop RFP and coordinate with vendor to create a statewide ESInet program</i>
S		1.4			Geodetic Unit Improvements
<i>O</i>			1.4.1		<i>Implement height modernization campaign</i>
<i>O</i>			1.4.2		<i>Work with counties to provide Quality Assurance for State Mapping Program</i>
<i>O</i>			1.4.3		<i>Collection of accuracy points for LIDAR Project in Georgetown County</i>
<i>O</i>			1.4.4		<i>Finalize county boundary surveys on up to five different projects</i>
<i>O</i>			1.4.5		<i>Research creation of operational backup of Real Time Network in case of system failure</i>
<i>O</i>			1.4.6		<i>Improve data coordination with E911 and cartography</i>
S		1.5			Digital Cartography Unit Improvements
<i>O</i>			1.5.1		<i>Develop interactive public web mapping application showing House and Senate district</i>
S		1.6			Budget Development Unit Improvements
<i>O</i>			1.6.1		<i>Improve LBS algorithms, coding, reporting, and staff training</i>
<i>O</i>			1.6.2		<i>Provide ad-hoc and other special reports as requested</i>
<i>O</i>			1.6.3		<i>Develop desktop references for each state agency</i>
S		1.7			Economic Research Unit Improvements
<i>O</i>			1.7.1		<i>Streamline Fiscal Impact Statement (FIS) preparation process</i>
<i>O</i>			1.7.2		<i>Utilize new FIS preparation process for training new hires, including training modules</i>
S		1.8			Workforce Development

Agency Name: **South Carolina Revenue and Fiscal Affairs**

Fiscal Year 2016-17
Accountability Report

Agency Code: **E50** Section: **102**

Strategic Planning Template

Type	Goal	Item # Strat	Object	Associated Enterprise Objective	Description
O			1.8.1		Promote employee training and conduct employee recognition SWOT survey
O			1.8.2		Develop long-term plan to identify bench strength in preparation for succession planning
O			1.8.3		Identify and report on key performance measures evaluating employee morale
O			1.8.4		Develop employee compensation review process based on responsibilities/performance
O			1.8.5		Implement Employee Recognition Program aligned with RFA objectives and mission
O			1.8.6		Consolidate agency employees into one office location
O			1.8.7		Utilize employee feedback to promote team dynamics and relationship building
O			1.8.8		Provide professional development opportunities for employees
O			1.8.9		Review positions as vacancies occur, prioritize resources
O			1.8.10		Identify and utilize tools to enhance employee's work experience
O			1.8.11		Implement new EPMS changes to align with agency goals and objectives
O			1.8.12		Develop an affirmative action plan to promote diversity
G	2			Maintaining Safety, Integrity and Security	Ensure Information Security
S		2.1			Information Technology Unit Improvements
O			2.1.1		Improve employee awareness of information security
O			2.1.2		Improve SharePoint site
O			2.1.3		Conduct planning and implement improvements to SCHIEX
S		2.2			State Disaster Recovery Plan
O			2.2.1		Ensure critical RFA programs are included in the State Disaster Recovery Plan
O			2.2.2		Ensure RFA is an active participant in disaster recovery efforts
G	3			Public Infrastructure and	Increase Economic Development
S		3.1			Board of Economic Advisors (BEA)
O			3.1.1		Development and use of revenue digest for monthly revenue workgroup meetings
O			3.1.2		Coordinate with Comptroller General & SCEIS to ensure consistency in revenue reports
O			3.1.3		Improve revenue forecasting; general fund revenue forecast within 1.5% of actual at end of FY
O			3.1.4		Confer with Department of Transportation to ensure accuracy of motor fuel estimates
O			3.1.5		Refine revenue monitoring to ensure consistency with general fund revenue forecast
O			3.1.6		Improve sales and use exemption report
O			3.1.7		Improve taxpayer savings estimates
O			3.1.8		Increase coordination with Regional Advisory Committee via improved documentation
O			3.1.9		Research revenue/economic issues affecting policies related to SC's economic fitness
G	4			Government and Citizens	Improve Customer Service and Partnerships
S		4.1			Customer Satisfaction
O			4.1.1		Update customer satisfaction survey to identify weaknesses and develop action plans
O			4.1.2		Monitor committee-selected key performance measures
O			4.1.3		Conduct in-depth review with internal, legislative, and external customers
S		4.2			Data Partnerships with State Agencies, Private Entities, and Non-Profits
O			4.2.1		SC DHHS: Healthy Outcomes Plan, Birth Outcomes Initiative, AccessHealth enrollees

Agency Name: **South Carolina Revenue and Fiscal Affairs**

Fiscal Year 2016-17
Accountability Report

Agency Code: **E50** Section: **102**

Strategic Planning Template

Type	Goal	Item # Strat	Object	Associated Enterprise Objective	Description
O			4.2.2		SCDE: Direct certification program & poverty index for school funding allocations
O			4.2.3		State Homeless Coalition: Provide descriptive indicators to assist in obtaining funding
O			4.2.4		SC DSS: Link DSS/Medicaid data for Adult Protective Service clients
O			4.2.5		SCHIEX: Serve as primary contractor for SCHIEX technical infrastructure
O			4.2.6		SC DJJ: RFA houses data and links persons across multiple service providers
O			4.2.7		SLED:RFA houses data and links persons across multiple service providers
O			4.2.8		SC PPS: RFA houses data and links persons across multiple service providers
O			4.2.9		SCDC:RFA houses data and links persons across multiple service providers
O			4.2.10		DAODAS:RFA houses data and links persons across multiple service providers
O			4.2.11		PEBA:RFA houses data and links persons across multiple service providers
O			4.2.12		SC Dept. of Voc. Rehab: RFA houses data and links persons across multiple service providers
O			4.2.13		SC DHEC: RFA houses data and links persons across multiple service providers
O			4.2.14		SC DEW: RFA houses data and links persons across multiple service providers
O			4.2.15		SC DDSN: RFA houses data and links persons across multiple service providers
O			4.2.16		SC Dept. of Revenue: RFA provides individual income tax, sales tax, & property tax data
O			4.2.17		SC Dept. of Commerce: RFA assists with identifying potential business impacted by disaster
O			4.2.18		SC hospitals & surg./rehab/sub. abuse/outpatient centers: Link persons across multiple service providers
O			4.2.19		SC home health agencies: RFA houses data and links persons across multiple service providers
O			4.2.20		SC First Steps: RFA houses data and links persons across multiple service providers
O			4.2.21		FCC: Report on 911 operations and wireless 911 funding in SC
O			4.2.22		SC General Assembly: Share information on state agency budgets in development of appropriations bill
O			4.2.23		U.S. Census Bureau: RFA is partner for decennial census and annual population estimates
O			4.2.24		Local 911 coordinators/directors: Assist in distribution of wireless 911 surcharges to local jurisdictions
O			4.2.25		SC DMH: RFA houses data and links persons across multiple service providers
O			4.2.26		Develop and maintain data and links for K-12 and university/technical school effectiveness
S		4.3		Education and Outreach	
O			4.3.1		Provide outreach on benefits of Helght Modernization & Real Time Network resources
O			4.3.2		Assist in precinct & redistricting issues, including verification of voter registration districts
O			4.3.3		Assist counties with addressing projects

Agency Name: **South Carolina Revenue and Fiscal Affairs**

Fiscal Year 2016-17
Accountability Report

Agency Code: **E50** Section: **102**

Performance Measurement Template

Item	Performance Measure	Target Value	Actual Value	Future Target Value	Time Applicable	Data Source and Availability	Calculation Method	Associated Objective(s)
1	Percentage of Fiscal Impact Statements prepared in 14 days or less	75%	75.7%	75%	July 1 - June 30	Fiscal impact database, updated daily	Turnaround time calculated using database capturing when request came in and when completed impact sent to requestor	1.7.1
2	Increased usage of Real Time Network	715	768	785	July 1 - June 30	# of subscriptions received	# of subscriptions actually received - new and renewals	4.3.1
3	Retention rate of users of the Real Time Network	>95%	94.2%	>95%	July 1 - June 30	# of renewals received	Comparison of the renewals received for FY14-15 to FY15-16	4.3.1
4	Expansion of SCHIEX under contract with the SC Health Information Partnership - increase # of clinical viewers usage		658		July 1 - June 30	Data collected by Health and Demographics Unit		2.1.3, 4.2.5
5	Expansion of SCHIEX under contract with the SC Health Information Partnership - increase # of Direct Web client users		792		July 1 - June 30	Data collected by Health and Demographics Unit		2.1.3, 4.2.5
6	Expansion of SCHIEX under contract with the SC Health Information Partnership - Increase # of Query Exchange Patient Registrations		2,359,788 patient registrations		July 1 - June 30	Data collected by Health and Demographics Unit		2.1.3, 4.2.5
7	Increase reimbursement requests from the SC CRMS Wireless E911 fund to local SC 911 jurisdictions and wireless service providers	200	227 requests	200	July 1 - June 30	Requests submitted and reviewed by staff	# of requests actually received by each jurisdiction for items that are eligible for reimbursement	
8	Distribution of funds to the local SC 911 jurisdictions	N/A	\$11,662,498	N/A	July 1 - June 30	Total number of 911 calls by each jurisdiction	Fund (a percentage of E911 wireless fees) distributed quarterly based on volume of wireless 911 calls received in each jurisdiction	
9	Baseline for measuring employee awareness of information security	100%	87%	100%	July 1 - June 30	Training log	# of employees/total # surveys completed	2.1.1
10	Number of agency-wide employee meetings/events	6	6	6	July 1 - June 30	Sign-in records	# of meetings scheduled	1.8.3, 1.8.5
11	Percent of planning stage documents completed within two months of universal data for existing employees and within one month of hire	100%	100%	100%	July 1 - June 30	HR records	# of employees/# of employees' completed planning stages	1.1.7
12	Percent of employees responding to employee surveys	75%	63%	75%	July 1 - June 30	Employee survey results	# employees/# completed surveys	1.8.3, 1.8.5
13	Employee appreciation score	75%	71% felt appreciated by direct supervisor, 60% by the Executive Director	75%	July 1 - June 30	Employee survey results	Response from annual Communication and Recognition Survey	1.8.3, 1.8.5
14	Improve revenue forecasting	General fund revenue forecast within 1.5% of actual FY-end revenues	0.34%	1.50%	July 1 - June 30	Revenues as captured in SCEIS	Collected FY-end revenues divided by estimated FY-end revenues	3.1.3

Agency Name: **South Carolina Revenue and Fiscal Affairs**

Fiscal Year 2016-17
Accountability Report

Agency Code: **E50** Section: **102**

Performance Measurement Template

Item	Performance Measure	Target Value	Actual Value	Future Target Value	Time Applicable	Data Source and Availability	Calculation Method	Associated Objective(s)
15	Customer satisfaction survey response rate	100%	20.5%	100	July 1 - June 30	N/A	Response from Customer Service Satisfaction Survey	4.1.1
16	Customer satisfaction survey score	5 (scale of 0-5, 5 being the highest score)	4.67	5	July 1 - June 30	N/A	Response from Customer Service Satisfaction Survey	4.1.1
17	SC Wireless E911 survey score	5 (scale of 0-5, 5 being the highest score)	4.6	5	July 1 - June 30	N/A	Response from E911 Wireless Survey	1.3.1
18	Provide professional development opportunities for employees as measured by # of training hours	640 hours	1310 hours	N/A	July 1 - June 30	Training request forms	Number of training hours/Number of hours required to complete training	1.8.9
19	Review positions as vacancies occur and prioritize resources	100% of vacant and current key positions reviewed	100% reviewed, action plan formed	N/A	July 1 - June 30	HR records	Number of vacated/TERI positions reviewed for classification, compensation and need to backfill	1.8.10

Agency Name: **South Carolina Revenue and Fiscal Affairs Office**

Agency Code: **E50** Section: **554** **102**

Fiscal Year 2016-17
Accountability Report

Program/Title	Purpose	FY 2015-16 Expenditures (Actual)				FY 2016-17 Expenditures (Projected)				Program Template Associated Objective(s)
		General	Other	Federal	TOTAL	General	Other	Federal	TOTAL	
I. Administration	Provide leadership for the agency, including BEA and RFA Board	\$ 184,968			\$ 184,968	\$ 188,708			\$ 188,708	
II. Program Services	Each program within RFA have diverse responsibilities in gathering, researching, maintaining, and providing independent and professional analysis, information, and reports to state and local officials regarding demographic, economic, redistricting, financial, geodetic, health, and other data in developing public policy, fiscal stability, and effective administration of programs.	\$ 3,806,880	\$ 3,251,330		\$ 7,058,210	\$ 3,618,619	\$ 4,965,104		\$ 8,583,723	
III. Employee Benefits		\$ 944,969	\$ 741,053		\$ 1,686,022	\$ 1,146,632	\$ 949,170		\$ 2,095,802	

Agency Name: **South Carolina Revenue and Fiscal Affairs**

Fiscal Year 2016-17
Accountability Report

Agency Code: **E50** Section: **102**

Item #	Law Number	Jurisdiction	Type of Law	Statutory Requirement and/or Authority Granted	Legal Standards Template
					Associated Program(s)
1	<u>1-11-50</u>	State	Statute	Certain funds of Revenue and Fiscal Affairs Office and the Executive Budget Office carried forward.	Business Services
2	<u>1-11-360</u>	State	Statute	Office of Precinct Demographics; establishment and responsibilities.	Digital Cartography
3	<u>1-23-10 et seq.</u>	State	Statute	State Agency Rule Making and Adjudication of Contested Cases; State Register and Code of Regulations; RFA must submit a final assessment report on promulgated regulations upon written request by two members of the General Assembly.	Economic Research
4	<u>2-1-220</u>	State	Statute	Legislative appropriations; exemption from RFA and other entities' approval regarding expenditure, management or transfer of legislative appropriations.	Budget Development

5	<u>2-7-62</u>	State	Statute	Report to General Assembly on transfer of funds resulting from transfers for responsibilities between agencies during consideration of general appropriation act.	Budget Development
6	<u>2-7-66</u>	State	Statute	Create separate subsection for Education Improvement Act appropriations to agencies and entities other than Education Department.	Budget Development
7	<u>2-7-68</u>	State	Statute	Format for general appropriations bill, new provisos, and sections providing for employment of additional personnel.	Budget Development
8	<u>2-7-69</u>	State	Statute	Report explanation and justification of new positions at each stage of consideration of appropriation bill; provide copies of Analysis of Change in appropriations by agency.	Budget Development
9	<u>2-7-70</u>	State	Statute	Itemization required for bills carrying appropriation.	Budget Development

10	<u>2-7-71</u>	State	Statute	Tax bills; requirement of estimated revenue impact statement.	BEA, Budget Development, and Economic Research
11	<u>2-7-72</u>	State	Statute	Bills and resolutions requiring expenditure of funds shall have fiscal impact statements.	BEA, Budget Development, and Economic Research
12	<u>2-7-73</u>	State	Statute	Bills and resolutions mandating health insurance coverage shall have fiscal impact statements.	BEA, Budget Development, and Economic Research
13	<u>2-7-74</u>	State	Statute	Requirement for a statement of estimated fiscal impacts of new criminal offenses and sentencing changes.	BEA, Budget Development, and Economic Research
14	<u>2-7-76</u>	State	Statute	Requirement for fiscal or revenue impact statements for certain bills and resolutions affecting the expenditure of funds by counties or municipalities and taxes imposed by political subdivisions.	BEA, Budget Development, and Economic Research

15	<u>2-7-78</u>	State	Statute	Requirements for certification of revenue estimate in the Governor's recommended appropriations bill and the conference committee report.	BEA, Budget Development, and Economic Research
16	<u>2-41-50</u>	State	Statute	Requirement to make professional and clerical support services available to the Joint Committee on Taxation.	BEA, Budget Development, and Economic Research
17	<u>4-10-540</u>	State	Statute	Personal Property Tax Exemption Sales Tax Act; BEA must certify rate of Sales and Use tax necessary in a county to replace vehicle tax.	BEA
18	<u>4-10-790</u>	State	Statute	The RFA shall furnish data to the State Treasurer and to the applicable political subdivisions receiving local option sales tax revenues for the purpose of calculating distributions and estimating revenues.	Economic Research
19	<u>4-12-30</u>	State	Statute	County Councils shall seek the advise and assistance of the Department of Commerce and the Revenue and Fiscal Affairs Office in making findings when entering into an inducement agreement which provides for fees in lieu of taxes.	BEA and Economic Research

20	<u>4-23-10</u>	State	Statute	Murrell's Inlet-Garden City Fire District in Georgetown and Horry Counties consists of area on official RFA map.	Digital Cartography
21	<u>4-23-1200</u>	State	Statute	Landrum Fire and Rescue District in Greenville and Spartanburg Counties defined, in part, by RFA map.	Digital Cartography
22	<u>6-1-50</u>	State	Statute	Counties and municipalities receiving revenues from state aid, currently known as Aid to Subdivisions, shall submit annually to the Revenue and Fiscal Affairs Office a financial report detailing their sources of revenue, expenditures by category, indebtedness, and other information as the Revenue and Fiscal Affairs Office requires.	Economic Research
23	<u>6-1-85</u>	State	Statute	The Office of Research and Statistics of the Revenue and Fiscal Affairs Office, shall monitor and review the tax burden borne by the classes of property listed in Article X, Section 1 of the State Constitution. To determine the tax burden of each class of property, the Office of Research and Statistics may use a ratio that compares total property taxes paid by the property class divided by the total fair market value of the property class. Tax incident statement prepared by RFA must be attached to bills potentially shifting tax incidence.	Economic Research
24	<u>6-1-320</u>	State	Statute	The Revenue and Fiscal Affairs Offices shall compute the increase in the average of the twelve monthly consumer price indices for the most recent twelve-month period consisting of January through December of the preceding calendar year, plus, beginning in 2007, the percentage increase in the previous year in the population of the entity as determined by the Office of Research and Statistics of the Revenue and Fiscal Affairs Office. These inflation factors are used by local governing bodies as a limit on millage rate increases.	Economic Research

25	<u>6-27-30</u>	State	Statute	Funding of Local Government Fund from general fund revenues is equal to not less than four and one-half percent of general fund revenues of the latest completed fiscal year.	Budget Development
26	<u>7-7-30 et seq.</u>	State	Statute	Polling precinct lines for counties are as shown on official map prepared by and on file with RFA.	Mapping & Census
27	<u>8-11-195</u>	State	Statute	State employee furloughs may be authorized based on BEA estimate of a deficit exceeding General Fund Reserve and Capital Reserve Fund.	BEA
28	<u>11-9-110</u>	State	Statute	Organization to which contribution is appropriated to submit statement to Executive Budget Office and the Revenue and Fiscal Affairs Office as to nature and function of organization and use of contribution.	Budget Development
29	<u>11-9-820</u>	State	Statute	Board of Economic Advisors; membership and appointment; reporting; staffing.	BEA

30	<u>11-9-825</u>	State	Statute	Supplemental staff to assist board; meetings.	BEA
31	<u>11-9-830</u>	State	Statute	Duties of Board of Economic Advisors.	BEA
32	<u>11-9-840</u>	State	Statute	Procedures relative to changes in revenue or expenditure forecast or projection; adjustments in appropriations or requests; meetings of board; board as official state voice on economic matters.	BEA
33	<u>11-9-880</u>	State	Statute	Board of Economic Advisors to make forecasts of economic conditions; adjustments to forecasts; review of revenues; synopsis of revenue shortfalls; publication of reports.	BEA
34	<u>11-9-890</u>	State	Statute	Delineation of fiscal year revenue estimates by quarters; reduction of general fund appropriations; action to avoid year-end deficit.	BEA

35	<u>11-9-1110</u>	State	Statute	Revenue and Fiscal Affairs Office established.	All
36	<u>11-9-1120</u>	State	Statute	Board of Economic Advisors division of RFA shall maintain the organizational and procedural framework under which it is operating, and exercise its powers, duties, and responsibilities, as of the effective date of this section.	BEA
37	<u>11-9-1130</u>	State	Statute	The Office of Research and Statistics Economic Research division and Office of Precinct Demographics are established and powers, duties and responsibilities defined.	Economic Research and Digital Cartography
38	<u>11-9-1140</u>	State	Statute	The Office of State Budget division of the office shall maintain the organizational and procedural framework under which it is operating, and exercise its powers, duties, and responsibilities, as of the effective date of this section.	Budget Development
39	<u>11-11-10</u>	State	Statute	RFA directed to employ staff and call upon DOR for information.	Budget Development

40	<u>11-11-140</u>	State	Statute	Limits on appropriation of surplus general fund revenues; revenue derived from change in accounting method.	Budget Development
41	<u>11-11-150</u>	State	Statute	In calculating estimated state individual and corporate income tax revenues for a fiscal year the Board of Economic Advisors shall deduct amounts sufficient to pay the reimbursement required pursuant: Section 12-37-220 for the homestead exemption for persons over age sixty-five or disabled, but not including the portion attributable to school operating millage; Section 12-37-935(B) for manufacturer's additional depreciation; Section 12-37-450 for the inventory tax exemption; and Section 4-10-540(A) for the reimbursement provided for personal property taxes not collected on private passenger motor vehicles, motorcycles, general aviation aircraft, boats, and boat motors.	BEA and Economic Research
42	<u>11-11-155</u>	State	Statute	The Board of Economic Advisors shall account for the Homestead Exemption Fund revenue separately from general fund revenues, and the board shall make an annual estimate of the receipts by the Homestead Exemption Fund by February fifteenth of each year. This estimate shall be transmitted to the State Treasurer, Comptroller General, the Chairmen of the House Ways and Means Committee and the Senate Finance Committee, and to each school district and county.	BEA and Economic Research
43	<u>11-11-156</u>	State	Statute	Tier three reimbursements from the Homestead Exemption Fund must be increased on an annual basis by an inflation factor equal to the percentage increase in the previous year of the Consumer Price Index, Southeast Region, as published by the United States Department of Labor, Bureau of Labor Statistics plus the percentage increase in the previous year in the population of the State as determined by the Revenue and Fiscal Affairs Office.	Economic Research
44	<u>11-11-220</u>	State	Statute	Contingency Reserve Fund established. BEA notified of amount and shall recognize as surplus.	BEA

45	<u>11-11-350</u>	State	Statute	Each state agency, department, institution, or entity receiving in the aggregate one percent or more of the state's general fund appropriations for any fiscal year shall provide to the Revenue and Fiscal Affairs Office, and the Executive Budget Office an estimate of its planned general fund expenditures for the next three fiscal years. This data, in conjunction with the Board of Economic Advisors' long-term revenue estimate, must be compiled by the Revenue and Fiscal Affairs Office, and the Executive Budget Office into a three-year financial plan that will assist the State in determining and planning for its long-term financial commitments. The plan must be updated annually and prepared for submission to the State Fiscal Accountability Authority and the Governor, the Speaker of the House of Representatives, and the President Pro Tempore of the Senate during the second quarter of each fiscal year.	Budget Development and BEA
46	<u>11-11-410</u>	State	Statute	Appropriations subject to spending limitation; financial emergency; surplus funds. RFA must determine the state's personal income and use it to annually compute and certify figure to limit appropriations.	Economic Research and Budget Development
47	<u>11-11-420</u>	State	Statute	Limitation on permanent state positions; emergency suspension. RFA must certify that an appropriation bill amendment increasing the number of state employees does not exceed the limit before the amendment may be introduced.	Budget Development
48	<u>12-3-10</u>	State	Statute	South Carolina Taxation Realignment Commission created; membership; duties; report and recommendations for effectuating amendments. BEA must prepare revenue impact for the Commission's recommendations.	BEA and Economic Research
49	<u>12-6-1140(10)</u>	State	Statute	Maximum income tax deduction calculation for a volunteer firefighter, rescue squad member, volunteer member of a Hazardous Materials (HAZMAT) Response Team, reserve police officer, Department of Natural Resources deputy enforcement officer, a member of the State Guard, or a volunteer state constable.	Economic Research

50	<u>12-6-2320(B)</u>	State	Statute	Allocation and apportionment of taxpayer's income when provisions unfairly represent taxpayer's business activity; agreement with taxpayer; provision for taxpayer constructing or operating qualified recycling facility. Data from RFA used to determine per capita income from purposes of agreements between DOR and taxpayer allocating taxpayer's income.	Economic Research
51	<u>12-10-80</u>	State	Statute	The maximum job development credit a qualifying business may claim for new employees must be adjusted annually by an inflation factor determined by the Revenue and Fiscal Affairs Office.	Economic Research
52	<u>12-10-81</u>	State	Statute	The hourly base wages used to determine the maximum job development credit a qualifying business may claim for new employees must be adjusted annually by an inflation factor determined by the Revenue and Fiscal Affairs Office.	Economic Research
53	<u>12-23-815</u>	State	Statute	Information from RFA and DHEC to form basis for indigent health care assessments.	Health and Demographics
54	<u>12-44-40</u>	State	Statute	Fee agreement; economic development property to be exempt from ad valorem taxation; exemption period; inducement resolution; location of exempt property; criteria to qualify as economic development property. County council must seek advice and assistance of RFA or DOR in making required findings about a fee in lieu of property taxes project.	BEA

55	<u>15-32-220</u>	State	Statute	Noneconomic damages limit; exceptions; annual adjustment based on Consumer Price Index. BEA calculates inflation increases for noneconomic damages.	BEA
56	<u>15-32-530</u>	State	Statute	Awards not to exceed certain limits; Revenue and Fiscal Affairs Office to calculate adjustments to maximum punitive damage awards; publication in State Register.	BEA
57	<u>15-41-30</u>	State	Statute	Property exempt from attachment, levy, and sale. BEA adjusts for inflation the amount of property value that is exempt by March first of each even-numbered year.	BEA
58	<u>22-2-30</u>	State	Statute	Assistance in establishing jury areas; legislative adoption of jury areas. RFA provides demographic information upon request.	Digital Cartography
59	<u>22-2-190</u>	State	Statute	Jury areas for magistrates courts in the various counties of the State are established and defined by maps on file with RFA.	Digital Cartography

60	<u>23-47-30 et seq.</u>	State	Statute	Public Safety Communications Center - 911 funding and CMRS Emergency Telephone Advisory Committee. RFA reviews and approves local government 911 systems plans, annually calculates and approves the amount of the CMRS levy, and directs the State Treasurer in disbursement of funds from the CMRS surcharge account.	Wireless E911
61	<u>27-2-10 et seq.</u>	State	Statute	Coordinate System for Defining Location of Points Within the State - Duties defined for the South Carolina Geodetic Survey as established within the Revenue and Fiscal Affairs Office.	Geodetic Survey
62	<u>31-3-20</u>	State	Statute	Definition of low to moderate income for the Housing Authority from the latest available statistics furnished to the Authority by the Revenue and Fiscal Affairs Office.	Economic Research
63	<u>31-13-170</u>	State	Statute	Definition of low to moderate income for the Housing Authority based on the latest available statistics furnished to the Authority by the Revenue and Fiscal Affairs Office.	Economic Research
64	<u>38-71-1445</u>	State	Statute	The South Carolina Department of Insurance and Revenue and Fiscal Affairs Office shall submit to the Office of the Governor and the General Assembly by January 1, 2010, a report on the effectiveness of the health group cooperative in expanding the availability of health insurance coverage for small employers.	Health and Demographics

65	<u>41-29-120</u>	State	Statute	RFA will continue to work with the Department of Employment and Workforce to develop and continuously improve a customer service portal, to include increased interagency integration and data sharing, and keep the General Assembly regularly informed of its progress in upgrading its computer system through a possible multistate compact in cooperation with the federal government.	Health and Demographics
66	<u>44-5-40</u>	State	Statute	RFA will coordinate with the South Carolina Department of Health and Environmental Control and other agencies as appropriate in order to identify the data necessary for health planning and to develop the systems necessary to collect the data within the appropriate organizational structure.	Health and Demographics
67	<u>44-6-150</u>	State	Statute	Medically Indigent Assistance Program; reporting of charges for sponsored patients; duties of commission; duty to provide unreimbursed medical care to indigent persons. Hospital charges for patients sponsored by the Medically Indigent Assistance Program must be reported to the Revenue and Fiscal Affairs Office pursuant to Section 44-6-170.	Health and Demographics
68	<u>44-6-155</u>	State	Statute	The South Carolina Department of Health and Human Services must provide up to two hundred forty thousand dollars from the Medicaid Expansion Fund to reimburse the Revenue and Fiscal Affairs Office and hospitals for the cost of collecting and reporting data pursuant to Section 44-6-170.	Health and Demographics
69	<u>44-6-170</u>	State	Statute	Establishment of the Data Oversight Council to make recommendations to the General Assembly concerning the collection and release of health care-related data by the State which the council considers necessary to assist in the formation of health care policy in the State. RFA shall promulgate regulations regarding collection of patient data and convene a task force to make recommendations to the Council.	Health and Demographics

70	<u>44-6-180</u>	State	Statute	The Revenue and Fiscal Affairs Office shall use patient-identifiable data collected pursuant to Section 44-6-170 for the purpose of linking various data bases to carry out the purposes of Section 44-6-170. Linked data files must be made available to those agencies providing data files for linkage. No agency receiving patient-identifiable data collected pursuant to Section 44-6-170 may release this data in a manner such that an individual patient or provider may be identified except as provided in Section 44-6-170.	Health and Demographics
71	<u>44-35-40</u>	State	Statute	RFA will coordinate with the South Carolina Department of Health and Environmental Control on procedures for the disclosure of confidential information in the Central Cancer Registry to researchers for the purposes of cancer prevention, control, and research.	Health and Demographics
72	<u>44-35-50</u>	State	Statute	The Central Cancer Registry shall coordinate, to the fullest extent possible, with the Revenue and Fiscal Affairs Office, for the complete, timely, and accurate collection and reporting of cancer data.	Health and Demographics
73	<u>44-36-10</u>	State	Statute	RFA must promulgate regulations approved by the South Carolina Data Oversight Committee regarding patient contact data for the Alzheimer's Disease Registry within the South Carolina School of Public Health.	Health and Demographics
74	<u>44-36-30</u>	State	Statute	For purposes of maintaining the Alzheimer's Disease Registry, the School of Public Health may access appropriate confidential data reported to the Revenue and Fiscal Affairs Office in accordance with Section 44-6-170.	Health and Demographics

75	<u>44-61-160</u>	State	Statute	RFA can access patient data collected under the Emergency Medical Services Act for purposes of maintaining the database and to provide access to appropriate confidential data reported in accordance with this Act.	Health and Demographics
76	<u>44-61-330</u>	State	Statute	RFA must promulgate regulations approved by the South Carolina Data Oversight Committee regarding the gathering of statewide pediatric emergency and critical care medical services data.	Health and Demographics
77	<u>44-61-340</u>	State	Statute	For purposes of maintaining the statewide pediatric emergency and critical care medical services database, the RFA and the Department of Health and Human Services may access appropriate confidential data reported in accordance with Section 44-61-160.	Health and Demographics
78	<u>48-22-20</u>	State	Statute	The South Carolina Geodetic Survey must remain with the Division of Research and Statistical Services as the South Carolina Geodetic Survey. All property, equipment, and personal services monies, including all employee contributions and other fringe benefits used by the Geodetic Survey, must remain with the Division of Research and Statistical Services.	Geodetic Survey
79	<u>58-23-1700(J)</u>	State	Statute	RFA must prepare and make available to the public Geographic Information System (GIS) for use in determining whether each prearranged trip through a transportation network company occurred within the incorporated boundaries of a municipality, or outside of the incorporated boundaries of a municipality and within the boundaries of a county of this State.	Digital Cartography

80	<u>59-18-1530</u>	State	Statute	RFA will calculate the current southeastern average teacher salary. Teachers assigned to below average and school/district at-risk schools will receive their salary and a supplement equal to fifty percent of the current southeastern average teacher salary .	Economic Research
81	<u>59-18-1950</u>	State	Statute	RFA shall develop, implement, and maintain a universal identification system that includes information for measuring the continuous improvement of the state public education system and college and career readiness and success of its graduates.	Economic Research
82	<u>59-20-20</u>	State	Statute	RFA will annually receive the defined minimum program established annually by the State Board of Education that is necessary to provide public school students in the State with minimum educational programs designed to meet their needs. The State Board of Education shall transmit a per-weighted pupil estimate of the full implementation of the defined minimum program for each budgetary year.	Economic Research
83	<u>59-20-40</u>	State	Statute	Each year the Revenue and Fiscal Affairs Office shall submit to the Legislature an estimate of the projected rate of inflation for the fiscal year to be budgeted, and the base student cost shall be adjusted to incorporate the inflated cost of providing the Defined Minimum Program.	Economic Research
84	<u>59-20-50</u>	State	Statute	RFA must provide the General Assembly during their deliberations on the annual appropriations bill the southeastern average teacher salary. The southeastern average teacher salary is the average of the average teachers' salaries of the southeastern states.	Economic Research

85	<u>59-21-1030</u>	State	Statute	RFA must provide an inflation factor to school district boards of trustees or any other appropriate governing body of a school district. Beginning in 1985-86, local financial effort for noncapital programs must be adjusted for an inflation factor so that the level of financial effort per pupil for noncapital programs is maintained as a minimum effort.	Economic Research
86	<u>59-110-70</u>	State	Statute	RFA will collaborate with the Office for Health Care Workforce Research, the South Carolina Center for Nursing Leadership, health professional education programs, professional associations representing the various health profession disciplines, and the health care delivery system to monitor the need for and educational capacity for nurses in South Carolina.	Health and Demographics
87	<u>59-150-350</u>	State	Statute	The Board of Economic Advisors, in conjunction with the Lottery Commission, must provide to the General Assembly, in a separate estimate, the amount of projected net lottery proceeds for the upcoming fiscal year.	BEA
88	<u>59-156-190</u>	State	Statute	The Department of Education may retain \$185 for the transportation of each four-year-old student. This amount annually must be increased by the same projected rate of inflation as determined by the Revenue and Fiscal Affairs Office for the Education Finance Act.	Economic Research
89	<u>19-200 to 19-204</u>	State	Regulation	Standards for implementation, operation, and funding of 9-1-1 local emergency telephone services system. RFA duties include reviewing and approval of government applications to implement 9-1-1 systems and approval of an annual 9-1-1 surcharge on commercial mobile radio system subscribers.	Wireless E911

90	<u>19-200 to 19-205</u>	State	Regulation	Data reporting requirements pertaining to South Carolina hospitals. RFA will specify the formats and data elements for the submission of data in conjunction with the Data Oversight Council. RFA may assess a civil fine for failure to comply with these regulations.	Health and Demographics
91	<u>19-200 to 19-206</u>	State	Regulation	RFA shall collect ambulatory encounter data from any health care setting providing care on an outpatient basis. RFA may assess a civil fine for failure to comply with these regulations.	Health and Demographics
92	<u>19-200 to 19-207</u>	State	Regulation	The RFA shall release medical encounter data as directed by the Data Oversight Council.	Health and Demographics
93	<u>19-200 to 19-208</u>	State	Regulation	The South Carolina Geodetic Survey must determine specifications for accuracy in the location and elevations of beach survey monuments.	Geodetic Survey
94	<u>19-200 to 19-209</u>	State	Regulation	RFA shall coordinate with counties obtaining new photography or reflights of existing photography, recommend whether a deviation in specified mapping scale proposed by a county is sufficient, and publish "Standards and Procedures for County Base Mapping" which counties must meet if it elects a coordinate base mapping system.	Geodetic Survey

95	1.3	State	Proviso	RFA must estimate per pupil state, federal, and local revenues for each school district for the current fiscal year. These estimates must be posted in a prominent place on the RFA website. RFA shall also post the one hundred thirty-five day average daily membership for each school district and per pupil state, federal and local revenues, excluding revenues of local bond issues, based on the most recent audited financial statement as reported annually pursuant to Section 59 17-100.	Economic Research
96	1A.37	State	Proviso	RFA shall estimate a southeastern average teacher salary, which shall be the average of the average teachers' salaries of the southeastern states.	Economic Research
97	33.2	State	Proviso	RFA shall compute a composite index to reflect the respective costs of the components of the Medicaid program expenditures in computing the maximum inflation factor to be used in long term care contractual arrangements involving reimbursement of providers. The Revenue and Fiscal Affairs Office shall update the composite index so as to have the index available for each contract renewal.	Economic Research
98	33.15	State	Proviso	RFA shall provide data to the Department of Health and Human Services for it to use to enroll and recertify eligible children for the SCHIP program.	Health and Demographics
99	33.23	State	Proviso	The Revenue and Fiscal Affairs Office shall provide DHHS with any information required by the department in order to implement this proviso in accordance with state law and regulations. The proviso requires DHHS to implement accountability and quality improvement in the following initiatives: Healthy Outcomes, Community Health Outreach, Rural Hospital DSH payment, Primary Care Safety Net, and Rural and Underserved Area Provider Capacity.	Health and Demographics

100	<u>34.39</u>	State	Proviso	RFA shall provide data needed by the South Carolina Health Integrated Data Services program to fulfill its mission of disseminating data about prevalence, treatment and cost of disease from the South Carolina Health and Human Services Data Warehouse and in particular the Medicaid System. The purpose of the program is to educate communities statewide about improving health and wellness through lifestyle changes.	Health and Demographics
101	<u>102.1</u>	State	Proviso	Revenue and Fiscal Affairs Office shall clarify county boundary determinations as directed by Section 27-2-105, of the 1976 Code and re-establish the boundary between the states of South Carolina and North Carolina.	Geodetic Survey
102	<u>102.2</u>	State	Proviso	The Revenue and Fiscal Affairs Office, in conjunction with the South Carolina Election Commission, shall merge the voter registration file with the office's Geocoded Address List and the district boundaries of the Congress, South Carolina Senate, South Carolina House of Representatives, county councils, and such other districts as the office possesses official district boundary records in electronic format. The resulting data allows county election and registration commissions ensure registered voters are properly assigned to election districts.	Digital Cartography
103	<u>102.1</u>	State	Proviso	The Revenue and Fiscal Affairs Office Executive Director and a technical advisor appointed by the Executive Director will serve on the South Carolina Boundary Commission. The purpose of the commission is to work with the North Carolina Boundary Commission to oversee and approve work reestablishing the boundary between South Carolina and North Carolina. The Executive Director of the Revenue and Fiscal Affairs Office is directed to submit a report to the Senate Finance Committee and the House Ways and Means Committee regarding the progress of reestablishing the South Carolina-North Carolina boundary within sixty days of the close of each fiscal year until such re-establishment is completed.	Geodetic Survey
104	<u>102.4</u>	State	Proviso	The Revenue and Fiscal Affairs Office shall integrate client information of state agencies and other entities to ensure that the operation of health and human services agencies may be enhanced by coordination and integration of client information. Client data from health and human services state agencies will be linked to improve client outcome measures, enabling state agencies to analyze coordination and continuity of care issues. The addition of these data will enhance existing agency systems by providing client data from other state agency programs to assist in the provision of client services.	Health and Demographics

105	<u>102.5</u>	State	Proviso	The Revenue and Fiscal Affairs Office, utilizing the funds appropriated and or authorized in the appropriation act for the E911 program, must ensure that any new plans or proposed amendments to existing plans maintain comprehensive coverage for the full Public Safety Answering Points area as well as improve cost effectiveness.	Wireless E911
106	<u>102.6</u>	State	Proviso	The respective sections of the Revenue and Fiscal Affairs Office are authorized to provide and receive from other governmental entities, including other divisions, state and local agencies and departments, and the private sector, goods and services, as will in its opinion promote efficient and economical operations. The sections may charge and pay the entities for the goods and services, the revenue from which shall be deposited in the state treasury in a special account and expended only for the costs of providing the goods and services, and such funds may be retained and be expended for the same purposes.	All
107	<u>102.7</u>	State	Proviso	The Executive Director of the Revenue and Fiscal Affairs Office shall appoint an individual with technical or operational knowledge of E-911 systems to the South Carolina 911 Advisory Committee.	Wireless E911
108	<u>102.8</u>	State	Proviso	The Revenue and Fiscal Affairs Office shall be authorized to use up to \$150,000 of the funds from the 58.2 percent compliance cost portion of the wireless 9-1-1 fund for costs associated with the further planning, development, and implementation of the comprehensive statewide NG9-1-1 system as outlined in the South Carolina NG9-1-1 strategic plan.	Wireless E911
109	<u>117.66</u>	State	Proviso	The Director of the Revenue and Fiscal Affairs Office or his designee must certify the annual Executive Budget proposed by the Governor in the same manner as the House Ways and Means and Senate Finance Committee versions of the budget bill are certified.	Budget Development

110	<u>118.3</u>	State	Proviso	The Board of Economic Advisors shall recognize all general fund revenues accumulated in a fiscal year in excess of general appropriations and supplemental appropriations as surplus funds. These revenues are credited to the Contingency Reserve Fund.	BEA
111	Title 13 U.S.C., Section 8 (b)	Federal	Statute	Authorization for the US Census Bureau to undertake joint projects with the states. Pursuant to this authority, the Revenue and Fiscal Affairs Office will collaborate with the U.S. Census Bureau on population and housing unit estimates.	Census
112	Title 15 U.S.C., Section 1525	Federal	Statute	Authorization for the US Census Bureau to undertake joint projects with the states. Pursuant to this authority, the Revenue and Fiscal Affairs Office, acting as the State Data Center, will collaborate with the U.S. Census Bureau as a premier local partner to disseminate information and data produced by the Census Bureau to state and local governments. Since the State Data Center (SDC) is an official source of Census Bureau data for South Carolina, the SDC will be provided with Census Bureau data products, technical support, and training at no cost.	Census

Agency Name: **South Carolina Revenue and Fiscal Affairs**

Agency Code: **E50** Section: **102**

Divisions or Major Programs	Description	Service/Product Provided to Customers	Customer Segments	Specify only for the following Segments: (1) Industry: Name; (2) Professional Organization: Name; (3) Public: Demographics.	Customer Template
Health and Demographics	This section is the central setting for the South Carolina Integrated Data System (IDS). Through a series of statutes and agreements, agencies and organizations entrust their data systems with H&D. The IDS enables the analysis of the use of services and crossover by individuals among these agencies and organizations, adds a new dimension to information for program management and evaluation, and allows for identification and longitudinal analysis of cohorts of interest	Services provided by Health and Demographics include basic linkages and data analysis, analytic cubes with mapping capability, custom web application development and spatial analysis.	Executive Branch/State Agencies		
Health and Demographics	This section is the central setting for the South Carolina Integrated Data System (IDS). Through a series of statutes and agreements, agencies and organizations entrust their data systems with H&D. The IDS enables the analysis of the use of services and crossover by individuals among these agencies and organizations, adds a new dimension to information for program management and evaluation, and allows for identification and longitudinal analysis of cohorts of interest	Services provided by Health and Demographics include basic linkages and data analysis, analytic cubes with mapping capability, custom web application development and spatial analysis.	Industry	<p>HEALTHCARE - Customers include, but are not limited to:</p> <ul style="list-style-type: none"> AccessHealth Spartanburg Anmed Health Children's Hospital of Philadelphia North Central Family Medical Center, Inc Georgetown Hospital System HCA Healthcare Lexington Medical Center Long's Drug McLeod Health Palmetto Health Regional Medical Center Roper St. Francis HealthCare Southern Palmetto Hospital Sisters of Charity Health System Spartanburg Regional Health Services District, Inc. Spartanburg Regional Medical Center Tenet HealthSystem Medical, Inc. Aiken Regional Medical Center Bon Secours St. Francis Health System Community Hospital Corporation Conway Medical Center Greenville Health System Health South LifePoint Hospitals McLeod Dillon Medical University of South Carolina Providence Hospital Richland Care Rural Health Services, Inc Self Regional Healthcare St. Joseph's/Chandler Health System, Inc. The Regional Medical Center 	
Health and Demographics	This section is the central setting for the South Carolina Integrated Data System (IDS). Through a series of statutes and agreements, agencies and organizations entrust their data systems with H&D. The IDS enables the analysis of the use of services and crossover by individuals among these agencies and organizations, adds a new dimension to information for program management and evaluation, and allows for identification and longitudinal analysis of cohorts of interest	Services provided by Health and Demographics include basic linkages and data analysis, analytic cubes with mapping capability, custom web application development and spatial analysis.	Professional Organization	<ul style="list-style-type: none"> American Dental Association Palmetto Medical Dental and Pharmaceutical Assoc. South Carolina Dental Hygiene Association South Carolina Hospital Association South Carolina Medical Association South Carolina Primary Health Care Association South Carolina Society for Respiratory Care 	
Health and Demographics	This section is the central setting for the South Carolina Integrated Data System (IDS). Through a series of statutes and agreements, agencies and organizations entrust their data systems with H&D. The IDS enables the analysis of the use of services and crossover by individuals among these agencies and organizations, adds a new dimension to information for program management and evaluation, and allows for identification and longitudinal analysis of cohorts of interest	Services provided by Health and Demographics include basic linkages and data analysis, analytic cubes with mapping capability, custom web application development and spatial analysis.	Industry	<p>PRIVATE COLLEGE</p> <ul style="list-style-type: none"> Presbyterian College 	

Agency Name: **South Carolina Revenue and Fiscal Affairs**

Agency Code: **ES0** Section: **102**

Fiscal Year 2016-17
Accountability Report

Divisions or Major Programs	Description	Service/Product Provided to Customers	Customer Segments	Specify only for the following segments: (1) Industry; Name; (2) Professional Organization; Name; (3) Public; Demographics.
Health and Demographics	This section is the central setting for the South Carolina Integrated Data System (IDS). Through a series of statutes and agreements, agencies and organizations entrust their data systems with H&D. The IDS enables the analysis of the use of services and crossover by individuals among these agencies and organizations, adds a new dimension to information for program management and evaluation, and allows for identification and longitudinal analysis of cohorts of interest	Services provided by Health and Demographics include basic linkages and data analysis, analytic cubes with mapping capability, custom web application development and spatial analysis.	Industry	CONSULTING / MARKETING / ACCOUNTING: Ascendent Healthcare Advisors CHS Management Company CHSPSC, LLC Dixon Hughes Goodman LLP Lexis Nexis Optum PDA, Inc. Platt HMC, Inc. Research & Planning Consultants, LP RSF Marketing Truven Health Analytics Vintage Marketing Wipfli LLP
Health and Demographics	This section is the central setting for the South Carolina Integrated Data System (IDS). Through a series of statutes and agreements, agencies and organizations entrust their data systems with H&D. The IDS enables the analysis of the use of services and crossover by individuals among these agencies and organizations, adds a new dimension to information for program management and evaluation, and allows for identification and longitudinal analysis of cohorts of interest	Services provided by Health and Demographics include basic linkages and data analysis, analytic cubes with mapping capability, custom web application development and spatial analysis.	Industry	RESEARCH: Health Sciences South Carolina Institute on Family & Neighborhood Life Social & Scientific Systems, Inc. PUBLISHING: Hayes Directories CONTINUING EDUCATION: Motivations, Inc.
Health and Demographics	This section is the central setting for the South Carolina Integrated Data System (IDS). Through a series of statutes and agreements, agencies and organizations entrust their data systems with H&D. The IDS enables the analysis of the use of services and crossover by individuals among these agencies and organizations, adds a new dimension to information for program management and evaluation, and allows for identification and longitudinal analysis of cohorts of interest	Services provided by Health and Demographics include basic linkages and data analysis, analytic cubes with mapping capability, custom web application development and spatial analysis.	Industry	MISCELLANEOUS: United Way of the Midlands Children's Trust of South Carolina SC Campaign to Prevent Teen Pregnancy
Economic Research	This section is responsible for estimates and projections of revenues and expenditures for state and local governments and coordination with the US Census Bureau	Fiscal impacts for legislation impacting state and local revenue and expenditures; Aid to Subdivisions projections; Revenue Per Pupil Report; Local Government Finance Report; Census Data	Legislative Branch	
Economic Research	This section is responsible for estimates and projections of revenues and expenditures for state and local governments and coordination with the US Census Bureau	Property tax reimbursement projections; Millage rate increase limitations	School Districts	
Economic Research	This section is responsible for estimates and projections of revenues and expenditures for state and local governments and coordination with the US Census Bureau	Property tax reimbursement projections; Millage rate increase limitations; Local sales tax revenue estimates	Local Govts.	

Customer Template

Agency Name: **South Carolina Revenue and Fiscal Affairs**

Agency Code: **E50** Section: **102**

Fiscal Year 2016-17
Accountability Report

Divisions or Major Programs	Description	Service/Product Provided to Customers	Customer Segments	Customer Template
				Specify only for the following segments: (1) Industry: Name; (2) Professional Organization: Name; (3) Public: Demographics.
Economic Research	This section is responsible for estimates and projections of revenues and expenditures for state and local governments and coordination with the US Census Bureau	Projections for EFA, SE teacher salary average, and student counts; Jobs Tax Credit county designations; Statewide millage rate estimate calculations; DHHS long-term care facility rate inflation factor	Executive Branch/State Agencies	
Economic Research	This section is responsible for estimates and projections of revenues and expenditures for state and local governments and coordination with the US Census Bureau	Coordinates with the US Census Bureau and assists researchers and the public with data retrieval; Serves as the State Data Center	General Public	Demographics of requestors not collected
Digital Cartography	Provides mapping and redistricting services to the legislature and local governments	Maps, demographic reports, and redistricting support	Legislative Branch	
Digital Cartography	Provides mapping and redistricting services to the legislature and local governments	Reports of voters possibly assigned to the incorrect election districts	Local Govts.	
Digital Cartography	Provides mapping and redistricting services to the legislature and local governments	Maps of election districts	General Public	
E911	Distribute and reimburse wireless 911 surcharges back to the local jurisdictions which assists in the funding of local 911 operations.	Wireless 911 funding	Local Govts.	
E911	Distribute and reimburse wireless 911 surcharges back to the WSPs for costs directly related to providing wireless 911 service to their customers.	Wireless 911 funding	Local Govts.	
E911	With the funding provided by our office, local jurisdictions are able to maintain and provide 911 service for their areas.	Quality 911 service	Local Govts.	
Budget Development Unit	The Budget Development Section supports the General Assembly in the development of an appropriation bill by reviewing state agency budget plans and providing analysis and reports to the Ways and Means and Senate Finance Committees.	Support the Senate Finance Committee and House Ways & Means Committee by reviewing state agency budget plans and providing analysis and reports to ensure the integrity of the appropriation bill during the annual budget process	Legislative Branch	
Budget Development Unit	The Budget Development Section supports the General Assembly in the development of an appropriation bill by reviewing state agency budget plans and providing analysis and reports to the Ways and Means and Senate Finance Committees.	Confer with and support state agencies regarding budget issues (budget priorities, cost-effectiveness, and statewide considerations regarding agency plans and funding needs) assist with development of each agency's budget	Executive Branch/State Agencies	

Agency Name: **South Carolina Revenue and Fiscal Affairs**

Agency Code: **ES0** Section: **102**

Divisions or Major Programs	Description	Service/Product Provided to Customers	Customer Segments	Specify only for the following Segments: (1) Industry: Name; (2) Professional Organization: Name; (3) Public: Demographics.
Budget Development Unit	The Budget Development Section supports the General Assembly in the development of an appropriation bill by reviewing state agency budget plans and providing analysis and reports to the Ways and Means and Senate Finance Committees.	Prepare a variety of reports (analytical and historical budget reports, summaries, and other statistical information) that support budgetary decision-making by the General Assembly	Legislative Branch	
SC Geodetic Survey	The South Carolina Geodetic Survey (SCGS) ensures the integrity of geodetic control throughout South Carolina so that land and land related items can be accurately referenced to the national horizontal and vertical coordinate system. The SCGS accomplishes this by operating a statewide Real-Time GPS Network and upgrading county geodetic networks.	Height Modernization	Professional Organization	SC Society of Professional Land Surveyors
SC Geodetic Survey	The South Carolina Geodetic Survey (SCGS) ensures the integrity of geodetic control throughout South Carolina so that land and land related items can be accurately referenced to the national horizontal and vertical coordinate system. The SCGS accomplishes this by operating a statewide Real-Time GPS Network and upgrading county geodetic networks.	Height Modernization	Local Govts.	
SC Geodetic Survey	The South Carolina Geodetic Survey (SCGS) ensures the integrity of geodetic control throughout South Carolina so that land and land related items can be accurately referenced to the national horizontal and vertical coordinate system. The SCGS accomplishes this by operating a statewide Real-Time GPS Network and upgrading county geodetic networks.	Height Modernization	Executive Branch/State Agencies	
SC Geodetic Survey	The South Carolina Geodetic Survey (SCGS) ensures the integrity of geodetic control throughout South Carolina so that land and land related items can be accurately referenced to the national horizontal and vertical coordinate system. The SCGS accomplishes this by operating a statewide Real-Time GPS Network and upgrading county geodetic networks.	Height Modernization	Industry	Photogrammetric firms

Agency Name: **South Carolina Revenue and Fiscal Affairs**

Agency Code: **E50** Section: **102**

Fiscal Year 2016-17
Accountability Report

Divisions or Major Programs	Description	Service/Product Provided to Customers	Customer Segments	Specify only for the following segments: (1) Industry: Name; (2) Professional Organization: Name; (3) Public: Demographics.
SC Geodetic Survey	The South Carolina Geodetic Survey (SCGS) ensures the integrity of geodetic control throughout South Carolina so that land and land related items can be accurately referenced to the national horizontal and vertical coordinate system. The SCGS accomplishes this by operating a statewide Real-Time GPS Network and upgrading county geodetic networks.	SC Real Time Network	Professional Organization	SC Society of Professional Land Surveyors
SC Geodetic Survey	The South Carolina Geodetic Survey (SCGS) ensures the integrity of geodetic control throughout South Carolina so that land and land related items can be accurately referenced to the national horizontal and vertical coordinate system. The SCGS accomplishes this by operating a statewide Real-Time GPS Network and upgrading county geodetic networks.	SC Real Time Network	General Public	Farming Community (precision agriculture), GIS technicians,
SC Geodetic Survey	The South Carolina Geodetic Survey (SCGS) ensures the integrity of geodetic control throughout South Carolina so that land and land related items can be accurately referenced to the national horizontal and vertical coordinate system. The SCGS accomplishes this by operating a statewide Real-Time GPS Network and upgrading county geodetic networks.	SC Real Time Network	Executive Branch/State Agencies	
SC Geodetic Survey	The South Carolina Geodetic Survey (SCGS) ensures the integrity of geodetic control throughout South Carolina so that land and land related items can be accurately referenced to the national horizontal and vertical coordinate system. The SCGS accomplishes this by operating a statewide Real-Time GPS Network and upgrading county geodetic networks.	SC Real Time Network	Local Govts.	
SC Geodetic Survey	The SCGS's county aerial orthophotography program begun in 1986 was the catalyst for creating and maintaining an accurate, up-to-date, uniform statewide mapping system on a county-by-county basis. This digitized map base is the foundation for county and state computerized land information systems that facilitate manipulating and storing land records for a multitude of purposes.	County Aerial Orthophotography program	Executive Branch/State Agencies	

Agency Name: **South Carolina Revenue and Fiscal Affairs**

Agency Code: **E50** Section: **102**

Divisions or Major Programs	Description	Service/Product Provided to Customers	Customer Segments	Specify only for the following Segments: (1) Industry; Name; (2) Professional Organization; Name; (3) Public; Demographics.
SC Geodetic Survey	The SCGS's county aerial orthophotography program begun in 1986 was the catalyst for creating and maintaining an accurate, up-to-date, uniform statewide mapping system on a county-by-county basis. This digitized map base is the foundation for county and state computerized land information systems that facilitate manipulating and storing land records for a multitude of purposes.	County Aerial Orthophotography program	Local Govts.	
SC Geodetic Survey	The SCGS's county aerial orthophotography program begun in 1986 was the catalyst for creating and maintaining an accurate, up-to-date, uniform statewide mapping system on a county-by-county basis. This digitized map base is the foundation for county and state computerized land information systems that facilitate manipulating and storing land records for a multitude of purposes.	County Aerial Orthophotography program	General Public	
SC Geodetic Survey	The SCGS's county aerial orthophotography program begun in 1986 was the catalyst for creating and maintaining an accurate, up-to-date, uniform statewide mapping system on a county-by-county basis. This digitized map base is the foundation for county and state computerized land information systems that facilitate manipulating and storing land records for a multitude of purposes.	County Aerial Orthophotography program	Industry	Photogrammetric firms
SC Geodetic Survey	The SCGS also re-establishes indeterminate political boundaries to ensure jurisdictional integrity which avoids costly litigation.	County Boundary program	Executive Branch/State Agencies	
SC Geodetic Survey	The SCGS also re-establishes indeterminate political boundaries to ensure jurisdictional integrity which avoids costly litigation.	County Boundary program	Local Govts.	
SC Geodetic Survey	The SCGS also re-establishes indeterminate political boundaries to ensure jurisdictional integrity which avoids costly litigation.	County Boundary program	School Districts	

Agency Name: **South Carolina Revenue and Fiscal Affairs**

Agency Code: **E50** Section: **102**

Fiscal Year 2016-17
Accountability Report

Customer Template

Divisions or Major Programs	Description	Service/Product Provided to Customers	Customer Segments	Specify only for the following Segments: (1) Industry: Name; (2) Professional Organization: Name; (3) Public: Demographics.
SC Geodetic Survey	The SCGS also re-establishes indeterminate political boundaries to ensure jurisdictional integrity which avoids costly litigation.	County Boundary program	Local Govts.	
SC Geodetic Survey	The SCGS also re-establishes indeterminate political boundaries to ensure jurisdictional integrity which avoids costly litigation.	County Boundary program	General Public	911, telephone,
SC Geodetic Survey	The SCGS also re-establishes indeterminate political boundaries to ensure jurisdictional integrity which avoids costly litigation.	County Boundary program	Professional Organization	SC Society of Professional Land Surveyors

Agency Name: **South Carolina Revenue and Fiscal Affairs**Fiscal Year 2016-17
Accountability ReportAgency Code: **E50** Section: **102**

Name of Partner Entity	Type of Partner Entity	Description of Partnership	Partner Template Associated Objective(s)
Department of Health and Human Services	State Government	RFA is the central setting to house the data and to link persons across multiple service providers; operates the South Carolina Integrated Data System. Data is collected per General Proviso, SC Health & Human Services Data Warehouse.	4.2.1
Department of Juvenile Justice	State Government	RFA is the central setting to house the data and to link persons across multiple service providers; operates the South Carolina Integrated Data System. Data is collected per General Proviso, SC Health & Human Services Data Warehouse.	4.2.6
State Law Enforcement Division	State Government	RFA is the central setting to house the data and to link persons across multiple service providers; operates the South Carolina Integrated Data System. Data is collected per General Proviso, SC Health & Human Services Data Warehouse.	4.2.7
Department of Probation, Pardon, and Parole	State Government	RFA is the central setting to house the data and to link persons across multiple service providers; operates the South Carolina Integrated Data System. Data is collected per General Proviso, SC Health & Human Services Data Warehouse.	4.2.8
Department of Corrections	State Government	RFA is the central setting to house the data and to link persons across multiple service providers; operates the South Carolina Integrated Data System. Data is collected per General Proviso, SC Health & Human Services Data Warehouse.	4.2.9
Department of Social Services	State Government	RFA is the central setting to house the data and to link persons across multiple service providers; operates the South Carolina Integrated Data System. Data is collected per General Proviso, SC Health & Human Services Data Warehouse. RFA serves as the statistical department (statistical analysis, reports, graphs, mapping and data linkages) for DSS and has done so under contract for over fifteen years	4.2.4
Department of Mental Health	State Government	RFA is the central setting to house the data and to link persons across multiple service providers; operates the South Carolina Integrated Data System. Data is collected per General Proviso, SC Health & Human Services Data Warehouse.	4.2.25
Department of Alcohol and Other Drug Abuse Services	State Government	RFA is the central setting to house the data and to link persons across multiple service providers; operates the South Carolina Integrated Data System. Data is collected per General Proviso, SC Health & Human Services Data Warehouse.	4.2.10

Agency Name: **South Carolina Revenue and Fiscal Affairs**

Fiscal Year 2016-17
Accountability Report

Agency Code: **E50** Section: **102**

Name of Partner Entity	Type of Partner Entity	Description of Partnership	Partner Template Associated Objective(s)
Department of Education	State Government	RFA is the central setting to house the data and to link persons across multiple service providers; operates the South Carolina Integrated Data System. Data is collected per General Proviso, SC Health & Human Services Data Warehouse.	4.2.2
South Carolina First Steps	State Government	RFA is the central setting to house the data and to link persons across multiple service providers; operates the South Carolina Integrated Data System. Data is collected per General Proviso, SC Health & Human Services Data Warehouse.	4.2.20
Department of Health and Environmental Control	State Government	RFA is the central setting to house the data and to link persons across multiple service providers; operates the South Carolina Integrated Data System. Data is collected per General Proviso, SC Health & Human Services Data Warehouse.	4.2.13
Department of Employment and Workforce	State Government	RFA is the central setting to house the data and to link persons across multiple service providers; operates the South Carolina Integrated Data System. Data is collected per General Proviso, SC Health & Human Services Data Warehouse.	4.2.14
Department of Disabilities and Special Needs	State Government	RFA is the central setting to house the data and to link persons across multiple service providers; operates the South Carolina Integrated Data System. Data is collected per General Proviso, SC Health & Human Services Data Warehouse.	4.2.15
Department of Vocational Rehabilitation	State Government	RFA is the central setting to house the data and to link persons across multiple service providers; operates the South Carolina Integrated Data System. Data is collected per General Proviso, SC Health & Human Services Data Warehouse.	4.2.12
Public Employment Benefits Authority	State Government	RFA is the central setting to house the data and to link persons across multiple service providers; operates the South Carolina Integrated Data System. Data is collected per General Proviso, SC Health & Human Services Data Warehouse.	4.2.11
All South Carolina general acute care hospitals and specialized hospitals including, but not limited to, psychiatric hospitals, alcohol and substance abuse hospitals, and rehabilitation hospitals.	Private Business Organization	RFA is the central setting to house the data and to link persons across multiple service providers; operates the South Carolina Integrated Data System. Data is collected per SC Code of Laws § 44-6-170.	4.2.18

Agency Name: **South Carolina Revenue and Fiscal Affairs**

Fiscal Year 2016-17
Accountability Report

Agency Code: **E50** Section: **102**

Partner Template

Name of Partner Entity	Type of Partner Entity	Description of Partnership	Associated Objective(s)
All South Carolina hospital-based and freestanding ambulatory surgical facilities as defined in Section 44-7-130, hospital emergency rooms licensed under Chapter 7, Article 3, and any health care setting which provides on an outpatient basis radiation therapy, cardiac catheterizations, lithotripsy, magnetic resonance imaging, and positron emission therapy.	Private Business Organization	RFA is the central setting to house the data and to link persons across multiple service providers; operates the South Carolina Integrated Data System. Data is collected per SC Code of Laws § 44-6-170.	4.2.18
Other South Carolina providers offering services with equipment requiring a Certificate of Need.	Private Business Organization	RFA is the central setting to house the data and to link persons across multiple service providers; operates the South Carolina Integrated Data System. Data is collected per SC Code of Laws § 44-6-170.	4.2.18
All South Carolina licensed home health agencies.	Private Business Organization	RFA is the central setting to house the data and to link persons across multiple service providers; operates the South Carolina Integrated Data System. Data is collected per SC Code of Laws § 44-6-170.	4.2.19
Department of Revenue	State Government	Department of Revenue provides individual income tax, sales tax, and property tax data	4.2.16
US Census Bureau	Federal Government	Revenue and Fiscal Affairs partners with the US Census Bureau for the decennial census and annual population estimates and is the central contact for Census data in the state	4.2.23
Department of Commerce	State Government	Assisting with the identification of potential businesses impacted by the October flooding	4.2.17

Agency Name: **South Carolina Revenue and Fiscal Affairs**

Agency Code: **E50** Section: **102**

Fiscal Year 2016-17
Accountability Report

			Partner Template
Name of Partner Entity	Type of Partner Entity	Description of Partnership	Associated Objective(s)
Local 911 coordinators and directors	Local Government	We work together on distribution of wireless 911 surcharges to all the local jurisdictions. Also, we work together to help provide the highest quality 911 service throughout the state of South Carolina.	4.2.24
FCC	Federal Government	Fill out a report each year concerning 911 operations and wireless 911 funding in the state of SC.	4.2.21
Staff of General Assembly	State Government	Partner with staff of state Senate and House of Representatives in the development of an appropriation bill by conferring on state agency budget plans and providing oversight of the budget process	4.2.22
State Homeless Coalition	Non-Governmental Organization	Provide descriptive indicators to State Homeless Coalition to assist them in obtaining funding	4.2.3
SCHIEX	Private Business Organization	RFA serves as the primary contractor for SCHIEX technical infrastructure	4.2.5

Agency Name	South Carolina Revenue and Fiscal Affairs	
Agency Code	E50	Section: 102

Fiscal Year 2016-17
Accountability Report

Item	Report Name	Name of Entity Requesting the Report	Type of Entity	Reporting Frequency	Submission Date (MM/DD/YYYY)	Summary of Information Requested in the Report	Method to Access the Report
1	Revenue Per Pupil	SC General Assembly	State	Annually	September 1, 2017	State, federal, and local revenue by school district and student counts	Website
2	Local Government Finance Report	SC General Assembly	State	Annually	November 1, 2017	Local revenue and expenditure data for school districts, counties, municipalities, and special purpose districts	Website
3	Long-Term Care Facility Reimbursement Rate	DHHS	State	Annually	March 1, 2018	Composite index reflecting the respective costs of the components of the Medicaid program expenditures for long term care contractual arrangements	Mail
4	Education Finance Act Inflation factor	SC Department of Education	State	Annually	September 1, 2017	Education Finance Act base student cost inflation factor	Mail
5	Southeastern average teacher salary	SC Department of Education	State	Annually	September 1, 2017	Projected Southeastern average teacher salary	Mail
6	Homestead Exemption Reimbursement Projections (Tier III) and minimum disbursement	School Districts	Local Govt.	Annually	December 31, 2017	Projected distribution of Homestead Exemption reimbursements and \$2.5 million minimum disbursement for school districts	Mail and website
7	Millage Rate Increase Limitations	Local Governments	Local Govt.	Annually	March 1, 2018	Millage rate increase limitation for counties, school districts, and municipalities	Mail and website
8	Aid to Subdivisions Distribution Projection	Local Governments	Local Govt.	Annually	January 1, 2018	Projection of Aid to Subdivisions funding by county and municipality	
9	US Census Bureau Population Estimates	US Census Bureau	Federal	Annually	September 1, 2018	Summary of state population in group quarters and vital records statistics of births and deaths	US Census Bureau Resource
10	State Data Center Annual Report	US Census Bureau	Federal	Annually	March 1, 2018	Summary of activities of the State Data Center during the calendar year	US Census Bureau Resource
11	Bonus Spreadsheet (117.55)	Department of Administration Human Resource	State	Annually	June 30, 2017	Bonuses paid out in the FY	Department of Administration Human Resource
12	Monetary Awards (117.15)	Department of Administration Human Resource	State	Annually	June 30, 2017	Allowance for Residences and Compensation Restrictions	Department of Administration Human Resource
13	Voluntary Separation Program Cost Estimate Form (117.33)	Department of Administration Human Resource	State	Annually	June 30, 2017	Payout of Employee Voluntary Separation	Department of Administration Human Resource
14	Salary Supplements Spreadsheet (93.18)	Department of Administration Human Resource	State	Annually	June 30, 2017	Compensation-Reporting of Supplemental Salaries	Department of Administration Human Resource
15	Telecommuting	Department of Administration Human Resource	State	Annually	June 30, 2017	State Employee Telecommuting Guidelines	Department of Administration Human Resource
16	Retirement Incentive Program Cost Estimate Form (S9-1-1140(H))	Department of Administration Human Resource	State	Annually	June 30, 2017	Salary and Fringe of employees participating in program	Department of Administration Human Resource
17	Furlough (S8-11-192, 8-11-193, 117.72)	Department of Administration Human Resource	State	Annually	June 30, 2017	Employees participating in furlough programs	Department of Administration Human Resource
18	Fair Market Rental Value of Residences (117.15)	Department of Administration Human Resource	State	Annually	June 30, 2017	Allowances for residences and compensation restrictions	Department of Administration Human Resource
19	OSHA Form 300 (29CFRPart 1904.12)	United State Department of Labor	Federal	Monthly	February 1, 2017	Log of Work Related Injuries and Illnesses	United State Department of Labor
20	OSHA Form 300A (29CFRPart 1904.35)	United State Department of Labor	Federal	Annually	February 1, 2017	Summary of Work Related Injuries and Illnesses	United State Department of Labor
21	Travel Report: Top 25 in state gov't (117.25)	South Carolina Comptroller General	State	Annually	October 1, 2017	Summary of top 25 travelers in state gov't	South Carolina Comptroller General
22	Year-End Financial Statements - CAFR (117.58)	South Carolina Comptroller General	State	Annually	October 1, 2017	Year-end financial report	South Carolina Comptroller General
23	Fees & Fines Report (117.74)	Senate Finance & House WM	State	Annually	September 1, 2017	Fees and fines collected by agency	Senate Finance & House WM
24	Recovery Audits (117.88)	State Fiscal Accountability Authority	State	Annually	Jan. 1 - every 3 yrs	Recovery audit to vendors for goods and services	State Fiscal Accountability Authority
25	Audit Schedule of Federal Expenditures (117.99)	South Carolina State Auditor	State	Annually	August 14, 2017	Federal program expenditures	South Carolina State Auditor
26	PSAP Quarterly Call Volume Report	Local 911 jurisdictions/PSAPs	Local Govt.	Quarterly	End of each quarter	Wireless 911 call volumes by jurisdiction and amount of money distributed to each jurisdiction	

Report Template

Agency Name: **South Carolina Revenue and Fiscal Affairs Office**

Fiscal Year 2016-17
Accountability Report

Agency Code: **E50** Section: **102**

Oversight Review Template

Item	Name of Entity Conducted Oversight Review	Type of Entity	Oversight Review Timeline (MM/DD/YYYY to MM/DD/YYYY)	Method to Access the Oversight Review Report
1	American Utility Auditors	Outside Organization	2013 and 2015	Submitted to the State Fiscal and Accountability Office
2	State Auditor	State Agency	2015	www.osa.sc.gov