

|                     |                    |                 |  |
|---------------------|--------------------|-----------------|--|
| <b>AGENCY NAME:</b> | Clemson University |                 |  |
| <b>AGENCY CODE:</b> | H12                | <b>SECTION:</b> |  |

**Fiscal Year 2016-2017  
Accountability Report**

**SUBMISSION FORM**

|                       |                                                                                                                                                                                                                                                                                                                                                                                                                                                                                                                                                                                                                                                                                                                                                                                                                                                                                                                                                                                           |
|-----------------------|-------------------------------------------------------------------------------------------------------------------------------------------------------------------------------------------------------------------------------------------------------------------------------------------------------------------------------------------------------------------------------------------------------------------------------------------------------------------------------------------------------------------------------------------------------------------------------------------------------------------------------------------------------------------------------------------------------------------------------------------------------------------------------------------------------------------------------------------------------------------------------------------------------------------------------------------------------------------------------------------|
| <b>AGENCY MISSION</b> | <p>Clemson University was established to fulfill our founder's vision of "a high seminary of learning" to develop "the material resources of the State" for the people of South Carolina. Nurtured by an abiding land grant commitment, Clemson has emerged as a research university with a global vision. Our primary purpose is educating undergraduate and graduate students to think deeply about and engage in the social, scientific, economic, and professional challenges of our times. The foundation of this mission is the generation, preservation, communication, and application of knowledge. The University also is committed to the personal growth of the individual and promotes an environment of good decision making, healthy and ethical lifestyles, and tolerance and respect for others. Our distinctive character is shaped by a legacy of service, collaboration, and fellowship forged from and renewed by the spirit of Thomas Green Clemson's covenant.</p> |
|-----------------------|-------------------------------------------------------------------------------------------------------------------------------------------------------------------------------------------------------------------------------------------------------------------------------------------------------------------------------------------------------------------------------------------------------------------------------------------------------------------------------------------------------------------------------------------------------------------------------------------------------------------------------------------------------------------------------------------------------------------------------------------------------------------------------------------------------------------------------------------------------------------------------------------------------------------------------------------------------------------------------------------|

|                      |                                                                        |
|----------------------|------------------------------------------------------------------------|
| <b>AGENCY VISION</b> | <p>Clemson will be one of the nation's top-20 public universities.</p> |
|----------------------|------------------------------------------------------------------------|

Please select yes or no if the agency has any major or minor (internal or external) recommendations that would allow the agency to operate more effectively and efficiently.

|                                           |                          |                                     |
|-------------------------------------------|--------------------------|-------------------------------------|
| <b>RESTRUCTURING<br/>RECOMMENDATIONS:</b> | <b>Yes</b>               | <b>No</b>                           |
|                                           | <input type="checkbox"/> | <input checked="" type="checkbox"/> |

Please identify your agency's preferred contacts for this year's accountability report.

|                         |                    |              |                    |
|-------------------------|--------------------|--------------|--------------------|
|                         | <i>Name</i>        | <i>Phone</i> | <i>Email</i>       |
| <b>PRIMARY CONTACT:</b> | Dr. Jeremy R. King | 864-656-4592 | jking2@clemson.edu |

|                     |                           |                 |  |
|---------------------|---------------------------|-----------------|--|
| <b>AGENCY NAME:</b> | <b>Clemson University</b> |                 |  |
| <b>AGENCY CODE:</b> | <b>H12</b>                | <b>SECTION:</b> |  |

|                           |                    |              |                     |
|---------------------------|--------------------|--------------|---------------------|
| <b>SECONDARY CONTACT:</b> | Dr. Ellen Granberg | 864-656-3812 | granber@clemson.edu |
|---------------------------|--------------------|--------------|---------------------|

I have reviewed and approved the enclosed FY 2016-2017 Accountability Report, which is complete and accurate to the extent of my knowledge.

|                                             |                                  |
|---------------------------------------------|----------------------------------|
| <b>AGENCY DIRECTOR<br/>(SIGN AND DATE):</b> |                                  |
| <b>(TYPE OR PRINT<br/>NAME):</b>            | Dr. James P. Clements, President |

|                                               |                            |
|-----------------------------------------------|----------------------------|
| <b>BOARD/CMSN. CHAIR<br/>(SIGN AND DATE):</b> |                            |
| <b>(TYPE OR PRINT<br/>NAME):</b>              | Mr. E. Smyth McKissick III |

|                     |                           |                 |  |
|---------------------|---------------------------|-----------------|--|
| <b>AGENCY NAME:</b> | <b>Clemson University</b> |                 |  |
| <b>AGENCY CODE:</b> | <b>H12</b>                | <b>SECTION:</b> |  |

**AGENCY’S DISCUSSION AND ANALYSIS**

**STATEWIDE ENTERPRISE STRATEGIC OBJECTIVES**

The University has explicitly integrated three statewide enterprise strategic objectives into its own strategic and tactical planning, its operations, and its management and assessment.

- **Education, Training and Human Development:** the University endeavors, as its primary mission, to elevate the educational preparedness of South Carolinians to lead productive and healthy lives. An important component of this is ensuring our students have pathways for success in their careers and in their communities as thought leaders.
- **Public Infrastructure and Economic Development:** the University continues to build a world-class infrastructure of knowledge, wisdom, physical, and human resources to serve South Carolina’s citizens and to promote South Carolina as globally competitive location for business, innovation, and living.
- **Healthy and Safe Families:** the University contributes to the health, development, and safety of South Carolina families in myriad ways including food security through research, educational programming, and supporting cooperative extension; developing talented personnel and research-proven programs to improve the effectiveness of PK-12 education; supporting personal and public health via research programs and educating practitioners in these fields.

**CLEMSONFORWARD: A S.M.A.R.T PLAN**

The statewide enterprise objectives above and the S.M.A.R.T. (Specific, Measurable, Attainable, and Time-bound) framework for objectives are integrated components of our *ClemsonForward* strategic plan, which has four principal parts—each of which has quantitative targets to be achieved over a 10 year time frame:

***Research: Solving REAL Problems***

- Promote a culture of discovery by raising research expectations and rewards for excellence.
- Invest in six core areas to address 21<sup>st</sup> century challenges: advanced materials; cyberinfrastructure and big data science; energy, transportation, and advanced manufacturing; health innovation; human resilience; and the sustainable environment.
- Increase sponsored program award proposals and sponsored program research expenditures.
- Increase scholarly publication and citation measurement.

***Engagement: Providing REAL Experience***

- Nurture, enhance, and expand evidence-based academic engagement.
- Build a campus-wide global engagement infrastructure.
- Enhance engagement opportunities outside the classroom.

***Academic Core: Sustaining REAL Quality***

- Revise our General Education curriculum.
- Enhance integrated interdisciplinary education through a new Grand Challenge minors program.

|                     |                           |                 |  |
|---------------------|---------------------------|-----------------|--|
| <b>AGENCY NAME:</b> | <b>Clemson University</b> |                 |  |
| <b>AGENCY CODE:</b> | <b>H12</b>                | <b>SECTION:</b> |  |

- Increase the number of high-quality, nationally-prominent graduate programs.
- Professionalize academic advising.
- Increase graduation and retention rates of undergraduate students.
- Increase doctoral degree production

***Living: Building REAL Family***

- Build a climate that attracts and retains a more diverse student body, faculty, and staff.
- Lead the nation in workplace quality of life and compensation programs that recognize and reward performance.

A public-facing dashboard showing our progress towards specific, measurable targets associated with *ClemsonForward* can be found at:  
<https://www.clemson.edu/forward/10-year-targets.html>

These measures constitute the goals in our strategic planning and monitoring component of this State Accountability Report. This website also contains an internally accessible dashboard containing additional supportive metrics related to the top-line *ClemsonForward* objectives.

**COLLEGE RESTRUCTURING**

The beginning of FY16-17 brought a restructuring of our academic colleges within the University. The College of Science (CoS) was spun-off of the former College of Engineering and Science. The behavioral science disciplines in the former College of Business and Behavioral Science combined with the health and human development disciplines in the former College of Health Education and Human Development to form the new College of Behavioral Social and Health Sciences (BSHS). The School of Education was elevated to a College of Education.

The goal of this reorganization was to leverage strengths in larger units (BSHS), exploit tighter disciplinary alignments in others (CoS), and facilitate agile and innovative operations in smaller units (CED). Achieving these goals of the reorganization is a foundation for achieving several of the S.M.A.R.T. goals of *ClemsonForward*.

**CLEMSONFORWARD SUPPORT INITIATIVES**

***Focus and Accountability:*** *ClemsonForward* continues to emphasize the continued prudent management and efficient allocation of existing resources, utilizing data-driven metrics to measure impact rather than activity.

***Strategic Revenue Growth:*** *ClemsonForward* continues to utilize enrollment management, entrepreneurial activities, fundraising priorities, operational efficiencies, and revenue allocation to support strategic S.M.A.R.T initiatives and goals.

***Academic Support Initiatives:*** During the fiscal year, multiple initiatives began to support the S.M.A.R.T. goals of *ClemsonForward*. These include: a strategic enrollment plan being developed in concert with our finance and facilities stewards; scaling up the implementation of the EAB Student Success Collaborative that provides real-time big data-based student monitoring and intercession to promote student success; developing big-data-based predictive models of student retention and graduation; identifying and diagnosing student achievement gaps; launching a data-informed hiring protocol designed to engender more diverse applicant pools for faculty positions; and preparing for the

|                     |                           |                 |  |
|---------------------|---------------------------|-----------------|--|
| <b>AGENCY NAME:</b> | <b>Clemson University</b> |                 |  |
| <b>AGENCY CODE:</b> | <b>H12</b>                | <b>SECTION:</b> |  |

roll-out of the Academic Analytics benchmarking suite and research discovery suite of utilities to enhance our scholarly productivity and its measurement.

***Building Futures:*** Building state-of-the-art facilities, renovating aging structures, and creating multi-function spaces providing a vibrant academic community are critical to the success of ClemsonForward.

Our new Core Campus project opened in Fall 2016. This 260,000 square foot mixed use facility provides approximately 700 beds, a new home for our Calhoun Honors College, shared-use seminar/meeting space for faculty and students, and administrative support services. Core Campus helps replace the 1953 Johnstone housing and Harcombe dining complexes, which cannot be renovated to meet the needs of our current students and their families.

Still undergoing construction is the Douthitt Hills residential village that is geared to the expectations of students and their families at a Top-20 national public university, while continuing to provide a home to students who dwell, study, play, rest and make lifelong friends in a protective campus environment. The roughly 800-bed capacity also includes space for staff and residential advisors.

In spring 2017, we received approval from the State Fiscal Accountability Authority to finalize planning and execution of the construction of an \$87 million, 170,000 square foot home for the University’s College of Business that will be funded via private gifts, institutional bonds, and state appropriations. The start-of-the-art building is designed for 21<sup>st</sup> century learning, and will provide critically needed space for a growing segment of our undergraduate population.

**UNIVERSITY FUNDRAISING**

Private gifts to Clemson University totaled an unprecedented \$151.3 million this fiscal year, and included \$100.1 million in cash gifts, pledges and gifts-in-kind, and \$11.5 million in planned gifts. Our second-annual Give Day contributed more than \$2 million from 3,265 donors. These gifts make it possible for Clemson to provide the student support, academic resources, and facilities that are commensurate with its standing as one of the finest public universities in the country. This was also the sixth consecutive year that annual fundraising has exceeded \$100 million.

More than 24,000 alumni supported the University with annual gifts—a 23.2% participation rate that is one of the highest in the nation. The level of gifts (which include 13 one-time gifts exceeding \$1 million) and the participation rate reflect the loyalty and dedication of our former Clemson students, the efforts of our University leadership and development staff, and the confidence of numerous external partners (including 3057 corporations and 685 faculty/staff) in the University and its direction. Particularly notable is that the FY16-17 fundraising level represents an increase in philanthropy one year following the close of our Will to Lead capital campaign.

The use of these gifts includes 66 new endowments, 97 new scholarships and fellowships, and 3 new faculty support funds.

**ATHLETICS:**

Clemson Athletics enjoyed a tremendously successful year in 2016-17. IPTAY, the fundraising organization for Clemson Athletics, announced an all-time high contribution record of \$60 million to

|                     |                           |                 |  |
|---------------------|---------------------------|-----------------|--|
| <b>AGENCY NAME:</b> | <b>Clemson University</b> |                 |  |
| <b>AGENCY CODE:</b> | <b>H12</b>                | <b>SECTION:</b> |  |

support athletic scholarships, academic support services, and facility initiatives. These gifts enable us to provide crucial support to our 500-plus student athletes.

Our football team capped an amazing 14-1 season by winning the National Championship. The men’s soccer team advanced to the Elite 8 of the NCAA tournament, while the women’s team advanced to the Sweet 16. The men’s golf team entered the NCAA National Tournament, while the women’s team went on to earn its fifth berth in the NCAA national tournament—making Clemson one of only four schools who had both men’s and women’s golf teams advance to the NCAA National Tournament and hosted an NCAA baseball regional game.

**RISK ASSESSMENT AND MITIGATION STRATEGIES**

The potential most negative impact on the public as a result of a failure in accomplishing our mission is the risk of socioeconomic retrenchment. Such negative impacts would arise from diminishment of the quality and quantity of workforce development for key state enterprises; reduction in the pool of qualified human resources and knowledge discovery that support critical needs such as health and education; impairment of research that is required for thriving advanced manufacturing, health, financial, and agricultural enterprises; reduction in the effectiveness of good government that comes from an educated public; hindrance of efforts to close educational gaps between populations undergoing demographic changes; and erosion of the cultural resources and climate that support South Carolinians’ important community, personal, and spiritual relationships.

Clemson works diligently and collaboratively with myriad outside entities to mitigate such risks. Examples of these efforts include:

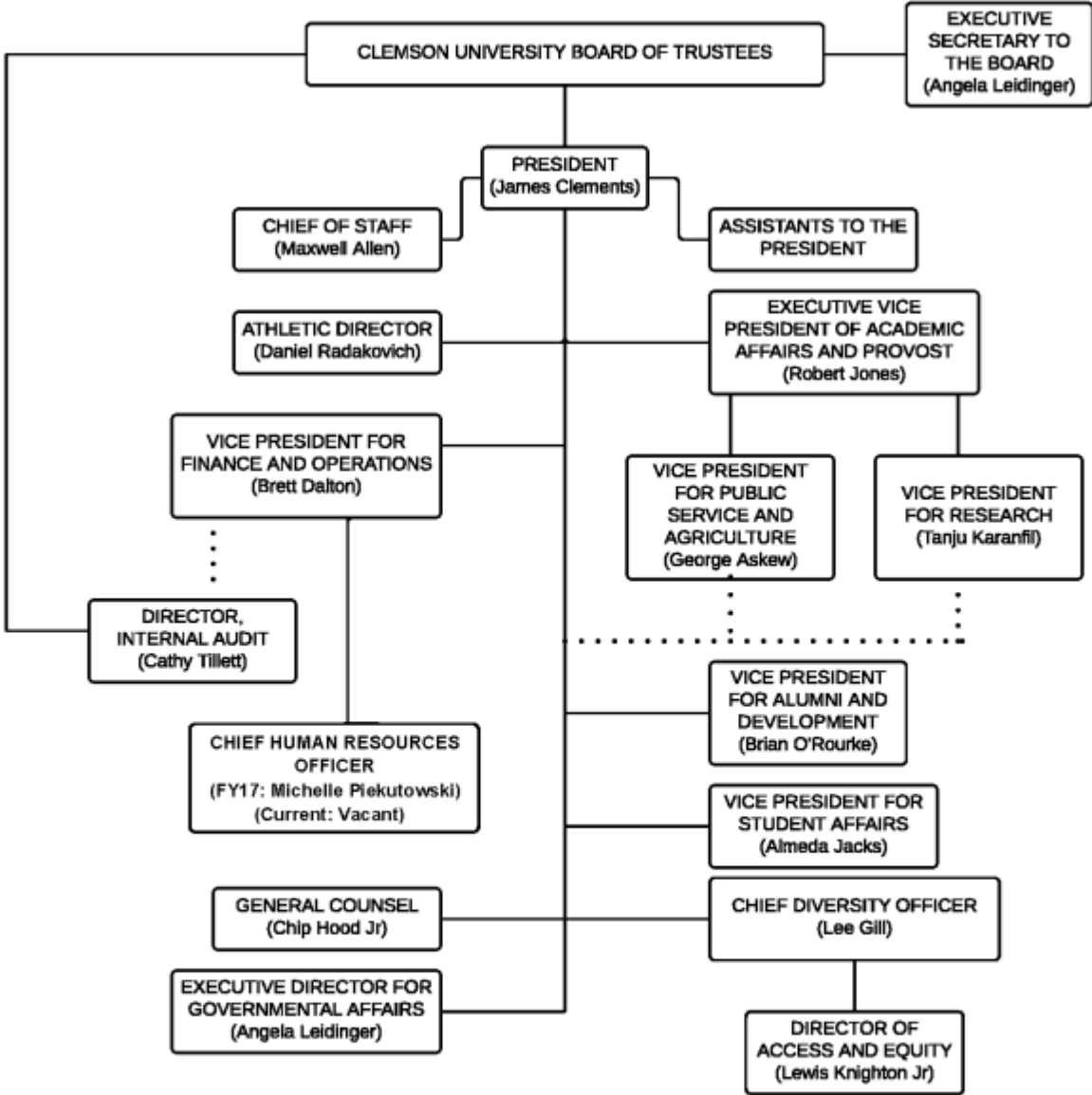
- 1) Compliance with the standards of our accrediting body, SACSCOC.
- 2) Collaboration and compliance with professional academic bodies to maintain program-specific accreditation of numerous academic programs at the University.
- 3) Engagement with administrative peer groups at other universities. For example, we have relationships and visiting exchanges with administrative teams and personnel at Oregon State University, Boise State University, and Virginia Tech to learn about how they meet challenges such as enrollment increases and resource constraints, strategic program prioritization, internal funding structures, and institutional data analytics.
- 4) Transparent dealings with private-sector credit rating agencies who conduct independent business and financial reviews to reach their independent conclusions regarding our creditworthiness.
- 5) Nurturing authentic relationships with corporations, private foundations, and individuals to understand their needs, establish mutually beneficial programmatic initiatives, and engender private financial support.
- 6) Securing select private-sector data services to ensure that we have data resources with which to reach conscious, evidence-based decisions regarding our academic programs, scholarly production, operations, and student welfare.
- 7) Clemson’s President, James P. Clements, continued visible service leadership roles in higher educational organizations and professional societies. These efforts provide rapid access to timely developments in higher education, rapid acquisition of knowledge concerning social, economic, demographic, and political trends and influences affecting higher education, and the opportunity to shape policy to strengthen public universities like Clemson.

|                     |                           |                 |  |
|---------------------|---------------------------|-----------------|--|
| <b>AGENCY NAME:</b> | <b>Clemson University</b> |                 |  |
| <b>AGENCY CODE:</b> | <b>H12</b>                | <b>SECTION:</b> |  |

Supportive actions by the State that would mitigate the risk of the potential most negative impact would be those that provide flexibility and innovation space to Clemson for the benefit of its students, their families, and South Carolinians. Examples of these might include:

- 1) Eliminating or loosening State-imposed percentage-of-tuition-based caps on institutional scholarship aid—particularly need-based aid.
- 2) Employing a ramped or stepped reduction in student-directed State scholarship aid rather than a sharp cutoff when falling below GPA thresholds, and/or restorative scholarship payments when GPA thresholds are re-attained.
- 3) When standardized tests change (as the SAT did in spring of 2016), large and significant score scale shifts can result; unrecognized, these mathematical discontinuities can distort the State’s intent in utilizing hard-wired quantitative thresholds. Removing specifically enumerated SAT scores from statutes/rules, and instead pegging them to statistical moments of national or state distributions would mitigate such effects.
- 4) The University, its students, their families, and the State benefit greatly from direct State appropriations and State scholarship funds provided to students. As Clemson works to help the State not only address current challenges, but also prepare it to meet future ones yet to reveal themselves, we do so on a competitive landscape. Inasmuch as our current private endowment is modest compared to our public university competitors, securing State funding per student FTE that is at the median level of our competitive peers is important while we develop greater and more diverse sources of long-term private support.

**ORGANIZATIONAL CHART**



**Board of Trustees members:** E. Smyth McKissick III (Chairman), John N. (Nicky) McCarter Jr. (Vice Chair, David E. Dukes, Ronald (Ronnie) D. Lee, Louis B. Lynn, Patricia (Patti) H. McAbee, Robert (Bob) L. Peeler, Cheri M. Phyfer, Mark S. Richardson, William (Bill) C. Smith Jr., Joseph (Joe) D. Swann, Kim Wilkerson, David H. Wilkins



Agency Name: **Clemson University**

Fiscal Year 2017-2018  
Accountability Report

Agency Code: **H12**

Section:

**14**

Strategic Planning Template

| Type     | Goal     | Item #<br>Strat | Object       | Associated Enterprise Objective                       | Description                                                                                                                |
|----------|----------|-----------------|--------------|-------------------------------------------------------|----------------------------------------------------------------------------------------------------------------------------|
| <b>G</b> | <b>1</b> |                 |              | <b>Education, Training, and Human Development</b>     | <b>High-Throughput Production of College Graduates</b>                                                                     |
| <b>S</b> |          | <b>1.1</b>      |              |                                                       | <b>Enhance Freshman-to-Sophomore Retention</b>                                                                             |
| <i>O</i> |          |                 | <i>1.1.1</i> |                                                       | <i>U.S. News &amp; World Report Top 10 public university retention rate by 2026</i>                                        |
| <b>S</b> |          | <b>1.2</b>      |              |                                                       | <b>Enhance Graduation Rate</b>                                                                                             |
| <i>O</i> |          |                 | <i>1.2.1</i> |                                                       | <i>U.S. News &amp; World Report Top 10 public university 6-yr graduation rate by 2026</i>                                  |
| <i>O</i> |          |                 | <i>1.2.2</i> |                                                       | <i>U.S. News &amp; World Report Top 10 public university 4-yr graduation rate by 2026</i>                                  |
| <b>S</b> |          | <b>1.3</b>      |              |                                                       | <b>Enhanced production of post-baccalaureate graduates</b>                                                                 |
| <i>O</i> |          |                 | <i>1.3.1</i> |                                                       | <i>Increase graduating doctoral students by 50% over 2015 levels by 2026</i>                                               |
| <b>G</b> | <b>2</b> |                 |              | <b>Public Infrastructure and Economic Development</b> | <b>Execution of Competitive, Externally-Funded Research and Scholarship</b>                                                |
| <b>S</b> |          | <b>2.1</b>      |              |                                                       | <b>Enhanced Sponsored Research Funding</b>                                                                                 |
| <i>O</i> |          |                 | <i>2.1.1</i> |                                                       | <i>Funding requests at a \$1B annual level by 2026</i>                                                                     |
| <i>O</i> |          |                 | <i>2.1.2</i> |                                                       | <i>Sponsored program research expenditures of \$100M annually by 2026</i>                                                  |
| <b>S</b> |          | <b>2.2</b>      |              |                                                       | <b>Enhanced scholarly productivity</b>                                                                                     |
| <i>O</i> |          |                 | <i>2.2.1</i> |                                                       | <i>Number of journal articles per faculty member increased 50% over 2015 levels by 2026</i>                                |
| <i>O</i> |          |                 | <i>2.2.2</i> |                                                       | <i>Number of conference proceeding contributions per faculty member increased by 50% over 2015 levels by 2026</i>          |
| <i>O</i> |          |                 | <i>2.2.3</i> |                                                       | <i>Number of monographs per faculty member increased by 50% over 2015 levels by 2026</i>                                   |
| <b>G</b> | <b>3</b> |                 |              | <b>Public Infrastructure and Economic Development</b> | <b>Enhanced Equity of Opportunity and Inclusive Excellence</b>                                                             |
| <b>S</b> |          | <b>3.1</b>      |              |                                                       | <b>An undergraduate body that is more diverse</b>                                                                          |
| <i>O</i> |          |                 | <i>3.1.1</i> |                                                       | <i>Undergraduate student body that is 15% underrepresented minorities by 2026</i>                                          |
| <i>O</i> |          |                 | <i>3.1.2</i> |                                                       | <i>Undergraduate student body that is 25% non-majority by 2026</i>                                                         |
| <b>S</b> |          | <b>3.2</b>      |              |                                                       | <b>A University workforce that is more diverse and reflective of aspirational goals associated with our undergraduates</b> |
| <i>O</i> |          |                 | <i>3.2.1</i> |                                                       | <i>Doubling the number of underrepresented minority instructional faculty over 2015 levels by 2026</i>                     |
| <i>O</i> |          |                 | <i>3.2.2</i> |                                                       | <i>Graduate student body that is 15% underrepresented minorities by 2026</i>                                               |

Agency Name: **Clemson University**

Fiscal Year 2016-2017  
Accountability Report

Agency Code: **H12** Section: **014**

Performance Measurement Template

| Item | Performance Measure                                                                            | Last Value | Current Target Value | Current Value | Future Target Value | Time Applicable                                        | Data Source and Availability                                                                                                                                          | Calculation Method                                                                                                                                                                                                                                                                                               | Associated Objective(s) | Meaningful Use of Measure                                                                                                                                                                           |
|------|------------------------------------------------------------------------------------------------|------------|----------------------|---------------|---------------------|--------------------------------------------------------|-----------------------------------------------------------------------------------------------------------------------------------------------------------------------|------------------------------------------------------------------------------------------------------------------------------------------------------------------------------------------------------------------------------------------------------------------------------------------------------------------|-------------------------|-----------------------------------------------------------------------------------------------------------------------------------------------------------------------------------------------------|
| 1    | U.S. News & World Report Top 10 public university freshmen-to-sophomore retention rate by 2026 | 92.9%      | 92.7%                | 92.60%        | 92.90%              | October data freeze for preceding academic year        | University-level retention data, which comes from our student data warehouse, is updated yearly                                                                       | Federal government's National Center for Education Statistics IPEDS system-defined methodology. See p. 30 of the IPEDS Keyholder Handbook 2016-2017.                                                                                                                                                             | 1.1.1                   | Promotes undergraduate student success and support                                                                                                                                                  |
| 2    | U.S. News & World Report Top 10 public university 6-yr graduation rate by 2026                 | 80.9%      | 81.0%                | 81.10%        | 81.50%              | October data freeze for preceding academic year        | Graduation data, which comes from our student data warehouse, is updated 3 times per year                                                                             | Federal government's National Center for Education Statistics IPEDS system-defined methodology. See p. 34 of the IPEDS Keyholder Handbook 2016-2017.                                                                                                                                                             | 1.2.1                   | Promotes undergraduate student success and support, and supports State goals for educated workforce development                                                                                     |
| 3    | U.S. News & World Report Top 10 public university 4-yr graduation rate by 2026                 | 59.3%      | 59.7%                | 59.40%        | 60.40%              | October data freeze for preceding academic year        | Graduation data, which comes from our student data warehouse, is updated 3 times per year                                                                             | Federal government's National Center for Education Statistics IPEDS system-defined methodology. See p. 34 of the IPEDS Keyholder Handbook 2016-2017.                                                                                                                                                             | 1.2.2                   | Promotes undergraduate student success and support, and supports State goals for educated workforce development                                                                                     |
| 4    | Increase graduating doctoral students by 50% over 2015 levels by 2026                          | 242        | 252                  | 230           | 262                 | October data freeze for preceding academic year        | Graduation data, which comes from our student data warehouse, is updated 3 times per year                                                                             | Simple count of doctoral graduates over a full academic year                                                                                                                                                                                                                                                     | 1.3.1                   | Promotes advanced student success and support, agency's commitment to fundamental and applied scholarship for the benefit of the State, and supports State goals for educated workforce development |
| 5    | Increase sponsored funding requests to \$1B annually by 2026                                   | \$513M     | \$528M               | \$561M        | \$583M              | End of fiscal year (June 30)                           | University's Office of Sponsored Programs data on submitted sponsored program proposals; data updated continuously                                                    | Sum of Clemson portion of submitted sponsored program funding proposals                                                                                                                                                                                                                                          | 2.1.1                   | Promotes advanced student success and support, agency's commitment to fundamental and applied scholarship for the benefit of the State, and supports State goals for educated workforce development |
| 6    | Externally sponsored program research expenditures of \$100M annually by 2026                  | \$79M      | \$73M                | \$89M         | \$76M               | End of fiscal year (June 30)                           | University's Office of Sponsored Programs data on expenditures from sponsored program award accounting chart strings; data updated continuously                       | Sum of Clemson portion of expenditures from sponsored program award accounting chart strings                                                                                                                                                                                                                     | 2.1.2                   | Promotes advanced student success and support, agency's commitment to fundamental and applied scholarship for the benefit of the State, and supports State goals for educated workforce development |
| 7    | Trailing 4-year total of scholarly articles per faculty member.                                | 6.5        | 6.6                  | 6.8           | 6.8                 | Oct-Nov data release with preceding calendar year data | Proprietary data from Academic Analytics™ calendar year database, with aggregation with a 1-2 year lag; new data sets released yearly, but updated on a rolling basis | 4-year trailing sum of articles authored by Clemson faculty researchers (jointly identified by the University and Academic Analytics™) having Digital Object Identifiers that are scraped by proprietary Academic Analytics™ data capture divided by the count of faculty researchers                            | 2.2.1                   | Promotes and supports dissemination of formalized foundational and applied scholarship, outreach, and public service beyond the agency.                                                             |
| 8    | Trailing 4-year total of scholarly conference proceedings contributions per faculty member     | 1.66       | 1.6                  | 1.62          | 1.6                 | Oct-Nov data release with preceding calendar year data | Proprietary data from Academic Analytics™ calendar year database, with aggregation with a 1-2 year lag; new data sets released yearly, but updated on a rolling basis | 4-year trailing sum of articles conference proceeding contributions by Clemson faculty researchers (jointly identified by the University and Academic Analytics™) having Digital Object Identifiers that are scraped by proprietary Academic Analytics™ data capture divided by the count of faculty researchers | 2.2.2                   | Promotes and supports dissemination of formalized foundational and applied scholarship, outreach, and public service beyond the agency.                                                             |
| 9    | Trailing 4-year total of scholarly monographs per faculty member                               | 0.37       | 0.34                 | 0.38          | 0.34                | Oct-Nov data release with preceding calendar year data | Proprietary data from Academic Analytics™ calendar year database, with aggregation with a 1-2 year lag; new data sets released yearly, but updated on a rolling basis | 10-year trailing sum of books authored by Clemson faculty researchers (jointly identified by the University and Academic Analytics™) that are scraped from a variety of sources by proprietary Academic Analytics™ data capture divided by the count of faculty researchers                                      | 2.2.3                   | Promotes and supports dissemination of formalized foundational and applied scholarship, outreach, and public service beyond the agency.                                                             |

|    |                                                                      |       |       |        |        |                                                 |                                                                                                                     |                                                                                                                                                |       |                                                         |
|----|----------------------------------------------------------------------|-------|-------|--------|--------|-------------------------------------------------|---------------------------------------------------------------------------------------------------------------------|------------------------------------------------------------------------------------------------------------------------------------------------|-------|---------------------------------------------------------|
| 10 | Undergraduate student body underrepresented minority fraction        | 11.5% | 12.8% | 12.20% | 13.00% | October data freeze for preceding academic year | Self-identified race/ethnicity data from Clemson's student data warehouse, which is updated as new students enroll. | Percentage of undergraduates, by headcount, self-identifying as Hispanic, Native American, African-American, Pacific Islander, or 2+ races.    | 3.1.1 | Supports State goals for educated workforce development |
| 11 | Undergraduate student body non-majority fraction                     | 16.9% | 17.4% | 17.10% | 18.00% | October data freeze for preceding academic year | Self-identified race/ethnicity data from Clemson's student data warehouse, which is updated as new students enroll. | Percentage of undergraduates, by headcount, not self-identifying as white.                                                                     | 3.1.2 | Supports State goals for educated workforce development |
| 12 | Number of instructional faculty that are underrepresented minorities | 91    | 99    | 97     | 108    | October 1 data freeze                           | Self-identified race/ethnicity data from the University's HR data system, which is updated as faculty onboard.      | Count of instructional faculty self-identifying as Hispanic, Native American, African-American, and Pacific Islander.                          | 3.2.1 | Supports State goals for educated workforce development |
| 13 | Graduate student body underrepresented minority fraction             | 8.30% | 9.60% | 9.20%  | 10.20% | October data freeze for preceding academic year | Self-identified race/ethnicity data from Clemson's student data warehouse, which is updated as new students enroll. | Percentage of graduate students, by headcount, self-identifying as Hispanic, Native American, African-American, Pacific Islander, or 2+ races. | 3.2.2 | Supports State goals for educated workforce development |

Agency Name: **Clemson University**

Fiscal Year 2016-2017  
Accountability Report

Agency Code: **H12** Section: **014**

Program Template

| Program/Title                                              | Purpose                                                                                                                                                                                                                                                                                                                                                                                                                                                                                                                                                                                                                                                                                                                                                                                                                                                                                          | FY 2016-17 Expenditures (Actual) |                |               |                | FY 2017-18 Expenditures (Projected) |                |                |                | Associated Objective(s)                                                            |
|------------------------------------------------------------|--------------------------------------------------------------------------------------------------------------------------------------------------------------------------------------------------------------------------------------------------------------------------------------------------------------------------------------------------------------------------------------------------------------------------------------------------------------------------------------------------------------------------------------------------------------------------------------------------------------------------------------------------------------------------------------------------------------------------------------------------------------------------------------------------------------------------------------------------------------------------------------------------|----------------------------------|----------------|---------------|----------------|-------------------------------------|----------------|----------------|----------------|------------------------------------------------------------------------------------|
|                                                            |                                                                                                                                                                                                                                                                                                                                                                                                                                                                                                                                                                                                                                                                                                                                                                                                                                                                                                  | General                          | Other          | Federal       | TOTAL          | General                             | Other          | Federal        | TOTAL          |                                                                                    |
| I. Education and General I.A. Unrestricted                 | The Instruction activity at the University prepares both undergraduate and graduate students with the knowledge and skills that they need to complete their degrees and prepared for life long learning. Clemson established under 59-119-10 et.seq. of S.C. Code of Laws. The Research activity of the University provides opportunity for the faculty and students to maintain and enhance their scholarship, to advance new knowledge and to create economic development. Public Service is a component of faculty activities and includes lectures, concerts, conferences, special programming and other activities in which the student, faculty and staff are available to the citizens of the state. The University is committed to sharing new knowledge to the citizens of South Carolina. The faculty, staff and students engage in community service and service learning activities. | \$ 62,003,279                    | \$ 303,061,869 | \$ -          | \$ 365,065,148 | \$ 62,069,808                       | \$ 374,468,398 | \$ -           | \$ 436,538,206 | 1.1.1, 1.2.1, 1.2.2, 1.3.1, 2.1.1, 2.1.2, 2.2.1, 2.2.2, 2.2.3, 3.1.1, 3.1.2, 3.2.1 |
|                                                            |                                                                                                                                                                                                                                                                                                                                                                                                                                                                                                                                                                                                                                                                                                                                                                                                                                                                                                  |                                  |                |               | \$ -           |                                     |                |                | \$ -           |                                                                                    |
| I. Education and General I.B. Restricted                   | Sponsored Research refers to public and private funding support of faculty research. These activities are an essential component of a research university and provide a foundation for economic development, creation of new knowledge and application of research findings. Graduate student support is essential component of sponsored research.                                                                                                                                                                                                                                                                                                                                                                                                                                                                                                                                              | \$ -                             | \$ 191,758,148 | \$ 69,951,121 | \$ 261,709,269 | \$ -                                | \$ 135,161,074 | \$ 102,010,478 | \$ 237,171,552 | 2.1.1, 2.1.2, 2.2.1, 2.2.2, 2.2.3, 3.2.2                                           |
|                                                            |                                                                                                                                                                                                                                                                                                                                                                                                                                                                                                                                                                                                                                                                                                                                                                                                                                                                                                  |                                  |                |               | \$ -           |                                     |                |                | \$ -           |                                                                                    |
| II. Auxiliary Enterprises II.A. Unrestricted               | Housing operations provides for the on-campus living environments for students. Other auxiliaries include bookstore, food services, intercollegiate athletics, telecommunications, contract computing services, student health center, parking services, and other activities.                                                                                                                                                                                                                                                                                                                                                                                                                                                                                                                                                                                                                   | \$ -                             | \$ 160,113,941 | \$ -          | \$ 160,113,941 | \$ -                                | \$ 198,143,782 | \$ -           | \$ 198,143,782 | 1.1.1, 1.2.1, 1.2.2, 1.3.1, 3.1.1, 3.1.2, 3.2.2                                    |
|                                                            |                                                                                                                                                                                                                                                                                                                                                                                                                                                                                                                                                                                                                                                                                                                                                                                                                                                                                                  |                                  |                |               |                |                                     |                |                |                |                                                                                    |
| III. Employee Benefits III.C. State Employer Contributions | Contributions required by the State to provide employee benefits.                                                                                                                                                                                                                                                                                                                                                                                                                                                                                                                                                                                                                                                                                                                                                                                                                                | \$ 18,059,787                    | \$ 70,817,972  | \$ 6,096,186  | \$ 94,973,946  | \$ 20,365,263                       | \$ 93,631,550  | \$ 5,899,002   | \$ 119,895,815 | 1.3.1, 2.1.1, 2.1.2, 2.2.1, 2.2.2, 2.2.3, 3.2.1                                    |
|                                                            |                                                                                                                                                                                                                                                                                                                                                                                                                                                                                                                                                                                                                                                                                                                                                                                                                                                                                                  |                                  |                |               |                |                                     |                |                |                |                                                                                    |
| <b>GRAND TOTAL</b>                                         |                                                                                                                                                                                                                                                                                                                                                                                                                                                                                                                                                                                                                                                                                                                                                                                                                                                                                                  | \$ 80,063,066                    | \$ 725,751,930 | \$ 76,047,307 | \$ 881,862,304 | \$ 82,435,071                       | \$ 801,404,804 | \$ 107,909,480 | \$ 991,749,355 |                                                                                    |

**NOTES**

\*FY 2016-17 figures are preliminary. Clemson University has not finalized the FY 2016-17 Comprehensive Annual Financial Report.

\*FY 2016-17 Actual Expenditures include the change to the Net Pension Liability required by GASB 68.

Agency Name: **Clemson University**

Fiscal Year 2016-2017  
Accountability Report

Agency Code: **H12** Section: **014**

Legal Standards Template

| Item # | Law Number         | Jurisdiction | Type of Law | Statutory Requirement and/or Authority Granted                                                                                                                                                                                                                                                                                                    | Does this law specify who (customer) the agency must or may serve? (Y/N) | Does the law specify a deliverable (product or service) the agency must or may provide? (Y/N) |
|--------|--------------------|--------------|-------------|---------------------------------------------------------------------------------------------------------------------------------------------------------------------------------------------------------------------------------------------------------------------------------------------------------------------------------------------------|--------------------------------------------------------------------------|-----------------------------------------------------------------------------------------------|
| 1      | 59-119-10 et seq.  | State        | Statute     | Provides that Clemson University is a public institution of higher education in South Carolina, formed to establish and maintain an agricultural and mechanical college in accordance with the terms of Thomas G. Clemson's last will and testament. This includes the management of land resources and related properties.                       | Yes                                                                      | Yes                                                                                           |
| 2      | 59-119-710 et seq. | State        | Statute     | Provides that Clemson University shall have the authority to incur debt, acquire, construct, renovate and equip auxiliary facilities in support of the educational environment at Clemson and to support and benefit the present and potential students at Clemson University.                                                                    | No                                                                       | No                                                                                            |
| 3      | 59-119-50          | State        | Statute     | Clemson University Board of Trustees shall elect a president of the university, as well as declaring professorship, setting forth professors duties and salaries. Furthermore, it shall employ such staff persons to carry out the functions of the University, its farms, grounds, shops, etc., and fix their compensation and salaries as well. | No                                                                       | Yes                                                                                           |

**Note:** We have only listed laws that provide enabling authority for the University as it relates to funded items in the 2016-17 appropriations bill, and can provide additional information if needed.

Agency Name:

Clemson University

Fiscal Year 2016-2017

Accountability Report

Agency Code:

H12

Section:

14

Customer Template

| Divisions or Major Programs                                                                       | Description                                                                                                                                                                                                                                                                                                                                                                                                                                                                                                                                                             | Service/Product Provided to Customers                                                                                                                                                                                 | Customer Segments               | <i>Specify only for the following Segments: (1) Industry; Name; (2) Professional Organization; Name; (3) Public; Demographics.</i> |
|---------------------------------------------------------------------------------------------------|-------------------------------------------------------------------------------------------------------------------------------------------------------------------------------------------------------------------------------------------------------------------------------------------------------------------------------------------------------------------------------------------------------------------------------------------------------------------------------------------------------------------------------------------------------------------------|-----------------------------------------------------------------------------------------------------------------------------------------------------------------------------------------------------------------------|---------------------------------|------------------------------------------------------------------------------------------------------------------------------------|
| Clemson Computing and Information Technology                                                      | Medicaid IT Services in CCIT provides operational support for the Medicaid Eligibility Determination System (MEDS) and the Medicaid Management Information System (MMIS) with the Department of Health and Human Services (DHHS) in South Carolina.                                                                                                                                                                                                                                                                                                                     | Services include application development and maintenance, quality assurance, project management, and business application support functions.                                                                          | Executive Branch/State Agencies |                                                                                                                                    |
| Office of Sponsored Programs, Academic Colleges, Centers & Institutes, Individual Faculty Members | Clemson University receives pass-through funding via grants and contracts with numerous federal departments and agencies including USDA, the Department of Commerce, DoD, the Department of the Interior, the Department of Justice, the Department of Labor, the Department of State, the Department of Transportation, the Appalachian Regional Commission, NASA, the Institute of Museum & Library Services, NSF, VA, EPA, NRC, the Department of Energy, the Department of Education, the Vietnam Education Foundation, HHS, Homeland Security, USAID, and the CIA. | Services include research and other contracted provisions in response to agency or department need.                                                                                                                   |                                 | Various federal agencies                                                                                                           |
| ROTC Programs                                                                                     | Clemson University's Army and Air Force ROTC programs                                                                                                                                                                                                                                                                                                                                                                                                                                                                                                                   | Development of military leadership personnel to fulfill officer positions in the U.S. Armed Forces.                                                                                                                   |                                 | U.S. Armed Forces                                                                                                                  |
| Student Veteran Resource Center, Student Affairs, Redfern Health Center                           | Clemson University and its Student Veteran Resource Center provides an accessible and convenient space for veterans to access resources and interact with fellow veterans                                                                                                                                                                                                                                                                                                                                                                                               | Services include career services and professional development, disability services, GreenZone Training, veteran orientation, health services, a veteran-dedicated newsletter, tutoring, and a veterans writing group. | General Public                  | Students that are veterans                                                                                                         |

|                               |                                                                                                                                                                                                                                         |                                                                                                                                                                                                                                                                                                                                                                                                                                                                                                                                                                                                                                                                                                                                                     |                  |                                                                                                                                                   |
|-------------------------------|-----------------------------------------------------------------------------------------------------------------------------------------------------------------------------------------------------------------------------------------|-----------------------------------------------------------------------------------------------------------------------------------------------------------------------------------------------------------------------------------------------------------------------------------------------------------------------------------------------------------------------------------------------------------------------------------------------------------------------------------------------------------------------------------------------------------------------------------------------------------------------------------------------------------------------------------------------------------------------------------------------------|------------------|---------------------------------------------------------------------------------------------------------------------------------------------------|
| College of Education          | Clemson University College of Education's numerous academic programs (undergraduate and graduate) and additional add-on licensure and in-service coursework                                                                             | Our academic programs lead to teaching licensure in early childhood, elementary, special, and agricultural education, and secondary English, mathematics, science and social studies. Our Master's and specialist degrees produce human resources for schools in the areas of clinical mental health, school counseling, and administration/supervision that lead to licensure. Other Master's degrees fulfill workforce needs in athletic leadership, student affairs, and human resource development. Additional coursework counts toward state granted add-on licensure for teachers in areas such as ESOL and early childhood, as well as in-service teacher coursework and professional development through programs such as Reading Recovery. | School Districts |                                                                                                                                                   |
| Academic Affairs              | Our academic colleges and their associated academic programs, faculty, and staff provide education, degrees, certifications, and other products and services for the benefit of our students and their parents/families.                | Educational opportunities, degrees, certifications, workforce development, cultural offerings, basic and applied research and derivative products/services                                                                                                                                                                                                                                                                                                                                                                                                                                                                                                                                                                                          | General Public   | Enrolled students and auditing students, and their parents and families--these encompass all demographic groups and their associated full ranges. |
| Academic Affairs              | Our academic colleges and their associated academic programs, faculty, and staff provide education, degrees, certifications, and other products and services for the benefit of national and state industries.                          | Educational programs, degrees, certifications, workforce and professional development, basic and applied research and derivative products/services.                                                                                                                                                                                                                                                                                                                                                                                                                                                                                                                                                                                                 | Industry         | Myriad diverse industries                                                                                                                         |
| Athletics                     | Our athletic programs enrich the educational experience of our student body, and create important ties with South Carolinians                                                                                                           | Competitive collegiate athletic programs devoted to quality, compliance, integrity, representing the citizens of SC, and the personal and educational development of student-athletes.                                                                                                                                                                                                                                                                                                                                                                                                                                                                                                                                                              | General Public   | Enrolled students and auditing students, and their parents and families--these encompass all demographic groups and their associated full ranges. |
| Cooperative Education Program | Clemson's Cooperative Education Program partners with various entities of various natures to provide our undergraduate students with mentored work experience in their chosen field while benefiting the organizations where they work. | Educated, engaged, enthusiastic students in the role of temporary workers. Opportunity for customer entities to market, evaluate, and recruit long-term workforce.                                                                                                                                                                                                                                                                                                                                                                                                                                                                                                                                                                                  | Industry         | Various public and private industries/organization, both profit and non-profit                                                                    |

**Agency Name:** **Clemson University**

Fiscal Year 2016-2017  
Accountability Report

**Agency Code:** **H12** **Section:** **014**

Partner Template

| Name of Partner Entity                             | Type of Partner Entity        | Description of Partnership                                                                                                                                                                                                                                                                                                                                                                                                                                             | Associated Objective(s)                  |
|----------------------------------------------------|-------------------------------|------------------------------------------------------------------------------------------------------------------------------------------------------------------------------------------------------------------------------------------------------------------------------------------------------------------------------------------------------------------------------------------------------------------------------------------------------------------------|------------------------------------------|
| Clemson University Foundation                      | Non-Governmental Organization | The Clemson University Foundation is an independent not-for-profit 501(c)(3) organization that promotes the welfare and future development of Clemson University                                                                                                                                                                                                                                                                                                       | all objectives (1.1.1 - 3.2.2)           |
| Clemson University Research Foundation             | Non-Governmental Organization | The Clemson University Research Foundation is a 501(c)(3) corporation founded exclusively for charitable, education, and scientific purposes that manages the process of moving Clemson University's innovative technologies from the laboratory into commercial markets via patent protection, marketing, education, material transfer, license negotiation, and providing support for Clemson University inventors and entrepreneurs.                                | 2.1.1, 2.1.2                             |
| Clemson University Real Estate Foundation          | Non-Governmental Organization | The Clemson University Real Estate Foundation, Inc., is an independent, non-profit, tax-exempt public charity incorporated under Section 501(c)(3) of the Internal Revenue Code. The foundation advances Clemson University through gifts of real estate and property, provides stewardship of real estate in support of the University, and assists/advises any college or department that includes a concentration in real estate as part of its academic offerings. | all objectives (1.1.1 - 3.2.2)           |
| The Clemson University Land Stewardship Foundation | Non-Governmental Organization | The Clemson University Land Stewardship Foundation, Inc., is an independent, non-profit, tax-exempt public charity incorporated under Section 501(c)(3) of the Internal Revenue Code. The foundation seeks to support Clemson through the development and related activities associated with real property, and to support Clemson University's economic development activities in communities throughout the state.                                                   | 1.3.1, 2.1.1, 2.1.2, 2.2.1, 2.2.2, 2.2.3 |



|                                                                        |                               |                                                                                                                                                                                                                                                                                                                                                                                                                                                                                                                               |                                |
|------------------------------------------------------------------------|-------------------------------|-------------------------------------------------------------------------------------------------------------------------------------------------------------------------------------------------------------------------------------------------------------------------------------------------------------------------------------------------------------------------------------------------------------------------------------------------------------------------------------------------------------------------------|--------------------------------|
| IPTAY                                                                  | Non-Governmental Organization | <p><b>IPTAY is a nonprofit public benefit corporation that provides scholarships for Clemson University student-athletes and non-athletes, helps Clemson University student-athletes be top competitors on the field and in the classroom, funds Tiger Band member uniforms and all travel expenses, and provides support for programs and facilities that maintain Clemson University's competitiveness in collegiate sports.</b></p>                                                                                        | 1.1.1, 1.2.1, 1.2.2,           |
| Clemson Alumni Association                                             | Non-Governmental Organization | <p><b>The Clemson Alumni Association is a non-profit organization that builds connections between Clemson University alumni and with the University to extend the Clemson Experience beyond graduation.</b></p>                                                                                                                                                                                                                                                                                                               |                                |
| South Carolina Commission on Higher Education                          | State Government              | <p><b>Clemson University works with the CHE via the latter's planning and approval authority to ensure institutional goals, student needs, and taxpayer interests are aligned as we deliver efficient, quality education. The partnership also ensures transparency of operations, coordination of information for the benefit of South Carolinians. Additionally, Clemson and CHE work cooperatively to facilitate the critical investments in research and economic development that benefit all South Carolinians.</b></p> | all objectives (1.1.1 - 3.2.2) |
| Southern Association of Colleges and Schools<br>Commission on Colleges | Professional Association      | <p><b>Clemson's partnership with our regional higher education institutional accrediting body helps ensure our institutional effectiveness, quality of education, and eligibility for federal financial aid funds.</b></p>                                                                                                                                                                                                                                                                                                    | all objectives (1.1.1 - 3.2.2) |
| Tri-County Technical College                                           | Higher Education Institute    | <p><b>The Clemson-TCTC partnership is the foundation of our Clemson Bridge program. This program allows certain students not directly admitted to Clemson to enroll at TCTC for their freshman year, and (subject to satisfying certain academic requirements) subsequently enroll at Clemson the following fall semester without being required to resubmit a Clemson admissions application.</b></p>                                                                                                                        | 1.1.1, 1.2.1, 1.2.2            |

|                                                                       |                               |                                                                                                                                                                                                                                                       |                                       |
|-----------------------------------------------------------------------|-------------------------------|-------------------------------------------------------------------------------------------------------------------------------------------------------------------------------------------------------------------------------------------------------|---------------------------------------|
| U.S. Department of Education/National Center for Education Statistics | Federal Government            | <b>Clemson University's work with NCES staff and reporting systems ensures that we collect, synthesize, analyze and interpret data that provides critical insight on the effectiveness and quality of our programs and the University as a whole.</b> | <b>all objectives (1.1.1 - 3.2.2)</b> |
| Association to Advance Collegiate Schools of Business - International | Professional Association      | <b>Clemson's partnership with the AACSB accrediting body ensures standards-based evidence-backed quality in our academic degree programs in business administration, management, and accounting.</b>                                                  | <b>all objectives (1.1.1 - 3.2.2)</b> |
| Accrediting Board for Engineering and Technology, Inc.                | Non-Governmental Organization | <b>Clemson's partnership with the ABET accrediting body ensures standards-based evidenced-backed quality in our academic degree programs in Computer Science and the Engineering disciplines.</b>                                                     | <b>all objectives (1.1.1 - 3.2.2)</b> |
| American Council for Construction Education                           | Professional Association      | <b>Clemson's partnership with the ACCE accrediting body ensures standards-based evidence-backed quality in our academic degree programs in Construction Science Management.</b>                                                                       | <b>all objectives (1.1.1 - 3.2.2)</b> |
| American Society of Landscape Architects                              | Professional Association      | <b>Clemson's partnership with the ASLA accrediting body ensures standards-based evidence-backed quality in our academic degree programs in Landscape Architecture.</b>                                                                                | <b>all objectives (1.1.1 - 3.2.2)</b> |
| Accreditation Council for Education in Nutrition and Dietetics        | Professional Association      | <b>Clemson's partnership with the ACEND accrediting body ensures standards-based evidence-backed quality in our academic degree programs in Nutrition and Dietetics.</b>                                                                              | <b>all objectives (1.1.1 - 3.2.2)</b> |
| Commission on Collegiate Nursing Education                            | Professional Association      | <b>Clemson's partnership with the CCNE accrediting body ensures standards-based evidence-backed quality in our academic degree programs in Nursing.</b>                                                                                               | <b>all objectives (1.1.1 - 3.2.2)</b> |

|                                                                        |                               |                                                                                                                                                                                                                                                             |                                       |
|------------------------------------------------------------------------|-------------------------------|-------------------------------------------------------------------------------------------------------------------------------------------------------------------------------------------------------------------------------------------------------------|---------------------------------------|
| Council for Accreditation of Counseling and Related Education Programs | Professional Association      | <b>Clemson's partnership with the CACREP accrediting body ensures standards-based evidence-backed quality in our academic graduate degree programs in counseling and student affairs practice.</b>                                                          | <b>all objectives (1.1.1 - 3.2.2)</b> |
| National Architectural Accrediting Board, Inc.                         | Non-Governmental Organization | <b>Clemson's partnership with the NAAB accrediting body ensures standards-based evidence-backed quality in our academic professional degree programs in Architecture.</b>                                                                                   | <b>all objectives (1.1.1 - 3.2.2)</b> |
| National Association of Schools of Arts and Design                     | Professional Association      | <b>Clemson's partnership with the NASAD accrediting body ensures standards-based evidence-backed quality in our academic degree programs in Art &amp; Design.</b>                                                                                           | <b>all objectives (1.1.1 - 3.2.2)</b> |
| National Council for Accreditation of Teacher Education                | Professional Association      | <b>Clemson's partnership with the NCATE (now CAEP) accrediting body ensures standards-based evidence-backed quality in our academic degree programs in elementary and secondary education that prepare teachers and other school professional personnel</b> | <b>all objectives (1.1.1 - 3.2.2)</b> |
| National Recreation and Parks Association                              | Professional Association      | <b>Clemson's partnership with the COAPRT accrediting body ensures standards-based evidence-backed quality in our academic degree programs in Parks, Recreation, and Tourism Management.</b>                                                                 | <b>all objectives (1.1.1 - 3.2.2)</b> |
| Planning Accreditation Board                                           | Professional Association      | <b>Clemson's partnership with the PAB accrediting body ensures standards-based evidence-backed quality in our academic graduate degree program in City and Regional Planning.</b>                                                                           | <b>all objectives (1.1.1 - 3.2.2)</b> |
| Society of American Foresters                                          | Professional Association      | <b>Clemson's partnership with the SAF accrediting body ensures standards-based evidence-backed quality in our academic degree programs in Forestry.</b>                                                                                                     | <b>all objectives (1.1.1 - 3.2.2)</b> |

|                                             |                                      |                                                                                                                                                                                                                                                                                                                                                                                                                                                                                                                                                                                                                                              |                                                                      |
|---------------------------------------------|--------------------------------------|----------------------------------------------------------------------------------------------------------------------------------------------------------------------------------------------------------------------------------------------------------------------------------------------------------------------------------------------------------------------------------------------------------------------------------------------------------------------------------------------------------------------------------------------------------------------------------------------------------------------------------------------|----------------------------------------------------------------------|
| <p>Greenville Health System</p>             | <p>Non-Governmental Organization</p> | <p>Clemson University's School of Health Research (CUSHR) has developed strategic partnerships with health care systems that give our faculty and students opportunities to engage in applied research, professional learning, and immersion experiences. One of CUSHR's important strategic partners is Greenville Health System, which named Clemson its primary health care research partner in 2013. GHS and other partners are key to CUSHR's efforts to affect positive change in health care, understanding that our efforts are better together.</p>                                                                                 | <p>1.3.1, 2.1.1, 2.1.2, 2.2.1, 2.2.2, 2.2.3</p>                      |
| <p>Medical Univeristy of South Carolina</p> | <p>Higher Education Institute</p>    | <p>The Clemson-MUSC Bioengineering Program is the manifestation of a rapidly growing educational and research partnership between Clemson University and the Medical University of South Carolina. The partnership's mission is to bridge engineering and physical sciences with the life sciences disciplines to better understand fundamental biological and disease processes.</p> <p>A new agreement between Clemson-MUSC has established a joint PhD program and provided a streamlined and/or accelerated pathway for Clemson undergraduates to begin work on their professional degrees while completing an undergraduate degree.</p> | <p>1.1.1, 1.2.1, 1.2.2, 1.3.1, 2.1.1, 2.1.2, 2.2.1, 2.2.2, 2.2.3</p> |
| <p>EAB</p>                                  | <p>Private Business Organization</p> | <p>Clemson's partnership with EAB's Student Success Collaborative facilitates the use of big data and analytical tools to increase student success, retention, and graduation rates.</p>                                                                                                                                                                                                                                                                                                                                                                                                                                                     | <p>1.1.1, 1.2.1, 1.2.2, 3.1.1, 3.1.2</p>                             |

|                                           |                               |                                                                                                                                                                                                                                                                                                                                                                                                                                                                                                                                                           |                                          |
|-------------------------------------------|-------------------------------|-----------------------------------------------------------------------------------------------------------------------------------------------------------------------------------------------------------------------------------------------------------------------------------------------------------------------------------------------------------------------------------------------------------------------------------------------------------------------------------------------------------------------------------------------------------|------------------------------------------|
| PGA of America                            | Professional Association      | Clemson's partnership with the PGA of American ensures practical and standards-based preparation of certified PGA professionals via our PGA Professional Golf Management program.                                                                                                                                                                                                                                                                                                                                                                         | 1.1.1, 1.2.1, 1.2.2, 3.1.1, 3.1.2        |
| Greenwood Genetics Center                 | Non-Governmental Organization | The Clemson-GCC partnership provides a core campus for recruiting research and development companies engaged in human diagnostics, cognitive development, central nervous system, autism, birth defects, cancer and inflammatory diseases. The collaborative seeks new discoveries in genetic diagnostics and epigenetic therapeutics, and will expand Clemson University's existing doctoral program in genetics, create an internationally competitive research and development team and expand research capabilities at the GCC's J.C. Self Institute. | 1.3.1, 2.1.1, 2.1.2, 2.2.1, 2.2.2, 2.2.3 |
| Academic Global Partnerships (various)    | Higher Education Institute    | Clemson University, through its Office of Global Engagement, has existing partnerships and exchange agreements in over 60 countries that fulfill the strategic educational, research, economic, and public service goals of the University. These partnerships, that are established and operate through memoranda of understanding, student exchange agreements, and activity agreements, may be viewed via the database at <a href="https://alpha.ucosmic.com/">https://alpha.ucosmic.com/</a>                                                          | all objectives (1.1.1 - 3.2.2)           |
| Corporate/Business partnerships (various) | Private Business Organization | Clemson University has myriad partnerships with international, national, regional, state, and local businesses that fulfill mutual goals regarding education, workforce development, research and intellectual property, service, and economic development.                                                                                                                                                                                                                                                                                               | all objectives (1.1.1 - 3.2.2)           |

|                                                             |                    |                                                                                                                                                                                                                                                                                                                                                                                                                                                                                                                                                                                           |                                                 |
|-------------------------------------------------------------|--------------------|-------------------------------------------------------------------------------------------------------------------------------------------------------------------------------------------------------------------------------------------------------------------------------------------------------------------------------------------------------------------------------------------------------------------------------------------------------------------------------------------------------------------------------------------------------------------------------------------|-------------------------------------------------|
| Individual and Private Foundation Partnerships<br>(various) | Individual         | <b>Clemson University has myriad partnerships with individual donors and philanthropic organizations that fulfill mutual goals and interests regarding education, research, economic development, public service and engagement, and athletics.</b>                                                                                                                                                                                                                                                                                                                                       | <b>all objectives (1.1.1 - 3.2.2)</b>           |
| National Laboratories (various)                             | Federal Government | <b>Clemson University has multiple partnerships with various national laboratories and federal agencies that fulfill mutual goals regarding research, development, and public engagement. An example is our partnership with Savannah River National Laboratory, the Pacific Northwest National Laboratory, Oak Ridge National Laboratory, and the Department of Defense to enhance and protect the U.S. national electrical grid.</b>                                                                                                                                                    | <b>1.3.1, 2.1.1, 2.1.2, 2.2.1, 2.2.2, 2.2.3</b> |
| City of Clemson                                             | Local Government   | <b>Clemson University's partnership with the City of Clemson, which is realized through their Joint City-University Advisory Board and their joint membership in the International Town Gown Association, functions on a daily basis to ensure provision of essential services to both City residents and University citizens, co-fund joint projects and programming initiatives that serve both entities' missions, facilitate comprehensive strategic planning by both entities, and provide an attractive environment in which City residents and University citizens can thrive.</b> | <b>all objectives (1.1.1 - 3.2.2)</b>           |
| Various                                                     |                    | <b>Clemson's Cooperative Education Program partners with various entities of various natures to provide our undergraduate students with mentored work experience in their chosen field while benefiting the organizations where they work.</b>                                                                                                                                                                                                                                                                                                                                            | <b>1.1.1, 1.2.2, 3.1.1., 3.1.2</b>              |

|                                                        |                                 |                                                                                                                                                                                                                                                                                                                                                                                                                                                                                                   |                                                                      |
|--------------------------------------------------------|---------------------------------|---------------------------------------------------------------------------------------------------------------------------------------------------------------------------------------------------------------------------------------------------------------------------------------------------------------------------------------------------------------------------------------------------------------------------------------------------------------------------------------------------|----------------------------------------------------------------------|
| <p>Various SC elementary, middle, and high schools</p> | <p>K-12 Education Institute</p> | <p><b>Clemson faculty, staff, and students in our Center of Excellence for Innovation in Mathematics and Science Education, National Dropout Prevention Center/Network, and Reading Recovery and Early Literacy Training Center for South Carolina partner with K-12 teachers, administrators, and students to explore and initiate programs and methods that enhance K-12 student access and success, and disseminate valuable information, research, and results to the K-12 community.</b></p> | <p><b>2.1.1, 2.1.2, 2.2.1, 2.2.2, 2.2.3, 3.1.1, 3.1.2, 3.2.2</b></p> |
|--------------------------------------------------------|---------------------------------|---------------------------------------------------------------------------------------------------------------------------------------------------------------------------------------------------------------------------------------------------------------------------------------------------------------------------------------------------------------------------------------------------------------------------------------------------------------------------------------------------|----------------------------------------------------------------------|

Agency Name: **Clemson University**

Fiscal Year 2016-2017

Accountability Report

Agency Code: **H12** Section: **014**

Report Template

| Item | Report Name                                                 | Name of Entity Requesting the Report                                    | Type of Entity       | Reporting Frequency | Submission Date (MM/DD/YYYY)                  | Summary of Information Requested in the Report                                                                                                                                                                                                                                | Method to Access the Report                                                                      |
|------|-------------------------------------------------------------|-------------------------------------------------------------------------|----------------------|---------------------|-----------------------------------------------|-------------------------------------------------------------------------------------------------------------------------------------------------------------------------------------------------------------------------------------------------------------------------------|--------------------------------------------------------------------------------------------------|
| 1    | CHE Institutional Effectiveness Report                      | South Carolina Commission on Higher Education                           | State                | Annually            | October 21, 2016                              | By statute (Section 59-101-350): Student scores on professional examinations with detailed information on state and national means, passing scores, and pass rates, as available, and with information on such scores over time, and the number of students taking each exam. | Jeremy King, Associate Provost<br>jking2@clemson.edu                                             |
| 2    | Accountability Report                                       | State Budget and Control Board                                          | State                | Annually            | September 15, 2017                            | Alignment of institutional finances, mission, activities, and outcomes with State priorities                                                                                                                                                                                  | Jeremy King, Associate Provost<br>jking2@clemson.edu                                             |
| 3    | Research Misconduct report                                  | US-DHHS - Office of Research Integrity                                  | Federal              | Annually            | January 25, 2017                              | Federal regulation (42 C.F.R. Part §93.301) requires annual reporting of research misconduct allegations and investigations and confirmation of a compliant misconduct policy related to Public Health Services funding                                                       | Tracey Arwood, Director<br>Clemson University Offices of Research Compliance and Research Safety |
| 4    | Research Misconduct report                                  | US Dept of Education                                                    | Federal              | Annually            | August 4, 2016                                | Federal regulation (65 Fed. Reg. 76,260) requires annual reporting of research misconduct activity and confirmation of a compliant misconduct policy related to US-DoEd funding                                                                                               | Tracey Arwood, Director<br>Clemson University Offices of Research Compliance and Research Safety |
| 5    | Institutional Review Board (IRB) assurance and registration | US-DHHS - Office for Human Research Protections                         | Federal              | Annually            | August 15, 2016                               | Federal regulation (45 C.F.R. Part §46.103 and §46.501) requires annual update                                                                                                                                                                                                | Tracey Arwood, Director<br>Clemson University Offices of Research Compliance and Research Safety |
| 6    | Institutional Biosafety Committee (IBC) Registration        | NIH-Office of Biotechnology Activities                                  | Federal              | Annually            | November 5, 2016                              | NIH Guidelines requires annual update of members of IBC Committee and activity                                                                                                                                                                                                | Tracey Arwood, Director<br>Clemson University Offices of Research Compliance and Research Safety |
| 7    | Accredited Unit Annual Report                               | AAALAC International                                                    | Outside Organization | Annually            | December 29, 2016                             | Physical support areas, organizational structure, animal numbers used                                                                                                                                                                                                         | Tracey Arwood, Director<br>Clemson University Offices of Research Compliance and Research Safety |
| 8    | NIH OBA Annual Report                                       | National Institutes of Health (NIH) Office of Laboratory Welfare (OLAW) | Federal              | Annually            | January 13, 2017                              | OLAW requires annual updates including program changes, semiannual program evaluations and facility inspections                                                                                                                                                               | Tracey Arwood, Director<br>Clemson University Offices of Research Compliance and Research Safety |
| 9    | Annual Report of Research Facility APHIS form 7023          | US Department of Agriculture/Animal and Plant Health Inspection Service | Federal              | Annually            | November 18, 2016                             | USDA/APHIS requires annual report of numbers of animals used which are covered by the Animal Welfare Act                                                                                                                                                                      | Tracey Arwood, Director<br>Clemson University Offices of Research Compliance and Research Safety |
| 10   | Hazardous Waste Quarterly Report                            | SC Department of Health and Environmental Control                       | State                | Quarterly           | within 30 days from end of respective quarter | By R.61-79Hazardous Waste listed by assigned Index Numbers in pounds generated on site and pounds shipped off site, transporters and their DOT permit #s, TSDF EPA ID #s, new Hazardous Waste Streams generated each quarter                                                  | Tracey Arwood, Director<br>Clemson University Offices of Research Compliance and Research Safety |
| 11   | Hazardous Waste Notice of Activity                          | SC Department of Health and Environmental Control                       | State                | Annually            | by January 30 each year                       | R.61-79 annually for all CU facilities that are classified under the regulations as Small Quantity Generators of Hazardous Waste                                                                                                                                              | Tracey Arwood, Director<br>Clemson University Offices of Research Compliance and Research Safety |
| 12   | Hazardous Waste Minimization Report                         | SC Department of Health and Environmental Control                       | State                | Annually            | by January 30 each year                       | R.61-79 regulations verifying CU has implemented a Hazardous Waste Minimization Plan                                                                                                                                                                                          | Tracey Arwood, Director<br>Clemson University Offices of Research Compliance and Research Safety |
| 13   | Hazardous Waste Notice of Activity                          | SC Department of Health and Environmental Control                       | State                |                     | varies                                        | R.61-79 regulations when any CU site with an EPA Hazardous Waste Generator ID # has changes to its information on file                                                                                                                                                        | Tracey Arwood, Director<br>Clemson University Offices of Research Compliance and Research Safety |
| 14   | Infectious Waste Generator Registration                     | SC Department of Health and Environmental Control                       | State                |                     | varies                                        | R.61-105 regulations requires registration when any CU facility generates Infectious Waste                                                                                                                                                                                    | Tracey Arwood, Director<br>Clemson University Offices of Research Compliance and Research Safety |
| 15   | Infectious Waste Generator Renewal Form                     | SC Department of Health and Environmental Control                       | State                |                     | by July 31 every 3 years                      | R.61-105                                                                                                                                                                                                                                                                      | Tracey Arwood, Director<br>Clemson University Offices of Research Compliance and Research Safety |
| 16   | NRC Form 742. Material Balance Report                       | US Nuclear Regulatory Commission                                        | Federal              | Annually            | February 16, 2017                             | Special Nuclear Material received, produced, possessed, transferred, consumed, disposed of, or lost.                                                                                                                                                                          | Tracey Arwood, Director<br>Clemson University Offices of Research Compliance and Research Safety |



|    |                                           |                                                  |         |          |                   |                                                                                                                                                                                                                                                                                                                                                                                                                                                                                                                                                                                                                                                                                                                                                                                                                                                                              |                                                                                                                                               |
|----|-------------------------------------------|--------------------------------------------------|---------|----------|-------------------|------------------------------------------------------------------------------------------------------------------------------------------------------------------------------------------------------------------------------------------------------------------------------------------------------------------------------------------------------------------------------------------------------------------------------------------------------------------------------------------------------------------------------------------------------------------------------------------------------------------------------------------------------------------------------------------------------------------------------------------------------------------------------------------------------------------------------------------------------------------------------|-----------------------------------------------------------------------------------------------------------------------------------------------|
| 17 | NRC Form 742C. Physical Inventory Listing | US Nuclear Regulatory Commission                 | Federal | Annually | February 16, 2017 | Physical Inventory of Special Nuclear Material                                                                                                                                                                                                                                                                                                                                                                                                                                                                                                                                                                                                                                                                                                                                                                                                                               | Tracey Arwood, Director<br>Clemson University Offices of Research Compliance and Research Safety                                              |
| 18 | Leave Transfer Pool Program               | South Carolina Division of State Human Resources | State   | Annually | March 1, 2017     | S.C. Code Section 8-11-770; State HR Regulations 19-711.02 - Total hours and cost for donated and taken Sick and Annual Leave, as well as, remaining balances in pool.                                                                                                                                                                                                                                                                                                                                                                                                                                                                                                                                                                                                                                                                                                       | Sumbitted via email to Division of State Human Resources: Greggs, Christopher <Christopher.Greggs@admin.sc.gov>                               |
| 19 | Bonuses                                   | South Carolina Division of State Human Resources | State   | Annually | August 31, 2016   | Section 117.55 of the 2016-2017 Appropriations Act - Name, Funding Sources, and reasons for any employee bonuses. The employing agency must report this information on or before August thirty-first of each year and must include the total amount and source of the bonus received by the employee during the preceding fiscal year (July first through June thirtieth).                                                                                                                                                                                                                                                                                                                                                                                                                                                                                                   | Sumbitted via email to Division of State Human Resources: Greggs, Christopher <Christopher.Greggs@admin.sc.gov>                               |
| 20 | Monetary Awards                           | South Carolina Division of State Human Resources | State   | Annually | August 31, 2016   | Section 117.15 of the 2016-2017 Appropriations Act - (Allowance for Residences and Compensation Restrictions)                                                                                                                                                                                                                                                                                                                                                                                                                                                                                                                                                                                                                                                                                                                                                                | Sumbitted via email to Division of State Human Resources: Greggs, Christopher <Christopher.Greggs@admin.sc.gov>                               |
| 21 | Voluntary Separation Program              | South Carolina Division of State Human Resources | State   | Annually | August 15, 2016   | Section 117.32 of the 2016-2017 Appropriations Act - The program must be approved by the agency head and the Director of the Human Resources Division based on ability to demonstrate recurring cost savings for realignment and/or permanent downsizing. State agencies shall report the prior year's results to the Department of Administration by August fifteenth, of the current fiscal year. Report shows Total Cost, # of employees, & Cost savings amounts.                                                                                                                                                                                                                                                                                                                                                                                                         | Sumbitted via email to Division of State Human Resources: Greggs, Christopher <Christopher.Greggs@admin.sc.gov>                               |
| 22 | Salary Supplements                        | South Carolina Division of State Human Resources | State   | Annually | August 31, 2016   | Section 93.17 of the 2016-2017 Appropriations Act (Compensation-Reporting of Supplemental Salaries) - Any compensation, excluding travel reimbursement, from an affiliated public charity, foundation, clinical faculty practice plan, or other public source or any supplement from a private source to the salary appropriated for a state employee and fixed by the State must be reported by the employing agency to the Department of Administration. The report must include the employee's base salary, amount of the supplement, source of the supplement, and any condition of the supplement. The employing agency must report this information on or before August thirty-first of each year and must include the total amount and source of the salary supplement received by the employee during the preceding fiscal year (July first through June thirtieth). | Sumbitted via email to Division of State Human Resources: Greggs, Christopher <Christopher.Greggs@admin.sc.gov>                               |
| 23 | Organizational Charts                     | South Carolina Division of State Human Resources | State   | Annually | September 1, 2016 | Section 117.48 of the 2016-2017 Appropriations Act (Organizational Charts) and S.C. Code Section 1-1-970 - Departments and institutions of state government shall furnish to the Human Resources Division (1) a current personnel organizational chart annually no later than September first. showing all authorized positions, class title, class code, position number and indications as to whether such positions are filled or vacant. In addition, the organizational chart shall clearly identify those employees who are exempt from the State Employee Grievance Procedure Act.                                                                                                                                                                                                                                                                                    | Sumbitted URL link to Clemson Org Chart via email to Division of State Human Resources: Greggs, Christopher <Christopher.Greggs@admin.sc.gov> |
| 24 | Telecommuting                             | South Carolina Division of State Human Resources | State   | Annually | August 15, 2016   | State Employee Telecommuting Guidelines - Agency utilization of Telecommuting. Report provides Number of employees by Class Code(jobcode).                                                                                                                                                                                                                                                                                                                                                                                                                                                                                                                                                                                                                                                                                                                                   | Sumbitted via email to Division of State Human Resources: Greggs, Christopher <Christopher.Greggs@admin.sc.gov>                               |

|    |                                 |                                                                             |        |                                         |                                                                                                           |                                                                                                                                                                                                                                                                                                                                                                                                                                                                                                                                                                                                                                                                                                                                                                                                                                            |                                                                                                                 |
|----|---------------------------------|-----------------------------------------------------------------------------|--------|-----------------------------------------|-----------------------------------------------------------------------------------------------------------|--------------------------------------------------------------------------------------------------------------------------------------------------------------------------------------------------------------------------------------------------------------------------------------------------------------------------------------------------------------------------------------------------------------------------------------------------------------------------------------------------------------------------------------------------------------------------------------------------------------------------------------------------------------------------------------------------------------------------------------------------------------------------------------------------------------------------------------------|-----------------------------------------------------------------------------------------------------------------|
| 25 | Retirement Incentive Program    | South Carolina Division of State Human Resources                            | State  | Annually                                | August 15, 2016                                                                                           | S.C. Code Sections 9-1-1140 (H) and 9-11-50 (H) - State agencies shall report the prior year's results to the Department of Administration by August fifteenth, of the current fiscal year. Report shows Total Cost, # of employees, & Cost savings amounts.                                                                                                                                                                                                                                                                                                                                                                                                                                                                                                                                                                               | Sumbitted via email to Division of State Human Resources: Greggs, Christopher <Christopher.Greggs@admin.sc.gov> |
| 26 | Furlough                        | South Carolina Division of State Human Resources                            | State  | Annually                                | August 15, 2016                                                                                           | S.C. Code Sections 8-11-192 and 8-11-193; Sections 117.68, 117.71 and 117.75 of the 2016-2017 Appropriations Act - State agencies shall report the prior year's results to the Department of Administration by August fifteenth, of the current fiscal year. Report shows Division, # of employees, estimated cost savings & # of days furloughed.                                                                                                                                                                                                                                                                                                                                                                                                                                                                                         | Sumbitted via email to Division of State Human Resources: Greggs, Christopher <Christopher.Greggs@admin.sc.gov> |
| 27 | Fair Market Value of Residences | South Carolina Division of State Human Resources                            | State  | Annually                                | October 1, 2016                                                                                           | Section 117.15 of the 2016-2017 Appropriations Act (Allowance for Residences and Compensation Restrictions) - Report provides fair market value of President's house.                                                                                                                                                                                                                                                                                                                                                                                                                                                                                                                                                                                                                                                                      | Sumbitted via email to Division of State Human Resources: Greggs, Christopher <Christopher.Greggs@admin.sc.gov> |
| 28 | Dual Employment                 | South Carolina Division of State Human Resources                            | State  | Annually                                | September 15, 2016                                                                                        | Provides Paying and Home agency and dollar amounts paid on each employee dually employed.                                                                                                                                                                                                                                                                                                                                                                                                                                                                                                                                                                                                                                                                                                                                                  | Sumbitted via email to Division of State Human Resources: Renee Bolden                                          |
| 29 | SC New Hire Reporting           | Child Support Services Division of State                                    | State  | With-in 20 days of a new hire or rehire | Based on the 20 day requirement, we report on the 15th and Last day of each month                         | Reporting required information on newly hired or rehired employees with-in 20 days of employee start date to be in compliance with section 43-5-598 of the SC Code of Laws and 42 USC Sec. 653a as part of the Personal Responsibility and Work Opportunity Reconciliation Act of 1996 (Federal Welfare Reform).                                                                                                                                                                                                                                                                                                                                                                                                                                                                                                                           | <a href="https://newhire.sc.gov/employer">https://newhire.sc.gov/employer</a>                                   |
| 30 | Multiple Worksite Report        | Bureau of Labor Statistics; SC Department of Employment and Workforce (DEW) | US DOL | Quarterly                               | Last day of the month after the end of a quarter: 1/31/xx, 4/30/xx, 7/31/xx, 10/31/xx                     | Multi-location employers provide employment and wage data for all of their establishments covered under one Unemployment Account in a State. By SC counties, report number of employees on the 12th of each month, as well as total wages for the quarter.                                                                                                                                                                                                                                                                                                                                                                                                                                                                                                                                                                                 | <a href="https://idcf.bls.gov/authentication/login">https://idcf.bls.gov/authentication/login</a>               |
| 31 | Payroll Report                  | State Accident Fund                                                         | State  | Annually                                | August 15th Annually for prior fiscal year                                                                | Annual reporting of various data used to determine workers compensation annual premiums. Data reported includes:<br>- Summary page showing Number of Employees by WC class codes and reported payroll<br>- Summary page showing university contacts for executive, premium, safety and claims personnel<br>- Copies of 941's<br>- Patient Contact Courses showing total number of students enrolled in course where students come in contact with medical patients<br>- Submission of Application for Drug and Alcohol Free Workplace Premium Credit Program<br>- Aircraft Information<br>- Pilot information<br>- Fire/EMS Volunteer Roster<br>- Emergency Response Student Roster, showing students with an academic EMR practicum<br>- Foreign Travel Report listing faculty and staff who left the country for business related travel | E-mail Kirk Adair, Premium Auditor, at kadair@saf.sc.gov.                                                       |
| 32 | Retirement Reporting            | SCRS                                                                        | State  | Monthly; Quarterly; and Adjustments     | Due on the last day of the month for the prior month. This is "received as of" date, not a postmark date. | Monthly remittance of liability. Quarterly reporting of employee earnings and withholdings for employee retirement service credit. Adjustments as needed.                                                                                                                                                                                                                                                                                                                                                                                                                                                                                                                                                                                                                                                                                  | E-mail to SERVICEACCOUNTING@PEBA.SC.GOV                                                                         |

|    |                                                                                          |                                                 |                      |                                   |                                                               |                                                                                                                                                                                                                                                                                                                                                                                                                                                                                                                                                                                                              |                                                                                                                                                                                               |
|----|------------------------------------------------------------------------------------------|-------------------------------------------------|----------------------|-----------------------------------|---------------------------------------------------------------|--------------------------------------------------------------------------------------------------------------------------------------------------------------------------------------------------------------------------------------------------------------------------------------------------------------------------------------------------------------------------------------------------------------------------------------------------------------------------------------------------------------------------------------------------------------------------------------------------------------|-----------------------------------------------------------------------------------------------------------------------------------------------------------------------------------------------|
| 33 | A-133 Audit Report (FY2015)                                                              | United States Office of Management and Budget   | Federal              | Annually                          | October 1, 2016                                               | Expenditures on Federal fund sources                                                                                                                                                                                                                                                                                                                                                                                                                                                                                                                                                                         | <a href="http://www.clemson.edu/research/grants-contracts/">http://www.clemson.edu/research/grants-contracts/</a>                                                                             |
| 34 | Federal Clearinghouse Data Collection Form                                               | United States Office of Management and Budget   | Federal              | Annually                          | February 1, 2017                                              | Expenditures on Federal Awards                                                                                                                                                                                                                                                                                                                                                                                                                                                                                                                                                                               | <a href="https://harvester.census.gov/facweb/">https://harvester.census.gov/facweb/</a>                                                                                                       |
| 35 | Student Financial Aid - EZ Audit                                                         | US Department of Education                      | Federal              | Annually                          | February 1, 2017                                              | Expenditures of Federal Student Aid                                                                                                                                                                                                                                                                                                                                                                                                                                                                                                                                                                          | <a href="https://www.ezaudit.ed.gov">https://www.ezaudit.ed.gov</a>                                                                                                                           |
| 36 | HEOA Title II                                                                            | US Department of Education                      | Federal              | Bi-annually                       | May 1, 2017                                                   | Report on basic aspects of teacher preparation program including admissions requirements; number of students enrolled by gender, race and ethnicity; supervised clinical experiences; number of students enrolled by major and subject area; number of program completers; goals for increasing number of teachers in critical shortage areas; how students performed on initial state licensing and certification assessments; current accreditation status; plans for preparing teachers to use technology, work with students with disabilities, and teach students who have limited English proficiency. | Dean of the Clemson University College of Education, George J. Petersen                                                                                                                       |
| 37 | Fiscal Operations Report and Application to Participate (FISAP)                          | US Department of Education                      | Federal              | Annually                          | October 1, 2016                                               | Federal government required annual review of the awarding of Title IV Campus-based funds (SEOG, FWS & Perkins) from previous academic year. Also requires request for funding for next academic year.                                                                                                                                                                                                                                                                                                                                                                                                        | Clemson University Director of Financial Aid, Richard Ritzman                                                                                                                                 |
| 38 | Eligibility and Certification Approval                                                   | US Department of Education                      | Federal              | As Needed                         |                                                               | Federal government must be informed whenever changes occur at the institution that may affect awarding and/or disbursing of federal financial aid funds.                                                                                                                                                                                                                                                                                                                                                                                                                                                     | Clemson University Director of Financial Aid, Richard Ritzman                                                                                                                                 |
| 39 | CTP-Intellectual Disabilities Report                                                     | US Department of Education                      | Federal              | Annually                          | October 1, 2016                                               | Federal government required annual reporting of campus based expenditures related to the Clemson Life program.                                                                                                                                                                                                                                                                                                                                                                                                                                                                                               | Clemson University Director of Financial Aid, Richard Ritzman                                                                                                                                 |
| 40 | Jeanne Clery Disclosure of Campus Security Policy and Campus Crime Statistics Act Report | US Department of Education                      | Federal              | Annually                          | October 13, 2016                                              | Disclosure of information about crime on or near university locations/sites.                                                                                                                                                                                                                                                                                                                                                                                                                                                                                                                                 | <a href="https://www.clemson.edu/cusafety/crime-reporting-statistics/documents/annual-report.pdf">https://www.clemson.edu/cusafety/crime-reporting-statistics/documents/annual-report.pdf</a> |
| 41 | NCAA Revenue Distribution Reporting                                                      | National Collegiate Athletic Association (NCAA) | Outside Organization | Annually                          | August 24, 2016                                               | The NCAA annually requires member institutions to report their uses of various funds that are provided, directly or indirectly through the member institution's conference.                                                                                                                                                                                                                                                                                                                                                                                                                                  | Dan Radakovich, Director of Athletics                                                                                                                                                         |
| 42 | Equity in Athletics Data Analysis (EADA)                                                 | U.S. Department of Education                    | Federal              | Annually                          | October 28, 2016                                              | The Equity in Athletics Disclosure Act requires co-educational institutions of postsecondary education that participate in a Title IV, federal student financial assistance program, and have an intercollegiate athletic program, to prepare an annual report to the Department of Education on athletic participation, staffing, and revenues and expenses, by men's and women's teams. The Department will use this information in preparing its required report to the Congress on gender equity in intercollegiate athletics.                                                                           | Dan Radakovich, Director of Athletics                                                                                                                                                         |
| 43 | NCAA Sports Sponsorship and Demographics                                                 | National Collegiate Athletic Association (NCAA) | Outside Organization | Annually                          | August 1, 2016                                                | The NCAA requires member institution's to report on the number of sports sponsored and to detail the demographic information of the athletic department (i.e., student-athletes, coaches, administration and staff)                                                                                                                                                                                                                                                                                                                                                                                          | Dan Radakovich, Director of Athletics                                                                                                                                                         |
| 44 | Florida New Hire Reporting                                                               | Florida Department of Revenue                   | Outside Organization | With-in 20 days of hire or rehire | As soon as the department sends Payroll the Out-of-State form | Reporting New Hires for Child Support purposes                                                                                                                                                                                                                                                                                                                                                                                                                                                                                                                                                               | <a href="https://newhire.state.fl.us/SitePages/home.aspx">https://newhire.state.fl.us/SitePages/home.aspx</a>                                                                                 |
| 45 | Georgia New Hire Reporting                                                               | Georgia New Hire Reporting Progra               | Outside Organization | With-in 10 days of hire or rehire | As soon as the department sends Payroll the Out-of-State form | Reporting New Hires for Child Support purposes                                                                                                                                                                                                                                                                                                                                                                                                                                                                                                                                                               | <a href="https://newhire-reporting.com/GA-Newhire/logon.aspx">https://newhire-reporting.com/GA-Newhire/logon.aspx</a>                                                                         |

|    |                                   |                                                              |                      |                                   |                                                                                                                                                                                                                                                                   |                                                                                                                                                                               |                                                                                                                                       |
|----|-----------------------------------|--------------------------------------------------------------|----------------------|-----------------------------------|-------------------------------------------------------------------------------------------------------------------------------------------------------------------------------------------------------------------------------------------------------------------|-------------------------------------------------------------------------------------------------------------------------------------------------------------------------------|---------------------------------------------------------------------------------------------------------------------------------------|
| 46 | Michigan New Hire Reporting       | Michigan New Hire Operations Cen                             | Outside Organization | With-in 20 days of hire or rehire | As soon as the department sends Payroll the Out-of-State form                                                                                                                                                                                                     | Reporting New Hires for Child Support purposes                                                                                                                                | <a href="#">Form 3281 or MI W-4</a>                                                                                                   |
| 47 | Mississippi New Hire Reporting    | Mississippi State Directory of New                           | Outside Organization | With-in 15 days of hire or rehire | As soon as the department sends Payroll the Out-of-State form                                                                                                                                                                                                     | Reporting New Hires for Child Support purposes                                                                                                                                | <a href="https://ms-newhire.com/">https://ms-newhire.com/</a>                                                                         |
| 48 | Missouri New Hire Reporting       | Missouri Department of Social Serv                           | Outside Organization | With-in 20 days of hire or rehire | As soon as the department sends Payroll the Out-of-State form                                                                                                                                                                                                     | Reporting New Hires for Child Support purposes                                                                                                                                | <a href="https://www.missouriemployer.dss.mo.gov/default.aspx">https://www.missouriemployer.dss.mo.gov/default.aspx</a>               |
| 49 | New York New Hire Reporting       | New York State                                               | Outside Organization | With-in 20 days of hire or rehire | As soon as the department sends Payroll the Out-of-State form                                                                                                                                                                                                     | Reporting New Hires for Child Support purposes                                                                                                                                | <a href="https://www.nynewhire.com/NYNewHireServlet">https://www.nynewhire.com/NYNewHireServlet</a>                                   |
| 50 | North Carolina New Hire Reporting | North Carolina Department of Health and Human Services       | Outside Organization | With-in 20 days of hire or rehire | As soon as the department sends Payroll the Out-of-State form                                                                                                                                                                                                     | Reporting New Hires for Child Support purposes                                                                                                                                | <a href="http://newhire-reporting.com/NC-Newhire/Default.aspx">http://newhire-reporting.com/NC-Newhire/Default.aspx</a>               |
| 51 | Ohio New Hire Reporting           | Ohio New Hire Reporting Center                               | Outside Organization | With-in 20 days of hire or rehire | As soon as the department sends Payroll the Out-of-State form                                                                                                                                                                                                     | Reporting New Hires for Child Support purposes                                                                                                                                | <a href="https://newhire-reporting.com/OH-Newhire/default.aspx">https://newhire-reporting.com/OH-Newhire/default.aspx</a>             |
| 52 | Oregon New Hire Reporting         | Oregon Department of Justice<br>Oregon Child Support Program | Outside Organization | With-in 20 days of hire or rehire | As soon as the department sends Payroll the Out-of-State form                                                                                                                                                                                                     | Reporting New Hires for Child Support purposes                                                                                                                                | <a href="http://www.oregonchildsupport.gov/employers/reporting.shtml">http://www.oregonchildsupport.gov/employers/reporting.shtml</a> |
| 53 | Virginia New Hire Reporting       | Virginia New Hire Reporting Center                           | Outside Organization | With-in 20 days of hire or rehire | As soon as the department sends Payroll the Out-of-State form                                                                                                                                                                                                     | Reporting New Hires for Child Support purposes                                                                                                                                | <a href="https://va-newhire.com/login">https://va-newhire.com/login</a>                                                               |
| 54 | Wyoming New Hire Reporting        | Wyoming New Hire Reporting Cent                              | Outside Organization | With-in 20 days of hire or rehire | As soon as the department sends Payroll the Out-of-State form                                                                                                                                                                                                     | Reporting New Hires for Child Support purposes                                                                                                                                | <a href="http://newhire-reporting.com/wy-newhire/default.aspx">http://newhire-reporting.com/wy-newhire/default.aspx</a>               |
| 55 | Current Employment Statistics     | Bureau of Labor Statistics                                   | Federal              | Monthly                           | By 25th of each month for information for the pay period that includes the 12th of the month                                                                                                                                                                      | Reporting the employee count for all employees, women employees, and faculty members.                                                                                         | <a href="https://cesdata.bls.gov/CESLite/?respondent=450008093">https://cesdata.bls.gov/CESLite/?respondent=450008093</a>             |
| 56 | CHE Management Information System | South Carolina Commission on Higher Education                | State                |                                   | Each semester or annually. Reported each semester according to the schedule published:<br><a href="http://www.che.sc.gov/InstitutionsEducators/CHEMIS/CHEMISReportingDates.aspx">http://www.che.sc.gov/InstitutionsEducators/CHEMIS/CHEMISReportingDates.aspx</a> | Data on students enrolled, course enrollment, course scheduling, course instructors, faculty data, facility data, scholarship data, free credits summary and degrees awarded. | <a href="http://www.che.sc.gov/DataPublications.aspx">http://www.che.sc.gov/DataPublications.aspx</a>                                 |

|    |                                                        |                                                                               |                      |             |                                                                                                                                                                                                                                            |                                                                                                                                       |                                                                                                                                                                                                       |
|----|--------------------------------------------------------|-------------------------------------------------------------------------------|----------------------|-------------|--------------------------------------------------------------------------------------------------------------------------------------------------------------------------------------------------------------------------------------------|---------------------------------------------------------------------------------------------------------------------------------------|-------------------------------------------------------------------------------------------------------------------------------------------------------------------------------------------------------|
| 57 | Integrated Postsecondary Education Data System (IPEDS) | National Center for Education Statistics (NCES)                               | Federal              | Annually    | Fall, winter and spring. Different parts of the data are submitted at different times during the year:<br><a href="http://nces.ed.gov/ipeds/Home/ReportYourData">http://nces.ed.gov/ipeds/Home/ReportYourData</a>                          | Summary information on students, courses, tuition, employees.                                                                         | <a href="http://nces.ed.gov/ipeds">http://nces.ed.gov/ipeds</a>                                                                                                                                       |
| 58 | Gainful Employment (GE) Programs                       | Secretary of Education                                                        | Federal              |             | Typically prior to fall semester. Program information must be kept up to date on Clemson's web and new programs reported to the Secretary prior to implementation. Further information will be available from the Office of Financial Aid. | Program description and costs, graduation rates, debt on graduation, job placement rates, and other information about these programs. | <a href="http://ifap.ed.gov/ifap/">http://ifap.ed.gov/ifap/</a>                                                                                                                                       |
| 59 | New degree programs and terminated programs            | South Carolina Commission on Higher Education                                 | State                |             | Ongoing basis. Any substantial changes in programs must be reported in a timely fashion.                                                                                                                                                   | Detailed proposals for new certificates and degree programs require approval from the CHE.                                            | <a href="http://www.che.sc.gov/InstitutionsEducators/AcademicPolicies_Programs/AcademicPrograms.aspx">http://www.che.sc.gov/InstitutionsEducators/AcademicPolicies_Programs/AcademicPrograms.aspx</a> |
| 60 | New degree programs and terminated programs            | Southern Association of Colleges and Schools Commission on Colleges (SACSCOC) | Outside Organization |             | Ongoing basis. Any substantial changes in programs or operations must be reported in a timely fashion.                                                                                                                                     | Descriptions of all substantive changes in degree programs or University operations must be reported to SACSCOC.                      | <a href="http://www.sacscoc.org/">http://www.sacscoc.org/</a>                                                                                                                                         |
| 61 | Various reports for SACSCOC accreditation review.      | Southern Association of Colleges and Schools Commission on Colleges (SACSCOC) | Outside Organization |             | Scheduled reviews at 5-year intervals unless more frequent reviews are required.                                                                                                                                                           | At 5- and 10-year intervals, we must provide data and analysis of all operations at the University to support our accreditation.      | <a href="http://www.sacscoc.org/">http://www.sacscoc.org/</a>                                                                                                                                         |
| 62 | Graduation Success Rate                                | National Collegiate Athletic Association (NCAA)                               | Outside Organization | Annually    | June 15, 2016                                                                                                                                                                                                                              | Graduation data scholarship athletes                                                                                                  | <a href="http://www.ncaa.org/">http://www.ncaa.org/</a>                                                                                                                                               |
| 63 | Academic Performance Program                           | National Collegiate Athletic Association (NCAA)                               | Outside Organization | Annually    | 42 days after first day of class each fall                                                                                                                                                                                                 | Academic and Academic Eligibility data on all scholarship athletes                                                                    | <a href="http://www.ncaa.org/">http://www.ncaa.org/</a>                                                                                                                                               |
| 64 | Affirmative Action Planning File and Employee Roster   | South Carolina Human Affairs Commission                                       | State                | Bi-annually | Fall and Spring                                                                                                                                                                                                                            | Affirmative Action Plan support data                                                                                                  | Clemson University Director of Institutional Research, Melissa Welborn                                                                                                                                |
| 65 | Workforce and Applicant Analysis                       | South Carolina Human Affairs Commission                                       | State                | Bi-annually | October and March                                                                                                                                                                                                                          | Workforce Analysis and Applicant Information                                                                                          | Clemson University Director of Institutional Research, Melissa Welborn                                                                                                                                |
| 66 | Vets 4212                                              | Office of Federal Contract Compliance Programs (OFCCP)                        | Federal              | Annually    | September                                                                                                                                                                                                                                  | Information on hiring and employment of veterans                                                                                      | Clemson University Director of Institutional Research, Melissa Welborn                                                                                                                                |
| 67 | Affirmative Action Plan                                | Office of Federal Contract Compliance Programs (OFCCP)                        | Federal              | Annually    | Spring                                                                                                                                                                                                                                     | Affirmative Action Plan support data                                                                                                  | Clemson University Director of Institutional Research, Melissa Welborn                                                                                                                                |
| 68 | CHE 100 Report                                         | SC Commission on Higher Education                                             | State                | Annually    | July 8, 2017                                                                                                                                                                                                                               | Required Tuition and Fees for Full-Time Students for the requested academic year                                                      | Submitted via email to SC Commission on Higher Education                                                                                                                                              |

|    |                                                                                                                                                            |                                                                                       |       |                 |                   |                                                                                                                                                                                                                                                                                                                                                                                                                                                                   |                                                                                     |
|----|------------------------------------------------------------------------------------------------------------------------------------------------------------|---------------------------------------------------------------------------------------|-------|-----------------|-------------------|-------------------------------------------------------------------------------------------------------------------------------------------------------------------------------------------------------------------------------------------------------------------------------------------------------------------------------------------------------------------------------------------------------------------------------------------------------------------|-------------------------------------------------------------------------------------|
| 69 | Academic Fee Calculation Report                                                                                                                            | SC Commission on Higher Education                                                     | State | Annually        | Varies            | Summary of Undergraduate and Graduate tuition revenues, debt service, waivers and abatements, scholarship allowances                                                                                                                                                                                                                                                                                                                                              | Submitted via email to SC Commission on Higher Education                            |
| 70 | CHE 150 Report                                                                                                                                             | SC Commission on Higher Education                                                     | State | Annually        | Varies            | Data needed to produce the calculations for Mission Resource Requirements                                                                                                                                                                                                                                                                                                                                                                                         | Submitted via email to SC Commission on Higher Education                            |
| 71 | Proviso 11.15 - Abatements                                                                                                                                 | SC Commission on Higher Education                                                     | State | Annually        | November 1, 2016  | Total number of out-of-state undergraduate students during prior fiscal year that received abatement of rates pursuant to Section 59-112-70 of the 1976 Code as well as the total dollar amount of abatements received.                                                                                                                                                                                                                                           | Submitted via email to SC Commission on Higher Education                            |
| 72 | Proviso 11.16 - Outstanding Institutional Debt                                                                                                             | SC Commission on Higher Education                                                     | State | Annually        | November 1, 2016  | Data on all outstanding institutional debt for the Institution.                                                                                                                                                                                                                                                                                                                                                                                                   | Submitted via email to SC Commission on Higher Education                            |
| 73 | Request for Matching Gift Funds                                                                                                                            | SC Commission on Higher Education                                                     | State | Annually        | October 30, 2016  | Agency report for matching gift funds under the Academic Incentive Act of 1997                                                                                                                                                                                                                                                                                                                                                                                    | Submitted via email to SC Commission on Higher Education                            |
| 74 | Comprehensive Permanent Improvement Program                                                                                                                | CHE, JBRC, SFAA                                                                       | State | Annually        | March 1, 2017     | Five year plan of all capital projects being proposed for execution by the University. Year 1 requests are for formal approval while years 2-5 are submitted for planning.                                                                                                                                                                                                                                                                                        | Submitted via email to SC Commission on Higher Education                            |
| 75 | Report of all repair and maintenance projects, including restoration and renewal of existing facilities or infrastructure per Proviso 3.5 of the FY15 Act. | SC Commission on Higher Education                                                     | State | Annually        | November 24, 2016 | 1) What was spent in on all repair and maintenance projects, including restoration and renewal of existing facilities or infrastructure, regardless of threshold? Please list projects with expenditures by funding source and include a brief description of the project. 2) What is the amount of repair and maintenance, including restoration and renewal projects, that has been deferred to a subsequent fiscal year and what are the reasons for deferral? | Submitted via email to SC Commission on Higher Education                            |
| 76 | Other Funds Survey                                                                                                                                         | SC Revenue and Fiscal Affairs Office                                                  | State | Annually        | November 15, 2016 | Annual reporting of revenues, expenses, and balances information by state funds.                                                                                                                                                                                                                                                                                                                                                                                  | Submitted via email to SC Revenue and Fiscal Affairs Office, Debbie Cooper          |
| 77 | 3 Year Financial Plan                                                                                                                                      | SC Revenue and Fiscal Affairs Office                                                  | State | Annually        | October 1, 2016   | Estimate planned general fund expenditures for the next three fiscal years.                                                                                                                                                                                                                                                                                                                                                                                       | Submitted via email to SC Revenue and Fiscal Affairs Office, Les Boles              |
| 78 | Actual Expense/Revenue Report                                                                                                                              | Executive Budget Office                                                               | State | Annually        | October 15, 2016  | Actual Expenses and Revenues for the previous fiscal year based on program.                                                                                                                                                                                                                                                                                                                                                                                       | Submitted via email to Executive Budget Office, Budget Analyst (Michael Hughes)     |
| 79 | Notice of Facilities and Administrative Rate Change                                                                                                        | Executive Budget Office - Department of Administration                                | State | As needed       | July 1, 2018      | Send copy of Colleges and Universities Cost Agreement and acknowledgement of rate change                                                                                                                                                                                                                                                                                                                                                                          | Brett Dalton, Clemson University Chief Financial Officer                            |
| 80 | Annual Application for Registration Exemption                                                                                                              | South Carolina Secretary of State                                                     | State | Annually        | November 15, 2016 | Required filing to verify that the University is classified as a "public charity" as a political subdivision and agency of the State                                                                                                                                                                                                                                                                                                                              | Brett Dalton, Clemson University Chief Financial Officer                            |
| 81 | State Closing Package                                                                                                                                      | Comptroller General's Office                                                          | State | Annually        | October 1, 2016   | Required by the Comptroller General's Office to assist in the preparation of the Statewide CAFR                                                                                                                                                                                                                                                                                                                                                                   | Brett Dalton, Clemson University Chief Financial Officer                            |
| 82 | Spending Transparency Report                                                                                                                               | Comptroller General's Office                                                          | State | Updated monthly | Month-end close   | Searchable website containing three plus years of data detailing University expenditures by month or by vendor updated monthly                                                                                                                                                                                                                                                                                                                                    | <a href="https://transpend.app.clemson.edu/">https://transpend.app.clemson.edu/</a> |
| 83 | Quarterly Procurement Reports                                                                                                                              | SFAA                                                                                  | State | Quarterly       | varies            | Procurement activity for reporting period to include sole sources, emergency procurements, contract purchases, etc...                                                                                                                                                                                                                                                                                                                                             | Brett Dalton, Clemson University Chief Financial Officer                            |
| 84 | Quarterly MBE Report                                                                                                                                       | Division Small and Minority Business Contracting and Certification (Governors Office) | State | Quarterly       | varies            | Procurement activity on state certified MBE suppliers                                                                                                                                                                                                                                                                                                                                                                                                             | Brett Dalton, Clemson University Chief Financial Officer                            |

|    |                                                                                                                                  |                                         |         |             |                                                                                                      |                                                                                                                                                                                                                                                                                                                                                                                   |                                                                                                                                                                                                                         |
|----|----------------------------------------------------------------------------------------------------------------------------------|-----------------------------------------|---------|-------------|------------------------------------------------------------------------------------------------------|-----------------------------------------------------------------------------------------------------------------------------------------------------------------------------------------------------------------------------------------------------------------------------------------------------------------------------------------------------------------------------------|-------------------------------------------------------------------------------------------------------------------------------------------------------------------------------------------------------------------------|
| 85 | Class II Landfills per SC Hazardous Waste Management Act Title 44 - Health, Chapter 56                                           | SCDHEC                                  | State   | Annually    | September 1, 2016                                                                                    | Maintain Daily records of the actual weight in tons of waste received; and the particular grid location of the area currently being used. Fiscal year report (July 1 to June 30) due to DHEC September 1 identifying the actual weight in tons or volume in cubic yards of wastes received. Maintain records for 3 years.                                                         | Brett Dalton, Clemson University Chief Financial Officer                                                                                                                                                                |
| 86 | Groundwater Testing and Reporting Requirements per SC Hazardous Waste Management Act Title 44 - Health, Chapter 57               | SCDHEC                                  | State   | Bi-annually | October 2016, April 2017                                                                             | Twice a year (April /October) testing and reporting including a summary of all analytical testing performed, a determination of the technical sufficiency of the monitoring, a determination of groundwater elevations, flow directions and rates.                                                                                                                                | Brett Dalton, Clemson University Chief Financial Officer                                                                                                                                                                |
| 87 | Recovered Materials Processing Facility per S.C. Solid Waste Policy and Management Act of 1991                                   | SCDHEC                                  | State   | Annually    | September 15, 2016                                                                                   | Requires all universities to report their recycling efforts September 15 each year using Re-TRAC.                                                                                                                                                                                                                                                                                 | Brett Dalton, Clemson University Chief Financial Officer                                                                                                                                                                |
| 88 | Safe Water Drinking Act                                                                                                          | SCDHEC                                  | State   | Annually    | July 1, 2016                                                                                         | Various reports including annual summary of all water sampling and violations. Submit to all water customers.                                                                                                                                                                                                                                                                     | Brett Dalton, Clemson University Chief Financial Officer                                                                                                                                                                |
| 89 | Water Use Report per SC Surface Water Withdrawal, Permitting, Use and Reporting Act. Title 49, Chapter 4 of the SC Code of Laws. | SCDHEC                                  | State   | Annually    | January 31, 2017                                                                                     | Monthly water withdrawals from Lake Hartwell. Submit annual report to SCDHEC by January 31. *Beginning January 1, 2011, anyone withdrawing more than 3 million gallons or more in any 1 month from surface waters of SC must obtain a surface water withdrawal permit or, for agricultural withdrawals, register their withdrawal with the Department unless exempt under the Act | Brett Dalton, Clemson University Chief Financial Officer                                                                                                                                                                |
| 90 | NPDES Quarterly Discharge Monitoring Reports per Reg 61-9 Section 122.5                                                          | SCDHEC                                  | State   | Quarterly   | Submit to SCDHEC by the 28th day of the following month (of the last month of the quarter).          | WWTP Discharge Information                                                                                                                                                                                                                                                                                                                                                        | Brett Dalton, Clemson University Chief Financial Officer                                                                                                                                                                |
| 91 | NPDES Annual Discharge Monitoring Reports per Reg 61-9 Section 122.5                                                             | SCDHEC                                  | State   | Annually    | Submit to SCDHEC by the 28th day of the following month (of the last month of the 12 month period).  | WWTP Discharge Information                                                                                                                                                                                                                                                                                                                                                        | Brett Dalton, Clemson University Chief Financial Officer                                                                                                                                                                |
| 92 | NPDES Monthly Discharge Monitoring Reports per Reg 61-9 Section 122.5                                                            | SCDHEC                                  | State   | Monthly     | NPDES Monthly Discharge Monitoring Reports. Submit to SCDHEC by the 28th day of the following month. | WWTP Discharge Information                                                                                                                                                                                                                                                                                                                                                        | Brett Dalton, Clemson University Chief Financial Officer                                                                                                                                                                |
| 93 | USDA Cooperative State Research and Education Centers - SF-425 Annual Report                                                     | United States Department of Agriculture | Federal | Annually    | December 31, 2016                                                                                    | Summary of Federal agricultural research and extension expenditures prepared by the Public Service Activities Financial Office and reviewed by the University Controller's Office                                                                                                                                                                                                 | George Askew, Clemson University Dean of the College of Agriculture, Forestry, and Life Sciences                                                                                                                        |
| 94 | Rule 15c2-12 Disclosures - Revenue Bonds                                                                                         | Securities and Exchange Commission      | Federal | Annually    | February 1, 2017                                                                                     | Required to post a copy of the University's CAFR and an Annual Report for Revenue Bonds to the Municipal Securities Rulemaking Board website accessible to bond holders                                                                                                                                                                                                           | <a href="http://emma.msrb.org/ContinuingDisclosureView/ContinuingDisclosureDetails.aspx?submissionId=ES617245">http://emma.msrb.org/ContinuingDisclosureView/ContinuingDisclosureDetails.aspx?submissionId=ES617245</a> |
| 95 | Rule 15c2-12 Disclosures - Athletics Facilities Revenue Bonds                                                                    | Securities and Exchange Commission      | Federal | Annually    | April 1, 2017                                                                                        | Required to post a copy of the University's CAFR and an Annual Report for Athletic Facilities Revenue Bonds to the Municipal Securities Rulemaking Board website accessible to bond holders                                                                                                                                                                                       | <a href="http://emma.msrb.org/ContinuingDisclosureView/ContinuingDisclosureDetails.aspx?submissionId=EA570736">http://emma.msrb.org/ContinuingDisclosureView/ContinuingDisclosureDetails.aspx?submissionId=EA570736</a> |

|     |                                                                                                                                             |                                                                                  |         |          |                        |                                                                                                                                                                                                                                                                                                                                                                                           |                                                                                                                                                                                                               |
|-----|---------------------------------------------------------------------------------------------------------------------------------------------|----------------------------------------------------------------------------------|---------|----------|------------------------|-------------------------------------------------------------------------------------------------------------------------------------------------------------------------------------------------------------------------------------------------------------------------------------------------------------------------------------------------------------------------------------------|---------------------------------------------------------------------------------------------------------------------------------------------------------------------------------------------------------------|
| 96  | National Science Foundation - Higher Education Research and Development Survey                                                              | National Science Foundation                                                      | Federal | Annually | January 31, 2017       | Information on R&D expenditures by field of research and source of funds; types of research and expenses and headcounts of R&D personnel.                                                                                                                                                                                                                                                 | Tanju Karanfil, Clemson University Vice President for Research                                                                                                                                                |
| 97  | Pooled Fringe Rate Submission                                                                                                               | Department of Health and Human Services                                          | Federal | Annually | December 31, 2016      | Projected salaries and expenses by pooled fringe category, each of which is compiled of several benefit program codes, for the submission year. These projections are based two-year prior actuals plus adjustments for expected changes. (i.e. FY17 is based on FY15)                                                                                                                    | Approved pooled fringe rates found on page 3 of the Colleges and Universities Cost Agreements <a href="http://www.clemson.edu/finance/controller/rates/">http://www.clemson.edu/finance/controller/rates/</a> |
| 98  | Clean Air Act- mandatory greenhouse gas (GHG) reporting requirements for owners and operators of certain facilities that directly emit GHG. | EPA                                                                              | Federal | Annually | March 31, 2017         | Effective 12/29/09, the university is required to submit an annual (calendar year) report on greenhouse gas emissions to the EPA.                                                                                                                                                                                                                                                         | Brett Dalton, Clemson University Chief Financial Officer                                                                                                                                                      |
| 99  | Disposition of PCBs and PCB Items per the Toxic Substances Control Act                                                                      | EPA                                                                              | Federal | Annually | July 15, 2016          | 15 U.S.C. 2607; 40 C.F.R. 761.180: A written annual document log of the disposition of PCBs and PCB items must be prepared for each facility by July 1st, covering the previous calendar year (January through December). The written annual report, which summarizes the records and annual document log shall be submitted to the EPA Regional Administrator by July 15th of each year. | Brett Dalton, Clemson University Chief Financial Officer                                                                                                                                                      |
| 100 | Underground Storage Tank annual registration per the Resource Conservation and Recovery Act                                                 | EPA                                                                              | Federal | Annually | September 1, 2016      | Underground Storage Tank annual registration and postings.                                                                                                                                                                                                                                                                                                                                | Brett Dalton, Clemson University Chief Financial Officer                                                                                                                                                      |
| 101 | 117.74 - Fines & Fees Report                                                                                                                | Senate Finance Committee & House Ways and Means Committee                        | State   | Annually | September 1, 2016      | All aggregate amounts of fines and fees that were charged and collected by the state agency in the prior fiscal year.                                                                                                                                                                                                                                                                     | Located on Agency's website: <a href="http://www.clemson.edu/finance/controller/resource.html">www.clemson.edu/finance/controller/resource.html</a>                                                           |
| 102 | 117.14 & 104.2 - Unfunded FTEs and Vacant FTEs                                                                                              | Executive Budget Office & House Ways and Means Committee                         | State   | Annually | September 30, 2016     | Personnel Service Reconciliation - FTEs                                                                                                                                                                                                                                                                                                                                                   | Submit via email                                                                                                                                                                                              |
| 103 | 117.34 Debt Collection Reports                                                                                                              | Senate Finance Committee, House Ways and Means Committee and Inspector General   | State   | Annually | February 28, 2016      | Reporting outstanding debt and all methods the agency used to collect the debt.                                                                                                                                                                                                                                                                                                           | Submitted via email                                                                                                                                                                                           |
| 104 | 117.58 - Year-End Financial Statements                                                                                                      | Comptroller General                                                              | State   | Annually | October 1, 2016        | Final Audited Financial Statement/Report                                                                                                                                                                                                                                                                                                                                                  | <a href="http://www.clemson.edu/finance/controller/cafr/">http://www.clemson.edu/finance/controller/cafr/</a>                                                                                                 |
| 105 | Proviso 118.7 - Prohibition of Public Funded Lobbyists                                                                                      | State Ethics Commission                                                          | State   | Annually | April 4, 2017          | Completion of Lobbyists' Principal Certification Form - Disclosure Report                                                                                                                                                                                                                                                                                                                 | Submitted via email                                                                                                                                                                                           |
| 106 | Tower Proviso - 101.4. (BCB: Wireless Communications Tower)                                                                                 | Previously Budget & Control Board; assume would go to SFAA now                   | State   | Annually | September/October 2016 | Non-proviso tower revenues for state owned towers, buildings, water towers, and state owned property                                                                                                                                                                                                                                                                                      | Submitted via email                                                                                                                                                                                           |
| 107 | 117.26 - Agency Travel Report                                                                                                               | Senate Finance Committee, House Ways and Means Committee & Statehouse Press Room | State   | Annually | September 2, 2016      | Minimum of top 10% of employees of whom travel expenses and registration fees were paid within the agency, not to exceed the top twenty-five travelers                                                                                                                                                                                                                                    | Located on State Comptroller's website: <a href="http://www.cg.sc.gov/publicationsandreports/pages/travelreports.aspx">www.cg.sc.gov/publicationsandreports/pages/travelreports.aspx</a>                      |
| 108 | Comprehensive Annual Financial Report (CAFR)                                                                                                | Comptroller General's Office                                                     | State   | Annually | October 1, 2016        | Audited financial statements of the University and its Component Units                                                                                                                                                                                                                                                                                                                    | <a href="http://www.clemson.edu/finance/controller/cafr/">http://www.clemson.edu/finance/controller/cafr/</a>                                                                                                 |
| 109 | OMB Circular A-133 Reports                                                                                                                  | Comptroller General's Office                                                     | State   | Annually | October 1, 2016        | Audited report on the University's Schedule of Expenditures of Federal Awards. Also required by various Federal Agencies and Other Entities                                                                                                                                                                                                                                               | <a href="http://osa.sc.gov/Reports/stateengagements/Documents/YearEnded2015/H1215%20(Single%20Audit).pdf">http://osa.sc.gov/Reports/stateengagements/Documents/YearEnded2015/H1215%20(Single%20Audit).pdf</a> |
| 110 | Independent Accountant's Report on Application of Agreed Upon Procedures - Clemson University Intercollegiate Athletics Program             | National Collegiate Athletics Association (NCAA)                                 | Other   | Annually | October 1, 2016        | Agreed Upon Procedures Report required by the NCAA to include the Statement of Revenues, Expenditures and Transfers for the University's Intercollegiate Athletics Program                                                                                                                                                                                                                | Dan Radakovich, Clemson University Director of Athletics                                                                                                                                                      |



|     |                                                                                                                                                                                                 |                                                     |         |          |                  |                                                                                         |                                                                                                 |
|-----|-------------------------------------------------------------------------------------------------------------------------------------------------------------------------------------------------|-----------------------------------------------------|---------|----------|------------------|-----------------------------------------------------------------------------------------|-------------------------------------------------------------------------------------------------|
| 111 | Report on Supplementary Information - Schedule of Municipal Court Fines, Assessments and Remittances and Schedule of Victim Services, Activities, Funds Allocated, Expended and Carried Forward | State Treasurer's Office                            | State   | Annually | October 1, 2016  | Required by State Victim's Rights Laws                                                  | Brett Dalton, Clemson University Chief Financial Officer                                        |
| 112 | Integrated Post-Secondary Education Data System (IPEDS) - Finance Survey                                                                                                                        | US Department of Education                          | Federal | Annually | December-April   | Prepared by the Controller's Office and submitted each Spring                           | <a href="http://nces.ed.gov/ipeds/Home/UseTheData">http://nces.ed.gov/ipeds/Home/UseTheData</a> |
| 113 | Equity in Athletics Disclosure Act (EADA) Report                                                                                                                                                | US Department of Education                          | Federal | Annually | October 28, 2016 | Athletic participation, staffing, and revenues and expenses, by men's and women's teams | Dan Radakovich, Clemson University Director of Athletics                                        |
| 114 | Southern Association of Colleges and Schools Commission on Colleges (SACSCOC) - Financial Profile                                                                                               | Southern Association of Colleges and Schools (SACS) | Other   | Annually | June 15, 2017    | Required by accreditation agency                                                        | Brett Dalton, Clemson University Chief Financial Officer                                        |
| 115 | National Collegiate Athletics Association (NCAA) - Membership Financial Data                                                                                                                    | National Collegiate Athletics Association (NCAA)    | Other   | Annually | January 15, 2017 | Prepared and submitted by the Athletics Department                                      | Dan Radakovich, Clemson University Director of Athletics                                        |

**Agency Name:** **Clemson University**

**Fiscal Year 2016-2017  
Accountability Report**

**Agency Code:** **H12**      **Section:** **014**

**External Review Template**

| <b>Item</b>                                         | <b>Name of Entity Conducted External Review</b>             | <b>Type of Entity</b> | <b>External Review Timeline (MM/DD/YYYY to MM/DD/YYYY)</b> | <b>Method to Access the External Review Report</b> |
|-----------------------------------------------------|-------------------------------------------------------------|-----------------------|------------------------------------------------------------|----------------------------------------------------|
| Financial Statements                                | Elliott Davis Decosimo                                      | Outside Organization  | 07/01/2016 to 06/30/2017                                   | clemson.edu/finance/controller/cafr                |
| A-133 Audit                                         | Elliott Davis Decosimo                                      | Outside Organization  | 07/01/2016 to 06/30/2017                                   | Controller, Steve Crump                            |
| Athletics                                           | Elliott Davis Decosimo                                      | Outside Organization  | 07/01/2016 to 06/30/2017                                   | Athletic Director, Daniel Radakovich               |
| Construction Closeout Review of Littlejohn Coliseum | Fort Hill Associates, LLC                                   | Outside Organization  | Reports dated January 6, 2017 and May 27, 2017             | Project Manager Director, John McEntire            |
| 2014, Form 941 Employment Tax Exam                  | Internal Revenue Service                                    | Federal               | Concluded November, 2016                                   | N/A (Agency contact is CU Controller, Steve Crump) |
| Payroll Security Risk Assessment                    | Protiviti                                                   | Outside Organization  | Concluded May 18, 2017                                     | Cathy Tillett/Hal Stone                            |
| Bond Rating                                         | Standard & Poor's, Moody's Investor Services, Fitch Ratings | Outside Organization  | Ongoing; Most recent assessment - December 2016            | Rick Petillo                                       |