

<b>AGENCY NAME:</b>	South Carolina Forestry Commission		
<b>AGENCY CODE:</b>	P120	<b>SECTION:</b>	043

**Fiscal Year 2018–2019  
Accountability Report**

**SUBMISSION FORM**

<b>AGENCY MISSION</b>	The mission of the South Carolina Forestry Commission is to protect, promote, enhance, and nurture the woodlands of SC, and to educate the public about forestry issues, in a manner consistent with achieving the greatest good for its citizens.
-----------------------	----------------------------------------------------------------------------------------------------------------------------------------------------------------------------------------------------------------------------------------------------

<b>AGENCY VISION</b>	Across all ownerships, South Carolina’s forest resources are managed sustainably to support an expanding forest products manufacturing industry while providing environmental services such as clean air, clean water, recreation and wildlife habitat.
----------------------	---------------------------------------------------------------------------------------------------------------------------------------------------------------------------------------------------------------------------------------------------------

Does the agency have any major or minor recommendations (internal or external) that would allow the agency to operate more effectively and efficiently?

	Yes	No
<b>RESTRUCTURING RECOMMENDATIONS:</b>	<input type="checkbox"/>	<input checked="" type="checkbox"/>

Is the agency in compliance with S.C. Code Ann. § 2-1-230, which requires submission of certain reports to the Legislative Services Agency for publication online and the State Library? See also S.C. Code Ann. § 60-2-30.

	Yes	No
<b>REPORT SUBMISSION COMPLIANCE:</b>	<input checked="" type="checkbox"/>	<input type="checkbox"/>

<b>AGENCY NAME:</b>	<b>South Carolina Forestry Commission</b>		
<b>AGENCY CODE:</b>	<b>P120</b>	<b>SECTION:</b>	<b>043</b>

Is the agency in compliance with various requirements to transfer its records, including electronic ones, to the Department of Archives and History? See the Public Records Act (S.C. Code Ann. § 30-1-10 through 30-1-180) and the South Carolina Uniform Electronic Transactions Act (S.C. Code Ann. § 26-6-10 through 26-10-210).

	<b>Yes</b>	<b>No</b>
<b>RECORDS MANAGEMENT COMPLIANCE:</b>	<input checked="" type="checkbox"/>	<input type="checkbox"/>


Is the agency in compliance with S.C. Code Ann. § 1-23-120(J), which requires an agency to conduct a formal review of its regulations every five years?


	<b>Yes</b>	<b>No</b>
<b>REGULATION REVIEW:</b>	<input checked="" type="checkbox"/>	<input type="checkbox"/>

Please identify your agency's preferred contacts for this year's accountability report.

	<u><i>Name</i></u>	<u><i>Phone</i></u>	<u><i>Email</i></u>
<b>PRIMARY CONTACT:</b>	Doug Wood	(803) 896-8820	<a href="mailto:dwood@scfc.gov">dwood@scfc.gov</a>
<b>SECONDARY CONTACT:</b>	Tom Patton	(803) 896-8849	<a href="mailto:tpatton@scfc.gov">tpatton@scfc.gov</a>

I have reviewed and approved the enclosed FY 2018–2019 Accountability Report, which is complete and accurate to the extent of my knowledge.

<b>AGENCY DIRECTOR (SIGN AND DATE):</b>		Sept. 13, 2019
<b>(TYPE/PRINT NAME):</b>	Scott L. Phillips	

<b>BOARD/CMSN CHAIR (SIGN AND DATE):</b>		Sept. 13, 2019
<b>(TYPE/PRINT NAME):</b>	Walt McPhail	

<b>AGENCY NAME:</b>	<b>South Carolina Forestry Commission</b>		
<b>AGENCY CODE:</b>	<b>P120</b>	<b>SECTION:</b>	<b>043</b>

### **AGENCY'S DISCUSSION AND ANALYSIS**

The SC Forestry Commission was created in 1927 with its General Duties defined in State Code 48-23-90. In summary, the Code requires the agency to make an annual report to the General Assembly on *“forest conditions ... including recommendations to the public as to reforestation. ... to prevent, control and extinguish fires, including the enforcement of ... laws pertaining to the protection of the forests and woodlands .... ... give such advice, assistance and cooperation to private owners of land and promote ... appreciation by the public of the advantages of forestry and the benefits ... ... cooperate with the federal government in the distribution of funds allotted to the State for forestry ...”* To meet its statutory requirements, the Forestry Commission created a mission, vision, and values statement and an associated Strategic Plan to direct its operations. A summary version of the mission statement is to *“Protect and develop the forest resources of South Carolina.”*

Commission staff and the agency’s Board of Commissioners conduct a detailed review and recording of the agency’s progress toward attaining Strategic Plan goals on a quarterly basis. This action ensures that agency operations are properly aligned with its mission and informs the organization of its progress, direction, and purpose. This alignment also ensures that the Commission continues to effectively support the growth of the state’s forest industry to levels beyond its current \$21 billion economic impact and 84,000+ jobs, making it the #2 manufacturing segment in the state in terms of jobs and labor income (Fig. 1-3). Beyond forestry’s economic impact, forests cover two-thirds of the state at 12.9 million acres, enhancing the state’s quality of life.

The Commission has five primary goals identified in its AR that are aligned with its Mission, Strategic Plan, and statutory requirements. These goals are Develop the Resource, Protect the Resource, Manage the Resource, Raise Awareness about the Resource, and Prepare to Meet Future Demands. For each goal, the agency has identified strategies, objectives, and performance measures to ensure their accomplishment.

The AR provides the agency with the opportunity to submit a “Discussion and Analysis” section that comments on (1) Factors affecting the agency’s performance during the past year, (2) Performance efforts and results, and (3) Plans to improve performance. This comment section appears below and is organized by the agency’s five goals.

**Goal 1: Develop the Resource.** Developing the resource by increasing timber production and expanding timber markets is critical to private landowner financial success and environmental care as well as for increasing forest product manufacturing job numbers.

**Factors affecting performance in the past year:**

- **Positive factors** – SC’s accurate Forest Inventory & Analysis (FIA) timber inventory and record level of pine sawtimber support economic development. A new public-private partnership with ArborGen focuses agency efforts on tree improvement while still providing for high quality seedlings for South Carolina landowners. Recent budget appropriations provided funding to allow agency to address compensation issues in critical areas.
- **Negative factors** – The difficulty recruiting entry-level forester positions is impacting our FIA program. Decreasing supply of pine pulpwood, reduced levels of tree planting and difficulty filling a key tree improvement position.

**Performance efforts and results:**

- Implemented a new pay plan for foresters that has significantly reduced turnover rates for foresters (down to 18% in FY19 from 40% in FY18). We are still having issues recruiting new foresters into these positions, with the time to fill vacancies exceeding 6 months in the FIA program. Recruitment and retention of FIA foresters is critical for the agency to maintain an up-to-date and accurate forest inventory, which supports economic development.
- FIA plot production was 91% of the target for FY19. This is a 7% improvement from FY18, and accuracy scores remain very high (>96%).
- Approximately \$104 million in capital investment projects announced in FY19. Announced projects will create 185 new jobs. The largest announcement was in Georgetown County where Interfor plans to invest \$61 million to upgrade its sawmill operation.
- The 2017 Timber Production Output (TPO) survey results were released for South Carolina by the USDA Forest Service. Total timber production from South Carolina forests increased 2.3% from 2015 to 2017 and was valued at more than \$1.09 billion (Fig. 2). The agency completed data collection for the 2018 TPO survey.

<b>AGENCY NAME:</b>	<b>South Carolina Forestry Commission</b>		
<b>AGENCY CODE:</b>	<b>P120</b>	<b>SECTION:</b>	<b>043</b>

- Produced and sold 2.3 million seedlings during FY19. Numbers are lower than in the previous year, as this was a transition year for the new public-private partnership with Arborgen at Taylor Nursery. All loblolly and longleaf seedlings came from the best genetic stock available. A survey of seedling customers revealed high satisfaction levels with customer service (94%), which is very positive, given the transition with Arborgen this year.
- Continued to grow the SC Forest Products marketing program. A trade mission to Costa Rica was conducted with the goal of developing new markets for wood products produced in SC. The Commission produced the 2017 Costa Rica Market Report to identify potential markets for SC-manufactured forest products. Two local forest product companies participated in the trip. Preliminary results seem promising that at least one new business relationship will be developed.
- Completed an industry export report that determined the value of forest product exports from South Carolina to be \$1.41 billion.
- Rejoined the North Carolina State Tree Improvement Cooperative as a full member. This allows the agency to continue to provide loblolly pine seed with the best available genetics and ensure that SC landowners have access to the best available tree seedlings for planting in the future.
- Edgar Arias, SCFC Marketing Specialist, is the 2019 chairman of the S.C. International Trade Coalition (SCITC), an organization made up of associations and organizations that provide export services to companies across the state of South Carolina. Members meet regularly to collaborate on export training events, international trade missions, and company outreach opportunities. The Forestry Commission organized and hosted SCITC's Spring Retreat Meeting on Thursday, May 23rd, 2019 at Harbison State Forest Environmental Education Center.

**Plans to improve performance:**

- Hire tree improvement position to meet requirements for tree improvement co-op participation.
- Continue to grow the SC Forest Products Marketing Program by publishing 1-2 market reports annually and leading SC companies that are interested in growing their export markets on trade missions to key countries. Develop success stories of companies assisted to grow their markets internationally.

**Goal 2: Protect the Resource.** Protecting the state's forest resource, the public, and firefighters is a critical component of the agency's mission.

**Factors affecting performance in the past year:**

- Positive factor – The agency continues to increase professional development of firefighters through additional training opportunities. Recent budget appropriations provided funding to allow agency to address compensation issues in critical areas and procure 12 new enclosed-cab bulldozer firefighting units in FY19. Currently 56% of frontline firefighting bulldozers are the safer enclosed-cab units. One million dollars of recurring funding was included in the FY20 budget appropriation to address the annual need for firefighting equipment.
- Negative factors - Reduced firefighting capacity - inexperienced personnel and 28% (45 of 160) of the frontline firefighting bulldozers exceeding safe service life (Fig. 4). Reduced capacity lessens the agency's ability to protect the forest resource, structures, the public and firefighters. Fire Management Officer capacity has been reduced by almost 50% since 2001.
  - Increasing turnover rates and difficulty recruiting new firefighters (bulldozer operators) due to noncompetitive wages are impacting our ability to respond to wildfires. Currently 9% (15 of 160) of the bulldozer operator positions are vacant with the average position being vacant nearly 6 months. Two of these positions have been vacant in excess of one year.
  - Act 273's \$1.8 million annual funding and the new \$1 million recurring state funding is insufficient to fill a \$3.8 million annual need for firefighting equipment.
  - Aircraft used for wildfire detection and suppression are exceeding safe service life.
  - More complex wildfire control situations due to increased urbanization and lack of capacity.

**Performance efforts and results:**

- Implemented a new pay plan for Dispatchers and Fire Management Officers that has significantly reduced turnover rates for dispatchers (down to 20% in FY19 from 24% in FY18) and increased retention of Fire Management Officers.

<b>AGENCY NAME:</b>	<b>South Carolina Forestry Commission</b>		
<b>AGENCY CODE:</b>	<b>P120</b>	<b>SECTION:</b>	<b>043</b>

- The agency purchased 12 safer enclosed-cab dozers, toward the 160 target, in FY19. However, the number of dozer units exceeding the 15-year safe service life did not change. The agency needs to procure 10-12 dozer units each year based on the 15-year safe service life for this firefighting equipment (Fig. 4).
- Average wildfire response time increased to 37.9 minutes due to firefighter vacancies and the resulting larger coverage areas. This is higher than the 35-minute target and 6% above the five-year average (Fig. 5).
- Conducted joint training exercise with the SC National Guard (SCNG) on Sand Hills State Forest. The training served multiple purposes: it helped SCNG pilots achieve certification to perform water drops in support the SCFC on wildfire suppression, and it trained SCFC firefighters how to communicate efficiently and effectively with aircraft used to suppress wildfires. Two UH-60 Blackhawk helicopters with SCNG personnel, 25 SCFC firefighters, and personnel from SC State Fire Marshal’s office, local fire departments, US Fish and Wildlife Service, and US Forest Service participated in the two-day training.
- Expanded the agency’s fire weather network by purchasing two additional remote automated weather stations to improve predictions related to wildfire occurrence and severity.
- Provided training for loggers and conducted BMP exams to aid in ensuring compliance. Compliance remains very high at 97%.
- Provided education programs and outreach, such as FireWise, which mitigates community wildfire risks.

**Plans to improve performance:**

- Increase wildfire prevention efforts to reduce fire occurrence, including commissioning of additional law enforcement officers and the promotion of active forest management. Law enforcement and active forest management are two of the most effective fire prevention tools available.
- Implement a new pay plan for dozer operators and support positions as part of recruitment and retention efforts.
- Prioritize equipment replacement for operator and public safety. Request \$1 million recurring funding for firefighting equipment. Request non-recurring funding to replace aircraft that are exceeding safe service life.
- Request funding for a fire support position and 2 pilots to provide forward-looking fire weather outlooks, fire intelligence information, and to provide aerial detection and suppression support for wildfires. Request 2 fire dispatcher positions to bolster 24/7 fire dispatch operations and provide for succession planning needs.
- Request funding for a Geographic Information Systems (GIS) Analyst to improve use of spatial data for forest protection efforts.
- Strengthen safety and training programs for agency personnel and cooperators.

**Goal 3: Manage the Resource.** Providing forest management assistance to private landowners, management of state forests for multiple uses, and promotion of healthy urban forests are critical components of the agency’s mission to support the state’s economy while protecting water quality, improving wildlife habitat, and providing other environmental benefits.

**Factors affecting performance in the past year:**

- Positive factor – High level of landowner satisfaction with the quality of assistance provided. Recent budget appropriations provided funding to allow agency to address decreased federal funding and compensation issues in critical areas.
- Negative factors - Lack of capacity – The current capacity of the agency does not allow the agency to provide technical assistance and outreach to family forest owners as we did historically or to the level that we feel is appropriate given current forest conditions and trends (Fig. 6). Foresters have been assigned more fire control duties due to inadequate Fire Management Officer capacity, further reducing capacity to provide landowner assistance. Difficulty recruiting entry-level forester positions is exacerbating the issue.  
-Insufficient cost-share funding for reforestation through the Forest Renewal Program has resulted in a backlog of greater than 1 year, decreasing the productive potential of family-owned forestlands. Insufficient reforestation is exacerbating the decreasing supply of pine pulpwood and threatens economic development efforts.

**Performance efforts and results:**

- The agency implemented a new pay plan for foresters that has significantly reduced turnover rates for foresters (down to 18% in FY19 from 40% in FY18). We are still having issues recruiting new foresters into these positions

<b>AGENCY NAME:</b>	<b>South Carolina Forestry Commission</b>		
<b>AGENCY CODE:</b>	<b>P120</b>	<b>SECTION:</b>	<b>043</b>

with the time to fill vacancies exceeding 20 months in some locations. Recruitment and retention of foresters is critical for the agency to provide valuable services to family forest owners to support active forest management and wildfire suppression efforts.

- The agency assisted 2,013 landowners during FY19. This is 19% below the current desired target and more than 40% below historical metrics. In FY01 the agency assisted 3,370 landowners. Shortfall is due to reduced capacity and recruitment/retention issues (Fig. 6).
- Achieved a 95% customer satisfaction level for forest management assistance for FY19 (94% in FY18).
- The State Forest system generated \$3.8 million in total revenue (\$904,496 net revenue) from the sale of forest products and paid nearly \$950,000 to counties in which they operate. The agency operates its State Forests 100% from revenue generated by the management of these properties using no state-appropriated funds to support their operation. The agency’s ability to operate the State Forests without state funding, while providing 25% of its gross proceeds to the counties in which they are located, illustrates the productive capacity of actively managed forests and the good stewardship of this agency. Since 1990, the SCFC has paid more than \$15 million to schools in the counties in which the State Forests are located (Fig.7).
- Harvest scheduling models for State Forests are being used to ensure that these properties continue to be managed on a sustainable basis and that revenue production is optimized. Dual third-party certification through the American Tree Farm System and the Sustainable Forestry Initiative ensure that State Forests are managed to the highest standards.
- The Urban and Community Forestry Program’s outreach served an estimated 1.6 million citizens. A significant project completed by this program was the tree-planting project at the Marion Hike-Bike Trail as part of Governor McMaster’s Floodwater Commission Workday in June. The project demonstrated how trees can mitigate flooding and stormwater issues in an area of the Marion community that received significant flooding from Hurricane Florence in 2018.

**Plans to improve performance:**

- Request funds for eight additional positions to increase capacity for landowner services and outreach while also increasing firefighting capacity. Requested positions will be crucial for agency succession planning efforts.
- Strengthen training programs for agency personnel to deliver services more efficiently.
- Continue to refine harvest scheduling model for State Forests to provide a more accurate estimate of revenue.

**Goal 4: Raise Awareness about the Resource.** Raising awareness among decision-makers and the public about the environmental and economic benefits of active forest management is necessary to acquire needed legislation/policies, garner public support, and support private landowner timber production.

**Factors affecting performance in the past year:**

- Positive factors - Small but talented and dedicated staff in the agency’s Public Information Division.
  - Efficient use of website, social media and collaboration with partners allows broad distribution of messaging at low cost.
  - Technical staff collaborates with design staff to create high-impact publications.
- Negative factor - Understaffing in the Public Information Division creates the lack of specialization needed for a more robust integrated marketing communications program, which also leads to missed opportunities for public relations and outreach.

**Performance efforts and results:**

- Agency staff conducted forestry education programs reaching nearly 8,200 participants during FY19. This is a 67% increase from FY18.
- More than 830,400 visits to the agency website during FY19.
- The agency won – for the fourth year in a row – one of the SC State Library’s 12 Notable Document Awards for its publication, “Forest Trees of South Carolina.” Only 1 percent of all South Carolina state agency publications are recognized as notable documents each year.
- SCFC held its first major outreach program for secondary students April 11-14, 2019 at the SC Future Farmers of America (FFA) Center in Cherry Grove. Thirty agriculture education teachers/FFA advisors and students attended the week-long forestry camp to practice forestry skills and learn about the importance of forestry in our state. SC

<b>AGENCY NAME:</b>	<b>South Carolina Forestry Commission</b>		
<b>AGENCY CODE:</b>	<b>P120</b>	<b>SECTION:</b>	<b>043</b>

FFA provided the site, lodging and food, and was responsible for other logistics while the SCFC provided the educational programming. The Forestry Commission plans to hold the camp annually.

- The SCFC made significant strides this year in ramping up efforts to shed a positive light on forestry in SC. Examples include:
  - Governor McMaster proclaimed March 2019 as Prescribed Fire Awareness Month and SCFC employees stepped up to the challenge of raising awareness about the benefits of prescribed fire. More than a dozen newspaper articles highlighted various prescribed burns around the state, and at least five television news stations aired stories as a result of the concerted effort to promote prescribed burning.
  - To highlight National Invasive Species Awareness week the agency developed a social media campaign that included two videos highlighting invasive species, control techniques, and tree planting. The Bradford pear video was viewed more than 21,000 times on the agency Facebook page and spawned news stories in The State, Greenville News, Charlotte Observer, and even USA Today. It also generated television news coverage in every major market in SC.
- Wood Magic Forest Fair continues to be a great way to educate the next generation. Students participating in the program consistently show a significant gain in knowledge as documented by post-visit test scores. This year's aggregate gain in forestry knowledge among Wood Magic students was 83%.

**Plans to improve performance:**

- Request one additional position and operating funds to increase communications and outreach capacity to promote the advantages of forestry and the benefits of active forest management to landowners and the public.
- Website redesign will be a top priority for FY2020.
- Leverage partnerships to amplify messaging.

**Goal 5: Prepare to Meet Future Demands.** Employees are the Commission's most valuable resource. Through effective Human Resource practices, the agency is preparing to meet the future needs of the citizens of SC.

**Factors affecting the agency's performance in the past year:**

- Positive factors – Increased appropriations have enabled the restoration of critical positions, over the last few years, that allow the agency to better serve the forestry community of SC. Recent budget appropriations provided funding to allow agency to address compensation issues in critical areas, improving recruitment and retention efforts.
- Negative factors - Limited capacity in critical program areas is causing firefighters and foresters to cover greater territory, increasing response time, fire size, and wildfire damage risk while reducing landowner assistance, wildfire prevention and outreach (Fig. 5, 6).
  - Difficulty recruiting Forester and Forestry Technician positions is exacerbating capacity issues.
  - Inadequate IT staffing and operating funds to implement State Information Security initiatives, reduce risks and meet agency operational requirements.
  - Inadequate FTEs for needed workforce/succession planning and implementation. Thirty-one percent of the agency's workforce is eligible to retire within 5 years.

**Performance efforts and results:**

- Implemented a new pay plans for Foresters, Dispatchers and Fire Management Officers that has significantly reduced turnover rates for foresters (down to 18% in FY19 from 40% in FY18) and dispatchers (down to 20% in FY19 from 24% in FY18) and increased retention of Fire Management Officers. Results from the FY18 employee engagement survey indicated that employees were extremely dissatisfied with compensation, and noncompetitive salaries are one of the agency's biggest barriers to recruitment and retention.
- Working with SC Public Employee Benefit Authority (PEBA) the agency placed Project Foresters, Unit Foresters, Assistant Regional Foresters, Regional Foresters and Fire Staff, all of which are registered firefighter positions, into the Police Officers Retirement System (PORS) as part of the agency's recruitment and retention efforts. Previously these positions were in the State Retirement System.
- Developed and implemented an Anti-Harassment and Anti-Discrimination Policy for the agency and conducted training on unlawful harassment and discrimination for all agency employees to support the policy. Adopting an anti-harassment/anti-discrimination policy was an important step as we strive to make the Commission a more

<b>AGENCY NAME:</b>	<b>South Carolina Forestry Commission</b>		
<b>AGENCY CODE:</b>	<b>P120</b>	<b>SECTION:</b>	<b>043</b>

desirable workplace. Having a policy in place sets an expectation for employee behavior and provides a process for people to use if they feel they have been harassed or discriminated against. It also provides a process to handle false or malicious complaints.

- Updated and adopted two new policy statements –Affirmative Action Policy Statement and Drug-Free Workplace Act Policy Statement.
- Revised the agency’s Hours Worked/Overtime Policy and Procedure as well as the agency’s Fire Suppression Readiness Plan Policy and Procedure.

**Plans to improve performance:**

- Implement pay plans and career paths for frontline firefighters and support staff that will improve recruitment and retention, which will enable the agency to fulfill our mission of protecting and developing the forest resources of SC.
- Implement an aggressive intern/co-op program for forester and other positions where we have recruiting issues.
- Leverage results from the FY18 employee engagement survey to increase employee engagement and create an environment where all employees feel valued and are motivated to help the SCFC be successful.
- Pilot new firefighting positions using existing FTEs that will mitigate limited capacity of Fire Supervisor positions while providing training and experience needed for succession planning purposes.
- Request funding for a Legislative Liaison position to be the agency’s primary point of contact for legislative matters and to better serve the members of the General Assembly, two IT positions to provide minimum needed capacity and aid implementing State Information Security initiatives, and 15 other critical positions, noted in previous sections of this report
- Strengthen safety and training programs for agency employees to ensure they are prepared to meet the current and future demands of our mission.

**SUMMARY AND CONCLUSION**

This Accountability Report fulfills its two primary purposes: providing information supporting the agency’s budget and providing a basis for Agency Head Salary Commission decisions. The report describes the agency’s Strategic Plan contents, performance measures, and outcomes and has linked program area attributes to key financial and performance measures as required by statute. The Commission appreciates this opportunity to document that the agency understands its legal mandates, meets its requirements, documents current outcomes, and plans to ensure successful future outcomes.

In summary, the agency’s job #1 continues to be the safety of employees and the public that they serve and protect. To meet this goal, staffing and training must be adequate (Goal 5). Staff must also have adequate quantities of safe, reliable equipment. Budget requests are designed to ensure safe working conditions for employees and living conditions for the public. Another top priority is the satisfaction and care of agency customers, the citizens of South Carolina. Meeting this objective requires adequate funding and highly qualified, well trained employees that meet individual citizens’ needs as well as the overarching need to protect the forest resource and retain and increase forest industry job numbers statewide (Goals 1-5). Adequate funding and sound management guided by this AR will ensure that the agency meets these highest priority objectives and supporting ones and accomplishes its statutory duties to *“Protect and develop the forest resources of South Carolina.”*

**Risk Assessment and Mitigation Strategies**

**The results of the agency failing to accomplish its mission of “Protecting and developing the state’s forest resources” would be as follows:**

The most negative impact from a failure to protect the forest resource from wildfires would be uncontrolled wildfires that would destroy forests, structures, and life, in turn resulting in a cascade of negative effects. Among these would be the loss of timber resources and investment returns for private landowners; decline of forest product manufacturing capacity and therefore jobs; wildlife habitat destruction; impaired water quality; soil erosion, lost recreational opportunities and revenue; increased timber theft and fraud on private lands; destruction of homes and businesses, and deaths.

The most negative impact from a failure to develop the forest resource would be a decline in forest industry retention



<b>AGENCY NAME:</b>	<b>South Carolina Forestry Commission</b>		
<b>AGENCY CODE:</b>	<b>P120</b>	<b>SECTION:</b>	<b>043</b>

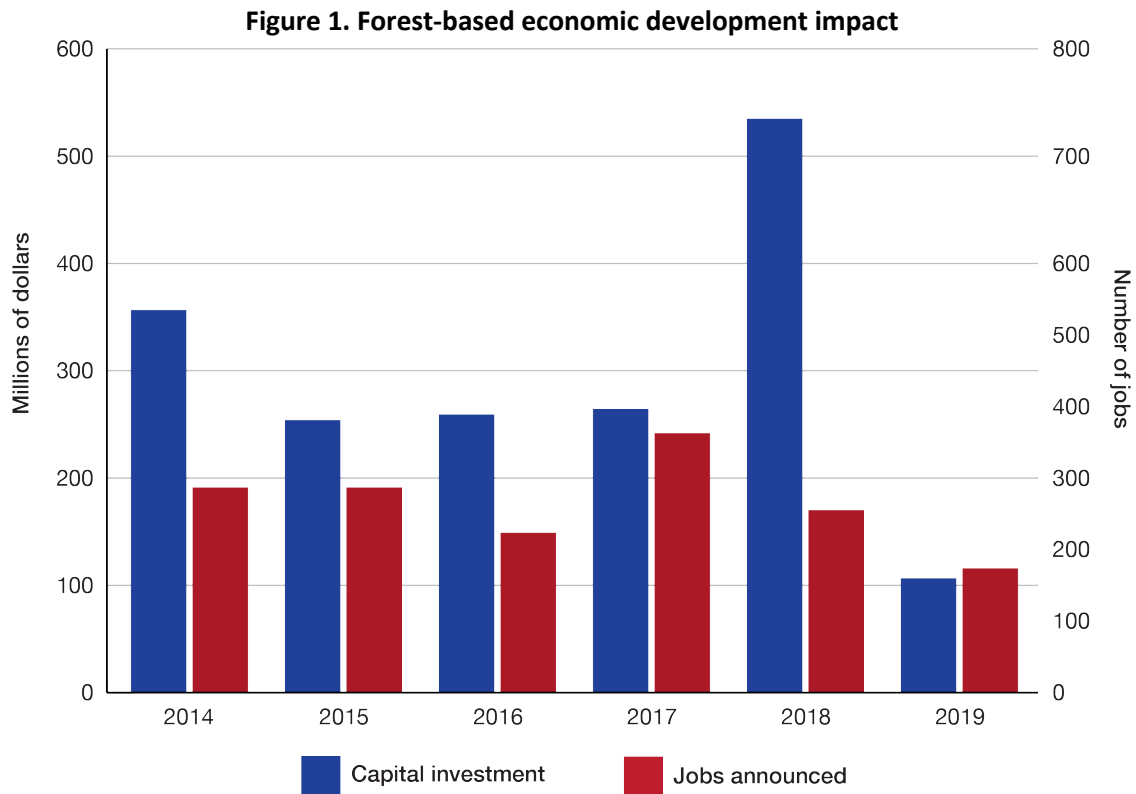
and growth, which also would set into motion additional adverse consequences. Not only would the resultant lack of markets lead to reduced returns on landowner investments, but it would also cause a decline in active forest management, which equates to less timber production and therefore fewer industry jobs. Secondary effects from this lack of development and management would be an increase in forest insect and disease damage, increased wildfire risk, deforestation, damage to forested wetlands and waterways, and a decline in the public’s understanding of the value of forests and the forest industry.

**Outside help needed to mitigate the failure of the agency to accomplish its mission would consist of:**

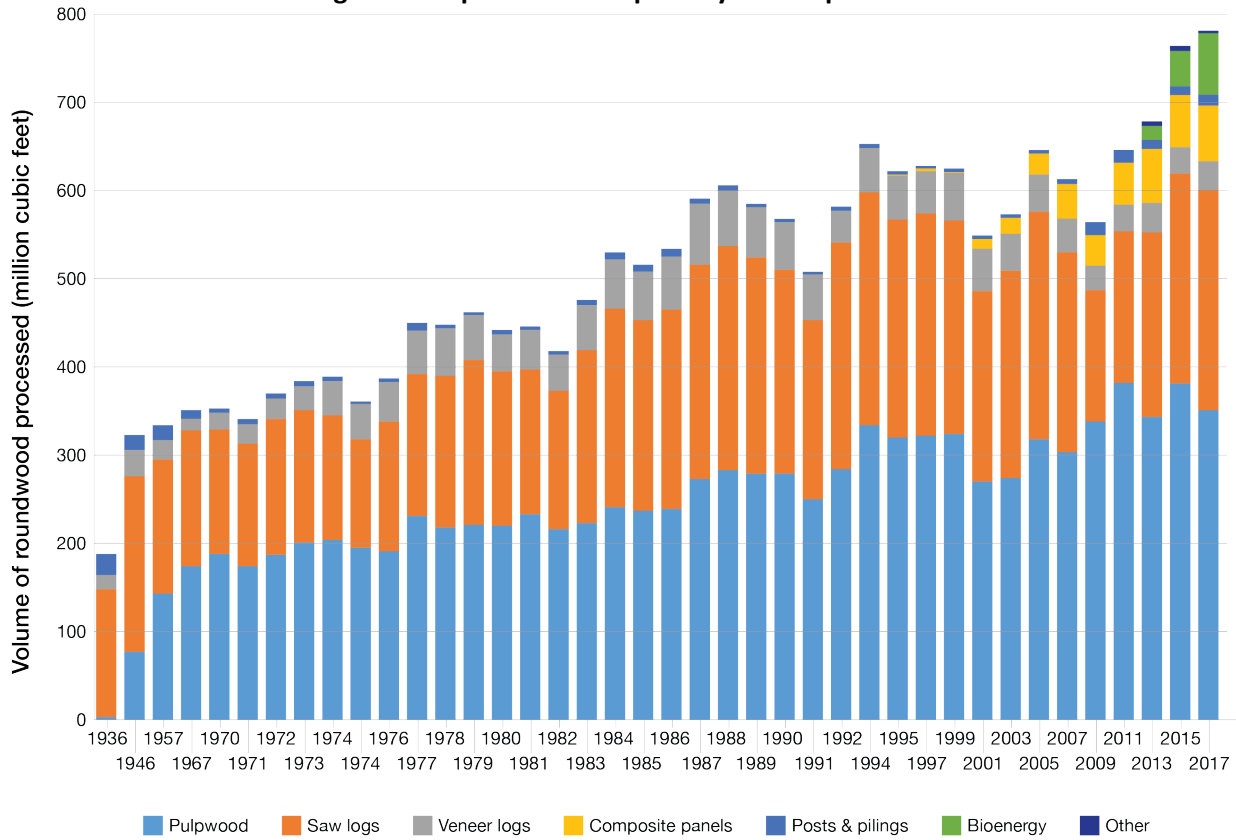
- Requesting additional fire protection resources from surrounding states, through the Southeastern Forest Fire Protection Compact and US Forest Service, which would require additional state funds to pay for these resources.
- Additional federal funding/staffing for economic development, technical assistance to family forest owners, and for wildfire suppression/prevention efforts.

**To help resolve the issue before it became a crisis, the General Assembly could do the following:**

- Provide funding and FTEs for critical agency positions.
- Provide \$1 million recurring funding for replacement of firefighting equipment and non-recurring funding to procure 2 newer aircraft for fire suppression efforts.
- Provide stable funding for retaining and growing the forest industry and encouraging landowners to actively manage their forest resources and grow more timber.



**Figure 2. SC production of primary timber products**



**Figure 3. Forestry's economic impact in South Carolina**

**Highlights**

- \$21 billion economic impact
- #1 harvested crop, totaling **\$1.1 billion**
- #1 export commodity from the Port of Charleston
- #2 manufacturing sector in jobs and labor income
- \$1.41 billion in forest products exports
- >84,000 jobs

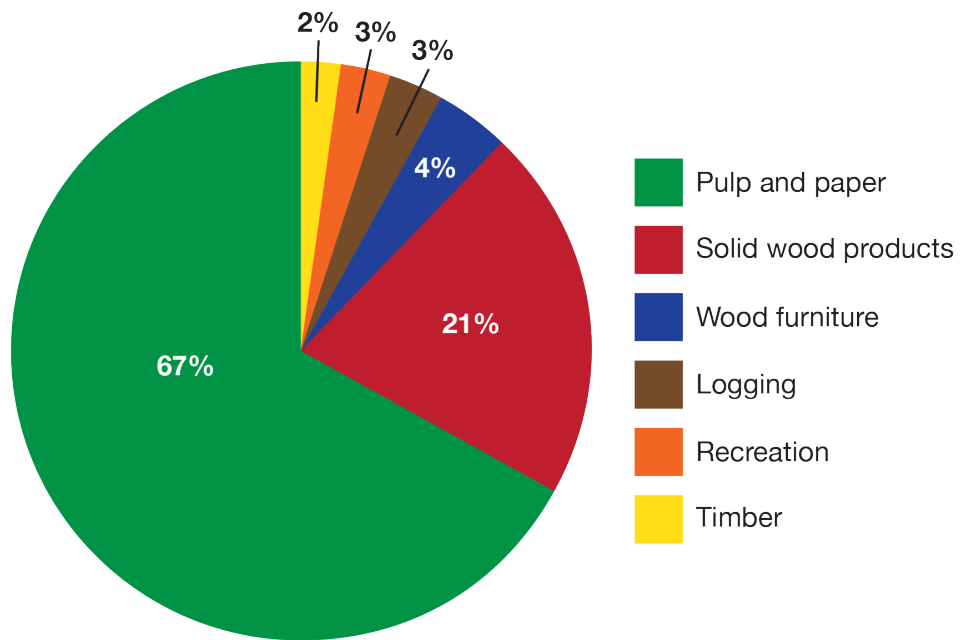


Figure 4. Firefighting dozers by service life category, FY2019

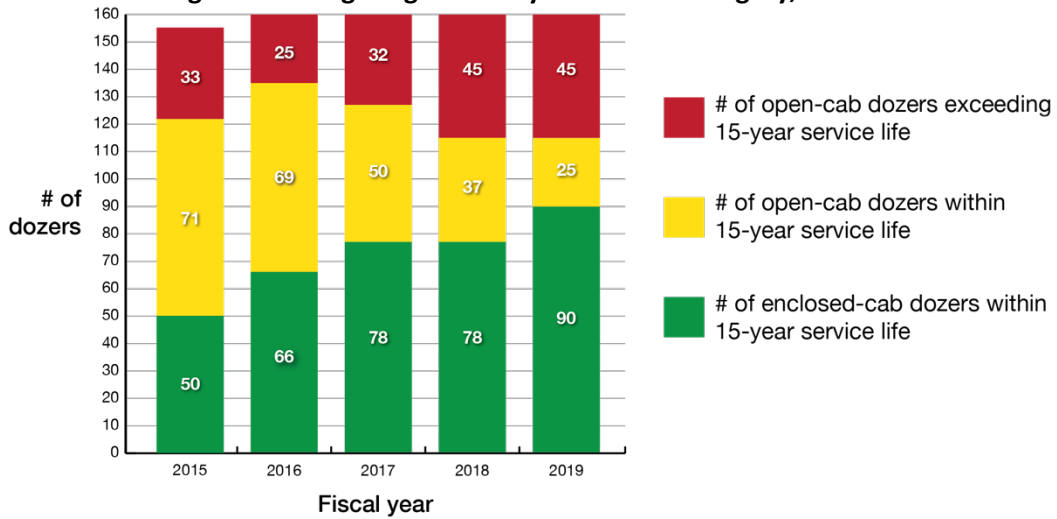


Figure 5. Average fire response time in minutes

(goal: 35 minutes or less at full staffing levels)

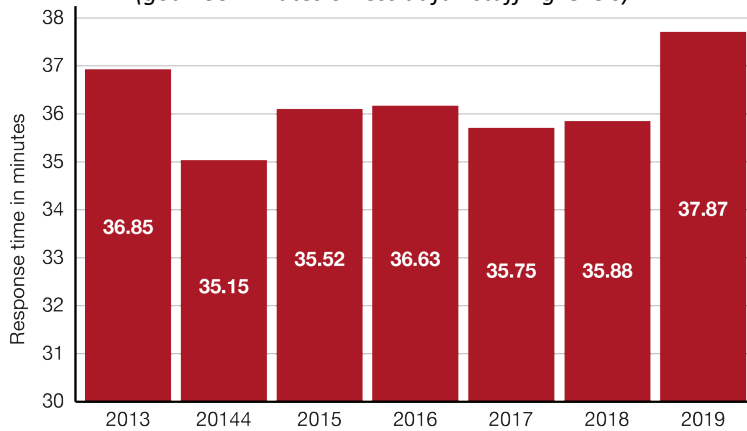
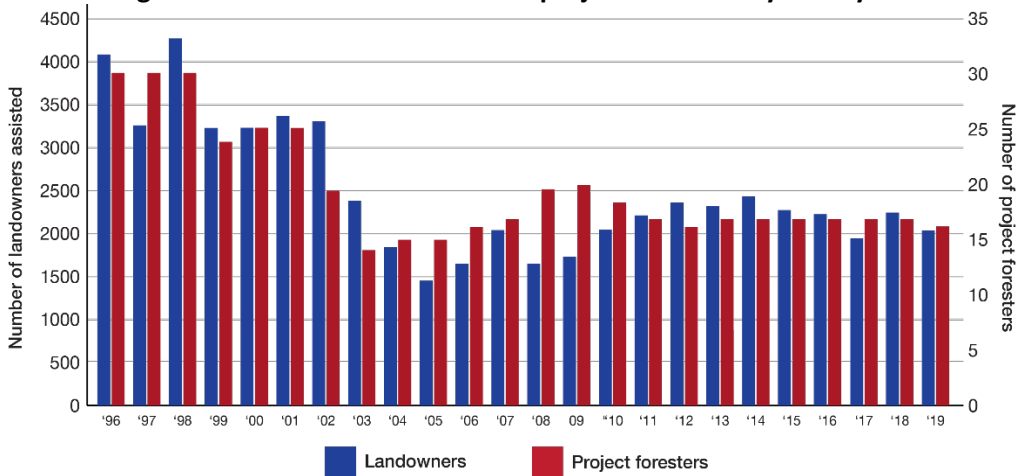
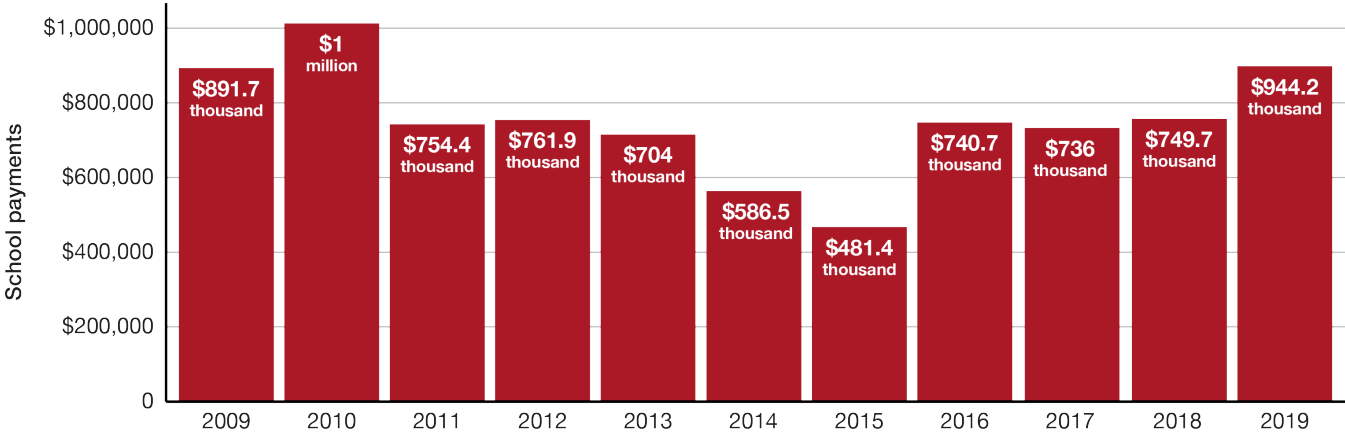


Figure 6. Landowners assisted and project foresters by fiscal year

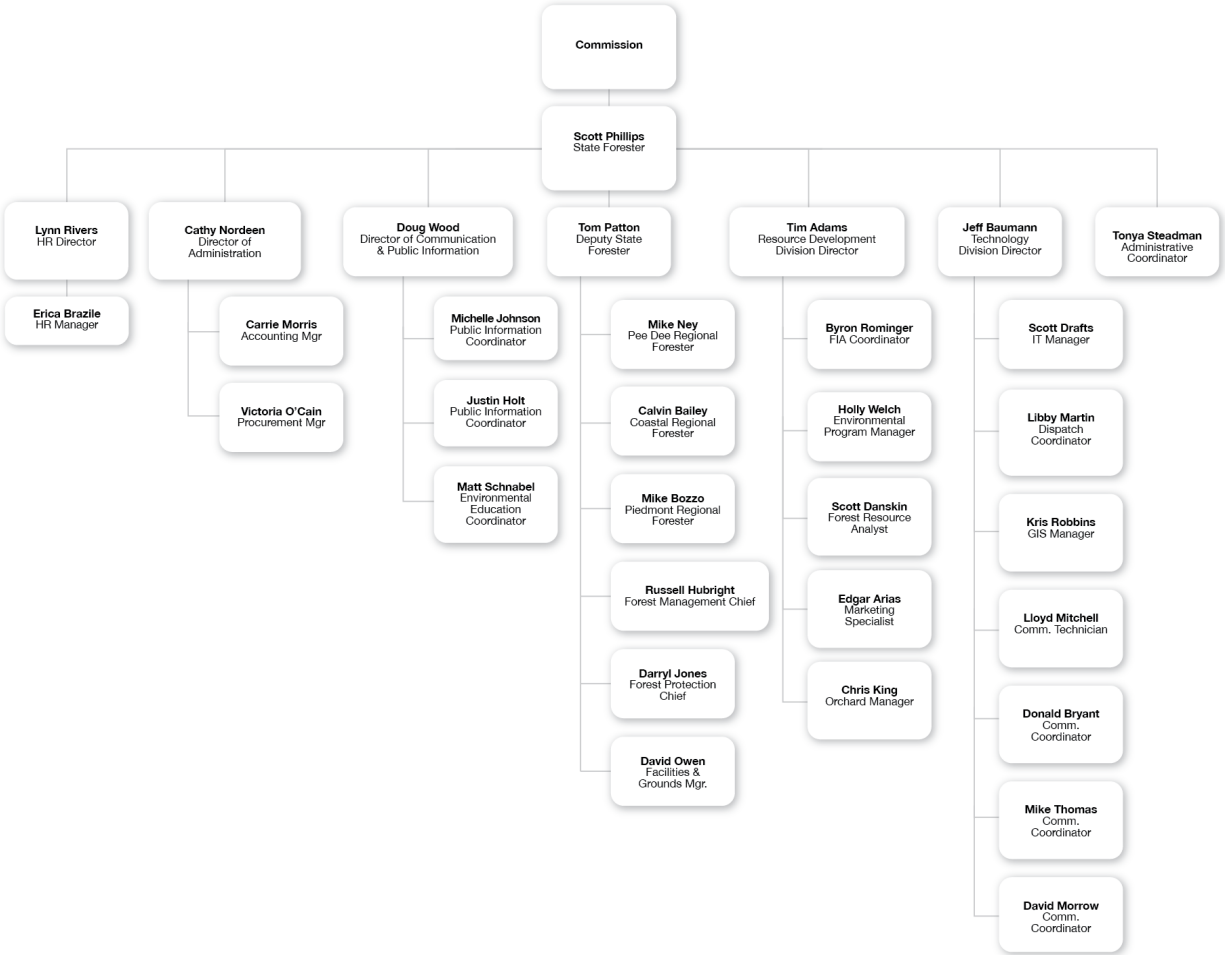


<b>AGENCY NAME:</b>	<b>South Carolina Forestry Commission</b>		
<b>AGENCY CODE:</b>	<b>P120</b>	<b>SECTION:</b>	<b>043</b>

**Figure 7. Payments to county school districts from State Forests system**



**Figure 8. SC Forestry Commission Organizational Chart**



Agency Name: FORESTRY COMMISSION

Fiscal Year 2018-2019  
Accountability Report

Agency Code: P120 Section: 43

Strategic Planning and Performance Measurement Template

Statewide Enterprise Strategic Objective	Type	Item #			Description	Base	2018-19		Time Applicable	Data Source and Availability	Calculation Method	Meaningful Use of Measure
		Goal	Strategy	Measure			Target	Actual				
Public Infrastructure and Economic Development	G	1			Develop the Resource							
	S	1.1			Serve as a catalyst for promotion, development and expansion of the forest							
	M			1.1.1	Announced capital investment in forestry	\$529.4 million	\$300 million	\$103.9 million	July 1 - June 30	SC Forestry Commission (SCFC) and SC Department of Commerce (SCDOC) Records, Monthly	Sum of \$ capital investment announced	Announced capital investment is a metric typically reported by the economic development community. It allows us to track the growth of forestry investment over time.
	M			1.1.2	Announced new job creation in forestry	270 jobs	400 jobs	185 jobs	July 1 - June 30	SCFC and SCDOC Records, Monthly	Sum of # new jobs announced	Announced new jobs is a metric typically reported by the economic development community. It allows us to track the growth of forestry employment over time.
	S	1.2			Provide policy makers, the forestry community, and the interested public							
	M			1.2.1	Forest Inventory and Analysis (FIA) plot production	576 (84%)	686	627	January 1 - December 31	US Forest Service FIA Program, Monthly	Sum of # plots completed (% of goal)	Forest Inventory & Analysis plot production records allow us to determine whether we've met our goal of measuring 20% (1 panel) of SC's total plots per year. This is SC's only forest census
	M			1.2.2	Industry Timber Production and Consumption (thousand cubic feet)	764,094 (2015 TPO)	800,000	781,348	January 1 - December 31	US Forest Service Timber Products Output (TPO) Program, Biennially	Data derived from TPO survey	Industrial timber production as measured by the Timber Products Output (TPO) mill survey is the best measure of the health and growth of our forest industry by major product category.
	M			1.2.3	Forest Inventory and Analysis (FIA) Accuracy Scores (percent)	95.40%	>95%	96.14%	January 1 - December 31	US Forest Service FIA Program, Annually	Average of individual QA/QC scores as reported by US Forest Service FIA	As SC's most reliable source of forest resource data, the Forest Inventory & Analysis' accuracy scores quantify the reliability of forest resource estimates.
	S	1.3			Maintain personnel and facilities to provide landowners with optimum quality							
	M			1.3.1	Seedlings sold	3,498,119	5,000,000	2,288,297	July 1 - June 30	ArborGene Seedling Sale Records, Monthly	Sum of # of seedlings sold	This metric is used to gauge the volume of seedling sales by the agency's forest tree nursery. Total seedling sales are directly related to seedling revenue.
	M			1.3.2	3rd generation improved seed produced (pounds)	724	625	340	July 1 - June 30	SCFC Cone Harvest Records, Annually	Sum of # of seed processed	The amount of 3rd generation seed is directly related to seedling sales and revenue. 3rd generation seed from our young developing pine orchards produces our seedlings with the fastest growth.
Maintaining Safety, Integrity and Security	G	2			Protect the Resource							
	S	2.1			Ensure prompt and effective response to wildfires and other natural disasters.							
	M			2.1.1	Average Wildfire Response Time (minutes)	35.88	≤35	37.87	July 1 - June 30	Agency Dispatch Records, Monthly	Time between initial report of wildfire and arrival of first firefighting unit	This metric is used to evaluate staffing levels, readiness levels, and dispatch processes to ensure rapid response to wildfires.
	M			2.1.2	Frontline Firefighting Dozers within 15- year service life	73%	71%	72%	July 1 - June 30	Agency Fleet Records, Annually	Analysis of age of dozers in agency fleet records	The SCFC is legally mandated to suppress wildfires. Dozers within the 15 year service life increase the safety of agency firefighters, increase efficiency, and having reliable equipment helps reduce the average wildfire size. This measure tracks progress toward our goal of providing every agency firefighter a dozer within the 15 year service life.

Agency Name: FORESTRY COMMISSION

Fiscal Year 2018-2019  
Accountability Report

Agency Code: P120 Section: 43

Strategic Planning and Performance Measurement Template

Statewide Enterprise Strategic Objective	Type	Item #			Description	Base	2018-19		Time Applicable	Data Source and Availability	Calculation Method	Meaningful Use of Measure
		Goal	Strategy	Measure			Target	Actual				
	M			2.1.3	Frontline Dozers with enclosed cabs	49%	56%	56%	July 1 - June 30	Agency Fleet Records, Annually	Number of enclosed cabs divided by desired frontline fleet (160)	The SCFC is legally mandated to suppress wildfires. Dozers with enclosed cabs increase the safety of agency firefighters, increase efficiency, and having reliable equipment helps reduce the average wildfire size. This measure tracks progress toward our goal of providing every agency firefighter a dozer with the added protection of an enclosed cab.
	M			2.1.4	Dozer Operators	154	160	145	July 1 - June 30	SCEIS RH010.1A & SCEIS RH010.1B Reports, Daily	SCEIS reports sorted to provide number of filled dozer operator FTEs	The target value reflects agency goals to ensure we have sufficient firefighters available to respond to the number of wildfires that occur in an average year. Fluctuations in the actual value reflect attrition and challenges with employee recruitment and retention.
	S			2.2	Enhance water quality protection by increasing awareness and compliance							
	M			2.2.1	Forestry Best Management Practices (BMP) Compliance	97%	>95%	97%	Triennial	Agency Records, Triennially	Most recent BMP Monitoring Survey	Best Management Practices compliance as measured in random monitoring surveys of logging operations is an excellent measure of the success of our overall BMP program.
Government and Citizens	G			3	Manage the Resource							
	S			3.1	Provide improved land management services to landowners, including							
	M			3.1.1	Number of Landowners Assisted	2,246	2,500	2,013	July 1 - June 30	SCFC 3209-1 Database, Monthly	Total number of forest landowners who receive assistance documented by a case file or other written record. A landowner is to be recorded only once during a fiscal year regardless of the number of times assisted.	The number of landowners assisted is directly correlated to the economic impact of private land management in SC. Section 48-23-90 requires SCFC to provide this assistance.
	M			3.1.2	Forest management assistance customer satisfaction level	94%	100%	94.6	July 1 - June 30	SCFC Survey, Daily	Averaging of all survey responses from recipients of RFA and Stewardship plans, forestry services, and cost share assistance	Measuring customer satisfaction provides an indication of how well the agency is meeting its customer's expectations and allows SCFC to improve its quality of service.
	M			3.1.3	Unfunded reforestation backlog in Forest Renewal Program (FRP)	\$864,250	<\$1000000	1,335,888	July 1 - June 30	SCFC FRP Database, Daily	Total value of all unfunded FRP applications at the completion of initial allocation for the fiscal year. The sum product of the acres of approved practices and the cost share rates.	The amount of backlog under this cost-share program is an indicator of the balance between the demand for these funds and the supply of these funds.
	M			3.1.4	State Forests - Net Revenue	\$339,938	>\$100000	\$904,496	July 1 - June 30	Agency Records, Periodically	Sum of all expenses subtracted from the sum of all revenue	Net revenue indicates whether revenue has been sufficient to meet the fiscal needs of state forests.
	S			3.2	Provide technical, educational, and financial assistance in urban and							
	M			3.2.1	Urban & Community Forestry program outreach (citizens served)	2,124,256	2,000,000	1,633,573	July 1 - June 30	Agency Records, Monthly	Sum of the census populations of communities assisted as provided by US Forest Service Community Assistance Reporting System	The number of citizens served through SCFC's urban program provides an indication of the agency's fulfillment of Section 48-23-90, which requires SCFC to provide this assistance.
Education, Training, and Human Development	G			4	Raise Awareness about the Resource							
	S			4.1	Provide forestry education programs for targeted audiences.							

Agency Name: FORESTRY COMMISSION

Fiscal Year 2018-2019  
Accountability Report

Agency Code: P120 Section: 43

Strategic Planning and Performance Measurement Template

Statewide Enterprise Strategic Objective	Type	Item #			Description	Base	2018-19		Time Applicable	Data Source and Availability	Calculation Method	Meaningful Use of Measure
		Goal	Strategy	Measure			Target	Actual				
	M			4.1.1	Forestry education program participants	4909	4000	8197	Fall	Event records, Annually	Sum of number of all teachers and students participating in Wood Magic, Project Learning Tree and Teachers' Tour events	The number of educational program participants is a function of – and indicator of – the agency's educational programming capacity.
	M			4.1.2	Test Score Improvement - Wood Magic Forest Fair	84%	75%	83%	Fall	Event records, available in December	Increase in knowledge of Wood Magic participants as calculated by dividing the average of the pre-test scores by the average of the post-test scores expressed as a percentage	The participants' Wood Magic post-test scores are an indicator of the event's effectiveness at educating children about the advantages, benefits and value of trees to our economy, society and well-being.
	S			4.2	Enhance the image of the Forestry Commission as an initial source for forest							
	M			4.2.1	SCFC website hits	818,460	900,000	830,407	July 1 - June 30	Provided by host of website, Monthly	Sum of number of unique visits to all individual SCFC web pages	The number of unique visits to all SCFC web pages is an indicator of the level of engagement the agency has with the public.
Education, Training, and Human Development	G			5	Prepare to Meet Future Demands							
	S			5.1	Maintain a capable, well-trained and diverse work team.							
	M			5.1.1	Continuous evaluation of staffing levels (FTEs)	362.55	365.55	365.8	July 1 - June 30	State Appropriations Act, Annually	Sum of appropriated FTEs	This performance measure reflects the staffing level identified and required for the agency to achieve its maximum performance and be successful in carrying out its strategic objectives.
	S			5.2	Provide employees with a safe and productive working environment.							
	M			5.2.1	Reduce loss time incidents that resulted in day(s) away from work	3	0	2	July 1 - June 30	Claims Activity Report & Accord Form, Daily	Secondary reporting from predetermined calculations	This performance measure is one measure to identify the effectiveness of the agency's safety management program and the agency's proactive approach to prevent workplace injuries and illnesses.
	M			5.2.2	Reduce work-related accidents/injuries	4	0	6	July 1 - June 30	Claims Activity Report & OSHA Form 300, SCEIS leave records, Daily	Reported number of incidents	This performance measure is a measure to identify and evaluate job hazards and/or specific work tasks that may contribute to safety risks in the workplace and to modify the job or make process changes when needed.

Agency Name: FORESTRY COMMISSION

Fiscal Year 2018-2019  
Accountability Report

Agency Code: P120 Section: 43

Strategic Planning and Performance Measurement Template

Statewide Enterprise Strategic Objective	Type	Item #			Description	2019-20			Time Applicable	Data Source and Availability	Calculation Method	Meaningful Use of Measure
		Goal	Strategy	Measure		Base	Target	Actual				
	M			1.1.1	Announced capital investment in forestry	\$103.9 million	\$250 million		July 1 - June 30	SC Forestry Commission (SCFC) and SC Department of Commerce (SCDOC) Records, Monthly	Sum of \$ capital investment announced	Announced capital investment is a metric typically reported by the economic development community. It allows us to track the growth of forestry investment over time.
	M			1.1.2	Announced new job creation in forestry	185 jobs	250 jobs		July 1 - June 30	SCFC and SCDOC Records, Monthly	Sum of # new jobs announced	Announced new jobs is a metric typically reported by the economic development community. It allows us to track the growth of forestry employment over time.
	S			1.2	<b>Provide policy makers, the forestry community, and the interested public</b>							
	M			1.2.1	Forest Inventory and Analysis (FIA) plot production	627	622		January 1 - December 31	US Forest Service FIA Program, Monthly	Sum of # plots completed (% of goal)	Forest Inventory & Analysis plot production records allow us to determine whether we've met our goal of measuring 20% (1 panel) of SC's total plots per year. This is SC's only forest census
	M			1.2.2	Industry Timber Production and Consumption (thousand cubic feet)	781,348	800,000		January 1 - December 31	US Forest Service Timber Products Output (TPO) Program, Biennially	Data derived from TPO survey	Industrial timber production as measured by the Timber Products Output (TPO) mill survey is the best measure of the health and growth of our forest industry by major product category.
	M			1.2.3	Forest Inventory and Analysis (FIA) Accuracy Scores (percent)	96.14%	95%		January 1 - December 31	US Forest Service FIA Program, Annually	Average of individual QA/QC scores as reported by US Forest Service FIA	As SC's most reliable source of forest resource data, the Forest Inventory & Analysis' accuracy scores quantify the reliability of forest resource estimates.
	S			1.3	<b>Maintain personnel and facilities to provide landowners with optimum quality</b>							
	M			1.3.1	Seedlings sold	2,288,297	3,372,400		July 1 - June 30	ArborGene Seedling Sale Records, Monthly	Sum of # of seedlings sold	This metric is used to gauge the volume of seedling sales by the agency's forest tree nursery. Total seedling sales are directly related to seedling revenue.
	M			1.3.2	3rd generation improved seed produced (pounds)	340	600		July 1 - June 30	SCFC Cone Harvest Records, Annually	Sum of # of seed processed	The amount of 3rd generation seed is directly related to seedling sales and revenue. 3rd generation seed from our young developing pine orchards produces our seedlings with the fastest growth.
Maintaining Safety, Integrity and Security	G			2	<b>Protect the Resource</b>							
	S			2.1	<b>Ensure prompt and effective response to wildfires and other natural disasters.</b>							
	M			2.1.1	Average Wildfire Response Time (minutes)	37.87	≤35		July 1 - June 30	Agency Dispatch Records, Monthly	Time between initial report of wildfire and arrival of first firefighting unit	This metric is used to evaluate staffing levels, readiness levels, and dispatch processes to ensure rapid response to wildfires.
	M			2.1.2	Frontline Firefighting Dozers within 15- year service life	72%	79%		July 1 - June 30	Agency Fleet Records, Annually	Analysis of age of dozers in agency fleet records	The SCFC is legally mandated to suppress wildfires. Dozers within the 15 year service life increase the safety of agency firefighters, increase efficiency, and having reliable equipment helps reduce the average wildfire size. This measure tracks progress toward our goal of providing every agency firefighter a dozer within the 15 year service life.



Agency Name: FORESTRY COMMISSION

Fiscal Year 2018-2019  
Accountability Report

Agency Code: P120 Section: 43

Strategic Planning and Performance Measurement Template

Statewide Enterprise Strategic Objective	Type	Item #			Description	2019-20			Time Applicable	Data Source and Availability	Calculation Method	Meaningful Use of Measure
		Goal	Strategy	Measure		Base	Target	Actual				
	M			2.1.3	Frontline Dozers with enclosed cabs	56%	64%		July 1 - June 30	Agency Fleet Records, Annually	Number of enclosed cabs divided by desired frontline fleet (160)	The SCFC is legally mandated to suppress wildfires. Dozers with enclosed cabs increase the safety of agency firefighters, increase efficiency, and having reliable equipment helps reduce the average wildfire size. This measure tracks progress toward our goal of providing every agency firefighter a dozer with the added protection of an enclosed cab.
	M			2.1.4	Dozer Operators	145	160		July 1 - June 30	SCEIS RH010.1A & SCEIS RH010.1B Reports, Daily	SCEIS reports sorted to provide number of filled dozer operator FTEs	The target value reflects agency goals to ensure we have sufficient firefighters available to respond to the number of wildfires that occur in an average year. Fluctuations in the actual value reflect attrition and challenges with employee recruitment and retention.
	S			2.2	Enhance water quality protection by increasing awareness and compliance							
	M			2.2.1	Forestry Best Management Practices (BMP) Compliance	97%	>95%		Triennial	Agency Records, Triennially	Most recent BMP Monitoring Survey	Best Management Practices compliance as measured in random monitoring surveys of logging operations is an excellent measure of the success of our overall BMP program.
Government and Citizens	G			3	Manage the Resource							
	S			3.1	Provide improved land management services to landowners, including							
	M			3.1.1	Number of Landowners Assisted	2,013	2,500		July 1 - June 30	SCFC 3209-1 Database, Monthly	Total number of forest landowners who receive assistance documented by a case file or other written record. A landowner is to be recorded only once during a fiscal year regardless of the number of times assisted.	The number of landowners assisted is directly correlated to the economic impact of private land management in SC. Section 48-23-90 requires SCFC to provide this assistance.
	M			3.1.2	Forest management assistance customer satisfaction level	94.6	100%		July 1 - June 30	SCFC Survey, Daily	Averaging of all survey responses from recipients of RFA and Stewardship plans, forestry services, and cost share assistance	Measuring customer satisfaction provides an indication of how well the agency is meeting its customer's expectations and allows SCFC to improve its quality of service.
	M			3.1.3	Unfunded reforestation backlog in Forest Renewal Program (FRP)	\$1,335,888	<\$1,000,000		July 1 - June 30	SCFC FRP Database, Daily	Total value of all unfunded FRP applications at the completion of initial allocation for the fiscal year. The sum product of the acres of approved practices and the cost share rates.	The amount of backlog under this cost-share program is an indicator of the balance between the demand for these funds and the supply of these funds.
	M			3.1.4	State Forests - Net Revenue	\$904,496	>\$100,000		July 1 - June 30	Agency Records, Periodically	Sum of all expenses subtracted from the sum of all revenue	Net revenue indicates whether revenue has been sufficient to meet the fiscal needs of state forests.
	S			3.2	Provide technical, educational, and financial assistance in urban and							
	M			3.2.1	Urban & Community Forestry program outreach (citizens served)	1,633,573	2,000,000		July 1 - June 30	Agency Records, Monthly	Sum of the census populations of communities assisted as provided by US Forest Service Community Assistance Reporting System	The number of citizens served through SCFC's urban program provides an indication of the agency's fulfillment of Section 48-23-90, which requires SCFC to provide this assistance.
Education, Training, and Human Development	G			4	Raise Awareness about the Resource							
	S			4.1	Provide forestry education programs for targeted audiences.							

Agency Name: FORESTRY COMMISSION

Fiscal Year 2018-2019  
Accountability Report

Agency Code: P120 Section: 43

Strategic Planning and Performance Measurement Template

Statewide Enterprise Strategic Objective	Type	Item #			Description	2019-20			Time Applicable	Data Source and Availability	Calculation Method	Meaningful Use of Measure
		Goal	Strategy	Measure		Base	Target	Actual				
	M			4.1.1	Forestry education program participants	8197	6000		Fall	Event records, Annually	Sum of number of all teachers and students participating in Wood Magic, Project Learning Tree and Teachers' Tour events	The number of educational program participants is a function of—and indicator of—the agency's educational programming capacity.
	M			4.1.2	Test Score Improvement - Wood Magic Forest Fair	83%	75%		Fall	Event records, available in December	Increase in knowledge of Wood Magic participants as calculated by dividing the average of the pre-test scores by the average of the post-test scores expressed as a percentage	The participants' Wood Magic post-test scores are an indicator of the event's effectiveness at educating children about the advantages, benefits and value of trees to our economy, society and well-being.
	S		4.2		<b>Enhance the image of the Forestry Commission as an initial source for forest</b>							
	M			4.2.1	SCFC website hits	830,407	900,000		July 1 - June 30	Provided by host of website, Monthly	Sum of number of unique visits to all individual SCFC web pages	The number of unique visits to all SCFC web pages is an indicator of the level of engagement the agency has with the public.
Education, Training, and Human Development	G	5			<b>Prepare to Meet Future Demands</b>							
	S		5.1		<b>Maintain a capable, well-trained and diverse work team.</b>							
	M			5.1.1	Continuous evaluation of staffing levels (FTEs)	365.8	365.8		July 1 - June 30	State Appropriations Act, Annually	Sum of appropriated FTEs	This performance measure reflects the staffing level identified and required for the agency to achieve its maximum performance and be successful in carrying out its strategic objectives.
	M			5.1.2	Turnover rate (new performance measure, 2019)	7.70%	≤10%		July 1 - June 30	PEBA database; SCEIS; personnel files	Number of separations during a month divided by the average number of employees, multiplied by 100.	This measure analyzes the impacts on finances, productivity, efficiency over time and allows the agency to develop strategies to mitigate these costs, while potentially providing clues as to the reasons behind the employee
	S		5.2		<b>Provide employees with a safe and productive working environment.</b>							
	M			5.2.1	Reduce loss time incidents that resulted in day(s) away from work	2	0		July 1 - June 30	Claims Activity Report & Accord Form, Daily	Secondary reporting from predetermined calculations	This performance measure is one measure to identify the effectiveness of the agency's safety management program and the agency's proactive approach to prevent workplace injuries and illnesses.
	M			5.2.2	Reduce work-related accidents/injuries	6	0		July 1 - June 30	Claims Activity Report & OSHA Form 300, SCEIS leave records, Daily	Reported number of incidents	This performance measure is a measure to identify and evaluate job hazards and/or specific work tasks that may contribute to safety risks in the workplace and to modify the job or make process changes when needed.

Agency Name: FORESTRY COMMISSION

Fiscal Year 2018-2019  
Accountability Report

Agency Code: P120 Section: 043

Program Template

Program/Title	Purpose	FY 2018-19 Expenditures (Actual)				FY 2019-20 Expenditures (Projected)				Associated Measure(s)
		General	Other	Federal	TOTAL	General	Other	Federal	TOTAL	
I. Administration	Provide administrative support, i.e. human resources, payroll benefits, procurement, etc. to agency personnel (SC Code of Laws Title 48, Chapters 23 - 37).	\$ 1,117,017			\$ 1,117,017	\$ 1,250,000			\$ 1,250,000	5.1.1, 5.2.1, 5.2.2
II. Forest Protection and Development	Protect forests from harm from wildfires, forest pests and natural disasters. Maintain a productive forest land base, provide quality tree seedlings and develop a strong forest industry. (SC Code of Laws Title 48, Chapters 23 - 37).	\$ 17,704,007	\$ 2,930,880	\$ 3,069,533	\$ 23,704,420	\$ 20,742,962	\$ 7,242,273	\$ 4,100,000	\$ 32,085,235	1.1.1, 1.1.2, 1.2.1, 1.2.2, 1.2.3, 1.3.1, 1.3.2, 1.3.3, 2.1.1, 2.1.2, 2.1.3, 2.1.4, 2.2.1, 3.1.1, 3.1.2, 3.1.3, 3.1.4, 3.2.1, 3.2.2, 3.2.3
III. State Forests	Manage state forests on a sustainable basis to provide multiple benefits and serve as a model for private forest landowners (SC Code of Laws Title 48, Chapter 23).		\$ 2,908,790		\$ 2,908,790	\$ 120,000	\$ 3,100,000		\$ 3,220,000	2.1.1, 2.1.2, 2.1.3, 2.1.4, 2.2.1, 3.1.1, 3.1.2, 3.1.3, 3.1.4, 3.2.1, 3.2.2, 3.2.3
IV. Education	Increase the public's awareness of the benefits of sustainable forest management, the advantages of forestry and the values of forests (SC Code of Laws Title 48, Chapter 23).	\$ 439,023			\$ 439,023	\$ 350,000			\$ 350,000	4.1.1, 4.1.2, 4.2.1
					\$ -				\$ -	
		\$ 19,260,047	\$ 5,839,670	\$ 3,069,533	\$ 28,169,250	\$ 22,462,962	\$ 10,342,273	\$ 4,100,000	\$ 36,905,235	

Agency Name: FORESTRY COMMISSION

Fiscal Year 2018-2019  
Accountability Report

Agency Code: P120 Section: 043

Legal Standards Template

Item #	Law Number	Jurisdiction	Type of Law	Statutory Requirement and/or Authority Granted	Does this law specify who your agency must or may serve? (Y/N)	Does the law specify a product or service your agency must or may provide?	If yes, what type of service or product?	If other service or product, please specify what service or product.
1	Section 48-23-90: General duties of Commission	State	Statute	Reports to the General Assembly on forest conditions. Prevent, control, and extinguish fires. Enforce forest laws. Advise and assist private land owners. Promote public appreciation of the advantages of forestry and the value of forests.	Yes	Yes	Report our agency must/may provide	Prevent, control, and extinguish fires. Enforce forest laws. Advise and assist private land owners. Promote public appreciation of the advantages of forestry and the value of forests.
2	Section 48-23-100: Growing and selling forest tree seedlings and transplants	State	Statute	Defines the growth and sale of forest tree seedlings and transplants; restrictions; receipts to revolving fund; purchase for resale and revolving fund.	No	Yes	Other service or product our agency must/may provide	Defines the growth and sale of forest tree seedlings and transplants; restrictions; receipts to revolving fund; purchase for resale and revolving fund.
3	Section 48-23-120	State	Statute	Acquisition of real estate for timber production and other purposes	No	Yes	Other service or product our agency must/may provide	Acquisition of real estate for timber production and other purposes
4	Section 48-23-130: Acquisition by Commission of Lands for State Forests	State	Statute	Allows the agency to enter into agreements with federal or other agencies for the acquisition of lands.	Yes	Yes	Other service or product our agency must/may provide	Allows the agency to enter into agreements with federal or other agencies for the acquisition of lands.
5	Section 48-23-260: Counties containing State Forest Lands Shall Share in Revenues	State	Statute	25% of gross revenue earned from certain privileges on state forest land each year is provided to the counties in which revenue is earned to be spent for "general school purposes." H.3383 (2019) amended this section to exempt the proceeds from land rentals being included in the gross revenue calculations.	Yes	Yes	Distribute funding to another entity	25% of gross revenue earned from certain privileges on state forest land each year is provided to the counties in which revenue is earned to be spent for "general school purposes." H.3383 (2019) amended this section to exempt the proceeds from land rentals being included in the gross revenue calculations.
6	Section 48-23-265: Defines Timber Theft and Fraud	State	Statute	Defines timber theft and fraud.	Yes	Yes	Other service or product our agency must/may provide	Defines timber theft and fraud.
7	Section 48-23-295 Forestry Services to Landowners	State	Statute	Scientific, technical, practical. Provides for assistance with afforestation, reforestation, maximum production of woodlands. Specialized equipment/operators or rental of same. Reasonable fees may be charged and receipts retained.	Yes	Yes	Other service or product our agency must/may provide	Scientific, technical, practical. Provides for assistance with afforestation, reforestation, maximum production of woodlands. Specialized equipment/operators or rental of same. Reasonable fees may be charged and receipts retained.
8	Proviso 43.1	State	Proviso	Grant Funds Carry Forward - Authorizes unexpended grant funds in the current year to pay for expenditures incurred in the prior year.	No	Yes	Other service or product our agency must/may provide	Grant Funds Carry Forward - Authorizes unexpended grant funds in the current year to pay for expenditures incurred in the prior year.
9	Proviso 43.2	State	Proviso	Retention of Emergency Expenditure Refunds - Authorizes agency to retain all funds received as reimbursement of expenditures from other state or federal agencies when personnel and equipment are mobilized due to an emergency.	Yes	No		
10	Proviso 43.3	State	Proviso	Commissioned Officers' Physicals - Authorizes the Commission to pay the cost of physical examinations for agency personnel who are required to receive such physical examinations prior to receiving a law enforcement commission.	Yes	Yes	Other service or product our agency must/may provide	Commissioned Officers' Physicals - Authorizes the Commission to pay the cost of physical examinations for agency personnel who are required to receive such physical examinations prior to receiving a law enforcement commission.
11	Proviso 43.4	State	Proviso	Compensatory Payment - Authorizes exempt employees of the agency may be paid for actual hours worked in lieu of compensatory time, at the discretion of the agency director, and providing funds are available.	Yes	Yes	Other service or product our agency must/may provide	Compensatory Payment - Authorizes exempt employees of the agency may be paid for actual hours worked in lieu of compensatory time, at the discretion of the agency director, and providing funds are available.
	Proviso 47.14	State	FY 2019-20 Proviso	Funds Transfer by DNR to Forestry Commission - For the current fiscal year, the Department of Natural Resources shall transfer \$100,000 of the funds appropriated for operating expenses of Wildlife and Freshwater Fisheries (Wildlife Management Areas) to the Forestry Commission.	No	No - But relates to sources of funding for one or more agency deliverables		
12	Proviso 8.4	State	Proviso	Wireless Communications Tower: Educational Television Commission is directed to coordinate tower and antenna operations within South Carolina state government.	No	Yes	Other service or product our agency must/may provide	(ETV: Wireless Communications Tower) Educational Television Commission is directed to coordinate tower and antenna operations within South Carolina state government
13	Proviso 93.15	State	Proviso	Sale of surplus real property - Authorizes SC Forestry Commission to retain the net proceeds from the sale of surplus land for use in firefighting operations and replacement of firefighting equipment.	No	Yes	Other service or product our agency must/may provide	Sale of surplus real property - Authorizes SC Forestry Commission to retain the net proceeds from the sale of surplus land for use in firefighting operations and replacement of firefighting equipment.
14	Proviso 93.16	State	Proviso	Cyber Security - Adoption and Implementation of cyber security policies, guidelines, and standards.	Yes	Yes	Other service or product our agency must/may provide	Cyber Security - Adoption and Implementation of cyber security policies, guidelines, and standards.
15	Proviso 117.15	State	Proviso	Allowance for Residences & Compensation Restrictions - Authorizes residences for forestry aides and caretaker at central headquarters.	Yes	Yes	Other service or product our agency must/may provide	Allowance for Residences & Compensation Restrictions - Authorizes residences for forestry aides and caretaker at central headquarters.
16	Proviso 117.83	State	Proviso	Websites - Providing link on agency website to monthly state procurement card statements or report with same information.	Yes	Yes	Report our agency must/may provide	Websites - Providing link on agency website to monthly state procurement card statements or report with same information.
18	Proviso 117.103	State	Proviso	Data Breach Notification - Requirements for state agencies.	Yes	Yes	Report our agency must/may provide	Data Breach Notification - Requirements for state agencies.
19	Proviso 117.110	State	Proviso	Information Technology and Information Security Plans	Yes	Yes	Report our agency must/may provide	Information Technology and Information Security Plans.
	Proviso 117.117	State	FY 2019-20 Proviso	Statewide Strategic Information Technology Plan Implementation	No	No - But relates to manner in which one or more agency deliverables is provided		
	Section 30.4.10-165	State	Statute	S.C. Freedom Of Information Act: public business be performed in an open and public manner so that citizens shall be advised of the performance of public officials and of the decisions that are reached in public activity and in the formulation of public policy.	Yes	Yes	Other service or product our agency must/may provide	The availability and provision of the agency's public records to all requestors pursuant to the Freedom Of Information Act.

21	42 U.S.C. Section 5191: Stafford Disaster Relief and Emergency Assistance Act	Federal	Statute	Allows the Federal Government to provide assistance to state government to relieve hardship and damage that occur from disasters. Provides access to grants and severity funds after disasters.	Yes	Yes	Other service or product our agency must/may provide	Allows the Federal Government to provide assistance to state government to relieve hardship and damage that occur from disasters. Provides access to grants and severity funds after disasters.
22	7 U.S.C. Section 136: Endangered Species Act	Federal	Statute	Designed to protect species from extinction. Requires the SC Forestry Commission to manage for threatened & endangered species on state forests.	No	Yes	Other service or product our agency must/may provide	Designed to protect species from extinction. Requires the SC Forestry Commission to manage for threatened & endangered species on state forests.
23	42 U.S.C. Section Chapter 85, Section 7401: Clean Air Act	Federal	Statute	Designed to control air pollution on a national level. Administered in SC by DHEC, this law impacts wildfire suppression, prescribed burning, and forest management. The SC Forestry Commission and DHEC jointly administer South Carolina's Smoke Management Guidelines.	Yes	No		
24	P.L. 95-313: Cooperative Forestry Assistance Act	Federal	Statute	Authority of the United States Forest Service to provide financial and technical assistance to states and private landowners on a variety of forestry issues, including forest management and stewardship, fire protection, insect and disease control, reforestation and stand improvement, and urban forestry.	Yes	Yes	Other service or product our agency must/may provide	Authority of the United States Forest Service to provide financial and technical assistance to states and private landowners on a variety of forestry issues, including forest management and stewardship, fire protection, insect and disease control, reforestation and stand improvement, and urban forestry.
25	33 U.S.C. Section 1251-1387: Clean Water Act	Federal	Statute	Primary federal law governing water pollution. Administered in SC by DHEC, this law governs forest management activities in wetlands, road construction, and impacts to water quality. The SC Forestry Commission administers South Carolina's Best Management Practices for Forestry through an MOU with SCDHEC.	Yes	Yes	Other service or product our agency must/may provide	Primary federal law governing water pollution. Administered in SC by DHEC, this law governs forest management activities in wetlands, road construction, and impacts to water quality. The SC Forestry Commission administers South Carolina's Best Management Practices for Forestry through an MOU with SCDHEC.
26	Sections 48-23-10	State	Statute	Establishes the SC Forestry Commission, terms of office, and qualifications of Commissioners, meetings, and reimbursement, qualifications/duties of State Forester.	No	No		
27	48-23-20	State	Statute	Establishes the terms of office of the members of the commission.	No	No		
28	48-23-30	State	Statute	Establishes the process for selecting a chairman and defines the chair's roles and responsibilities.	No	No		
29	48-23-40	State	Statute	Establishes the authority to pay commissioners' expenses while acting on behalf of commission.	No	No		
30	48-23-50	State	Statute	Establishes the appointment, qualifications and duties of the State Forester.	No	No		
31	48-23-60	State	Statute	Establishes that the State Forester State is the secretary to the commission.	No	No		
32	Sections 48-23-70	State	Statute	Defines unlawful acts on State Forests. Authorizes the SC Forestry Commission to buy, sell, and rent property, cooperate with federal agencies in reforestation, negotiate agreements for fire suppression, develop forest disaster plans.	Yes	Yes	Other service or product our agency must/may provide	Authorizes the SC Forestry Commission to buy, sell, and rent property, cooperate with federal agencies in reforestation, negotiate agreements for fire suppression, develop forest disaster plans.
33	48-23-80	State	Statute	Establishes the general powers of the commission.	No	No - Does not relate directly to any agency deliverables		
34	48-23-85	State	Statute	Establishes the power of the commission to negotiate agreements with federal agencies for certain services on federal lands.	No	No - Does not relate directly to any agency deliverables		
35	48-23-86	State	Statute	Establishes the duties of State Forester and Forestry Commission with respect to forest disasters; development of Forest Disaster Plan.	Yes	Yes	Other service or product our agency must/may provide	The Forestry Commission shall also assist other state agencies, utility companies and cooperatives, in the clearing of transportation routes, and power and communication lines.
36	Sections 48-23-95	State	Statute	Defines forest law enforcement jurisdiction, responsibilities, and procedures.	Yes	Yes	Other service or product our agency must/may provide	Defines forest law enforcement jurisdiction, responsibilities, and procedures.
37	48-23-96	State	Statute	Establishes the appointment of officers to carry out law enforcement responsibilities of commission; terms; removal.	No			
38	48-23-97	State	Statute	Establishes that wood load tickets are required for certain ticket sales; exceptions; penalties	No			
39	Chapter 28: The Forest Renewal Program Section 48-28-10	State	Statute	Implementation of cost share. Eligibility of landowners.	Yes	Yes	Other service or product our agency must/may provide	Implementation of cost share. Eligibility of landowners.
40	48-28-20	State	Statute	Establishes the powers and duties of the State Forester in connection with implementation of forest renewal program.	Yes	Yes	Other service or product our agency must/may provide	The State Forester shall implement a forest renewal program to encourage private investments in the improved management of forest lands and resources within the State to ensure adequate future high quality timber supplies, related employment and other economic benefits and the protection, maintenance and enhancement of a productive and stable forest resource system.
41	48-28-30	State	Statute	Definitions of terms related to cost-sharing practices and procedures.	No			
42	48-28-40	State	Statute	Promulgation of rules and regulations; employment and compensation of support personnel; purchase and use of equipment.	No			
43	48-28-50	State	Statute	Establishes the powers and duties of the State Forester in connection with administration of cost-sharing provisions.	No			
44	48-28-60	State	Statute	Establishes rate of cost-sharing payments; maximum payments to eligible landowners; exclusion of land for which federal cost-sharing payments are received.	No			
45	48-28-70	State	Statute	No limitation on woodland acreage of eligible landowner.	No			
46	48-28-80	State	Statute	Landowners required to submit forest management plan and maintain land in forest condition.	No			
47	48-28-90	State	Statute	Governmental agencies ineligible for forest renewal payments.	No			
48	48-28-100	State	Statute	Establishes the Forest Renewal Fund.		Yes	Other service or product our agency must/may provide	There is created in the Commission the forest renewal fund for which fiscal management and responsibility is vested in the State Forester.
49	Chapter 30: Primary Forest Product Assessment Section 48-30-10	State	Statute	Describes how funds will be collected for Forest Renewal Program.	No	No		Describes how funds will be collected for Forest Renewal Program.
50	48-30-20	State	Statute	Creates an assessment on primary forest products processed from South Carolina timber to provide a source of funds to finance the operations provided for in Chapter 18	No			

51	48-30-30	State	Statute	Provides definitions for the Primary Forest Product Assessment Law.	No			
52	48-30-40	State	Statute	Defines assessment on primary forest products; conditions for suspension of assessment.	No			
53	48-30-50	State	Statute	Provides for collection of assessment by Department of Revenue; information and assistance to be provided by State Forester; reimbursement of department for collection costs.	No			
54	48-30-60	State	Statute	Establishes assessment rates.	No			
55	48-30-70	State	Statute	Establishes time and manner of payment of assessments; processors to maintain production records for assessment purposes; confidentiality of records.	No			
56	48-30-80	State	Statute	Establishes for the enforcement of primary forest product assessment.	No			
57	Chapter 33: Forest Fire Protection Act Section 48-33-10	State	Statute	Definitions of forest land/forest fire. The SC Forestry Commission shall direct forest fire protection work. County forestry boards: terms and duties.	Yes	Yes	Other service or product our agency must/may provide	Definitions of forest land/forest fire. The SC Forestry Commission shall direct forest fire protection work. County forestry boards: terms and duties.
58	48-33-20	State	Statute	Defines "forest land."	No			
59	48-33-30	State	Statute	Defines "forest fire."	No			
60	48-33-40	State	Statute	Authorizes the State Commission of Forestry to direct forest fire protection work.	Yes	Yes	Other service or product our agency must/may provide	All forest fire protection work shall be under the direction and supervision of the State Commission of Forestry, through the State Forester, subject to the provisions of this chapter and the laws of the State enacted relative to forestry and forest fire prevention and suppression.
61	48-33-50	State	Statute	Establishes the creation of county forestry boards.	No			
62	48-33-60	State	Statute	Establishes duties and powers of county forestry boards; employees.	No			
63	48-33-70	State	Statute	Establishes plans for forest fire protection; rules and regulations for administration of plans.	Yes	Yes	Other service or product our agency must/may provide	The State Commission of Forestry shall prepare for each county forestry board a plan for forest fire protection for the fiscal year and present such plan at the July meeting of the board. It shall have power to make and enforce all rules and regulations necessary for the administration of forest fire protection.
64	48-33-80	State	Statute	Authorizes access to property by authorized agency personnel and county forestry board members	No			
65	48-33-90	State	Statute	Establishes title to property acquired vested in State Commission of Forestry.	No			
66	Chapter 34: Prescribed Fire Act Section 48-34-10	State	Statute	Establishes requirements for conducting prescribed fires. Established Certified Prescribed Fire Manager course and provides limited liability protection to certified burners. Defines prescribed fire and clarifies the role of the certified burner.	Yes	Yes	Other service or product our agency must/may provide	Establishes requirements for conducting prescribed fires. Established Certified Prescribed Fire Manager course and provides limited liability protection to certified burners. Defines prescribed fire and clarifies the role of the certified burner.
67	48-34-20	State	Statute	Establishes definitions for the South Carolina Prescribed Fire Act.	No			
68	48-34-30	State	Statute	Establishes authority to promulgate regulations.	Yes	Yes	Other service or product our agency must/may provide	The State Commission of Forestry shall promulgate regulations for the use of prescribed fire and for the certification of prescribed fire managers.
69	48-34-40	State	Statute	Establishes requirements for conducting prescribed fire; South Carolina Smoke Management Guidelines.	No			
70	48-34-50	State	Statute	Addresses liability for damages, injury, or loss caused by prescribed fire.	No			
71	48-34-60	State	Statute	Establishes that a person may conduct a prescribed fire without a certified prescribed fire manager present.	No			
72	Chapter 35: Regulation of Fires on Certain Lands Section 48-35-10	State	Statute	Requires notification to the SC Forestry Commission and precautions before conducting outdoor burning. Establishes the ability for State Forester and the Governor to enact burning bans.	Yes	Yes	Other service or product our agency must/may provide	Requires notification to the SC Forestry Commission and precautions before conducting outdoor burning. Establishes the ability for State Forester and the Governor to enact burning bans.
73	48-35-20	State	Statute	Establishes that authorization must be obtained from landowner to conduct burning.	No			
74	48-35-30	State	Statute	Establishes that this chapter is inapplicable to fires within municipalities.	No			
75	48-35-40	State	Statute	Establishes that a person may conduct a prescribed fire without a certified prescribed fire manager present.	No			
76	48-35-50	State	Statute	Establishes that the State Forester may prohibit fires.	Yes	Yes	Other service or product our agency must/may provide	The State Forester may direct at any time, when deemed necessary in the interest of public safety, that fires covered by this chapter not be started.
77	48-35-60	State	Statute	Defines penalties for violating provisions of this chapter.	No			
78	Chapter 36: Best Management Practices Act Section 48-36-10	State	Statute	Sets guidelines for silvicultural activities to protect water quality, soil quality, and productivity, wildlife habitat, and the aesthetic integrity of the forest.	Yes	Yes	Other service or product our agency must/may provide	Sets guidelines for silvicultural activities to protect water quality, soil quality, and productivity, wildlife habitat, and the aesthetic integrity of the forest.
79	48-36-20	State	Statute	Establishes definitions for the South Carolina Forest Best Management Practices Act.	No			
80	48-36-30	State	Statute	Establishes that the State Commission of Forestry is the designated agency in South Carolina to provide public oversight and guidance for technical forest management practices and related activities in laws pertaining to forest lands.	Yes	Yes	Other service or product our agency must/may provide	The commission shall establish Best Management Practices, related monitoring programs, and other programs to assure that forestry practices are in compliance with state and federal regulations.
81	Chapter 37: Southeastern Interstate Forest Fire Protection Compact Section 48-37-10	State	Statute	Allows sharing of wildland firefighting resources between the 13 states in the Southern Region through mutual aid via the Southeastern Interstate Forest Fire Protection Compact.	Yes	Yes	Other service or product our agency must/may provide	Allows sharing of wildland firefighting resources between the 13 states in the Southern Region through mutual aid via the Southeastern Interstate Forest Fire Protection Compact.
82	48-37-20	State	Statute	Establishes terms of the Southeastern Interstate Forest Fire Protection Compact.	No			
83	48-37-30	State	Statute	Establishes the effective date of the Southeastern Interstate Forest Fire Protection Compact.	No			
84	48-37-40	State	Statute	Establishes that the State Forester acts as compact administrator; advisory committee of Southeastern Interstate Forest Fire Protection Compact.	Yes	Yes	Other service or product our agency must/may provide	State Forester to act as compact administrator; advisory committee of Southeastern Interstate Forest Fire Protection Compact.



Service/Product Provided to Customers	Customer Segments	Specify only for the following Segments: (1) Industry: Name; (2) Professional Organization: Name; (3) Public: Demographics.	Divisions or Major Programs	Description
Human Resources, Procurement, Accounts Payable, Accounts Receivable, Finance	Executive Branch/State Agencies		Administration	Provide administrative support, i.e. payroll, benefits, procurement, etc. to agency personnel (SC Code of Laws Title 48, Chapters 23 - 37).
Human Resources, Procurement, Accounts Payable, Accounts Receivable, Finance	General Public	Vendors, Private Citizens	Administration	Provide administrative support, i.e. payroll, benefits, procurement, etc. to agency personnel (SC Code of Laws Title 48, Chapters 23 - 37).
Wildfire suppression, Fire Prevention, Control of forest pests, Damage Assessment, Incident Management, Water Quality Protection	Executive Branch/State Agencies		Forest Protection & Development	Protect forests from harm from wildfires, forest pests, and natural disasters. Maintain a productive forest land base, provide quality tree seedlings, and develop a strong forest industry. (SC Code of Laws Title 48, Chapters 23 - 37).
Wildfire suppression, Fire Prevention, Control of forest pests, Damage Assessment, Incident Management, Water Quality Protection	Legislative Branch		Forest Protection & Development	Protect forests from harm from wildfires, forest pests, and natural disasters. Maintain a productive forest land base, provide quality tree seedlings, and develop a strong forest industry. (SC Code of Laws Title 48, Chapters 23 - 37).
Wildfire suppression, Fire Prevention, Control of forest pests, Damage Assessment, Incident Management, Water Quality Protection	Judicial Branch		Forest Protection & Development	Protect forests from harm from wildfires, forest pests, and natural disasters. Maintain a productive forest land base, provide quality tree seedlings, and develop a strong forest industry. (SC Code of Laws Title 48, Chapters 23 - 37).
Wildfire suppression, Fire Prevention, Control of forest pests, Damage Assessment, Incident Management, Water Quality Protection	Local Govts.		Forest Protection & Development	Protect forests from harm from wildfires, forest pests, and natural disasters. Maintain a productive forest land base, provide quality tree seedlings, and develop a strong forest industry. (SC Code of Laws Title 48, Chapters 23 - 37).
Wildfire suppression, Fire Prevention, Control of forest pests, Damage Assessment, Incident Management, Water Quality Protection	General Public	Private citizens, forest landowners, residents in the wildland-urban interface	Forest Protection & Development	Protect forests from harm from wildfires, forest pests, and natural disasters. Maintain a productive forest land base, provide quality tree seedlings, and develop a strong forest industry. (SC Code of Laws Title 48, Chapters 23 - 37).
Wildfire suppression, Fire Prevention, Control of forest pests, Damage Assessment, Incident Management, Water Quality Protection	Industry	Forest Industry in SC	Forest Protection & Development	Protect forests from harm from wildfires, forest pests, and natural disasters. Maintain a productive forest land base, provide quality tree seedlings, and develop a strong forest industry. (SC Code of Laws Title 48, Chapters 23 - 37).
Forest Management Plans	General Public	All South Carolina citizens, with particular emphasis on landowners owning at least 10 acres of forest	Forest Protection & Development	Protect forests from harm from wildfires, forest pests, and natural disasters. Maintain a productive forest land base, provide quality tree seedlings, and develop a strong forest industry. (SC Code of Laws Title 48, Chapters 23 - 37).
Forest Management and Timber Sale Assistance	Executive Branch/State Agencies		Forest Protection & Development	Protect forests from harm from wildfires, forest pests, and natural disasters. Maintain a productive forest land base, provide quality tree seedlings, and develop a strong forest industry. (SC Code of Laws Title 48, Chapters 23 - 37).
Seedling sales	General Public	Forest landowners, Christmas tree growers	Forest Protection & Development	Protect forests from harm from wildfires, forest pests, and natural disasters. Maintain a productive forest land base, provide quality tree seedlings, and develop a strong forest industry. (SC Code of Laws Title 48, Chapters 23 - 37).
Seed Sales	Industry	Corporate nurseries: Weyerhaeuser, ArborGen, International Forest Seed, K&L Nursery	Forest Protection & Development	Protect forests from harm from wildfires, forest pests, and natural disasters. Maintain a productive forest land base, provide quality tree seedlings, and develop a strong forest industry. (SC Code of Laws Title 48, Chapters 23 - 37).
Courtesy Best Management Practice (BMP) Exam	General Public	Forest landowners	Forest Protection & Development	Protect forests from harm from wildfires, forest pests, and natural disasters. Maintain a productive forest land base, provide quality tree seedlings, and develop a strong forest industry. (SC Code of Laws Title 48, Chapters 23 - 37).
BMP Training	Industry	Timber operations professionals	Forest Protection & Development	Protect forests from harm from wildfires, forest pests, and natural disasters. Maintain a productive forest land base, provide quality tree seedlings, and develop a strong forest industry. (SC Code of Laws Title 48, Chapters 23 - 37).
BMP Monitoring	General Public	Forest landowners	Forest Protection & Development	Protect forests from harm from wildfires, forest pests, and natural disasters. Maintain a productive forest land base, provide quality tree seedlings, and develop a strong forest industry. (SC Code of Laws Title 48, Chapters 23 - 37).
Forest Inventory & Analysis (FIA) data	Industry	All primary forest industry processors	Forest Protection & Development	Protect forests from harm from wildfires, forest pests, and natural disasters. Maintain a productive forest land base, provide quality tree seedlings, and develop a strong forest industry. (SC Code of Laws Title 48, Chapters 23 - 37).
Forest Product Market Reports & data	Industry	Primary and secondary forest product exporters	Forest Protection & Development	Protect forests from harm from wildfires, forest pests, and natural disasters. Maintain a productive forest land base, provide quality tree seedlings, and develop a strong forest industry. (SC Code of Laws Title 48, Chapters 23 - 37).
FIA Woodbasket Analysis	Industry	New or existing primary forest product manufacturers	Forest Protection & Development	Protect forests from harm from wildfires, forest pests, and natural disasters. Maintain a productive forest land base, provide quality tree seedlings, and develop a strong forest industry. (SC Code of Laws Title 48, Chapters 23 - 37).
Economic Contribution of Forestry	General Public	All South Carolina citizens, with particular emphasis on forest landowners	Forest Protection & Development	Protect forests from harm from wildfires, forest pests, and natural disasters. Maintain a productive forest land base, provide quality tree seedlings, and develop a strong forest industry. (SC Code of Laws Title 48, Chapters 23 - 37).
Forest-based recreation	General Public	Visitors to state forests	State Forests	Manage state forests on a sustainable basis to provide multiple benefits and serve as a model for private forest landowners. (SC Code of Laws Title 48, Chapter 23).
Forest products	Industry	Forest products industry	State Forests	Manage state forests on a sustainable basis to provide multiple benefits and serve as a model for private forest landowners. (SC Code of Laws Title 48, Chapter 23).
25% of forest products sales revenue	School Districts		State Forests	Manage state forests on a sustainable basis to provide multiple benefits and serve as a model for private forest landowners. (SC Code of Laws Title 48, Chapter 23).
Non-timber products (ecosystem services such as clean water)	General Public	All citizens	State Forests	Manage state forests on a sustainable basis to provide multiple benefits and serve as a model for private forest landowners. (SC Code of Laws Title 48, Chapter 23).
Wood Magic Forest Fair	School Districts		Education & Information	Increase the public's awareness of the benefits of sustainable forest management, the advantages of forestry, and the values of forests. (SC Code of Laws Title 48, Chapter 23).
Project Learning Tree (PLT)	School Districts		Education & Information	Increase the public's awareness of the benefits of sustainable forest management, the advantages of forestry, and the values of forests. (SC Code of Laws Title 48, Chapter 23).
Forestry/environmental education programs	School Districts		Education & Information	Increase the public's awareness of the benefits of sustainable forest management, the advantages of forestry, and the values of forests. (SC Code of Laws Title 48, Chapter 23).
Information about forests, forest benefits, forest products, forest protection, forest management and practices, resource development and forest science	General Public	All South Carolina citizens, with particular emphasis on landowners owning at least 10 acres of forest	Education & Information	Increase the public's awareness of the benefits of sustainable forest management, the advantages of forestry, and the values of forests. (SC Code of Laws Title 48, Chapter 23).



Agency Name:

FORESTRY COMMISSION

Fiscal Year 2018-2019

Accountability Report

Agency Code and Section:

P120

043

Partner Template

Name of Partner Entity	Type of Partner Entity	Description of Partnership	Associated Goal(s)
American Forest Foundation	Non-Governmental Organization	The American Forest Foundation works on-the-ground with family forest owners, partners and elected officials to promote stewardship and protect the nation's forest heritage.	Develop The Resource Manage The Resource Protect The Resource Raise Awareness About The Resource
ArborGen	Non-Governmental Organization	The SCFC and ArborGen have a 10-year agreement that allows ArborGen to manage and operate Taylor Nursery. The SCFC can designate the sales price for up to 5 million seedlings to be planted in South Carolina.	Develop The Resource
Association of Consulting Foresters	Professional Association	The SCFC assists this partner in setting up training and outreach programs for foresters.	Develop The Resource Manage The Resource Protect The Resource Raise Awareness About The Resource
Audubon South Carolina	Non-Governmental Organization	South Carolina chapter of the National Audubon Society that works to protect birds and their habitats using science, advocacy, education and on-the-ground conservation.	Develop The Resource Manage The Resource Protect The Resource Raise Awareness About The Resource
Board of Registered Foresters - LLR	State Government	SCFC partners with LLR and the Board of Registered Foresters in helping to ensure SCFC foresters hired achieve registration within two years of employment	Manage The Resource Prepare To Meet Future Demands
Center For Heirs Property Preservation	Non-Governmental Organization	Non-profit that protects heirs' property and promotes its sustainable use to provide increased economic benefit to historically under-served families.	Develop The Resource Manage The Resource Protect The Resource Raise Awareness About The Resource
Clemson Extension Service - Forestry & Nat. Res. Extension	Higher Education Institute	SCFC cooperates with and coordinates forestry educational efforts with Forestry and Natural Resource Extension agents for timberland owners	Manage The Resource Protect The Resource Raise Awareness About The Resource
Clemson University	State Government	The SC Forestry Commission has agreements with Clemson University for insect and disease control, landowner outreach, disaster response, guest lecturers, and wood use and design.	Develop The Resource Manage The Resource Protect The Resource
Councils of Government	Local Government	SCFC Urban & Community Forestry staff work with the local COGs to facilitate planning at the county level.	Manage The Resource Raise Awareness About The Resource
County and State Forestry Advisory Boards	State Government	County Forestry Boards (COBs) are legally constituted boards to serve in an advisory capacity to the SC Forestry Commission in all matters relative to the general forestry program in South Carolina. Provisions for establishment of these COBs are found in the 1976 Code of Laws of South Carolina, as amended, Title 48, Chapter 33, known as the "South Carolina Forest Fire Protection Act," which became law in April, 1945. The Forestry Commission looks upon COBs as representing the people of the county in all matters pertaining to forestry and through the State Advisory Committee of COBs they serve in an advisory capacity to the Forestry Commission in all phases of forestry, including forest fire control, forest management, reforestation, information and education, research, forest insect and disease control, etc.	Develop The Resource Manage The Resource Protect The Resource Raise Awareness About The Resource Prepare To Meet Future Demands
Foresters Council	Professional Association	The Foresters Council of South Carolina provides an organized and representative group of technical foresters to initiate action and act in an advisory capacity in matters pertaining to the development of the forest resources, the welfare of forest landowners, and processors of forest products in the state.	Develop The Resource Manage The Resource Protect The Resource Raise Awareness About The Resource
Heritage Trust Advisory Board	State Government	An advisory board of the SC Dept. of Natural Resources, the Heritage Trust Advisory Board protects significant natural and cultural lands in South Carolina. The SC Forestry Commission partners with the Heritage Trust Advisory Board in making and evaluating recommendations regarding management criteria and allowable uses for natural areas and features.	Develop The Resource Manage The Resource
International Society of Arboriculture	Non-Governmental Organization	The SCFC assists this partner in setting up training and outreach programs with regard to standards for arborists.	Manage The Resource Raise Awareness About The Resource
Longleaf Alliance	Non-Governmental Organization	SCFC partners with the Longleaf Alliance to promote restoration of longleaf pine across its range in South Carolina. LLA provides training for SCFC foresters and partners with SCFC on landowner outreach.	Manage The Resource
National Association of State Foresters	Professional Association	The National Association of State Foresters is a non-profit organization composed of the directors of forestry agencies in the states, territories and the District of Columbia of the United States. The SC Forestry Commission partners with NASF, along with its counterpart state agencies, to serve as the primary delivery system for national-scale forestry-related initiatives and activities.	Develop The Resource Manage The Resource Protect The Resource Raise Awareness About The Resource
National Park Service	Federal Government	The SCFC and USFS cooperate on wildfire suppression, fire prevention, federal excess equipment, and training through a Cooperative Agreement.	Manage The Resource Protect The Resource

National Wild Turkey Federation	Non-Governmental Organization	SC Forestry Commission works with NWTF on landowner outreach and various forestry issues. SCFC also partners with NWTF on nursery and tree improvement projects.	Manage The Resource Protect The Resource Raise Awareness About The Resource
Quality Deer Management Association(QDMA)	Non-Governmental Organization	The SCFC partners with QDMA to provide hunting opportunities to special groups(i.e. active and retired military). QDMA is also a key partner in disseminating information on forestry and conservation.	Manage The Resource Protect The Resource Raise Awareness About The Resource
SC Association of Conservation Districts	Non-Governmental Organization	The SCFC receives advice from the SC Association of Conservation Districts on the Forest Stewardship Program and conservation issues.	Manage The Resource
SC Biomass Council	Non-Governmental Organization	The SC Forestry Commission maintains a membership in the SC Biomass Council and has provided leadership in raising awareness about the availability and benefits of biomass energy.	Develop The Resource Raise Awareness About The Resource
SC Chamber of Commerce	Non-Governmental Organization	SCFC is a member of the SC Chamber of Commerce whose mission is to advocate for business interests in the state and promote economic development. The SCFC represents the forestry community of landowners, forestry professionals and manufacturers.	Develop The Resource
SC Christmas Tree Grower's Association	Professional Association	The SC Forestry Commission's Nursery & Tree Improvement Program produces seedlings for the Christmas Tree growers in South Carolina.	Develop The Resource
SC Department of Agriculture	State Government	Agribusiness projects; outreach to farmers through landowner programs	Develop The Resource Manage The Resource
SC Department of Commerce	State Government	The SC Forestry Commission has an MOU with the SC Department of Commerce to work together to grow the impact of forestry to the state's economy.	Develop The Resource
SC Department of Health and Environmental Control	State Government	Memorandum of Understandings in place related to air quality (prescribed fire and smoke management) and related to water quality (Forestry Best Management Practices).	Develop The Resource Manage The Resource
SC Department of Natural Resources	State Government	SC Forestry Commission provides forest management assistance to the SC DNR including timber sale assistance, prescribed burning, and firebreak plowing. The agencies also have an agreement regarding Wildlife Management Areas. SC Forestry Commission is a cooperating agency in SC Quail Council and the Heritage Trust Advisory Board.	Manage The Resource
SC Economic Developers Association	Professional Association	The SC Forestry Commission maintains a membership in the SC Economic Developers Association and works with its members at the state, regional and local levels on forestry-related economic development projects.	Develop The Resource
SC Emergency Management Division	State Government	SC Forestry Commission is the lead for ESF-4, Wildland Firefighting, and participates in state-level activations of the state emergency operations center. Provide input to response plans, staffing at SEOC, expertise on incident management, firefighting, and assist with response to natural and man-made disasters. Provide law enforcement support, aircraft support, and debris removal crews after hurricanes and when lane reversal operations occur. EMD supports the SC Forestry Commission when large wildfires occur, assisting with resource requests and interfacing with FEMA.	Protect The Resource
SC Farm Bureau	Private Business Organization	SC Farm Bureau and SCFC work with policies and advisory committees in forestry-related issues.	Develop The Resource Manage The Resource Protect The Resource Raise Awareness About The Resource
SC Geographic Information Council (SCGIC)	State Government	The SC Forestry Commission partners with SCGIC to help coordinate activities among and between all other agencies in the state that perform geographical information systems (GIS) duties. This coordination includes spatial data collection and management, standards development and data and information sharing. Cooperating council members include: Aeronautics Commission, DHEC, DNR, Revenue and Fiscal Affairs, DOR, DOT, EMD, Santee Cooper, SLED, DPS, USC-Institute for Families in Society, Army National Guard and the State Mapping Advisory Committee.	Manage The Resource
SC Law Enforcement Division - SLED	State Government	Provide state incident management team to support response to man-made or natural disasters. Coordinate response, account for responders, and formulate plans for incidents. use SLED helicopter equipped with Bambi bucket provided by the SC Forestry Commission under the existing MOU to suppress wildland fires. Provide law enforcement assistance to SLED as requested for support of hurricanes and other disasters.	Protect The Resource
SC National Guard	State Government	Conduct annual joint training. Participate in tabletop and functional exercises to prepare for wildland firefighting. During high wildfire periods, use SC NG aircraft equipped with Bambi buckets to suppress wildfires and protect homes from damage. Provide military appreciation hunts and forestry awareness programs.	Protect The Resource
SC Nature Conservancy	Non-Governmental Organization	The SCFC and SC Nature Conservancy cooperate on conservation issues relating to policies and land acquisitions. This group also supports our education and outreach programs.	Develop The Resource Manage The Resource Protect The Resource Raise Awareness About The Resource
SC Nursery & Landscape Association	Non-Governmental Organization	The SCNLA works with the SCFC to provide better nursery stock and species selected for given locations. This involves training and outreach programs.	Develop The Resource
SC Palmetto Agribusiness Council	Non-Governmental Organization	Agribusiness projects	Develop The Resource Manage The Resource Protect The Resource Raise Awareness About The Resource
SC Rural Water Administration	Non-Governmental Organization	The SCFC provides pass-through funding from LSR Grant to SCRWA to raise awareness of importance of forestry in protecting water quality downstream.	Protect The Resource

SC Timber Producers Association	Professional Association	The SC Forestry Commission's Environmental Management staff holds Best Management Practices training program for loggers and foresters.	Develop The Resource Manage The Resource Protect The Resource Raise Awareness About The Resource
SC Tree Farm Program	Professional Association	SCFC provides members to the state Tree Farm Committee, conducts Tree Farm inspections, and works closely with Tree Farm on landowner outreach and recognition. State Forests are certified in Tree Farm program.	Manage The Resource Protect The Resource Raise Awareness About The Resource
SC Wildlife Federation	Non-Governmental Organization	SCFC works with this partner to make and revise policies that relate to the conservation of forest lands.	Manage The Resource Protect The Resource Raise Awareness About The Resource
Society of American Foresters (SAF) - SC Division	Professional Association	SCFC supports SAF membership of foresters by encouraging them to join and participate in SAF sponsored events	Develop The Resource Manage The Resource Protect The Resource Raise Awareness About The Resource Prepare To Meet Future Demands
South Carolina Ports Authority	State Government	The SC Forestry Commission cooperates with the SC Ports Authority on international trade issues for forest products.	Develop The Resource
South Carolina State Firefighters' Association	Professional Association	SCSFA represents fire departments across the state, and is a key partner in disseminating information, joint training, and mobilization of resources.	Protect The Resource
Southern Group of State Foresters	Non-Governmental Organization	The SC Forestry Commission is a member of the Southern Group of State Foresters (SGSF) and provides staff to serve on SGSF committees. SCFC staff currently chair two SGSF committees.	Develop The Resource Manage The Resource Protect The Resource Raise Awareness About The Resource
Stewardship Coordinating Committee	Non-Governmental Organization	Stewardship Coordinating Committee and the SCFC partner to advise the state foresters on the Forest Stewardship program and the Forest Action Plan.	Develop The Resource Manage The Resource Protect The Resource Raise Awareness About The Resource
Sustainable Forestry Initiative	Non-Governmental Organization	The Sustainable Forestry Initiative is an independent, nonprofit organization solely responsible for maintaining, overseeing and improving the internationally recognized SFI certification program. The SC Forestry Commission partners with SFI, particularly through its state implementation committee, both to certify its own forests to the SFI standard and to work with local organizations and individuals in providing leadership and best practices to improve forest management on both certified and uncertified lands.	Develop The Resource Manage The Resource Protect The Resource Raise Awareness About The Resource
The Conservation Fund	Non-Governmental Organization	SCFC works with this partner to make and revise policies which relate to the conservation of rural lands and conservation easements. The SCFC also partners with The Conservation Fund to purchase land.	Develop The Resource Manage The Resource
The Forestry Association of South Carolina	Non-Governmental Organization	SC Forestry Commission works with South Carolina Forestry Association staff and members on numerous resource development projects, forest management issues, legislative issues, and landowner outreach.	Develop The Resource Manage The Resource Protect The Resource Raise Awareness About The Resource
The Nature Conservancy	Non-Governmental Organization	SCFC partners with The Nature Conservancy on conservation projects across South Carolina.	Manage The Resource Protect The Resource
Trees SC	Non-Governmental Organization	SCFC and Trees SC have an MOU through which SCFC provides funding to Trees SC from a US Forest Service grant to conduct educational workshops and increase awareness of the importance of urban forestry.	Manage The Resource Raise Awareness About The Resource
University-based Research Cooperatives	Higher Education Institute	The SC Forestry Commission maintains membership in university-based cooperative research programs at NC State for access to research on tree improvement, nursery production, and forest growth models.	Develop The Resource Manage The Resource
US Endowment for Forestry & Communities, Inc.	Non-Governmental Organization	SCFC partners with the US Endowment for Forestry & Communities whose mission is to work with the public and private sectors to improve the health and vitality of the nation's working forests and forest-reliant communities.	Develop The Resource Manage The Resource Protect The Resource Raise Awareness About The Resource
US Fish & Wildlife Service	Federal Government	The SCFC and US Fish & Wildlife Service cooperate on wildfire suppression, fire prevention, federal excess equipment, and training through a Cooperative Agreement.	Manage The Resource Protect The Resource
USDA APHIS	Federal Government	The SC Forestry Commission's Marketing Program works with USDA APHIS on phytosanitary treatment issues related to forest product international trade. SCFC Forest Health program works with APHIS to combat forest pests and invasive species.	Manage The Resource Protect The Resource Raise Awareness About The Resource
USDA Farm Service Agency	Federal Government	SCFC provides technical assistance to landowners who are participating in FSA programs such as EFRP and CRP. SCFC and FSA currently have an agreement through which FSA reimburses SCFC for costs associated with providing this assistance.	Manage The Resource



Agency Name: FORESTRY COMMISSION

Fiscal Year 2018-2019  
Accountability Report

Agency Code: P120 Section: 043

Report and External Review Template

Item	Is this a Report, Review, or both?	Report or Review Name	Name of Entity Requesting the Report or Conducting Review	Type of Entity	Reporting Frequency	Current Fiscal Year: Submission Date or Review Timeline (MM/DD/YYYY)	Summary of Information Requested in the Report or Reviewed	Method to Access the Report or Information from the Review
1	Internal Review and Report	Accountability Report	Executive Budget Office	State	Annually	September 15, 2018	Identify key program area descriptions and expenditures and link those to key financial and performance results measures.	<a href="http://www.trees.sc.gov/reports/scfaccountabilityreportFY2017-18.pdf">www.trees.sc.gov/reports/scfaccountabilityreportFY2017-18.pdf</a>
2	Internal Review and Report	Annual report to General Assembly	General Assembly, via statute	State	Annually	January 1, 2019	Report on the state of forestry in South Carolina, including updates on agency operations, the health and productivity of SC forestland, budget request items for upcoming fiscal year.	<a href="http://www.trees.sc.gov/reports/www.trees.sc.gov/reports/scfannualreport2019.pdf">www.trees.sc.gov/reports/www.trees.sc.gov/reports/scfannualreport2019.pdf</a>
3	External Review and Report	Debt Collection Report	Senate Finance and Ways and Means	State	Annually	February 28, 2019	Report detailing agency's amount of outstanding debt and all methods it has used to collect that debt.	<a href="http://www.trees.sc.gov/reports/scfdebtcollectionreport2018.pdf">www.trees.sc.gov/reports/scfdebtcollectionreport2018.pdf</a>
4	External Review and Report	IT Data Collection and Planning System	Department of Administration per Executive Order 2016-07 and Budget Proviso 117.114	State	Annually	August 5, 2019	Report on agency's information technology and budget including IT inventory; previous year's, planned current year and projected next year's IT expenditures and IT personnel. Data is to link to with agency's related EBO B1/B2 Form for DTO review and approval. System is also used for IT procurements of \$50,000 or more to for DTO review and recommendation.	OnBase platform on the South Carolina Enterprise Information System at <a href="https://sceisgateway.sc.gov">https://sceisgateway.sc.gov</a>
5	Internal Review and Report	FY2018-19 Fines & Fees Report	Senate Finance / House Ways and Means committee chairs	State	Annually	September 1, 2019	Report documenting fees and fines collected by the agency during the fiscal year for registrations & rentals, services performed and user fees	<a href="http://www.trees.sc.gov/reports/scfinesandfeesreport.pdf">www.trees.sc.gov/reports/scfinesandfeesreport.pdf</a>
6	External Review and Report	Federal Excess Personal Property (FEPP) Audit & Review	US Department of Agriculture	Federal	Biannually	currently in process	personal property management reviews of the SC Forestry Commission's FEPP program to ensure compliance with all federal and departmental regulations, policies and procedures.	report not yet finalized by USDA
7	External Review and Report	Report on Applying Agreed-Upon Procedures	SC Office of State Auditor	State	Annually	near end of each fiscal year	Report on agreed-upon procedures of the agency with regard to cash receipts/revenues, cash disbursements/non-payroll expenditures, journal entries and transfers, surety bond transactions, cost-share fund administration,	<a href="http://www.trees.sc.gov/reports/scfagreeduponproceduresreport.pdf">www.trees.sc.gov/reports/scfagreeduponproceduresreport.pdf</a>