

AGENCY NAME:	CLEMSON UNIVERSITY		
AGENCY CODE:	H120	SECTION:	014

Fiscal Year 2020–2021 Accountability Report

SUBMISSION FORM

I have reviewed and approved the data submitted by the agency in the following online forms:

- Reorganization and Compliance
- Strategic Plan Results
- Strategic Plan Development
- Legal
- Services
- Partnerships
- Report or Review

I have reviewed and approved the financial report summarizing the agency's budget and actual expenditures, as entered by the agency into the South Carolina Enterprise Information System.

The information submitted is complete and accurate to the extent of my knowledge.

AGENCY DIRECTOR (SIGN AND DATE):	Signature on file.
(TYPE/PRINT NAME):	James P. Clements, President

BOARD/CMSN CHAIR (SIGN AND DATE):	Signature on file.
(TYPE/PRINT NAME):	Kim A. Wilkerson

FY 2020-2021 Agency Accountability Report
Reorganization and Compliance Responses:

These responses were submitted for the FY 2020-2021 Accountability Report by the

CLEMSON UNIVERSITY

Primary Contact:

First Name	Last Name	Role/Title	Phone	Email Address
Jeremy	King	Associate Provost for Institutional Effectiveness	864-934-3554	jking2@clemsn.edu

Secondary Contact

First Name	Last Name	Role/Title	Phone	Email Address
Carla	Bennett	AVP Academic Finance & Administration	864-656-3791	cfbenne@clemsn.edu

Agency Mission

Clemson University was established to fulfill our founder's vision of 'a high seminary of learning' to develop 'the material resources of the State' for the people of South Carolina. Nurtured by an abiding land grant commitment, Clemson has emerged as a research university with a global vision. Our primary purpose is educating undergraduate and graduate students to think deeply about and engage in the social, scientific, economic, and professional challenges of our times. The foundation of this mission is the generation, preservation, communication, and application of knowledge. The University also is committed to the personal growth of the individual and promotes an environment of good decision-making, healthy and ethical lifestyles, and tolerance and respect for others. Our distinctive character is shaped by a legacy of service, collaboration, and fellowship forged from and renewed by the spirit of Thomas Green Clemson's covenant.

Adopted in: 2013

Agency Vision

Clemson will be one of the nation's top-20 public universities.

Adopted in: 2013

Recommendations for reorganization requiring legislative change.

No

Please list significant events related to the agency that occurred in FY 2020-2021.

Month Started	Month Ended	Description of Event	Agency Measures Impacted	Other Impacts
July	June	A new Executive Leadership concentration was added to our PhD Management degree	PhD degrees awarded	
July	June	A Digital Brand Communications concentration was added to our MBA program	None	Increased ROI for students and our workforce partners
July	June	A new MS in Medical Device Reprocessing degree program was added	None	Increased ROI for students and our workforce partners
July	June	A new BS in Human Capital Development was added	Graduation rate	Enhanced pathways from technical college system and enhancing workforce development for our workforce partners
July	June	A new Post-Baccalaureate certificate in Digital Technologies and Construction Automation was initiated	None	Increased ROI for students and our workforce partners
July	June	A new Post-Baccalaureate certificate program in Design & Computational Modeling of Geophysical Systems was initiated	None	Increased ROI for students and our workforce partners
July	June	A new baccalaureate certificate in Orthopaedic Medical Device Product Specialist was initiated	None	Increased ROI for students and our workforce partners
July	June	New Post-Baccalaureate certificates in Literacy Coach and Literacy Specialist were initiated	None	Increased ROI for students and our workforce partners and for SC K12 participants
July	June	A new baccalaureate Chapman Leadership program was initiated	None	Increased ROI for students and our workforce partners
		A new baccalaureate certificate program Beef Cow Calf Management was initiated	None	Increased ROI for students and our workforce partners

These responses were submitted for the FY 2020-2021 Accountability Report by the

CLEMSON UNIVERSITY

Does the agency intend to make any other major reorganization to divisions, departments, or programs to allow the agency to operate more effectively and efficiently in FY 2021-22?

Note: It is not recommended that agencies plan major reorganization projects every year. This section should remain blank unless there is a need for reorganization.

Yes

The University continues to evaluate all of its academic programs, departments, and administrative structures looking for value-added opportunities for expansion, closure/termination, and reorganization/merger. In particular, a significant number of low-enrollment academic programs are in the process of being closed-- a process that should be complete in FY22.

Is the agency in compliance with S.C. Code Ann. § 2-1-220, which requires submission of certain reports to the Legislative Services Agency for publication online and the State Library? See also S.C. Code Ann. § 60-2-20.

Yes

If not, please explain why.

Is the agency in compliance with various requirements to transfer its records, including electronic ones, to the Department of Archives and History? See the Public Records Act (S.C. Code Ann. § 20-1-10 through 20-1-180) and the South Carolina Uniform Electronic Transactions Act (S.C. Code Ann. § 26-6-10 through 26-10-210).

Yes

Does the law allow the agency to promulgate regulations?

Yes

Please list the law number(s) which gives the agency the authority to promulgate regulations.

59-119-50;59-119-310

Has the agency promulgated any regulations?

Yes

Is the agency in compliance with S.C. Code Ann. § 1-22-120(J), which requires an agency to conduct a formal review of its regulations every five years?

Yes

Agency Accountability Report Narrative

Clemson University, FY2020-21

STATEWIDE ENTERPRISE STRATEGIC OBJECTIVES

The University has explicitly integrated three statewide enterprise strategic objectives into its own strategic and tactical planning, operations, management, and assessment.

- *Education, Training and Human Development:* the University endeavors, as its primary mission, to elevate the educational preparedness of South Carolinians to lead productive and healthy lives. An important component of this is ensuring that our students have pathways for success in their professional careers and in their communities as thought leaders and citizens.
- *Public Infrastructure and Economic Development:* the University continues to build a world-class infrastructure of knowledge, wisdom, physical, and human resources to serve South Carolina's citizens and to promote South Carolina as a globally competitive location for business, innovation, and living.
- *Healthy and Safe Families:* the University contributes to the health, development, and safety of South Carolina families in myriad ways including: food security through research, educational programming, and supporting cooperative extension; developing talented personnel and research-proven programs to improve the effectiveness of PK-12 education; and supporting personal and public health via research programs and practitioner education.

CLEMSONFORWARD: A S.M.A.R.T PLAN

The statewide enterprise objectives and its S.M.A.R.T. (Specific, Measurable, Attainable, and Time-bound) framework for objectives are integrated components of our ClemsonFORWARD strategic plan, which has four principal parts—each of which has quantitative targets to be achieved over a 10-year time frame:

Research: Solving REAL Problems

- Promote a culture of discovery by raising research expectations and rewards for excellence.
- Invest in six core areas to address 21st century challenges: advanced materials; cyber infrastructure and big data science; energy, transportation, and advanced manufacturing; health innovation; human resilience; and the sustainable environment.
- Increase sponsored program award proposals and sponsored program research expenditures.
- Increase scholarly publication and citation measurement.

Engagement: Providing REAL Experience

- Nurture, enhance, and expand evidence-based academic engagement.
- Build a campus-wide global engagement infrastructure.
- Enhance engagement opportunities outside the classroom.

Academic Core: Sustaining REAL Quality

- Revise our General Education curriculum.
- Enhance integrated interdisciplinary education through a new Grand Challenge minors program.
- Increase the number of high-quality, nationally prominent graduate programs.

AGENCY NAME:	CLEMSON UNIVERSITY		
AGENCY CODE:	H120	SECTION:	014

• Personalize academic advising.

- Increase graduation and retention rates of undergraduate students.
- Increase doctoral degree production.

Living: Building REAL Family

- Build a climate that attracts and retains a more diverse student body, faculty, and staff.
- Lead the nation in professional quality of life and in compensation programs that recognize and reward performance.

Robust internal tracking and inclusion of many of these metrics into the State Accountability Report monitors and shares our progress towards, and holds us accountable for, specific, measurable targets associated with Clemson *FORWARD*. These measures comprise the goals in the strategic planning and monitoring component of the University's Accountability Report.

UNIVERSITY PERFORMANCE

Accountability Report Strategic Planning Measures

FY20-21 saw continued historic achievement in the undergraduate student success measures in the accompanying Strategic Planning component of this report. Freshman retention slightly exceeded target in reaching an historic high levels of 93.6%. Similarly, our 6-year and 4-year graduation rates exceeded target and are once again at new all-time high levels of 84.9% and 65.2%, respectively—far exceeding the mean values of national public universities.

During FY21, the University continued to surpass its ambitious 2026 goal of \$100M in research expenditures. The fiscal year's expenditure total stood at \$105.3M, far surpassing this year's \$85M target value that was set several years ago as part of the University's strategic plan.

The FY21 values for the portion of the undergraduate student body that are underrepresented minorities (14.7%) and non-majority (19.8%) once again stood at new historically high levels. Both of these measures of the equity of reach of our primary services exceeded or were at (URM) or slightly below (non-majority) this fiscal year's target values. The proportion of our graduate student body comprising underrepresented minorities increased by 140 basis points from last year to 12.1%, exceeding the FY21 target value by 10 basis points.

The number of underrepresented minority faculty decreased slightly (from 109 to 105) in FY21, and fell short of this year's target (135) established as part of the University's strategic plan. The University continues its participation in a federally-funded grant initiative aimed at recruiting, developing, mentoring, and retaining underrepresented faculty members. Additionally, the University continues its development of new data feeds and management tools to inform and track the level of diversity in its faculty candidate pools.

Scholarly productivity (as measured by per faculty journal articles and conference proceedings) increased in FY21 over FY20 levels, but fell below the year's target values. The University has provided its college deans and associate deans with new analytical tools that enable them to benchmark the scholarly productivity in their departments and academic doctoral programs over time and against national peers. FY21 saw the completion of the University's rollout of these tools out to academic department chairs, who can employ critical data and national benchmarking at a "local" disciplinary level. The University refreshed and is beginning a relaunch of data tools to identify scholarly collaborators within the University and nationally, find or have pushed to them (via text/e-

mail) potential grant funding opportunities at an individual faculty member level, and identify honorific award nomination opportunities.

External grant funding requests continued rising in FY21 compared to FY20: to \$762M from \$734M, and exceeded the highly ambitious target set as part of the University's strategic plan. While we continue to monitor this measure, its strategic importance has diminished from our initial judgment of its value as the success rate of our funding requests has exceeded expectations by a factor of two.

Clemson*FORWARD* Support Initiatives

There are several foundational elements that support and serve as accelerators for Clemson*FORWARD*. These include: a strategic operational focus; a commitment to accountability in serving as a prudent steward of resources; strategic and entrepreneurial revenue growth; and unwavering attention to academic success. Notable progress with these foundational elements was made during the past fiscal year. Examples include:

- The University processed the termination of numerous low-demand academic programs and concentrations, continuing data-driven analysis of our program portfolio initiated 3 years ago to identify those components to be considered for accelerated growth, continued maintenance, enhanced assessment, or termination. Work was completed on an enhanced analytics tool to look at programmatic and departmental outcomes and return. Work was initiated and completed to development data analytic tools supporting examination and review of individual courses having low enrollment and/or demand.
- We continued to initiate a limited number of select entrepreneurial revenue-generating graduate programs aligned with high-demand workforce needs. During FY21, we continued the refinement and use of analytical tools that integrate labor market, employment, and degree production data in order to focus on high-demand, low-supply niches. As in previous years, a significant proportion of the anticipated new revenues are directed towards supporting PhD programs that generate new knowledge, provide graduate training, and produce original scholarly work.
- Our suite of new teacher residency-based MAT degrees and an education systems improvement EdD program became operational with online delivery, thus increasing the geographic reach of these critical P12 education-related academic programs across the State. Enrollment in the MAT Teacher Residency programs initiated at 41 students while enrollment in the EdD program rose over 81% from 32 to 58 students. Our new online graduate certificate in Online Teaching enrolled 127 students in its first semester.
- The University began organizing and assembling its compliance report for its 10-year accreditation reaffirmation review by its accreditor, the Southern Association of Colleges and Schools Commission on Colleges. Part of this work includes the development of a required Quality Enhancement Plan.
- Work was completed on revising the University's required General Education curriculum. This curriculum, given the appellation Crossings, provides the academic structure whereby skills, knowledge, and intellectual development acquired in the general education curriculum crosses with those in the major course of study, and outlines three broad areas for the development of Clemson undergraduates' communication, ways of knowing, and engagement with global challenges.
- Efforts continued in enhancing and deploying enhanced analytical tools aligned with the core business of the University. Examples of these resources include tools permitting on-the-fly analyses of classroom and laboratory space use; predicted enrollment, retention, and graduation rates; near-real time data on undergraduate and graduate admissions; course enrollments and section size distribution.

Building Futures:

Building state-of-the-art facilities, renovating aging structures, and creating multi-functional spaces that support a vibrant academic community are critical to the success of Clemson *FORWARD*. Significant activities in enhancing our physical infrastructure during FY21 included:

- Board of Trustee approval and initiation of State approval processes of a \$21 million pedestrian safety project with a preliminarily scheduled completion timeframe of summer 2023. The project will widen the heavily trafficked Perimeter Road, which serves as a critical campus gateway to both day-to-day University citizens and to the public during sporting events, to four lanes. This widening effort will include design and construction of multimodal paths for bikes and pedestrians, and upgrade all traffic lights on Perimeter Road to smart signals. Emergency call boxes and safety lighting will also be installed during the project, which will also provide a connection to the City of Clemson's portion of the Green Crescent Trail.
- Construction of the Samuel J. Cadden Chapel neared completion. The 5100 sq ft non-denominational facility consists of two levels, and provides a warm inviting space for people of any belief to engage in meditation, reflection, and celebration. The accompanying gardens will provide a serene natural area for anyone who prefers to reflect in the midst of nature.
- FY21 saw the initiation of a major facelift to the heart of Clemson's campus—specifically the workhorse Daniel Hall building. Construction began on a new 60,000 sq ft addition to Daniel Hall; this addition will include new classrooms, a 220-seat auditorium, faculty offices, and collaborative learning spaces. Completion of the addition will be followed by revitalizing the extant Daniel Hall facility. This renovation will enhance accessibility, update and improve HVAC and fire protection systems, upgrade Daniel Hall's existing auditorium, and replace exterior doors.
- FY21 closed with the University anxiously awaiting Phase 2 approval to move forward with improvements to Memorial Stadium. This project will upgrade the videoboard and sound system, improve the eastern end pedestrian pathway, enable construction of a new WestZone concourse club, and lead to football locker room renovations that more than double current square footage.

University Fundraising

The University had another extraordinary record-breaking fundraising year—our fifth consecutive year eclipsing \$150 million, and tenth consecutive year eclipsing \$100 million. Private gifts to Clemson University totaled \$202.4 million this fiscal year, and included more than \$24 million in cash to endowment, 21 gifts of \$1 million or more, unrestricted donations of \$3.6million, and 43 planned gifts, and a record \$76.3 for IPTAY in support of our nearly 500 Clemson student-athletes in our 19-sport athletic program. Particularly notable is that the FY20 fundraising level represents a continuing increased level in philanthropic giving five years following the close of our Will to Lead capital campaign, as our donors and supporters found a way to engage with our students, faculty, and staff to support the Clemson Experience.

In total, 34,628 members of the Clemson University community adapted to the challenges of this past year and showed their support with 92,127 total gifts. These gifts will support initiatives that include 115 new scholarships/fellowships and the creation of 85 new endowments. FY2021 saw our third-annual Give Day (4/21/21), which had to be postponed in FY20 due to the COVID-19 pandemic, produce \$1.8 million for 2088 donors. FY21 saw an enviably high 16.9% alumni participation rate, an increase from FY20. The gifts received make it possible for Clemson to provide the student support, academic resources, and facilities that are commensurate with its standing as one of the finest public universities in the country.

Building on the FY18 launch of the Cornerstone Partners for Academics program, modeled after the successful Cornerstone Partners for Athletics program, FY21 saw 4 new critical Academic Cornerstone gift this year. These included: a \$60 million gift from the Wilbur O. and Ann Powers (the largest gift ever given to Clemson) to support the College of Business and its new premier campus facility; a \$3 million gift to the College of Architecture, Arts, and Humanities from Laura and Bill Pelham; and a \$2.5 million from Amy and Mitchell Scott for the first Academic Cornerstone gift given to the College of Agriculture, Forestry and Life Sciences.

FY21 saw the establishment of an additional 6 new Athletic Cornerstone partnerships. In conjunction with the IPTAY gifts, these contributions from our loyal donors are directly promoting our student-athletes through robust facilities, scholarships, academic support services, strength and conditioning, life skills, nutrition services, and more.

University Athletics

Clemson Athletics was able to enjoy a fortunate year in several ways while navigating the pandemic and its many uncertainties. Financially, Clemson Athletics faced a significant shortfall in revenue, largely due to reduced football ticket sales from a stadium operating at 20% capacity. However, we were able to retain nearly 90% of IPTAY revenue and finish with a \$19.5 million gap. Clemson reduced nearly \$15 million in expenses.

A school-record 333 Clemson student-athletes were named to the 2020-2021 academic year ACC Honor Roll, which comprises students who participated in a varsity-level sport and registered a GPA of 3.0 or better for the full year. Clemson Athletics had an all-time department high GPA of 3.25 in Fall 2020 and a second all-time department high of 3.15 in Spring 2021 (excluding Spring 2020 COVID term of 3.57).

Our student-athletes recorded an all-time high graduation rate of 93%. Thirteen teams reported a perfect single year Academic Progress Rate of 1000: Baseball, Men's Basketball, Men's Cross Country, Men's Golf, Men's Track (Indoor and Outdoor), Women's Cross Country, Women's Golf, Women's Track (Indoor and Outdoor), Women's Soccer, and Volleyball.

Eleven teams set GPA records. During the Fall 2020 term, those teams included Football, Women's Golf, Women's Soccer, Men's Tennis, Men's Track, Volleyball, and Rowing. Teams that set all-time team GPA records in the Spring 2021 term included Men's Track and Softball. Six teams reported a perfect score of 1000 multi-year Academic Progress Rate scores. Those teams include Baseball, Football, Men's Cross Country, Men's Golf, Women's Golf, and Women's Tennis.

While Clemson Football appeared in a sixth consecutive college football playoff and had the number-one overall pick in the NFL for the first time ever, we also claimed four team ACC Championships - Football, Men's Soccer, Men's Golf and Softball. In competition, 11 of Clemson's programs participated in postseason events, including NCAA appearances in Men's Soccer, Women's Soccer, Softball, Men's Basketball, Men's Indoor Track, Men's Outdoor Track, Women's Indoor Track, Women's Outdoor Track, Men's Golf and Women's Golf. This led to Clemson's best finish in the Learfield Directors' Cup since 2007.

Men's Soccer won the ACC Championship and had a program record of seven players named to the ACC All-Academic Team. George Marks was named two-time CoSIDA Academic All-District Honoree for the first time in Clemson history. Kimarni Smith was the nation's leader in points (19) and goals (8). Smith was the ACC Tournament Offensive MVP and earned first-team all-conference honors. Additionally, Clemson had two Olympic medalists. Patricia Mamona won silver for Portugal in the Triple Jump. Kailen Sheridan won gold in soccer for Canada.

Women's Soccer finished the season in the NCAA Quarterfinals. The season finished with 10+ wins for the seventh time under Eddie Radwanski. Megan Bornkamp earned third-team All-ACC and ACC All-Freshman Team honors. Also, Bornkamp had the most goals scored by a freshman in the ACC in 2020.

Men's Basketball earned NABC Team Academic Excellence Award, along with six players earning Honors Court recognition. Simms, leading scorer, averaged 13.4 points and 6.4 rebounds last season. He earned All-ACC third-team honors and the Skip Prosser Award as the top-scholar in the ACC. Women's Basketball had three Tigers named to All-ACC Academic Team. Delicia Washington earned second-team All-ACC honors and made the WNIT Charlotte All-Regional Team.

Clemson Athletics had many more impressive individual accomplishments in this past year. Valerie Cagle earned ACC Softball Player of the Year and ACC Freshman of the Year in the same season. Clemson Golf's Turk Pettit won the NCAA individual national championship.

RISK ASSESSMENT AND MITIGATION STRATEGIES

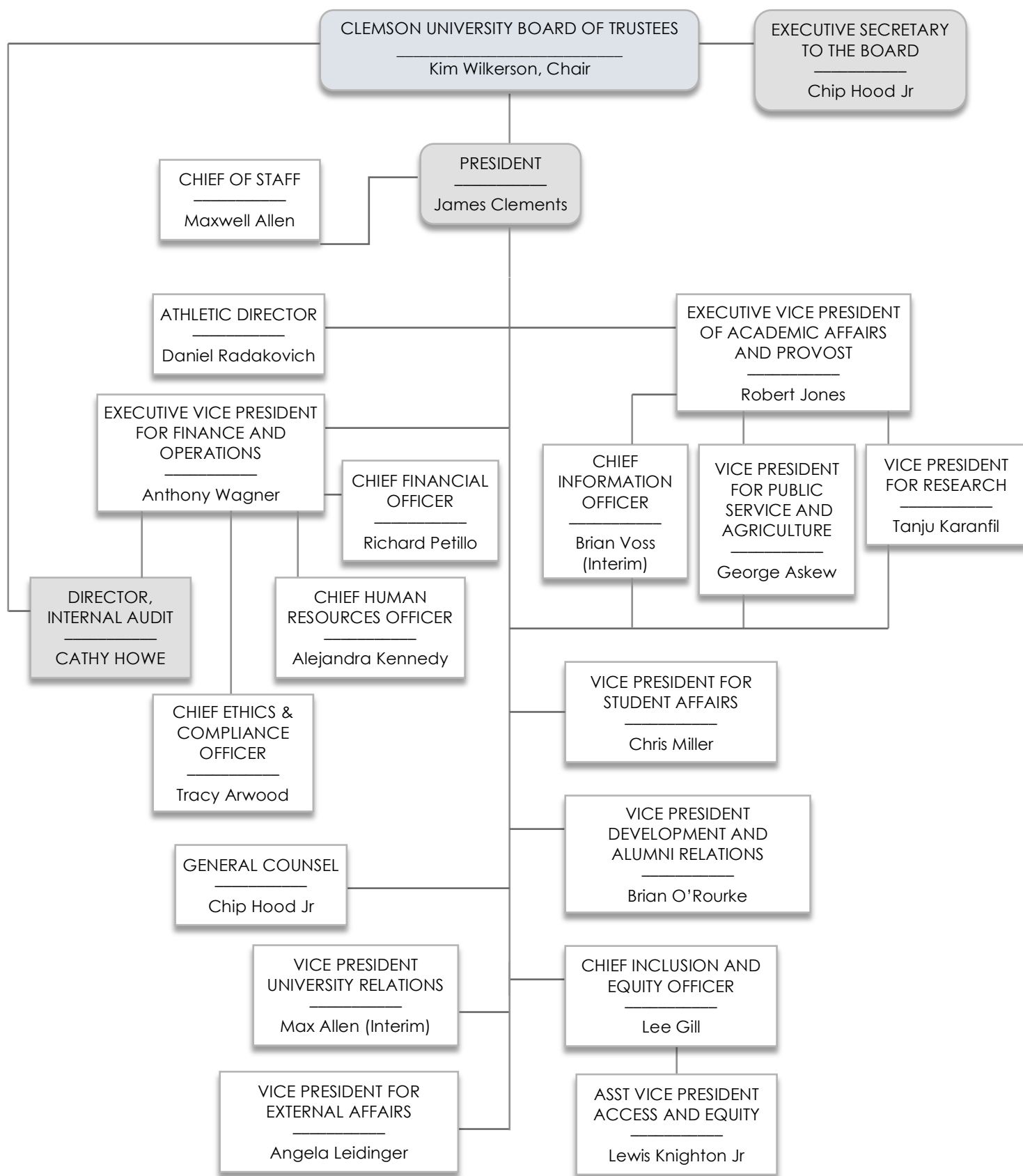
The potential most negative impact on the public as a result of a failure in accomplishing our mission is the risk of socioeconomic retrenchment arising from diminishment of workforce development for key state enterprises; fewer qualified human resources and knowledge discovery that support critical needs such as health and education; impairment of research that is required for thriving advanced manufacturing, health, financial, educational, and agricultural enterprises; reduction in the effectiveness of good government that comes from an educated public; hindrance of efforts to close educational gaps between populations undergoing demographic changes; and erosion of the cultural resources and climate that support South Carolinians' important community, personal, and spiritual relationships.

Clemson works diligently and collaboratively to mitigate such risks. Examples of these efforts include:

- 1) Compliance with the standards of our accrediting body, SACSCOC through excellence in day-to-day business operations
- 2) Collaboration and compliance with professional academic bodies to maintain program-specific accreditation of numerous academic programs at the University.
- 3) Transparent dealings with private-sector credit rating agencies who conduct independent business and financial reviews to reach their independent conclusions regarding our creditworthiness.
- 4) Nurturing authentic relationships with corporations, private foundations, and individuals to understand their needs, establish mutually beneficial programmatic initiatives, and engender private financial support.
- 5) Securing select private-sector services to ensure that we have data resources with which to reach conscious, evidence-based decisions regarding our academic programs, scholarly production, operations, and student welfare.
- 6) A vigorous enterprise risk management and emergency operations framework that provides us with a proactive posture to continue successful operations in the face of sudden or unforeseen events such as COVID19.

Supportive actions by the State that would mitigate the risk of the potential most negative impact would be those that provide flexibility and innovation space to Clemson for the benefit of its students, their families, and South Carolinians. Examples of these might include:

- 1) Eliminating or loosening State-imposed percentage-of-tuition-based caps on institutional scholarship aid—particularly need-based aid.
- 2) Employing a ramped or stepped reduction in student-directed State scholarship aid rather than a sharp cutoff when falling below GPA thresholds, and/or restorative scholarship payments when GPA thresholds are re-attained.
- 3) The University, its students, their families, and the State benefit greatly from direct State appropriations and State scholarship funds provided to students. As Clemson works to help SC prepare to meet future challenges, we do so on a competitive landscape. Inasmuch as our current private endowment is modest compared to many public university competitors, securing State funding per student FTE that is at the median level of our competitive peers is important while we continue our successful work at developing greater and more diverse sources of long-term private support.



Board of Trustees members: Kim Wilkerson (Chair), Ronald (Ronnie) D. Lee (Vice Chair), David E. Dukes, Louis B. Lynn, Patricia (Patti) H. McAbee, John N. (Nicky) McCarter Jr., E. Smyth McKissick III, Robert L. (Bob) Peeler, Cheri M. Phyfer, Mark S. Richardson, William (Bill) C. Smith Jr., Joseph (Joe) D. Swann, David H. Wilkins

FY 2020-2021 Agency Accountability Report FY2021-22 Strategic Plan:														
These responses were submitted for the FY 2020-2021 Accountability Report by the CLEMSON UNIVERSITY														
Goal High-Throughput Production of College Graduates														
Strategy 1.1										Statewide Enterprise Objective				
Enhance Freshman-to-Sophomore Retention										Education, Training, and Human Development				
Measure Number	Description	Base	Target	Actual	Value Type	Desired Outcome	Time Applicable	Calculation Method	Data Source	Data Location	Primary Stakeholder	Stakeholder Need Satisfied	State Funded Program Number Responsible	Notes
1.1.1	U.S. News & World Report Top 10 public university retention rate by 2026	94%	94%		Percent	equal to or greater than	Other	Federal government's National Center for Education Statistics IPEDS system defined methodology. See p. 30 of the IPEDS Keyholder Handbook 2016-2017.	University-level retention data, which comes from our student data warehouse, is updated yearly	University's student data warehouse CHE CHEMIS files University Tableau server Common Data Set report IPEDS report	Students; Families of Students; Agency Employees; Donors; State and Federal Regulators	Direct and indirect benefits to agency clients including cost and time savings to clients and the agency, provisioning product academic programs, and efficient use of budgeted funds.	0200.010100.000	

These responses were submitted for the FY 2020-2021 Accountability Report by the														
CLEMSON UNIVERSITY														
Goal	High-Throughput Production of College Graduates													
Strategy	1.2										Statewide Enterprise Objective			
Enhance Graduation Rate										Education, Training, and Human Development				
Measure Number	Description	Base	Target	Actual	Value Type	Desired Outcome	Time Applicable	Calculation Method	Data Source	Data Location	Primary Stakeholder	Stakeholder Need Satisfied	State Funded Program Number Responsible	Notes
1.2.1	U.S. News & World Report Top 10 public university 6-yr graduation rate by 2026	85%	84%		Percent	equal to or greater than	Other	Federal government's National Center for Education Statistics IPEDS system defined methodology. See p. 34 of the IPEDS Keyholder Handbook 2016-2017.	Graduation data, which comes from our student data warehouse, is updated 3 times per year	University's student data warehouse CHE CHEMIS files University Tableau server Common Data Set report IPEDS report	Students; Families of Students; Agency Employees; Donors; State and Federal Regulators	Direct and indirect benefits to agency clients including cost and time savings to clients and the agency, provisioning product academic programs, and efficient use of budgeted funds.	0200.010100.000	
1.2.2	U.S. News & World Report Top 10 public university 4-yr graduation rate by 2026	65%	63%		Percent	equal to or greater than	Other	Federal government's National Center for Education Statistics IPEDS system defined methodology. See p. 34 of the IPEDS Keyholder Handbook 2016-2017.	Graduation data, which comes from our student data warehouse, is updated 3 times per year	University's student data warehouse CHE CHEMIS files University Tableau server Common Data Set report IPEDS report	Students; Families of Students; Agency Employees; Donors; State and Federal Regulators	Direct and indirect benefits to agency clients including cost and time savings to clients and the agency, provisioning product academic programs, and efficient use of budgeted funds.	0200.010100.000	

These responses were submitted for the FY 2020-2021 Accountability Report by the														
CLEMSON UNIVERSITY														
Goal	High-Throughput Production of College Graduates													
Strategy	1.3										Statewide Enterprise Objective			
Enhanced Production of Post-Baccalaureate Graduates										Education, Training, and Human Development				
Measure Number	Description	Base	Target	Actual	Value Type	Desired Outcome	Time Applicable	Calculation Method	Data Source	Data Location	Primary Stakeholder	Stakeholder Need Satisfied	State Funded Program Number Responsible	Notes
1.3.1	Increase graduating doctoral students by 50% over 2015 levels by 20206	237	302		Count	equal to or greater than	Other	Simple count of doctoral graduates over a full academic year	Graduation data, which comes from our student data warehouse, is updated 3 times per year	University's student data warehouse CHE CHEMIS files University Tableau server IPEDS report	Students; Families of Students; Agency Employees; Donors; International governments providing financial support to their citizens for US graduate education	Direct and indirect benefits to agency clients including cost and time savings to clients and the agency, provisioning product academic programs, and efficient use of budgeted funds.	0200.010100.000	
		</												

[illegible]

These responses were submitted for the FY 2020-2021 Accountability Report by the														
CLEMSON UNIVERSITY														
Goal Execution of Competitive, Externally-Funded Research and Scholarship														
Strategy 2.2										Statewide Enterprise Objective				
Enhanced scholarly productivity										Public Infrastructure and Economic Development				
Measure Number	Description	Base	Target	Actual	Value Type	Desired Outcome	Time Applicable	Calculation Method	Data Source	Data Location	Primary Stakeholder	Stakeholder Need Satisfied	State Funded Program Number Responsible	Notes
2.2.1	Number of journal articles per faculty member increased 50% over 2015 levels by 2026	7.4	8.4		Ratio	equal to or greater than	Calendar Year (January 1 - December 31)	4-year trailing sum of articles authored by Clemson faculty researchers (jointly identified by the University and Academic Analytics™) having Digital Object Identifiers that are scraped by proprietary Academic Analytics™ data capture divided by the count of faculty researchers	Proprietary data from Academic Analytics™ calendar year database, with aggregation with a 1-2 year lag; new data sets released yearly, but updated on a rolling basis	Vendor-provided cloud SaaS	Donors; Prospective students; Other universities seeking collaborators; Agency employees	Direct and indirect benefits to agency clients and the agency itself, including provisioning a program of productive scholarship and efficient use of budgeted funds.	0200.010100.000	
2.2.2	Number of conference proceeding contributions per faculty member increased by 50% over 2015 levels by 2026	1.87	2		Ratio	equal to or greater than	Calendar Year (January 1 - December 31)	4-year trailing sum of articles conference proceeding contributions by Clemson faculty researchers (jointly identified by the University and Academic Analytics™) having Digital Object Identifiers that are scraped by proprietary Academic Analytics™ data capture divided by the count of faculty researchers	Proprietary data from Academic Analytics™ calendar year database, with aggregation with a 1-2 year lag; new data sets released yearly, but updated on a rolling basis	Vendor-provided cloud SaaS	Donors; Prospective students; Other universities seeking collaborators; Agency employees	Direct and indirect benefits to agency clients and the agency itself, including provisioning a program of productive scholarship and efficient use of budgeted funds.	0200.010100.000	
2.2.3	Number of monographs per faculty member increased by 50% over 2015 levels by 2026	0.26	0.43		Ratio	equal to or greater than	Calendar Year (January 1 - December 31)	10-year trailing sum of books authored by Clemson faculty researchers (jointly identified by the University and Academic Analytics™) that are scraped from a variety of sources by proprietary Academic Analytics™ data capture divided by the count of faculty researchers	Proprietary data from Academic Analytics™ calendar year database, with aggregation with a 1-2 year lag; new data sets released yearly, but updated on a rolling basis	Vendor-provided cloud SaaS	Donors; Prospective students; Other universities seeking collaborators; Agency employees	Direct and indirect benefits to agency clients and the agency itself, including provisioning a program of productive scholarship and efficient use of budgeted funds.	0200.010100.000	

[illegible]

FY 2020-2021 Agency Accountability Report FY2021-22 Strategic Plan:														
These responses were submitted for the FY 2020-2021 Accountability Report by the CLEMSON UNIVERSITY														
Goal High-Throughput Production of College Graduates														
Strategy 1.1										Statewide Enterprise Objective				
Enhance Freshman-to-Sophomore Retention										Education, Training, and Human Development				
Measure Number	Description	Base	Target	Actual	Value Type	Desired Outcome	Time Applicable	Calculation Method	Data Source	Data Location	Primary Stakeholder	Stakeholder Need Satisfied	State Funded Program Number Responsible	Notes
1.1.1	U.S. News & World Report Top 10 public university retention rate by 2026	94%	94%		Percent	equal to or greater than	Other	Federal government's National Center for Education Statistics IPEDS system defined methodology. See p. 30 of the IPEDS Keyholder Handbook 2016-2017.	University-level retention data, which comes from our student data warehouse, is updated yearly	University's student data warehouse CHE CHEMIS files University Tableau server Common Data Set report IPEDS report	Students; Families of Students; Agency Employees; Donors; State and Federal Regulators	Direct and indirect benefits to agency clients including cost and time savings to clients and the agency, provisioning product academic programs, and efficient use of budgeted funds.	0200.010100.000	

These responses were submitted for the FY 2020-2021 Accountability Report by the														
CLEMSON UNIVERSITY														
Goal	High-Throughput Production of College Graduates													
Strategy	1.2										Statewide Enterprise Objective			
Enhance Graduation Rate										Education, Training, and Human Development				
Measure Number	Description	Base	Target	Actual	Value Type	Desired Outcome	Time Applicable	Calculation Method	Data Source	Data Location	Primary Stakeholder	Stakeholder Need Satisfied	State Funded Program Number Responsible	Notes
1.2.1	U.S. News & World Report Top 10 public university 6-yr graduation rate by 2026	85%	84%		Percent	equal to or greater than	Other	Federal government's National Center for Education Statistics IPEDS system defined methodology. See p. 34 of the IPEDS Keyholder Handbook 2016-2017.	Graduation data, which comes from our student data warehouse, is updated 3 times per year	University's student data warehouse CHE CHEMIS files University Tableau server Common Data Set report IPEDS report	Students; Families of Students; Agency Employees; Donors; State and Federal Regulators	Direct and indirect benefits to agency clients including cost and time savings to clients and the agency, provisioning product academic programs, and efficient use of budgeted funds.	0200.010100.000	
1.2.2	U.S. News & World Report Top 10 public university 4-yr graduation rate by 2026	65%	63%		Percent	equal to or greater than	Other	Federal government's National Center for Education Statistics IPEDS system defined methodology. See p. 34 of the IPEDS Keyholder Handbook 2016-2017.	Graduation data, which comes from our student data warehouse, is updated 3 times per year	University's student data warehouse CHE CHEMIS files University Tableau server Common Data Set report IPEDS report	Students; Families of Students; Agency Employees; Donors; State and Federal Regulators	Direct and indirect benefits to agency clients including cost and time savings to clients and the agency, provisioning product academic programs, and efficient use of budgeted funds.	0200.010100.000	

These responses were submitted for the FY 2020-2021 Accountability Report by the														
CLEMSON UNIVERSITY														
Goal	High-Throughput Production of College Graduates													
Strategy	1.3										Statewide Enterprise Objective			
Enhanced Production of Post-Baccalaureate Graduates										Education, Training, and Human Development				
Measure Number	Description	Base	Target	Actual	Value Type	Desired Outcome	Time Applicable	Calculation Method	Data Source	Data Location	Primary Stakeholder	Stakeholder Need Satisfied	State Funded Program Number Responsible	Notes
1.3.1	Increase graduating doctoral students by 50% over 2015 levels by 20206	237	302		Count	equal to or greater than	Other	Simple count of doctoral graduates over a full academic year	Graduation data, which comes from our student data warehouse, is updated 3 times per year	University's student data warehouse CHE CHEMIS files University Tableau server IPEDS report	Students; Families of Students; Agency Employees; Donors; International governments providing financial support to their citizens for US graduate education	Direct and indirect benefits to agency clients including cost and time savings to clients and the agency, provisioning product academic programs, and efficient use of budgeted funds.	0200.010100.000	

[illegible]

These responses were submitted for the FY 2020-2021 Accountability Report by the														
CLEMSON UNIVERSITY														
Goal Execution of Competitive, Externally-Funded Research and Scholarship														
Strategy 2.2										Statewide Enterprise Objective				
Enhanced scholarly productivity										Public Infrastructure and Economic Development				
Measure Number	Description	Base	Target	Actual	Value Type	Desired Outcome	Time Applicable	Calculation Method	Data Source	Data Location	Primary Stakeholder	Stakeholder Need Satisfied	State Funded Program Number Responsible	Notes
2.2.1	Number of journal articles per faculty member increased 50% over 2015 levels by 2026	7.4	8.4		Ratio	equal to or greater than	Calendar Year (January 1 - December 31)	4-year trailing sum of articles authored by Clemson faculty researchers (jointly identified by the University and Academic Analytics™) having Digital Object Identifiers that are scraped by proprietary Academic Analytics™ data capture divided by the count of faculty researchers	Proprietary data from Academic Analytics™ calendar year database, with aggregation with a 1-2 year lag; new data sets released yearly, but updated on a rolling basis	Vendor-provided cloud SaaS	Donors; Prospective students; Other universities seeking collaborators; Agency employees	Direct and indirect benefits to agency clients and the agency itself, including provisioning a program of productive scholarship and efficient use of budgeted funds.	0200.010100.000	
2.2.2	Number of conference proceeding contributions per faculty member increased by 50% over 2015 levels by 2026	1.87	2		Ratio	equal to or greater than	Calendar Year (January 1 - December 31)	4-year trailing sum of articles conference proceeding contributions by Clemson faculty researchers (jointly identified by the University and Academic Analytics™) having Digital Object Identifiers that are scraped by proprietary Academic Analytics™ data capture divided by the count of faculty researchers	Proprietary data from Academic Analytics™ calendar year database, with aggregation with a 1-2 year lag; new data sets released yearly, but updated on a rolling basis	Vendor-provided cloud SaaS	Donors; Prospective students; Other universities seeking collaborators; Agency employees	Direct and indirect benefits to agency clients and the agency itself, including provisioning a program of productive scholarship and efficient use of budgeted funds.	0200.010100.000	
2.2.3	Number of monographs per faculty member increased by 50% over 2015 levels by 2026	0.26	0.43		Ratio	equal to or greater than	Calendar Year (January 1 - December 31)	10-year trailing sum of books authored by Clemson faculty researchers (jointly identified by the University and Academic Analytics™) that are scraped from a variety of sources by proprietary Academic Analytics™ data capture divided by the count of faculty researchers	Proprietary data from Academic Analytics™ calendar year database, with aggregation with a 1-2 year lag; new data sets released yearly, but updated on a rolling basis	Vendor-provided cloud SaaS	Donors; Prospective students; Other universities seeking collaborators; Agency employees	Direct and indirect benefits to agency clients and the agency itself, including provisioning a program of productive scholarship and efficient use of budgeted funds.	0200.010100.000	

[illegible]

FY 2020-2021 Agency Accountability Report Budget Responses:										
These responses were submitted for the FY 2020-2021 Accountability Report by the										
CLEMSON UNIVERSITY										
			FY 2020-21 Expenditures (Actual)				FY 2021-22 Expenditures (Projected)			
State Funded Program Number	State Funded Program Title	Description of State Funded Program	General	Other	Federal	TOTAL	General	Other	Federal	TOTAL
0200.010100.000	E&G-Unrestricted	The Instruction activity at the University prepares both undergraduate and graduate students with the knowledge and skills that they need to complete their degrees and be prepared for life long learning. Clemson established under 59-119-10 et.seq of S.C. Code of Laws. The Research activity of the University provides opportunity for the faculty and students to maintain and enhance their scholarship, to advance new knowledge and to create economic development. Public Service is a component of faculty activities and includes lectures, concerts, conferences, special programming and other activities in which the student, faculty and staff are available to the citizens of the state. The University is committed to sharing new knowledge to the citizens of South Carolina. The faculty, staff, and students engage in community service and service learning activities.	\$68,264,230.00	\$297,018,206.00	\$147,777.00	\$365,430,213.00	\$78,370,740.00	\$442,046,137.00	\$18,083,110.00	\$538,499,987.00
0200.050100.000	E&G-Restricted	Sponsored Research refers to public and private funding support of faculty research. These activities are an essential component of a research university and provide a foundation for economic development, creation of new knowledge and application of research findings. Graduate student support is an essential component of sponsored research.		\$221,448,955.00	\$113,684,445.00	\$335,133,400.00		\$149,137,026.00	\$116,777,189.00	\$265,914,215.00
0304.000000.000	Auxiliary Enterprises	Housing operations provides for the on-campus living environments for students. Other auxiliaries include bookstore, food services, intercollegiate athletics, telecommunications, contract computing services, student health center, parking services, and other activities.		\$144,986,658.00		\$144,986,658.00		\$254,466,103.00		\$254,466,103.00
9500.050000.000	State Employer Contributions	Contributions required by the State to provide employee benefits.	\$24,714,653.00	\$216,653,469.00	\$8,781,075.00	\$250,149,197.00	\$23,405,353.00	\$174,709,977.00	\$7,103,953.00	\$205,219,283.00

FY 2020-2021 Agency Accountability Report

Legal Responses:

These responses were submitted for the FY 2020-2021 Accountability Report by the
CLEMSON UNIVERSITY

Description	Purpose	Law Number	Jurisdiction	Type	Notes
DHHS Rural Health Initiative regarding provisioning primary care access in rural and underserved areas	Funding agency deliverable(s)	33.22	State	FY 2019-20 Proviso	
Requires the State Auditor to identify certain long-term obligations by state IHLs and report findings to the General Assembly, and requires state IHLs to respond to formal requests for information from the State Auditor	Requires a service	105.5	State	FY 2019-20 Proviso	
For FY21-22, certain earnings limitations do not apply to retired members of SCRS	Not related to agency deliverable	108.12	State	FY 2019-20 Proviso	
IHLs shall utilize a portion of appropriated/authorized funds to develop enrollment and retention plans promoting diversity in their student body	Requires a service	117.142	State	FY 2019-20 Proviso	
Authorization for Expenditure of COVID-19 Federal Funds through the CARES Act and other sources of federal COVID-19 relief funds	Distribute funding to another entity	117.148	State	FY 2019-20 Proviso	
Permanent improvement projects between \$1M and \$5M for public research universities are exempt from certain requirements	Not related to agency deliverable	117.153	State	FY 2019-20 Proviso	
Restricts IHLs from requiring proof of COVID-19 vaccination as a condition of enrollment, attendance, or residence on campus	Requires a manner of delivery	117.163	State	FY 2019-20 Proviso	
For FY21-22, SC National Guard members may qualify for college assistance program grants for more than 130 credit hours	Requires a manner of delivery	117.167	State	FY 2019-20 Proviso	
IHLs may not use appropriated/authorized funds to require students having received the COVID-19 vaccination to be required to wear a facemask		117.19	State	FY 2019-20 Proviso	
State IHLs not required to submit certain printed reports during the FY	Not related to agency deliverable	117.69	State	FY 2019-20 Proviso	
Each state agency must provide and release to the public a report of all aggregate amounts of fines or fees in the prior FY.	Report our agency must/may provide	117.71	State	FY 2019-20 Proviso	
Asian Longhorned Beetle Quarantine regulation defining a quarantine area as part of eradication efforts of this invasive insect	Not related to agency deliverable	5015	State	Regulation	
Provides that Clemson University is a public institution of higher education in South Carolina, formed to establish and maintain an agricultural and mechanical college in accordance with the terms of Thomas G. Clemson's last will and testament. This includes the management of land resources and related properties.	Requires a service	59-119-10 et seq	State	Statute	The University is implicitly expected to offer academic and administrative services in supporting coherent programs of study that lead to students being able to pursue and be awarded academic awards (degrees or certificates). The University manages land resources and related properties associated with the University.
The State Treasurer shall securely invest and reinvest the funds in his hands derived from the Clemson bequest in such manner as shall be directed by the Governor, the Comptroller General and the State Treasurer or any two of them.	Funding agency deliverable(s)	59-119-100	State	Statute	

These responses were submitted for the FY 2020-2021 Accountability Report by the
CLEMSON UNIVERSITY

Description	Purpose	Law Number	Jurisdiction	Type	Notes
One half of the land scrip fund once vested in the board of trustees of the University of South Carolina having by due authority of law been vested in the six members of the board of trustees of Clemson University elected by the General Assembly and the State Treasurer having issued a certificate of State stock in the sum of ninety-five thousand nine hundred dollars, bearing interest at the rate of six per cent per annum, payable semiannually, to such six members of such board of trustees, to be held as a perpetual fund, the capital of which shall forever remain undiminished, the income of such fund shall be used by the board of trustees for the building and maintenance of Clemson University, in accordance with the purposes for which such land scrip was donated by the act of Congress in relation thereto	Funding agency deliverable(s)	59-119-110	State	Statute	
All sums which shall be received by the State from the United States Government under the provisions of the act of Congress, approved August 30, 1890 entitled "An Act to Apply a Portion of the Public Lands to the more Complete Endowment and Support of Colleges for the Benefit of Agriculture and Mechanical Arts Established under the Provisions of an Act of Congress approved July second, eighteen hundred and sixty-two," shall be equally divided between South Carolina State College and Clemson University to be applied to the purposes specified in such act.	Funding agency deliverable(s)	59-119-120	State	Statute	
The board of trustees shall make to the General Assembly an annual report of the university, of all farming operations and tests and experiments and of all receipts and expenditures, with a statement of the condition of the property and funds of such university and of all receipts and expenditures of money appropriated thereto by the State.	Report our agency must/may provide	59-119-140	State	Statute	
Establishes a South Carolina Anergy Research and Development Center located at or in conjunction with the University. Requires Clemson to establish an advisory board for the center with general membership prescriptions.	Requires a service	59-119-160	State	Statute	

These responses were submitted for the FY 2020-2021 Accountability Report by the
CLEMSON UNIVERSITY

Description	Purpose	Law Number	Jurisdiction	Type	Notes
The State Fiscal Accountability Authority, in conjunction with the Department of Education, shall transfer all federal funds associated with Agricultural Education at the Department of Education to Clemson-PSA (Public Service Activities) no later than July fifteenth of each fiscal year. Notwithstanding any other provisions of law, funds and positions transferred to Clemson-PSA from the Department of Education for Agricultural Education shall be used for personnel positions and related office and travel expenses to provide overall leadership, coordination, and structure for agricultural education programs, and South Carolina Association of Young Farmers activities in the public schools of this State. Clemson-PSA shall provide a report to the Department of Education on the use and expenditure of the federal funds transferred by the Department of Education to Clemson-PSA no later than December first of each fiscal year.	Requires a service	59-119-165	State	Statute	Also Funding Agency deliverables and Report the agency must/may provide
The deed and transfer of such property to the State having been duly executed and made by the executor, in accordance with the provisions of the will, an agricultural and mechanical college has been established in connection with the aforesaid devise and bequest, styled The Clemson Agricultural College of South Carolina and situated at Fort Hill, in Oconee County, on the plantation so devised. In the college shall be taught all branches of study pertaining to practical and scientific agricultural and other industries connected therewith and such other studies as are not inconsistent with the terms of such will.	Requires a service	59-119-20	State	Statute	
Changed the institution name from The Clemson Agricultural College of South Carolina to Clemson University.	Not related to agency deliverable	59-119-30	State	Statute	
Requires the university to be under the managerial control of a board of thirteen trustees, and specifies the number, structure, and terms of those trustees.	Board, commission, or committee on which someone from our agency must/may serve	59-119-40	State	Statute	
Clemson University Board of Trustees shall elect a president of the university, as well as declaring professorship, setting forth professors' duties and salaries. Furthermore, it shall employ such staff persons to carry out the functions of the University, its farms, grounds, shops, etc., and fix their compensation and salaries as well.	Requires a service	59-119-50	State	Statute	The Board of Trustees is expected to employ faculty and staff necessary to execute the functions of the University, and establish personnel salaries and compensation. The Board is also expected to select a President of the University.

These responses were submitted for the FY 2020-2021 Accountability Report by the
CLEMSON UNIVERSITY

Description	Purpose	Law Number	Jurisdiction	Type	Notes
The University's Board of Trustees is a body politic and corporate, under the name and style of Clemson University. It shall have a corporate seal, which it may change at its discretion, and in its corporate name it may contract for, purchase and hold property. It may sue and be sued and plead and be impleaded in its corporate name and may do all things necessary to carry out the provisions of Sections 59-119-10 to 59-119-70 and may make bylaws for this purpose if it deems it necessary.	Not related to agency deliverable	59-119-60	State	Statute	
The University's Board of Trustees may sell and make title to, upon such terms and conditions as it deems advisable, any real estate held by it.	Not related to agency deliverable	59-119-70	State	Statute	
Provides that Clemson University shall have the authority to incur debt, acquire, construct, renovate and equip auxiliary facilities in support of the educational enviroment at Clemson and to support and benefit the present and potential students at Clemson University.	Not related to agency deliverable	59-119-710	State	Statute	
Deines "bonds", "Clemson", "Facilities", "Revenues", "Authority", and "Trustees"	Not related to agency deliverable	59-119-720	State	Statute	
The trustees are authorized to acquire additional facilities and to improve and renovate existing facilities to the extent they determine to be necessary; and the proceeds of bonds authorized by this article are made available for that purpose. The trustees also are authorized to refund bonds that may from time to time be outstanding pursuant to this article by exchange or otherwise.	Not related to agency deliverable	59-119-730	State	Statute	
Upon receiving the approval of the State Fiscal Accountability Authority or the Department of Administration, as appropriate, and upon review by the Joint Bond Review Committee, the trustees may from time to time borrow such sums as may be necessary to accomplish the purpose of this article and to evidence these borrowings by bonds issued pursuant to this article	Not related to agency deliverable	59-119-740	State	Statute	

These responses were submitted for the FY 2020-2021 Accountability Report by the
CLEMSON UNIVERSITY

Description	Purpose	Law Number	Jurisdiction	Type	Notes
Bonds issued pursuant to this article must be payable from the revenues or the net revenues derived by Clemson from these facilities as designated by the trustees with respect to the bonds. The trustees may abandon the use of any portion of the facilities or sell or dispose of any portion of the facilities upon receipt of a written recommendation by the chief financial officer of Clemson to the effect that the action will not adversely affect the ability of Clemson to discharge its obligations to the holders of bonds issued pursuant to this article and upon the further conditions as prescribed in the resolution of the trustees providing for the issuance of bonds. The bonds issued pursuant to this article may be further secured by the additional pledges of other revenues or fees of Clemson as it may be authorized to grant pursuant to other laws of this State.	Not related to agency deliverable	59-119-750	State	Statute	
Specifies that bonds are not guaranteed by the State, and that trustees are not personally liable	Not related to agency deliverable	59-119-760	State	Statute	
Sets forth that trustees shall adopt resolutions providing for the issuance of bonds of Clemson, within the limitations mentioned in this article which must prescribe the tenor, terms, and conditions of the bonds. The bonds must be issued as serial or term bonds, maturing in equal or unequal amounts, at such times and on such occasions as the trustees determine. The last maturing bonds of any issue must be expressed to mature not later than fifty years from their date, and the first maturing bonds of any issue, issued pursuant to this article, falls due within five years from their date. They must bear such rates of interest, payable on such occasion, as the trustees prescribe, and the bonds must be in such denominations, payable in such medium of payment, and at such place as such resolutions prescribe. All bonds may be issued with a provision permitting their redemption on any interest payment date before their respective maturities. Bonds made subject to redemption before their stated maturities may contain a provision requiring the payment of a premium for the privilege of exercising the right of redemption, in such amount or amounts as the trustees prescribe in the resolutions authorizing their issuance. All bonds that are subject to redemption must contain a statement to that effect on the face of each bond. The resolutions authorizing their issuance must contain provisions specifying the manner of call and the notice of call that must be given.	Not related to agency deliverable	59-119-770	State	Statute	

These responses were submitted for the FY 2020-2021 Accountability Report by the
CLEMSON UNIVERSITY

Description	Purpose	Law Number	Jurisdiction	Type	Notes
Specifies that the bonds authorized by this article and all interest to become due on them have the (State) tax exempt status	Not related to agency deliverable	59-119-780	State	Statute	
Specifies that it is lawful for all executors, administrators, guardians, and fiduciaries, all sinking fund commissions, the Public Employee Benefit Authority and the State Fiscal Accountability Authority, as cotrustees of the South Carolina Retirement System, and all other governmental entities within this State to invest any monies in their hands in the bonds.	Not related to agency deliverable	59-119-790	State	Statute	
Requires a two-thirds vote of the board of trustees to authorize the expenditure of any monies appropriated to the university by the State or to authorize the sale, transfer or reinvestment of any property or monies arising from the sale of any property under the provisions of this chapter.	Not related to agency deliverable	59-119-80	State	Statute	
The bonds and coupons, if any, attached to the bonds, are executed manually or by facsimile in the name of Clemson in the manner and by persons as the trustees from time to time determine, and the seal of Clemson must be affixed to or impressed or reproduced on each bond. Any coupons attached to the bonds must be authenticated by the facsimile signature of one or more of the persons signing the bonds. The bonds, in the discretion of the trustees, may be registerable as to principal and interest on books kept for them by or on behalf of Clemson, including by a corporate registrar. The delivery of the executed bonds is valid notwithstanding changes in officers or in the seal occurring after the execution. Notwithstanding the foregoing, the bonds, in the discretion of the trustees, may be issued as fully registered noncertificated book-entry securities.	Not related to agency deliverable	59-119-800	State	Statute	
Requires that bonds must be disposed of in such manner as the trustees determine, except that no sale, privately negotiated without public advertisement, may be made unless the approval of the State Fiscal Accountability Authority is obtained. If the trustees elect to sell the bonds at public sale, at least one advertisement of them must appear in some newspaper of general circulation in this State not less than seven days before the date fixed for the opening of bids. The bonds may be sold at such discount or for such premium as may be determined by the trustees or their designee as being in the best interest of Clemson.	Not related to agency deliverable	59-119-810	State	Statute	
Describes the Trustees' powers or purposes of securing principal and interest of bonds	Not related to agency deliverable	59-119-820	State	Statute	
Specifies no time limit is set for the issuance of bonds pursuant to this article.	Not related to agency deliverable	59-119-830	State	Statute	

These responses were submitted for the FY 2020-2021 Accountability Report by the					
CLEMSON UNIVERSITY					
Description	Purpose	Law Number	Jurisdiction	Type	Notes
The State Treasurer having by due authority of law invested certain funds which were turned over to him as a part of the Clemson bequest in Brown consols of this State and having been issued a certificate of State stock in a sum equal to the value of such Brown consols, bearing interest at the rate of six per cent per annum, payable semiannually, to the board of trustees of Clemson University, the same shall be held as a perpetual fund, the capital of which shall forever remain undiminished and the interest on which shall be used by such board of trustees for the uses of the university.	Not related to agency deliverable	59-119-90	State	Statute	
REACH Act, requiring credits and pedagogical materials as a requirement for receiving a baccalaureate degree	Requires a manner of delivery	S.38	State	Statute	

FY 2020-2021 Agency Accountability Report
Services Responses:

These responses were submitted for the FY 2020-2021 Accountability Report by the

CLEMSON UNIVERSITY

Description of Service	Description of Direct Customer	Customer Name	Others Impacted By the Service	Agency unit providing the service	Description of agency unit	Primary negative impact if service not provided
Services include application development and maintenance, quality assurance, project management, and business application support functions.	State agency	MEDS and MMIS in SC DHHS	SC citizens and residents	Clemson Computing and Information Technology	Medicaid IT Services in CCIT provides operational support for the Medicaid Eligibility Determination System (MEDS) and the Medicaid Management Information System (MMIS) with the Department of Health and Human Services (DHHS) in South Carolina.	Declines in personal and public health; financial strain on medical institutions and practices.
Services include research and other contracted provisions in response to agency or department need.	Various federal agencies		SC citizens and residents	Office of Sponsored Programs, Academic Colleges, Centers & Institutes, Individual Faculty Members	Clemson University receives pass-through funding via grants and contracts with numerous federal departments and agencies including USDA, the Department of Commerce, DoD, the Department of the Interior, the Department of Justice, the Department of Labor, the Department of State, the Department of Transportation, the Appalachian Regional Commission, NASA, the Institute of Museum & Library Services, NSF, VA, EPA, NRC, the Department of Energy, the Department of Education, the Vietnam Education Foundation, HHS, Homeland Security, USAID, and the CIA.	Decrease in innovative discoveries and translational research with concomitant effects on a knowledge-based economy
Development of military leadership personnel to fulfill officer positions in the U.S. Armed Forces.	U.S. Armed Forces	United States Army and United States Air Force	US citizens and residents	ROTC Programs	Clemson University's Army and Air Force ROTC programs	Decrease in supply of leadership in US Armed Forces
Services include career services and professional development, disability services, GreenZone Training, veteran orientation, health services, a veteran-dedicated newsletter, tutoring, and a veterans writing group.	Students that are veterans	myriad various	U.S. Armed Forces	Student Veteran Resource Center, Student Affairs, Redfern Health Center	Clemson University and its Student Veteran Resource Center provides an accessible and convenient space for veterans to access resources and interact with fellow veterans	Declines in productive reassimilation of veterans into civilian society and workforce roles

These responses were submitted for the FY 2020-2021 Accountability Report by the

CLEMSON UNIVERSITY

Description of Service	Description of Direct Customer	Customer Name	Others Impacted By the Service	Agency unit providing the service	Description of agency unit	Primary negative impact if service not provided
Our academic programs lead to teaching licensure in early childhood, elementary, special, and agricultural education, and secondary English, mathematics, science and social studies. Our Master's and specialist degrees produce human resources for schools in the areas of clinical mental health, school counseling, and administration/supervision that lead to licensure. Other Master's degrees fulfill workforce needs in athletic leadership, student affairs, and human resource development. Additional coursework counts toward state granted add-on licensure for teachers in areas such as ESOL and early childhood, as well as in-service teacher coursework and professional development through programs such as Reading Recovery.	State agency	SC Dept of Education	PK12 schools	College of Education	Clemson University College of Education's numerous academic programs (undergraduate and graduate) and additional add-on licensure and in-service coursework	Further exacerbation of teacher shortage in SC with concomitant impact on PK12 education o SC children
Our academic nursing programs prepare nurses for professional practice, leadership in health care, and advancing nursing knowledge. These programs and our graduates optimize the health and quality of life for the people of South Carolina, the nation, and the global community.	Medical/Patient Care	myriad various	US and SC citizens and residents	School of Nursing	Clemson University School of Nursing's numerous baccalaureate, master's, doctoral, and certificate programs educate health care professionals who advance scientific knowledge and evidence-based practice through research and outreach.	Further strain on tight qualified nursing labor pool, with concomitant impact on public health and medical care.
Educational opportunities, degrees, certifications, workforce development, cultural offerings, basic and applied research and derivative products/services	Enrolled students and auditing students, and their parents and families--these encompass all demographic groups and their associated full ranges.	myriad various	Employers; post-baccalaureate institutions; US citizens and residents	Academic Affairs	Our academic colleges and their associated academic programs, faculty, and staff provide education, degrees, certifications, and other products and services for the benefit of our students and their parents/families.	Declines in supply of educated workforce, qualified post-baccalaureate enrollees, and an educated citizenry
Educational programs, degrees, certifications, workforce and professional development, basic and applied research and derivative products/services.	Myriad diverse industries	myriad various	US citizens and residents	Academic Affairs	Our academic colleges and their associated academic programs, faculty, and staff provide education, degrees, certifications, and other products and services for the benefit of national and state industries.	Declines in qualified labor pool for knowledge- and information-based industries
Competitive collegiate athletic programs devoted to quality, compliance, integrity, representing the citizens of SC, and the personal and educational development of student-athletes.	Enrolled students and auditing students, and their parents and families--these encompass all demographic groups and their associated full ranges.	myriad various	US citizens and residents	Athletics	Our athletic programs enrich the educational experience of our student body, and create important ties with South Carolinians	Declines in leisure activity opportunities for US residents, and declines in meaningful personal/professional development opportunities that college athletics provides student athletes.

These responses were submitted for the FY 2020-2021 Accountability Report by the

CLEMSON UNIVERSITY

Description of Service	Description of Direct Customer	Customer Name	Others Impacted By the Service	Agency unit providing the service	Description of agency unit	Primary negative impact if service not provided
Educated, engaged, enthusiastic students in the role of temporary workers. Opportunity for customer entities to market, evaluated, and recruit long-term workforce.	Various public and private industries/organization, both profit and non-profit	myriad various	US citizens and residents	Cooperative Education Program	Clemson's Cooperative Education Program partners with various entities of various natures to provide our undergraduate students with mentored work experience in their chosen field while benefiting the organizations where they work.	Declines in available pool of qualified workers in niche labor market positions; stunted professional development of young workers with implications for long-term career progression and long-term talent pools

Agency Partnerships Responses:

These responses were submitted for the FY 2020-2021 Accountability Report by the

CLEMSON UNIVERSITY

Name of Partner Entity	Type of Partner Entity	Description of Partnership
Clemson University Foundation	Non-Governmental Organization	The Clemson University Foundation is an independent not-for-profit 501(c)(3) organization that promotes the welfare and future development of Clemson University
Clemson University Research Foundation	Non-Governmental Organization	The Clemson University Research Foundation is a 501(c)(3) corporation founded exclusively for charitable, education, and scientific purposes that manages the process of moving Clemson University's innovative technologies from the laboratory into commercial markets via patent protection, marketing, education, material transfer, license negotiation, and providing support for Clemson University inventors and entrepreneurs.
Clemson University Real Estate Foundation	Non-Governmental Organization	The Clemson University Real Estate Foundation, Inc., is an independent, non-profit, tax-exempt public charity incorporated under Section 501(c)(3) of the Internal Revenue Code. The foundation advances Clemson University through gifts of real estate and property, provides stewardship of real estate in support of the University, and assists/advises any college or department that includes a concentration in real estate as part of its academic offerings.
The Clemson University Land Stewardship Foundation	Non-Governmental Organization	The Clemson University Land Stewardship Foundation, Inc., is an independent, non-profit, tax-exempt public charity incorporated under Section 501(c)(3) of the Internal Revenue Code. The foundation seeks to support Clemson through the development and related activities associated with real property, and to support Clemson University's economic development activities in communities throughout the state.
IPTAY	Non-Governmental Organization	IPTAY is a nonprofit public benefit corporation that provides scholarships for Clemson University student-athletes and non-athletes, helps Clemson University student-athletes be top competitors on the field and in the classroom, funds Tiger Band member uniforms and all travel expenses, and provides support for programs and facilities that maintain Clemson University's competitiveness in collegiate sports.
Clemson Alumni Association	Non-Governmental Organization	The Clemson Alumni Association is a non-profit organization that builds connections between Clemson University alumni and with the University to extend the Clemson Experience beyond graduation.
South Carolina Commission on Higher Education	State Government	Clemson University works with the CHE via the latter's planning and approval authority to ensure institutional goals, student needs, and taxpayer interests are aligned as we deliver efficient, quality education. The partnership also ensures transparency of operations, coordination of information for the benefit of South Carolinians. Additionally, Clemson and CHE work cooperatively to facilitate the critical investments in research and economic development that benefit all South Carolinians.
Southern Association of Colleges and Schools Commission on Colleges	Professional Association	Clemson's partnership with our regional higher education institutional accrediting body helps ensure our institutional effectiveness, quality of education, and eligibility for federal financial aid funds.
Tri-County Technical College	Higher Education Institute	The Clemson-TCTC partnership is the foundation of our Clemson Bridge program. This program allows certain students not directly admitted to Clemson to enroll at TCTC for their freshman year, and (subject to satisfying certain academic requirements) subsequently enroll at Clemson the following fall semester without being required to resubmit a Clemson admissions application.
U.S. Department of Education/National Center for Education Statistics	Federal Government	Clemson University's work with NCES staff and reporting systems ensures that we collect, synthesize, analyze and interpret data that provides critical insight on the effectiveness and quality of our programs and the University as a whole.
Association to Advance Collegiate Schools of Business - International	Professional Association	Clemson's partnership with the AACSB accrediting body ensures standards-based evidence-backed quality in our academic degree programs in business administration, management, and accounting.
Accrediting Board for Engineering and Technology, Inc.	Non-Governmental Organization	Clemson's partnership with the ABET accrediting body ensures standards-based evidenced-backed quality in our academic degree programs in Computer Science and the Engineering disciplines.
American Camp Association	Professional Association	Clemson's partnership with the ACA accreditation process ensures standards-based evidence-backed quality in our Parks, Recreation, and Tourism Management BS degree program.
American Chemical Society	Professional Association	Clemson's partnership with the ACS certification process ensures standards-based evidence-backed quality in our Chemistry BS degree program.
American Society of Biochemistry and Molecular Biology	Professional Association	Clemson's partnership with the ASBMB accreditation process ensures standards-based evidence-backed quality in our Biochemistry BS degree program.
American Council for Construction Education	Professional Association	Clemson's partnership with the ACCE accrediting body ensures standards-based evidence-backed quality in our academic degree programs in Construction Science Management.
American Society of Landscape Architects	Professional Association	Clemson's partnership with the ASLA accrediting body ensures standards-based evidence-backed quality in our academic degree programs in Landscape Architecture.
Association for Childhood Education International	Professional Association	Clemson's partnership with the ACEI certification process ensures standards-based evidence-backed quality in our Elementary Education BA degree program.
International Literacy Association (ILA)	Professional Association	Clemson's partnership with the ILA certification process ensures standards-based evidence-backed quality in our MEd Literacy degree program.
Council of Education for Public Health	Professional Association	Clemson's partnership with the CEPH accreditation process ensures standards-based evidence-backed quality in our Health Science BS degree program.
Association for Middle Level Education	Professional Association	Clemson's partnership with the AMLE certification process ensures standards-based evidence-backed quality in our Middle Level Education MAT degree program.
Council for Exceptional Children	Professional Association	Clemson's partnership with the CEC certification process ensures standards-based evidence-backed quality in our Special Education MAT and BA degree programs.
Educational Leadership Constituent Council (ELCC)	Professional Association	Clemson's partnership with the ELCC certification process ensures standards-based evidence-backed quality in our Administration & Supervision MEd and EdS Special Education MAT and BA degree programs.
National Association for the Education of Young Children (NAEYC)	Professional Association	Clemson's partnership with the NAEYC certification process ensures standards-based evidence-backed quality in our Early Childhood Education BA degree program.
National Council for the Social Studies (NCSS)	Professional Association	Clemson's partnership with the NCSS certification process ensures standards-based evidence-backed quality in our Secondary Education: Social Studies BA degree program.
National Council of Teachers of English (NCTE)	Professional Association	Clemson's partnership with the NCSS certification process ensures standards-based evidence-backed quality in our Secondary Education: English BA degree program.

These responses were submitted for the FY 2020-2021 Accountability Report by the

CLEMSON UNIVERSITY

Name of Partner Entity	Type of Partner Entity	Description of Partnership
National Council of Teachers of Mathematics (NCTM)	Professional Association	Clemson's partnership with the NCSS certification process ensures standards-based evidence-backed quality in our Secondary Education: Mathematics BA, Secondary Education MAT, and Mathematics Teaching BS degree programs.
National Science Teachers Association (NSTA)	Professional Association	Clemson's partnership with the NSTA certification process ensures standards-based evidence-backed quality in our Secondary Education MAT, Science Teaching BS, and Science Teaching BA degree programs.
Commission on Accreditation of Allied Health Education Programs	Professional Association	Clemson's partnership with the CAAHEP accreditation process ensures standards-based evidence-backed quality in our Health Science BS degree program.
Accreditation Council for Education in Nutrition and Dietetics	Professional Association	Clemson's partnership with the ACEND accrediting body ensures standards-based evidence-backed quality in our academic degree programs in Nutrition and Dietetics.
Committee for Recreational Therapy Education	Professional Association	Clemson's partnership with the CARTE accreditation process ensures standards-based evidence-backed quality in the Recreational Therapy options of our BS Parks, Recreation & Tourism Management degree program.
Commission on Collegiate Nursing Education	Professional Association	Clemson's partnership with the CCNE accrediting body ensures standards-based evidence-backed quality in our academic degree programs in Nursing.
Council for Accreditation of Counseling and Related Education Programs	Professional Association	Clemson's partnership with the CACREP accrediting body ensures standards-based evidence-backed quality in our academic graduate degree programs in counseling and student affairs practice.
Human Factors and Ergonomics Society	Professional Association	Clemson's partnership with the HFES accreditation process ensures standards-based evidence-backed quality in the Human Factors track of our PhD Psychology degree program.
National Architectural Accrediting Board, Inc.	Non-Governmental Organization	Clemson's partnership with the NAAB accrediting body ensures standards-based evidence-backed quality in our academic professional degree programs in Architecture.
National Association of Schools of Arts and Design	Professional Association	Clemson's partnership with the NASAD accrediting body ensures standards-based evidence-backed quality in our academic degree programs in Art & Design.
National Council for Accreditation of Teacher Education	Professional Association	Clemson's partnership with the NCATE (now CAEP) accrediting body ensures standards-based evidence-backed quality in our academic degree programs in elementary and secondary education that prepare teachers and other school professional personnel
National Recreation and Parks Association	Professional Association	Clemson's partnership with the COAPRT accrediting body ensures standards-based evidence-backed quality in our academic degree programs in Parks, Recreation, and Tourism Management.
Planning Accreditation Board	Professional Association	Clemson's partnership with the PAB accrediting body ensures standards-based evidence-backed quality in our academic graduate degree program in City and Regional Planning.
Society of American Foresters	Professional Association	Clemson's partnership with the SAF accrediting body ensures standards-based evidence-backed quality in our academic degree programs in Forestry.
Prisma Health	Non-Governmental Organization	Clemson University's School of Health Research (CUSHR) has developed strategic partnerships with health care systems that give our faculty and students opportunities to engage in applied research, professional learning, and immersion experiences. One of CUSHR's important strategic partners is Prisma Health, which named Clemson its primary health care research partner in 2013. Prisma and other partners are key to CUSHR's efforts to affect positive change in health care, understanding that our efforts are better together.
Medical Univeristy of South Carolina	Higher Education Institute	The Clemson-MUSC Bioengineering Program is the manifestation of a rapidly growing educational and research partnership between Clemson University and the Medical University of South Carolina. The partnership's mission is to bridge engineering and physical sciences with the life sciences disciplines to better understand fundamental biological and disease processes.
EAB	Private Business Organization	Clemson's partnership with EAB's Student Success Collaborative facilitates the use of big data and analytical tools to increase student success, retention, and graduation rates.
PGA of America	Professional Association	Clemson's partnership with the PGA of American ensures practical- and standards-based preparation of certified PGA professionals via our PGA Professional Golf Management program.
Greenwood Genetics Center	Non-Governmental Organization	The Clemson-GCC partnership provides a core campus for recruiting research and development companies engaged in human diagnostics, cognitive development, central nervous system, autism, birth defects, cancer and inflammatory diseases. The collaborative seeks new discoveries in genetic diagnostics and epigenetic therapeutics, and will expand Clemson University's existing doctoral program in genetics, create an internationally competitive research and development team and expand research capabilities at the GCC's J.C. Self Institute.
Academic Global Partnerships (various)	Higher Education Institute	Clemson University, through its Office of Global Engagement, has existing partnerships and exchange agreements in over 60 countries that fulfill the strategic educational, research, economic, and public service goals of the University. These partnerships, that are established and operate through memoranda of understanding, student exchange agreements, and activity agreements, may be viewed via the database at https://alpha.ucosmic.com/
Corporate/Business partnerships (various)	Private Business Organization	Clemson University has myriad partnerships with international, national, regional, state, and local businesses that fulfill mutual goals regarding education, workforce development, research and intellectual property, service, and economic development.
Individual and Private Foundation Partnerships (various)	Individual	Clemson University has myriad partnerships with individual donors and philanthropic organizations that fulfill mutual goals and interests regarding education, research, economic development, public service and engagement, and athletics.
National Laboratories (various)	Federal Government	Clemson University has multiple partnerships with various national laboratories and federal agencies that fulfill mutual goals regarding research, development, and public engagement. An example is our partnership with Svannah River National Laboratory, the Pacific Northwest National Laboratory, Oak Ridge National Laboratory, and the Department of Defense to enhance and protect the U.S. national electrical grid.

These responses were submitted for the FY 2020-2021 Accountability Report by the

CLEMSON UNIVERSITY

Name of Partner Entity	Type of Partner Entity	Description of Partnership
City of Clemson	Local Government	Clemson University's partnership with the City of Clemson, which is realized through their Joint City-University Advisory Board and their joint membership in the International Town Gown Association, functions on a daily basis to ensure provision of essential services to both City residents and University citizens, co-fund joint projectsand programming initiatives that serve both entities' missions, facilitate comprehensive strategic planning by both entities, and provide an attractive environment in which City residents and University citizens can thrive.
Various		Clemson's Cooperative Education Program partners with various entities of various natures to provide our undergraduate students with mentored work experience in their chosen field while benefiting the organizations where they work.
Various SC elementary, middle, and high schools	K-12 Education Institute	Clemson faculty, staff, and students in our Center of Excellence for Innovation in Mathematics and Science Education, National Dropout Prevention Center/Network, and Reading Recovery and Early Literacy Traning Center for South Carolina partner with K-12 teachers, administrators, and students to explore and initiate programs and methods that enhance K-12 student access and success, and disseminate valuable information, research, and results to the K-12 community.
Institute of Food Technologists Higher Education Review Board	Professional Association	Clemson's partnership with this program accrediting body ensures standards-based evidence-backed quality in the Food Technology concentration our BS Food Science and Human Nutrition baccalaureate program.

**FY 2020-2021 Agency Accountability Report
Reports Responses:**

**These responses were submitted for the FY 2020-2021 Accountability Report by the
CLEMSON UNIVERSITY**

Report Name	Law Number (If required)	Summary of Information Requested in the Report	Most Recent Submission Date	Reporting Frequency	Type of Entity	Method to Access the Report	Direct access hyperlink or agency contact
11.14 Other Funded FTE Revenue		Prepared and submitted by the CU Budget Office, includes documentation that all requested Other Funded FTEs can be fully funded by CU Other Fund sources.	09/25/2020	Annually	South Carolina state agency or agencies	Electronic copy available upon request	Primary: Tyler Saas, Clemson University Budget Office ; Secondary: David Bailey, Clemson University Budget Office
117.26 - Agency Travel Report		Minimum of top 10% of employees of whom travel expenses and registration fees were paid within the agency, not to exceed the top twenty-five travelers	09/15/2020	Annually	Legislative entity or entities	Available on agency's website	https://cg.sc.gov/financial-reports/travel-reports
117.34 Debt Collection Reports		Reporting outstanding debt and all methods the agency used to collect the debt.	02/28/2021	Annually	Legislative entity or entities AND South Carolina state agency or agencies	Electronic copy available upon request	Primary: Sherri Rowland, Clemson University Accounting Services ; Secondary: n/a
117.58 - Year-End Financial Statements		Final Audited Financial Statement/Report	10/15/2020	Annually	South Carolina state agency or agencies	Available on agency's website	https://www.clemson.edu/finance/controller/annualreports/
117.73 - Fines & Fees Report		All aggregate amounts of fines and fees that were charged and collected by the state agency in the prior fiscal year.	09/01/2020	Annually	Legislative entity or entities	Available on agency's website	https://www.clemson.edu/finance/controller/resources.html
3 Year Financial Plan		Estimate planned general fund expenditures for the next three fiscal years.	10/15/2020	Annually	South Carolina state agency or agencies	Electronic copy available upon request	Primary: Tyler Saas, Clemson University Budget Office ; Secondary: n/a
3.1 Expenditure of Lottery Funds		Prepared and submitted by the CU Budget Office, in conjunction with Financial Aid, letter stating policy for expenditure of lottery funds	10/01/2020	Annually	South Carolina state agency or agencies	Electronic copy available upon request	Primary: Tyler Saas, Clemson University Budget Office ; Secondary: Jeff Holliday and Elizabeth Milam, Financial Aid
A-133 Audit		External audit on Clemson A-133/research	10/01/2020	Annually	Other	Electronic copy available upon request	Primary: Sherri Rowland, Clemson University Accounting Services ; Secondary: Tracy Walters, Clemson University Grants and Contracts
Academic Performance Program		Academic and Academic Eligibility data on all scholarship athletes	09/30/2020	Annually	Other	Available on another website	https://www.ncaa.org/

**These responses were submitted for the FY 2020-2021 Accountability Report by the
CLEMSON UNIVERSITY**

Report Name	Law Number (If required)	Summary of Information Requested in the Report	Most Recent Submission Date	Reporting Frequency	Type of Entity	Method to Access the Report	Direct access hyperlink or agency contact
Accredited Unit Annual Report		Physical support areas, organizational structure, animal numbers used	01/15/2021	Annually	Other	Electronic copy available upon request	Primary: Robin Tyndall, Director Clemson University Office of Research Compliance ; Secondary: n/a
Affirmative Action Plan		Affirmative Action Plan support data is prepared annually but not submitted unless plan is audited	03/01/2021	Annually	Entity within federal government	Electronic copy available upon request	Primary: Jeremy King, Clemson University Institutional Research ; Secondary: Juan Xu, Clemson University Institutional Research
Affirmative Action Planning File and Employee Roster		Affirmative Action Plan support data	03/01/2021	Twice a year	South Carolina state agency or agencies	Electronic copy available upon request	Primary: Jeremy King, Clemson University Institutional Research ; Secondary: Juan Xu, Clemson University Institutional Research
Agency Accountability Report	§1-1-810	The report "must contain the agency's or department's mission, objectives to accomplish the mission, and performance measures that show the degree to which objectives are being met." Agencies must "identify key program area descriptions and expenditures and link these to key financial and performance results measures."	09/15/2021	Annually	Governor or Lt. Governor AND Legislative entity or entities	Provided to LSA for posting online	Primary: Jeremy King, Clemson University Institutional Research ; Secondary: n/a
Annual Application for Registration Exemption		Required filing to verify that the University is classified as a "public charity" as a political subdivision and agency of the State	11/15/2020	Annually	South Carolina state agency or agencies	Electronic copy available upon request	Primary: Sherri Rowland, Clemson University Accounting Services ; Secondary: Dionne Simmons, Clemson University Accounting Services
Annual Report of Research Facility APHIS form 7023	7 U.S.C	USDA/APHIS requires annual report of numbers of animals used which are covered by the Animal Welfare Act	11/20/2020	Annually	Entity within federal government	Electronic copy available upon request	Primary: Robin Tyndall, Director Clemson University Office of Research Compliance ; Secondary: n/a
Athletics Audit		External audit on Clemson Athletics		Annually	Other	Electronic copy available upon request	Primary: Dan Radakovich, Clemson University Director of Athletics ; Secondary: Graham Neff, Clemson University Athletics

**These responses were submitted for the FY 2020-2021 Accountability Report by the
CLEMSON UNIVERSITY**

Report Name	Law Number (If required)	Summary of Information Requested in the Report	Most Recent Submission Date	Reporting Frequency	Type of Entity	Method to Access the Report	Direct access hyperlink or agency contact
Authorization of Federal Funds Fiscal Year Appropriation Act		Review of federal projects - grants. See SC Federal and Other Funds Oversight Act (Title 2, Chapter 65 of the SC Code of Laws, 1976 as amended)	02/15/2021	Annually	South Carolina state agency or agencies	Electronic copy available upon request	Primary: Tracy Walters, Clemson University Grants and Contracts Administration ; Secondary: n/a
Bonuses		Section 117.55 of the 2016-2017 Appropriations Act - Name, Funding Sources, and reasons for any employee bonuses. The employing agency must report this information on or before August thirty-first of each year and must include the total amount and source of the bonus received by the employee during the preceding fiscal year (July first through June thirtieth).	08/31/2020	Annually	South Carolina state agency or agencies	Electronic copy available upon request	Primary: Ale Kennedy, Clemson University HR ; Secondary: Greg Carlton, Clemson University HR
CAEP Annual Report	SC Reg 43-90	Teacher Preparation program effectiveness, alumni satisfaction, completer numbers, graduation rates, employability, etc.	07/21/2020	Annually	Other	Available on another website	https://www.clemson.edu/education/about/annual-reporting/caep-reporting.html
CARES ACT Federal Employment Tax Credits	Proviso 117.156	Proviso 117.156 (GP: CARES Act Federal Employment Tax Credits) Colleges, universities, and entities that provide medical and hospital care, whose employees are employees of the State of South Carolina or any political subdivision thereof, shall be authorized to contract directly with private parties to provide services related to federal employment tax credits under the Federal CARES Act of 2020 as extended to such state employees under Section 207 of the Taxpayer Certainty and Disaster Tax Relief Act of 2020. Includes best estimate of the dollar amount of credits your institution will receive from this program. How many employees you anticipate receiving credits for? When you anticipate receiving the funding? And, whether you anticipate contracting out for services related to obtaining these credits (as allowed in the proviso), or whether this will be handled internally?		Other	South Carolina state agency or agencies	Electronic copy available upon request	Primary: Sherri Rowland, Clemson University Accounting Services ; Secondary: n/a

**These responses were submitted for the FY 2020-2021 Accountability Report by the
CLEMSON UNIVERSITY**

Report Name	Law Number (If required)	Summary of Information Requested in the Report	Most Recent Submission Date	Reporting Frequency	Type of Entity	Method to Access the Report	Direct access hyperlink or agency contact
Census Annual Report		Count of employees	04/01/2021	Annually	Entity within federal government	Electronic copy available upon request	Primary: Jeremy King, Clemson University Institutional Research ; Secondary: Juan Xu, Clemson University Institutional Research
CHE 100 Report		Required Tuition and Fees for Full-Time Students for the requested academic year	08/01/2020	Annually	South Carolina state agency or agencies	Electronic copy available upon request	Primary: Tyler Saas, Clemson University Budget Office ; Secondary: David Bailey, Clemson University Budget Office
CHE Institutional Effectiveness Report	59-101-350	By statute (Section 59-101-350): Student scores on professional examinations with detailed information on state and national means, passing scores, and pass rates, as available, and with information on such scores over time, and the number of students taking each exam.		Annually	South Carolina state agency or agencies	Available on agency's website	https://www.clemson.edu/institutional-effectiveness/metrics/
CHE Management Information System		Data on students enrolled, course enrollment, course scheduling, course instructors, faculty data, facility data, scholarship data, free credits summary, and degrees awarded		Twice a year	South Carolina state agency or agencies	Available on another website	https://www.che.sc.gov/DataPublications.aspx
Class II Landfills per SC Hazardous Waste Management Act Title 44 - Health, Chapter 56		Maintain Daily records of the actual weight in tons of waste received; and the particular grid location of the area currently being used. Fiscal year report (July 1 to June 30) due to DHEC September 1 identifying the actual weight in tons or volume in cubic yards of wastes received. Maintain records for 3 years.	09/01/2020	Annually	South Carolina state agency or agencies	Electronic copy available upon request	Primary: Jim Grieger, Clemson University Occupational and Env Safety ; Secondary: n/a
Clean Air Act - Major Stationary Source Title V Permit No. 1880-0010		Air emissions inventory report for previous 12 months.	02/14/2021	Every 3 years	South Carolina state agency or agencies	Electronic copy available upon request	Primary: Todd Barnette, Clemson University Facilities Support Services ; Secondary: Tony Putnam, Clemson University Campus Utilities
Clean Air Act - Major Stationary Source Title V Permit No. 1880-0010		Annual NESHAP Report must be prepared by March 1 regardless. Annual NESHAP Report must be submitted by March 15 if there has been a deviation. If there was NOT a deviation the Annual NESHAP Report must be prepared by March 1 and kept on file.	02/14/2021	Annually	South Carolina state agency or agencies	Electronic copy available upon request	Primary: Todd Barnette, Clemson University Facilities Support Services ; Secondary: Tony Putnam, Clemson University Campus Utilities

**These responses were submitted for the FY 2020-2021 Accountability Report by the
CLEMSON UNIVERSITY**

Report Name	Law Number (If required)	Summary of Information Requested in the Report	Most Recent Submission Date	Reporting Frequency	Type of Entity	Method to Access the Report	Direct access hyperlink or agency contact
Clean Air Act- mandatory greenhouse gas (GHG) reporting requirements for owners and operators of certain facilities that directly emit GHG.		Effective 12/29/09, the university is required to submit an annual (calendar year) report on greenhouse gas emissions to the EPA. Federal Reg. 40 CFR Parts 86	03/31/2021	Annually	Entity within federal government	Electronic copy available upon request	Primary: Todd Barnette, Clemson University Facilities Support Services ; Secondary: Tony Putnam, Clemson University Campus Utilities
Clemson University Annual Report		Annual Review of programs and centers based on student learning and administrative outcomes, goals, and measures	10/15/2020	Annually	Other	Electronic copy available upon request	Primary: Jeremy King, Clemson University Institutional Research ; Secondary: Kent Ellison, Director of Assessment and Learning Systems
College Board Survey		The purpose is to college information about financial aid provided to various groups of undergraduate students and military/veteran benefits.	02/01/2021	Annually	Other	Electronic copy available upon request	Primary: Jeremy King, Clemson University Institutional Research ; Secondary: Juan Xu, Clemson University Institutional Research
Common Data Set		The purpose is to provide all involved in a student's transition into higher education information such as admissions, enrollment, academic offering, services, resources and financial aid.	02/01/2021	Annually	Other	Electronic copy available upon request	Primary: Jeremy King, Clemson University Institutional Research ; Secondary: Juan Xu, Clemson University Institutional Research
Comprehensive Annual Financial Report (CAFR)		Audited financial statements of the University and its Component Units	10/30/2020	Annually	South Carolina state agency or agencies	Available on agency's website	https://www.clemson.edu/finance/controller/annualreports/
Comprehensive Permanent Improvement Program	2-47-55	Five year plan of all capital projects being proposed for execution by the University. Year 1 requests are for formal approval while years 2-5 are submitted for planning.	06/15/2021	Annually	Legislative entity or entities AND South Carolina state agency or agencies	Electronic copy available upon request	Primary: Tyler Saas, Clemson University Budget Office ; Secondary: David Watson, Clemson University, Budget Office.
Counseling Programs mid cycle review		Mid cycle review of Clinical Mental Health and School Counseling Programs		Other	Other	Electronic copy available upon request	Primary: Lisa Bona, Clemson University Student Affairs Operations ; Secondary: n/a
COVID 19 Impacts Information		CHE requests enrollment numbers/estimates, discussion of reopening plans and scenarios		Other	South Carolina state agency or agencies	Electronic copy available upon request	Primary: Tyler Saas, Clemson University Budget Office ; Secondary: n/a

**These responses were submitted for the FY 2020-2021 Accountability Report by the
CLEMSON UNIVERSITY**

Report Name	Law Number (If required)	Summary of Information Requested in the Report	Most Recent Submission Date	Reporting Frequency	Type of Entity	Method to Access the Report	Direct access hyperlink or agency contact
CTP-Intellectual Disabilities Report		Federal government required annual reporting of campus based expenditures related to the Clemson Life program.	10/01/2020	Annually	Entity within federal government	Electronic copy available upon request	Primary: Elizabeth Milam, Clemson University Director of Financial Aid ; Secondary: Jeff Holliday, Clemson University Financial Aid
Current Employment Statistics		Reporting the employee count for all employees, women employees, and faculty members.	06/25/2021	Monthly	Entity within federal government	Available on another website	https://cesdata.bls.gov/CESLite/?respondent=450008093
Disbursements		Report listing state scholarships		Other	South Carolina state agency or agencies	Electronic copy available upon request	Primary: Elizabeth Milam, Clemson University Director of Financial Aid ; Secondary: Jeff Holliday, Clemson University Financial Aid
Dual Employment		Provides Paying and Home agency and dollar amounts paid on each employee dually employed.	10/04/2020	Annually	South Carolina state agency or agencies	Available on another website	https://admin.sc.gov/dshr/types_of_pay
Equity in Athletics Disclosure Act (EADA) Report		The Equity in Athletics Disclosure Act requires co-educational institutions of postsecondary education that participate in a Title IV, federal student financial assistance program, and have an intercollegiate athletic program, to prepare an annual report to the Department of Education on athletic participation, staffing, and revenues and expenses, by men's and women's teams. The Department will use this information in preparing its required report to the Congress on gender equity in intercollegiate athletics.	10/31/2020	Annually	Entity within federal government	Available on agency's website	https://clemonsontigers.com/equity-report/
Fair Market Value of Residences		Section 117.15 of the 2016-2017 Appropriations Act (Allowance for Residences and Compensation Restrictions) - Report provides fair market value of President's house.	10/04/2020	Annually	South Carolina state agency or agencies	Electronic copy available upon request	Primary: Ale Kennedy, Clemson University HR ; Secondary: Greg Carlton, Clemson University HR
Federal Clearinghouse Data Collection Form		Expenditures on Federal Awards	11/15/2020	Annually	Entity within federal government	Available on another website	https://harvester.census.gov/facweb/
Fines and Assessment Remittances		Required by State Victim's Rights Laws	06/30/2021	Monthly	South Carolina state agency or agencies	Electronic copy available upon request	Primary: Tyler Saas, Clemson University Budget Office ; Secondary: Sarah Reeves, Clemson University Budget Office

**These responses were submitted for the FY 2020-2021 Accountability Report by the
CLEMSON UNIVERSITY**

Report Name	Law Number (If required)	Summary of Information Requested in the Report	Most Recent Submission Date	Reporting Frequency	Type of Entity	Method to Access the Report	Direct access hyperlink or agency contact
Fiscal Operations Report and Application to Participate (FISAP)		Federal government required annual review of the awarding of Title IV Campus-based funds (SEOG, FWS & Perkins) from previous academic year. Also requires request for funding for next academic year.	10/01/2020	Annually	Entity within federal government	Electronic copy available upon request	Primary: Elizabeth Milam, Clemson University Director of Financial Aid ; Secondary: Jeff Holliday, Clemson University Financial Aid
Furlough	8-11-192 8-11-193	S.C. Code Sections 8-11-192 and 8-11-193; Sections 117.68, 117.71 and 117.75 of the 2016-2017 Appropriations Act - State agencies shall report the prior year's results to the Department of Administration by August fifteenth, of the current fiscal year. Report shows Division, # of employees, estimated cost savings & # of days furloughed.	08/15/2020	Annually	South Carolina state agency or agencies	Available on agency's website	https://admin.sc.gov/sites/default/files/state_hr/Mandator y%20Furlough%20Points%20-%20Higher%20Ed%20Agencie s.pdf
Graduation Success Rate		Graduation data scholarship athletes	06/01/2021	Annually	Other	Available on another website	https://www.ncaa.org/
Groundwater Testing and Reporting Requirements per SC Hazardous Waste Management Act Title 44 - Health, Chapter 57		Twice a year (April /October) testing and reporting including a summary of all analytical testing performed, a determination of the technical sufficiency of the monitoring, a determination of groundwater elevations, flow directions and rates.	04/01/2021	Twice a year	South Carolina state agency or agencies	Electronic copy available upon request	Primary: Jim Grieger, Clemson University Occupational and Env Safety ; Secondary: n/a
Hazardous Waste Minimization Report	61-79	R.61-79 regulations verifying CU LQG facility has implemented a Hazardous Waste Minimization Plan	01/30/2021	Annually	South Carolina state agency or agencies	Electronic copy available upon request	Primary: Jim Grieger, Clemson University Occupational and Env Safety ; Secondary: n/a
Hazardous Waste Notice of Activity	61-79	R.61-79 annually for all CU facilities that are classified under the regulations as Small Quantity Generators of Hazardous Waste	01/30/2021	Annually	South Carolina state agency or agencies	Electronic copy available upon request	Primary: Jim Grieger, Clemson University Occupational and Env Safety ; Secondary: n/a
Hazardous Waste Quarterly Report	61-79	By R.61-79 Hazardous Waste listed by assigned Index Numbers in pounds generated on site and pounds shipped off site, transporters and their DOT permit #s, TSDF EPA ID #s, new Hazardous Waste Streams generated each quarter.	05/30/2021	Quarterly	South Carolina state agency or agencies	Electronic copy available upon request	Primary: Jim Grieger, Clemson University Occupational and Env Safety ; Secondary: n/a

**These responses were submitted for the FY 2020-2021 Accountability Report by the
CLEMSON UNIVERSITY**

Report Name	Law Number (If required)	Summary of Information Requested in the Report	Most Recent Submission Date	Reporting Frequency	Type of Entity	Method to Access the Report	Direct access hyperlink or agency contact
HEOA Title II	PL 110-315	Report on basic aspects of teacher preparation program including admissions requirements; number of students enrolled by gender, race and ethnicity; supervised clinical experiences; number of students enrolled by major and subject area; number of program completers; goals for increasing number of teachers in critical shortage areas; how students performed on initial state licensing and certification assessments; current accreditation status; plans for preparing teachers to use technology, work with students with disabilities, and teach students who have limited English proficiency.	04/30/2021	Annually	Entity within federal government	Available on another website	https://title2.ed.gov/
Independent Accountant's Report on Application of Agreed Upon Procedures - Clemson University Intercollegiate Athletics Program		Agreed Upon Procedures Report required by the NCAA to include the Statement of Revenues, Expenditures and Transfers for the University's Intercollegiate Athletics Program	10/01/2020	Annually	Other	Available on agency's website	https://www.clemson.edu/finance/controller/annualreports/
Independent Auditor's Report on Supplemental Information		Financial statements regarding supplemental information on Municipal Court Fines, Assessments, Remittances, and Schedule of Victim Services, Activities, Funds Allotted, Expended and Carried Forward were fairly stated.		Annually	Other	Electronic copy available upon request	Primary: Tyler Saas, Clemson University Budget Office ; Secondary: Sarah Reeves, Clemson University Budget Office
Infectious Waste Generator Registration	61-105	R. 61-105 regulations requires registration when any CU facility generates infectious waste		Other	South Carolina state agency or agencies	Electronic copy available upon request	Primary: Jim Grieger, Clemson University Occupational and Env Safety ; Secondary: n/a
Infectious Waste Generator Renewal Form	61-105	R. 61-105		Every Three years	South Carolina state agency or agencies	Electronic copy available upon request	Primary: Jim Grieger, Clemson University Occupational and Env Safety ; Secondary: n/a
Institutional Biosafety Committee (IBC) Registration		NIH Guidelines requires annual update of members of IBC Committee and activity	01/14/2021	Annually	Entity within federal government	Electronic copy available upon request	Primary: Robin Tyndall, Director Clemson University Office of Research Compliance ; Secondary: n/a
Integrated Postsecondary Education Data System (IPEDS)	Higher Education Act	Summary information on students, courses, tuition, employees.	04/07/2021	Annually	Other	Available on another website	https://nces.ed.gov/ipeds
iPEDS Survey		The purpose is to college information about financial aid provided to various groups of undergraduate students and military/veteran benefits.	02/10/2020	Annually	Other	Available on another website	https://nces.ed.gov/ipeds/use-the-data

**These responses were submitted for the FY 2020-2021 Accountability Report by the
CLEMSON UNIVERSITY**

Report Name	Law Number (If required)	Summary of Information Requested in the Report	Most Recent Submission Date	Reporting Frequency	Type of Entity	Method to Access the Report	Direct access hyperlink or agency contact
Jeanne Clery Disclosure of Campus Security Policy and Campus Crime Statistics Act Report - Annual Security and Fire Safety Report		Disclosure of information about crime on or near university locations/sites.	10/01/2020	Annually	Entity within federal government	Available on agency's website	https://www.clemson.edu/cu/safety/cupd/crime-reporting-statistics/
Leave Transfer Pool Program	8-11-770 19-711.02	S.C. Code Section 8-11-770; State HR Regulations 19-711.02 - Total hours and cost for donated and taken Sick and Annual Leave, as well as, remaining balances in pool.	03/01/2021	Annually	South Carolina state agency or agencies	Available on agency's website	https://admin.sc.gov/sites/default/files/state_hr/Leave%20Transfer%20Guidelines.pdf
Livestock & Poultry Health - SC Meat & Poultry Inspection Department		Review of the South Carolina Meat and Poultry Inspection Program (Required by Federal Regulation)	12/20/2020	Annually	Entity within federal government	Available on another website	https://www.fsis.usda.gov/
Merritt Research Services Survey		Financial and demographic data	10/15/2020	Annually	Other	Electronic copy available upon request	Primary: Sherri Rowland, Clemson University Accounting Services ; Secondary: Samantha Jones, Clemson University Accounting Services
Monetary Awards		Section 117.15 of the 2016-2017 Appropriations Act - (Allowance for Residences and Compensation Restrictions)	08/31/2020	Annually	South Carolina state agency or agencies	Electronic copy available upon request	Primary: Ale Kennedy, Clemson University HR ; Secondary: Greg Carlton, Clemson University HR
Moody's Annual Public College/University Tuition Survey		Financial and demographic data	10/15/2020	Annually	Other	Electronic copy available upon request	Primary: Sherri Rowland, Clemson University Accounting Services ; Secondary: Samantha Jones, Clemson University Accounting Services
Multiple Worksite Report		Multi-location employers provide employment and wage data for all of their establishments covered under one Unemployment Account in a State. By SC counties, report number of employees on the 12th of each month, as well as total wages for the quarter.	04/30/2021	Quarterly	Entity within federal government	Available on another website	https://idcf.bls.gov/authentication/login
National Collegiate Athletics Association (NCAA) - Membership Financial Data		Prepared and submitted by the Athletics Department	01/15/2021	Annually	Other	Electronic copy available upon request	Primary: Dan Radakovich, Clemson University Director of Athletics ; Secondary: Graham Neff, Clemson University Athletics

**These responses were submitted for the FY 2020-2021 Accountability Report by the
CLEMSON UNIVERSITY**

Report Name	Law Number (If required)	Summary of Information Requested in the Report	Most Recent Submission Date	Reporting Frequency	Type of Entity	Method to Access the Report	Direct access hyperlink or agency contact
National Science Foundation - Higher Education Research and Development Survey		Information on R&D expenditures by field of research and source of funds; types of research and expenses and headcounts of R&D personnel.	01/31/2021	Annually	Entity within federal government	Available on another website	https://www.hersurvey.org/controllers/account.cfc?method=login&redirect=1
NCAA Revenue Distribution Reporting		The NCAA annually requires member institutions to report their uses of various funds that are provided, directly or indirectly through the member institution's conference.	08/31/2020	Annually	Other	Electronic copy available upon request	Primary: Dan Radakovich, Clemson University Director of Athletics ; Secondary: Graham Neff, Clemson University Athletics
NCAA Sports Sponsorship and Demographics		The NCAA requires member institution's to report on the number of sports sponsored and to detail the demographic information of the athletic department (i.e., student-athletes, coaches, administration and staff)	08/01/2020	Annually	Other	Electronic copy available upon request	Primary: Dan Radakovich, Clemson University Director of Athletics ; Secondary: Graham Neff, Clemson University Athletics
New degree programs and terminated programs		Detailed proposals for new certificates and degree programs require approval from the CHE.	05/01/2021	Other	South Carolina state agency or agencies	Available on another website	http://www.che.sc.gov/InstitutionsEducators/AcademicPolicies,Programs/AcademicPrograms.aspx
New Hire Reporting - Various States	43-5-598	Reporting required information on newly hired or rehired employees with-in 20 days of employee start date to be in compliance with section 43-5-598 of the SC Code of Laws and 42 USC Sec. 653a as part of the Personal Responsibility and Work Opportunity Reconciliation Act of 1996 (Federal Welfare Reform). Includes South Carolina reporting and any reporting for other states as necessary.		Other	Legislative entity or entities AND South Carolina state agency or agencies	Electronic copy available upon request	Primary: Sherri Rowland, Clemson University Accounting Services ; Secondary: Stefanie Cram, Clemson University Payroll
NIH OBA Annual Report	99-158	OLAW requires annual updates including program changes, semiannual program evaluations and facility inspections	01/23/2021	Annually	Entity within federal government	Electronic copy available upon request	Primary: Robin Tyndall, Director Clemson University Office of Research Compliance ; Secondary: n/a
NPDES Annual Discharge Monitoring Reports per Reg 61-9 Section 122.5. State Permit NPDES SC0034843 & SC0022004.		WWTP Discharge Information and CEF Condenser Water Discharge Information.	05/28/2021	Monthly	South Carolina state agency or agencies	Electronic copy available upon request	Primary: Todd Barnette, Clemson University Facilities Support Services ; Secondary: Tony Putnam, Clemson University Campus Utilities

**These responses were submitted for the FY 2020-2021 Accountability Report by the
CLEMSON UNIVERSITY**

Report Name	Law Number (If required)	Summary of Information Requested in the Report	Most Recent Submission Date	Reporting Frequency	Type of Entity	Method to Access the Report	Direct access hyperlink or agency contact
NPDES for Small Municipal Separate Storm Sewer Systems (MS4s), SCR03000, State Permit SC037706	48-1-10	Report program and compliance to SCDHEC. Renewal application due every five years with issuance of new state general permit. Clean Water Act Reg 61-9 Section 48-1-10	04/01/2021	Annually	South Carolina state agency or agencies	Electronic copy available upon request	Primary: Todd Barnette, Clemson University Facilities Support Services ; Secondary: Tony Putnam, Clemson University Campus Utilities
NPDES for Storm Water Discharges Associated with Industrial Activities, SCR00000, State Permit SC001134	48-1-10	Maintain Monthly and Annual Inspections onsite for SCDHEC reviews for the Waste Water Treatment Facility. Clean Water Act Reg 61-9 Section 48-1-10	09/20/2020	Annually	South Carolina state agency or agencies	Electronic copy available upon request	Primary: Todd Barnette, Clemson University Facilities Support Services ; Secondary: Tony Putnam, Clemson University Campus Utilities
NRC Form 742. Material Balance Report		Special Nuclear Material received, produced, possessed, transferred, consumed, disposed of, or lost.	01/22/2021	Annually	Entity within federal government	Electronic copy available upon request	Primary: Jim Grieger, Clemson University Occupational and Env Safety ; Secondary: n/a
NRC Form 742C. Physical Inventory Listing		Physical Inventory of Special Nuclear Material	01/22/2021	Annually	Entity within federal government	Electronic copy available upon request	Primary: Jim Grieger, Clemson University Occupational and Env Safety ; Secondary: n/a
Organizational Charts		Section 117.48 of the 2016-2017 Appropriations Act (Organizational Charts) and S.C. Code Section 1-1-970 - Departments and institutions of state government shall furnish to the Human Resources Division (1) a current personnel organizational chart annually no later than September first. showing all authorized positions, class title, class code, position number and indications as to whether such positions are filled or vacant. In addition, the organizational chart shall clearly identify those employees who are exempt from the State Employee Grievance Procedure Act.	09/01/2020	Annually	South Carolina state agency or agencies	Electronic copy available upon request	Primary: Ale Kennedy, Clemson University HR ; Secondary: Greg Carlton, Clemson University HR
Other Funds Impact		Estimate of the cost to agency in Other Funds for each 1% increase in employer pension contribution and each 1% base pay increase		Other	South Carolina state agency or agencies	Electronic copy available upon request	Primary: Tyler Saas, Clemson University Budget Office ; Secondary: David Bailey, Clemson University Budget Office

**These responses were submitted for the FY 2020-2021 Accountability Report by the
CLEMSON UNIVERSITY**

Report Name	Law Number (If required)	Summary of Information Requested in the Report	Most Recent Submission Date	Reporting Frequency	Type of Entity	Method to Access the Report	Direct access hyperlink or agency contact
Other Funds Survey		Annual reporting of revenues, expenses, and balances information by state funds.	11/15/2020	Annually	South Carolina state agency or agencies	Electronic copy available upon request	Primary: Sherri Rowland, Clemson University Accounting Services ; Secondary: Wendy Hapeshis, Clemson University Accounting Services
Payroll Report		Annual reporting of various data used to determine workers compensation annual premiums. Data reported includes: - Summary page showing Number of Employees by WC class codes and reported payroll - Summary page showing university contacts for executive, premium, safety and claims personnel - Copies of 941's - Patient Contact Courses showing total number of students enrolled in course where students come in contact with medical patients - Submission of Application for Drug and Alcohol Free Workplace Premium Credit Program - Aircraft Information - Pilot information - Fire/EMS Volunteer Roster - Emergency Response Student Roster, showing students with an academic EMR practicum - Foreign Travel Report listing faculty and staff who left the country for business related travel	08/15/2020	Annually	South Carolina state agency or agencies	Electronic copy available upon request	Primary: Sherri Rowland, Clemson University Accounting Services ; Secondary: Amelia Hood, Clemson University Payroll
Peterson's Annual Survey		The purpose is to collect information about financial aid provided to various groups of undergraduate students and military/veteran benefits.	04/01/2021	Annually	Other	Electronic copy available upon request	Primary: Elizabeth Milam, Clemson University Director of Financial Aid ; Secondary: Jeff Holliday, Clemson University Financial Aid
Pooled Fringe Rate Submission		Projected salaries and expenses by pooled fringe category, each of which is compiled of several benefit program codes, for the submission year. These projections are based two-year prior actuals plus adjustments for expected changes. (i.e. FY21 is based on FY19)	12/31/2020	Annually	Entity within federal government	Available on agency's website	http://www.clemson.edu/finance/controller/rates/

**These responses were submitted for the FY 2020-2021 Accountability Report by the
CLEMSON UNIVERSITY**

Report Name	Law Number (If required)	Summary of Information Requested in the Report	Most Recent Submission Date	Reporting Frequency	Type of Entity	Method to Access the Report	Direct access hyperlink or agency contact
Proviso 11.15 - Abatements	59-112-70	Total number of out-of-state undergraduate students during prior fiscal year that received abatement of rates pursuant to Section 59-112-70 of the 1976 Code as well as the total dollar amount of abatements received.	11/01/2020	Annually	South Carolina state agency or agencies	Electronic copy available upon request	Primary: Jeremy King, Clemson University Institutional Research ; Secondary: Juan Xu, Clemson University Institutional Research
Proviso 11.16 - Outstanding Institutional Debt		Data on all outstanding institutional debt for the Institution.	11/01/2020	Annually	South Carolina state agency or agencies	Electronic copy available upon request	Primary: Sherri Rowland, Clemson University Accounting Services ; Secondary: n/a
Proviso 118.6 - Prohibition of Public Funded Lobbyists		Completion of Lobbyists' Principal Certification Form - Disclosure Report	05/28/2021	Annually	South Carolina state agency or agencies	Electronic copy available upon request	Primary: Angie Leidinger, Clemson University Governmental Affairs ; Secondary: Tyler Saas, Clemson University Budget Office
Quarterly MBE Report		Procurement activity on state certified MBE suppliers	08/12/2020	Quarterly	Governor or Lt. Governor	Available on another website	http://osmba.sc.gov/resources.html
Quarterly Procurement Reports		Procurement activity for reporting period to include sole sources, emergency procurements, contract purchases, etc...	04/19/2021	Quarterly	South Carolina state agency or agencies	Available on another website	https://procurement.sc.gov/audit/reports#ditem-1293
Real Property Management Data Report	Section 1-11-58	Real property management data for all University owned property and buildings.	06/28/2020	Annually	South Carolina state agency or agencies	Electronic copy available upon request	Primary: Laura Stoner, Clemson University Land & Capital Asset Stewardship ; Secondary: n/a
Recovered Materials Processing Facility per S.C. Solid Waste Policy and Management Act of 1991		Requires all universities to report their recycling efforts September 15 each year using Re-TRAC.	09/15/2020	Annually	South Carolina state agency or agencies	Electronic copy available upon request	Primary: Jim Grieger, Clemson University Occupational and Env Safety ; Secondary: n/a
Request for Matching Gift Funds		Agency report for matching gift funds under the Academic Incentive Act of 1997	10/30/2020	Annually	South Carolina state agency or agencies	Electronic copy available upon request	Primary: Debbie Newsom, Clemson University Advancement - Finance & Admin ; Secondary: April Purvis, Clemson University Advancement - Finance & Admin
Research Misconduct Report	65 Fed. Reg. 76,260	Federal regulation (65 Fed. Reg. 76,260) requires annual reporting of research misconduct activity and confirmation of a compliant misconduct policy related to US-DoEd funding.	01/02/2021	Annually	Entity within federal government	Electronic copy available upon request	Primary: Robin Tyndall, Director Clemson University Office of Research Compliance ; Secondary: n/a

**These responses were submitted for the FY 2020-2021 Accountability Report by the
CLEMSON UNIVERSITY**

Report Name	Law Number (If required)	Summary of Information Requested in the Report	Most Recent Submission Date	Reporting Frequency	Type of Entity	Method to Access the Report	Direct access hyperlink or agency contact
Research Misconduct Report	42 C.F.R. Part §93.301	Federal regulation (42 C.F.R. Part §93.301) requires annual reporting of research misconduct allegations and investigations and confirmation of a compliant misconduct policy related to Public Health Services funding.	11/26/2020	Annually	Entity within federal government	Electronic copy available upon request	Primary: Robin Tyndall, Director Clemson University Office of Research Compliance ; Secondary: n/a
Retirement Incentive Program	9-1-1140 9-11-50	S.C. Code Sections 9-1-1140 (H) and 9-11-50 (H) - State agencies shall report the prior year's results to the Department of Administration by August fifteenth, of the current fiscal year. Report shows Total Cost, # of employees, & Cost savings amounts.	08/15/2020	Annually	South Carolina state agency or agencies	Available on agency's website	https://admin.sc.gov/sites/default/files/state_hr/RIP%20Guidelines.pdf
Retirement Reporting		Monthly remittance of liability. Quarterly reporting of employee earnings and withholdings for employee retirement service credit. Adjustments as needed.	06/30/2021	Monthly	South Carolina state agency or agencies	Electronic copy available upon request	Primary: Sherri Rowland, Clemson University Accounting Services ; Secondary: Amelia Hood, Clemson University Payroll
Rule 15c2-12 Disclosures - Athletics Facilities Revenue Bonds		Required to post a copy of the University's CAFR and an Annual Report for Athletic Facilities Revenue Bonds to the Municipal Securities Rulemaking Board website accessible to bond holders	02/01/2021	Annually	Entity within federal government	Available on another website	http://emma.msrb.org/ContinuingDisclosureView/ContinuingDisclosureDetails.aspx?submissionId=EA570736
Rule 15c2-12 Disclosures - Revenue Bonds		Required to post a copy of the University's CAFR and an Annual Report for Revenue Bonds to the Municipal Securities Rulemaking Board website accessible to bond holders	02/01/2021	Annually	Entity within federal government	Available on another website	http://emma.msrb.org/ContinuingDisclosureView/ContinuingDisclosureDetails.aspx?submissionId=ES617245
S. 38 REACH Act Fiscal Impact	59-29-120	Revenue and Fiscal Affairs has requested a fiscal impact statement on S.38 (REACH Act). RFA has asked all public IHLs to review this bill and provide the fiscal impact it would create for your institution.		Other	South Carolina state agency or agencies	Electronic copy available upon request	Primary: Tyler Saas, Clemson University Budget Office ; Secondary: n/a
Safe Water Drinking Act State Permit SC 3910006		Various reports including annual summary of all water sampling and violations. Submit to all water customers.	07/31/2020	Annually	South Carolina state agency or agencies	Electronic copy available upon request	Primary: Todd Barnette, Clemson University Facilities Support Services ; Secondary: Tony Putnam, Clemson University Campus Utilities

**These responses were submitted for the FY 2020-2021 Accountability Report by the
CLEMSON UNIVERSITY**

Report Name	Law Number (If required)	Summary of Information Requested in the Report	Most Recent Submission Date	Reporting Frequency	Type of Entity	Method to Access the Report	Direct access hyperlink or agency contact
Salary Supplements		Section 93.17 of the 2016-2017 Appropriations Act (Compensation-Reporting of Supplemental Salaries) - Any compensation, excluding travel reimbursement, from an affiliated public charity, foundation, clinical faculty practice plan, or other public source or any supplement from a private source to the salary appropriated for a state employee and fixed by the State must be reported by the employing agency to the Department of Administration. The report must include the employee's base salary, amount of the supplement, source of the supplement, and any condition of the supplement. The employing agency must report this information on or before August thirty-first of each year and must include the total amount and source of the salary supplement received by the employee during the preceding fiscal year (July first through June thirtieth).	08/31/2020	Annually	South Carolina state agency or agencies	Available on agency's website	https://admin.sc.gov/dshr/types_of_pay
SC Energy Office Agency Report [Annual Energy Report]	48-52-610	SC Code (§48-52-610 through 680 and §48-52-910) agency annual reports on energy consumption and efforts to reduce energy consumption in the past fiscal	09/15/2021	Annually	South Carolina state agency or agencies	Electronic copy available upon request	Primary: Todd Barnette, Clemson University Facilities Support Services ; Secondary: Tony Putnam, Clemson University Campus Utilities
SC State Treasurer's Revenue Remittance Form		Required by State Treasurer's Office	06/15/2021	Monthly	South Carolina state agency or agencies	Electronic copy available upon request	Primary: Sherri Rowland, Clemson University Accounting Services ; Secondary: Wendy Hapeshis, Clemson University Accounting Services
Southern Association of Colleges and Schools Commission on Colleges (SACSCOC) - Financial Profile		Required by accreditation agency	06/29/2021	Annually	Other	Electronic copy available upon request	Primary: Jeremy King, Clemson University Institutional Research ; Secondary: Samantha Jones, Clemson University Accounting Services

**These responses were submitted for the FY 2020-2021 Accountability Report by the
CLEMSON UNIVERSITY**

Report Name	Law Number (If required)	Summary of Information Requested in the Report	Most Recent Submission Date	Reporting Frequency	Type of Entity	Method to Access the Report	Direct access hyperlink or agency contact
Spending Transparency Report		Searchable website containing three-plus years of data detailing University expenditures by month or by vendor updated monthly		Monthly	South Carolina state agency or agencies	Available on agency's website	https://transpend.app.clemson.edu/
Standard & Poor's College/University Questionnaire		Financial and demographic data	10/15/2020	Annually	Other	Electronic copy available upon request	Primary: Sherri Rowland, Clemson University Accounting Services ; Secondary: Samantha Jones, Clemson University Accounting Services
State ADEPT Report	SS 59-26-30, 59-26-40, SC Reg 43-205.1	Annual Plan for teacher education with program evaluation and assurances		Annually	South Carolina state agency or agencies	Electronic copy available upon request	Primary: Michelle Cook, Clemson University College of Education ; Secondary: Kent Ellison, Clemson University College of Education
State Closing Package		Required by the Comptroller General's Office to assist in the preparation of the Statewide CAFR	10/15/2020	Annually	South Carolina state agency or agencies	Electronic copy available upon request	Primary: Sherri Rowland, Clemson University Accounting Services ; Secondary: Dionne Simmons, Clemson University Accounting Services
Statement of Economic Interest		The statement/report provides information on Source (salary, wages, etc.) and type of any private income in the previous year by the filer or a member of the filer's immediate family. Immediate family means a child residing in the household, a spouse, or an individual claimed as a dependent for income tax purposes, etc.	03/30/2021	Annually	South Carolina state agency or agencies	Available on another website	https://apps.sc.gov/PublicReporting/Index.aspx
Student Financial Aid - EZ Audit		Expenditures of Federal Student Aid	10/31/2020	Annually	Entity within federal government	Available on another website	https://ezaudit.ed.gov/EZWebApp/IntroWarn.do

**These responses were submitted for the FY 2020-2021 Accountability Report by the
CLEMSON UNIVERSITY**

Report Name	Law Number (If required)	Summary of Information Requested in the Report	Most Recent Submission Date	Reporting Frequency	Type of Entity	Method to Access the Report	Direct access hyperlink or agency contact
Telecommuting	8-11-15	State Employee Telecommuting Guidelines - Agency utilization of Telecommuting. Report provides Number of employees by Class Code(job code). Section 8-11-15(B) of the South Carolina Code of Laws says that state agencies “may use alternate work locations, including telecommuting, that result in greater efficiency and cost savings.” Telecommuting is a work arrangement where selected state employees are allowed to perform the normal duties and responsibilities of their positions, through the use of computers or other telecommunication equipment, at home or at another alternate work location apart from the employee's usual location of work. Telecommuting may be a part-time or a full-time arrangement. Agency's have the discretion to offer telecommuting as option to increase efficiency and reduce costs. Telecommuting is not an employee entitlement or right.	08/15/2020	Annually	South Carolina state agency or agencies	Available on agency's website	https://admin.sc.gov/dshr/model_policies
Total FTEs and Vacant FTEs		FTE counts by budget center, including vacant FTE's. Breakout of vacant FTE's that are actively being recruited.	09/30/2020	Annually	Legislative entity or entities AND South Carolina state agency or agencies	Electronic copy available upon request	Primary: Tyler Saas, Clemson University Budget Office ; Secondary: Erin Thomas, Clemson University, Budget Office.
Tower Proviso - 8.4 (ETV: Wireless Communications Tower)	Part 1B Section 8 - H670	Non-proviso tower revenues for state owned towers, buildings, water towers, and state owned property	08/05/2020	Annually	South Carolina state agency or agencies	Electronic copy available upon request	Primary: Laura Stoner, Clemson University Land & Capital Asset Stewardship ; Secondary: n/a
Underground Storage Tank annual registration per the Resource Conservation and Recovery Act		Underground Storage Tank annual registration and postings.		Annually	Entity within federal government	Electronic copy available upon request	Primary: Jim Grieger, Clemson University Occupational and Env Safety ; Secondary: n/a
University Financial Statements External Audit		External audit on Clemson University financial statements, in financial report document		Annually	Other	Available on agency's website	https://www.clemson.edu/finance/controller/annualreports/

**These responses were submitted for the FY 2020-2021 Accountability Report by the
CLEMSON UNIVERSITY**

Report Name	Law Number (If required)	Summary of Information Requested in the Report	Most Recent Submission Date	Reporting Frequency	Type of Entity	Method to Access the Report	Direct access hyperlink or agency contact
US News & World Report Best Colleges Survey		The purpose is to collect information about financial aid provided to various groups of undergraduate students and military/veteran benefits.	05/04/2021	Annually	Other	Electronic copy available upon request	Primary: Sherri Rowland, Clemson University Accounting Services ; Secondary: Samantha Jones, Clemson University Accounting Services
US News and World Report Finance Survey		Finance related data	05/14/2021	Annually	Other	Electronic copy available upon request	Primary: Sherri Rowland, Clemson University Accounting Services ; Secondary: Samantha Jones, Clemson University Accounting Services
USDA Cooperative State Research and Education Centers - SF-425 Annual Report	2 CFR 200.327	Summary of Federal agricultural research and extension expenditures prepared by the Public Service Activities Financial Office and reviewed by the University Controller's Office	12/31/2020	Annually	Entity within federal government	Electronic copy available upon request	Primary: Melissa Kelley, Clemson University PSA ; Secondary: n/a
USDOE EIA-923 Power Plant Operations Report	93-275	FEA Act of 1974 (Public Law 93-275). The survey Form EIA-923 collects detailed electric power data -- monthly -- on electricity generation, fuel consumption, fossil fuel stocks, and receipts at the power plant and prime mover level	06/30/2021	Monthly	Entity within federal government	Electronic copy available upon request	Primary: Todd Barnette, Clemson University Facilities Support Services ; Secondary: Tony Putnam, Clemson University Campus Utilities
USDOE EIA-923 Supplement Report [Annual Electric Generator Report]	93-275	FEA Act of 1974 (Public Law 93-275). The survey Form EIA-923 collects detailed electric power data -- annually -- on electricity generation, fuel consumption, fossil fuel stocks, and receipts at the power plant and prime mover level	03/31/2021	Annually	Entity within federal government	Electronic copy available upon request	Primary: Todd Barnette, Clemson University Facilities Support Services ; Secondary: Tony Putnam, Clemson University Campus Utilities
Vault Inventory Confirmation		Value of cash and investment securities in vault custody of the SC Office of State Treasurer	07/15/2020	Annually	South Carolina state agency or agencies	Electronic copy available upon request	Primary: Sherri Rowland, Clemson University Accounting Services ; Secondary: Wendy Hapeshis, Clemson University Accounting Services

**These responses were submitted for the FY 2020-2021 Accountability Report by the
CLEMSON UNIVERSITY**

Report Name	Law Number (If required)	Summary of Information Requested in the Report	Most Recent Submission Date	Reporting Frequency	Type of Entity	Method to Access the Report	Direct access hyperlink or agency contact
Vets 4212		Information on hiring and employment of veterans	09/15/2020	Annually	Entity within federal government	Electronic copy available upon request	Primary: Jeremy King, Clemson University Institutional Research ; Secondary: Juan Xu, Clemson University Institutional Research
Voluntary Separation Program		Section 117.32 of the 2016-2017 Appropriations Act - The program must be approved by the agency head and the Director of the Human Resources Division based on ability to demonstrate recurring cost savings for realignment and/or permanent downsizing. State agencies shall report the prior year's results to the Department of Administration by August fifteenth, of the current fiscal year. Report shows Total Cost, # of employees, & Cost savings amounts.	08/15/2020	Annually	South Carolina state agency or agencies	Available on agency's website	https://admin.sc.gov/sites/default/files/state_hr/VSP%20Guidelines.pdf
Water Use Report per SC Surface Water Withdrawal, Permitting, Use and Reporting Act. Title 49, Chapter 4 of the SC Code of Laws. State Permit NPDES SC0022004		Monthly water withdrawals from Lake Hartwell. Submit annual report to SCDHEC by January 31. *Beginning January 1, 2011, anyone withdrawing more than 3 million gallons or more in any 1 month from surface waters of SC must obtain a surface water withdrawal permit or, for agricultural withdrawals, register their withdrawal with the Department unless exempt under the Act	01/31/2021	Annually	South Carolina state agency or agencies	Electronic copy available upon request	Primary: Todd Barnette, Clemson University Facilities Support Services ; Secondary: Tony Putnam, Clemson University Campus Utilities
Workforce and Applicant Analysis		Workforce Analysis and Applicant Information	03/01/2021	Twice a year	South Carolina state agency or agencies	Electronic copy available upon request	Primary: Jeremy King, Clemson University Institutional Research ; Secondary: Juan Xu, Clemson University Institutional Research