

<b>AGENCY NAME:</b>	<b>LANDER UNIVERSITY</b>		
<b>AGENCY CODE:</b>	<b>H210</b>	<b>SECTION:</b>	<b>018</b>

---

## Fiscal Year 2020–2021 Accountability Report

---

### SUBMISSION FORM

I have reviewed and approved the data submitted by the agency in the following online forms:

- Reorganization and Compliance
- Strategic Plan Results
- Strategic Plan Development
- Legal
- Services
- Partnerships
- Report or Review

I have reviewed and approved the financial report summarizing the agency's budget and actual expenditures, as entered by the agency into the South Carolina Enterprise Information System.

The information submitted is complete and accurate to the extent of my knowledge.

<b>AGENCY DIRECTOR</b> <b>(SIGN AND DATE):</b>	Signature on file.
<b>(TYPE/PRINT NAME):</b>	Richard E. Cosentino

<b>BOARD/CMSN CHAIR</b> <b>(SIGN AND DATE):</b>	Signature on file.
<b>(TYPE/PRINT NAME):</b>	Linda L Dolny

**FY 2020-2021 Agency Accountability Report**  
**Reorganization and Compliance Responses:**

These responses were submitted for the FY 2020-2021 Accountability Report by the

**LANDER UNIVERSITY**

**Primary Contact:**

First Name	Last Name	Role/Title	Phone	Email Address
Matt	Braaten	AVP Planning, Analytics & Decision-support	864-388-8827	mbraaten@lander.edu

**Secondary Contact**

First Name	Last Name	Role/Title	Phone	Email Address
Ashley	Wilkie	Budget Director	864-388-8305	awilkie@lander.edu

**Agency Mission**

Lander University offers high-demand and market-driven programs to ambitious and talented students in South Carolina and beyond. These programs are delivered in a rich liberal arts environment to produce highly qualified and marketable graduates.

**Adopted in:** 2016

**Agency Vision**

All Lander graduates are educated, well rounded and prepared to continue their education or launch their careers.

**Adopted in:** 2016

**Recommendations for reorganization requiring legislative change.**

No

**Please list significant events related to the agency that occurred in FY 2020-2021.**

Month Started	Month Ended	Description of Event	Agency Measures Impacted	Other Impacts

**Does the agency intend to make any other major reorganization to divisions, departments, or programs to allow the agency to operate more effectively and efficiently in FY 2021-22?**

**Note: It is not recommended that agencies plan major reorganization projects every year. This section should remain blank unless there is a need for reorganization.**

No

**Is the agency in compliance with S.C. Code Ann. § 2-1-220, which requires submission of certain reports to the Legislative Services Agency for publication online and the State Library? See also S.C. Code Ann. § 60-2-20.**

Yes

**If not, please explain why.**

**Is the agency in compliance with various requirements to transfer its records, including electronic ones, to the Department of Archives and History? See the Public Records Act (S.C. Code Ann. § 20-1-10 through 20-1-180) and the South Carolina Uniform Electronic Transactions Act (S.C. Code Ann. § 26-6-10 through 26-10-210).**

Yes

**Does the law allow the agency to promulgate regulations?**

No

---

# SUMMARY OF OUTCOMES FOR FY2021

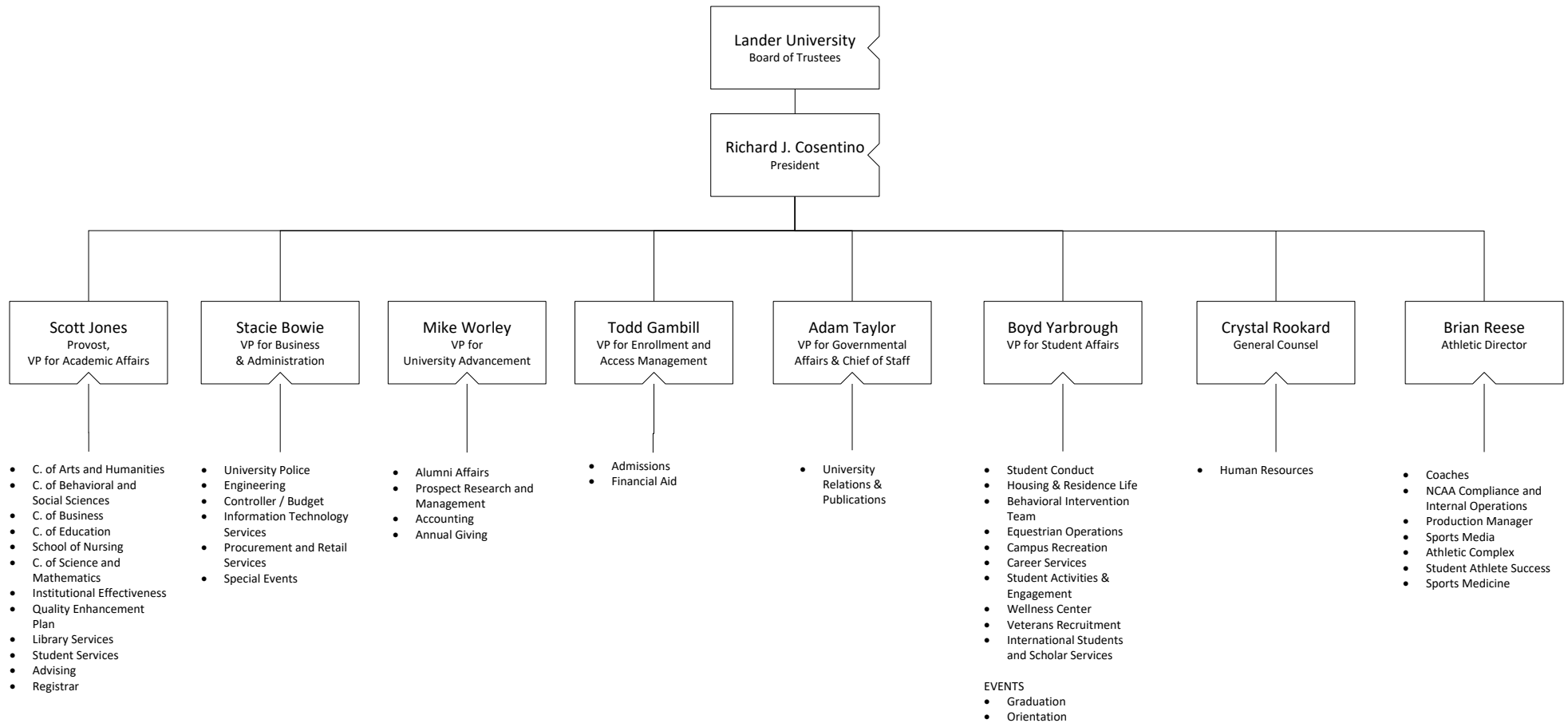
## Lander University

July 1, 2020 – June 30, 2021

1. Increased total headcount enrollment by 9.44%.
2. Began complete website redesign to better accommodate and communicate diverse portfolio of on-campus, online, undergraduate, and graduate programs. 50% complete.
3. Expanded outdoor wireless infrastructure and reach.
4. Opened a Chick-fil-a restaurant on campus by Fall 2020.
5. Expanded campus Starbucks operations to accommodate increased enrollment by Fall 2020.
6. Created donation-stocked food pantry to help students and employees in time of need.
7. Stabilized employment in time of crisis and avoided furloughs and continued to hire new faculty and staff.
8. Procured sufficient amount of personal protection equipment for students, faculty and staff to comply with COVID-related protection measures.
9. Increased the number of online class offerings to 27% by Fall 2020.
10. Expanded outdoor seating capacity to better accommodate safe distance requirements during a pandemic.
11. Increase network bandwidth by 200%.
12. Reconfigured telephone switchboard protocols to accommodate increase in incoming calls.
13. Reconfigured dining room capacity and queues to accommodate safe distance requirements during a pandemic.
14. Developed and executed safe-distance graduation ceremonies.
15. Developed a contact tracing database to efficiently manage case management during a pandemic.
16. Employed a health professional to manage contact tracing responsibilities of the university by Fall 2020.
17. Established and executed NCAA-compliant student athlete testing procedures for COVID-19.
18. Developed and deployed technology, policies, and procedures to accommodate teaching and learning operations and activities during a pandemic.
19. Developed and approved 13 new high-demand, market-driven programs.

# Lander University

Revised September 2021



FY 2020-2021 Agency Accountability Report FY2020-21 Strategic Plan:														
These responses were submitted for the FY 2020-2021 Accountability Report by the LANDER UNIVERSITY														
Goal Selective, Competitive Recruitment and Enrollment of SC Students														
Strategy 1.1										Statewide Enterprise Objective				
Increase total headcount enrollment by 2%										Education, Training, and Human Development				
Measure Number	Description	Base	Target	Actual	Value Type	Desired Outcome	Time Applicable	Calculation Method	Data Source	Data Location	Primary Stakeholder	Stakeholder Need Satisfied	State Funded Program Number Responsible	Notes
1.1.1	Fall total headcount enrollment.	3511	3581	3839	Count	equal to or greater than	State Fiscal Year (July 1 - June 30).	Count of enrolled students.	Internal records	Institutional Research, Banner.	General Public: Students who are high school graduates, veterans, or adults who seek to continue their education or launch their career.	Access and support from a South Carolina regional comprehensive university to obtain an undergraduate or graduate degree.	0	

[illegible]





[illegible]

These responses were submitted for the FY 2020-2021 Accountability Report by the														
LANDER UNIVERSITY														
Goal	Robust student experience													
Strategy	2.4										Statewide Enterprise Objective			
Create donation-stocked food pantry to help students and employees in time of need										Education, Training, and Human Development				
Measure Number	Description	Base	Target	Actual	Value Type	Desired Outcome	Time Applicable	Calculation Method	Data Source	Data Location	Primary Stakeholder	Stakeholder Need Satisfied	State Funded Budget Program Number Responsible	Notes
2.4.1	Create donation-stocked food pantry to help students and employees in time of need	0%	100%	100%	Percent Complete	Complete	State Fiscal Year (July 1 - June 30).	Percent of completion as determined by the agency.	Internal records	Student Affairs	General Public: Students who are high school graduates, veterans, or adults who seek to continue their education or launch their career.	Access and support from a South Carolina regional comprehensive university to obtain an undergraduate or graduate degree.	0	

These responses were submitted for the FY 2020-2021 Accountability Report by the														
LANDER UNIVERSITY														
Goal	Employer of Choice													
Strategy	3.1									Statewide Enterprise Objective				
7. Stabilize employment in time of crisis by avoiding furloughs										Education, Training, and Human Development				
Measure Number	Description	Base	Target	Actual	Value Type	Desired Outcome	Time Applicable	Calculation Method	Data Source	Data Location	Primary Stakeholder	Stakeholder Need Satisfied	State Funded Budget Program Number Responsible	Notes
3.1.1	Days of furlough required. (Base of "0" = No days furlough in FY2020.)	0	0	0	Count	Maintain	State Fiscal Year (July 1 - June 30).	Count of furlough days.	Internal records	N/A	General Public: Students who are high school graduates, veterans, or adults who seek to continue their education or launch their career.	Access and support from a South Carolina regional comprehensive university to obtain an undergraduate or graduate degree.	0	

These responses were submitted for the FY 2020-2021 Accountability Report by the														
LANDER UNIVERSITY														
Goal	Facilities positioned for growth and efficient utilization													
Strategy	4.01									Statewide Enterprise Objective				
Procure sufficient number of personal protection equipment for students, faculty and staff to comply with COVID-related protection measures										Education, Training, and Human Development				
Measure Number	Description	Base	Target	Actual	Value Type	Desired Outcome	Time Applicable	Calculation Method	Data Source	Data Location	Primary Stakeholder	Stakeholder Need Satisfied	State Funded Budget Program Number Responsible	Notes
4.01.1	Procure sufficient number of personal protection equipment for students, faculty and staff to comply with COVID-related protection measures	0%	100%	100%	Percent Complete	Complete	State Fiscal Year (July 1 - June 30).	Percent of completion as determined by the agency.	Internal records	Business Administration	General Public: Students who are high school graduates, veterans, or adults who seek to continue their education or launch their career.	Access and support from a South Carolina regional comprehensive university to obtain an undergraduate or graduate degree.	0	

LANDER UNIVERSITY

[illegible]

These responses were submitted for the FY 2020-2021 Accountability Report by the														
LANDER UNIVERSITY														
Goal	Facilities positioned for growth and efficient utilization													
Strategy	4.3									Statewide Enterprise Objective				
Expand outdoor seating capacity to better accommodate safe distance requirements during a pandemic										Education, Training, and Human Development				
Measure Number	Description	Base	Target	Actual	Value Type	Desired Outcome	Time Applicable	Calculation Method	Data Source	Data Location	Primary Stakeholder	Stakeholder Need Satisfied	State Funded Budget Program Number Responsible	Notes
4.3.1	Expand outdoor seating capacity to better accommodate safe distance requirements during a pandemic	0%	100%	100%	Percent Complete	Complete	State Fiscal Year (July 1 - June 30).	Percent of completion as determined by the agency.	Internal records	Business Administration	General Public: Students who are high school graduates, veterans, or adults who seek to continue their education or launch their career.	Access and support from a South Carolina regional comprehensive university to obtain an undergraduate or graduate degree.	0	
					</									

LANDER UNIVERSITY

[illegible]

Goal	Facilities positioned for growth and efficient utilization
------	------------------------------------------------------------

Goal	Facilities positioned for growth and efficient utilization
------	------------------------------------------------------------

## 4.5

Statewide Enterprise Objective	
1	Improve the efficiency of the state's transportation infrastructure.
2	Enhance the safety of the state's transportation system.
3	Reduce the environmental impact of the state's transportation system.
4	Improve the accessibility of the state's transportation system.
5	Reduce the cost of the state's transportation system.
6	Improve the quality of the state's transportation system.
7	Reduce the congestion on the state's transportation system.
8	Improve the reliability of the state's transportation system.
9	Reduce the carbon footprint of the state's transportation system.
10	Improve the connectivity of the state's transportation system.
11	Reduce the accident rate on the state's transportation system.
12	Improve the maintenance of the state's transportation system.
13	Reduce the travel time on the state's transportation system.
14	Improve the passenger experience on the state's transportation system.
15	Reduce the fuel consumption of the state's transportation system.
16	Improve the security of the state's transportation system.
17	Reduce the noise pollution from the state's transportation system.
18	Improve the public transit system of the state's transportation system.
19	Reduce the infrastructure costs of the state's transportation system.
20	Improve the overall performance of the state's transportation system.

Reconfigure telephone switchboard protocols to accommodate increase in incoming calls
---------------------------------------------------------------------------------------

Education, Training, and Human Development

[illegible]

[illegible]

These responses were submitted for the FY 2020-2021 Accountability Report by the														
LANDER UNIVERSITY														
Goal	Facilities positioned for growth and efficient utilization													
Strategy	4.7										Statewide Enterprise Objective			
Develop and execute safe-distance graduation ceremonies											Education, Training, and Human Development			
Measure Number	Description	Base	Target	Actual	Value Type	Desired Outcome	Time Applicable	Calculation Method	Data Source	Data Location	Primary Stakeholder	Stakeholder Need Satisfied	State Funded Budget Program Number Responsible	Notes
4.7.1	Number of safe-distance graduation ceremonies	1	3	3	Count	equal to or greater than	State Fiscal Year (July 1 - June 30).	Count of safe-distanced ceremonies held.	Internal records	Business Administration	General Public: Students who are high school graduates, veterans, or adults who seek to continue their education or launch their career.	Access and support from a South Carolina regional comprehensive university to obtain an undergraduate or graduate degree.	0	

These responses were submitted for the FY 2020-2021 Accountability Report by the														
LANDER UNIVERSITY														
Goal Facilities positioned for growth and efficient utilization														
Strategy 4.8										Statewide Enterprise Objective				
Develop a contact tracing database to efficiently manage case management during a pandemic										Education, Training, and Human Development				
Measure Number	Description	Base	Target	Actual	Value Type	Desired Outcome	Time Applicable	Calculation Method	Data Source	Data Location	Primary Stakeholder	Stakeholder Need Satisfied	State Funded Budget Program Number Responsible	Notes
4.8.1	Develop a contact tracing database to efficiently manage case management during a pandemic	0%	100%	100%	Percent Complete	Complete	State Fiscal Year (July 1 - June 30).	Percent of completion as determined by the agency.	Internal records	Health Services, MS Access	General Public: Students who are high school graduates, veterans, or adults who seek to continue their education or launch their career.	Access and support from a South Carolina regional comprehensive university to obtain an undergraduate or graduate degree.	0	

## LANDER UNIVERSITY

[illegible]

These responses were submitted for the FY 2020-2021 Accountability Report by the														
LANDER UNIVERSITY														
Goal	Facilities positioned for growth and efficient utilization													
Strategy	4.1										Statewide Enterprise Objective			
Establish and execute NCAA-compliant student athlete testing procedures for COVID-19										Education, Training, and Human Development				
Measure Number	Description	Base	Target	Actual	Value Type	Desired Outcome	Time Applicable	Calculation Method	Data Source	Data Location	Primary Stakeholder	Stakeholder Need Satisfied	State Funded Budget Program Number Responsible	Notes
4.1.1	Establish and execute NCAA-compliant student athlete testing procedures for COVID-19	0%	100%	100%	Percent Complete	Complete	State Fiscal Year (July 1 - June 30).	Percent of completion as determined by the agency.	Internal records	Athletics	General Public: Students who are high school graduates, veterans, or adults who seek to continue their education or launch their career.	Access and support from a South Carolina regional comprehensive university to obtain an undergraduate or graduate degree.	0	

[illegible]



FY 2020-2021 Agency Accountability Report  
FY2021-22 Strategic Plan:

These responses were submitted for the FY 2020-2021 Accountability Report by the  
LANDER UNIVERSITY

Goal Selective, Competitive Recruitment and Enrollment of SC Students														
Strategy 1.1										Statewide Enterprise Objective				
Increase the number of students enrolled in programs that are 100% online.										Education, Training, and Human Development				
Measure Number	Description	Base	Target	Actual	Value Type	Desired Outcome	Time Applicable	Calculation Method	Data Source	Data Location	Primary Stakeholder	Stakeholder Need Satisfied	State Funded Program Number Responsible	Notes
1.1.1	By Fall 2022, increase the number of students enrolled in programs that are 100% online by 50 students.	163	213		Count (whole number)	equal to or greater than	State Fiscal Year (July 1 - June 30).		0 Internal records	Banner ERP (Institutional Research)	General Public: Students who are high school graduates, veterans, or adults who seek to continue their education or launch their career.	Access and support from a South Carolina regional comprehensive university to obtain an undergraduate or graduate degree.	N/A	

These responses were submitted for the FY 2020-2021 Accountability Report by the														
LANDER UNIVERSITY														
Goal Selective, Competitive Recruitment and Enrollment of SC Students														
Strategy 1.2										Statewide Enterprise Objective				
Increase the total enrollment of undergraduate and graduate students.										Education, Training, and Human Development				
Measure Number	Description	Base	Target	Actual	Value Type	Desired Outcome	Time Applicable	Calculation Method	Data Source	Data Location	Primary Stakeholder	Stakeholder Need Satisfied	State Funded Program Number Responsible	Notes
1.2.1	By Fall 2022, increase total headcount of undergraduate and graduate students by 3% (115).	3840	3955		Count (whole number)	equal to or greater than	State Fiscal Year (July 1 - June 30).		0 Internal records	Banner ERP (Institutional Research)	General Public: Students who are high school graduates, veterans, or adults who seek to continue their education or launch their career.	Access and support from a South Carolina regional comprehensive university to obtain an undergraduate or graduate degree.	N/A	

These responses were submitted for the FY 2020-2021 Accountability Report by the LANDER UNIVERSITY														
Goal	Robust student experience													
Strategy	2.1									Statewide Enterprise Objective				
Continue to introduce new food venues to campus.										Education, Training, and Human Development				
Measure Number	Description	Base	Target	Actual	Value Type	Desired Outcome	Time Applicable	Calculation Method	Data Source	Data Location	Primary Stakeholder	Stakeholder Need Satisfied	State Funded Program Number Responsible	Notes
2.1.1	By June 30, 2022, introduce at least one new food venue to campus	0%	100%		Percent Complete	complete	State Fiscal Year (July 1 - June 30).	0	Internal records	Business Administration, Dining Services	General Public: Students who are high school graduates, veterans, or adults who seek to continue their education or launch their career.	Access and support from a South Carolina regional comprehensive university to obtain an undergraduate or graduate degree.	N/A	

These responses were submitted for the FY 2020-2021 Accountability Report by the														
LANDER UNIVERSITY														
Goal	Employer of Choice													
Strategy	3.1									Statewide Enterprise Objective				
Continue to increase employee compensation.										Education, Training, and Human Development				
Measure Number	Description	Base	Target	Actual	Value Type	Desired Outcome	Time Applicable	Calculation Method	Data Source	Data Location	Primary Stakeholder	Stakeholder Need Satisfied	State Funded Program Number Responsible	Notes
3.1.1	By June 30, 2022, increase employee compensation by at least 1.5%.	0%	100%		Percent	equal to or greater than	State Fiscal Year (July 1 - June 30).	0	Internal records	Business Administration	General Public: Students who are high school graduates, veterans, or adults who seek to continue their education or launch their career.	Access and support from a South Carolina regional comprehensive university to obtain an undergraduate or graduate degree.	N/A	

These responses were submitted for the FY 2020-2021 Accountability Report by the														
LANDER UNIVERSITY														
Goal Facilities positioned for growth and efficient utilization														
Strategy 4.1										Statewide Enterprise Objective				
Increase support for faculty to develop the teaching and course management skills required to excel in all modes of instruction, including online, hybrid, and in-person courses.										Education, Training, and Human Development				
Measure Number	Description	Base	Target	Actual	Value Type	Desired Outcome	Time Applicable	Calculation Method	Data Source	Data Location	Primary Stakeholder	Stakeholder Need Satisfied	State Funded Program Number Responsible	Notes
4.1.1	By June 30, 2022, recruit one full-time professional faculty member to provide training and support for faculty in all modes of instruction.	0%	100%		Percent Complete	complete	State Fiscal Year (July 1 - June 30).		0 Internal records	Academic Affairs	General Public: Students who are high school graduates, veterans, or adults who seek to continue their education or launch their career.	Access and support from a South Carolina regional comprehensive university to obtain an undergraduate or graduate degree.	N/A	









FY 2020-2021 Agency Accountability Report  
Budget Responses:

These responses were submitted for the FY 2020-2021 Accountability Report by the  
LANDER UNIVERSITY

			FY 2020-21 Expenditures (Actual)				FY 2021-22 Expenditures (Projected)			
State Funded Program Number	State Funded Program Title	Description of State Funded Program	General	Other	Federal	TOTAL	General	Other	Federal	TOTAL
4500.010000.000	Education & General	Supports the financial stability of the university by funding all instruction, academic support, student services, athletics, institutional support, and operation and maintenance of plant.	\$7,618,024.00	\$57,303,653.00	\$3,302,415.00	\$68,224,092.00	\$9,037,614.00	\$58,622,883.00	\$202,864.00	\$67,863,361.00
6000.000000.000	Auxiliary Enterprises	These functions charge for their services and are 100% self-supporting. They include Housing, Bookstore, and Dining Services.		\$16,799,557.00		\$16,799,557.00		\$19,608,010.00		\$19,608,010.00
9500.050000.000	State Employer Contributions	Employee benefits are the employer's share of related FICA, retirement, unemployment insurance, workers compensation, health and dental insurance for all employees.	\$2,362,029.00	\$8,828,297.00	\$55,964.00	\$11,246,290.00	\$2,438,765.00	\$10,766,514.00	\$64,229.00	\$13,269,508.00

Legal Responses:

These responses were submitted for the FY 2020-2021 Accountability Report by the  
LANDER UNIVERSITY

Description	Purpose	Law Number	Jurisdiction	Type	Notes
Lander University is designated as a public, higher education institution in South Carolina	Not related to agency deliverable	Title 59, Chapter 101, Section 10	State	Statute	
Lander University answers to the South Carolina General Assembly through the South Carolina Commission on Higher Education (CHE), which possesses regulatory control over South Carolina public colleges and universities such that "No new program may be undertaken by any public institution of higher education without approval of the Commission."	Requires a service	Title 59, Chapter 103, Section 35	State	Statute	Degrees.
The Lander Board of Trustees is constituted a body corporate and politic and is authorized to "confer degrees upon students and other persons as the board considers qualified"	Requires a service	Title 59, Chapter 135, Section 30(9)	State	Statute	Degrees.

FY 2020-2021 Agency Accountability Report  
Services Responses:

These responses were submitted for the FY 2020-2021 Accountability Report by the  
LANDER UNIVERSITY

Description of Service	Description of Direct Customer	Customer Name	Others Impacted By the Service	Agency unit providing the service	Description of agency unit	Primary negative impact if service not provided
With more than 60 areas of study, Lander offers incoming students degree opportunities to meet career and personal goals.	Public: High school graduates, veterans, adults looking for a second career.	General Public	Public: High school graduates, veterans, adults looking for a second career.	Lander University	Lander University is a community where learning, energy and creativity flourish. Established over 146 years ago, Lander’s tradition of academic excellence is exemplified in its liberal arts and science programs, as well as professional programs in business, education, and nursing.	Loss of opportunity for South Carolina citizens in the region to advance their education, launch their careers, and continue to develop professionally within the state.

Agency Partnerships Responses:

These responses were submitted for the FY 2020-2021 Accountability Report by the

LANDER UNIVERSITY

Name of Partner Entity	Type of Partner Entity	Description of Partnership
Education clinical space partners	K-12 Education Institute	Provides Lander University teacher education students with clinical learning space and experience.
Healthcare clinical space partners	Non-Governmental Organization	Provides Lander University nursing students with clinical learning space and experience.
Lander University Board of Trustees	Non-Governmental Organization	Provides oversight of university operations, policies, long-range planning and public accountability
South Carolina Legislature	State Government	Provides state appropriations to fund educational initiatives
Community and Elected Officials	Local Government	Provides legislative support and opportunities for internships and service learning.
Alumni	Individual	Provides financial support, institutional support, and student internship opportunities.
Donors	Individual	Provides scholarship and institutional support to the university.
Employers	Private Business Organization	Provides careers for graduates and shares labor market information that helps to shape high-demand, market-driven academic programs at the university.
South Carolina Technical Schools	Higher Education Institute	Various articulation agreements and MOUs for transfer students.
Clemson University	Higher Education Institute	Chemistry-Engineering Dual Degree Partner.
Clemson University	Higher Education Institute	Mathematics/CIS-Engineering Dual Degree Partner.
High Schools	K-12 Education Institute	Provides Lander college-ready high school students for dual-enrollment course offerings.
Education clinical space partners	K-12 Education Institute	Provides Lander University teacher education students with clinical learning space and experience.
Healthcare clinical space partners	Non-Governmental Organization	Provides Lander University nursing students with clinical learning space and experience.
Education clinical space partners	K-12 Education Institute	Provides Lander University teacher education students with clinical learning space and experience.
Healthcare clinical space partners	Non-Governmental Organization	Provides Lander University nursing students with clinical learning space and experience.

**FY 2020-2021 Agency Accountability Report  
Reports Responses:**

**These responses were submitted for the FY 2020-2021 Accountability Report by the  
LANDER UNIVERSITY**

Report Name	Law Number (If required)	Summary of Information Requested in the Report	Most Recent Submission Date	Reporting Frequency	Type of Entity	Method to Access the Report	Direct access hyperlink or agency contact
Annual Report of Abatements	Section 59-112-70(A-C) and Section 59-101-620	By November first of each year, state supported institutions of higher learning must submit to the Commission on Higher Education the total number of out-of-state undergraduate students during the prior fiscal year that received abatement of rates pursuant to Section 59-112-70 of the 1976 Code as well as the total dollar amount of the abatements received.	11/1/2020	Annually	South Carolina state agency or agencies	Available on agency's website	South Carolina Commission on Higher Education <a href="https://www.che.sc.gov/">https://www.che.sc.gov/</a>
Faculty Report		Report demographic data on full and part-time faculty including salary, tenure status, contract length, etc.	12/2/2020	Annually	South Carolina state agency or agencies	Hard copy available upon request	Mac Kirkpatrick, Director of Institutional Research, Lander University
Fall Semester Course Report		Report course data by semester including subject taught, credit hours per course, starting and ending time and date, method of instruction, etc.	10/30/2020	Annually	South Carolina state agency or agencies	Hard copy available upon request	Mac Kirkpatrick, Director of Institutional Research, Lander University
Fall Semester Enrollment Report		Report enrollment by semester including demographic information such as gender, ethnicity, residency, gpa, high school data, etc.	10/30/2020	Annually	South Carolina state agency or agencies	Hard copy available upon request	Mac Kirkpatrick, Director of Institutional Research, Lander University
Fall Semester Scholarship Report		Report students by semester receiving state and federal grants and scholarships including PELL, SC LIFE, SC HOPE, demographic data, etc.	10/30/2020	Annually	South Carolina state agency or agencies	Hard copy available upon request	Mac Kirkpatrick, Director of Institutional Research, Lander University
IPEDS 12 - Month Enrollment Survey		The 12-Month Enrollment component collects unduplicated student enrollment counts and instructional activity data for an entire 12 -month period.	10/14/2020	Annually	Entity within federal government	Hard copy available upon request	Mac Kirkpatrick, Director of Institutional Research, Lander University
IPEDS Academic Libraries Survey		The purpose of the Academic Libraries survey is to collect information on library collections, library expenses, and library services for libraries in degree-granting postsecondary institutions.	4/7/2021	Annually	Entity within federal government	Hard copy available upon request	Mac Kirkpatrick, Director of Institutional Research, Lander University
IPEDS Admissions Survey		The primary purpose of admissions survey is to collect basic information about the undergraduate selection process for entering first-time, degree/certificate-seeking students. This includes information about admissions considerations, admissions yields, and SAT and ACT test scores (if test scores are required for admission).	2/10/2021	Annually	Entity within federal government	Hard copy available upon request	Mac Kirkpatrick, Director of Institutional Research, Lander University

**These responses were submitted for the FY 2020-2021 Accountability Report by the  
LANDER UNIVERSITY**

Report Name	Law Number (If required)	Summary of Information Requested in the Report	Most Recent Submission Date	Reporting Frequency	Type of Entity	Method to Access the Report	Direct access hyperlink or agency contact
IPEDS Completions Survey		This survey collects the number of degrees and certificates awarded by field of study, level of award, race/ethnicity, and gender. The reporting period for the Completions component is during the 12-month time period beginning July 1 of the previous calendar year and ending June 30 of the current calendar year.	10/14/2020	Annually	Entity within federal government	Hard copy available upon request	Mac Kirkpatrick, Director of Institutional Research, Lander University
IPEDS Enrollment Survey		The Fall Enrollment component collects student enrollment counts by level of student, enrollment status, gender and race/ethnicity. In addition, first-time student retention rates and the student-to-faculty ratio are collected.	4/7/2021	Annually	Entity within federal government	Hard copy available upon request	Mac Kirkpatrick, Director of Institutional Research, Lander University
IPEDS Finance Survey		The purpose of the IPEDS Finance component is to collect basic financial information from items associated with the institution's General Purpose Financial Statements using GASB (Governmental Accounting Standards Board) standards.	4/7/2021	Annually	Entity within federal government	Hard copy available upon request	Mac Kirkpatrick, Director of Institutional Research, Lander University
IPEDS Financial Aid Survey		The purpose of the Student Financial Aid survey is to collect information about financial aid provided to various groups of undergraduate students and military/veteran educational benefits for all students at the institution.	2/10/2021	Annually	Entity within federal government	Hard copy available upon request	Mac Kirkpatrick, Director of Institutional Research, Lander University
IPEDS Graduation Rate 200% Survey		The Graduation Rate 200 component is a further extension of the traditional Graduation Rates (GR) component which carries forward 100% and 150% graduation rates data previously reported in the GR component and requests information on any additional completers and exclusions from the cohort between 151% and 200% of normal time for students to complete all requirements of their program of study.	2/10/2021	Annually	Entity within federal government	Hard copy available upon request	Mac Kirkpatrick, Director of Institutional Research, Lander University
IPEDS Graduation Rate Survey		The Graduation Rate component collects data on the cohort of full-time, first-time degree/certificate-seeking undergraduate students and tracks their completion status at 150% of the normal time to complete all requirements of their program of study.	2/10/2021	Annually	Entity within federal government	Hard copy available upon request	Mac Kirkpatrick, Director of Institutional Research, Lander University

**These responses were submitted for the FY 2020-2021 Accountability Report by the  
LANDER UNIVERSITY**

Report Name	Law Number (If required)	Summary of Information Requested in the Report	Most Recent Submission Date	Reporting Frequency	Type of Entity	Method to Access the Report	Direct access hyperlink or agency contact
IPEDS Human Resources Survey		The HR component collects important information about the staff of the institution including faculty (instructional staff) and non-instructional staff by occupational category.	4/7/2021	Annually	Entity within federal government	Hard copy available upon request	Mac Kirkpatrick, Director of Institutional Research, Lander University
IPEDS Institutional Characteristics Survey		Report data on institution including student services, veterans services, tuition and fees, price of attendance, etc.	10/14/2020	Annually	Entity within federal government	Hard copy available upon request	Mac Kirkpatrick, Director of Institutional Research, Lander University
IPEDS Outcome Measures Survey		The Outcome Measures survey collects award and enrollment data from degree-granting institutions on four undergraduate cohorts at two points in time: six-year and eight-year for four cohorts of degree-seeking undergraduates. The four cohorts are: Full-time, first-time; Part-time, first-time; Full-time, non-first-time; Part-time, non-first-time.	2/10/2021	Annually	Entity within federal government	Hard copy available upon request	Mac Kirkpatrick, Director of Institutional Research, Lander University
NC - SARA Annual Enrollment Report		Annually report to the National Council for State Authorization Reciprocity Agreements the number of students enrolled in the institution via distance education delivered outside the home state of the institution, disaggregated by state, territory, or district in which the students reside.	6/15/2021	Annually	Other	Hard copy available upon request	The National Council for State Authorization Reciprocity Agreements (NC-SARA) <a href="https://www.nc-sara.org/">https://www.nc-sara.org/</a>
NCAA Graduation Success Rates/Academic Success Report		Data for graduation rates, enrollment, Graduation Success Rates and Academic Success Rates is collected.	6/1/2020	Annually	Other	Hard copy available upon request	Mac Kirkpatrick, Director of Institutional Research, Lander University
Program Completers		Report the program students graduated in the last academic year including program name, program code, degree type, semester of graduation, demographic data, etc.	9/30/2020	Annually	South Carolina state agency or agencies	Hard copy available upon request	Mac Kirkpatrick, Director of Institutional Research, Lander University
Report on Admission Standards for First-Time Entering Freshmen		Collects data on first-time freshmen applicants, including SAT scores, high school rank, high school gpa, etc.	12/18/2020	Annually	South Carolina state agency or agencies	Hard copy available upon request	Mac Kirkpatrick, Director of Institutional Research, Lander University
Southern Association of Colleges and Schools Commission on Colleges Institutional Profile Report		This report gathers: General Information, Institutional Personnel Information, Enrollment Information, and Graduation Rate data.	1/15/2021	Annually	Other	Hard copy available upon request	Mac Kirkpatrick, Director of Institutional Research, Lander University
Spring Semester Course Report		Report course data by semester including subject taught, credit hours per course, starting and ending time and date, method of instruction, etc.	3/30/2020	Annually	South Carolina state agency or agencies	Hard copy available upon request	Mac Kirkpatrick, Director of Institutional Research, Lander University
Spring Semester Enrollment Report		Report enrollment by semester including demographic information such as gender, ethnicity, residency, gpa, high school data, etc.	3/30/2020	Annually	South Carolina state agency or agencies	Hard copy available upon request	Mac Kirkpatrick, Director of Institutional Research, Lander University

These responses were submitted for the FY 2020-2021 Accountability Report by the  
LANDER UNIVERSITY

Report Name	Law Number (If required)	Summary of Information Requested in the Report	Most Recent Submission Date	Reporting Frequency	Type of Entity	Method to Access the Report	Direct access hyperlink or agency contact
Spring Semester Scholarship Report		Report students by semester receiving state and federal grants and scholarships including PELL, SC LIFE, SC HOPE, demographic data, etc.	3/30/2020	Annually	South Carolina state agency or agencies	Hard copy available upon request	Mac Kirkpatrick, Director of Institutional Research, Lander University
Summer Semester Course Report		Report course data by semester including subject taught, credit hours per course, starting and ending time and date, method of instruction, etc.	8/15/2021	Annually	South Carolina state agency or agencies	Hard copy available upon request	Mac Kirkpatrick, Director of Institutional Research, Lander University
Summer Semester Enrollment Report		Report enrollment by semester including demographic information such as gender, ethnicity, residency, gpa, high school data, etc.	8/15/2021	Annually	South Carolina state agency or agencies	Hard copy available upon request	Mac Kirkpatrick, Director of Institutional Research, Lander University