

AGENCY NAME:	SOUTH CAROLINA STATE UNIVERSITY		
AGENCY CODE:	H240	SECTION:	019

Fiscal Year 2020–2021 Accountability Report

SUBMISSION FORM

I have reviewed and approved the data submitted by the agency in the following online forms:

- Reorganization and Compliance
- Strategic Plan Results
- Strategic Plan Development
- Legal
- Services
- Partnerships
- Report or Review

I have reviewed and approved the financial report summarizing the agency's budget and actual expenditures, as entered by the agency into the South Carolina Enterprise Information System.

The information submitted is complete and accurate to the extent of my knowledge.

AGENCY DIRECTOR (SIGN AND DATE):	Signature on file.
(TYPE/PRINT NAME):	Mr. Alexander Conyers, Interim President

BOARD/CMSN CHAIR (SIGN AND DATE):	Signature on file.
(TYPE/PRINT NAME):	Mr. Rodney C. Jenkins, Chairman Board of Trustees

FY 2020-2021 Agency Accountability Report
Reorganization and Compliance Responses:

These responses were submitted for the FY 2020-2021 Accountability Report by the

SOUTH CAROLINA STATE UNIVERSITY

Primary Contact:

First Name	Last Name	Role/Title	Phone	Email Address
Betty	Boatwright	Special Assistant to President	803-928-6842	bboatwright@scsu.edu

Secondary Contact

First Name	Last Name	Role/Title	Phone	Email Address
Donna	Hanton	Director of Budgeting and Grant Accounting	803-533-3647	djordan2@scsu.edu

Agency Mission

South Carolina State University (SC State) is a historically Black public 1890 land grant senior comprehensive institution. Located in Orangeburg, South Carolina, SC State University is committed to providing affordable and accessible quality baccalaureate programs in the areas of business, applied professional sciences, mathematics, natural sciences, engineering, engineering technology, education, arts, and humanities. A number of programs are offered at the master's level in teaching, human services and agribusiness, and the educational specialist and doctorate programs are offered in educational administration. SC State University prepares highly skilled, competent and socially aware graduates to enable them to work and live productively in a dynamic, global society. Through technology and traditional methods of teaching and learning, research and service, the University enhances the quality of life of citizens and contributes to the economic development of the state and nation. (This mission statement was approved by the S.C. State University Board of Trustees on October 9, 2018, and by the South Carolina Commission on Higher Education on October 23, 2018.)

Adopted in: 2018

Agency Vision

SC State will excel as a comprehensive university offering collaborative educational and research experiences designed to transform the lives of students, families and communities, preparing them to meet the social, technological and economic challenges of the future.

Adopted in: 2018

Recommendations for reorganization requiring legislative change.

No

Please list significant events related to the agency that occurred in FY 2020-2021.

Month Started	Month Ended	Description of Event	Agency Measures Impacted	Other Impacts

Does the agency intend to make any other major reorganization to divisions, departments, or programs to allow the agency to operate more effectively and efficiently in FY 2021-22?

Note: It is not recommended that agencies plan major reorganization projects every year. This section should remain blank unless there is a need for reorganization.

Yes

College of Agriculture - Division of Academic Affairs

Is the agency in compliance with S.C. Code Ann. § 2-1-220, which requires submission of certain reports to the Legislative Services Agency for publication online and the State Library? See also S.C. Code Ann. § 60-2-20.

Yes

If not, please explain why.

These responses were submitted for the FY 2020-2021 Accountability Report by the

SOUTH CAROLINA STATE UNIVERSITY

Is the agency in compliance with various requirements to transfer its records, including electronic ones, to the Department of Archives and History? See the Public Records Act (S.C. Code Ann. § 20-1-10 through 20-1-180) and the South Carolina Uniform Electronic Transactions Act (S.C. Code Ann. § 26-6-10 through 26-10-210).

Yes

Does the law allow the agency to promulgate regulations?

No

AGENCY NAME:	South Carolina State University		
AGENCY CODE:	H240	SECTION:	19

AGENCY’S DISCUSSION AND ANALYSIS

South Carolina State University (SC State), the state’s only public Historically Black College and University (HBCU), celebrated its Quasquicentennial – 125 years of educational excellence. This milestone year marked 125 years of providing access, opportunity and outreach to the citizens of the State of South Carolina and beyond. Throughout the years, the University has produced thousands of graduates who have made major contributions in numerous of fields including Education, Science, Engineering, Speech Pathology & Audiology, Law and Business.

During Fiscal Year 2021, we continued to operate with modifications, brought on by COVID-19. The institution assessed the appropriate health and safety protocols, financial resources, academic program offerings, and triggers that ultimately impacted the operations of the institution. The University sustained its operations while moving from a “closed” to “hybrid” status. The University successfully transitioned faculty, staff and students to the campus.

We continued to ensure that the University’s goals were aligned with the strategic plan, adjusting as necessary to further accommodate the pandemic. An enrollment Management Plan was completed for Fall 2020 to address enrollment affected by COVID-19. The plan included enrollment benchmarks and innovative ideas and processes to increase enrollment and retention. The University also opened its new 1890 Administrative and Community facility on campus; received \$2 million in Learning and technology resources from IBM; received \$300,000 in scholarship support; and received \$2.1M from Retired Army Officer Lamar Powell for support of SC State’s Student Success and Retention Center, a setting for academic assistance and other support, including a Veterans Support Center.

As a part of our Transformation Through Collaboration efforts, the University continued to partner with various business entities which supported internships, program expansion, and technology. These companies included IBM, Dominion Energy, Longenecker & Associates, Samsung, and Savannah River Nuclear Solutions. A Bachelor of Science degree in Mechatronics Engineering was approved by CHE and an MBA Curriculum modification & Applied Oncology Honors Sciences Concentration (BS in Biology) was approved by the Advisory Committee on Academic Programs (ACAP/CHE).

In November 2020, the Nuclear Engineering program received \$150,000 from Duke Energy to provide scholarships to Nuclear Engineering students. The first recipients of the Duke Nuclear Engineer Scholarship will be in Fall 2021.

In January 2021, Samsung provided \$150,000 for Gap funding scholarships to STEM majors. A total of 17 senior STEM majors received scholarship funding to complete their degrees in May 2021. Additional scholarship funds will be awarded to qualified seniors in Fall 2021 and May 2022.

Renovations were made to The Washington Dining Hall and The Pitt student dining facilities; and new turf was placed at the Oliver C. Dawson Bulldog Stadium. The University had its SACSCOC Virtual On-

AGENCY NAME:	South Carolina State University		
AGENCY CODE:	H240	SECTION:	19

Site Visit in September 2020 as part of its decennial reaffirmation review. The results of the reaffirmation will be announced at the SACSCOC Annual meeting in December 2021.

The 2020-21 Accountability Report provides an overview of the University's performance and achievements as they relate to meeting its institutional goals and complying with state and federal regulations. Listed below are the University's strategic initiatives, goals, measures, and summary of the results.

The University supports the Statewide Enterprise Strategic Objective, Education, Training and Human Development, by preparing students for educational opportunities that lead to, professional careers that transform underrepresented communities.

The following Strategic Initiatives and goals from the University 2018-2022 Strategic plan were measured:

Strategic Initiative 1: Ensure Fiscal Stability

Goal 1: Develop a financial budget model and balance budgets that align resources with strategic goals.
Goal 2; Maintain a positive net position to ensure adequate cash flows and increase debt flows.

During the 2020-21 Fiscal Year, the University's budget was aligned with its strategic initiatives and goals. State budget presentations were submitted on time and quarterly financial reports were submitted to the Board of Trustees. The impact of COVID on the FY20-21 budget was offset by the receipt of funds from the CARES Act. A continuous review of departmental budgets is managed closely by the budget office staff along with the appropriate university cabinet member. The adherence to the approved budget is reflected in the position change in net position.

Strategic Initiative 2: Enhance Student Enrollment and Success

Goal 1: Diversify and Increase Student Enrollment
Goal 2: Increase Overall Retention Rate
Goal 3: Increase the number of offered student internships and placement in jobs, graduate and professional schools

Student Enrollment and Retention is still an issue that is being addressed by the University. Scholarship funding is needed to enroll and retain students. The overall enrollment of new transfer students and retention of current students targeted goals for this period, were not achieved. The recruitment and admission pool revealed more than 500 transfer students applied to enroll and 50% are admitted. However, only 116 students enrolled. The students did not enroll due to the impact of COVID and lack of finances.

The University also implemented a Bulldog Cares program designed to re-enroll students that stopped out of the University.

The University currently has a 71% retention rate for its students; the target goal of 73% for this reporting period was not achieved. The University implemented in Fall 2020, as part of the SACSCOC

AGENCY NAME:	South Carolina State University		
AGENCY CODE:	H240	SECTION:	19

reaffirmation process, a Quality Enhancement Plan (QEP) designed to focus on student success by improving retention rates. The title of the QEP is MESA: *Making Education Student-Focused & Achievable*. The program focus is on student success and specifically, on improving retention rates. “Mesa’ is the Spanish word for table. The motto, “Setting the Table for Student Success” encourages students, faculty, and staff to participate in the success of students and in the success of the University. The program includes infusing active learning strategies in general education courses, revamping the University 101 course to frontload student study skills and providing early intervention for a risk student.

The University has implemented a 24/7 Online tutoring service, Smartthinking, to allow students to receive tutoring in a variety of areas from the convenience of homes and during times they are available.

Strategic Initiative 3: Transform the Curriculum and Research Programs

Goal 2: Increase the number of programs delivered via distance and online education.

The University’s Center for Online and Distance Education ensured that all courses for Fall 2020 and Spring 2021 were offered and delivered remotely due to COVID. There are four programs offered online: Health Care Management (MBA), Educational Specialist (EdS) Educational Administration (EdD) and Public Administration (BA).

Risk Assessment and Mitigation Strategies

A major risk associated with South Carolina State is a downturn in enrollment. Over 80% of our students come from SC Families that are African American and are Pell eligible and these are the very families that have been most impacted by COVID-19.

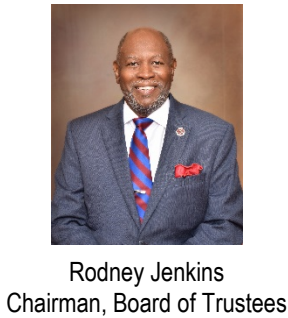
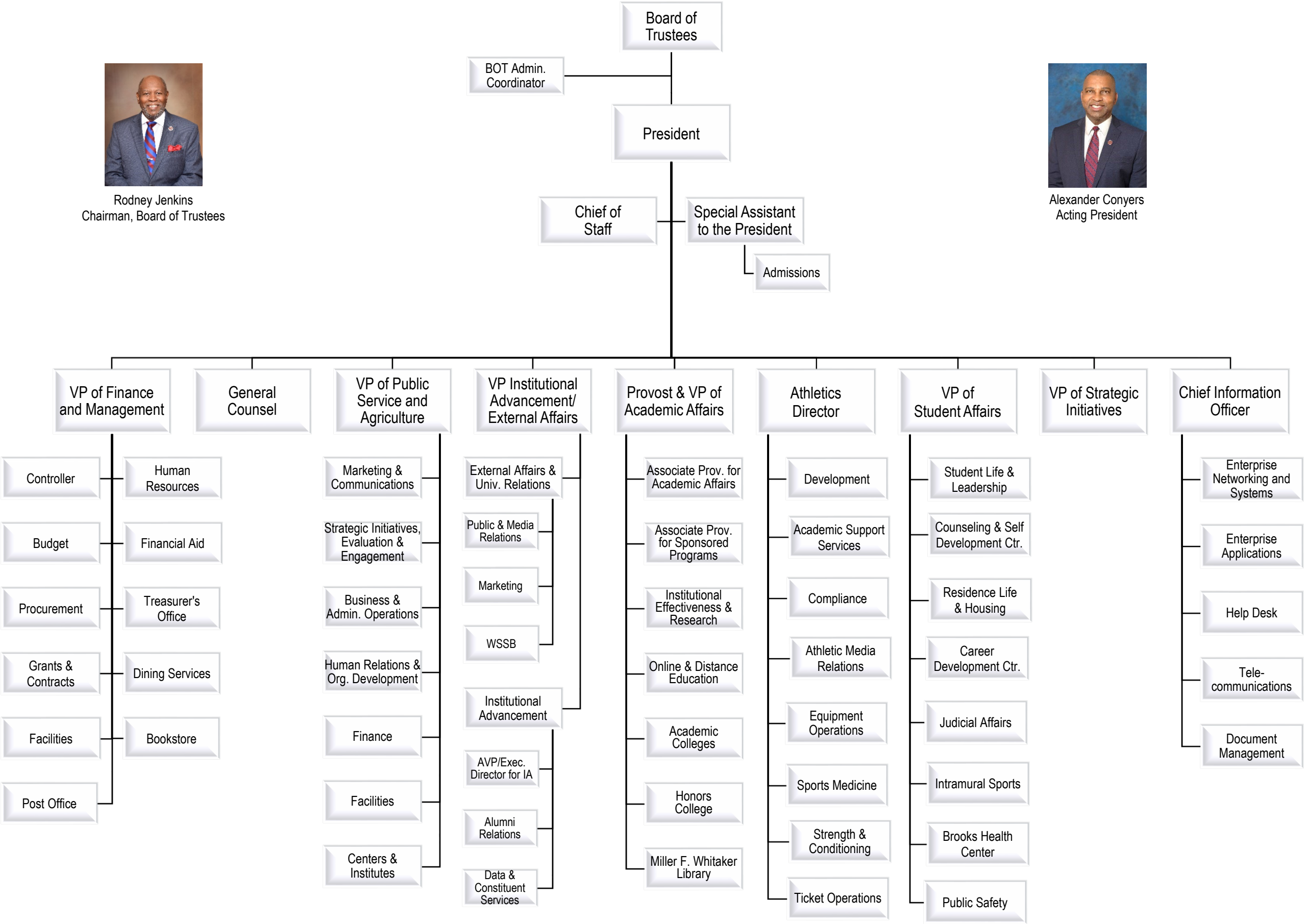
Subsequently, as larger institutions with greater financial assets are motivated to target minority students in South Carolina for greater diversity, these same students will understandably tend to “follow the money” in these difficult financial times.

To offset this, SC State has requested specific funds that will allow it to match the offerings of those institutions that provide the additional financial assistance to our targeted students. As a result, the University would be able to compete on the quality of our course offerings and the overall campus educational experience. To ensure that the University continues to provide access and opportunity to students, SC State has put in place the following mitigating strategies: better controls, operational efficiency and effectiveness, improved processes and procedures, and full transparency.



South Carolina State University Organizational Chart

(Approved by the Board of Trustees on June 29, 2021)



FY 2020-2021 Agency Accountability Report
FY2020-21 Strategic Plan:

These responses were submitted for the FY 2020-2021 Accountability Report by the
SOUTH CAROLINA STATE UNIVERSITY

Goal Develop a financial budget model and balance budgets that align resources with strategic goals.														
Strategy 1.1										Statewide Enterprise Objective				
Maintain a balanced budget with a positive forecast										Education, Training, and Human Development				
Measure Number	Description	Base	Target	Actual	Value Type	Desired Outcome	Time Applicable	Calculation Method	Data Source	Data Location	Primary Stakeholder	Stakeholder Need Satisfied	State Funded Program Number Responsible	Notes
1.1.1	Approved budget forecast for a positive change in net position	\$131,127.00	\$65,564.00	\$64,649,367.00	Dollar Amount	Maintain	State Fiscal Year (July 1 - June 30).	Actual budget compared to previous year	Audit Report	Finance Office	Ensure accountability of funds	Use of funding to improve efficiency	0	
1.1.2	Year end actuals reflect a positive change in net position-exclusive of GASB impact	\$12,661,296.00	\$14,827,749.00	\$14,827,749.00	Dollar Amount	equal to or greater than	State Fiscal Year (July 1 - June 30).	Actual budget compared to previous year	Audit Report	Finance Office	Ensure accountability of funds	Use of funding to improve efficiency	0	

These responses were submitted for the FY 2020-2021 Accountability Report by the														
SOUTH CAROLINA STATE UNIVERSITY														
Goal Diversify and increase student enrollment to 3500 by 2022														
Strategy 2.1										Statewide Enterprise Objective				
Diversity and Increase new undergraduate student enrollment										Education, Training, and Human Development				
Measure Number	Description	Base	Target	Actual	Value Type	Desired Outcome	Time Applicable	Calculation Method	Data Source	Data Location	Primary Stakeholder	Stakeholder Need Satisfied	State Funded Program Number Responsible	Notes
2.1.1	Increase the number of transfer students by 20%	168	200	116	Count	equal to or greater than	State Fiscal Year (July 1 - June 30).	Total number of Transfer students enrolled	Admission file	Admissions	Provide pathway for educating SC Citizens	Increase number of diverse students with access to education from the State	0	
2.1.2	Increase the number of transfer students from SC Technical Colleges by 10%	97	108	50	Count	equal to or greater than	State Fiscal Year (July 1 - June 30).	Total number of SC Technical College Transfer students enrolled	Admission file	Admissions	Provide pathway for educating SC Citizens	Increase number of diverse students with access to education from the State	0	

These responses were submitted for the FY 2020-2021 Accountability Report by the														
SOUTH CAROLINA STATE UNIVERSITY														
Goal Increase overall retention rate from 72% to 82% by 2022														
Strategy 3.1										Statewide Enterprise Objective				
Increase undergraduate retention rate										Education, Training, and Human Development				
Measure Number	Description	Base	Target	Actual	Value Type	Desired Outcome	Time Applicable	Calculation Method	Data Source	Data Location	Primary Stakeholder	Stakeholder Need Satisfied	State Funded Program Number Responsible	Notes
3.1.1	Increase the fall to spring retention rate by 2 points	87	89	0.806	Count	equal to or greater than	State Fiscal Year (July 1 - June 30).	Percent of students retained	Retention file	Institutional Research Office	Provide educated citizenry	Improve graduation of students	0	
3.1.2	Increase the fall to fall retention rate by 2 points	71	73	72	Count	equal to or greater than	State Fiscal Year (July 1 - June 30).	Percent of students retained	Retention file	Institutional Research Office	Provide educated citizenry	Improve graduation of students	0	

These responses were submitted for the FY 2020-2021 Accountability Report by the														
SOUTH CAROLINA STATE UNIVERSITY														
Goal Increase the Number of Student Internships and Placement by 50%														
Strategy 4.1										Statewide Enterprise Objective				
Offer seminars to prepare graduates for graduate school										Education, Training, and Human Development				
Measure Number	Description	Base	Target	Actual	Value Type	Desired Outcome	Time Applicable	Calculation Method	Data Source	Data Location	Primary Stakeholder	Stakeholder Need Satisfied	State Funded Program Number Responsible	Notes
4.1.1	Increase the number of student attending seminar annually for graduate school placement	64	100	54	Count	equal to or greater than	State Fiscal Year (July 1 - June 30).	Total number of students reported by College	Internal Records- Internal Assessment Reports for Colleges	Provost Office	Provide pathway for educating SC Citizens for workforce	Improve graduation of students	0	
4.1.2	Increase the number of accelerated 3+2 with research institutions by one annually	3	4	1	Count	equal to or greater than	State Fiscal Year (July 1 - June 30).	Total number approved - Report submitted annually	Internal Records - MOUs	Provost Office	Provide career and educational programs to meet workforce needs	Work with research university to provide master and doctoral level education for students	0	

These responses were submitted for the FY 2020-2021 Accountability Report by the														
SOUTH CAROLINA STATE UNIVERSITY														
Goal Increase the number of Programs delivered via distance and online education														
Strategy 5.1										Statewide Enterprise Objective				
Develop a timeline to implement online programs and certification										Education, Training, and Human Development				
Measure Number	Description	Base	Target	Actual	Value Type	Desired Outcome	Time Applicable	Calculation Method	Data Source	Data Location	Primary Stakeholder	Stakeholder Need Satisfied	State Funded Program Number Responsible	Notes
5.1.1	Implement one program per year	2	1	1	Count	equal to or greater than	State Fiscal Year (July 1 - June 30).	Total number approved - Report submitted annually	Internal Records-	Provost Office	Provide career and educational programs to meet workforce needs	Increase type of programs offered	0	
5.1.2	Increase the number of online courses offered by	69	79	79	Count	equal to or greater than	State Fiscal Year (July 1 - June 30).	Total number implemented - Report submitted annually	Internal Records- Office of Online and Distance Education	Distance Education Office	Provide opportunities for students to receive education online	Diversify program offerings methods from tradition to online for students	0	Due to COVID, this goal was met all courses were offered online

FY 2020-2021 Agency Accountability Report
FY2021-22 Strategic Plan:

These responses were submitted for the FY 2020-2021 Accountability Report by the
SOUTH CAROLINA STATE UNIVERSITY

Goal Diversify and increase student enrollment to 3500 by 2022														
Strategy 1.1										Statewide Enterprise Objective				
Diversity and Increase new undergraduate student enrollment										Education, Training, and Human Development				
Measure Number	Description	Base	Target	Actual	Value Type	Desired Outcome	Time Applicable	Calculation Method	Data Source	Data Location	Primary Stakeholder	Stakeholder Need Satisfied	State Funded Program Number Responsible	Notes
1.1.1	Increase the number of transfer students by 20%	116	139		Count	equal to or greater than	State Fiscal Year (July 1 - June 30).	Total number of Transfer students enrolled	Admission file	Admissions	Provide pathway for educating SC Citizens	Increase number of diverse students with access to education from the State	0	
1.1.2	Increase the number of transfer students from SC Technical Colleges by 10%	50	60		Count	equal to or greater than	State Fiscal Year (July 1 - June 30).	Total number of SC Technical College Transfer students enrolled	Admission file	Admissions	Provide pathway for educating SC Citizens	Increase number of diverse students with access to education from the State	0	

These responses were submitted for the FY 2020-2021 Accountability Report by the														
SOUTH CAROLINA STATE UNIVERSITY														
Goal Increase overall retention rate from 72% to 82% by 2022														
Strategy 2.1										Statewide Enterprise Objective				
Increase undergraduate retention rate										Education, Training, and Human Development				
Measure Number	Description	Base	Target	Actual	Value Type	Desired Outcome	Time Applicable	Calculation Method	Data Source	Data Location	Primary Stakeholder	Stakeholder Need Satisfied	State Funded Program Number Responsible	Notes
2.1.1	Increase the fall to spring retention rate by 2 points	0.806	0.81		Count	equal to or greater than	State Fiscal Year (July 1 - June 30).	Percent of students retained	Retention file	Institutional Research Office	Provide educated citizenry	Improve graduation of students	0	
2.1.2	Increase the fall to fall retention rate by 2 points	72	0.73		Count	equal to or greater than	State Fiscal Year (July 1 - June 30).	Percent of students retained	Retention file	Institutional Research Office	Provide educated citizenry	Improve graduation of students	0	

These responses were submitted for the FY 2020-2021 Accountability Report by the SOUTH CAROLINA STATE UNIVERSITY														
Goal Increase the number of Programs delivered via distance and online education														
Strategy 4.1										Statewide Enterprise Objective				
Develop a timeline to implement online programs and certification										Education, Training, and Human Development				
Measure Number	Description	Base	Target	Actual	Value Type	Desired Outcome	Time Applicable	Calculation Method	Data Source	Data Location	Primary Stakeholder	Stakeholder Need Satisfied	State Funded Program Number Responsible	Notes
4.1.1	Implement one program per year	1	1		Count	equal to or greater than	State Fiscal Year (July 1 - June 30).	Total number approved - Report submitted annually	Internal Records-	Provost Office	Provide career and educational programs to meet workforce needs	Increase type of programs offered	0	
4.1.2	Increase the number of online courses offered by	79	80		Count	equal to or greater than	State Fiscal Year (July 1 - June 30).	Total number implemented - Report submitted annually	Internal Records-Office of Online and Distance Education	Distance Education Office	Provide opportunities for students to receive education online	Diversify program offerings methods from tradition to online for students	0	

FY 2020-2021 Agency Accountability Report
Budget Responses:

These responses were submitted for the FY 2020-2021 Accountability Report by the
SOUTH CAROLINA STATE UNIVERSITY

			FY 2020-21 Expenditures (Actual)				FY 2021-22 Expenditures (Projected)			
State Funded Program Number	State Funded Program Title	Description of State Funded Program	General	Other	Federal	TOTAL	General	Other	Federal	TOTAL
0200.010100.000	E&G-Unrestricted					\$40,699,204.00				\$41,297,151.00
0200.050100.000	E&G-Restricted					\$1,185,449.00				\$1,193,010.00
0202.010500X000	Teacher Training & Development					\$96,029.00				\$87,923.00
0202.050300X000	EIA-Teacher Recruitment					\$334,482.00				\$339,482.00
0304.000000.000	Auxiliary Enterprises					\$3,310,241.00				\$12,260,220.00
9500.050000.000	State Employer Contributions					\$9,276,870.00				\$9,508,792.00
9800.130000X000	SC State University					\$2,724,476.00				\$2,500,000.00

Legal Responses:

These responses were submitted for the FY 2020-2021 Accountability Report by the
SOUTH CAROLINA STATE UNIVERSITY

Description	Purpose	Law Number	Jurisdiction	Type	Notes
19.1 SCSU: Loan Funds (A) Pursuant to Proviso 19.2, Part IB, of ACT 286 of 2014 South Carolina - South Carolina State University was approved for a loan to be disbursed through a series of scheduled installments.	Requires a service	H240	State	Proviso	Funds received
To provide for annual installment payments by South Carolina State University on outstanding loans made to the university by the State of South Carolina and liabilities incurred pursuant to section 2-65-70, to provide for when the installment payments are due, to provide for a process through which the debt incurred may be relieved, and to extend flexibility related to furloughs as provided in ACT 120 of 2015	Requires a service	S.1166	State	Statute	Payments are made by finance office

FY 2020-2021 Agency Accountability Report
Services Responses:

These responses were submitted for the FY 2020-2021 Accountability Report by the
SOUTH CAROLINA STATE UNIVERSITY

Description of Service	Description of Direct Customer	Customer Name	Others Impacted By the Service	Agency unit providing the service	Description of agency unit	Primary negative impact if service not provided
Provide army recruit training	United States Armed Forces	Students	Increase number of person entering military service	ROTC Program	South Carolina State University ROTC Program	Officers not trained
Provide educational opportunities, degrees, certificates, develop workforce, cultural enrichment, and academic and applied research	State of SC and Nation	Students	Provide educational services for the State's Workforce	Academic Affairs	SC State University's degree granting Colleges and the School of Business provide sixty degrees that benefit our students and contribute to workforce development	Citizens not educated
Provide educational training, certificate programs and professional development	State of SC and Nation	Students	Provide educational services for the State's Workforce	Academic Affairs	SC State University's faculty and staff provide other products and services	Citizens not educated

Agency Partnerships Responses:

These responses were submitted for the FY 2020-2021 Accountability Report by the
SOUTH CAROLINA STATE UNIVERSITY

Name of Partner Entity	Type of Partner Entity	Description of Partnership
Community Higher Education Council	Higher Education Institute	or time conflict at home institution.
National Science Foundation	Federal Government	Research Grants
Savannah River Nuclear Solutions	Federal Government	An Memorandum of Understanding (MOU)-Provides funding for Student Scholarships, Internships and employment
South Carolina Technical Colleges	Higher Education Institute	Provides students seamless enrollment into programs that allow students to enter SC State as Juniors and Articulation Agreements
South Carolina High Schools	K-12 Education Institute	Provides Student Teaching Opportunities
South Carolina State University Foundation	Non-Governmental Organization	Provides funding for student scholarships, academic programs and facilities
South Carolina State University National Alumni Association	Non-Governmental Organization	Provides funding for student scholarships and assist with student recruitment and mentoring
Westinghouse	Non-Governmental Organization	To begin to establish the Institute of Nuclear Energy
Dominion Energy	Non-Governmental Organization	Provide funds for Faculty
Duke Energy	Non-Governmental Organization	Provides scholarships for Nuclear Engineering Students
IBM	Non-Governmental Organization	Provide training and resources for faculty and students
Longenecker & Associates	Private Business Organization	Provide student scholarships and internships
Samsung	Non-Governmental Organization	Provide student scholarships

**FY 2020-2021 Agency Accountability Report
Reports Responses:**

**These responses were submitted for the FY 2020-2021 Accountability Report by the
SOUTH CAROLINA STATE UNIVERSITY**

Report Name	Law Number (If required)	Summary of Information Requested in the Report	Most Recent Submission Date	Reporting Frequency	Type of Entity	Method to Access the Report	Direct access hyperlink or agency contact
Athletic Program Audit		Athletics Program	6/30/2021	Annually	South Carolina state agency or agencies	Hard copy available upon request	Athletic Department
CHE Data File - Completions		Reports all degrees awarded for the previous year	09/25/2020	Annually	South Carolina state agency or agencies	Available on another website	http://www.che.sc.gov/DataPublications.aspx
CHE Data File - Course File		Reports on all courses creditable toward a certificate or degree offered for fall, spring and summer.	10/28/2020,4/2/2021	Annually	South Carolina state agency or agencies	Available on another website	http://www.che.sc.gov/DataPublications.aspx
CHE Data File - Disbursement		Reports on students' receiving a scholarship from the following: HOPE, LIFE, Palmetto Fellows, SC Need Based Grants, Foster Care, National Guard Assistance and Pell Grants.	10/28/2020,04/02/2021,08/18/2021	Annually	South Carolina state agency or agencies	Available on another website	http://www.che.sc.gov/DataPublications.aspx
CHE Data File - Enrollment		Reports on fall, spring and summer students enrolled in courses that lead to degree programs. High School students are included if enrolled in credit courses.	10/28/2020,04/02/2021,08/18/2021	Annually	South Carolina state agency or agencies	Available on another website	http://www.che.sc.gov/DataPublications.aspx
CHE Data File - Facilities		Reports on all buildings under the jurisdiction or control of the institution's governing board.	10/28/2020,04/02/2021,08/18/2021	Annually	South Carolina state agency or agencies	Available on another website	http://www.che.sc.gov/DataPublications.aspx
CHE Data File - Faculty		Reports all faculty data for the fall semester to coincide with reporting of the course data. Faculty include all full-time instructional faculty, all full-time employees who teach, all part-time faculty/staff who teach, and the remainder of the full-time faculty.	11/20/2020	Annually	South Carolina state agency or agencies	Available on another website	http://www.che.sc.gov/DataPublications.aspx
CHE Data File- Abatements		Report on the number of in-state and out-of state abatements awarded		Annually	South Carolina state agency or agencies	Available on another website	http://www.che.sc.gov/DataPublications.aspx
Fall IPEDS Completion		The survey collects institutional data on the number of degrees awarded by level (associate's bachelor's, masters' and doctor's), gender, race, ethnicity and field of study using the Classification of Instruction Program (CIP) Code.	10/14/2020	Annually	Entity within federal government	Available on another website	https://surveys.nces.ed.gov/ipeds/

**These responses were submitted for the FY 2020-2021 Accountability Report by the
SOUTH CAROLINA STATE UNIVERSITY**

Report Name	Law Number (If required)	Summary of Information Requested in the Report	Most Recent Submission Date	Reporting Frequency	Type of Entity	Method to Access the Report	Direct access hyperlink or agency contact
Fall IPEDS 12-Month Enrollment		The survey collects unduplicated enrollment counts of all students enrolled for credit and instructional activity data in postsecondary institutions for an entire 12-month period. Data are collected by level of student and by race/ethnicity and gender. Instructional activity is collected as total credit and/or contact hours attempted at the undergraduate, graduate, and doctor's professional levels.	10/14/2020	Annually	Entity within federal government	Available on another website	https://surveys.nces.ed.gov/ipeds/
Fall IPEDS Institutional Characteristics Report		This survey collects institutional data such as institutional name, address, telephone, control and affiliation, type of degree programs offered, accreditation, tuition and fees, room and board charges required for the academic year	10/14/2020	Annually	Entity within federal government	Available on another website	https://surveys.nces.ed.gov/ipeds/
Financial Audit		Comprehensive Financial Audit of University	6/30/2021	Annually	South Carolina state agency or agencies		
IPEDS 200% Graduation Rates		Data are collected to calculate graduation rates at 200% of normal time to complete all requirements of their program of study for the cohort of full-time, first time bachelor's or equivalent degree-seeking students at 4-year institutions; and for all full-time, first-time degree/certificate-seeking undergraduate students at less than 4-year institutions.	2/10/2021	Annually	Entity within federal government		
IPEDS Academic Libraries		Collects information on library collections, expenses, and services from degree-granting postsecondary institutions. Specific library collection items include physical and electronic/digital books, media, and databases.	4/7/2021	Annually	Entity within federal government	Available on another website	https://surveys.nces.ed.gov/ipeds/
IPEDS Admissions		Data are collected on admissions requirements, the number of applicants, admitted students, the number of admitted students that subsequently enrolled, and percentiles for ACT and SAT test scores. The number of applicants, admitted, and enrolled students is disaggregated by gender; enrolled students are further disaggregated by part-time and full-time status.	2/10/2021	Annually	Entity within federal government		

**These responses were submitted for the FY 2020-2021 Accountability Report by the
SOUTH CAROLINA STATE UNIVERSITY**

Report Name	Law Number (If required)	Summary of Information Requested in the Report	Most Recent Submission Date	Reporting Frequency	Type of Entity	Method to Access the Report	Direct access hyperlink or agency contact
IPEDS Finance		Collects data that describe the financial condition of postsecondary education in the nation. These data are used to monitor changes in postsecondary education finance and to promote research involving institutional financial resources and expenditures. Specific data elements include such items as institutional revenues by source (e.g., tuition and fees, government, private gifts); institutional expenditures by function (e.g., instruction, research, plant maintenance and operation); physical plant assets and indebtedness; and endowment investments. Institutions may use different survey forms depending on the control of institution (e.g. public, private non-profit, or private for-profit) and the accounting standards followed by the institution (e.g. FASB or GASB).	4/7/2021	Annually	Entity within federal government	Available on another website	https://surveys.nces.ed.gov/ipeds/
IPEDS Human Resources		Collects data on employees of November 1 each year. This component of IPEDS was formed in 2006 by combining three previously separate components: Employees by Assigned Position (EAP), Fall Staff (S), and Salaries (SA), by employee assigned positions.	4/7/2021	Annually	Entity within federal government	Available on another website	https://surveys.nces.ed.gov/ipeds/
IPEDS Outcomes Measures		This annual component of IPEDS was added in 2015 to improve the collection of student progression and completion data on a more diverse group of undergraduate students at degree-granting institutions. Award and enrollment statuses are collected on four cohorts of degree/certificate-seeking undergraduate students (full-time, first-time; part-time, first-time; full-time, non-first-time; and part-time, non-first time) at two points of time (six and eight years from the point of entering the institution).	2/10/2021	Annually	Entity within federal government	Available on another website	https://surveys.nces.ed.gov/ipeds/
IPEDS Student Financial Aid		The data collected includes information on the number of full-time, first-time degree-seeking students receiving financial assistance for the previous year, by aid type and average amount received.	2/10/2021	Annually	Entity within federal government	Available on another website	https://surveys.nces.ed.gov/ipeds/

**These responses were submitted for the FY 2020-2021 Accountability Report by the
SOUTH CAROLINA STATE UNIVERSITY**

Report Name	Law Number (If required)	Summary of Information Requested in the Report	Most Recent Submission Date	Reporting Frequency	Type of Entity	Method to Access the Report	Direct access hyperlink or agency contact
IPEDS Student Graduation Rates		This annual survey helps institutions satisfy the requirements of the Student Right-to-Know legislation. Data are collected on the number of students entering the institution as full-time, first-time, degree/certificate-seeking undergraduate students in a particular year (cohort), by race/ethnicity and gender; the number completing their program within 150 percent of normal time to completion; the number that transfer to other institutions if transfer is part of the institution's mission.	2/10/2021	Annually	Entity within federal government	Available on another website	https://surveys.nces.ed.gov/ipeds/
Spring IPEDS Fall Enrollment		Collects data on the number of students enrolled in the fall. Students reported are those enrolled in courses creditable toward a degree; the reports contain the number of full and part time students by gender, race/ethnicity, and level (undergraduate, graduate, first-professional); the total number of undergraduate entering student (first-time, full and part-time students, transfer-ins, and non degree students);and retention rates.	4/7/2021	Annually	Entity within federal government	Available on another website	https://surveys.nces.ed.gov/ipeds/
WSSB Program Audit		Radio Station Program Audit	6/30/2021	Annually	South Carolina state agency or agencies		