

<b>AGENCY NAME:</b>	<b>GOVERNOR'S SCHOOL FOR MATH &amp; SCIENCE</b>		
<b>AGENCY CODE:</b>	<b>H650</b>	<b>SECTION:</b>	<b>010</b>

---

## Fiscal Year 2020–2021 Accountability Report

---

### SUBMISSION FORM

I have reviewed and approved the data submitted by the agency in the following online forms:

- Reorganization and Compliance
- Strategic Plan Results
- Strategic Plan Development
- Legal
- Services
- Partnerships
- Report or Review

I have reviewed and approved the financial report summarizing the agency's budget and actual expenditures, as entered by the agency into the South Carolina Enterprise Information System.

The information submitted is complete and accurate to the extent of my knowledge.

<b>AGENCY DIRECTOR</b> <b>(SIGN AND DATE):</b>	Signature on file.
<b>(TYPE/PRINT NAME):</b>	Ershela L. Sims, Ph.D.

<b>BOARD/CMSN CHAIR</b> <b>(SIGN AND DATE):</b>	Signature on file.
<b>(TYPE/PRINT NAME):</b>	Robert Brown

FY 2020-2021 Agency Accountability Report  
Reorganization and Compliance Responses:

These responses were submitted for the FY 2020-2021 Accountability Report by the

**GOVERNOR'S SCHOOL FOR SCIENCE AND MATH**

**Primary Contact:**

First Name	Last Name	Role/Title	Phone	Email Address
Brock	Heron	Vice President for Finance & Operations	843-383-3906	bheron@gssm.k12.sc.us

**Secondary Contact**

First Name	Last Name	Role/Title	Phone	Email Address
Thomasina	Wilson	Business Office Coordinator	843-383-3946	wilson@governors.school

**Agency Mission**

GSSM seeks out and advances our state's most talented and motivated students, offering a transforming education in science, mathematics, and engineering that cultivates joy in learning and builds the confidence to engage as ethical leaders with the world's most significant issues.

**Adopted in:** 2018

**Agency Vision**

We will be recognized as a national leader in K-12 science and mathematics education, known for developing students who are exceptionally well-prepared to engage in global issues as creative and ethical leaders.

**Adopted in:** 2018

**Recommendations for reorganization requiring legislative change.**

No

**Please list significant events related to the agency that occurred in FY 2020-2021.**

Month Started	Month Ended	Description of Event	Agency Measures Impacted	Other Impacts
July	June	COVID-19	1.2.1, 2.1.1, 3.1.1, 3.1.2, 3.2.1	
June	June	New President of GSSM		

**Does the agency intend to make any other major reorganization to divisions, departments, or programs to allow the agency to operate more effectively and efficiently in FY 2021-22?**

**Note: It is not recommended that agencies plan major reorganization projects every year. This section should remain blank unless there is a need for reorganization.**

No

**Is the agency in compliance with S.C. Code Ann. § 2-1-220, which requires submission of certain reports to the Legislative Services Agency for publication online and the State Library? See also S.C. Code Ann. § 60-2-20.**

Yes

**If not, please explain why.**

**Is the agency in compliance with various requirements to transfer its records, including electronic ones, to the Department of Archives and History? See the Public Records Act (S.C. Code Ann. § 20-1-10 through 20-1-180) and the South Carolina Uniform Electronic Transactions Act (S.C. Code Ann. § 26-6-10 through 26-10-210).**

Yes

**Does the law allow the agency to promulgate regulations?**

No

<b>AGENCY NAME:</b>	<b>SC Governor’s School for Science and Mathematics</b>		
<b>AGENCY CODE:</b>	<b>H65</b>	<b>SECTION:</b>	<b>Department of Education-GSSM</b>

## **AGENCY’S DISCUSSION AND ANALYSIS**

### **Mission Statement**

GSSM seeks out and advances our state’s most talented and motivated students, offering a transforming education in science, mathematics, and engineering that cultivates joy in learning and builds the confidence to engage as ethical leaders with the world’s most significant issues.

### **Vision Statement**

We will be recognized as a national leader in K-12 science and mathematics education, known for developing students who are exceptionally well-prepared to engage in global issues as creative and ethical leaders.

### **GSSM Values**

- *Development and well-being of the whole student*
- *Sense of community between students and faculty/staff*
- *Open communication*
- *Quality curriculum*
- *Supporting education statewide*

### **Accountability Report Highlights:**

#### ***GSSM is Strong and Growing Stronger – Residential Students and Graduates:***

- *100% admitted to college*
- *77% of alumni works in STEM fields*
- *77% of alumni works in their field of study*
- *70% of alumni pursue advanced degrees*
- *84% of alumni major in a STEM field*
- *37% of alumni are currently in careers in SC*
- *2019 – 2020 return to “full capacity.”*

#### ***Strong – Alumni***

- *Engineers*
- *Corporate careers - examples: Google, Microsoft, General Electric, Westinghouse, Exxon*
- *Scientists*
- *Medical careers*
- *Entrepreneurs*
- *Academics*

#### ***GSSM Source of Strength – Faculty / Staff***

- *Credentialed and accomplished (All have Masters, 90% hold PhD’s)*
- *Exemplify excellence and expect it from others*
- *Faculty and staff define their success by students’ success*
- *Shared goals, clear responsibilities*
  - *Learning and mastery*
  - *Growth and maturity*
  - *College and life*

<b>AGENCY NAME:</b>	<b>SC Governor's School for Science and Mathematics</b>		
<b>AGENCY CODE:</b>	<b>H65</b>	<b>SECTION:</b>	<b>Department of Education-GSSM</b>

## ***Virtual Engineering***

### ***Accelerate, TEAM UP, and SVC***

- *Graduated sixth class of seniors who completed the Accelerate program*
- *Piloted a research opportunity in mathematics entitled "Project LEAN." The project included programming in Lean and encoding mathematics proofs to build a library of knowledge called Mathlib. Mentored summer research experiences in collaboration with the GSSM Summer Program for Research Interns were offered to Accelerate students.*
- *Added 2 new district partners for 2021-2020 (Kershaw County SD and Chesterfield County Public Schools)*
- *Expanded our Synchronous Virtual Course program (SVC) to include honors mathematics courses in Algebra 1 and offer an honors level Geometry course for the 2021-2022 school year. SVC courses were offered to Dorchester School District 4 students.*

### ***GSSM Foundations for the Future***

- *Research & Inquiry*
  - *Rising seniors have access to both summer and school-year mentored research & inquiry experiences – 16% of the Residential Class of 2022 is participating in multiple research & inquiry experiences.*
  - *Prepared to resume international research opportunities in Germany once travel conditions allow.*
  - *Continued strengthening and expansion of research site partners at academic institutions – e.g., Clemson University, University of South Carolina, MIT, MUSC, Furman University, Winthrop University, College of Charleston, Wofford College, etc., business – e.g., – as well as businesses and government agencies like AVX, CPM Federal Credit Union, Integrated Systems, Nephron Pharmaceuticals, etc., and government agencies – e.g., SC Department of Natural Resources, and USDA Agricultural Research Service - 35% of research site partners in the summer of 2021 were new or re-engaged partner sites.*
  - *Continued diversification of fields represented in student research & inquiry opportunities which include molecular biology, biomedical research, engineering, material science, chemistry, computer science, robotics, cybersecurity, nanoscience, ecology, psychology, archaeology, sociology, economics, and more.*
  - *Growth of school year research opportunities with recognition of quality through peer-reviewed publication and invitations to present at national conferences. On-going projects include Microwave Spectroscopy, Computational Drug Discovery, and Bike to the Future: Examining Emerging Practices and Problems in Mobility and Infrastructure. Additional opportunities in biology, ecology, and mathematics are in development.*
- 

## **Academic Highlights**

1. Course offerings
  - a. 136 courses offered as semester or year-long courses.
  - b. 73 STEM courses.
  - c. 19 College Board approved AP courses.
  - d. 20 courses for which an AP course is a pre-requisite.
  - e. dual enrolled courses.
2. Junior and Senior Seminar Series of one-hour per week courses
  - a. Juniors take Life and Leisure, Academic Transition, College Planning I, Public Speaking, Emerging Social Skills, Introduction to Research
  - b. Seniors take College Planning II

<b>AGENCY NAME:</b>	<b>SC Governor's School for Science and Mathematics</b>		
<b>AGENCY CODE:</b>	<b>H65</b>	<b>SECTION:</b>	<b>Department of Education-GSSM</b>

3. The course credit agreements with Clemson and the University of South Carolina and with Coker University for challenge exams and dual enrolled course credit remain strong and courses are added as appropriate.
4. Launchpad
  - a. Summer program for a targeted number of rising juniors admitted to GSSM has continued to provide introductions to English and Math as well as life as GSSM student outside of the classroom for two weeks prior to arriving in the fall.
  - b. Program helps students be more prepared to handle the rigors of the academic program at GSSM, especially in the areas of Math, English and Science labs.
  - c. Program also includes a transitional piece to help students adjust to living in a residential setting.
5. Accelerate Engineering – Statewide virtual dual enrollment Engineering program for 10th, 11th & 12th Graders. Participants can earn up to 53 hours of college science, English, mathematics and engineering credits through Coker University. This program is designed to prepare the next generation of leaders in fields of engineering. For 2020-2021, Accelerate Engineering had 142 total students, up from 138 in 2019-2020. Our second virtual engineering program TEAM UP—*Teaching Engaging and Advancing Minds for Undergraduate Preparedness*, entered its second year. This program is less focus on dual enrollment and more focused on exposing students to a breadth of engineering topics and preparing the students for college majors in engineering. Students can earn up to 14 dual enrollment credits while participating. Twenty-nine students participate in TEAM UP.
  - New Partnerships for 2020-2021 school year as follows:
    - Chesterfield County Public Schools: Accelerate and TEAM UP partner
    - Oconee: Accelerate and TEAM UP partner
  - Accelerate: CS111 (Computer Science II) was added as a new dual enrollment elective for the 20-21 school year and MAT 315 (dual enrollment) will be added for the 2021-2022 school year. A complete listing of the Accelerate curriculum can be found here:  
<https://www.scgssm.org/virtual/accelerate/academic-opportunities/courses-and-requirements>
  - Access to SPRI programs for rising seniors continues for all Accelerate/TEAMUP students. Accelerate students may continue SPRI projects through their engineering design process class in the fall semester.
  - Seven Accelerate and one TEAMUP rising seniors participated in SPRI programs at Clemson University, Clemson University International Center for Automotive Research, Winthrop University, Wofford College, AVX, and Nephron Pharmaceuticals.

<b>AGENCY NAME:</b>	<b>SC Governor’s School for Science and Mathematics</b>		
<b>AGENCY CODE:</b>	<b>H65</b>	<b>SECTION:</b>	<b>Department of Education-GSSM</b>

### **Mission Statement for Outreach**

The GSSM Center for Science Education & Outreach is a leader in the development and delivery of innovative and exemplary STEM educational experiences that are designed to improve and support the achievement of students and the professional growth of teachers across South Carolina. The Center is a statewide resource of STEM opportunities for SC students and teachers.

Keys to Fulling the Outreach Center Mission:

- Focusing on the student and teacher needs and excellence;
- Building mutually beneficial partnerships;
- Collaborating with multiple individuals and groups; and
- Developing public-private support.

### **Center for Outreach Goals**

- Developing students’ understanding of the relationship between science, technology, engineering, mathematics, and society;
- Improving the problem-solving and reasoning skills of students;
- Providing opportunities for students and teachers to explore real-world applications of science, technology, engineering, and mathematics;
- Improving content knowledge and pedagogical content knowledge of science and mathematics teachers;
- Encouraging students to explore careers and post-secondary majors in the areas of science, technology, engineering, and mathematics; and
- Encouraging students to consider GSSM as a STEM educational option.

**The combined total statewide impact of students, teachers, and parents served by the Center for Outreach through a variety of virtual and in-person summer learning opportunities and academic year programming was 2799 for 2019-2020.**

GSSM Outreach is the source for increasing GSSM student involvement and expanding its STEM education impact on SC students and teachers for the foreseeable future. The Center for Outreach endeavors are developed and delivered from the support of the State, SC businesses, and private foundations.

### **Student Global Learning Opportunities & Experiences**

- All of our summer 2020 international summer research experiences were cancelled due to COVID-19. These and other global learning opportunities have been placed on hold until conditions are safe for students and instructors to travel internationally.

<b>AGENCY NAME:</b>	<b>SC Governor’s School for Science and Mathematics</b>		
<b>AGENCY CODE:</b>	<b>H65</b>	<b>SECTION:</b>	<b>Department of Education-GSSM</b>

### **Student Research Programs: SPRI & RESP**

Despite ongoing impacts from COVID-19 on student access to research institutions & businesses, GSSM provided mentored research & inquiry opportunities to all students either required or choosing to participate. GSSM Research & Inquiry has continued to innovate to provide significant opportunities to students, diversify experiences, expand school-year research opportunities, extend the network of research partners, include Virtual program students, and increase the sustainability of GSSM’s research & inquiry programming.

- 129 students in the Class of 2022 participated in summer mentored research & inquiry experiences.
  - 115 Residential program students.
  - 13 Accelerate program students.
  - 1 TEAM UP program student.
- 60% of students were able to participate in their summer mentored research & inquiry experience in person.
- 40% of students participated in their summer mentored research & inquiry experience either entirely remotely or with a significant remote portion.
- GSSM students conducted research at 19 sites in South Carolina and 1 in Massachusetts (MIT – remotely) in the Summer of 2021 in 64 research groups.
- 95% of GSSM Class of 2022 Students report that their research experience increased their understanding of the research process.
- 98% of GSSM Class of 2022 Students report that their research experience increased their understanding of their field of research.
- 12% of Residential Class of 2021 students participated in an on-campus, school year research opportunity.

The GSSM Research Experience Scholars Program (RESP) is an international component of the summer mentored research & inquiry program and is discussed below under “Student Global Learning Opportunities & Experiences.

### **Student Global Learning Opportunities & Experiences**

The GSSM Research Experience Scholars Program (RESP) is an international component of the summer mentored research & inquiry program. Due to COVID-19, international travel for students was not possible during the 2020-2021 school year. Partnerships with partner secondary schools – Johanna Wittum Schule (Pforzheim, Germany) and Gymnasium am Rittersberg (Kaiserslautern, Germany) – and research institutions - German Cancer Research Center (Heidelberg, Germany), German Center for Artificial Intelligence (Kaiserslautern, Germany), and Fraunhofer Institute of Experimental Software Engineering (Kaiserslautern, Germany) – remain strong and prepared to resume research & exchange activities once international travel is possible.

AGENCY NAME:	SC Governor's School for Science and Mathematics		
AGENCY CODE:	H65	SECTION:	Department of Education-GSSM

### **2020-2021 Academic Year (AY) Outreach Impact 1972 students/teacher supported:**

The COVID-19 pandemic significantly limited the program offerings for 2020-2021; however, the pandemic presented a challenge for the team to develop innovative ways for delivering some of its programs. Several of the annual in-person programs were transformed into high-quality online synchronous project-based experiences. Despite the limitations and challenges created by the pandemic, the Center for Outreach served a total of 1972 students, teachers, and parents through a wide variety of 86 in-person and virtual STEM learning experiences. interactive activities.

One example of innovation to offer programming for elementary students and teachers that prior to the pandemic was being provided through the GSSM interactive STEAM Bus was the development of ***GSSM Elementary Explore***, which is a series of interactive scientific exploration and investigations that include Interactive Video Vignettes (IVV), activity kits, teacher guides, and student booklets. *Explore* has been designed for student in grade 3-5 and includes topics such as rockets, weather and climate, and physical properties of matter, all of which help teachers meet the SC science curriculum standards. A total of 698 students completed at least one *Explore* series lesson. Two Outreach Center team members submitted a proposal for presenting *Explore* at the 2021 Professional Conference for the National Consortium of Secondary STEM Schools (NCSSS). The proposal was accepted for presentation.

### **Summer 2021 Outreach Center Learning Experiences:**

COVID-19 pandemic conditions improved enough for the GSSM Outreach Center to resume a limited number of in-person 2021 summer program offerings. These programs included the iTEAMs technology day camp, the CREATng engineering day camp, and the GoSciTech residential STEM camp. The day camp experiences were held in 3 partner school district sites and on the GSSM campus. In addition to the in-person camps, the team continued for a second summer offering the virtual project-based Summer STEM program. A total of 827 students participated in the summer programs and these students represent 37 of the state's 46 counties.

Below are several quotes from students, instructors, and parents who were a part of the 2021 summer programs. These comments represent a source of qualitative data that demonstrates the impact the GSSM Outreach Center is having on young SC students.

- "My favorite part was the field trip because we got to see what engineers do with machines. Also, we got to use some machines ourselves."
- "The experience is amazing to allow higher level thinkers to expand their knowledge and develop group skills that are applicable in life."
- "My first "aha" moment was when I first started easily understanding what the script we were coding with actually meant. I also had a big "aha" moment today when I was struggling with moving my player, but then I realized I could go back to Unit 3 and relearn the script."
- "It was wonderful for him to be submerged in learning of technologies, exposure to different kids throughout the county, as well as being surrounded by peers of his level of thinking, comprehension, etc."
- "GSSM offered a wide range of STEM topics, had the option for residential or day camps, generated strong learning experiences. Overall it was a great experience."
- "Unlike my experience with online schools/clinics, this was a very intimate experience with a small group, and I felt valued."

"It was such a breath of fresh air to hear my child laugh and actively been engaged in learning for the first time since COVID and quarantining began!!!"



<b>AGENCY NAME:</b>	<b>SC Governor’s School for Science and Mathematics</b>		
<b>AGENCY CODE:</b>	<b>H65</b>	<b>SECTION:</b>	<b>Department of Education-GSSM</b>

## **Student Development**

### **Athletics**

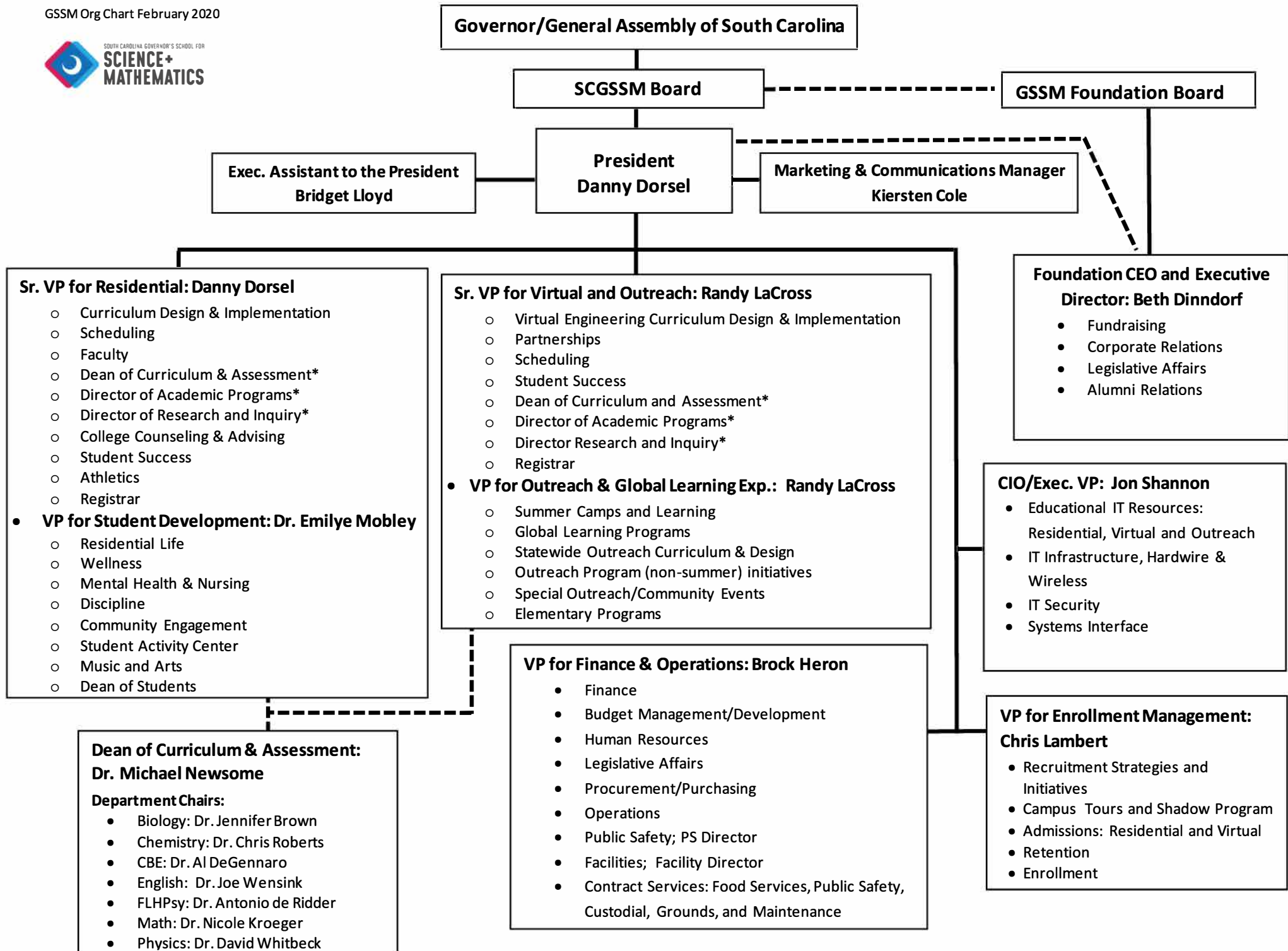
- Due to the COVID-19 pandemic, GSSM did not participate in interscholastic sports for the 2020 – 2021 school year. 72% of our students did participate in intramural sports during the year.

### **Campus Life**

- Campus Life contracted an RLC specifically to work with students concerning Diversity and Inclusion. Students leading cultural groups on campus must participate in diversity training that will take place later in the fall.
- Workshops were held to assist students with operating their clubs and organizations.
- More than 60 clubs participated in the Virtual club fair
- The programming curriculum is now in its 3<sup>rd</sup> year of implementation. Last year school year, Campus Life sponsored over 110 programs and events for students.

## **Risk Assessment and Mitigation Strategies:**

- GSSM provides uniquely advanced education opportunities in multiple settings to highly capable students around the state. Our goals and objectives should enhance quality, availability, and access statewide. Failure to meet these goals would mean that the school is not providing top-tier education, that its programs are not available in areas where students who need them, or that where they are available, they are not equally accessible to all students.
- Thanks to historically strong support from the state legislature, private partnerships, and an active community of parents and alumni, the school is well-positioned to achieve its goals with excellence. Continued support of our programs, especially the growth of our Outreach initiatives, is key to our ability to identify and nurture talented students to lead the state’s knowledge economy.



\*Dual reporting line to SVP for Residential and SVP for Virtual and Outreach

FY 2020-2021 Agency Accountability Report  
FY2020-21 Strategic Plan Results:

These responses were submitted for the FY 2020-2021 Accountability Report by the  
GOVERNOR'S SCHOOL FOR SCIENCE AND MATH

Goal Provide the best advanced education for S.C.'s most selective students														
Strategy 1.1										Statewide Enterprise Objective				
Provide the best credentialed and most experienced teachers in all subjects										Education, Training, and Human Development				
Measure Number	Description	Base	Target	Actual	Value Type	Desired Outcome	Time Applicable	Calculation Method	Data Source	Data Location	Primary Stakeholder	Stakeholder Need Satisfied	State Funded Program Number Responsible	Notes
1.1.1	Hire teachers with minimum Master's degrees, PhD's preferred in their areas - appropriate to full-capacity growth of student body.	100%	100%	100%	Percent	Maintain	State Fiscal Year (July 1 - June 30).	% of Masters'/PhD/Faculty	School Records	Human Resources	A well-educated faculty experienced in higher education.	GSSM Students	5001.000000.000	
1.1.2	Maintain low student to teacher ratio, reported as average number of students per teacher.	9-1	9-1	9-1	Ratio	Maintain	State Fiscal Year (July 1 - June 30).	Students/Teachers	School Records	Human Resources	College level courses taught to high school students.	GSSM Students	5001.000000.000	
1.1.3	100% of GSSM grads admitted undergraduate school	100%	100%	100%	Percent	Maintain	Calendar Year (January 1 - December 31)	Number of students admitted to undergraduate school	School Records	College Counseling	Ensure that GSSM students will receive the opportunity for a postsecondary education.	GSSM Students	5001.000000.000	

These responses were submitted for the FY 2020-2021 Accountability Report by the  
GOVERNOR'S SCHOOL FOR SCIENCE AND MATH

Goal Provide the best advanced education for S.C.'s most selective students														
Strategy 1.2										Statewide Enterprise Objective				
Continually advance curriculum offerings in the residential, virtual and outreach programs										Education, Training, and Human Development				
Measure Number	Description	Base	Target	Actual	Value Type	Desired Outcome	Time Applicable	Calculation Method	Data Source	Data Location	Primary Stakeholder	Stakeholder Need Satisfied	State Funded Budget Program Number Responsible	Notes
1.2.1	Identify and attract larger pools of talented students to reach through outreach programs	0	2925	2799	Count	equal to or greater than	Other	Number of virtual/outreach students	School Records	GSSM Outreach	South Carolina Students	Accessibility to GSSM educational programs.	5001.000000.000	Covid-19 affected our ability to go into the schools
1.2.2	Continue to maintain Engineering offerings in residential program at GSSM		12	12	Count	equal to or greater than	Other	Number of engineering courses in residential program	School Records	GSSM Residential	GSSM Students	To prepare GSSM students for college engineering programs and engineering careers.	5001.000000.000	
1.2.3	Continue to increase Engineering offerings in virtual program at GSSM		12	14	Count	equal to or greater than	Other	Number of engineering courses in virtual program	School Records	GSSM Accelerate/TEA M UP	GSSM Virtual Students	To prepare GSSM students for college engineering programs and engineering careers.	5001.000000.000	
1.2.4	Identify and attract larger pools of talented students to reach through virtual programs		135	142	Count	equal to or greater than	Other	Number of Accelerate & TEAM UP students	School Records	GSSM Accelerate/TEA M UP	South Carolina Students	Provide STEM education to students in their home districts throughout the state.	5001.000000.000	
1.2.5	Deliver foundational math and other STEM courses in a synchronous virtual format to students around the state		160	151	Count	equal to or greater than	Other	Number of SVC students (fall + spring)	School Records	GSSM Synchronous Virtual Courses (SVC)	GSSM Virtual Students	Provide STEM education to students in their home districts throughout the state.	5001.000000.000	







These responses were submitted for the FY 2020-2021 Accountability Report by the														
GOVERNOR'S SCHOOL FOR SCIENCE AND MATH														
Goal	Operate a residential campus supportive of students in activities, character development and safety													
Strategy	2.3									Statewide Enterprise Objective				
Ensure physical and mental health of students										Education, Training, and Human Development				
Measure Number	Description	Base	Target	Actual	Value Type	Desired Outcome	Time Applicable	Calculation Method	Data Source	Data Location	Primary Stakeholder	Stakeholder Need Satisfied	State Funded Budget Program Number Responsible	Notes
2.3.1	Provide mental health licensed professionals to support mental health of the students	2	2	2.5	Count	equal to or greater than	State Fiscal Year (July 1 - June 30).	Number of mental health professionals with a PhD/MD	School Records	Health Services	GSSM Residential Students	Provide students with well-trained mental health professionals on campus.	5001.000000.000	
2.3.2	Provide extensive qualified nursing services to include medication management	14	14	14	Count	equal to or greater than	Other	Number of weekday and weekend shifts nurses are available to provide health care	School Records	Health Services	GSSM Residential Students	Meet the health needs of our residential students on campus.	5001.000000.000	



These responses were submitted for the FY 2020-2021 Accountability Report by the														
GOVERNOR'S SCHOOL FOR SCIENCE AND MATH														
Goal	Lead in the development and delivery of statewide academic opportunities that support and improve achievement via GSSM Research and Outreach Center programs and initiatives													
Strategy	3.1									Statewide Enterprise Objective				
Enhance GSSM's advanced research program opportunities for residential students										Education, Training, and Human Development				
Measure Number	Description	Base	Target	Actual	Value Type	Desired Outcome	Time Applicable	Calculation Method	Data Source	Data Location	Primary Stakeholder	Stakeholder Need Satisfied	State Funded Budget Program Number Responsible	Notes
3.1.1	Increase diverse research opportunities at state, national and international universities and/or industrial sites	17	20	20	Count	equal to or greater than	Other	Number of research sites	School Records	GSSM Residential	GSSM Students	Provide opportunities for students to learn outside the classroom through real-world research experiences.	5001.000000.000	
3.1.2	Provide research opportunities for virtual students	11	13	14	Count	equal to or greater than	Other	Number of virtual students participating in research	School Records	Accelerate Program	GSSM Virtual Students	Provide opportunities for students to learn outside the classroom through real-world research experiences.	5001.000000.000	

FY 2020-2021 Agency Accountability Report  
FY2021-22 Strategic Plan:

These responses were submitted for the FY 2020-2021 Accountability Report by the  
GOVERNOR'S SCHOOL FOR SCIENCE AND MATH

Goal Provide the best advanced education for S.C.'s most selective students														
Strategy 1.1										Statewide Enterprise Objective				
Provide the best credentialed and most experienced teachers in all subjects										Education, Training, and Human Development				
Measure Number	Description	Base	Target	Actual	Value Type	Desired Outcome	Time Applicable	Calculation Method	Data Source	Data Location	Primary Stakeholder	Stakeholder Need Satisfied	State Funded Program Number Responsible	Notes
1.1.1	Hire teachers with minimum Master's degrees, PhD's preferred in their areas - appropriate to full-capacity growth of student body.	100%	100%		Percent	Maintain	State Fiscal Year (July 1 - June 30).	% of Masters'/PhD/Faculty	School Records	Human Resources	A well-educated faculty experienced in higher education.	GSSM Students	5001.000000.000	
1.1.2	Maintain low student to teacher ratio, reported as average number of students per teacher.	9-1	9-1		Ratio	Maintain	State Fiscal Year (July 1 - June 30).	Students/Teachers	School Records	Human Resources	College level courses taught to high school students.	GSSM Students	5001.000000.000	
1.1.3	100% of GSSM grads admitted undergraduate school	100%	100%		Percent	Maintain	Calendar Year (January 1 - December 31)	Number of students admitted to undergraduate school	School Records	College Counseling	Ensure that GSSM students will receive the opportunity for a postsecondary education.	GSSM Students	5001.000000.000	

These responses were submitted for the FY 2020-2021 Accountability Report by the														
GOVERNOR'S SCHOOL FOR SCIENCE AND MATH														
Goal Provide the best advanced education for S.C.'s most selective students														
Strategy 1.2										Statewide Enterprise Objective				
Continually advance curriculum offerings in the residential, virtual and outreach programs										Education, Training, and Human Development				
Measure Number	Description	Base	Target	Actual	Value Type	Desired Outcome	Time Applicable	Calculation Method	Data Source	Data Location	Primary Stakeholder	Stakeholder Need Satisfied	State Funded Budget Program Number Responsible	Notes
1.2.1	Identify and attract larger pools of talented students to reach through outreach programs	2799	2925		Count	equal to or greater than	Other	Number of virtual/outreach students	School Records	GSSM Outreach	South Carolina Students	Accessibility to GSSM educational programs.	5001.000000.000	
1.2.2	Continue to maintain or increase engineering offerings at GSSM.	18	18		Count	equal to or greater than		Number of engineering courses at GSSM.	School Records	GSSM Academics	To prepare GSSM students for college engineering programs and engineering careers.	GSSM students	5001.000000.000	
1.2.3	Identify and attract larger pools of talented students to reach through virtual programs	142	135		Count	equal to or greater than	Other	Number of Accelerate & TEAM UP students	School Records	GSSM Accelerate/TEAM UP	South Carolina Students	Provide STEM education to students in their home districts throughout the state.	5001.000000.000	
1.2.4	Deliver foundational math and other STEM courses in a synchronous virtual format to students around the state	151	160		Count	equal to or greater than	Other	Number of SVC students (fall + spring)	School Records	GSSM Synchronous Virtual Courses (SVC)	GSSM Virtual Students	Provide STEM education to students in their home districts throughout the state.	5001.000000.000	

[illegible]

These responses were submitted for the FY 2020-2021 Accountability Report by the														
GOVERNOR'S SCHOOL FOR SCIENCE AND MATH														
Goal Operate a residential campus supportive of students in activities, character development and safety														
Strategy 2.1										Statewide Enterprise Objective				
Conduct Extracurricular Programs appropriate to an academically-focused residential high school										Education, Training, and Human Development				
Measure Number	Description	Base	Target	Actual	Value Type	Desired Outcome	Time Applicable	Calculation Method	Data Source	Data Location	Primary Stakeholder	Stakeholder Need Satisfied	State Funded Budget Program Number Responsible	Notes
2.1.1	Increase student participation on athletic teams by providing sports that support student interests and abilities	72%	85%		Percent	equal to or greater than	Other	% of residential students participating in SCHSL athletics	School Records	GSSM Residential	GSSM Residential Students	Provide opportunities for students to participate in athletic events on a interscholastic level.	5001.000000.000	
2.1.2	Increase student participation in clubs and organizations by providing opportunities that match student interests and abilities	95%	96%		Percent	equal to or greater than	Other	% of students involved in clubs and organizations	School Records	GSSM Residential	GSSM Residential Students	Provide opportunities for students to explore and develop other interests outside of class.	5001.000000.000	

These responses were submitted for the FY 2020-2021 Accountability Report by the														
GOVERNOR'S SCHOOL FOR SCIENCE AND MATH														
Goal Operate a residential campus supportive of students in activities, character development and safety														
Strategy 2.2										Statewide Enterprise Objective				
Create arts and music programs supporting students interests and talents										Education, Training, and Human Development				
Measure Number	Description	Base	Target	Actual	Value Type	Desired Outcome	Time Applicable	Calculation Method	Data Source	Data Location	Primary Stakeholder	Stakeholder Need Satisfied	State Funded Budget Program Number Responsible	Notes
2.2.1	Maintain specialized art and music instructors to foster student development in art & music	2	2		Count	equal to or greater than	Other	Number of teachers for art and music	School Records	Human Resources	GSSM Residential Students	Provide opportunities for students to develop other talents and meet GSSM graduation requirements.	5001.000000.000	

These responses were submitted for the FY 2020-2021 Accountability Report by the														
GOVERNOR'S SCHOOL FOR SCIENCE AND MATH														
Goal	Operate a residential campus supportive of students in activities, character development and safety													
Strategy	2.3									Statewide Enterprise Objective				
Ensure physical and mental health of students										Education, Training, and Human Development				
Measure Number	Description	Base	Target	Actual	Value Type	Desired Outcome	Time Applicable	Calculation Method	Data Source	Data Location	Primary Stakeholder	Stakeholder Need Satisfied	State Funded Budget Program Number Responsible	Notes
2.3.1	Provide mental health licensed professionals to support mental health of the students	2.5	2.5		Count	equal to or greater than	State Fiscal Year (July 1 - June 30).	Number of mental health professionals with a PhD/MD	School Records	Health Services	GSSM Residential Students	Provide students with well-trained mental health professionals on campus.	5001.000000.000	
2.3.2	Provide extensive qualified nursing services to include medication management	14	14		Count	equal to or greater than	Other	Number of weekday and weekend shifts nurses are available to provide health care	School Records	Health Services	GSSM Residential Students	Meet the health needs of our residential students on campus.	5001.000000.000	

These responses were submitted for the FY 2020-2021 Accountability Report by the														
GOVERNOR'S SCHOOL FOR SCIENCE AND MATH														
Goal	Lead in the development and delivery of statewide academic opportunities that support and improve achievement via GSSM Research and Outreach Center programs and initiatives													
Strategy	3.1									Statewide Enterprise Objective				
Enhance GSSM's advanced research program opportunities for residential students										Education, Training, and Human Development				
Measure Number	Description	Base	Target	Actual	Value Type	Desired Outcome	Time Applicable	Calculation Method	Data Source	Data Location	Primary Stakeholder	Stakeholder Need Satisfied	State Funded Budget Program Number Responsible	Notes
3.1.1	Increase diverse research opportunities at state, national and international universities and/or industrial sites	20	20		Count	equal to or greater than	Other	Number of research sites	School Records	GSSM Residential	GSSM Students	Provide opportunities for students to learn outside the classroom through real-world research experiences.	5001.000000.000	
3.1.2	Provide research opportunities for virtual students	14	13		Count	equal to or greater than	Other	Number of virtual students participating in research	School Records	Accelerate Program	GSSM Virtual Students	Provide opportunities for students to learn outside the classroom through real-world research experiences.	5001.000000.000	



These responses were submitted for the FY 2020-2021 Accountability Report by the														
GOVERNOR'S SCHOOL FOR SCIENCE AND MATH														
Goal	Lead in the development and delivery of statewide academic opportunities that support and improve achievement via GSSM Research and Outreach Center programs and initiatives													
Strategy	3.2									Statewide Enterprise Objective				
Enhance and expand high-quality statewide academic programs developed and delivered by the GSSM Outreach Center										Education, Training, and Human Development				
Measure Number	Description	Base	Target	Actual	Value Type	Desired Outcome	Time Applicable	Calculation Method	Data Source	Data Location	Primary Stakeholder	Stakeholder Need Satisfied	State Funded Budget Program Number Responsible	Notes
3.2.1	Increase programs targeted to specific age and demographic groups	1027	60		Count	equal to or greater than	State Fiscal Year (July 1 - June 30).	Number of students participating in virtual classes	School Records	Outreach	South Carolina School Districts	Target both younger students and students in underserved areas of the state to experience STEM education both on-campus and at their home districts.	5001.000000.000	
3.2.2	Increase Outreach partners, both at schools & districts, and with business partners.	102	110		Count	equal to or greater than	State Fiscal Year (July 1 - June 30).	Number of school districts	School Records	GSSM Outreach	South Carolina School Districts	Provide opportunities for students to experience STEM education both on-campus and at their home districts.	5001.000000.000	
3.2.3	Continue to grow Accelerate Engineering Statewide program	17	22		Count	equal to or greater than	Other	Number of sites participating for the Accelerate Engineering Program	School Records	GSSM Accelerate/TEA M UP	South Carolina School Districts	Expand STEM opportunities for our school districts.	5001.000000.000	

FY 2020-2021 Agency Accountability Report  
Budget Responses:

These responses were submitted for the FY 2020-2021 Accountability Report by the  
GOVERNOR'S SCHOOL FOR SCIENCE AND MATHEMATICS

			FY 2020-21 Expenditures (Actual)				FY 2021-22 Expenditures (Projected)			
State Funded Program Number	State Funded Program Title	Description of State Funded Program	General	Other	Federal	TOTAL	General	Other	Federal	TOTAL
5001.000000.000	Governor's School for Science and Mathematics	Education of academically talented students with accelerated instruction of STEM courses.	\$14,353,563.00	\$1,908,334.00		\$16,261,897.00	\$13,976,120.00	\$1,246,500.00		\$15,222,620.00

FY 2020-2021 Agency Accountability Report					
Legal Responses:					
These responses were submitted for the FY 2020-2021 Accountability Report by the					
GOVERNOR'S SCHOOL FOR SCIENCE AND MATH					
Description	Purpose	Law Number	Jurisdiction	Type	Notes
Establishment of school.	Requires a service	59-48-10	State	Statute	Accelerated instruction in mathematics and science in a residential educational setting.
Board of trustees; appointment; term of office; compensation.	Board, commission, or committee on which someone from our agency must/may serve	59-48-20	State	Statute	
Establish School and Governing Body 1987	Board, commission, or committee on which someone from our agency must/may serve	CHAPTER 48. HISTORY: 1987 Act No. 170, Part II, Section 23.	State	Statute	
GSSM will develop a plan to operate the school separately from the Department of Education.	Requires a manner of delivery	Proviso 1.100	State	FY 2020-21 Proviso	
1.22. (SDE: Governor's School Leave Policy) The South Carolina Governor's School for the Arts and Humanities and the South Carolina Governor's School for Science and Mathematics are authorized to promulgate administrative policy governing annual and sick leave relative to faculty and staff with the approval of their respective board of directors. This policy shall address their respective school calendars in order to comply with the instructional needs of students attending both special schools.	Requires a manner of delivery	Proviso 1.22	State	FY 2019-20 Proviso	
1.29. (SDE: Governor's Schools' Fees) The South Carolina Governor's School for the Arts and Humanities and the South Carolina Governor's School for Science and Mathematics are authorized to charge, collect, expend, and carry forward student fees as approved by their respective Board of Directors. The purpose and amount of any such fees will be to maintain program quality in both academics and residential support. No student will be denied admittance or participation due to financial inability to pay. The respective Board of Directors shall promulgate administrative policy governing the collection of all student fees. Both schools shall conspicuously publish a fee schedule on their respective websites.	Funding agency deliverable(s)	Proviso 1.29	State	FY 2019-20 Proviso	

These responses were submitted for the FY 2020-2021 Accountability Report by the  
GOVERNOR'S SCHOOL FOR SCIENCE AND MATH

Description	Purpose	Law Number	Jurisdiction	Type	Notes
1.44. (SDE: Governor’s Schools Residency Requirement) Of the funds appropriated, the Governor’s School for the Arts and the Humanities and the Governor’s School for Science and Mathematics are to ensure that a parent(s) or guardian(s) of a student attending either the Governor’s School for the Arts and the Humanities or the Governor’s School for Science and Mathematics must prove that they are a legal resident of the state of South Carolina at the time of application and must remain so throughout time of attendance. The Governor’s School for the Arts and the Humanities and Governor’s School for Science and Mathematics may not admit students whose parent(s) or guardian(s) are not legal residents of South Carolina.	Report our agency must/may provide	Proviso 1.44	State	FY 2019-20 Proviso	
1.60. (SDE: Governor's Schools Informational Access to Students) For the current fiscal year, school districts must permit both the Governor's School for the Arts and Humanities and the Governor's School for Science and Mathematics to collaborate with individual schools and their staff to share information with students and families about the educational opportunities offered at the respective Governor's Schools, through avenues including school visits, informational presentations, and posters. By June thirtieth, of the current fiscal year, the Governor's School for the Arts and Humanities and the Governor's School for Science and Mathematics must report to the Chairman of the Senate Finance Committee and the Chairman of the House Ways and Means Committee the results of these Informational Access efforts. Further, the two Governor's Schools will work with districts, the Department of Education and School Report Card administrators, to ensure that SAT scores of current Governor's Schools' students are included in the School Report Card of those students' resident schools and districts.	Report our agency must/may provide	Proviso 1.60	State	FY 2019-20 Proviso	
1.7. (SDE: Governor’s School for Science & Math) Any unexpended balance on June thirtieth of the prior fiscal year of funds appropriated to or generated by the Governor’s School for Science and Mathematics may be carried forward and expended in the current fiscal year pursuant to the direction of the board of trustees of the school.	Funding agency deliverable(s)	Proviso 1.7	State	FY 2019-20 Proviso	

These responses were submitted for the FY 2020-2021 Accountability Report by the  
GOVERNOR'S SCHOOL FOR SCIENCE AND MATH

Description	Purpose	Law Number	Jurisdiction	Type	Notes
117.15. (GP: Allowance for Residences & Compensation Restrictions) That salaries paid to officers and employees of the State, including its several boards, commissions, and institutions shall be in full for all services rendered, and no perquisites of office or of employment shall be allowed in addition thereto, but such perquisites, commodities, services or other benefits shall be charged for at the prevailing local value and without the purpose or effect of increasing the compensation of said officer or employee. The charge for these items may be payroll deducted at the discretion of the Comptroller General or the chief financial officer at each agency maintaining its own payroll system. This shall not apply to the Governor's Mansion, nor to guards at any of the state's penal institutions and nurses and attendants at the Department of Disabilities and Special Needs, and registered nurses providing clinical care at the MUSC Medical Center, nor to the Superintendent and staff of John de la Howe School, nor to the cottage parents and staff of Wil Lou Gray Opportunity School, nor to full-time or part-time staff who work after regular working hours in the SLED Communications Center or Maintenance Area, nor to adult staff at the Governor's School for Science and Mathematics and the Governor's School for Arts and Humanities who are required to stay on campus by the institution because of job requirements or program participation. Any state institution of higher learning may provide complimentary membership privileges to employees who work at their wellness centers. The presidents of those state institutions of higher learning authorized to provide on-campus residential facilities for students may be permitted to occupy residences on the grounds of such institutions without charge.	Requires a manner of delivery	Proviso 117.15	State	FY 2019-20 Proviso	
117.45. (GP: Facility Rental Fee) The Governor's School for the Arts and Humanities, Governor's School for Science and Mathematics, Wil Lou Gray Opportunity School, and John de la Howe School are authorized to charge, collect, expend and carry forward fees charged for facility and equipment rental and registration	Funding agency deliverable(s)	Proviso 117.45	State	FY 2019-20 Proviso	

These responses were submitted for the FY 2020-2021 Accountability Report by the					
GOVERNOR'S SCHOOL FOR SCIENCE AND MATH					
Description	Purpose	Law Number	Jurisdiction	Type	Notes
1A.4 (SDE-EIA: Teacher Salaries/State Agencies) Each state agency which does not contain a school district but has instructional personnel shall receive an appropriation as recommended by the Education Oversight Committee and funded by the General Assembly for teacher salaries based on the following formula: Each state agency shall receive such funds as are necessary to adjust the pay of all instructional personnel to the appropriate salary provided by the salary schedules of the school district in which the agency is located. Instructional personnel may include all positions which would be eligible for EIA supplements in a public school district, and may at the discretion of the state agency, be defined to cover curriculum development specialists, educational testing psychologists, psychological and guidance counselors, and principals. The twelve-month agricultural teachers located at Clemson University are to be included in this allocation of funds for base salary increases. The South Carolina Governor's School for the Arts and Humanities and the South Carolina Governor's School for Science and Mathematics are authorized to increase the salaries of instructional personnel by an amount equal to the percentage increase given by the School District in which they are both located.	Report our agency must/may provide	Proviso 1A.4	State	FY 2019-20 Proviso	

FY 2020-2021 Agency Accountability Report  
**Services Responses:**

These responses were submitted for the FY 2020-2021 Accountability Report by the  
**GOVERNOR'S SCHOOL FOR SCIENCE AND MATH**

Description of Service	Description of Direct Customer	Customer Name	Others Impacted By the Service	Agency unit providing the service	Description of agency unit	Primary negative impact if service not provided
Advanced Educational Programs	General Public and subsections to include families with school-age children appropriate for GSSM program Participation.	South Carolina Students	Higher Education, Business Partners, General Public	Academics	Advanced Curriculum and Training	Fewer opportunities for advanced STEM education.
Provide Residential Environment for Well-being and Development	Families with school-age children appropriate for GSSM program Participation.	South Carolina Students		Life in Residence	Provide Residential Environment for Well-being and development of students staying on-campus	High-level educational process will be compromised and hinder learning.
Advanced Educational Programs - Statewide, grades 7-12, Teacher Development & Growth	General Public and subsections to include families with school-age children appropriate for GSSM program Participation.	South Carolina Students	Higher Education, Business Partners, General Public, School Districts	Outreach	Statewide Educational Programs for students and Teachers, to include Engineering, Summer Camps, 9th grade Algebra II, Professional Development for Teachers and Distance Education in Advanced Courses.	Fewer opportunities to expose younger students to STEM opportunities provide by GSSM.
Meet Reporting and Stewardship Needs	General Public and taxpaying citizens of South Carolina	Taxpayers of South Carolina	Executive and Legislative Branch, General Public, Business Partners	Administration	Meet Reporting and Stewardship Needs	Risk of underspending or overspending in areas of GSSM.

Agency Partnerships Responses:

These responses were submitted for the FY 2020-2021 Accountability Report by the

GOVERNOR'S SCHOOL FOR SCIENCE AND MATH

Name of Partner Entity	Type of Partner Entity	Description of Partnership
Clemson University	Higher Education Institute	Course equivalency agreements for course credit. Summer Advanced Research placements of GSSM students on campus and with University Scientists
University of South Carolina	Higher Education Institute	Course equivalency agreements for course credit. Summer Advanced Research placements of GSSM students on campus and with University Scientists
School Districts in South Carolina	K-12 Education Institute	Provide Teacher Training and Outreach Programs for teachers and students. Recruit and partner on educational Initiatives
MUSC	Higher Education Institute	Summer Advanced Research placements of GSSM students on campus and with University Scientists
S.C. State	Higher Education Institute	Summer Advanced Research placements of GSSM students on campus and with University Scientists. Teacher Training and Engineering partnerships
College of Charleston	Higher Education Institute	Summer Advanced Research placements of GSSM students on campus and with University Scientists
S.C. High Schools	K-12 Education Institute	Provide Teacher Training and Outreach Programs for teachers and students. Recruit and partner on educational Initiatives
S.C. Middle Schools	K-12 Education Institute	Provide Teacher Training and Outreach Programs for teachers and students. Recruit and partner on educational Initiatives
S.C. Elementary Schools	K-12 Education Institute	Provide Teacher Training and Outreach Programs for teachers and students. Recruit and partner on educational Initiatives
Business/Industry Partnerships	Private Business Organization	Outreach and Residential efforts and support to include Accelerate Engineering, Economics and Finance, Mandarin Chinese Foreign Language Instruction and many others
Coker University	Higher Education Institute	Dual Enrollment agreements for course credit.



FY 2020-2021 Agency Accountability Report  
Reports Responses:

These responses were submitted for the FY 2020-2021 Accountability Report by the  
GOVERNOR'S SCHOOL FOR SCIENCE AND MATH

Report Name	Law Number (If required)	Summary of Information Requested in the Report	Most Recent Submission Date	Reporting Frequency	Type of Entity	Method to Access the Report	Direct access hyperlink or agency contact
Annual State Audit	SECTION 11-7-20	Policies and Procedures review, Variances in Line Items, Justifications	July 29, 2020	Annually	South Carolina state agency or agencies	Electronic copy available upon request	<a href="https://osa.sc.gov/reports/">https://osa.sc.gov/reports/</a>
S.C. School Report Card	SECTION 59-18- 110	Benchmarks and metrics in comparison to public schools	September 2020	Annually	South Carolina state agency or agencies	Electronic copy available upon request	<a href="https://screportcards.ed.sc.gov/">https://screportcards.ed.sc.g ov/</a>
SC Governor's School for Science and Mathematics Annual Budget		Budget Priorities and Justifications - For Approval	May 21, 2021	Annually	South Carolina state agency or agencies	Electronic copy available upon request	Finance and Operations Department 843-383-3901
State Budget Request		Budget Priorities and Justifications	October 13, 2020	Annually	Governor or Lt. Governor AND Legislative entity or entities AND South Carolina state agency or agencies	Electronic copy available upon request	Finance and Operations Department 843-383-3901
State Human Affairs Commission Report to the General Assembly	SECTION 1-13- 110	Hiring and Minority Employment Assessment	10/01/2020 - 12/31/2020	Annually	Legislative entity or entities AND South Carolina state agency or agencies	Electronic copy available upon request	<a href="https://schac.sc.gov/sites/default/files/Documents/2021%20Report%20to%20the%20General%20Assembly.pdf">https://schac.sc.gov/sites/def ault/files/Documents/2021% 20Report%20to%20the%20G eneral%20Assembly.pdf</a>