

AGENCY NAME:	CLEMSON PSA		
AGENCY CODE:	P200	SECTION:	045

Fiscal Year 2020–2021 Accountability Report

SUBMISSION FORM

I have reviewed and approved the data submitted by the agency in the following online forms:

- Reorganization and Compliance
- Strategic Plan Results
- Strategic Plan Development
- Legal
- Services
- Partnerships
- Report or Review

I have reviewed and approved the financial report summarizing the agency's budget and actual expenditures, as entered by the agency into the South Carolina Enterprise Information System.

The information submitted is complete and accurate to the extent of my knowledge.

AGENCY DIRECTOR (SIGN AND DATE):	Signature on file.
(TYPE/PRINT NAME):	Dr. George R. Askew, Vice President Clemson University Public Service and Agriculture

BOARD/CMSN CHAIR (SIGN AND DATE):	Signature on file.
(TYPE/PRINT NAME):	Ms. Kim Wilkerson, Chairman, Clemson University Board of Trustees

FY 2020-2021 Agency Accountability Report
Reorganization and Compliance Responses:

These responses were submitted for the FY 2020-2021 Accountability Report by the

CLEMSON UNIVERSITY - PSA

Primary Contact:

First Name	Last Name	Role/Title	Phone	Email Address
Susan	Guynn	Director of Assessment and Scholarship	864-656-0606	sguynn@clemson.edu

Secondary Contact

First Name	Last Name	Role/Title	Phone	Email Address
George	Askew	VP for PSA	864-656-3140	gaskew@clemson.edu

Agency Mission

Clemson Public Service and Agriculture (PSA) is a state agency comprised of four units: Clemson Experiment Station, Clemson Cooperative Extension Service, Livestock and Poultry Health, and Regulatory Services. Clemson PSA safeguards the health and safety of livestock, poultry and companion animals and protects the food supply and public health of South Carolinians through its Livestock Poultry Health division, while PSA's Regulatory Services division ensures the safe, effective use of fertilizers and pesticides, and the quality of seeds and plants grown in the state and conducts programs that prevent agroterrorism. Clemson PSA works collaboratively with Clemson's College of Agriculture, Forestry and Life Sciences to conduct research and outreach through the Clemson Experiment Station and Clemson Cooperative Extension Service.

Adopted in: 2014

Agency Vision

To be acknowledged as the foremost provider of practical new discoveries, outreach and education, and technical assistance in the areas of agrisystems productivity and profitability, agribusiness, environmental and natural resources, food safety and nutrition, and 4-H youth development to enhance the quality of life for South Carolina's citizens.

Adopted in: 2014

Recommendations for reorganization requiring legislative change.

No

Please list significant events related to the agency that occurred in FY 2020-2021.

Month Started	Month Ended	Description of Event	Agency Measures Impacted	Other Impacts
July	June	COVID-19 Pandemic	Many of the measures were impacted due to in-person restrictions	

Does the agency intend to make any other major reorganization to divisions, departments, or programs to allow the agency to operate more effectively and efficiently in FY 2021-22?

Note: It is not recommended that agencies plan major reorganization projects every year. This section should remain blank unless there is a need for reorganization.

No

Is the agency in compliance with S.C. Code Ann. § 2-1-220, which requires submission of certain reports to the Legislative Services Agency for publication online and the State Library? See also S.C. Code Ann. § 60-2-20.

Yes

If not, please explain why.

These responses were submitted for the FY 2020-2021 Accountability Report by the
CLEMSON UNIVERSITY - PSA
Is the agency in compliance with various requirements to transfer its records, including electronic ones, to the Department of Archives and History? See the Public Records Act (S.C. Code Ann. § 20-1-10 through 20-1-180) and the South Carolina Uniform Electronic Transactions Act (S.C. Code Ann. § 26-6-10 through 26-10-210).
Yes
Does the law allow the agency to promulgate regulations?
Yes
Please list the law number(s) which gives the agency the authority to promulgate regulations.
46-9-40; 47-11-150; 47-5-50
Has the agency promulgated any regulations?
Yes
Is the agency in compliance with S.C. Code Ann. § 1-22-120(J), which requires an agency to conduct a formal review of its regulations every five years?
Yes

AGENCY NAME:	CLEMSON PSA		
AGENCY CODE:	P200	SECTION:	045

LIVESTOCK POULTRY HEALTH (<http://www.clemson.edu/lph/>)

The Livestock Poultry Health (LPH) programs protect the health of food animals, other livestock, and companion animals by conducting constant surveillance for diseases that affect both people and animals. LPH provides the diagnostic expertise that allows for treatment and eradication of diseases of domestic animals, inspecting and testing the processing of foods of animal origin, and coordinating state agricultural/animal emergency response as lead agency of Emergency Support Function-17 (ESF-17). A 2015 study reported that animal agriculture contributes \$14.5 billion to South Carolina's overall economy. National Agricultural Statistics Service 2017 data indicate that the direct sales from S.C. farms percentage coming from animal agriculture is 64%. LPH programs protect and monitor the health of all livestock and poultry in the state and are integral to this vital industry's continuation and growth.

Foreign and Emerging Diseases: Rabbit Hemorrhagic Disease Virus type 2 (RHDV2) was identified in the western United States in 2020 and has been found in domestic and feral rabbits. Eleven Western states are now classified as stable-endemic by USDA Veterinary Services (VS). Two states east of the Mississippi River (Florida and Georgia) have reported at least one case. Epidemiology of how the two cases developed in the East is still under investigation. LPH is working with other state agencies (e.g., SC Department of Agriculture (SCDA), SC Department of Natural Resources (SCDNR), United States Department of Agriculture (USDA), etc.) monitoring the RHDV2 situation and are answering public questions.

African Swine Fever (ASF) continues to pose a threat to the U.S. swine industry. Preventing ASF from entering the United States remains a top priority for state and federal animal health officials. LPH is also active in efforts to promote management practices that reduce the likelihood of introduction, assure early detection, and prepare a robust response should highly pathogenic avian influenza (HPAI), ASF, foot and mouth disease (FMD), RHDV2 or any other foreign or emerging diseases threaten S.C. livestock including poultry.

Animal Health Programs (AHP): To improve capability and accurately and quickly trace animal movements during an animal health event, a top priority, electronic tag panel readers were installed at two S.C. livestock markets as a pilot program for cattle traceability. An issue was noted with the livestock market software not recording tag numbers. LPH staff have been working with one livestock market and the software developer to correct the problem. Progress was made in correcting the issue, and once all parties are satisfied, the second market's software will receive updates to correct the problem. We will monitor how both pilot facilities panels work in the upcoming year. A supply of electronic tags for cattle are available to cattle producers and veterinarians through AHP provided at no cost by VS.

AHP worked with the SCDNR and SC Farm Bureau (SCFB) on a bill requiring identification or alternate identification on swine traveling intrastate, which was passed and signed by the governor. In the upcoming year, AHP will work with partners on training, educational handouts, and videos, and update its website for the public.

In FY20-21, AHP personnel made 696 inspections at livestock auction markets, after-hours markets, dealers, farms and miscellaneous sales such as flea markets. These inspections are integral to livestock and poultry disease detection, control and eradication in South Carolina and help ensure access to both domestic and foreign markets for S.C. products.

Secure Food Supply Plans have expanded with growing producer participation in the Secure Pork Supply Plan in addition to those already participating in Secure Milk and Secure Poultry. Preliminary work with the Secure Beef Supply Plan is also underway in South Carolina. Secure Food Supply plans provide opportunity for farmers to help mitigate economic losses and promote business continuity during a high consequence disease event.

Emergency Support Function 17 (ESF-17) Animals and Agriculture: As lead agency for ESF-17, LPH coordinates all agricultural/animal issues under the South Carolina Emergency Operations Plan with assistance from PSA partners Regulatory Services and Clemson Cooperative Extension Service, as well as other agencies and organizations.

LPH participated in state COVID-19 operations with the South Carolina Emergency Programs Division (SCEMP). COVID-19 is not known to be a food animal disease but did affect the animal food industry by disrupting packing plant operations (this also affected plant and other food operations). Producers and the public found delays of up to six months to process their animals. COVID-19 did affect some companion and zoo animals. LPH participated in national public health agency calls, and initially reviewed approval of testing domestic and zoo animals prior to commercial tests becoming available.

AGENCY NAME:	CLEMSON PSA		
AGENCY CODE:	P200	SECTION:	045

LPH continues to work on updating SCEMP plans through ESF-17 for domestic animals during disaster events. LPH staff updated the emergency management website for use by counties and the public.

LPH is participating in a regional functional exercise sponsored by VS for FMD. LPH staff are developing plans if South Carolina had a traceback for a positive animal. The Foreign Animal Disease Southern Agriculture Functional Exercise (FAD SAFE) is scheduled for November 2021.

LPH veterinarians provide leadership for the SC Veterinary Reserve Corps which has 60+ volunteers and is organized under the SC Association of Veterinarians to assist in times of animal emergencies.

Veterinary Diagnostic Center (CVDC): CVDC, the only accredited full service veterinary diagnostic laboratory in the state, completed 84,467 tests and procedures during FY20-21 in performing its animal and food safety diagnostic duties. Of these, 83,160 (over 98%) were related to production animals and regulatory duties; the remaining samples were from companion animals and wildlife. CVDC continued to fully operate during the COVID-19 pandemic and provided timely essential diagnostic services. Additionally, CVDC started offering diagnostic test to detect SARS-CoV-2 in animals. CVDC is a National Animal Health Laboratory member lab as well as an approved National Poultry Improvement Program laboratory.

South Carolina Meat-Poultry Inspection (SCMPID): SCMPID continued to meet all requests for inspections during FY20-21 at state inspected facilities and at federal meat plants inspected under the cross-utilization program despite the challenges presented by COVID-19. During this period, most state inspected facilities services and products were in high demand. SCMPID completed its annual self-assessment with USDA Food Safety Inspection Service and continues to be designated as “at least equal to” the federal meat and poultry inspection program. This review is required by law and ensures a safe meat and poultry supply. The South Carolina program continues to meet or exceed the federal requirements. Department activities included 100% in-person inspection during slaughter operations on almost 2,000 slaughter days that processed 32,580 livestock and more than 1.3 million poultry. The department performed over 44,000 individual inspection procedures during inspection in 71 slaughter and processing facilities served.

CLEMSON EXPERIMENT STATION <http://www.clemson.edu/cafls/research>

As a leading land-grant public research institution, Clemson University highlights its federal grant activities in this report. As in the past, there has been increased focus on integrating the Research and Education missions of the Experiment Station. We continue to highlight the increase in graduate students, many of them advised or co-advised by faculty located at the Research and Education Centers (RECs).

For FY 2020-21, The Clemson Experiment Station has been involved in multiple areas of research. These areas include but are not limited to the following:

Crop Production and Health: Transgenic corn hybrids expressing insecticidal proteins from *Bacillus thuringiensis* (Bt) can help to reduce insect injury and have been widely adopted in stacked arrangements of traits. This diversity of available Bt hybrids in corn makes it necessary to determine the efficacy of these products as well as their impact on target pest biology. Evaluation of different transgenic hybrids expressing Bt toxins were evaluated over multiple planting dates in Florence, SC over a 4-year period. Yield was generally not impacted in early planted trials but late planted trials suffered from high fall armyworm pressure at whorl stages in earworm feeding levels. All Bt traits were more effective than insecticide applications in controlling whorl feeding fall armyworm. Work continues to determine the impact of Bt corn on the biology of target species and specifically on corn earworm pupae development. Pupal weights were generally lower in Bt than non-Bt corn, but this reduction has declined over time which may be due to resistance development.

STEM Program in Agriculture: The focus of this research is to revitalize an interest in agriculture as a career path and ensure secondary school students have the pre-requisite competencies to succeed in college and agricultural careers. Compounding the issue of recruiting and preparing qualified graduates to enter careers in agricultural sciences is the growing demand for workers with STEM. The demand for STEM talent encourages the disbursement of students and workers with STEM competencies across various career paths. It is paramount for STEM-related programs to be on the cutting edge in terms of skills and abilities needed to perform at multiple levels of occupation. We have created awareness and interest in the middle and high school levels for careers in agricultural

AGENCY NAME:	CLEMSON PSA		
AGENCY CODE:	P200	SECTION:	045

sciences. We are also preparing students for success in college, leading to a sustainable supply of well-educated agricultural scientists.

Forested Wetland Ecosystems: Estuaries of the southeastern United States and their surrounding wetlands are coastal transition zones where freshwater rivers meet tidal seawater. As sea levels rise, saltier water moves farther upstream into freshwater wetland areas causing forest mortality. Human changes to the surrounding landscape may amplify the effects of this tidal extension, impacting the resiliency and function of the upper estuarine wetlands. Conversion is related to both changing sea level and associated salt-water intrusion and to human influences (e.g., land use change, coastal development, construction of dams, river dredging, etc.). Forests were managed and maintained during this reporting period in coastal areas to determine carbon (C) and water budgets in a longleaf pine restoration project. Because of limited existing data, this project took an integrated, large-scale approach to research and monitoring to expand our ability to model these processes and apply them to other coastal areas. We assessed the resilience of wetlands to sea level rise by measuring processes controlling wetland elevation. This research measured forest productivity, water cycling and climate sensitivity at high temporal resolution. Clemson researchers found that these wetlands were marginally resilient to sea-level rise. We identified fundamental differences in how resilience is maintained across wetland community types, which have important implications for management activities that aim to restore or conserve resilient systems. We also documented that these tidal wetlands store more C than many coastal wetland types documented throughout the world, including classically defined "blue carbon" wetlands, and they support high rates of annual C sequestration and lateral C export into aquatic environments that can influence critical near-shore and marine energy transformations. Clemson researchers also produced foundational knowledge and mechanistic understanding of forest functioning to aid the development of models that predict the response of forests to disturbances and environmental change. Datasets will quantify the impacts of management on forest productivity and functioning, which helps inform policy decisions that impact management. Measurements provided will help researchers understand the effects of management on water yield from upland pine and how that influences downstream wetland forests.

Impact of Ergot Toxicity in Animal Reproduction: The United States produces approximately 25 billion pounds of beef annually, of which 25-30% are produced in the southeastern region of the United States where production depends heavily on grazing tall fescue. The majority of this tall fescue contains a naturally occurring fungus which produces a toxin that severely reduces animal growth and reproduction. The result is a reduction in the nation's meat supply and an annual impact of approximately \$1 billion for beef and small ruminant production. Research was conducted to evaluate the use of novel, non-ergot alkaloid producing tall fescue compared to traditional toxic tall fescue during critical stages of production to improve animal performance. Over a two-year study, grazing non-toxic tall fescue during the last 1/3 of pregnancy and the first 30 days of lactation improved cow body weight gain but did not alter calf birth weight. Milk production and calf gains were improved when grazing the novel tall fescue varieties in early lactation and improved gains were maintained until 205 day weaning weights were collected. Providing non-toxic tall fescue during targeted critical periods of the production cycle can help to offset the negative impacts of a widespread and detrimental forage species across the southeastern region of the United States.

CLEMSON COOPERATIVE EXTENSION SERVICE (www.clemson.edu/extension)

Clemson Cooperative Extension Service is proud to serve the citizens of South Carolina in the areas of agronomic crops, agribusiness, agricultural education, food systems and safety, forestry and natural resources, horticulture, livestock and forages, rural health and nutrition, and 4-H youth development. During FY 20-21, Clemson Cooperative Extension Service directly served 214,219 people in 7,386 workshops that were conducted either face-to-face or virtually. Furthermore, we had 22,928,181 indirect contacts. While all efforts undertaken by Clemson Cooperative Extension Service staff were impactful, we will highlight a few.

4-H Youth Development: "Clover in the Classroom" is a 4-H school enrichment program that is a sequence of learning experiences taught by Clemson Cooperative Extension Service 4-H agents in conjunction with

AGENCY NAME:	CLEMSON PSA		
AGENCY CODE:	P200	SECTION:	045

schoolteachers during regular school hours. A need was identified in Dillon and Marlboro counties for special education classes that were overlooked in special programming. The Clemson Cooperative Extension Service 4-H Agent raised funds to create and distribute holiday thematic kits for 51 elementary school special education students in the two counties. The kits contained activities ranging from STEM, fine motor skills, and holiday-themed writing prompts. Teachers who received the kits stated that the kits helped their students achieve grade-level standards while building their fine motor skills.

Agribusiness: The “Feeding Innovations” program works to “increase access to healthy food while supporting the development of strong, local entrepreneurs and community-based business.” The Clemson Cooperative Extension Service Agribusiness Team conducts the ten-week entrepreneurial training program. The program culminates with businesses pitching their business plans, and three businesses are selected to receive seed capital. In FY 20-21, two Feeding Innovations programs were conducted that accommodated 50 entrepreneurs, with \$95,000 in seed capital awarded to six participants.

Agronomic Crops: *Palmer amaranth*, also known as pigweed, is resistant to many herbicides used for corn and soybean production. In 2017, a new herbicide called Dicamba was introduced and has proven successful in controlling pigweed. However, in order to utilize Dicamba, a producer must go through a special pesticide training program. While virtual programming was utilized by some producers for Dicamba training, other producers found virtual training to be a barrier. Therefore, in-person and on-farm trainings for Dicamba were conducted, which allowed for the treatment of 6,000-8,000 acres of soybean and over 400 acres of cotton.

Food Systems & Safety: Food donations increased during the COVID-19 pandemic. However, food handled by consumers and volunteers with minimal food safety training and resources can cause an increase in food mishandling and risk of foodborne illness. Therefore, Clemson Cooperative Extension Service Food Systems and Safety Agents delivered the “Food Safety for Donated Foods” webinar to help reduce the risk of foodborne illness from donated foods.

Forestry & Natural Resources: Irrigation uses 70-75% of the global freshwater supply. In South Carolina, after thermoelectric power, the three major water use sectors are municipal, industrial, and agricultural. Increasing populations and erratic precipitation causes an increased reliance on irrigation to produce needed food and fiber. A Clemson Cooperative Extension Service Water Resources Agent assisted with the development and pilot test of a program in association with the Department of Agricultural Sciences (AS) to determine the uniformity of water output from irrigation systems. Distribution of water evenly across the field will reduce the occurrence of overwatering in some areas and underwatering in other areas, which affects yields. Also, too much water can cause runoff or deep percolation, resulting in erosion, and fertilizer and pesticide leaching. The improved efficiency due to the project can reduce the amount of water applied, saving 27,154 gallons per inch of water per acre and an estimated \$7.00 per acre in irrigation cost.

Horticulture: Fruit and vegetable growers commonly grow crops on beds covered with plastic mulch and are irrigated via drip irrigation. The preferred method of fertilizing plants during the growing season is by injecting fertilizer through the drip system (known as fertigation). While fertigation is generally an efficient means of fertilizing, calculating the exact amount of fertilizer to inject can be tricky, leading to over/under application, affecting crop health, yield potential, and profit margins. The Clemson Drip Fertigation Calculator was created through collaboration between Clemson Cooperative Extension Service Horticulture and Precision Agriculture teams. This online tool allows growers to select the fertilizer, nutrient rate, area to be fertigated, and then calculates the amount of fertilizer (per week or per day) to supply the necessary nutrients. Since its creation in late 2020, the fertigation calculator has been accessed 1,096 times. About 80% of views were from outside of South Carolina, suggesting there was a need for this program nationwide and internationally. Numerous S.C. farmers have reported successful results from using the calculator and have seen improvements in their fields.

Livestock and Forages: Feeder cattle producers try to maximize the value of the calves they market. Group marketing efforts often provide opportunities for farmers to improve market price. Clemson Cooperative Extension Service coordinated an off-farm feeder cattle sale in the Chester/York/Fairfield County area. Nine area farmers

AGENCY NAME:	CLEMSON PSA		
AGENCY CODE:	P200	SECTION:	045

marketed 632 head of feeder calves (8 loads, 2 partial loads) using this alternative marketing option. Marketing feeder calves off-farm resulted in \$0.18 per pound higher price when compared to traditional auction markets. This resulted in \$126 dollars per head of additional revenue to area farmers. Marketing feeder calves using this alternative generated a total of \$79,630 increased revenue, an average of \$8,848 per farm.

Rural Health and Nutrition: According to the Robert Wood Johnson County health rankings, Lee County has adult obesity of over 40% and is a rural county with limited food accessibility. Many residents live in food deserts, which means they have limited access to quality, affordable, and nutritious food. In addition to having poor access, residents of impoverished or deprived areas frequently face higher prices for food and other necessities. Poor education and limited health care services in conjunction with high prices for fresh produce and other healthy food may result in poor diets and adverse health outcomes for these areas. FoodShare Lee County, run by Mt. Calvary Baptist Missionary Church in Bishopville, is now viable and offers low-cost fruits and vegetables to all Lee County residents. Mt. Calvary Baptist Missionary Church is the first faith-based organization in South Carolina to become a certified SNAP/EBT vendor. This food model requires a county-level partner, which Clemson Cooperative Extension Service Rural Health agents have been an integral part of this collaboration. This model allows those who purchase low-cost, high-quality produce to retain purchasing power and maintain dignity. As of today, FoodShare Lee County has distributed over 2,000 fresh food boxes, which is approximately 2.5 tons lbs of fresh fruits and vegetables. These fresh food boxes have continued to be distributed during the COVID-19 pandemic with all safety protocols in place. In addition, FoodShare Lee County has secured over \$50,000 in grant funds to construct an additional building to increase capacity.

REGULATORY AND PUBLIC SERVICE PROGRAMS (RPSP) (<http://www.clemson.edu/public/regulatory/index.html>)

RPSP Programs protects the state from exotic and invasive species, ensures that pesticides are used safely, regulates the structural pest control industry, verifies that fertilizer and lime meet standards and labeled guarantees, conducts programs for seed and organic certification, provides diagnosis of plant pests, and ensures readiness to respond to a catastrophic event impacting the state's agriculture. In addition, the division provides USDA organic certification services to livestock, crop and processing operations in South Carolina, and our Agricultural Services Lab provides testing and analysis for soil fertility, animal feed and forages, irrigation water and more.

The division protects and enhances agriculture and natural resources in South Carolina and protects human health through the enforcement of state and federal mandated laws, and regulations that are written and approved by the legislature of South Carolina.

Agricultural Service Laboratory (ASL): ASL exists to provide information and analytical testing for soil, plant tissue, feed and forage, animal waste, irrigation water, compost, and research samples. Individual clients, homeowners, farmers, commercial dealers, Extension Agents, Extension Specialists, and researchers may submit samples to the laboratory. The mission of the ASL is accomplished by the following:

- Operating analytical laboratory sections
- Ensuring a high level of analytical precision and accuracy by implementing quality control and updated technology
- Participating in national and regional sample exchange programs
- Maintaining a record keeping, data processing, and reporting section
- Reporting timely results to clients
- Providing clients with lime and fertilizer recommendations based on soil tests. Assisting clients directly or finding resources to assist them

Department of Fertilizer, Regulatory and Certification Services (FRCS): FRCS includes several regulatory and non-regulatory programs that are designed to provide consumer protection as well as value added services to the S.C. agricultural and plant industries. The Fertilizer Regulatory Program enforces Section 46-25-10 of the SC Code of Laws pertaining to the manufacturing and selling of all commercial fertilizers in South Carolina. The program

AGENCY NAME:	CLEMSON PSA		
AGENCY CODE:	P200	SECTION:	045

registers and tests fertilizer products to ensure they meet label standards. The Seed and Plant Certification Program serves as a third-party inspection service for crop, turfgrass and other plant varieties in order to provide the highest quality seed and plant material available to the marketplace. In addition, the Solar Habitat Certification program is a collaborative program with Clemson Cooperative Extension Service and SCDNR that provides a framework to encourage the planting and maintenance of pollinator habitats at solar farms. FRCS also houses the North American Invasive Species Management Association (NAISMA) Weed-Free Forage Inspection Program that inspects forages and certifies them as noxious weed free.

Department of Pesticide Regulation (DPR): DPR is the state's lead agency charged with regulating the registration, distribution, sale, and use of pesticides in South Carolina.

The DPR provides the following services:

- Initial certification and licensing for pesticide use to private and professional businesses and agricultural operations through state and federal laws
- Cooperates with the U.S. Environmental Protection Agency (EPA) to ensure that pesticides are used in a lawful manner that minimizes risk to the environment and human health
- Pesticide Investigation and routine inspection programs that consist of 14 field investigators and 2 program managers located throughout the state of South Carolina
- Partnerships with other state and federal entities including SCDA, SCDNR, and Clemson Cooperative Extension Service to provide regulation through education

DPR Investigational Program Outputs and Activities:

- Counterfeit Pesticide Manufacturing and Sales Surveillance and Response
 - DPR continues to collaborate with other State Lead Agencies (SLA) and U.S. EPA to stop the selling of counterfeit pesticide products under registered brand and trade names. Fraudulent businesses operate from overseas manufacturing products that look exactly like the brand name products. Occasionally these fraudulent products have the same active ingredient and sometimes they do not. Lab analysis has proven that the active ingredients listed on labels are not present in many of these products.
- Presented to the State Federal Insecticide, Fungicide, Rodenticide Act (FIFRA) Issues Research and Evaluation Group (SFIREG) and spoke on the judicious use of second-generation anti-coagulant rodenticide baits (SGA).

Environmental Protection: In late 2019, the Town of Kiawah Island wildlife biologists started finding dead bobcats on the island. Laboratory tissue analysis determined that the cause of death was due to secondary exposure from SGA. By July 2020, 3 adult bobcats died from secondary SGA exposure. Kiawah Island is well known for the bobcat population and other wildlife, and town officials feared that the bobcat population was in danger of being eliminated. In July 2020, town officials contacted DPR and asked for help. DPR immediately began working with the South Carolina Pest Control Association to educate the pest control industry about this issue and asked companies to voluntarily remove SGAs from the island. Clemson DPR collaborated with Clemson Cooperative Extension Service to host two rodent control Integrated Pest Management (IPM) training programs for the pest control industry and also developed a Best Management Practices (BMP) for Rodent Control guidebook. Approximately 45 pest control companies participated in the training programs. DPR Field Investigators in the Charleston area completed 53 targeted compliance inspections with pest control companies that provide rodent control services on Kiawah Island. Also, DPR administered a survey of the pest industry showing that SGA use on Kiawah Island has declined from over 1,550 clients in early 2020 to fewer than 10 in late 2020, a reduction of over 99% from survey participants. Finally, as part of our initial monitoring effort, DPR worked with SCDNR to harvest and test SGA levels in indicator species including opossums and raccoons. The findings from this effort show a decline in SGA levels that is consistent with the implementation of the voluntary SGA removal efforts which began in August 2020.

AGENCY NAME:	CLEMSON PSA		
AGENCY CODE:	P200	SECTION:	045

Because this issue is ongoing, DPR has developed an SGA Rodenticide Task Force to continue monitoring, research, and education efforts to protect wildlife on Kiawah Island. The task force includes Clemson regulatory, research, and Extension specialists along with SC DNR wildlife biologists and Kiawah Island wildlife biologists. A four-year graduate research project with the Clemson Department of Forestry and Environmental Conservation (FEC) is being funded and will include routine SGA monitoring efforts on Kiawah Island. Also, DPR has implemented a statewide regulatory compliance program to monitor SGA use by the industry and encourage IPM practices across South Carolina. Results of these efforts are proving to be very successful with the town biologists finding two bobcat dens in spring of 2021 with 5 newborn bobcat kittens. Also, no dead bobcats have been found in 2021, which indicates a successful response.

Pesticide Product Registrations: During the COVID-19 pandemic, several registrants of antimicrobial materials and substances to combat COVID-19 petitioned DPR for Section 18 Emergency Exemptions to register their products in South Carolina. Three specific products were reviewed by the Director and Regulatory Services staff, and meetings were held with personnel from each company seeking special registrations. It was determined that none of these products could be registered in South Carolina without submission of additional information required by DPR. To date, none of this additional requested information has been submitted, so none of the Section 18 requests have been approved. One of the registrants had been successful in getting several states to grant an Emergency Exemption, but the U.S. Environmental Protection Agency (EPA) has since cancelled those registrations due to insufficient proof of efficacy against the SARS-CoV-2 virus. Clemson's diligence in reviewing these applications and exercising caution in granting special registrations to products that had not received a normal Section 3 EPA registration for any antimicrobial purpose prevented the use of at least one product that was found later to have little or no efficacy against this deadly virus.

Collaboration with the College of Agriculture, Forestry, and Life Sciences: Regulatory Services staff taught a senior/graduate course in the Department of Plant and Environmental Sciences during the spring 2021 semester focused on regulatory issues and public policy. Many RPSP professional staff assisted with lectures that gave students a more complete understanding of the nature and scope of positive impacts the regulatory profession continues to have in South Carolina and the United States. This was a very popular course, with over 30 students in attendance. In addition, the Director of RPSP served on a PhD graduate committee in FEC, a MS graduate committee in AS, and presented several additional guest lectures in courses, including the Issues and Ethics in Agriculture course taught by Dr. Kirby Player.

Department of Plant Industry (DPI): DPI houses several programs all with the same goal: Protecting and serving the agricultural and natural resources industries of South Carolina. Providing plant pest and disease inspection and monitoring programs protect S.C.'s agricultural and horticultural industries while also keeping our forests and natural areas safe from invasive plant pests. DPI strives to prevent the introduction of new plant pests into South Carolina and the spread of existing plant pests to non-infested locations through inspections, plant pest surveys, quarantines, and control and eradication programs. Movement of nursery stock is regulated by every state and foreign country. Under S.C. law, any person engaged in the production or collection of nursery stock for sale or distribution must be a licensed nurseryman. DPI works closely with the nursery industry, USDA, and other state agencies to ensure that state and federal laws and regulations are enforced. The Honeybee Protection program protects S.C.'s agricultural resources and natural ecosystems from the introduction and spread of plant and honeybee pests and invasive species. DPI also facilitates national and international trade by offering inspection and certification services required for shipping plant material into other states and countries. South Carolina farms and processing operations benefit from our USDA Organic Certification program. The Clemson University Plant and Pest Diagnostic Clinic is a multi-disciplinary program which provides diagnoses and management recommendations for plant and turf problems, which include diseases, nematodes, weeds, environmental issues, nutritional deficiencies and insect pests of plants. We also identify insects infesting structures, humans, pets and livestock.

The Clemson Plant and Pest Diagnostic Clinic (PPDC) receives samples from the Clemson Cooperative Extension Service offices, homeowners, growers, landscapers, turfgrass management professionals and researchers. Our diagnosticians work closely with Clemson University specialists to provide management

AGENCY NAME:	CLEMSON PSA		
AGENCY CODE:	P200	SECTION:	045

recommendations to help lower the threat of plant insects and diseases to our agricultural and natural resources. The PPDC also helps to detect and document new plant diseases and pests of regulatory concern in South Carolina.

Asian Longhorned Beetle (ALB): The ALB (*Anoplophora glabripennis*) is a destructive wood boring beetle known to cause severe damage to several tree species of economic importance in South Carolina. This beetle is native to China and was first discovered in the United States in 1996 infesting trees in and around New York City. It now has been found in six states (NY, IL, NJ, MA, OH, SC). The most recent, and very extensive, infestation was found in Charleston County, South Carolina in May 2020. It is believed that the S.C. infestation resulted from either firewood or nursery stock being brought into the county from somewhere in the United States, and not imported directly from China.

On May 29, 2020 a homeowner in the Stono Ferry Estates neighborhood of Hollywood, South Carolina contacted DPI to report a suspect ALB. That same day, a DPI inspector arrived at the homeowner's property to collect the sample. Clemson University's Plant and Pest Diagnostic Clinic tentatively identified the specimen as ALB and on June 4, APHIS' National Identification Services confirmed it.

In response to this threat, a 76 square mile quarantine was implemented by DPI, in cooperation with the USDA. The quarantine is helping stop the spread of these beetles from the infested areas in Charleston County to other areas in S.C. as well as to regions outside the state. This quarantine is consistent with those that already have been put into place in other states which have been successful in stopping the spread of the beetle. Clemson and USDA regulatory officials who have been working in Charleston County this year found the people residing in the infested areas as well as the local businesses there to be very cooperative and willing to assist in the eradication efforts and many are aware of the imminent quarantine that will be necessary. In addition, Clemson Cooperative Extension Service has helped with much of the outreach and education efforts to help citizens, landowners, and the forestry industry understand the parameters of the quarantine and how they can help stop the spread of this devastating insect pest.

Since June 2020, the Department of Plant Industry (DPI) has led the eradication efforts for this pest. By the end of June 2021, a total of 46,316 trees had been surveyed covering 7,615.90 grid survey acres. Field surveys have found 4,959 trees infested with ALB and 2,176 infested trees have been removed as of July 2021.

Invasive Species: We secured multiple invasive species grants totaling in the hundreds of thousands of dollars, headlined by a \$190,000 cogongrass grant to conduct survey, outreach, and eradication efforts in South Carolina. Other grant funded surveys include the monitoring of invasive pests that impact forestry, nursery, and agricultural industries.

Office of the State Entomologist: The Office of the State Entomologist was established as a separate position within Regulatory Services in 2019 and underwent further development in 2020 and 2021. The responsibilities of this office include collaboration with the Clemson Cooperative Extension Service on issues related to regulatory issues and pest insects in South Carolina, assistance with pollinator protection issues where pesticides are concerned, identification and confirmation of pest insects that have quarantine or economic importance within the state, preparation of pesticide Emergency Exemptions and Special Local Needs requests sent to the U.S. EPA, assisting the RPSP Director in preparing and declaring state quarantines for exotic and invasive insect pests, reviewing data related to insects of economic importance, participation on the SC Emergency Operations Center agricultural response team, and other duties where expertise in regulatory entomology are necessary.

AGENCY NAME:

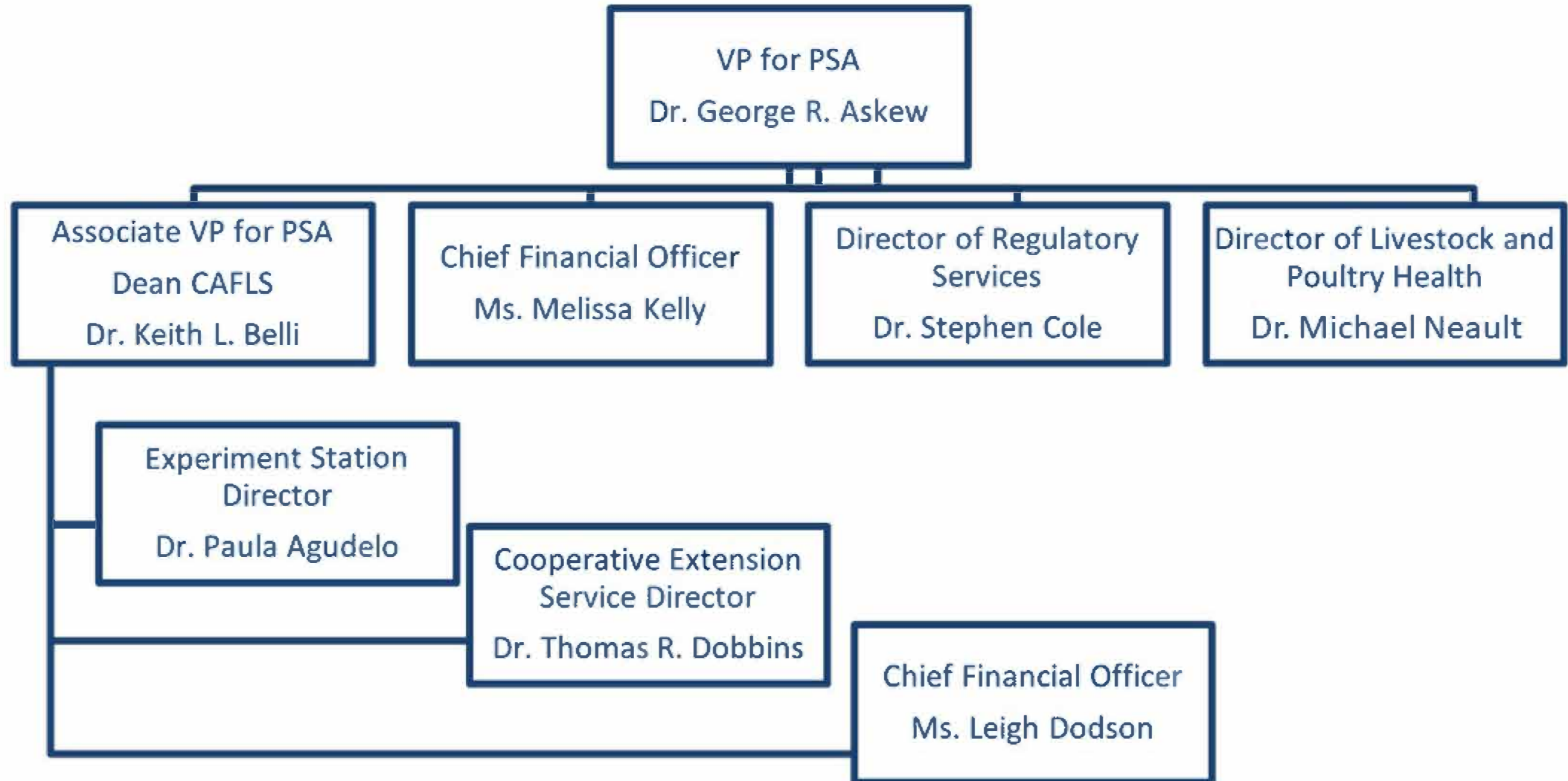
CLEMSON PSA

AGENCY CODE:

P200

SECTION:

045



FY 2020-2021 Agency Accountability Report
FY2020-21 Strategic Plan Results:

These responses were submitted for the FY 2020-2021 Accountability Report by the
CLEMSON UNIVERSITY - PSA

Goal The Clemson Experiment Station aims to identify critical issues and find solutions through research that support South Carolina's agriculture and forest industries.

Strategy 1.1

Statewide Enterprise Objective

Enhance research prominence in focus areas that maintain and support the growth of South Carolina's agriculture and forest industries.

Education, Training, and Human Development

Measure Number	Description	Base	Target	Actual	Value Type	Desired Outcome	Time Applicable	Calculation Method	Data Source	Data Location	Primary Stakeholder	Stakeholder Need Satisfied	State Funded Program Number Responsible	Notes
1.1.1	The number of research proposals and funding requests submitted to granting agencies	477	250	397	Count	equal to or greater than	State Fiscal Year (July 1 - June 30).	Total number count	INFO-ED	Clemson Server	Stakeholders providing input for external grant submissions include commodity groups (i.e. SC Soybean Board), producer organizations (i.e. Farm Bureau) and individual producers.	Individual grant submissions are typically defined by input from multiple sources of stakeholders.	3004.000000.000	0
1.1.2	The number of research proposal funded extramurally	191	150	166	Count	equal to or greater than	State Fiscal Year (July 1 - June 30).	Total number count	INFO-ED	Clemson Server	Scientific community; Citizens of SC	Basic research that identifies potential solutions to agricultural and forest industries challenges	3004.000000.000	0
1.1.3	The number of technical contributions related to research	121	90	106	Count	equal to or greater than	State Fiscal Year (July 1 - June 30).	Total number count	Experiment Station Data	Clemson Server; Experiment Station Office	Scientific community; Citizens of SC	Results of research disseminated to the scientific community for continued investigation and the transfer of technology to agricultural and forest industries.	3004.000000.000	0

These responses were submitted for the FY 2020-2021 Accountability Report by the														
CLEMSON UNIVERSITY - PSA														
Goal		The Clemson Experiment Station aims to identify critical issues and find solutions through research that support South Carolina's agriculture and forest industries.												
Strategy	1.2	Statewide Enterprise Objective												
Strengthen applied research through connections between Clemson University scientists and growers.										Education, Training, and Human Development				
Measure Number	Description	Base	Target	Actual	Value Type	Desired Outcome	Time Applicable	Calculation Method	Data Source	Data Location	Primary Stakeholder	Stakeholder Need Satisfied	State Funded Budget Program Number Responsible	Notes
1.2.1	Research proposals that respond to the needs of commodity boards	58	60	48	Count	equal to or greater than	State Fiscal Year (July 1 - June 30).	Total number count	INFO-ED	Clemson Server	Commodity boards are elected by South Carolina producers.	Crop specific commodity boards define research needs annually and calls for research proposals to address those needs.	3004.000000.000	0

These responses were submitted for the FY 2020-2021 Accountability Report by the														
CLEMSON UNIVERSITY - PSA														
Goal The Clemson Cooperative Extension Service will improve the economy, environment, and well-being of South Carolinians through the delivery of unbiased research-based information and education.														
Strategy 2.2										Statewide Enterprise Objective				
Agribusiness and Agricultural Workforce Development (Agribusiness)										Education, Training, and Human Development				
Measure Number	Description	Base	Target	Actual	Value Type	Desired Outcome	Time Applicable	Calculation Method	Data Source	Data Location	Primary Stakeholder	Stakeholder Need Satisfied	State Funded Budget Program Number Responsible	Notes
2.2.1	Number of people served through workshops, one-on-one meetings, online resources and other media outlets	180126	200000	318646	Count	equal to or greater than	State Fiscal Year (July 1 - June 30).	# people served through direct and indirect methods.	Clemson University Management Information System (CUMIS)	Clemson Extension Office	Agricultural business entities	Education of agricultural business entities to maintain or expand operations or to further develop the ag workforce	3504.000000.000	0
2.2.2	Percentage of people reporting a gain in knowledge from workshops	99%	75%	100%	Percent	equal to or greater than	State Fiscal Year (July 1 - June 30).	# of people that reported a gain in knowledge as a result of the workshops.	Clemson University Management Information System (CUMIS)	Clemson Extension Office	Agricultural business entities	Change in knowledge to futher agricultural business entities	3504.000000.000	0

These responses were submitted for the FY 2020-2021 Accountability Report by the														
CLEMSON UNIVERSITY - PSA														
Goal The Clemson Cooperative Extension Service will improve the economy, environment, and well-being of South Carolinians through the delivery of unbiased research-based information and education.														
Strategy 2.3										Statewide Enterprise Objective				
Conserve and protect all natural resources throughout South Carolina through education and implementation of best management practices (Environmental and Natural Resources Conservation)										Education, Training, and Human Development				
Measure Number	Description	Base	Target	Actual	Value Type	Desired Outcome	Time Applicable	Calculation Method	Data Source	Data Location	Primary Stakeholder	Stakeholder Need Satisfied	State Funded Budget Program Number Responsible	Notes
2.3.1	Percent of landowners, homeowners, land managers, biologists, engineers, water resources managers and private citizens utilizing practices taught during programs and workshops.	62%	50%	62%	Percent	equal to or greater than	State Fiscal Year (July 1 - June 30).	# of participants reporting that they implement knowledge divided by number of participants	Clemson University Management Information System (CUMIS)	Clemson Extension Office	Landowners	Increase knowledge to protect and conserve natural resources	3504.000000.000	0
2.3.2	Number of acres owned/managed potentially impacted by forestry and wildlife workshops and programs and acres impacted by Master Naturalist programs	264913	150000	1724393	Count	equal to or greater than	State Fiscal Year (July 1 - June 30).	# of acres reported by program attendees and volunteers	CUMIS and Master Naturalist Volunteers	Clemson Extension Office	Natural resources	On-the-ground conservation of natural resources	3504.000000.000	0

These responses were submitted for the FY 2020-2021 Accountability Report by the														
CLEMSON UNIVERSITY - PSA														
Goal	The Clemson Cooperative Extension Service will improve the economy, environment, and well-being of South Carolinians through the delivery of unbiased research-based information and education.													
Strategy	2.4									Statewide Enterprise Objective				
Provide training on the safe preparation, production and handling of food while educating citizens on wise nutritional choices that leads to improved health (Food Safety and Nutrition)										Education, Training, and Human Development				
Measure Number	Description	Base	Target	Actual	Value Type	Desired Outcome	Time Applicable	Calculation Method	Data Source	Data Location	Primary Stakeholder	Stakeholder Need Satisfied	State Funded Budget Program Number Responsible	Notes
2.4.1	Estimated savings from potentially preventing food-borne illnesses in restaurants.	\$636,480.00	\$250,000.00	\$0.00	Dollar Amount	equal to or greater than	State Fiscal Year (July 1 - June 30).	# establishments represented in programs teaching safe food preparation and handlings programs (from CUMIS) * \$6,630	Clemson University Management Information System (CUMIS)	Clemson Extension Office	Resturants and food consumers	Train restaurant and food workers in safe handling practices to protect food consumers from food-borne illnesses	3504.000000.000	Due to federal regulations, the food safety program cannot be taught online. Therefore, no classes were taught this FY due to COVID restrictions.
2.4.2	Improve the quality of life for South Carolinians through increased physical and mental health in 5 rural counties.	1712	4000	5823	Count	equal to or greater than	State Fiscal Year (July 1 - June 30).	# people improving life and improved lifestyles through attendance at health and nutrition programs throughout SC	Clemson University Management Information System (CUMIS)	Clemson Extension Office	Rural county residents in SC	Improved quality of life through education on lifestyle and food habits	3504.000000.000	0
			</											

These responses were submitted for the FY 2020-2021 Accountability Report by the														
CLEMSON UNIVERSITY - PSA														
Goal		The Clemson Cooperative Extension Service will improve the economy, environment, and well-being of South Carolinians through the delivery of unbiased research-based information and education.												
Strategy	2.5	Statewide Enterprise Objective												
Empower youth to grow into healthy and productive members of society through hands-on, inclusive and mentored learning opportunities (Youth Development and Families)										Education, Training, and Human Development				
Measure Number	Description	Base	Target	Actual	Value Type	Desired Outcome	Time Applicable	Calculation Method	Data Source	Data Location	Primary Stakeholder	Stakeholder Need Satisfied	State Funded Budget Program Number Responsible	Notes
2.5.1	Potential future volunteer contributions (in dollars) by current 4-H members (projected 15 years into the future).	\$35,600,000.00	\$29,000,000.00	\$17,026,854.00	Dollar Amount	equal to or greater than	Other	(# 4-H members * Volunteer Hourly rate) * (Avg # Volunteer Hours for 4-H by adults) projected forward 15 years with an inflation rate of 2.5%	ES-237	USDA-NIFA	Community members throughout SC	Community residents benefit through learned sense of volunteer and service by participation in 4-H programs and the future value of the learned service	3504.000000.000	0
2.5.2	Percentage of 4-H members engaged in citizenship and community service programs.	21%	25%	39%	Percent	equal to or greater than	Other	Percentage of 4-H participants in citizenship programs divided by total 4-H participation	ES-237	USDA-NIFA	Community members throughout SC	Community residents benefits from increased youth participation in community projects and leadership.	3504.000000.000	0

These responses were submitted for the FY 2020-2021 Accountability Report by the														
CLEMSON UNIVERSITY - PSA														
Goal Clemson Livestock Poultry Health will ensure the continued health of the livestock and poultry industry, ensure safe, wholesome, properly labeled meat and poultry products, and protect the public health of the citizens of South Carolina.														
Strategy 3.1										Statewide Enterprise Objective				
Enforce state and federal animal health laws and regulations by monitoring interstate movement of animals, performing inspections at livestock auction markets, and developing and expanding livestock traceability capability for livestock disease prevention, control, surveillance and eradication programs to protect animal and public health.										Maintaining Safety, Integrity and Security				
Measure Number	Description	Base	Target	Actual	Value Type	Desired Outcome	Time Applicable	Calculation Method	Data Source	Data Location	Primary Stakeholder	Stakeholder Need Satisfied	State Funded Budget Program Number Responsible	Notes
3.1.1	Total number of new premises registered by Livestock Poultry Health	8525	8625	10452	Count	equal to or greater than	State Fiscal Year (July 1 - June 30).	Total premises registered	LPH reports	Clemson Livestock Poultry Health Office	SC livestock and poultry producers.	Improves traceability of active livestock and poultry premises to help resolve animal disease outbreak events.	2500.010000.000; 2501.050000.000	0
3.1.2	Meet disease testing and trace back requirements for continued "disease free" status as specified in the code of federal regulations	100%	100%	100%	Percent Complete	Complete	State Fiscal Year (July 1 - June 30).	Disease testing requirements met to maintain status	LPH reports	Clemson Livestock Poultry Health Office	SC livestock and poultry producers.	Maintaining state disease-free status allows livestock and poultry producers to export products for national or international sales without (or with less) regulatory restrictions.	2500.010000.000; 2501.050000.000	0
3.1.3	Number of inspections and investigations conducted at locations including livestock markets, exhibitions, sales, and on livestock farms throughout South Carolina	908	450	696	Count	equal to or greater than	State Fiscal Year (July 1 - June 30).	Number of inspections, farm visits, and investigations	LPH reports	Clemson Livestock Poultry Health Office	SC livestock markets, and SC and interstate livestock producers.	Maintaining state disease-free status allows livestock and poultry producers to export products for national or international sales without (or with less) regulatory restrictions.	2500.010000.000; 2501.050000.000	0

These responses were submitted for the FY 2020-2021 Accountability Report by the CLEMSON UNIVERSITY - PSA														
Goal Clemson Livestock Poultry Health will ensure the continued health of the livestock and poultry industry, ensure safe, wholesome, properly labeled meat and poultry products, and protect the public health of the citizens of South Carolina.														
Strategy	3.2									Statewide Enterprise Objective				
Protect the health of consumers by providing a comprehensive inspection service to ensure safe, properly labeled, wholesome meat and poultry products through inspections and regulation in state and federal cross-utilization meat and poultry plants.										Maintaining Safety, Integrity and Security				
Measure Number	Description	Base	Target	Actual	Value Type	Desired Outcome	Time Applicable	Calculation Method	Data Source	Data Location	Primary Stakeholder	Stakeholder Need Satisfied	State Funded Budget Program Number Responsible	Notes
3.2.1	Operate under "at least equal to" status from USDA Food Safety Inspection Service (FSIS)	100%	100%	100%	Percent Complete	Complete	State Fiscal Year (July 1 - June 30).	On-site triennial review by FSIS and desk review each of the two years in between	FSIS designation	FSIS and Clemson Livestock Poultry Health Office	Livestock and poultry slaughter and processing plants	Required under the Federal Meat and the Federal Poultry Inspection Act to operate as state inspected facility.	2500.010000.000; 2501.050000.000	0
3.2.2	Percent of permitted establishments with two in-depth reviews completed	100%	100%	100%	Percent	Maintain	State Fiscal Year (July 1 - June 30).	% permitted establishments with two in-depth reviews completed	SCMPID reports	SC livestock and poultry slaughter and processing plants and Clemson Livestock Poultry Health Office	Livestock and poultry slaughter and processing plants	Allows state inspected facilities to maintain "at least equal to" status required by the USDA FSIS.	2500.010000.000; 2501.050000.000	0
3.2.3	Percent of inspections of meat and poultry plants and HACCP and SSOP records by inspector in charge	100%	100%	100%	Percent	Maintain	State Fiscal Year (July 1 - June 30).	% daily inspection of all slaughter meat and poultry plants and records, when operating. In-depth reviews of meat and poultry plants and HACCP and SSOP records by inspectors.	LPH inspection reports	USDA-PHIS	Livestock and poultry slaughter and processing plants	Required under the Federal Meat and the Federal Poultry Inspection Act to operate as state inspected facility.	2500.010000.000; 2501.050000.000	0

These responses were submitted for the FY 2020-2021 Accountability Report by the														
CLEMSON UNIVERSITY - PSA														
Goal Clemson Livestock Poultry Health will ensure the continued health of the livestock and poultry industry, ensure safe, wholesome, properly labeled meat and poultry products, and protect the public health of the citizens of South Carolina.														
Strategy	3.3										Statewide Enterprise Objective			
Provide accurate and timely veterinary diagnostic and surveillance testing for early detection of disease, thus improving response and mitigating economic losses in livestock and poultry industry sectors.											Maintaining Safety, Integrity and Security			
Measure Number	Description	Base	Target	Actual	Value Type	Desired Outcome	Time Applicable	Calculation Method	Data Source	Data Location	Primary Stakeholder	Stakeholder Need Satisfied	State Funded Budget Program Number Responsible	Notes
3.3.1	Pass rate of National Veterinary Services Laboratories (NVSL) proficiency tests for procedures performed in Clemson Veterinary Diagnostic Center for which NVSL monitors test performance.	100%	100%	100%	Percent	Maintain	State Fiscal Year (July 1 - June 30).	Final pass rate of NVSL proficiency tests for procedures performed in Clemson Veterinary Diagnostic Center for which NVSL monitors test performance. Meet NVSL accreditation standards and criteria for technicians to be proficiency certified.	NVSL test results	NAHLN Portal and Clemson Livestock Poultry Health Office	SC veterinarians, animal owners, and state and federal inspected livestock and poultry slaughter and processing plants, and the general public.	Accurate results for samples submitted to laboratory diagnosing animal pathogens.	2500.010000.000; 2501.050000.000	0
3.3.2	Maintain ISO 17025 accreditation for Clemson Veterinary Diagnostic Center	100%	100%	100%	Percent Complete	Complete	State Fiscal Year (July 1 - June 30).	ISO 17025:2005 Accredited	Accrediting bodies	Clemson Livestock Poultry Health Office	SC veterinarians, animal owners, and state and federal inspected livestock and poultry slaughter and processing plants, and the general public.	Maintaining quality of diagnostic testing.	2500.010000.000; 2501.050000.000	0
3.3.3	Number of diagnostic procedures performed	93849	80000	84467	Count	equal to or greater than	State Fiscal Year (July 1 - June 30).	Total number of diagnostic procedures to accomplish mission and serve SC veterinarians and livestock and poultry producers.	LPH reports	Clemson Livestock Poultry Health Office	SC veterinarians, animal owners, and state and federal inspected livestock and poultry slaughter and processing plants, and the general public.	Diagnostic testing to detect animal and foodborne pathogens.	2500.010000.000; 2501.050000.000	0

These responses were submitted for the FY 2020-2021 Accountability Report by the														
CLEMSON UNIVERSITY - PSA														
3.3.4	Percent of diagnostic procedures performed that are regulatory/production animal related	99%	90%	99%	Percent	equal to or greater than	State Fiscal Year (July 1 - June 30).	Percentage of diagnostic procedures that are regulatory/production animal related diagnostics directly related to primary mission serving SC veterinarians and livestock and poultry producers.	LPH reports	Clemson Livestock Poultry Health Office	SC veterinarians, animal owners, and state and federal inspected livestock and poultry slaughter and processing plants, and the general public.	Regulatory testing to detect animal and foodborne pathogens to protect the food supply and public health.	2500.010000.000; 2501.050000.000	0

These responses were submitted for the FY 2020-2021 Accountability Report by the														
CLEMSON UNIVERSITY - PSA														
Goal Regulatory Services protects the citizens of South Carolina and the environment by implementing legislatively mandated regulatory programs and by providing other essential programs and services for agriculture and related sectors and for homeowners.														
Strategy 4.1										Statewide Enterprise Objective				
Ensure the safe use of pesticides to protect South Carolina's public health, natural resources and environment.										Maintaining Safety, Integrity and Security				
Measure Number	Description	Base	Target	Actual	Value Type	Desired Outcome	Time Applicable	Calculation Method	Data Source	Data Location	Primary Stakeholder	Stakeholder Need Satisfied	State Funded Budget Program Number Responsible	Notes
4.1.1	Pesticide Regulation: Structural and Ornamental. Compliance rate category 7 licensed pesticide applicator	95%	60%	96%	Percent	equal to or greater than	State Fiscal Year (July 1 - June 30).	The structural compliance rate benchmark of 60% was exceeded. For the reporting period, the structural compliance rate was 96%.	Office Records	511 Westinghouse Road, Pendleton, SC 29670 and electronically	Homeowners, citizens of South Carolina	Homeowners, citizens of South Carolina	2000.010100.00; 2002.0500000.00	0
4.1.2	Pesticide Regulation: General. Total number of pesticide applicators licensed in category 3	3690	2800	3065	Count	equal to or greater than	State Fiscal Year (July 1 - June 30).	The total number applicators possessing a valid license during the reporting period.	Office Records	511 Westinghouse Road, Pendleton, SC 29670 and electronically	Homeowners, citizens of South Carolina and pesticide applicators	Homeowners, citizens of South Carolina and pesticide applicators	2000.010100.00; 2002.0500000.00	0
4.1.3	Pesticide Regulation: Percentage of district employees trained. General; Implement sustainable IPM programs in selected SC school districts	100%	100%	100%	Percent	Maintain	State Fiscal Year (July 1 - June 30).	Applicators contacted and trained to perform pest control activities at schools in 5 Districts inspected and in compliance with regulations	Office Records	511 Westinghouse Road, Pendleton, SC 29670 and electronically	South Carolina School Distrcits, citizens of South Carolina, pesticide applicators	South Carolina School Distrcits, citizens of South Carolina, pesticide applicators	2000.010100.00; 2002.0500000.00	0

These responses were submitted for the FY 2020-2021 Accountability Report by the														
CLEMSON UNIVERSITY - PSA														
GoalRegulatory Services protects the citizens of South Carolina and the environment by implementing legislatively mandated regulatory programs and by providing other essential programs and services for agriculture and related sectors and for homeowners.														
Strategy4.2										Statewide Enterprise Objective				
Protect South Carolina's structures from termites and other structural pests by ensuring high standards are met for the pest.										Maintaining Safety, Integrity and Security				
Measure Number	Description	Base	Target	Actual	Value Type	Desired Outcome	Time Applicable	Calculation Method	Data Source	Data Location	Primary Stakeholder	Stakeholder Need Satisfied	State Funded Budget Program Number Responsible	Notes
4.2.1	The number of compliance, complaints and other inspections conducted annually will be recorded and compared against an established benchmark of 2000 inspections. Regulate the structural and turf/ornamental pest control industries ensuring compliance with pesticide laws and regulations	2557	2000	2082	Count	equal to or greater than	State Fiscal Year (July 1 - June 30).	The total number of inspections	Office Records	511 Westinghouse Road, Pendleton, SC 29670 and electronically	Citizens of South Carolina, homeowners, and agriculture and business community	Citizens of South Carolina, homeowners, and agriculture and business community	2000.010100.00; 2002.0500000.00	0
4.2.2	The percentage of repeat violators (structural compliance)	9%	20%	16%	Percent	equal to or less than	State Fiscal Year (July 1 - June 30).	Percentage of repeat violators	Office Records	511 Westinghouse Road, Pendleton, SC 29670 and electronically	Citizens of South Carolina, homeowners, and agriculture and business community	Citizens of South Carolina, homeowners, and agriculture and business community	2002.0500000.00	0

Goal	Regulatory Services protects the citizens of South Carolina and the environment by implementing legislatively mandated regulatory programs and by providing other essential programs and services for agriculture and related sectors and for homeowners.
------	---

Strategy	4.3
----------	-----

Statewide Enterprise Objective	
<p>1. Improve the efficiency of the state's operations</p> <p>2. Reduce the state's carbon footprint</p> <p>3. Enhance the state's financial health</p> <p>4. Improve the state's infrastructure</p> <p>5. Strengthen the state's economy</p> <p>6. Improve the state's education system</p> <p>7. Enhance the state's healthcare system</p> <p>8. Improve the state's public safety</p> <p>9. Strengthen the state's social services</p> <p>10. Improve the state's environmental protection</p>	<p>1. Improve the efficiency of the state's operations</p> <p>2. Reduce the state's carbon footprint</p> <p>3. Enhance the state's financial health</p> <p>4. Improve the state's infrastructure</p> <p>5. Strengthen the state's economy</p> <p>6. Improve the state's education system</p> <p>7. Enhance the state's healthcare system</p> <p>8. Improve the state's public safety</p> <p>9. Strengthen the state's social services</p> <p>10. Improve the state's environmental protection</p>

Ensure that the fertilizer, lime, landplaster and soil amendments sold in South Carolina will be of high quality and properly labeled.

Maintaining Safety, Integrity and Security
--

[illegible]

These responses were submitted for the FY 2020-2021 Accountability Report by the														
CLEMSON UNIVERSITY - PSA														
Goal Regulatory Services protects the citizens of South Carolina and the environment by implementing legislatively mandated regulatory programs and by providing other essential programs and services for agriculture and related sectors and for homeowners.														
Strategy 4.4										Statewide Enterprise Objective				
Protect South Carolina' agriculture and the environment from harmful or invasive plant disease, weed, and insect species.										Maintaining Safety, Integrity and Security				
Measure Number	Description	Base	Target	Actual	Value Type	Desired Outcome	Time Applicable	Calculation Method	Data Source	Data Location	Primary Stakeholder	Stakeholder Need Satisfied	State Funded Budget Program Number Responsible	Notes
4.4.1	All nursery growers and dealers inspected and in compliance. Protect South Carolina's ecosystem and all levels of agricultural production by mitigating impact from plant pests, i.e., plant diseases, inspections etc.	100%	100%	100%	Percent	equal to or greater than	State Fiscal Year (July 1 - June 30).	Percent of nursery grower and dealers inspected that were in compliance.	Office Records	511 Westinghouse Road, Pendleton, SC 29670 and electronically	Citizens of South Carolina, homeowners, and agriculture and business community	Citizens of South Carolina, homeowners, and agriculture and business community	2000.010100.00	0
4.4.2	Acceptance rate of phytosanitary certificates issued	100%	100%	100%	Percent	Maintain	State Fiscal Year (July 1 - June 30).	Percentage of acceptance of phytosanitary certificates.	Office Records	511 Westinghouse Road, Pendleton, SC 29670 and electronically	Citizens of South Carolina, homeowners, and agriculture and business community	Citizens of South Carolina, homeowners, and agriculture and business community	2000.010100.00	0
4.4.3	Number of targeted surveys to detect potential invasive species introductions and regularly survey and treat currently infested sites with the goal of eradication. The fewer the number of surveys, the fewer the pests that are detected in SC.	18	11	18	Count	equal to or greater than	State Fiscal Year (July 1 - June 30).	Number of targeted invasive species surveys.	Office Records	511 Westinghouse Road, Pendleton, SC 29670 and electronically	Homeowners, citizens of South Carolina	Homeowners, citizens of South Carolina	2000.010100.00	0

Goal	Regulatory Services protects the citizens of South Carolina and the environment by implementing legislatively mandated regulatory programs and by providing other essential programs and services for agriculture and related sectors and for homeowners.
------	---

Strategy	4.5	Statewide Enterprise Objective
----------	-----	--------------------------------

Established standards will be met for the production of certified seed.	Maintaining Safety, Integrity and Security
---	--

[illegible]

Goal	Regulatory Services protects the citizens of South Carolina and the environment by implementing legislatively mandated regulatory programs and by providing other essential programs and services for agriculture and related sectors and for homeowners.
------	---

Strategy	4.6
----------	-----

Statewide Enterprise Objective	
<p>1. Improve the quality of life for all residents</p> <p>2. Improve the economic health of the state</p> <p>3. Improve the environment</p> <p>4. Improve the state's infrastructure</p> <p>5. Improve the state's workforce</p> <p>6. Improve the state's health care system</p> <p>7. Improve the state's education system</p> <p>8. Improve the state's public safety</p> <p>9. Improve the state's cultural and historical resources</p> <p>10. Improve the state's natural resources</p>	<p>1. Improve the quality of life for all residents</p> <p>2. Improve the economic health of the state</p> <p>3. Improve the environment</p> <p>4. Improve the state's infrastructure</p> <p>5. Improve the state's workforce</p> <p>6. Improve the state's health care system</p> <p>7. Improve the state's education system</p> <p>8. Improve the state's public safety</p> <p>9. Improve the state's cultural and historical resources</p> <p>10. Improve the state's natural resources</p>

Correctly identify or diagnose plant pests and diseases and provide effective control recommendations in a timely manner.

Maintaining Safety, Integrity and Security

[illegible]

Goal	Regulatory Services protects the citizens of South Carolina and the environment by implementing legislatively mandated regulatory programs and by providing other essential programs and services for agriculture and related sectors and for homeowners.
------	---

Strategy	4.7	Statewide Enterprise Objective
----------	-----	--------------------------------

Help prepare South Carolina to better recover from disasters and other emergencies impacting agriculture in the state.	Maintaining Safety, Integrity and Security
--	--

[illegible]

These responses were submitted for the FY 2020-2021 Accountability Report by the														
CLEMSON UNIVERSITY - PSA														
Goal Regulatory Services protects the citizens of South Carolina and the environment by implementing legislatively mandated regulatory programs and by providing other essential programs and services for agriculture and related sectors and for homeowners.														
Strategy	4.8									Statewide Enterprise Objective				
Enforce that established standards will be met for the production of certified organic products.										Maintaining Safety, Integrity and Security				
Measure Number	Description	Base	Target	Actual	Value Type	Desired Outcome	Time Applicable	Calculation Method	Data Source	Data Location	Primary Stakeholder	Stakeholder Need Satisfied	State Funded Budget Program Number Responsible	Notes
4.8.1	Percent of NOP accredited certification services to organic producers, processors, and handlers who seek certification through our agency provided to USDA.	100%	100%	100%	Percent	Maintain	State Fiscal Year (July 1 - June 30).	Percent of NOP accredited certification services provided to USDA.	Office Reports	511 Westinghouse Road, Pendleton, SC 29670 and electronically	Citizens of South Carolina, homeowners, and agriculture and business community	Citizens of South Carolina, homeowners, and agriculture and business community	2000.010100.00	0

Goal	Regulatory Services protects the citizens of South Carolina and the environment by implementing legislatively mandated regulatory programs and by providing other essential programs and services for agriculture and related sectors and for homeowners.
------	---

Strategy	4.9
----------	-----

Statewide Enterprise Objective	
1	Improve the efficiency of the state's operations and reduce costs.
2	Enhance the quality of public services and programs.
3	Strengthen the state's financial health and fiscal responsibility.
4	Improve the state's infrastructure and transportation systems.
5	Enhance the state's environmental protection and natural resources management.
6	Strengthen the state's economic development and job creation efforts.
7	Improve the state's health care system and public health outcomes.
8	Enhance the state's education system and student achievement.
9	Strengthen the state's social services and community support programs.
10	Improve the state's public safety and law enforcement efforts.

Provide for effective leadership, management and administration of Division programs, personnel and facilities.

Maintaining Safety, Integrity and Security
--

[illegible]

FY 2020-2021 Agency Accountability Report
FY2021-22 Strategic Plan:

These responses were submitted for the FY 2020-2021 Accountability Report by the
CLEMSON UNIVERSITY - PSA

Goal The Clemson Experiment Station aims to identify critical issues and find solutions through research that support South Carolina's agriculture and forest industries.

Strategy 1.1

Statewide Enterprise Objective

Enhance research prominence in focus areas that maintain and support the growth of South Carolina's agriculture and forest industries.

Education, Training, and Human Development

Measure Number	Description	Base	Target	Actual	Value Type	Desired Outcome	Time Applicable	Calculation Method	Data Source	Data Location	Primary Stakeholder	Stakeholder Need Satisfied	State Funded Program Number Responsible	Notes
1.1.1	The number of research proposals and funding requests submitted to granting agencies	397	250		Count	equal to or greater than	State Fiscal Year (July 1 - June 30).	Total number count	INFO-ED	Clemson Server	Stakeholders providing input for external grant submissions include commodity groups (i.e. SC Soybean Board), producer organizations (i.e. Farm Bureau) and individual producers.	Individual grant submissions are typically defined by input from multiple sources of stakeholders.	3004.000000.000	
1.1.2	The number of research proposal funded extramurally	166	150		Count	equal to or greater than	State Fiscal Year (July 1 - June 30).	Total number count	INFO-ED	Clemson Server	Scientific community; Citizens of SC	Basic research that identifies potential solutions to agricultural and forest industries challenges	3004.000000.000	
1.1.3	The number of technical contributions related to research	106	90		Count	equal to or greater than	State Fiscal Year (July 1 - June 30).	Total number count	Experiment Station Data	Clemson Server; Experiment Station Office	Scientific community; Citizens of SC	Results of research disseminated to the scientific community for continued investigation and the transfer of technology to agricultural and forest industries.	3004.000000.000	0

CLEMSON UNIVERSITY - PSA

Goal	The Clemson Experiment Station aims to identify critical issues and find solutions through research that support South Carolina's agriculture and forest industries.
------	--

Strategy	1.3	Statewide Enterprise Objective
-----------------	------------	---------------------------------------

Statewide Enterprise Objective	
1	Improve the efficiency of the state's operations and reduce costs.
2	Enhance the quality of public services and programs.
3	Strengthen the state's financial health and fiscal responsibility.
4	Improve the state's infrastructure and transportation systems.
5	Enhance the state's environmental protection and natural resources.
6	Improve the state's health care and social services.
7	Strengthen the state's education system and workforce development.
8	Enhance the state's economic development and job creation.
9	Improve the state's public safety and law enforcement.
10	Enhance the state's cultural and historical preservation.

Improve undergraduate and graduate education experiences offered at RECs.

Education, Training, and Human Development

[illegible]

These responses were submitted for the FY 2020-2021 Accountability Report by the														
CLEMSON UNIVERSITY - PSA														
Goal The Clemson Cooperative Extension Service will improve the economy, environment, and well-being of South Carolinians through the delivery of unbiased research-based information and education.														
Strategy 2.1										Statewide Enterprise Objective				
Develop and implement agricultural production systems that are economically sustainable and environmentally sound (Agrisystems Productivity and Profitability)										Education, Training, and Human Development				
Measure Number	Description	Base	Target	Actual	Value Type	Desired Outcome	Time Applicable	Calculation Method	Data Source	Data Location	Primary Stakeholder	Stakeholder Need Satisfied	State Funded Budget Program Number Responsible	Notes
2.1.1	Number of acres in South Carolina impacted as a result of Extension programs	211296	300000		Count	equal to or greater than	State Fiscal Year (July 1 - June 30).	# of acres impacted by Extension programs. The acreage may be impacted from improved practices, alternative crops planted, application of integrated crop management strategies and other land management strategies.	Clemson University Management Information System (CUMIS)	Clemson Extension Office	Natural resources	Education of producers and farmers to ensure economically sustainable and environmentally sound practices	3504.000000.000	
2.1.2	Number of producers implementing new practices learned for livestock and forage production	65%	50%		Percent	equal to or greater than	State Fiscal Year (July 1 - June 30).	# of producers that self-reported implementation of a livestock/forage production practice. This may include implementation of breeding practices, recommended grazing management systems, establishment of improved forage cultivars, etc.	Clemson University Management Information System (CUMIS)	Clemson Extension Office	Producers and farmers	Implementation of methods taughts that ensure economically sustainable and environmentally sound practices	3504.000000.000	

These responses were submitted for the FY 2020-2021 Accountability Report by the														
CLEMSON UNIVERSITY - PSA														
Goal The Clemson Cooperative Extension Service will improve the economy, environment, and well-being of South Carolinians through the delivery of unbiased research-based information and education.														
Strategy 2.4										Statewide Enterprise Objective				
Provide training on the safe preparation, production and handling of food while educating citizens on wise nutritional choices that leads to improved health (Food Safety and Nutrition)										Education, Training, and Human Development				
Measure Number	Description	Base	Target	Actual	Value Type	Desired Outcome	Time Applicable	Calculation Method	Data Source	Data Location	Primary Stakeholder	Stakeholder Need Satisfied	State Funded Budget Program Number Responsible	Notes
2.4.1	Estimated savings from potentially preventing food-borne illnesses in restaurants.	\$0.00	\$250,000.00		Dollar Amount	equal to or greater than	State Fiscal Year (July 1 - June 30).	# establishments represented in programs teaching safe food preparation and handlings programs (from CUMIS) * \$6,630	Clemson University Management Information System (CUMIS)	Clemson Extension Office	Resturants and food consumers	Train restaurant and food workers in safe handling practices to protect food consumers from food-borne illnesses	3504.000000.000	
2.4.2	Improve the quality of life for South Carolinians through increased physical and mental health in 5 rural counties.	5823	4000		Count	equal to or greater than	State Fiscal Year (July 1 - June 30).	improving life and improved lifestyles through attendance at health and nutrition programs throughout SC	Clemson University Management Information System (CUMIS)	Clemson Extension Office	Rural county residents in SC	Improved quality of life through education on lifestyle and food habits	3504.000000.000	

These responses were submitted for the FY 2020-2021 Accountability Report by the														
CLEMSON UNIVERSITY - PSA														
Goal The Clemson Cooperative Extension Service will improve the economy, environment, and well-being of South Carolinians through the delivery of unbiased research-based information and education.														
Strategy 2.5										Statewide Enterprise Objective				
Empower youth to grow into healthy and productive members of society through hands-on, inclusive and mentored learning opportunities (Youth Development and Families)										Education, Training, and Human Development				
Measure Number	Description	Base	Target	Actual	Value Type	Desired Outcome	Time Applicable	Calculation Method	Data Source	Data Location	Primary Stakeholder	Stakeholder Need Satisfied	State Funded Budget Program Number Responsible	Notes
2.5.1	Potential future volunteer contributions (in dollars) by current 4-H members (projected 15 years into the future).	\$17,026,854.00	\$29,000,000.00		Dollar Amount	equal to or greater than	Other	(# 4-H members * Volunteer Hourly rate) * (Avg # Volunteer Hours for 4-H by adults) projected forward 15 years with an inflation rate of 2.5%	ES-237	USDA-NIFA	Community members throughout SC	Community residents benefit through learned sense of volunteer and service by participation in 4-H programs and the future value of the learned service	3504.000000.000	
2.5.2	Percentage of 4-H members engaged in citizenship and community service programs.	39%	25%		Percent	equal to or greater than	Other	Percentage of 4-H participants in citizenship programs divided by total 4-H participation	ES-237	USDA-NIFA	Community members throughout SC	Community residents benefits from increased youth participation in community projects and leadership.	3504.000000.000	

Goal Clemson Livestock Poultry Health will ensure the continued health of the livestock and poultry industry, ensure safe, wholesome, properly labeled meat and poultry products, and protect the public health of the citizens of South Carolina.

Strategy 3.1

Statewide Enterprise Objective

Enforce state and federal animal health laws and regulations by monitoring interstate movement of animals, performing inspections at livestock auction markets, and developing and expanding livestock traceability capability for livestock disease prevention, control, surveillance and eradication programs to protect animal and public health.

Maintaining Safety, Integrity and Security

Measure Number	Description	Base	Target	Actual	Value Type	Desired Outcome	Time Applicable	Calculation Method	Data Source	Data Location	Primary Stakeholder	Stakeholder Need Satisfied	State Funded Budget Program Number Responsible	Notes
3.1.1	Total number of new premises registered by Livestock Poultry Health	10452	8625		Count	equal to or greater than	State Fiscal Year (July 1 - June 30).	Total premises registered	LPH reports	Clemson Livestock Poultry Health Office	SC livestock and poultry producers.	Improves traceability of active livestock and poultry premises to help resolve animal disease outbreak events.	2500.010000.000; 2501.050000.000	
3.1.2	Meet disease testing and trace back requirements for continued "disease free" status as specified in the code of federal regulations	100%	100%		Percent Complete	Complete	State Fiscal Year (July 1 - June 30).	Disease testing requirements met to maintain status	LPH reports	Clemson Livestock Poultry Health Office	SC livestock and poultry producers.	Maintaining state disease-free status allows livestock and poultry producers to export products for national or international sales without (or with less) regulatory restrictions.	2500.010000.000; 2501.050000.000	
3.1.3	Number of inspections and investigations conducted at locations including livestock markets, exhibitions, sales, and on livestock farms throughout South Carolina	696	450		Count	equal to or greater than	State Fiscal Year (July 1 - June 30).	Number of inspections, farm visits, and investigations	LPH reports	Clemson Livestock Poultry Health Office	SC livestock markets, and SC and interstate livestock producers.	Maintaining state disease-free status allows livestock and poultry producers to export products for national or international sales without (or with less) regulatory restrictions.	2500.010000.000; 2501.050000.000	

CLEMSON UNIVERSITY - PSA

Goal	Clemson Livestock Poultry Health will ensure the continued health of the livestock and poultry industry, ensure safe, wholesome, properly labeled meat and poultry products, and protect the public health of the citizens of South Carolina.
------	---

Strategy	3.2
-----------------	------------

Statewide Enterprise Objective	
1	Improve the efficiency of the state's operations and reduce costs.
2	Enhance the quality of public services and programs.
3	Strengthen the state's financial management and budgetary control.
4	Improve the state's infrastructure and transportation systems.
5	Enhance the state's environmental protection and natural resource management.
6	Strengthen the state's public safety and law enforcement.
7	Improve the state's health care and social services.
8	Enhance the state's economic development and job creation.
9	Strengthen the state's education system and workforce development.
10	Improve the state's housing and community development.
11	Enhance the state's cultural and recreational facilities.
12	Strengthen the state's public works and maintenance.
13	Improve the state's information technology and communication systems.
14	Enhance the state's public relations and outreach.
15	Strengthen the state's legal and judicial system.
16	Improve the state's public safety and law enforcement.
17	Enhance the state's health care and social services.
18	Strengthen the state's economic development and job creation.
19	Improve the state's housing and community development.
20	Enhance the state's cultural and recreational facilities.
21	Strengthen the state's public works and maintenance.
22	Improve the state's information technology and communication systems.
23	Enhance the state's public relations and outreach.
24	Strengthen the state's legal and judicial system.
25	Improve the state's public safety and law enforcement.
26	Enhance the state's health care and social services.
27	Strengthen the state's economic development and job creation.
28	Improve the state's housing and community development.
29	Enhance the state's cultural and recreational facilities.
30	Strengthen the state's public works and maintenance.
31	Improve the state's information technology and communication systems.
32	Enhance the state's public relations and outreach.
33	Strengthen the state's legal and judicial system.
34	Improve the state's public safety and law enforcement.
35	Enhance the state's health care and social services.
36	Strengthen the state's economic development and job creation.
37	Improve the state's housing and community development.
38	Enhance the state's cultural and recreational facilities.
39	Strengthen the state's public works and maintenance.
40	Improve the state's information technology and communication systems.
41	Enhance the state's public relations and outreach.
42	Strengthen the state's legal and judicial system.
43	Improve the state's public safety and law enforcement.
44	Enhance the state's health care and social services.
45	Strengthen the state's economic development and job creation.
46	Improve the state's housing and community development.
47	Enhance the state's cultural and recreational facilities.
48	Strengthen the state's public works and maintenance.
49	Improve the state's information technology and communication systems.
50	Enhance the state's public relations and outreach.
51	Strengthen the state's legal and judicial system.
52	Improve the state's public safety and law enforcement.
53	Enhance the state's health care and social services.
54	Strengthen the state's economic development and job creation.
55	Improve the state's housing and community development.
56	Enhance the state's cultural and recreational facilities.
57	Strengthen the state's public works and maintenance.
58	Improve the state's information technology and communication systems.
59	Enhance the state's public relations and outreach.
60	Strengthen the state's legal and judicial system.
61	Improve the state's public safety and law enforcement.
62	Enhance the state's health care and social services.
63	Strengthen the state's economic development and job creation.
64	Improve the state's housing and community development.
65	Enhance the state's cultural and recreational facilities.
66	Strengthen the state's public works and maintenance.
67	Improve the state's information technology and communication systems.
68	Enhance the state's public relations and outreach.
69	Strengthen the state's legal and judicial system.
70	Improve the state's public safety and law enforcement.
71	Enhance the state's health care and social services.
72	Strengthen the state's economic development and job creation.
73	Improve the state's housing and community development.
74	Enhance the state's cultural and recreational facilities.
75	Strengthen the state's public works and maintenance.
76	Improve the state's information technology and communication systems.
77	Enhance the state's public relations and outreach.
78	Strengthen the state's legal and judicial system.
79	Improve the state's public safety and law enforcement.
80	Enhance the state's health care and social services.
81	Strengthen the state's economic development and job creation.
82	Improve the state's housing and community development.
83	Enhance the state's cultural and recreational facilities.
84	Strengthen the state's public works and maintenance.
85	Improve the state's information technology and communication systems.
86	Enhance the state's public relations and outreach.
87	Strengthen the state's legal and judicial system.
88	Improve the state's public safety and law enforcement.
89	Enhance the state's health care and social services.
90	Strengthen the state's economic development and job creation.
91	Improve the state's housing and community development.
92	Enhance the state's cultural and recreational facilities.
93	Strengthen the state's public works and maintenance.
94	Improve the state's information technology and communication systems.
95	Enhance the state's public relations and outreach.
96	Strengthen the state's legal and judicial system.
97	Improve the state's public safety and law enforcement.
98	Enhance the state's health care and social services.
99	Strengthen the state's economic development and job creation.
100	Improve the state's housing and community development.

Protect the health of consumers by providing a comprehensive inspection service to ensure safe, properly labeled, wholesome meat and poultry products through inspections and regulation in state and federal cross-utilization meat and poultry plants.

Maintaining Safety, Integrity and Security

[illegible]

Goal Clemson Livestock Poultry Health will ensure the continued health of the livestock and poultry industry, ensure safe, wholesome, properly labeled meat and poultry products, and protect the public health of the citizens of South Carolina.

Strategy 3.3

Statewide Enterprise Objective

Provide accurate and timely veterinary diagnostic and surveillance testing for early detection of disease, thus improving response and mitigating economic losses in livestock and poultry industry sectors.

Maintaining Safety, Integrity and Security

Measure Number	Description	Base	Target	Actual	Value Type	Desired Outcome	Time Applicable	Calculation Method	Data Source	Data Location	Primary Stakeholder	Stakeholder Need Satisfied	State Funded Budget Program Number Responsible	Notes
3.3.1	Pass rate of National Veterinary Services Laboratories (NVSL) proficiency tests for procedures performed in Clemson Veterinary Diagnostic Center for which NVSL monitors test performance.	100%	100%		Percent	Maintain	State Fiscal Year (July 1 - June 30).	Final pass rate of NVSL proficiency tests for procedures performed in Clemson Veterinary Diagnostic Center for which NVSL monitors test performance. Meet NVSL accreditation standards and criteria for technicians to be proficiency certified.	NVSL test results	NAHLN Portal and Clemson Livestock Poultry Health Office	SC veterinarians, animal owners, and state and federal inspected livestock and poultry slaughter and processing plants, and the general public.	Accurate results for samples submitted to laboratory diagnosing animal pathogens.	2500.010000.000; 2501.050000.000	
3.3.2	Maintain ISO 17025 accreditation for Clemson Veterinary Diagnostic Center	100%	100%		Percent Complete	Complete	State Fiscal Year (July 1 - June 30).	ISO 17025:2005 Accredited	Accrediting bodies	Clemson Livestock Poultry Health Office	SC veterinarians, animal owners, and state and federal inspected livestock and poultry slaughter and processing plants, and the general public.	Maintaining quality of diagnostic testing.	2500.010000.000; 2501.050000.000	
3.3.3	Number of diagnostic procedures performed	84467	80000		Count	equal to or greater than	State Fiscal Year (July 1 - June 30).	Total number of diagnostic procedures to accomplish mission and serve SC veterinarians and livestock and poultry producers.	LPH reports	Clemson Livestock Poultry Health Office	SC veterinarians, animal owners, and state and federal inspected livestock and poultry slaughter and processing plants, and the general public.	Diagnostic testing to detect animal and foodborne pathogens.	2500.010000.000; 2501.050000.000	

These responses were submitted for the FY 2020-2021 Accountability Report by the														
CLEMSON UNIVERSITY - PSA														
3.3.4	Percent of diagnostic procedures performed that are regulatory/production animal related	99%	90%		Percent	equal to or greater than	State Fiscal Year (July 1 - June 30).	Percentage of diagnostic procedures that are regulatory/product ion animal related diagnostics directly related to primary mission serving SC veterinarians and livestock and poultry producers.	LPH reports	Clemson Livestock Poultry Health Office	SC veterinarians, animal owners, and state and federal inspected livestock and poultry slaughter and processing plants, and the general public.	Regulatory testing to detect animal and foodborne pathogens to protect the food supply and public health.	2500.010000.000; 2501.050000.000	

These responses were submitted for the FY 2020-2021 Accountability Report by the														
CLEMSON UNIVERSITY - PSA														
Goal Regulatory Services protects the citizens of South Carolina and the environment by implementing legislatively mandated regulatory programs and by providing other essential programs and services for agriculture and related sectors and for homeowners.														
Strategy 4.1										Statewide Enterprise Objective				
Ensure the safe use of pesticides to protect South Carolina's public health, natural resources and environment.										Maintaining Safety, Integrity and Security				
Measure Number	Description	Base	Target	Actual	Value Type	Desired Outcome	Time Applicable	Calculation Method	Data Source	Data Location	Primary Stakeholder	Stakeholder Need Satisfied	State Funded Budget Program Number Responsible	Notes
4.1.1	Pesticide Regulation: Structural and Ornamental. Compliance rate category 7 licensed pesticide applicator	96%	60%		Percent	equal to or greater than	State Fiscal Year (July 1 - June 30).	The structural compliance rate benchmark of 60% was exceeded. For the reporting period, the structural compliance rate was 96%.	Office Records	511 Westinghouse Road, Pendleton, SC 29670 and electronically	Homeowners, citizens of South Carolina	Homeowners, citizens of South Carolina	2000.010100.00; 2002.0500000.00	
4.1.2	Pesticide Regulation: General. Total number of pesticide applicators licensed in category 3	3065	2800		Count	equal to or greater than	State Fiscal Year (July 1 - June 30).	The total number applicators possessing a valid license during the reporting period.	Office Records	511 Westinghouse Road, Pendleton, SC 29670 and electronically	Homeowners, citizens of South Carolina and pesticide applicators	Homeowners, citizens of South Carolina and pesticide applicators	2000.010100.00; 2002.0500000.00	
4.1.3	Pesticide Regulation: Percentage of district employees trained. General; Implement sustainable IPM programs in selected SC school districts	100%	100%		Percent	Maintain	State Fiscal Year (July 1 - June 30).	Applicators contacted and trained to perform pest control activities at schools in 5 Districts inspected and in compliance with regulations	Office Records	511 Westinghouse Road, Pendleton, SC 29670 and electronically	South Carolina School Distrcits, citizens of South Carolina, pesticide applicators	South Carolina School Distrcits, citizens of South Carolina, pesticide applicators	2000.010100.00; 2002.0500000.00	

These responses were submitted for the FY 2020-2021 Accountability Report by the														
CLEMSON UNIVERSITY - PSA														
Goal Regulatory Services protects the citizens of South Carolina and the environment by implementing legislatively mandated regulatory programs and by providing other essential programs and services for agriculture and related sectors and for homeowners.														
Strategy 4.2										Statewide Enterprise Objective				
Protect South Carolina's structures from termites and other structural pests by ensuring high standards are met for the pest.										Maintaining Safety, Integrity and Security				
Measure Number	Description	Base	Target	Actual	Value Type	Desired Outcome	Time Applicable	Calculation Method	Data Source	Data Location	Primary Stakeholder	Stakeholder Need Satisfied	State Funded Budget Program Number Responsible	Notes
4.2.1	The number of compliance, complaints and other inspections conducted annually will be recorded and compared against an established benchmark of 2000 inspections. Regulate the structural and turf/ornamental pest control industries ensuring compliance with pesticide laws and regulations	2082	2000		Count	equal to or greater than	State Fiscal Year (July 1 - June 30).	The total number of inspections	Office Records	511 Westinghouse Road, Pendleton, SC 29670 and electronically	Citizens of South Carolina, homeowners, and agriculture and business community	Citizens of South Carolina, homeowners, and agriculture and business community	2000.010100.00; 2002.0500000.00	
4.2.2	The percentage of repeat violators (structural compliance)	16%	20%		Percent	equal to or less than	State Fiscal Year (July 1 - June 30).	Percentage of repeat violators	Office Records	511 Westinghouse Road, Pendleton, SC 29670 and electronically	Citizens of South Carolina, homeowners, and agriculture and business community	Citizens of South Carolina, homeowners, and agriculture and business community	2002.0500000.00	

CLEMSON UNIVERSITY - PSA

Goal Regulatory Services protects the citizens of South Carolina and the environment by implementing legislatively mandated regulatory programs and by providing other essential programs and services for agriculture and related sectors and for homeowners.

Strategy

Statewide Enterprise Objective	
<p>1. Increase the number of people who are employed in the state by 10% by 2025.</p> <p>2. Increase the number of people who are employed in the state by 10% by 2025.</p>	<p>3. Increase the number of people who are employed in the state by 10% by 2025.</p> <p>4. Increase the number of people who are employed in the state by 10% by 2025.</p>

Ensure that the fertilizer, lime, landplaster and soil amendments sold in South Carolina will be of high quality and properly labeled.

Maintaining Safety, Integrity and Security
--

[illegible]

Goal Regulatory Services protects the citizens of South Carolina and the environment by implementing legislatively mandated regulatory programs and by providing other essential programs and services for agriculture and related sectors and for homeowners.

Strategy 4.4 Statewide Enterprise Objective

Protect South Carolina' agriculture and the environment from harmful or invasive plant disease, weed, and insect species. Maintaining Safety, Integrity and Security

Measure Number	Description	Base	Target	Actual	Value Type	Desired Outcome	Time Applicable	Calculation Method	Data Source	Data Location	Primary Stakeholder	Stakeholder Need Satisfied	State Funded Budget Program Number Responsible	Notes
4.4.1	All nursery growers and dealers inspected and in compliance. Protect South Carolina's ecosystem and all levels of agricultural production by mitigating impact from plant pests, i.e., plant diseases, inspections etc.	100%	100%		Percent	equal to or greater than	State Fiscal Year (July 1 - June 30).	Percent of nursery grower and dealers inspected that were in compliance.	Office Records	511 Westinghouse Road, Pendleton, SC 29670 and electronically	Citizens of South Carolina, homeowners, and agriculture and business community	Citizens of South Carolina, homeowners, and agriculture and business community	2000.010100.00	
4.4.2	Acceptance rate of phytosanitary certificates issued	100%	100%		Percent	Maintain	State Fiscal Year (July 1 - June 30).	Percentage of acceptance of phytosanitary certificates.	Office Records	511 Westinghouse Road, Pendleton, SC 29670 and electronically	Citizens of South Carolina, homeowners, and agriculture and business community	Citizens of South Carolina, homeowners, and agriculture and business community	2000.010100.00	
4.4.3	Number of targeted surveys to detect potential invasive species introductions and regularly survey and treat currently infested sites with the goal of eradication. The fewer the number of surveys, the fewer the pests that are detected in SC.	18	11		Count	equal to or greater than	State Fiscal Year (July 1 - June 30).	Number of targeted invasive species surveys.	Office Records	511 Westinghouse Road, Pendleton, SC 29670 and electronically	Homeowners, citizens of South Carolina	Homeowners, citizens of South Carolina	2000.010100.00	

These responses were submitted for the FY 2020-2021 Accountability Report by the														
CLEMSON UNIVERSITY - PSA														
Goal Regulatory Services protects the citizens of South Carolina and the environment by implementing legislatively mandated regulatory programs and by providing other essential programs and services for agriculture and related sectors and for homeowners.														
Strategy	4.5									Statewide Enterprise Objective				
Established standards will be met for the production of certified seed.										Maintaining Safety, Integrity and Security				
Measure Number	Description	Base	Target	Actual	Value Type	Desired Outcome	Time Applicable	Calculation Method	Data Source	Data Location	Primary Stakeholder	Stakeholder Need Satisfied	State Funded Budget Program Number Responsible	Notes
4.5.1	Percentage of seed lots inspected in the field that meet purity standards in laboratory tests. Seed is certified as true to variety and meets all official certification standards for quality and purity	100%	99%		Percent	equal to or greater than	State Fiscal Year (July 1 - June 30).	Percentage of seed lot field inspections that meet purity standards.	Office Records	511 Westinghouse Road, Pendleton, SC 29670 and electronically	Citizens of South Carolina, homeowners, and agriculture and business community	Citizens of South Carolina, homeowners, and agriculture and business community	2000.010100.00	

Goal	Regulatory Services protects the citizens of South Carolina and the environment by implementing legislatively mandated regulatory programs and by providing other essential programs and services for agriculture and related sectors and for homeowners.
------	---

Strategy

Statewide Enterprise Objective	
<p>1. Improve the efficiency of the state's operations</p> <p>2. Reduce the state's carbon footprint</p> <p>3. Enhance the state's financial health</p> <p>4. Improve the state's infrastructure</p> <p>5. Strengthen the state's economy</p> <p>6. Improve the state's education system</p> <p>7. Enhance the state's healthcare system</p> <p>8. Improve the state's public safety</p> <p>9. Strengthen the state's social services</p> <p>10. Improve the state's environmental protection</p>	<p>1. Improve the efficiency of the state's operations</p> <p>2. Reduce the state's carbon footprint</p> <p>3. Enhance the state's financial health</p> <p>4. Improve the state's infrastructure</p> <p>5. Strengthen the state's economy</p> <p>6. Improve the state's education system</p> <p>7. Enhance the state's healthcare system</p> <p>8. Improve the state's public safety</p> <p>9. Strengthen the state's social services</p> <p>10. Improve the state's environmental protection</p>

Correctly identify or diagnose plant pests and diseases and provide effective control recommendations in a timely manner.

Maintaining Safety, Integrity and Security
--

[illegible]

Goal	Regulatory Services protects the citizens of South Carolina and the environment by implementing legislatively mandated regulatory programs and by providing other essential programs and services for agriculture and related sectors and for homeowners.
------	---

Strategy

Statewide Enterprise Objective	
1	Improve the efficiency of the state's operations and reduce costs.
2	Enhance the quality of public services and programs.
3	Strengthen the state's financial health and fiscal responsibility.
4	Improve the state's infrastructure and transportation systems.
5	Enhance the state's environmental protection and natural resources management.
6	Improve the state's health care system and public health outcomes.
7	Strengthen the state's education system and workforce development.
8	Enhance the state's economic development and job creation.
9	Improve the state's housing and community development.
10	Strengthen the state's public safety and law enforcement.
11	Enhance the state's cultural and historical preservation.
12	Improve the state's energy and utility services.
13	Strengthen the state's international relations and trade.
14	Enhance the state's disaster preparedness and response.
15	Improve the state's information technology and digital services.
16	Strengthen the state's public administration and governance.
17	Enhance the state's social services and human resources.
18	Improve the state's transportation and infrastructure.
19	Strengthen the state's environmental protection and natural resources management.
20	Enhance the state's health care system and public health outcomes.
21	Improve the state's education system and workforce development.
22	Strengthen the state's economic development and job creation.
23	Enhance the state's housing and community development.
24	Strengthen the state's public safety and law enforcement.
25	Enhance the state's cultural and historical preservation.
26	Improve the state's energy and utility services.
27	Strengthen the state's international relations and trade.
28	Enhance the state's disaster preparedness and response.
29	Improve the state's information technology and digital services.
30	Strengthen the state's public administration and governance.
31	Enhance the state's social services and human resources.
32	Improve the state's transportation and infrastructure.
33	Strengthen the state's environmental protection and natural resources management.
34	Enhance the state's health care system and public health outcomes.
35	Improve the state's education system and workforce development.
36	Strengthen the state's economic development and job creation.
37	Enhance the state's housing and community development.
38	Strengthen the state's public safety and law enforcement.
39	Enhance the state's cultural and historical preservation.
40	Improve the state's energy and utility services.
41	Strengthen the state's international relations and trade.
42	Enhance the state's disaster preparedness and response.
43	Improve the state's information technology and digital services.
44	Strengthen the state's public administration and governance.
45	Enhance the state's social services and human resources.
46	Improve the state's transportation and infrastructure.
47	Strengthen the state's environmental protection and natural resources management.
48	Enhance the state's health care system and public health outcomes.
49	Improve the state's education system and workforce development.
50	Strengthen the state's economic development and job creation.
51	Enhance the state's housing and community development.
52	Strengthen the state's public safety and law enforcement.
53	Enhance the state's cultural and historical preservation.
54	Improve the state's energy and utility services.
55	Strengthen the state's international relations and trade.
56	Enhance the state's disaster preparedness and response.
57	Improve the state's information technology and digital services.
58	Strengthen the state's public administration and governance.
59	Enhance the state's social services and human resources.
60	Improve the state's transportation and infrastructure.
61	Strengthen the state's environmental protection and natural resources management.
62	Enhance the state's health care system and public health outcomes.
63	Improve the state's education system and workforce development.
64	Strengthen the state's economic development and job creation.
65	Enhance the state's housing and community development.
66	Strengthen the state's public safety and law enforcement.
67	Enhance the state's cultural and historical preservation.
68	Improve the state's energy and utility services.
69	Strengthen the state's international relations and trade.
70	Enhance the state's disaster preparedness and response.
71	Improve the state's information technology and digital services.
72	Strengthen the state's public administration and governance.
73	Enhance the state's social services and human resources.
74	Improve the state's transportation and infrastructure.
75	Strengthen the state's environmental protection and natural resources management.
76	Enhance the state's health care system and public health outcomes.
77	Improve the state's education system and workforce development.
78	Strengthen the state's economic development and job creation.
79	Enhance the state's housing and community development.
80	Strengthen the state's public safety and law enforcement.
81	Enhance the state's cultural and historical preservation.
82	Improve the state's energy and utility services.
83	Strengthen the state's international relations and trade.
84	Enhance the state's disaster preparedness and response.
85	Improve the state's information technology and digital services.
86	Strengthen the state's public administration and governance.
87	Enhance the state's social services and human resources.
88	Improve the state's transportation and infrastructure.
89	Strengthen the state's environmental protection and natural resources management.
90	Enhance the state's health care system and public health outcomes.
91	Improve the state's education system and workforce development.
92	Strengthen the state's economic development and job creation.
93	Enhance the state's housing and community development.
94	Strengthen the state's public safety and law enforcement.
95	Enhance the state's cultural and historical preservation.
96	Improve the state's energy and utility services.
97	Strengthen the state's international relations and trade.
98	Enhance the state's disaster preparedness and response.
99	Improve the state's information technology and digital services.
100	Strengthen the state's public administration and governance.

Help prepare South Carolina to better recover from disasters and other emergencies impacting agriculture in the state.

Maintaining Safety, Integrity and Security
--

[illegible]

CLEMSON UNIVERSITY - PSA

Goal	Regulatory Services protects the citizens of South Carolina and the environment by implementing legislatively mandated regulatory programs and by providing other essential programs and services for agriculture and related sectors and for homeowners.
------	---

Strategy

Statewide Enterprise Objective	
<p>1. Improve the efficiency of the state's operations.</p> <p>2. Reduce the state's carbon footprint.</p> <p>3. Improve the state's financial health.</p> <p>4. Enhance the state's infrastructure.</p> <p>5. Improve the state's public services.</p>	<p>1. Improve the efficiency of the state's operations.</p> <p>2. Reduce the state's carbon footprint.</p> <p>3. Improve the state's financial health.</p> <p>4. Enhance the state's infrastructure.</p> <p>5. Improve the state's public services.</p>

Enforce that established standards will be met for the production of certified organic products.

Maintaining Safety, Integrity and Security
--

[illegible]

These responses were submitted for the FY 2020-2021 Accountability Report by the														
CLEMSON UNIVERSITY - PSA														
Goal Regulatory Services protects the citizens of South Carolina and the environment by implementing legislatively mandated regulatory programs and by providing other essential programs and services for agriculture and related sectors and for homeowners.														
Strategy 4.9										Statewide Enterprise Objective				
Provide for effective leadership, management and administration of Division programs, personnel and facilities.										Maintaining Safety, Integrity and Security				
Measure Number	Description	Base	Target	Actual	Value Type	Desired Outcome	Time Applicable	Calculation Method	Data Source	Data Location	Primary Stakeholder	Stakeholder Need Satisfied	State Funded Budget Program Number Responsible	Notes
4.9.1	Percent of analytical testing for soil, plant tissue, feed and forage, animal waste, irrigation water, and compost samples provided for individual clients, commercial dealers, Extension Agents, Extension Specialists, and researchers in South Carolina	100%	100%		Percent	Maintain	State Fiscal Year (July 1 - June 30).	Percentage of analytical tests performed of samples provided.	Agriculture Service Lab Annual Report	171 Old Cherry Road, Clemson, SC 29634 and electronically	Citizens of South Carolina, homeowners, and agriculture and business community, Clemson Extension Services	Citizens of South Carolina, homeowners, and agriculture and business community, Clemson Extension Services	2000.010100.00	
4.9.2	Percentage of Apiary Inspections conducted	100%	88%		Percent	equal to or greater than	State Fiscal Year (July 1 - June 30).	Percentage of apiaries inspected.	Office Reports	511 Westinghouse Road, Pendleton, SC 29670 and electronically	Citizens of South Carolina, homeowners, and agriculture and business community	Citizens of South Carolina, homeowners, and agriculture and business community	2000.010100.00	

FY 2020-2021 Agency Accountability Report
Budget Responses:

These responses were submitted for the FY 2020-2021 Accountability Report by the
CLEMSON UNIVERSITY - PSA

			FY 2020-21 Expenditures (Actual)				FY 2021-22 Expenditures (Projected)			
State Funded Program Number	State Funded Program Title	Description of State Funded Program	General	Other	Federal	TOTAL	General	Other	Federal	TOTAL
2000.010100.000	Regulatory & Pub Serv - General	Regulatory Services protect the state from exotic and invasive species, ensures that pesticides are used safely, regulates the structural pest control industry, verifies that fertilizer and lime meet standards and labeled guarantees, conducts programs for seed and organic certification, provides diagnosis of plant pests, and ensures readiness to respond to a catastrophic event impacting the state's agriculture.	\$953,675.00	\$3,048,615.00		\$4,002,290.00	\$934,309.00	\$4,473,884.00		\$5,408,193.00
2002.050000.000	Regulatory & Pub Serv - Restricted	Regulatory Services protect the state from exotic and invasive species, ensures that pesticides are used safely, regulates the structural pest control industry, verifies that fertilizer and lime meet standards and labeled guarantees, conducts programs for seed and organic certification, provides diagnosis of plant pests, and ensures readiness to respond to a catastrophic event impacting the state's agriculture.			\$1,351,327.00	\$1,351,327.00			\$3,253,249.00	\$3,253,249.00
2500.010000.000	Livestock - Poultry Hlth - Gen	The role of the Clemson Livestock Poultry Health (LPH) is to protect animal health through control of endemic, foreign, and emerging diseases in livestock and poultry and to protect the health of S. C. consumers by providing a comprehensive inspection service to ensure that meat and poultry products are safe, wholesome and accurately labeled.	\$3,375,103.00	\$14,872.00		\$3,389,975.00	\$3,277,739.00	\$1,114,513.00		\$4,392,252.00

These responses were submitted for the FY 2020-2021 Accountability Report by the
CLEMSON UNIVERSITY - PSA

			FY 2020-21 Expenditures (Actual)				FY 2021-22 Expenditures (Projected)			
		The role of the Clemson Livestock Poultry Health (LPH) is to protect animal health through control of endemic, foreign, and emerging diseases in livestock and poultry and to protect the health of S. C. consumers by providing a comprehensive inspection service to ensure that meat and poultry products are safe, wholesome and accurately labeled.			\$2,064,194.00	\$2,064,194.00			\$2,110,904.00	\$2,110,904.00
2501.050000.000	Livestock - Poultry Hlth - Rest									
		The role of Clemson's Experiment Station is to conduct research to develop relevant, science-based information that improves the state's economy by enhancing agriculture and forestry production, and natural resources management.								
3004.000000.000	Agricultural Research		\$14,253,141.00	\$3,185,071.00	\$4,348,687.00	\$21,786,899.00	\$15,633,565.00	\$4,942,886.00	\$5,326,269.00	\$25,902,720.00
		The role of Clemson Extension is to transfer science-based information from the Experiment Station, Livestock-Poultry Health and Regulatory Services to commercial growers, livestock producers, land managers and individuals so that clientele can use the information to improve their well-being.								
3504.000000.000	Cooperative Extension Service		\$15,606,106.00	\$3,716,411.00	\$6,201,009.00	\$25,523,526.00	\$16,049,371.00	\$10,231,180.00	\$7,664,969.00	\$33,945,520.00
		Employer paid portion of benefits for state employees								
9500.050000.000	State Employer Contributions		\$12,534,268.00	\$2,450,031.00	\$3,333,693.00	\$18,317,992.00	\$13,402,959.00	\$2,633,105.00	\$4,169,609.00	\$20,205,673.00

FY 2020-2021 Agency Accountability Report

Legal Responses:

These responses were submitted for the FY 2020-2021 Accountability Report by the

CLEMSON UNIVERSITY - PSA

Description	Purpose	Law Number	Jurisdiction	Type	Notes
Clemson University shall have general powers and duties related to certain agricultural investigations, including the regulation and enforcement of livestock and poultry diseases, host statewide Extension meetings, etc.	Requires a service	46-7-10	State	Statute	Clemson University Duties and Powers in General
Provides for Clemson University to operate at least two experimental stations across the State to conduct farm demonstrations and research. Furthermore, Clemson to receive appropriations from Congress for operation of said experiment stations.	Requires a service	46-7-30, and 46-7-50 and 46-7-80 thru 90	State	Statute	Enforcement of State Regulations
Provides for Clemson to receive funding from Congress, as well as grants, while carrying out research and cooperative extension work.	Requires a service	46-7-60 thru 90	State	Statute	Education to citizens of South Carolina
Provides for the State veterinarian to oversee the permitting, inspection and operation of a public livestock market within the State.	Requires a service	47-11-10 thru 170	State	Statute	State Animal Health Authority
Provides for the State Veterinarian to carry out the day to day responsibilities of the Clemson BOT as it relates to the regulation of livestock and poultry health diseases. This includes the authority to establish quarantines, enact regulations focused on the control of certain livestock diseases, to prevent the sale of diseased livestock, to embargo livestock likely to pose a disease threat.	Requires a service	47-13-10 et seq.	State	Statute	State Animal Health Authority
Provides for the Director of LPH to oversee and establish a livestock meat inspection program, including the oversight and inspection of the slaughter and preparation of meat products for intrastate sale. Clemson is also authorized to carry out certain responsibilities under the Federal Meat Inspection Act if requested/agreed to by Federal Government.	Requires a service	47-17-10 et seq.	State	Statute	SC Meat Poultry Inpsection
Provides for Clemson PSA to be the designated state agency for cooperating with the US Secretary of Agriculture under the Federal Poultry Products Inspection Act. This includes the inspection of live poultry, carcasses and poultry products, as well as inspection of facilities for sanitary conditions and practices.	Requires a service	47-19-10 et seq.	State	Statute	SC Meat Poultry Inpsection
Provides that LPH Director shall permit, inspect and otherwise regulate rendering plants in South Carolina, as well as vehicles used to transport raw materials.	Requires a service	47-22-10 et seq.	State	Statute	State Animal Health Authority
Provides that the State Livestock Poultry Health Commission and State Veterinarian shall regulate the control and eradication of pseudo rabies in SC.	Requires a service	47-6-10 et seq.	State	Statute	State Animal Health Authority
Penalties.	Requires a service	§ 46-10-100	State	Statute	
Caution in use of pesticides or in eradication methods.	Requires a service	§ 46-10-110	State	Statute	
Cotton producer referendum.	Requires a service	§ 46-10-120	State	Statute	

**These responses were submitted for the FY 2020-2021 Accountability Report by the
CLEMSON UNIVERSITY - PSA**

Description	Purpose	Law Number	Jurisdiction	Type	Notes
Assessments and penalties against cotton growers.	Requires a service	§ 46-10-130	State	Statute	
Definitions.	Requires a service	§ 46-10-20	State	Statute	
Administration of chapter; rules and regulations.	Requires a service	§ 46-10-30	State	Statute	
Powers of commission.	Requires a service	§ 46-10-40	State	Statute	
Quarantines; hearings and notice.	Requires a service	§ 46-10-50	State	Statute	
Additional powers of commission.	Requires a service	§ 46-10-60	State	Statute	
Inspections.	Requires a service	§ 46-10-70	State	Statute	
Cooperation with federal and adjacent state agencies.	Requires a service	§ 46-10-80	State	Statute	
Certification of cotton growers' organization; eligibility requirements; certifying resolution; revocation.	Requires a service	§ 46-10-85	State	Statute	
Treatment or destruction of cotton.	Requires a service	§ 46-10-90	State	Statute	
Financial responsibility required for commercial applicator's license.	Requires a service	§ 46-13-100	State	Statute	
Reporting of accidents and incidents.	Requires a service	§ 46-13-110	State	Statute	
Records as to use of restricted use pesticides.	Requires a service	§ 46-13-120	State	Statute	
Reciprocity.	Requires a service	§ 46-13-130	State	Statute	
Exemptions from licensing requirements.	Requires a service	§ 46-13-140	State	Statute	
Pesticide advisory committee.	Requires a service	§ 46-13-150	State	Statute	
Information and courses of instruction.	Requires a service	§ 46-13-160	State	Statute	
Inspection of premises; legal actions; "stop sale, use, or removal" orders.	Requires a service	§ 46-13-170	State	Statute	
Discretion to make pesticides available for minor uses.	Requires a service	§ 46-13-175	State	Statute	
Penalties.	Requires a service	§ 46-13-180	State	Statute	
Prosecution of criminal violators; use of counsel.	Requires a service	§ 46-13-185	State	Statute	
Subpoenas.	Requires a service	§ 46-13-190	State	Statute	
Definitions.	Requires a service	§ 46-13-20	State	Statute	
Adjudication of alleged violations; disposal of condemned pesticides or devices.	Requires a service	§ 46-13-200	State	Statute	
Judicial review.	Requires a service	§ 46-13-210	State	Statute	
Delegation of authority to employees of Clemson University.	Requires a service	§ 46-13-220	State	Statute	
Disposition of fees.	Requires a service	§ 46-13-230	State	Statute	
Federal, interstate, and intrastate cooperation.	Requires a service	§ 46-13-240	State	Statute	
Duties delegated to Director.	Requires a service	§ 46-13-30	State	Statute	
Registration of pesticides and devices.	Requires a service	§ 46-13-40	State	Statute	
Pesticide registration fees; classes of fees.	Requires a service	§ 46-13-45	State	Statute	
Licensing of pesticide dealers.	Requires a service	§ 46-13-50	State	Statute	
Regulation of structural pest control activity.	Requires a service	§ 46-13-55	State	Statute	
Standards for certification of pesticide applicators; applicators' licenses.	Requires a service	§ 46-13-60	State	Statute	
Classification of certified applicators' licenses.	Requires a service	§ 46-13-70	State	Statute	

**These responses were submitted for the FY 2020-2021 Accountability Report by the
CLEMSON UNIVERSITY - PSA**

Description	Purpose	Law Number	Jurisdiction	Type	Notes
Expiration and renewal of licenses.	Requires a service	§ 46-13-80	State	Statute	
Denial, suspension, revocation, or modification of licenses and certificates.	Requires a service	§ 46-13-90	State	Statute	
Foundation seed program.	Requires a service	§ 46-21-665	State	Statute	
Definitions.	Requires a service	§ 46-23-20	State	Statute	
Commission may prevent introduction and dissemination of noxious weeds in State; remedies of owner of property destroyed or disposed of; regulations.	Requires a service	§ 46-23-30	State	Statute	
Quarantines.	Requires a service	§ 46-23-40	State	Statute	
Commissioner may detect and prevent spread of noxious weeds.	Requires a service	§ 46-23-50	State	Statute	
Inspections and seizures.	Requires a service	§ 46-23-60	State	Statute	
Cooperation with other governments and agencies.	Requires a service	§ 46-23-70	State	Statute	
Penalty.	Requires a service	§ 46-23-80	State	Statute	
Delegation of duties to director.	Requires a service	§ 46-23-90	State	Statute	
Penalties for plant nutrient deficiencies and other acts; appeals; distribution of penalty sums to consumers.	Requires a service	§ 46-25-1010	State	Statute	
Determination and publication of commercial values to use in assessing penalties.	Requires a service	§ 46-25-1060	State	Statute	
Penalty for shortage in weight.	Requires a service	§ 46-25-1080	State	Statute	
Forfeiture for selling, transporting, or receiving improperly branded, tagged, or misbranded fertilizer.	Requires a service	§ 46-25-1090	State	Statute	
Actions by State to recover fines and penalties; liens.	Requires a service	§ 46-25-1100	State	Statute	
Seller deemed agent for service of process on out-of-state manufacturer.	Requires a service	§ 46-25-1110	State	Statute	
Analysis of fertilizer ordered sold.	Requires a service	§ 46-25-1120	State	Statute	
Remission of certain penalties.	Requires a service	§ 46-25-1130	State	Statute	
"Stop sale, use, or removal" orders.	Requires a service	§ 46-25-1140	State	Statute	
Distribution of adulterated fertilizer prohibited.	Requires a service	§ 46-25-1150	State	Statute	
Use of regulated materials not meeting requirements prohibited; penalties.	Requires a service	§ 46-25-1160	State	Statute	
Civil penalty in addition to other penalties.	Requires a service	§ 46-25-1170	State	Statute	
Definitions.	Requires a service	§ 46-25-20	State	Statute	
Registration of fertilizer; application; fee.	Requires a service	§ 46-25-210	State	Statute	
When registration and sale may be prohibited.	Requires a service	§ 46-25-240	State	Statute	
Revocation or refusal of registration for fraud.	Requires a service	§ 46-25-250	State	Statute	
Exclusive use of brand name or trademark.	Requires a service	§ 46-25-260	State	Statute	
Guaranteed analysis of certain plant nutrients.	Requires a service	§ 46-25-30	State	Statute	
Rules and regulations.	Requires a service	§ 46-25-40	State	Statute	
Information required on containers or with bulk shipments.	Requires a service	§ 46-25-410	State	Statute	

**These responses were submitted for the FY 2020-2021 Accountability Report by the
CLEMSON UNIVERSITY - PSA**

Description	Purpose	Law Number	Jurisdiction	Type	Notes
Commission to delegate duties to director; director to administer and enforce chapter and promulgate regulations.	Requires a service	§ 46-25-45	State	Statute	
Sales between and to importers, registrants, and manipulators.	Requires a service	§ 46-25-50	State	Statute	
Sale or distribution of certain superphosphate prohibited.	Requires a service	§ 46-25-510	State	Statute	
Regulations concerning minimum standards for certain fertilizer material.	Requires a service	§ 46-25-520	State	Statute	
Filler.	Requires a service	§ 46-25-540	State	Statute	
Wet or bad mechanical condition.	Requires a service	§ 46-25-570	State	Statute	
Relief from liability of registrant for distributor's alteration of content or labeling of fertilizer.	Requires a service	§ 46-25-60	State	Statute	
Misbranding.	Requires a service	§ 46-25-70	State	Statute	
Analyses of official samples; inspectors, chemists and other personnel; reports.	Requires a service	§ 46-25-710	State	Statute	
Entering premises; inspecting and sampling.	Requires a service	§ 46-25-720	State	Statute	
Certain information to be published.	Requires a service	§ 46-25-75	State	Statute	
Penalties for violations of chapter.	Requires a service	§ 46-25-80	State	Statute	
Inspection tax and tonnage reports; collection fee.	Requires a service	§ 46-25-810	State	Statute	
Fertilizer inspection fee.	Requires a service	§ 46-25-815	State	Statute	
Annual registration fee and inspection tax on packages containing ten pounds or less.	Requires a service	§ 46-25-820	State	Statute	
Registration of separately identified products.	Requires a service	§ 46-25-825	State	Statute	
Reports of sales to nonregistrants.	Requires a service	§ 46-25-830	State	Statute	
Financial statement or bond; records.	Requires a service	§ 46-25-840	State	Statute	
Examination of registrant's records.	Requires a service	§ 46-25-850	State	Statute	
Information confidential.	Requires a service	§ 46-25-860	State	Statute	
Exemptions.	Requires a service	§ 46-25-870	State	Statute	
Definitions.	Requires a service	§ 46-35-15	State	Statute	
Petition for removal or destruction of trees.	Requires a service	§ 46-35-20	State	Statute	
Citation to show cause against removal or destruction.	Requires a service	§ 46-35-30	State	Statute	
Service of citation.	Requires a service	§ 46-35-40	State	Statute	
Order for removal or destruction of trees; service.	Requires a service	§ 46-35-50	State	Statute	
Destruction or removal of trees when owner fails to do so.	Requires a service	§ 46-35-60	State	Statute	
Enforcement.	Requires a service	§ 46-35-70	State	Statute	
Disclosure requirements relative to sale of orchards.	Requires a service	§ 46-35-80	State	Statute	
Powers of Commission; rules and regulations.	Requires a service	§ 46-37-20	State	Statute	
Commission to delegate duties to director; authority of director.	Requires a service	§ 46-37-25	State	Statute	
Inspection; removal or destruction of bees, beekeeping fixtures and appliances.	Requires a service	§ 46-37-30	State	Statute	

**These responses were submitted for the FY 2020-2021 Accountability Report by the
CLEMSON UNIVERSITY - PSA**

Description	Purpose	Law Number	Jurisdiction	Type	Notes
Introduction of used fixtures regulated.	Requires a service	§ 46-37-40	State	Statute	
Penalty.	Requires a service	§ 46-37-50	State	Statute	
Reporting animal diseases caused by chemical or other terrorism	Requires a service	§ 46-7-100	State	Statute	
Animal waste management training and certification programs.	Requires a service	§ 46-7-110	State	Statute	Education of owners and operators of animal facility
Assent to act of Congress for appropriations for experiment stations (1962)	Funding agency deliverable(s)	§ 46-7-50	State	Statute	Experiment Station funding
Receipt and use of grants under act to further development of extension work.	Funding agency deliverable(s)	§ 46-7-70	State	Statute	Cooperative Extension Service Funding
Assent to act of Congress providing for research and cooperative extension work (1962)	Funding agency deliverable(s)	§ 46-7-80	State	Statute	Experiment Station and Extension funding
Receipt and use of grants under act providing for research and cooperative extension work (1962)	Funding agency deliverable(s)	§ 46-7-90	State	Statute	Experiment Station and Extension funding
Fines deposited to credit of State Treasury.	Requires a service	§ 46-9-100	State	Statute	
Local ordinances void.	Requires a service	§ 46-9-110	State	Statute	
Reporting of agricultural product diseases caused by chemical or other terrorism.	Requires a service	§ 46-9-120	State	Statute	
Definitions	Requires a service	§ 46-9-15	State	Statute	
Appointment of State Entomologist and State Plant Pathologist.	Requires a service	§ 46-9-20	State	Statute	
Confidentiality of business information; penalties for unlawful disclosure or use of information.	Requires a service	§ 46-9-30	State	Statute	
Confidentiality of business information; penalties for unlawful disclosure or use of information.	Requires a service	§ 46-9-35	State	Statute	
Authority to promulgate and enforce regulations; other powers of commission.	Requires a service	§ 46-9-40	State	Statute	
Delegation of duties of commission to director; powers and duties of director.	Requires a service	§ 46-9-50	State	Statute	
Powers and duties of commission upon finding or suspecting infestation; quarantines; effect of quarantines.	Requires a service	§ 46-9-60	State	Statute	
Police powers of commission, assistants, deputies, and agents; violations reported to commission.	Requires a service	§ 46-9-70	State	Statute	
Penalties for interfering with commission, director, deputies, assistants, or agents.	Requires a service	§ 46-9-80	State	Statute	
Penalties for violating chapter; denial, suspension, revocation, or modification of license or certificate; civil penalties; hearing on suspension; judicial appeal not to act as stay of penalty; authority of commission to enforce its ordinances and regulations in court.	Requires a service	§ 46-9-90	State	Statute	
Tuberculosis and paratuberculosis tests required for all animals except those for immediate slaughter.	Requires a service	§ 47-11-100	State	Statute	
Establishment of slaughter assembly points.	Requires a service	§ 47-11-110	State	Statute	
Liability of person removing livestock for slaughter.	Requires a service	§ 47-11-120	State	Statute	

**These responses were submitted for the FY 2020-2021 Accountability Report by the
CLEMSON UNIVERSITY - PSA**

Description	Purpose	Law Number	Jurisdiction	Type	Notes
Infected or exposed animals or poultry.	Requires a service	§ 47-11-130	State	Statute	
Services of veterinarians provided for auctions; cost of tests.	Requires a service	§ 47-11-140	State	Statute	
Promulgation and enforcement of regulations.	Requires a service	§ 47-11-150	State	Statute	
Enforcement.	Requires a service	§ 47-11-160	State	Statute	
Violations.	Requires a service	§ 47-11-170	State	Statute	
Permits; fees; operation without a permit is a misdemeanor.	Requires a service	§ 47-11-20	State	Statute	
Application for permit; approval of changes in operating and ownership.	Requires a service	§ 47-11-30	State	Statute	
Bond.	Requires a service	§ 47-11-60	State	Statute	
Facilities regulations; inspections; penalties.	Requires a service	§ 47-11-70	State	Statute	
Records; identification required of persons selling at market; livestock haulers exempt from licenses.	Requires a service	§ 47-11-80	State	Statute	
Identification of animals sold in public livestock market or equine sales facility.	Requires a service	§ 47-11-85	State	Statute	
Brucellosis testing.	Requires a service	§ 47-11-90	State	Statute	
Sale of biological products containing living disease-producing agent.	Requires a service	§ 47-13-110	State	Statute	
Definitions.	Requires a service	§ 47-13-1210	State	Statute	
Authority and functions of commission.	Requires a service	§ 47-13-1220	State	Statute	
Promulgation of regulations by commission; poultry advisory committee.	Requires a service	§ 47-13-1230	State	Statute	
Penalties.	Requires a service	§ 47-13-1240	State	Statute	
Appropriation of funds in event of outbreak of diseases in animals and poultry.	Requires a service	§ 47-13-130	State	Statute	
Definitions.	Requires a service	§ 47-13-1310	State	Statute	
State veterinarian and Livestock-Poultry Service to develop and institute programs for control of equine infectious anemia.	Requires a service	§ 47-13-1315	State	Statute	
Official tests.	Requires a service	§ 47-13-1330	State	Statute	
Reporting of tests.	Requires a service	§ 47-13-1340	State	Statute	
Unlawful for horse to enter State unless tested; rules and regulations.	Requires a service	§ 47-13-1350	State	Statute	
Quarantine of exposed horses.	Requires a service	§ 47-13-1360	State	Statute	
Disposition of animal after second confirmatory test.	Requires a service	§ 47-13-1365	State	Statute	
Proof of tests required for public assembly of horses.	Requires a service	§ 47-13-1370	State	Statute	
Preventive measures for race tracks, horse shows, rodeos, horse owners, and veterinarians.	Requires a service	§ 47-13-1380	State	Statute	
False certificates unlawful; penalties.	Requires a service	§ 47-13-1390	State	Statute	
Additional penalties for violation of article.	Requires a service	§ 47-13-1400	State	Statute	
Quarantine against importing slaughtered meat or poultry from disease-affected areas.	Requires a service	§ 47-13-150	State	Statute	
Powers and duties of commission.	Requires a service	§ 47-13-20	State	Statute	

**These responses were submitted for the FY 2020-2021 Accountability Report by the
CLEMSON UNIVERSITY - PSA**

Description	Purpose	Law Number	Jurisdiction	Type	Notes
Penalties for violations of chapter.	Requires a service	§ 47-13-30	State	Statute	
Notice to disinfect; violation is a misdemeanor.	Requires a service	§ 47-13-310	State	Statute	
Orders to disinfect animals exposed to cattle fever tick.	Requires a service	§ 47-13-320	State	Statute	
Venue of prosecutions under Section 47-13-310.	Requires a service	§ 47-13-340	State	Statute	
Indemnity payments for killing of certain animals.	Funding agency deliverable(s)	§ 47-13-360	State	Statute	
Blank forms used to certify test results.	Requires a service	§ 47-13-370	State	Statute	
Appointment of appraisers of animals to be killed.	Requires a service	§ 47-13-380	State	Statute	
Procedure in event prescribed appraisal method is unsatisfactory to owner.	Requires a service	§ 47-13-390	State	Statute	
Form and payment of appraisements.	Funding agency deliverable(s)	§ 47-13-400	State	Statute	
Procedure when animal killed because exposed to contagion or infection.	Requires a service	§ 47-13-410	State	Statute	
Expenses of appraisal.	Requires a service	§ 47-13-420	State	Statute	
Indemnity for animals condemned for foot and mouth disease, vesicular exanthema, or rinderpest.	Funding agency deliverable(s)	§ 47-13-430	State	Statute	
"Brucellosis" defined; declaring animal infected.	Requires a service	§ 47-13-510	State	Statute	
"Approved accredited veterinarian" defined.	Requires a service	§ 47-13-520	State	Statute	
Conduct of control.	Requires a service	§ 47-13-530	State	Statute	
Exposed or suspected animals subject to quarantine.	Requires a service	§ 47-13-540	State	Statute	
Vaccination.	Requires a service	§ 47-13-550	State	Statute	
Tattooing or branding of vaccinated animals.	Requires a service	§ 47-13-560	State	Statute	
Sale of vaccine.	Requires a service	§ 47-13-570	State	Statute	
Sale of cattle generally.	Requires a service	§ 47-13-580	State	Statute	
Sale of infected animals.	Requires a service	§ 47-13-590	State	Statute	
Sale of diseased livestock or fowl unlawful.	Requires a service	§ 47-13-60	State	Statute	
Liability for sale of infected animal except for slaughter.	Requires a service	§ 47-13-600	State	Statute	
Veterinarian shall require testing of suspected animals.	Requires a service	§ 47-13-610	State	Statute	
Compulsory tests of cattle.	Funding agency deliverable(s)	§ 47-13-620	State	Statute	
Blood samples to be drawn by veterinarian.	Requires a service	§ 47-13-630	State	Statute	
Report and branding of infected animals.	Requires a service	§ 47-13-640	State	Statute	
Cooperation with United States Department of Agriculture; inspectors.	Requires a service	§ 47-13-650	State	Statute	
Reports.	Requires a service	§ 47-13-660	State	Statute	
Enforcement of rules and regulations.	Requires a service	§ 47-13-670	State	Statute	
Violations.	Requires a service	§ 47-13-680	State	Statute	
Cooperation of State with federal government in paying indemnity for infected cattle.	Funding agency deliverable(s)	§ 47-13-690	State	Statute	
Tuberculosis and paratuberculosis declared contagious and infectious; animals subject to quarantine.	Requires a service	§ 47-13-810	State	Statute	

**These responses were submitted for the FY 2020-2021 Accountability Report by the
CLEMSON UNIVERSITY - PSA**

Description	Purpose	Law Number	Jurisdiction	Type	Notes
Tuberculin and paratuberculin tests; observation.	Requires a service	§ 47-13-820	State	Statute	
Quarantine of herds in which reactors are found.	Requires a service	§ 47-13-830	State	Statute	
Branding and slaughtering of reacting animals; disinfecting quarters and equipment.	Requires a service	§ 47-13-840	State	Statute	
Liability for disposing of affected animal except for immediate slaughter.	Requires a service	§ 47-13-850	State	Statute	
Official tests.	Requires a service	§ 47-13-860	State	Statute	
Inspectors; accepting assistance from United States Government.	Requires a service	§ 47-13-870	State	Statute	
Violations.	Requires a service	§ 47-13-880	State	Statute	
Violations.	Requires a service	§ 47-17-100	State	Statute	
Permit required; fee; application; refusal, revocation, or suspension.	Requires a service	§ 47-17-120	State	Statute	
Rules and regulations.	Requires a service	§ 47-17-130	State	Statute	
Article inapplicable to transactions regulated under Federal Meat Inspection Act; cooperation with Federal, state, and local agencies; inadequate personnel.	Requires a service	§ 47-17-140	State	Statute	
Cost of inspection.	Requires a service	§ 47-17-150	State	Statute	
Definitions.	Requires a service	§ 47-17-20	State	Statute	
Antemortem and postmortem inspections; quarantine, segregation, and reinspection; condemnation of unwholesome livestock and meat.	Requires a service	§ 47-17-30	State	Statute	
Unlawful importation of foreign meat containing communicable diseases.	Requires a service	§ 47-17-310	State	Statute	
Enforcement; confiscation and destruction of meat.	Requires a service	§ 47-17-320	State	Statute	
Sanitary conditions and practices required in slaughtering and processing establishments.	Requires a service	§ 47-17-40	State	Statute	
Official inspection marks and other information on or accompanying containers and carcasses.	Requires a service	§ 47-17-50	State	Statute	
Prohibited acts.	Requires a service	§ 47-17-60	State	Statute	
Slaughtering or processing except in compliance with article prohibited.	Requires a service	§ 47-17-70	State	Statute	
Records.	Requires a service	§ 47-17-80	State	Statute	
Exemptions from provisions requiring inspection by Director.	Requires a service	§ 47-17-90	State	Statute	
Persons required to keep records.	Requires a service	§ 47-19-100	State	Statute	
Registration with director required of persons engaged in poultry related businesses.	Requires a service	§ 47-19-110	State	Statute	
Violations; interference with person performing official duties under chapter.	Requires a service	§ 47-19-120	State	Statute	
Notice of violations and opportunity to be heard.	Requires a service	§ 47-19-130	State	Statute	
Exemptions.	Requires a service	§ 47-19-140	State	Statute	
Limiting entry of poultry products into inspected establishments.	Requires a service	§ 47-19-150	State	Statute	

**These responses were submitted for the FY 2020-2021 Accountability Report by the
CLEMSON UNIVERSITY - PSA**

Description	Purpose	Law Number	Jurisdiction	Type	Notes
Application of chapter to pigeons.	Requires a service	§ 47-19-165	State	Statute	
Rules and regulations.	Requires a service	§ 47-19-170	State	Statute	
Costs of inspection.	Requires a service	§ 47-19-180	State	Statute	
Definitions	Requires a service	§ 47-19-20	State	Statute	
Voluntary inspection programs for certain birds by the Livestock-Poultry Health Commission.	Requires a service	§ 47-19-25	State	Statute	
Designation of state agency for cooperating with Secretary of Agriculture under Federal Poultry Products Inspection Act.	Requires a service	§ 47-19-30	State	Statute	
Permits for slaughtering and packaging poultry; fees.	Requires a service	§ 47-19-35	State	Statute	
Inspection of live poultry, carcasses and poultry products; quarantine, segregation and reinspection; condemnation and destruction or reprocessing of adulterated carcasses.	Requires a service	§ 47-19-40	State	Statute	
Sanitary conditions and practices required in slaughtering and processing establishments.	Requires a service	§ 47-19-50	State	Statute	
Information required on containers and carcasses; styles and sizes of type; definitions and standards; false or misleading marking or labeling.	Requires a service	§ 47-19-60	State	Statute	
Prohibited acts.	Requires a service	§ 47-19-70	State	Statute	
Processing except in compliance with chapter is prohibited.	Requires a service	§ 47-19-80	State	Statute	
Poultry and poultry products not intended for use as human food need not be inspected.	Requires a service	§ 47-19-90	State	Statute	
Definitions	Requires a service	§ 47-22-20	State	Statute	
Duties of commission and director	Requires a service	§ 47-22-30	State	Statute	
Permit required for operation of transfer center and rendering processes.	Requires a service	§ 47-22-40	State	Statute	
Permit applications; information required; permit valid until revoked, relinquished, or abandoned.	Requires a service	§ 47-22-50	State	Statute	
Location and equipment requirements for transfer centers, rendering plants, and vehicles used to transfer raw materials.	Requires a service	§ 47-22-60	State	Statute	
Inspections; hours; information required to be available	Requires a service	§ 47-22-70	State	Statute	
Violations; penalties.	Requires a service	§ 47-22-80	State	Statute	
Penalty for illegal transportation of livestock or poultry; civil liability.	Requires a service	§ 47-4-100	State	Statute	
Police power of commission members and agents; livestock law enforcement officers; employment, removal, duties; bond.	Requires a service	§ 47-4-110	State	Statute	
Inhibition of livestock inspection; penalty.	Requires a service	§ 47-4-120	State	Statute	
Violation of provision of Title 47 is a misdemeanor; penalties; enforcement of commission regulations in court.	Requires a service	§ 47-4-130	State	Statute	
Disposition of fines and fees.	Requires a service	§ 47-4-140	State	Statute	
Advisory committees.	Requires a service	§ 47-4-150	State	Statute	

**These responses were submitted for the FY 2020-2021 Accountability Report by the
CLEMSON UNIVERSITY - PSA**

Description	Purpose	Law Number	Jurisdiction	Type	Notes
Confidential information; exemptions.	Requires a service	§ 47-4-170	State	Statute	
Definitions.	Requires a service	§ 47-4-20	State	Statute	
Promulgation and enforcement of rules and regulations; permitted operations.	Requires a service	§ 47-4-30	State	Statute	
Delegation of duties to director.	Requires a service	§ 47-4-40	State	Statute	
Promulgation of regulations listing diseases; reporting suspected existence of disease.	Requires a service	§ 47-4-50	State	Statute	
Certificate of veterinary inspection; requirement for out-of-state livestock or poultry; quarantine of uncertified animals; exceptions.	Requires a service	§ 47-4-60	State	Statute	
Quarantine of livestock or poultry; violation; penalty; segregation of animals; liens; abandoned animals.	Requires a service	§ 47-4-70	State	Statute	
Condemned and destroyed livestock or poultry; indemnification of owner.	Funding agency deliverable(s)	§ 47-4-80	State	Statute	
Stop of livestock transport to check for proper documentation.	Requires a service	§ 47-4-90	State	Statute	
Definitions.	Requires a service	§ 47-6-20	State	Statute	
Authority of state veterinarian and Livestock-Poultry Health Service of Clemson University.	Requires a service	§ 47-6-30	State	Statute	
Notification; investigation; public notice; elimination of disease from herd.	Requires a service	§ 47-6-40	State	Statute	
Imported swine.	Requires a service	§ 47-6-50	State	Statute	
Violation of chapter as misdemeanor; penalties.	Requires a service	§ 47-6-60	State	Statute	
Provides for Clemson to operate and administer a Boll Weevil Eradication Program.	Requires a service	46-10-10 et seq	State	Statute	Enforcement of State Regulations
Provides for Clemson to operate a pesticide program in South Carolina.	Requires a service	46-13-10 et seq	State	Statute	Enforcement of State Regulations
Provides for Clemson to operate a program of seed and plant certification to foster the production and distribution of pure varieties of seed and plants in South Carolina.	Requires a service	46-21-610 et seq.	State	Statute	Requires Clemson to have a Seed and Plant Certification program.
Provides for Clemson to regulate noxious weeds throughout the state.	Requires a service	46-23-10 et seq	State	Statute	Enforcement of State Regulations
Provides for Clemson to regulate the inspection, analysis, distribution and sale of commercial fertilizers.	Requires a service	46-25-10 et seq	State	Statute	Enforcement of State Regulations
Agricultural liming materials and landplaster	Requires a service	46-26-10 thru 46-26-170	State	Statute	
Shipment and Sale of Trees, Plants, and Shrubs	Requires a service	46-33-10 thru 46-33-100	State	Statute	
Provides the Director of Regulatory and Public Service Programs shall regulate neglected or abandoned fruit orchards in the State.	Requires a service	46-35-10 et seq	State	Statute	Enforcement of State Regulations
Provides for Clemson to regulate the shipment and movement of honey bees throughout the state.	Requires a service	46-37-10 et seq	State	Statute	Enforcement of State Regulations
Provides for the creation of the State Crop Pest Commission to carry out the regulation and/or eradication of certain plant pests and diseases.	Requires a service	46-9-10 et seq	State	Statute	Enforcement of State Regulations

These responses were submitted for the FY 2020-2021 Accountability Report by the					
CLEMSON UNIVERSITY - PSA					
Description	Purpose	Law Number	Jurisdiction	Type	Notes
Establishes the State Livestock Poultry Health Commission; delegates authority to State Veterinarian, establishes penalties for violations and further authority to promulgate regulations.	Requires a service	47-4-10 et seq	State	Statute	State Animal Health Authority

**FY 2020-2021 Agency Accountability Report
Services Responses:**

**These responses were submitted for the FY 2020-2021 Accountability Report by the
CLEMSON UNIVERSITY - PSA**

Description of Service	Description of Direct Customer	Customer Name	Others Impacted By the Service	Agency unit providing the service	Description of agency unit	Primary negative impact if service not provided
Protects health and marketability of livestock and poultry and products in the state, inspects meat and poultry products in state inspected plants and protects public health in SC.	All animal agriculture (Poultry, Beef, Dairy, Swine, Equine, Sheep, Goats, Meat slaughter and processing, Zoos, etc.) & veterinarians	Animal industry producers, processors, and consumers, and veterinarians	National and international animal industry producers, processors and consumers.	Livestock-Poultry Health Programs	Ensures the continued health of the livestock and poultry industry, ensure safe, wholesome, properly labeled meat and poultry products.	Animal health more at risk to foreign animal and emerging diseases in the livestock and poultry industries; unable to ensure safe, wholesome properly labeled meat and poultry products.
Protects health and marketability of livestock and poultry and products in the state, inspects meat and poultry products in state inspected plants and protects public health in SC.	All animal agriculture (Poultry, Beef, Dairy, Swine, Equine, Sheep, Goats, Meat slaughter and processing, Zoos, etc.) & veterinarians	Animal industry producers, processors, and consumers, and veterinarians	National and international animal industry producers, processors and consumers.	Livestock-Poultry Health Programs	Ensures the continued health of the livestock and poultry industry, ensure safe, wholesome, properly labeled meat and poultry products.	Animal health more at risk to foreign animal and emerging diseases in the livestock and poultry industries; unable to ensure safe, wholesome properly labeled meat and poultry products.
Scientists work to improve the quality of life for people in South Carolina, the nation, and the world by providing science-based information on major issues facing decision makers.	Producers, Commercial and small farmers; academic institutions; researchers	Ag and natural resources government agencies and NGOs.	Agencies, scientists, farmers, ranchers, homeowners, and general population depending on topic.	Clemson Experiment Station	Conducts research to identify critical issues and find solutions through research that support South Carolina's agriculture and forest industries.	Decreased economic returns and/or negative impacts on sustainability and the environment.
Agents meet the diverse needs of S. C. citizens by delivering research-based information on Agrisystems Productivity and Profitability, Environmental and Natural Resource Conservation, Food Safety and Nutrition, Agribusiness, and 4-H Youth Development.	Youth ages 5-19 --- All gender, all Economic Income levels, all education levels; Adult audience --- commercial and small farmers, landowners, professionals, all gender, all income levels, all education levels	SC Citizens	All Citizens	Cooperative Extension Service	Improve the economy, environment, and well-being of South Carolinians through the delivery of unbiased research-based information and education.	Decreased economic returns, decreased crop production, decrease in sustainable practices, decreased quality of life due to chronic health conditions, decreases in youth development opportunities

These responses were submitted for the FY 2020-2021 Accountability Report by the

CLEMSON UNIVERSITY - PSA

Description of Service	Description of Direct Customer	Customer Name	Others Impacted By the Service	Agency unit providing the service	Description of agency unit	Primary negative impact if service not provided
The Department of Pesticide Regulation works to protect health, property, and our environment by promoting the safe and proper use of pesticides. Our programs include applicator licensing and education, pesticide container recycling, integrated pest management in schools, endangered species protection, and the worker protection program. Pesticide Regulation is the enforcement and investigative authority in South Carolina for pesticide use, alleged pesticide misuse, substandard termite treatments, and the South Carolina Wood Infestation Report.	All pesticide users	Citizens of South Carolina	South Carolina agricultural businesses	Dept. of Pesticide Regulation	Regulatory and Public Service Agency with Clemson University	Citizens of South Carolina being taken advantage of and not having any legal recourse
The Department of Plant Industry's Seed Program works to serve the farmers who grow certified seed crops. The service is to provide inspections/approvals/ disapprovals by AOSCA standards for crop to be certified in the program.	Growers	Citizens of South Carolina and all farmers in the state	South Carolina agricultural businesses	Dept. of Plant Industry - Seed Program	Regulatory and Public Service Agency with Clemson University	Seeds not being certified and the farmers not getting the yield that they need for economy
The Department of Plant Industry's Fertilizer Program aims to control quality and guarantees of all fertilizer, lime, landplaster sold in South Carolina.	All farmers or purchasers of fertilizer in South Carolina	Citizens of South Carolina and all farmers in the state	South Carolina agricultural businesses	Dept. of Plant Industry - Fertilizer Program	Regulatory and Public Service Agency with Clemson University	Fertilizer not being what the label states and the farmers not getting the yield that they need for economy
The Department of Plant Industry's Fertilizer Program works to serve the industry for all fertilizers/lime/ and landplaster manufacturers and dealers in South Carolina by AAPFCO recognized guidelines.	Fertilizer Industry	Citizens of South Carolina and all farmers in the state	South Carolina agricultural businesses	Dept. of Plant Industry - Fertilizer Program	Regulatory and Public Service Agency with Clemson University	Fertilizer, lime and landplaster not being at standard what the label states and the farmers not getting the yield that they need for economy
To provide information and analytical testing of soil, plant tissue, feed and forage, animal waste, irrigation water, and compost.	Individual clients, commercial dealers, Extension Agents, Extension Specialists, and researchers in South Carolina	Citizens of South Carolina, commercial dealers, Extension Agents, and specialists along with researchers	South Carolina agricultural businesses	Agricultural Service Lab	Regulatory and Public Service Agency with Clemson University	This protects the consumer to make sure the soil is tested and the yield of the crop is plentiful

Agency Partnerships Responses:

These responses were submitted for the FY 2020-2021 Accountability Report by the

CLEMSON UNIVERSITY - PSA

Name of Partner Entity	Type of Partner Entity	Description of Partnership
SC County Governments	Local Government	Quarterly meetings allows partners to communicate planned activities and share opportunities for partnering.
SC Elementary, Middle and High Schools	K-12 Education Institute	To provide educational programming (i.e. school enrichment, field trips, after school programs)
SC Department of Natural Resources	State Government	Partnered to provide technical assistance with workshops, programs, and field days.
SC Department of Education	K-12 Education Institute	Co-hosted a hands-on workshop for the School Gardening program
Natural Resources Conservation Service	Federal Government	Partnered to provide technical assistance with workshops, programs, and field days.
Soil and Water Conservation Service	Federal Government	Partnered to provide technical assistance with workshops, programs, and field days.
SC Department of Agriculture	State Government	Partnered to provide technical assistance with workshops, programs, and field days.
SC Peanut Growers	Non-Governmental Organization	Partnered to provide technical assistance with workshops, programs, and field days.
Piedmont Technical College	Higher Education Institute	Offer adult education and professional development for entrepreneurs
Gullah Farmers Cooperative	Non-Governmental Organization	Partnership to apply for Socially Disadvantaged Groups Grant through USDA
Allendale Correctional Institute	Local Government	Provide information on entrepreneurship, business planning and agribusiness
Daufuskie Island Conservancy	Non-Governmental Organization	Present information to local residents on backyard design for wildlife
South Carolina Forestry Commission	State Government	Partnered to provide technical assistance with workshops, programs, and field days.
Greenville Health System	Private Business Organization	Partnered to help provide health, wellness, nutrition and food information
AnMed Health	Private Business Organization	Partnered to help provide health, wellness, nutrition and food information
Tractor Supply	Private Business Organization	Partnered to provide technical assistance with workshops, programs, and field days.
Briggs & Stratton Corporation	Private Business Organization	Supplied training materials and engines for youth engagement programs
Quality Deer Management Association	Non-Governmental Organization	Partnered to deliver online content concerning the management of white-tailed deer and assisted with food plot projects
SC State Fair	Private Business Organization	Partnered to deliver information on scrapies in sheep, 4-H programs, tractor driving CDE and gardening
ArborGen	Private Business Organization	Partnered to provide technical assistance with workshops, programs, and field days.
Department of Health and Environmental Control	State Government	Partnered to deliver information to staff on various aspects of natural resources management
South Carolina Master Gardeners	Professional Association	Work with 4-H Gardening Project and also with county gardening programs in the schools
USDA	Federal Government	The USDA funds Experiment Station projects and all research results are reported annually to the USDA. The Pee Dee REC has partnered to promote integrated land management that includes space for wildlife, farming, and forestry through the Wildlife Habitat Incentives Program (WHIP). The Pee Dee REC serves as a demonstration site to local farmers considering adding wildlife habitat to their farms. The Pee Dee REC is home to two USDA-ARS faculty members and two professional staff. USDA-ARS faculty study similar subjects as their Pee Dee REC counterparts, including cotton research and water management.
South Carolina State University	Higher Education Institute	Funding and program partners on the SET IV Program which is designed to develop regional agriculture, food system and rural economic development initiatives
North Carolina State University	Higher Education Institute	Pee Dee REC faculty member Dr. Francis Reay-Jones is currently working with Dr. Hannah Burrack of North Carolina State University to investigate the biology and pest status of the tobacco splitworm.
Catawba Farm and Food Coalition	Non-Governmental Organization	Partner to promote the purchase of locally grown and produced foods, to keep valuable agricultural land in production, to ensure the economic viability of farms, to benefit public and environmental health and to strengthen our regional economy.
Pee Dee Land Trust	Non-Governmental Organization	Partnered to provide technical assistance with workshops, programs, and field days.
Center for Heirs Property Preservation	Non-Governmental Organization	Partnered to provide technical assistance with workshops, programs, and field days.
SC Department of Agriculture	State Government	Partnered to provide educational programming. DPR works closely with the DoA as a result of mutual interests concerning SC agriculture. Partners with the Agribusiness Team to grow the agriculture industry in SC overall in commercial agriculture production and local food systems.
SC State Parks	State Government	Partnered to provide technical assistance with workshops, programs, and field days.
Arbor One Farm Credit	Professional Association	Partnered to provide technical assistance with workshops, programs, and field days.
ArborGen		0 Partnered to provide technical assistance with workshops, programs, and field days.
AgSouth	Professional Association	Partner to provide educational programming
USDA APHIS VS	Federal Government	Livestock & Poultry Animal Health disease prevention, surveillance, control and eradication
USDA FSIS	Federal Government	Matching funds and oversight of state meat inspection
SC DHEC	State Government	Collaboration on zoonotic disease reporting and testing

These responses were submitted for the FY 2020-2021 Accountability Report by the

CLEMSON UNIVERSITY - PSA

Name of Partner Entity	Type of Partner Entity	Description of Partnership
Clemson University Police Department	State Government	Serves as training support, firearms, legal update, maintain officer personnel files. Through their terminal load DPR arrest warrants into the NCIC database.
SC Dept. of Natural Resources	State Government	Often conduct joint criminal investigations of environmental crimes with DNR Law Enforcement. Partner to prevent and control wildlife diseases.
US EPA	Federal Government	Through a cooperative agreement, DPR serves as the State Lead Agency charged with investigating civil and criminal violations of the Federal Insecticide, Fungicide and Rodenticide Act.
SC State Diagnostic and Veterinary Lab	State Government	Provides laboratory analysis of investigative samples pertaining to domestic or animal kills as a result of accidental or intended pesticide poisonings. Also performs all necropsies on animals that are suspected of being intentionally, illegally poisoned by a pesticide.
SC Attorney General	State Government	DPR CID maintains a close working relationship with Assistant Attorney General assigned to environmental crimes. AG provides legal advice, assists in the drafting of search and arrest warrants, prosecutes all DPR cases assigned to General Sessions Trials, and prepares Departmental indictments for officer testimony in front of the Grand Jury.
SCPCA	Professional Association	Work closely with SCPCA which is a member-funded, non-profit organization committed to protecting public health, food and property from pests.
AAPCO	Professional Association	Oversees the State FIFRA Issues Research and Evaluation Group (SFIREG). SFIREG and it's working committees provide a platform for the states and EPA to resolve challenges to successful implementation of pesticide programs and policies in the USA and territories.
ASPCRO	Professional Association	Promote better understanding and efficiency in the administration of laws and other written documents of regulatory authority between states concerning the control and eradication of pests of structures and their immediate environs.
SLED	State Government	DPR and the SC Law Enforcement Division have developed an exceptional working relationship by way of a seamless exchange of information with the agents that operate the Fusion Center. SLED provides potential lifesaving information through NCIC data and criminal history information of targets of criminal investigations. DPR – CID law enforcement all hold their commission through SLED.
Criminal Justice Academy	State Government	Provides initial training and certification of all DPR certified law enforcement officers. SCCJA provides periodic training and yearly re-certifications.
SC DMV	State Government	Supplies crucial vehicle and driver information which enables DPR to run vehicle license plates. Access to this restricted information is through a joint agreement between DPR, DMV and SLED.
ES EPA	Federal Government	Criminal Investigations Division Special Agents routinely work with DPR law enforcement where the interests of the state of SC and the United States Government coincide.
EPA CID	Federal Government	Provides periodic firearms trainings, presents talks on the fourth amendment. Special agents accompany DPR law enforcement on occasion into the field to work parallel investigations.
US Dept. of Homeland Security	Federal Government	Has on multiple occasions ask for the assistance of DPR agents to run joint investigations where pesticides are being shipped illegally into the US from other countries of origin.
US Customs and Border Patrol	Federal Government	Contact DPR agents when shipments of mis-branded, illegal or otherwise questionable pesticides are processed through Customs.
USGS South Carolina Cooperative Fish and Wildlife Research Unit	Federal Government	Conduct research focused on conservation and ecology of seabirds and shorebirds, and wildlife conservation physiology relevant to South Carolina.

FY 2020-2021 Agency Accountability Report
Reports Responses:

These responses were submitted for the FY 2020-2021 Accountability Report by the
CLEMSON UNIVERSITY - PSA

Report Name	Law Number (If required)	Summary of Information Requested in the Report	Most Recent Submission Date	Reporting Frequency	Type of Entity	Method to Access the Report	Direct access hyperlink or agency contact
Annual Report of Accomplishments	5 U.S.C. 301; 31 U.S.C. 901-903; 7 CFR 2.28.	Annual report of accomplishments for research and extension	4/1/2021	Annually	Entity within federal government	Available on agency's website	https://nifa.usda.gov/resource/reports
Comprehensive Review and Determination Report - South Carolina		Comprehensive: 1- Statutory Aurtherity and Food Safety Regulations; 2- Inspection; 3- Product Sampling; 4- Stafing, Training, and Supervision; 5- Humane Handling; 6- Compliance; 7- Laboratory Methods and Quality Assurance Program; 8- Civil Rights; 9- Financial Accountability	11/01/2020	Annually	Entity within federal government	Available on another website	https://www.fsis.usda.gov/sites/default/files/media_file/2021-02/state-review-south-carolina.pdf
Final and progress reports on all NIFA related projecs	5 U.S.C. 301; 31 U.S.C. 901-903; 7 CFR 2.28.	Progress of research on 5-year federal projects	3/1/2021	Annually	Entity within federal government	Available on agency's website	https://nifa.usda.gov/tool/report