

AGENCY NAME:	SC Governor's School for Science and Mathematics		
AGENCY CODE:	H650	SECTION:	010

2022
Accountability Report

SUBMISSION FORM

I have reviewed and approved the data submitted by the agency in the following templates:

- Data Template
 - Reorganization and Compliance
 - FY2022 Strategic Plan Results
 - FY2023 Strategic Plan Development
 - Legal
 - Services
 - Partnerships
 - Report or Review
 - Budget
- Discussion Template
- Organizational Template

I have reviewed and approved the financial report summarizing the agency's budget and actual expenditures, as entered by the agency into the South Carolina Enterprise Information System.

The information submitted is complete and accurate to the extent of my knowledge.

AGENCY DIRECTOR <i>(SIGN AND DATE):</i>	SIGNATURE ON FILE	Signature Received: 9/15/2022 11:49
<i>(TYPE/PRINT NAME):</i>	Daniel S. Dorsel, President	

BOARD/CMSN CHAIR <i>(SIGN AND DATE):</i>	SIGNATURE ON FILE	Signature Received: 9/15/2022 11:49
<i>(TYPE/PRINT NAME):</i>	Robert Brown, Chairman, Board of Trustees	

AGENCY NAME:	SC Governor's School for Science and Mathematics		
AGENCY CODE:	H65	SECTION:	010

AGENCY'S DISCUSSION AND ANALYSIS

Mission Statement

GSSM seeks out and advances our state's most talented and motivated students, offering a transforming education in science, mathematics, and engineering that cultivates joy in learning and builds the confidence to engage as ethical leaders with the world's most significant issues.

Vision Statement

We will be recognized as a national leader in K-12 science and mathematics education, known for developing students who are exceptionally well-prepared to engage in global issues as creative and ethical leaders.

GSSM Values

- *Development and well-being of the whole student*
- *Sense of community between students and faculty/staff*
- *Open communication*
- *Quality curriculum*
- *Supporting education statewide*

Accountability Report Highlights:

GSSM is Strong and Growing Stronger – Residential Students and Graduates:

- *100% admitted to college*
- *77% of alumni works in STEM fields*
- *77% of alumni works in their field of study*
- *70% of alumni pursue advanced degrees*
- *84% of alumni major in a STEM field*
- *37% of alumni are currently in careers in SC*

Strong – Alumni

- *Engineers*
- *Corporate careers - examples: Google, Microsoft, General Electric, Westinghouse, Exxon*
- *Scientists*
- *Medical careers*
- *Entrepreneurs*
- *Academics*

GSSM Source of Strength – Faculty / Staff

- *Credentialed and accomplished (All have Masters, 90% hold PhD's)*
- *Exemplify excellence and expect it from others*
- *Faculty and staff define their success by students' success*
- *Shared goals, clear responsibilities*
 - *Learning and mastery*
 - *Growth and maturity*
 - *College and life*

AGENCY NAME:	SC Governor's School for Science and Mathematics		
AGENCY CODE:	H65	SECTION:	010

Virtual Engineering

Accelerate, TEAM UP, and SVC

- *Graduated seventh class of seniors who completed the Accelerate program and the first class of students who completed the TEAM UP engineering program*
- *10 Accelerate students participated in GSSM's mentored summer research experiences with GSSM students*
- *Added 2 new partners for 2022-2023 (Kingstree High School in Williamsburg County and Bridges Preparatory Academy)*
- *Synchronous Virtual Courses (SVCs) offered during the 2021-2022 school year included honors Algebra 1 & 2 and honors Geometry. Students from Dorchester School District 4 and the Lexington County School District One participated in the courses.*

GSSM Foundations for the Future

- *Research & Inquiry*
 - *Rising seniors have access to both summer and school-year mentored research & inquiry experiences – 16% of the Residential Program Class of 2023 is scheduled to participate in multiple research & inquiry experiences. 100% of the Residential Program*
 - *Resumed international research opportunities in Germany with 7 GSSM students participating in research in the areas of cancer biology, computer science, and mathematical modeling.*
 - *Continued strengthening and expansion of research site partners at academic institutions – e.g., Clemson University, University of South Carolina, MIT, MUSC, Furman University, Winthrop University, College of Charleston, Wofford College, etc., business – e.g., – as well as businesses and government agencies like Kyocera AVX, CPM Federal Credit Union, Integrated Systems, Nephron Pharmaceuticals, etc., and government agencies – e.g., SC Department of Natural Resources. – In the Summer of 2022, GSSM students participated in research at 38 different institutions in South Carolina, four other states, and two other countries.*
 - *Continued diversification of fields represented in student research & inquiry opportunities which include molecular biology, biomedical research, engineering, material science, chemistry, computer science, robotics, cybersecurity, nanoscience, ecology, psychology, archaeology, sociology, economics, and more.*
 - *Growth of school year research opportunities continues. On-going projects include Microwave Spectroscopy, Computational Drug Discovery, Restoration Ecology, Multimodal Transport Engineering and Computational Mathematics.*
 - *Establishment of the GSSM Hydroponic Research Lab will enable student engagement in research projects in agriculture, plant biology, automation, data science, engineering, and more – as well as enhanced lab experience opportunities for existing classes and Outreach engagements.*

Academic Highlights:

1. Course offerings
 - a. 135 courses offered as semester or year-long courses.
 - b. 71 are STEM courses.
 - c. 22 are College Board approved AP courses.
 - d. 20 are courses for which an AP course is a pre-requisite.
 - e. 24 are dual enrolled courses.

AGENCY NAME:	SC Governor's School for Science and Mathematics		
AGENCY CODE:	H65	SECTION:	010

2. Junior and Senior Seminar Series of one-hour per week courses
 - a. Juniors take Life and Leisure, Academic Transition, College Planning I, Public Speaking, Introduction to Research and Survival Skills.
 - b. Seniors take College Planning II.

3. Dual-enrollment course agreements with Coker University and Francis Marion University remain strong and courses are added as appropriate.

4. Launchpad
 - a. A two-week Summer bridge program prior to arriving in the fall for a select group of rising juniors admitted to GSSM has continued to provide targeted instruction in math and English as well as life outside of the classroom.
 - b. Program helps students be better prepared to handle the rigors of the academic program at GSSM, especially in the areas of Math, English and Science labs.
 - c. Program also includes a transitional piece to help students adjust to living in a residential setting.

5. Accelerate Engineering, TEAM UP, and Synchronous Virtual Courses (SVCs)

Accelerate is a statewide virtual dual enrollment Engineering program for 10th, 11th & 12th Graders. Participants have the opportunity to earn up to 53 hours of college science, English, mathematics and engineering credits through Coker University. This program was designed to prepare the next generation of leaders in fields of engineering. Accelerate Engineering had 107 students enrolled and the enrollment for the third year of our Teaching Engaging and Advancing Minds for Undergraduate Preparedness (TEAM UP) virtual engineering program was 23 for a total enrollment of 130 students. TEAM UP was created for the purpose of broadening the participation of SC students in GSSM's virtual engineering programs by offering a sequence of honors courses focused on exposing students to a breadth of engineering topics and preparing the students for college majors in engineering.

 - The 7th Annual Completion Celebration was held in May for 23 students completing Accelerate and the first cohort of 10 students completing TEAM UP. These students represented 27 schools across the state. Eighty-eight percent of the Class of 2022 will attend 5 different SC colleges.
 - Accelerate state school district partnerships include 14 SC districts representing, 43 schools, and the 7 SC Congressional Districts. This includes 2 new partner schools for the 2022-2023 school year. The new partner schools are Kingstree High School in Williamsburg County and Bridges Preparatory Academy, a charter school in the southern-most part of the I-95 corridor.
 - Access to GSSM summer research programs for rising seniors continued for all the Accelerate and TEAMUP students. Eight students conducted research with GSSM students at the University of South Carolina and Clemson University. Accelerate students may continue their summer research projects through their Accelerate senior engineering design process class in the fall semester.

Outreach Center Overview

The GSSM Center for Science Education & Outreach is a leader in the development and delivery of exemplary programs that are designed to improve and support the STEM achievement of students and the professional growth of teachers across South Carolina. The Outreach Center is a statewide resource of STEM learning opportunities and experiences for SC students and teachers.

To continue offering outstanding programs to students and teachers across the state, the Outreach Center team focuses on the following key elements and builds programs that focus on a set of foundational goals. The key elements for developing and delivering STEM learning opportunities are as follows: 1) focusing on the needs of students and teachers and striving for excellence; 2) building mutually beneficial

AGENCY NAME:	SC Governor's School for Science and Mathematics		
AGENCY CODE:	H65	SECTION:	010

partnerships; 3) collaborating with multiple individuals and groups; and 4) developing public-private support.

The foundational goals are as follows: 1) developing students' understanding of the relationship between science, technology, engineering, mathematics, and society; 2) improving the problem-solving and reasoning skills of students; 3) providing opportunities for students and teachers to explore real-world applications of science, technology, engineering, and mathematics; 4) improving content knowledge and pedagogical content knowledge of science and mathematics teachers; 5) encouraging students to explore careers and post-secondary majors in the areas of science, technology, engineering, and mathematics; and 6) encouraging students to consider GSSM as a STEM educational option.

GSSM Outreach is a source for increasing GSSM student involvement in the development and delivery of programs and expanding the Outreach Center's STEM education impact on students and teachers across the state for the foreseeable future. Each year over one hundred GSSM students are involved in the programs and collaborating with the Center for Outreach. The Center's endeavors are developed and delivered from the support of the State, SC businesses, and private foundations.

The combined total statewide impact of students, teachers, and parents served by the Outreach Center through a variety of learning opportunities and experiences that were delivered either virtually or in person during the school year and summer was 4,254.

2021-2022 Academic Year (AY) Outreach Center Impact

The Outreach Center was able to restart many of its in-person program offerings conducting programs on the GSSM campus as well as campuses of schools across the state. The Outreach Center provided a variety of 184 STEM learning opportunities and experiences to 3,303 students, teachers, & parents during the academic year. The programs included our SPARK and ENGAGE after school programs, professional development opportunities for teachers, an interactive STEAM bus that travels to elementary schools, the Explore series interactive elementary STEM kits, delivering inquiry-based STEM lesson at schools, and our annual INSIDE GSSM day where families across the state have the opportunity to experience GSSM while participating in interactive activities led by our faculty, staff, and students.

2022 Summer Outreach Center Impact

The Outreach Center was able to increase the number of summer STEM learning opportunities by offering six of its iTEAMS technology-based day camps delivered in partner schools, four of its CREATEng engineering day camps, three weeks of its GoSciTech residential STEM camp, and 4 weeks of its live two-way interactive virtual project-based Summer STEM program. A total of 951 students participated in the summer programs. These students represented 37 of the state's 46 counties.

Below are several quotes from students who participated in 2022 Outreach Center summer programs and their parents. These comments demonstrate the impact the summer programs are having on young SC students.

Students:

"I truly loved it all, but if I had to choose I would probably choose coding lights and the dance [on the mBot]. They were REALLY fun, but then again it was all amazing. I would do it all over again in a heartbeat and I would recommend this camp. Thank you so much!"

"I had a good time because this is my future career. My favorite part was learning how to code."

"My favorite part was learning about coding and game designing. Because now I can code and design my own games.

AGENCY NAME:	SC Governor's School for Science and Mathematics		
AGENCY CODE:	H65	SECTION:	010

“My favorite part of the CREATEng program was touring the Michelin plant. I enjoyed viewing the process of making tires and how they determine what to make them out of. I enjoyed this part of the camp because I love seeing how things are made and what makes them work.”

“I loved the interactive part of the class. Whereas math is usually confined to pencil and paper, my teacher integrated many creative and exciting activities that brought the math to life. For example, we created a Mobius strip as a class that offered a different perspective on one sided shapes.”

“My favorite part of Summer STEM was the ocean acidification because it made me feel like a scientist and I really liked working with the different materials.”

“The best thing that I liked about camp was making new friends as well as learning more advanced forms of things that I am learning in my regular school. I definitely felt that I came out of this camp ahead of any other students at my regular school and that I will have an easier time when these subjects come up in school.”

Parents

“She was really excited about the whole process of how robots work. She was the most excited that I had ever seen her about anything. She loved the competitions and making new friends.”

“He enjoyed working with students from throughout the district. He also enjoyed learning to actually use programming language, because he didn't have a great deal of prior experience with that. He also enjoyed his instructor.”

“She wants to be an engineer so she was in her element. She enjoyed being able to work with a partner but loved being able to talk to others and "trouble shoot" ideas. She would love to participate in another camp, probably on GSSM campus next year.”

“My daughter really loved the camp! She enjoyed the teachers at GoSciTech and their willingness to make sure every student had a fulfilling experience through the week.”

“He appreciated the professor and his choices of experiments and expertise. He had a great time at this camp and learned a lot. He is expressing a greater interest in chemistry now.”

Student Research Programs: SPRI & RESP:

GSSM provided summer mentored research & inquiry opportunities (Summer Program for Research Interns; SPRI) to all students either required or choosing to participate. GSSM Research & Inquiry has continued to innovate to provide significant opportunities to students, diversify experiences, expand school-year research opportunities, extend the network of research partners, include Accelerate, TEAM UP & STEM Foundations program students, and increase the sustainability of GSSM's research & inquiry programming.

AGENCY NAME:	SC Governor’s School for Science and Mathematics		
AGENCY CODE:	H65	SECTION:	010

- 146 students in the Class of 2023 participated in summer mentored research & inquiry experiences.
 - 135 Residential program students.
 - 8 Accelerate/TEAM UP program students.
 - 3 STEM Foundations program students.
- GSSM students conducted research at 38 sites in South Carolina, Virginia, North Carolina, Massachusetts, Georgia, Colombia, and Germany in the Summer of 2022 in 99 different research groups.
- Among GSSM Class of 2023 Students in all programs who participated in a summer mentored research & inquiry experience:
 - 92% participated in person. Most students participating remotely worked with research groups who normally work remotely.
 - 95% report increased understanding of the research process.
 - 96% report increased understanding of their field of research.
 - Among a population already highly inclined toward STEM careers, 60% report increased likelihood that they would pursue a STEM career (97.5% reported no change or an increase).
- 29% of Residential Class of 2023 students are scheduled to participate in one or more on-campus, school year research opportunity.
 - 89% of these students are doing so in addition to participating in a summer mentored research & inquiry experience or a conflicting experience associated with their school-year research.

The GSSM Research Experience Scholars Program (RESP) is an international component of the summer mentored research & inquiry program and is discussed below under “Student Global Learning Opportunities & Experiences.

Student Global Learning Opportunities & Experiences:

The GSSM Research Experience Scholars Program (RESP) is an international component of the summer mentored research & inquiry program. In the Summer of 2022, three GSSM Residential program students participated in research at the German Cancer Research Center (Heidelberg, Germany) in partnership with the Johanna Wittum Schule (Pforzheim, Germany). Three visiting students from Johanna Wittum Schule are conducting research in molecular genetics and nutrition with Clemson University. Four GSSM Residential program students participated in research (two) at the Fraunhofer Institute of Experimental Software Engineering (Kaiserslautern, Germany) and (two) at the Fraunhofer Institute of Industrial Mathematics (Kaiserslautern, Germany) in partnership with the Gymnasium am Rittersberg (Kaiserslautern, Germany).

AGENCY NAME:	SC Governor's School for Science and Mathematics		
AGENCY CODE:	H65	SECTION:	010

Student Development:

Athletics

- During the 2021-22 school year, approximately 67% of GSSM students participated in interscholastic athletics including basketball, cross country, golf, swimming, soccer, track, and volleyball.
- For the 2022 Academic Year, GSSM earned five region championships: Volleyball, Men's Cross Country, Women's Cross Country, Women's Track, and Men's Golf.
- A chapter of the Fellowship of Christian Athletes were started and met regularly.

Campus Life

- During the 2021-22 school year, over 60 clubs, organizations, and societies were registered with the Office of the Dean of Students service organizations, academic teams, special interest groups, and clubs representing various disciplines.
- Our student clubs and organizations, along with the SAC Coordinator, the Residence Life Coordinators, and Resident Assistants sponsored a full complement of diverse programs and activities for students, including festivals, cultural celebrations, and awareness/service initiatives.
- Efforts to assist students in developing skills focused on global citizenship and inclusion continue.
- Workshops were held to assist students and the advisors o clubs and organizations in effectively carrying out their duties.

Risk Assessment and Mitigation Strategies:

- GSSM provides uniquely advanced education opportunities in multiple settings to highly capable students around the state. Our goals and objectives should enhance quality, availability, and access statewide. Failure to meet these goals would mean that the school is not providing top-tier education, that its programs are not available in areas where students who need them, or that where they are available, they are not equally accessible to all students.
- Thanks to historically strong support from the state legislature, private partnerships, and an active community of parents and alumni, the school is well-positioned to achieve its goals with excellence. Continued support of our programs, especially the growth of our Outreach initiatives, is key to our ability to identify and nurture talented students to lead the state's knowledge economy.

AGENCY NAME:

SC Governor's School for Science and Mathematics

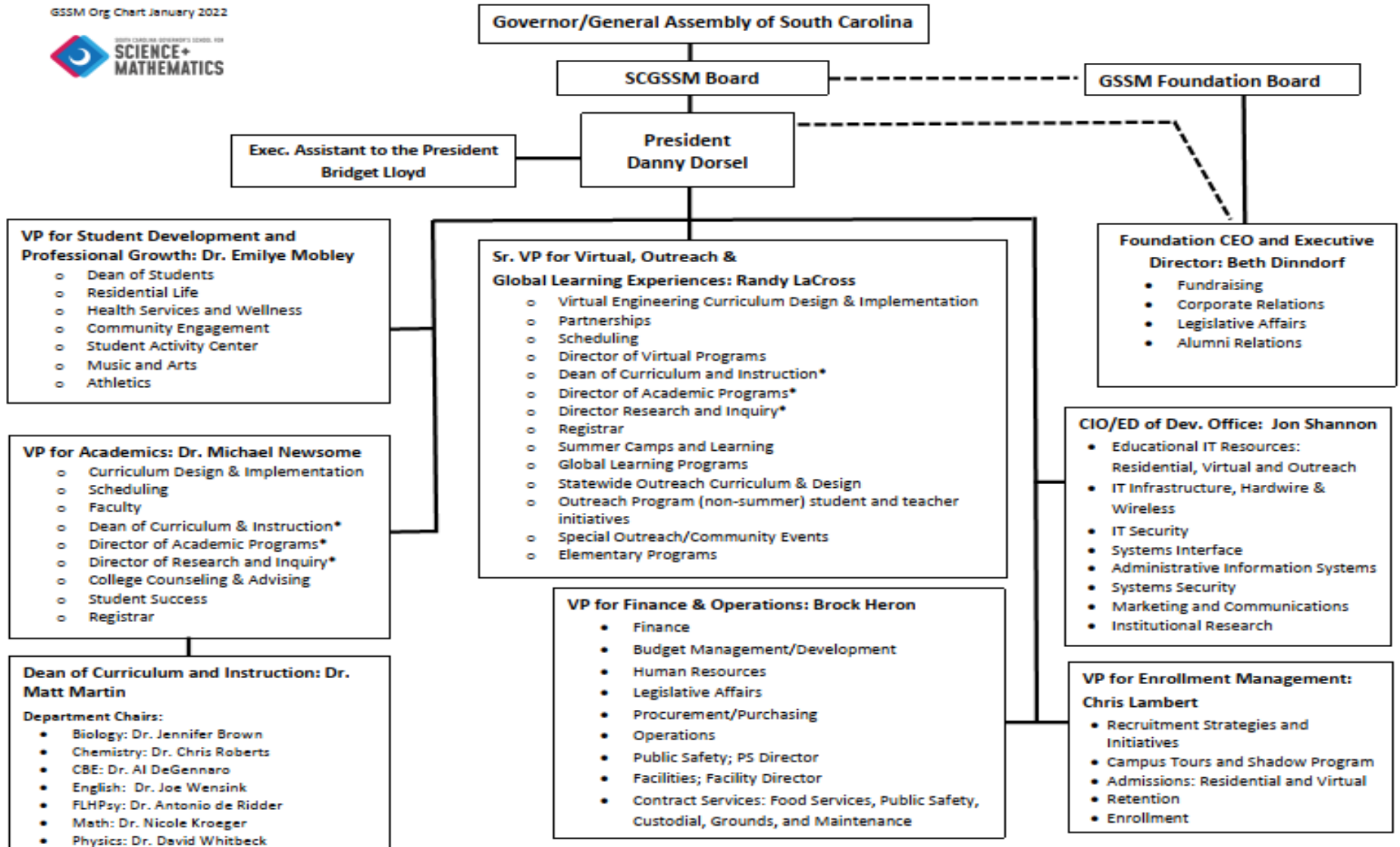
AGENCY CODE:

H65

SECTION:

010

GSSM Org Chart January 2022



*Dual reporting line to VP for Academics and SVP for Virtual and Outreach

FY2022

Reorganization and Compliance

as submitted for the Accountability Report by:

H650 - GOVERNOR'S SCHOOL FOR SCIENCE AND MATH

Primary Contact

First Name	Last Name	Role/Title	Email Address	Phone
Brock	Heron	Vice President for Finance & Operations	bheron@governors.school	843-383-3906

Secondary Contact

First Name	Last Name	Role/Title	Email Address	Phone
Thomasina	Wilson	Business Office Coordinator	wilson@governors.school	843-383-3946

Agency Mission

Adopted in:

2018

GSSM seeks out and advances our state's most talented and motivated students, offering a transforming education in science, mathematics, and engineering that cultivates joy in learning and builds the confidence to engage as ethical leaders with the world's most significant issues.

Agency Vision

Adopted in:

2018

We will be recognized as a national leader in K-12 science and mathematics education, known for developing students who are exceptionally well-prepared to engage in global issues as creative and ethical leaders.

Recommendations for reorganization requiring legislative change:

None

Agency intentions for other major reorganization to divisions, departments, or programs to allow the agency to operate more effectively and efficiently in the succeeding fiscal year:

We have moved our virtual programs under academics instead of a stand-alone department.

Significant events related to the agency that occurred in FY2022

Description of Event	Start	End	Agency Measures Impacted	Other Impacts
There were no significant events that impacted GSSM during the 2021 - 2022 fiscal year.				

Is the agency in compliance with S.C. Code Ann. § 2-1-220, which requires submission of certain reports to the Legislative Services Agency for publication online and the State Library? (See also S.C. Code Ann. § 60-2-20).

Yes

Reason agency is out of compliance: (if applicable)

Is the agency in compliance with various requirements to transfer its records, including electronic ones, to the Department of Archives and History? See the Public Records Act (S.C. Code Ann. § 20-1-10 through 20-1-180) and the South Carolina Uniform Electronic Transactions Act (S.C. Code Ann. § 26-6-10 through 26-10-210).

Yes

Does the law allow the agency to promulgate regulations?

No

Law number(s) which gives the agency the authority to promulgate regulations:

Has the agency promulgated any regulations?

No

Is the agency in compliance with S.C. Code Ann. § 1-23-120 (J), which requires an agency to conduct a formal review of its regulations every five years?

Yes

(End of Reorganization and Compliance Section)

FY2022

Strategic Plan Results

as submitted for the Accountability Report by:

H650 - GOVERNOR'S SCHOOL FOR SCIENCE AND MATH

- Goal 1** Provide the best advanced education for S.C.'s most selective students
- Goal 2** Operate a residential campus supportive of students in activities, character development and safety
- Goal 3** Lead in the development and delivery of statewide academic opportunities that support and improve achievement via GSSM Research and Outreach Center programs and initiatives

Perf. Measure Number	Description	Base	Target	Actual	Value Type	Desired Outcome	Time Applicable	Calculation Method	Data Source	Data Location	Stakeholder Need Satisfied	Primary Stakeholder	State Funded Program Number	Responsible	Notes
1.1 Provide the best credentialed and most experienced teachers in all subjects															
State Objective: Education, Training, and Human Development															
1.1.1	Hire teachers with minimum Master's degrees, PhD's preferred in their areas - appropriate to full-capacity growth of student body.	100%	100%	100%	Percent	Maintain	State Fiscal Year (July 1 - June 30).	% of Masters/PhD Faculty	School Records	Human Resources	A well-educated faculty experienced in higher education.	GSSM Students	5001.000000.000		
1.1.2	Maintain low student to teacher ratio, reported as average number of students per teacher.	9-1	9-1	9-1	Ratio	Maintain	State Fiscal Year (July 1 - June 30).	Students/Teachers	School Records	Human Resources	College level courses taught to high school students.	GSSM Students	5001.000000.000		
1.1.3	100% of GSSM grads admitted undergraduate school	100%	100%	100%	Percent	Maintain	Calendar Year (January 1 - December 31)	Number of students admitted to undergraduate school	School Records	College Counseling	Ensure that GSSM students will receive the opportunity for a postsecondary education.	GSSM Students	5001.000000.000		
1.2 Continually advance curriculum offerings in the residential, virtual and outreach programs															
State Objective: Education, Training, and Human Development															
1.2.1	Identify and attract larger pools of talented students to reach through outreach programs	2799	2925	3303	Count	equal to or greater than	Other	Number of virtual/outreach students	School Records	GSSM Outreach	Accessibility to GSSM educational programs.	South Carolina Students	5001.000000.000		As we have fully reestablished outreach programs, we have been able to serve more students.
1.2.2	Continue to maintain or increase engineering offerings at GSSM.	18	18	18	Count	equal to or greater than	0	Number of engineering courses at GSSM.	School Records	GSSM Academics	To prepare GSSM students for college engineering programs and engineering careers.	GSSM Students	5001.000000.000		
1.2.3	Identify and attract larger pools of talented students to reach through virtual programs	142	135	176	Count	equal to or greater than	Other	Number of Accelerate & TEAM UP students	School Records	GSSM Accelerate/TEAM UP	Provide STEM education to students in their home districts throughout the state.	South Carolina Students	5001.000000.000		The STEM scholars program has allowed us to reach more students.
1.2.4	Deliver foundational math and other STEM courses in a synchronous virtual format to students around the state	151	160	172	Count	equal to or greater than	Other	Number of SVC students (fall + spring)	School Records	GSSM Synchronous Virtual Courses (SVC)	Provide STEM education to students in their home districts throughout the state.	GSSM Virtual Students	5001.000000.000		The STEM scholars program has allowed us to reach more students.
1.3 Provide a safe and supportive teaching environment with technology															
State Objective: Education, Training, and Human Development															
1.3.1	Schedule facility repair in teaching spaces to allow for zero teaching downtime for instruction	0%	0%	0%	Percent	Maintain	State Fiscal Year (July 1 - June 30).	% of instructional time stopped due to facility issues	School Records	GSSM Operations	Avoid disruption of the educational process due to operational improvements.	GSSM Residential Students	5001.000000.000		
1.3.2	Upgrade IT networks and in-classroom/lab IT to support instruction	92%	92%	100%	Percent	equal to or greater than	State Fiscal Year (July 1 - June 30).	% of technology equipment and infrastructure within its useful life	School Records	GSSM IT	Provide students with high level technology to meet the needs of the curriculum	GSSM Students	5001.000000.000		
2.1 Conduct Extracurricular Programs appropriate to an academically-focused residential high school															
State Objective: Education, Training, and Human Development															
2.1.1	Increase student participation on athletic teams by providing sports that support student interests and abilities	72%	85%	75%	Percent	equal to or greater than	Other	% of residential students participating in SCHSL athletics	School Records	GSSM Residential	Provide opportunities for students to participate in athletic events on a interscholastic level.	GSSM Residential Students	5001.000000.000		Since coming back from COVID-19, we have had fewer students participating in interscholastic athletics.
2.1.2	Increase student participation in clubs and organizations by providing opportunities that match student interests and abilities	95%	96%	96%	Percent	equal to or greater than	Other	% of students involved in clubs and organizations	School Records	GSSM Residential	Provide opportunities for students to explore and develop other interests outside of class.	GSSM Residential Students	5001.000000.000		

Perf. Measure Number	Description	Base	Target	Actual	Value Type	Desired Outcome	Time Applicable	Calculation Method	Data Source	Data Location	Stakeholder Need Satisfied	Primary Stakeholder	State Funded Program Number Responsible	Notes
2.2 Create arts and music programs supporting students interests and talents		State Objective: Education, Training, and Human Development												
2.2.1	Maintain specialized art and music instructors to foster student development in art & music	2	2	2	Count	equal to or greater than	Other	Number of teachers for art and music	School Records	Human Resources	Provide opportunities for students to develop other talents and meet GSSM graduation requirements.	GSSM Residential Students	5001.000000.000	
2.3 Ensure physical and mental health of students		State Objective: Education, Training, and Human Development												
2.3.1	Provide mental health licensed professionals to support mental health of the students	2.5	2.5	2.5	Count	equal to or greater than	State Fiscal Year (July 1 - June 30).	Number of mental health professionals with a PhD/MD	School Records	Health Services	Provide students with well-trained mental health professionals on campus.	GSSM Residential Students	5001.000000.000	
2.3.2	Provide extensive qualified nursing services to include medication management	14	14	14	Count	equal to or greater than	Other	Number of weekday and weekend shifts nurses are available to provide health care	School Records	Health Services	Meet the health needs of our residential students on campus.	GSSM Residential Students	5001.000000.000	
3.1 Enhance GSSM's advanced research program opportunities for residential students		State Objective: Education, Training, and Human Development												
3.1.1	Increase diverse research opportunities at state, national and international universities and/or industrial sites	20	20	38	Count	equal to or greater than	Other	Number of research sites	School Records	GSSM Residential	Provide opportunities for students to learn outside the classroom through real-world research experiences.	GSSM Students	5001.000000.000	We have expanded our offerings as colleges and universities have reopened.
3.1.2	Provide research opportunities for virtual students	14	13	11	Count	equal to or greater than	Other	Number of virtual students participating in research	School Records	Accelerate Program	Provide opportunities for students to learn outside the classroom through real-world research experiences.	GSSM Virtual Students	5001.000000.000	
3.2 Enhance and expand high-quality statewide academic programs developed and delivered by the GSSM Outreach Center		State Objective: Education, Training, and Human Development												
3.2.1	Increase programs targeted to specific age and demographic groups	1027	60	60	Count	equal to or greater than	State Fiscal Year (July 1 - June 30).	Number of students participating in virtual classes	School Records	Outreach	Target both younger students and students in underserved areas of the state to experience STEM education both on-campus and at their home districts.	South Carolina School Districts	5001.000000.000	
3.2.2	Increase Outreach partners, both at schools & districts, and with business partners.	102	110	144	Count	equal to or greater than	State Fiscal Year (July 1 - June 30).	Number of school districts	School Records	GSSM Outreach	Provide opportunities for students to experience STEM education both on-campus and at their home districts.	South Carolina School Districts	5001.000000.000	As we have fully reestablished outreach programs, we have been able to partner with more schools and business.
3.2.3	Continue to grow Accelerate Engineering Statewide program	21	22	16	Count	equal to or greater than	Other	Number of sites participating for the Accelerate Engineering Program	School Records	GSSM Accelerate/TEAM UP	Expand STEM opportunities for our school districts.	South Carolina School Districts	5001.000000.000	

Strategic Plan Development

FY2023

as submitted for the Accountability Report by:

- Goal 1** Provide the best advanced education for S.C.'s most selective students
- Goal 2** Provide the best advanced education for S.C.'s most selective students
- Goal 3** Lead in the development and delivery of statewide academic opportunities that support and improve achievement via GSSM Research and Outreach Center programs and initiatives

H650 - GOVERNOR'S SCHOOL FOR SCIENCE AND MATH

Perf. Measure Number	Description	Base	Target	Value Type	Desired Outcome	Time Applicable	Calculation Method	Data Source	Data Location	Stakeholder Need Satisfied	Primary Stakeholder	State Funded Program Number Responsible	Notes
I.1 Provide the best credentialed and most experienced teachers in all subjects										State Objective: Education, Training, and Human Development			
1.1.1	Hire teachers with minimum Master's degrees, PhD's preferred in their areas - appropriate to full-capacity growth of student body.	100%	100%	Percent	Equal to or greater than	State Fiscal Year	% of Masters/PhD/Faculty	School Records	Human Resources	A well-educated faculty experienced in higher education.	GSSM Students	5001.000000.000	
1.1.2	Maintain low student to teacher ratio, reported as average number of students per teacher.	9-1	9-1	Ratio	Equal to or greater than	State Fiscal Year	Students/Teachers	School Records	Human Resources	College level courses taught to high school students.	GSSM Students	5001.000000.000	
1.1.3	100% of GSSM grads admitted undergraduate school	100%	100%	Percent	Equal to or greater than	Calendar Year	Number of students admitted to undergraduate school	School Records	College Counseling	Ensure that GSSM students will receive the opportunity for a postsecondary education.	GSSM Students	5001.000000.000	
I.2 Continually advance curriculum offerings in the residential, virtual and outreach programs										State Objective: Education, Training, and Human Development			
1.2.1	Identify and attract larger pools of talented students to reach through outreach programs	2800	2925	Count	Equal to or greater than	Other	Number of virtual/outreach students	School Records	GSSM Outreach	Accessibility to GSSM educational programs.	South Carolina Students	5001.000000.000	
1.2.2	Continue to maintain or increase engineering offerings at GSSM.	18	18	Count	Equal to or greater than	Other	Number of engineering courses at GSSM.	School Records	GSSM Academics	To prepare GSSM students for college engineering programs and engineering careers.	GSSM Students	5001.000000.000	
1.2.3	Identify and attract larger pools of talented students to reach through virtual programs	142	135	Count	Equal to or greater than	Other	Number of Accelerate, TEAM UP students and STEM Scholar students.	School Records	GSSM Accelerate/TEAM UP	Provide STEM education to students in their home districts throughout the state.	South Carolina Students	5001.000000.000	
1.2.4	Deliver foundational math and other STEM courses in a synchronous virtual format to students around the state	151	160	Count	Equal to or greater than	Other	Number of SVC students (fall + spring)	School Records	GSSM Synchronous Virtual Courses (SVC)	Provide STEM education to students in their home districts throughout the state.	GSSM Virtual Students	5001.000000.000	
I.3 Provide a safe and supportive teaching environment with technology										State Objective: Education, Training, and Human Development			
1.3.1	Schedule facility repair in teaching spaces to allow for zero teaching downtime for instruction	0%	0%	Percent	Equal to or less than	State Fiscal Year	% of instructional time stopped due to facility issues	School Records	GSSM Operations	Avoid disruption of the educational process due to operational improvements.	GSSM Residential Students	5001.000000.000	
1.3.2	Upgrade IT networks and in-classroom/lab IT to support instruction	92%	92%	Percent	Equal to or greater than	State Fiscal Year	% of technology equipment and infrastructure within its useful life	School Records	GSSM IT	Provide students with high level technology to meet the needs of the curriculum	GSSM Students	5001.000000.000	
2.1 Conduct Extracurricular Programs appropriate to an academically-focused residential high school										State Objective: Education, Training, and Human Development			

Perf. Measure Number	Description	Base	Target	Value Type	Desired Outcome	Time Applicable	Calculation Method	Data Source	Data Location	Stakeholder Need Satisfied	Primary Stakeholder	State Funded Program Number Responsible	Notes
2.1.1	Increase student participation on athletic teams by providing sports that support student interests and abilities	72%	75%	Percent	Equal to or greater than	Other	% of residential students participating in SCHSL athletics	School Records	GSSM Residential	Provide opportunities for students to participate in athletic events on an interscholastic level.	GSSM Residential Students	5001.000000.000	
2.1.2	Increase student participation in clubs and organizations by providing opportunities that match student interests and abilities	95%	96%	Percent	Equal to or greater than	Other	% of students involved in clubs and organizations	School Records	GSSM Residential	Provide opportunities for students to explore and develop other interests outside of class.	GSSM Residential Students	5001.000000.000	
2.2 Create arts and music programs supporting students interests and talents											State Objective: Education, Training, and Human Development		
2.2.1	Maintain specialized art and music instructors to foster student development in art & music	2	2	Count	Equal to or greater than	Other	Number of teachers for art and music	School Records	Human Resources	Provide opportunities for students to develop other talents and meet GSSM graduation requirements.	GSSM Residential Students	5001.000000.000	
2.3 Ensure physical and mental health of students											State Objective: Education, Training, and Human Development		
2.3.1	Provide mental health licensed professionals to support mental health of the students	2.5	2.5	Count	Equal to or greater than	State Fiscal Year	Number of mental health professionals with a PhD/MD	School Records	Health Services	Provide students with well-trained mental health professionals on campus.	GSSM Residential Students	5001.000000.000	
2.3.2	Provide extensive qualified nursing services to include medication management	14	14	Count	Equal to or less than	Other	Number of weekday and weekend shifts nurses are available to provide health care	School Records	Health Services	Meet the health needs of our residential students on campus.	GSSM Residential Students	5001.000000.000	
3.1 Enhance GSSM's advanced research program opportunities for residential students											State Objective: Education, Training, and Human Development		
3.1.1	Increase diverse research opportunities at state, national and international universities and/or industrial sites	20	20	Count	Equal to or greater than	Other	Number of research sites	School Records	GSSM Residential	Provide opportunities for students to learn outside the classroom through real-world research experiences.	GSSM Students	5001.000000.000	
3.1.2	Provide research opportunities for virtual students	14	13	Count	Equal to or greater than	Other	Number of virtual students participating in research	School Records	Accelerate Program	Provide opportunities for students to learn outside the classroom through real-world research experiences.	GSSM Virtual Students	5001.000000.000	
3.2 Enhance and expand high-quality statewide academic programs developed and delivered by the GSSM Outreach Center											State Objective: Education, Training, and Human Development		
3.2.1	Increase programs targeted to specific age and demographic groups	60	60	Count	Equal to or greater than	State Fiscal Year	Number of students participating in virtual classes	School Records	Outreach	Target both younger students and students in underserved areas of the state to experience STEM education both on-campus and at their home districts.	South Carolina School Districts	5001.000000.000	
3.2.2	Increase Outreach partners, both at schools & districts, and with business partners.	102	110	Count	Equal to or greater than	State Fiscal Year	Number of school districts	School Records	GSSM Outreach	Provide opportunities for students to experience STEM education both on-campus and at their home districts.	South Carolina School Districts	5001.000000.000	
3.2.3	Continue to grow Accelerate Engineering Statewide program	21	22	Count	Equal to or greater than	Other	Number of sites participating for the Accelerate Engineering Program	School Records	GSSM Accelerate/TEAM UP	Expand STEM opportunities for our school districts.	South Carolina School Districts	5001.000000.000	

FY2022

Budget Data

as submitted for the Accountability Report by:

H650 - GOVERNOR'S SCHOOL FOR SCIENCE AND MATH

State Funded Program No.	State Funded Program Title	Description of State Funded Program	(Actual) General	(Actual) Other	(Actual) Federal	(Actual) Total	(Projected) General2	(Projected) Other	(Projected) Federal4	(Projected) Total
5001.000000.000	Governor's School for Science and Mathematics	Education of academically talented students with accelerated instruction of STEM courses.	\$ 14,901,133.00	\$ 2,638,204.00	\$ -	\$ 17,539,337.00	\$ 14,833,728.00	\$ 2,701,735.00	\$ -	\$ 17,535,463.00

FY2022

Legal Data

as submitted for the Accountability Report by:

H650 - GOVERNOR'S SCHOOL FOR SCIENCE AND MATH

Law number	Jurisdiction	Type	Description	Purpose the law serves:	Notes:	Changes made during FY2022
59-48-10	State	Statute	Establishment of school.	Requires a service	Accelerated instruction in mathematics and science in a residential educational setting.	No Change
59-48-20	State	Statute	Board of trustees; appointment; term of office; compensation.	Board, commission, or committee on which someone from our agency must/may serve		No Change
CHAPTER 48. HISTORY: 1987 Act No. 170, Part II, Section 23.	State	Statute	Establish School and Governing Body 1987	Board, commission, or committee on which someone from our agency must/may serve		No Change
Proviso 1.88	State	FY 2021-22 Proviso	GSSM will develop a plan to operate the school separately from the Department of Education.	Requires a manner of delivery		No Change
Proviso 10.2	State	FY22-23 Proviso	10.2. (SDE: Governor's School Leave Policy) The South Carolina Governor's School for the Arts and Humanities and the South Carolina Governor's School for Science and Mathematics are authorized to promulgate administrative policy governing annual and sick leave relative to faculty and staff with the approval of their respective board of directors. This policy shall address their respective school calendars in order to comply with the instructional needs of students attending both special schools.	Requires a manner of delivery	Formerly Proviso 1.21	Amended Proviso Number Only
Proviso 10.3	State	FY22-23 Proviso	10.3. (SDE: Governor's Schools' Fees) The South Carolina Governor's School for the Arts and Humanities and the South Carolina Governor's School for Science and Mathematics are authorized to charge, collect, expend, and carry forward student fees as approved by their respective Board of Directors. The purpose and amount of any such fees will be to maintain program quality in both academics and residential support. No student will be denied admittance or participation due to financial inability to pay. The respective Board of Directors shall promulgate administrative policy governing the collection of all student fees. Both schools shall conspicuously publish a fee schedule on their respective websites. All student fees must be reported by August first of the current fiscal year to the Governor, the Chairman of the Senate Finance Committee, and the Chairman of the House Ways and Means Committee.	Funding agency deliverable(s)	Formerly Proviso 1.28	Amended
Proviso 10.4	State	FY22-23 Proviso	10.4. (SDE: Governor's Schools Residency Requirement) Of the funds appropriated, the Governor's School for the Arts and the Humanities and the Governor's School for Science and Mathematics are to ensure that a parent(s) or guardian(s) of a student attending either the Governor's School for the Arts and the Humanities or the Governor's School for Science and Mathematics must prove that they are a legal resident of the state of South Carolina at the time of application and must remain so throughout time of attendance. The Governor's School for the Arts and the Humanities and Governor's School for Science and Mathematics may not admit students whose parent(s) or guardian(s) are not legal residents of South Carolina.	Report our agency must/may provide	Formerly Proviso 1.43	Amended Proviso Number Only

Law number	Jurisdiction	Type	Description	Purpose the law serves:	Notes:	Changes made during FY2022
Proviso 10.5	State	FY22-23 Proviso	10.5. (SDE: Governor's Schools Informational Access to Students) For the current fiscal year, school districts must permit both the Governor's School for the Arts and Humanities and the Governor's School for Science and Mathematics to collaborate with individual schools and their staff to share information with students and families about the educational opportunities offered at the respective Governor's Schools, through avenues including school visits, informational presentations, and posters. By June thirtieth, of the current fiscal year, the Governor's School for the Arts and Humanities and the Governor's School for Science and Mathematics must report to the Chairman of the Senate Finance Committee and the Chairman of the House Ways and Means Committee the results of these Informational Access efforts. Further, the two Governor's Schools will work with districts, the Department of Education and School Report Card administrators, to ensure that SAT scores of current Governor's Schools' students are included in the School Report Card of those students' resident schools and districts.	Report our agency must/may provide	Formerly Proviso 1.58	Amended Proviso Number Only
Proviso 10.1	State	FY 2019-20 Proviso	10.1. (SDE: Governor's School for Science & Math) Any unexpended balance on June thirtieth of the prior fiscal year of funds appropriated to or generated by the Governor's School for Science and Mathematics may be carried forward and expended in the current fiscal year pursuant to the direction of the board of trustees of the school.	Funding agency deliverable(s)	Formerly Proviso 1.7	Amended Proviso Number Only
Proviso 117.15	State	FY22-23 Proviso	117.15. (GP: Allowance for Residences & Compensation Restrictions) That salaries paid to officers and employees of the State, including its several boards, commissions, and institutions shall be in full for all services rendered, and no perquisites of office or of employment shall be allowed in addition thereto, but such perquisites, commodities, services or other benefits shall be charged for at the prevailing local value and without the purpose or effect of increasing the compensation of said officer or employee. The charge for these items may be payroll deducted at the discretion of the Comptroller General or the chief financial officer at each agency maintaining its own payroll system. This shall not apply to the Governor's Mansion, nor to guards at any of the state's penal institutions and nurses and attendants at the Department of Disabilities and Special Needs, and registered nurses providing clinical care at the MUSC Medical Center, nor to the Superintendent and staff of John de la Howe School, nor to the cottage parents and staff of Wil Lou Gray Opportunity School, nor to full-time or part-time staff who work after regular working hours in the SLED Communications Center or Maintenance Area, nor to adult staff at the Governor's School for Science and Mathematics and the Governor's School for Arts and Humanities who are required to stay on campus by the institution because of job requirements or program participation. Any state institution of higher learning may provide complimentary membership privileges to employees who work at their wellness centers. The presidents of those state institutions of higher learning authorized to provide on-campus residential facilities for students may be permitted to occupy residences on the grounds of such institutions without charge.	Requires a manner of delivery		No Change
Proviso 117.43	State	FY22-23 Proviso	117.45. (GP: Facility Rental Fee) The Governor's School for the Arts and Humanities, Governor's School for Science and Mathematics, Wil Lou Gray Opportunity School, and John de la Howe School are authorized to charge, collect, expend and carry forward fees charged for facility and equipment rental and registration	Funding agency deliverable(s)		No Change

Law number	Jurisdiction	Type	Description	Purpose the law serves:	Notes:	Changes made during FY2022
Proviso 1A.4	State	FY22-23 Proviso	1A.4 (SDE-EIA: Teacher Salaries/State Agencies) Each state agency which does not contain a school district but has instructional personnel shall receive an appropriation as recommended by the Education Oversight Committee and funded by the General Assembly for teacher salaries based on the following formula: Each state agency shall receive such funds as are necessary to adjust the pay of all instructional personnel to the appropriate salary provided by the salary schedules of the school district in which the agency is located. Instructional personnel may include all positions which would be eligible for EIA supplements in a public school district, and may at the discretion of the state agency, be defined to cover curriculum development specialists, educational testing psychologists, psychological and guidance counselors, and principals. The twelve-month agricultural teachers located at Clemson University are to be included in this allocation of funds for base salary increases. The South Carolina Governor's School for the Arts and Humanities and the South Carolina Governor's School for Science and Mathematics are authorized to increase the salaries of instructional personnel by an amount equal to the percentage increase given by the School District in which they are both located.	Report our agency must/may provide		No Change

FY2022

Services Data

as submitted for the 2022 Accountability Report by:

H650 - GOVERNOR'S SCHOOL FOR SCIENCE AND MATH

Description of Service	Description of Direct Customer	Customer Name	Others Impacted by Service	Division or major organizational unit providing the service.	Description of division or major organizational unit providing the service.	Primary negative impact if service not provided.	Changes made to services during FY2022	Summary of changes to services
Advanced Educational Programs	General Public and subsections to include families with school-age children appropriate for GSSM program Participation.	South Carolina Students	Higher Education, Business Partners, General Public	Academics	Advanced Curriculum and Training	Fewer opportunities for advanced STEM education.	No Change	
Provide Residential Environment for Well-being and Development	Families with school-age children appropriate for GSSM program Participation.	South Carolina Students		Life in Residence	Provide Residential Environment for Well-being and development of students staying on-campus	High-level educational process will be compromised and hinder learning.	No Change	
Advanced Educational Programs - Statewide, grades 7-12, Teacher Development & Growth	General Public and subsections to include families with school-age children appropriate for GSSM program Participation.	South Carolina Students	Higher Education, Business Partners, General Public, School Districts	Outreach	Statewide Educational Programs for students and Teachers, to include Engineering, Summer Camps, 9th grade Algebra II, Professional Development for Teachers and Distance Education in Advanced Courses.	Fewer opportunities to expose younger students to STEM opportunities provide by GSSM.	No Change	
Meet Reporting and Stewardship Needs	General Public and taxpaying citizens of South Carolina	Taxpayers of South Carolina	Executive and Legislative Branch, General Public, Business Partners	Administration	Meet Reporting and Stewardship Needs	Risk of underspending or overspending in areas of GSSM.	No Change	

FY2022

Partnerships Data

as submitted for the 2022 Accountability Report by:

H650 - GOVERNOR'S SCHOOL FOR SCIENCE AND MATH

Type of Partner Entity	Name of Partner Entity	Description of Partnership	Change to the partnership during the past fiscal year
Private Business Organization	Business/Industry Partnerships	Outreach and Residential efforts and support to include Accelerate Engineering, Economics and Finance, Mandarin Chinese Foreign Language Instruction and many others	No Change
Higher Education Institute	Clemson University	Course equivalency agreements for course credit. Summer Advanced Research placements of GSSM students on campus and with University Scientists	No Change
Higher Education Institute	Coker University	Dual Enrollment agreements for course credit.	No Change
Higher Education Institute	College of Charleston	Summer Advanced Research placements of GSSM students on campus and with University Scientists	No Change
Higher Education Institute	MUSC	Summer Advanced Research placements of GSSM students on campus and with University Scientists	No Change
K-12 Education Institute	S.C. Elementary Schools	Provide Teacher Training and Outreach Programs for teachers and students. Recruit and partner on educational Initiatives	No Change
K-12 Education Institute	S.C. High Schools	Provide Teacher Training and Outreach Programs for teachers and students. Recruit and partner on educational Initiatives	No Change
K-12 Education Institute	S.C. Middle Schools	Provide Teacher Training and Outreach Programs for teachers and students. Recruit and partner on educational Initiatives	No Change
Higher Education Institute	S.C. State	Summer Advanced Research placements of GSSM students on campus and with University Scientists. Teacher Training and Engineering partnerships	No Change
K-12 Education Institute	School Districts in South Carolina	Provide Teacher Training and Outreach Programs for teachers and students. Recruit and partner on educational Initiatives	No Change
Higher Education Institute	University of South Carolina	Course equivalency agreements for course credit. Summer Advanced Research placements of GSSM students on campus and with University Scientists	No Change

FY2022

Reports Data

as submitted for the Accountability Report by:

H650 - GOVERNOR'S SCHOOL FOR SCIENCE AND MATH

Report Name	Law Number (if applicable)	Summary of information requested in the report	Date of most recent submission DURING the past fiscal year	Reporting Frequency	Type of entity/entities	Method to access the report	Direct access hyperlink or agency contact (if not provided to LSA for posting online)	Changes to this report during the past fiscal year	Explanation why a report wasn't submitted
Annual State Audit	SECTION 11-7-20	Policies and Procedures review, Variances in Line Items, Justifications	August-21	Annually	South Carolina state agency or agencies	Electronic copy available upon request	https://osa.sc.gov/wp-content/uploads/2021/11/GSSM-H6320-Final.pdf	No Change	
S.C. School Report Card	SECTION 59-18-110	Benchmarks and metrics in comparison to public schools	October-21	Annually	South Carolina state agency or agencies	Electronic copy available upon request	https://screportcards.com/overview/?q=cT0yMDIxJnQ9RCZzaWQ5NTMSNTAwMA	No Change	
SC Governor's School for Science and Mathematics Annual Budget		Budget Priorities and Justifications - For Approval	September-21	Annually	South Carolina state agency or agencies	Electronic copy available upon request	Finance and Operations Department 843-383-3901	No Change	
State Budget Request		Budget Priorities and Justifications	September-21	Annually	Governor or Lt. Governor AND Legislative entity or entities AND South Carolina state agency or agencies	Electronic copy available upon request	https://admin.sc.gov/sites/default/files/budget/FY23%20H650%20-%20GSSM%20REVISED%201.26.22.pdf	No Change	
State Human Affairs Commission Report to the General Assembly	SECTION 1-13-110	Hiring and Minority Employment Assessment	February-22	Annually	Legislative entity or entities AND South Carolina state agency or agencies	Electronic copy available upon request	https://scstatehouse.gov/reports/HumanAffairsComm/SCHAC%20Report%20to%20the%20General%20Assembly%202022.pdf	No Change	