



2025 Annual Accountability Report

**South Carolina Governor's School for
Science and Mathematics**

Agency Code: H650

Table of Contents

Agency's Discussion and Analysis	1
Agency Organization Chart	6
Reorganization and Compliance	7
Strategic Plan Results	9
Strategic Plan Development	13
Budget Data	17
Legal Data	18
Services Data.....	23
Partnerships Data.....	24
Reports Data	26
Submission Form	27

AGENCY NAME:	South Carolina Governor's School for Science and Mathematics		
AGENCY CODE:	H650	SECTION:	10

AGENCY'S DISCUSSION AND ANALYSIS

The South Carolina Governor's School for Science & Mathematics (GSSM) seeks out and advances our state's most talented and motivated students, offering a transformative education in science, mathematics, and engineering that cultivates joy in learning and builds the confidence to engage as ethical leaders with the world's most significant issues. As a nationally recognized leader in STEM education, GSSM leverages its expertise to serve as a statewide educational resource, engaging over 10,000 South Carolina public school students annually.

Although GSSM prides itself on serving students across the state, the institution recognizes that the South Carolina Department of Education continues to identify STEM fields as areas of critical need and seeks to further leverage its knowledge and expertise to enhance education statewide. The institution's strategic vision is focused on ensuring a continued return on investment for the state by further scaling its existing programmatic expertise to meet the STEM needs of South Carolina's public education system. With additional key investments from the state, GSSM is well-positioned to help meet the increasing need for expertise and support in these subject areas to ensure South Carolina's students are prepared to engage with emerging technologies and concepts that will impact the state's future economic and workforce development efforts.

The expertise of GSSM's faculty and staff has allowed the institution to scale its impact outside of its hallmark residential program, which serves 288 students annually. GSSM understands that highly motivated and talented students are found in every community across the state and is dedicated to providing high-quality and enriching STEM-focused experiential educational opportunities to as many public-school students as possible. Students who are unable to participate in the residential program experience the benefits of GSSM academics at their own high schools or from home through virtual high school programs. Elementary and middle school students, who are not yet old enough to participate in the residential program, experience hands-on STEM learning through programs led by GSSM instructors at their schools, by visiting campus for special classes, in on-campus and online afterschool programs, and through summer camps.

The success of this unique school is driven by its values:

- Serving as a statewide resource for STEM education;
- Emphasizing innovation in curriculum and programmatic offerings to meet the state's future workforce and economic development needs; and,
- Development and well-being of the whole student with an emphasis on promoting joyful curiosity.

Academics

The basis of GSSM's transformative education is a quality curriculum taught by strong faculty and supported by dedicated staff who genuinely care about their students. All faculty members have master's degrees or extensive work experience in their fields, and 81% hold a doctoral degree in their specialty field. An 8:1 student-teacher ratio, dedicated faculty office hours, robust academic advisement, and expert student success and college counseling professionals ensure students have every opportunity to achieve academic success.

AGENCY NAME:	South Carolina Governor’s School for Science and Mathematics		
AGENCY CODE:	H650	SECTION:	10

GSSM’s course offerings give students multiple opportunities for in-depth exploration:

- 151 courses offered as semester or year-long courses;
- 79 STEM courses;
- 18 AP courses;
- 25 dual-enrolled courses;
- 22 courses for which an AP course is a prerequisite; and,
- Seminar classes equip students for research, life skills, public speaking, and college admissions.

GSSM’s innovative and rigorous STEM-focused curriculum is the primary reason the institution is consistently ranked among the top high schools in the nation. The institution prides itself on its robust and challenging academic offerings through its residential, virtual, and statewide academic STEM programs; however, current space and resource constraints prevent the institution from fully leveraging the expertise of its faculty and staff to the benefit of the state. The institution can provide experiential educational opportunities in emerging fields such as Artificial Intelligence, Robotics, Electric Vehicles, Advanced Energy Resiliency, Advanced Manufacturing, and Biotechnology, but it lacks the physical space to allow students to fully engage with these concepts. In order to meet the needs of the state and fully meet its strategic mission, GSSM seeks to expand its campus through construction of a new building that will allow the school to expand its curriculum and programmatic offerings to better serve as a statewide resource in STEM education.

Rooted in the importance of engaging in experiential learning that is focused on real world applications, GSSM’s existing curriculum requires rising seniors to participate in a summer research experience that pairs each student with professional researchers to work on current projects and emerging issues. In 2024-2025, 142 students conducted research at 31 sites with 94 mentors. Over half of these students conducted transformative research with faculty at South Carolina R1 universities, the University of South Carolina Columbia and Clemson, studying in fields such as:

- *Single-Cell Measurement of DUB Activity in Multiple Myeloma: A Microfluidic Approach to Cancer Profiling*
- *Metal-Organic Cages for Host-Guest Catalysis in Carbon Dioxide Reduction*
- *Predicting the Eliashberg Function of Materials Using Graphical Neural Networks*
- *Cover Crop Functional Types and Their Impact on Soil Organic Carbon Fractions*
- *Predicting VO₂ with NIRS: A New Frontier in Athletic Performance Monitoring*
- *Designing UAV-Deployable Water Sensors for Environmental Monitoring in Resource-Limited Regions*

Strengthening and expanding research-based experiential learning opportunities for students during the summer and the academic year is a strategic priority for GSSM. Currently, the institution relies heavily upon fundraising support from its Foundation in order to ensure the quality of its research program. Developing strong partnerships with South Carolina’s R1 universities directly engages students with these institutions, resulting in strong connections that support in-state retention after graduation from GSSM, which ultimately serves to buttress the state’s workforce and economic

AGENCY NAME:	South Carolina Governor’s School for Science and Mathematics		
AGENCY CODE:	H650	SECTION:	10

development efforts. With additional support from the State of South Carolina, the institution seeks to further its impact as a statewide resource by continuing to build upon the demonstrable success of this program to further advance STEM excellence within the state.

Global Learning Opportunities

A critical component of GSSM’s mission is ensuring its students are well-prepared to engage with global issues. Accordingly, the institution continues to devote resources to enhancing global learning opportunities for students, which helps develop their awareness of global issues and their ability to work competently across cultural and international borders.

Through the Research Experience Scholars Program, students conduct mentored research at the German Cancer Research Center in Heidelberg, Germany, and the Fraunhofer Institute of Experimental Software Engineering, the Fraunhofer Institute of Industrial Mathematics, and the German Research Center for Artificial Intelligence, all in Kaiserslautern, Germany. Partnerships with the Johanna Wittum Schule in Pforzheim, Germany, and the Gymnasium am Rittersberg in Kaiserslautern, Germany, provide host families who house the GSSM students and introduce them to their country and culture while they are in Germany. In the fall semester following this summer experience, German students from Johanna Wittum Schule and Gymnasium am Rittersberg visit GSSM for several weeks to attend classes and conduct research at the Clemson University Pee Dee Research & Education Center. This program provides participating students a unique opportunity to be immersed in German culture and the international research community.

In April 2025, a group of 27 GSSM students and staff traveled to Antigua, Guatemala, in collaboration with the MEDLIFE organization. Through this service-learning project, learned firsthand about healthcare access and delivery in a developing region by participating in mobile medical clinics, assisting in efforts to provide essential healthcare services to underserved communities. In addition to their work in the clinics, students completed a service project and explored Guatemalan culture through educational and community engagement activities.

Residential Life

GSSM’s commitment to the development and well-being of the whole student is particularly important in the residential setting. A dedicated team of professional live-in staff provide oversight for the student residence halls, nurses contracted through the local hospital are on campus from morning to night to attend to students’ health needs, and three licensed professional counselors provide mental health support. Additionally, myriad opportunities and supports are available to ensure students thrive.

GSSM boasts 16 interscholastic varsity athletic teams, including cross country, swimming, basketball, tennis, track, soccer, golf, volleyball, and cheerleading. Approximately 70 percent of residential students participated in athletics in 2024-25. Students also manage, under the supervision of the Athletics staff, game day operations such as setting up and breaking down, music, livestream, score table, concessions, and ticket sales.

AGENCY NAME:	South Carolina Governor's School for Science and Mathematics		
AGENCY CODE:	H650	SECTION:	10

GSSM supports more than 70 clubs, organizations, and societies, including service organizations, academic teams, special interest groups, and clubs representing various disciplines, and 85 percent of residential students participate in one or more of them. These clubs and organizations, along with the campus life staff, sponsor a full complement of diverse programs and activities for students, including festivals, cultural celebrations, and awareness/service initiatives.

Statewide Resource for STEM Education

By teaching over 10,000 students across South Carolina, GSSM maximizes its impact as a STEM education resource through continued strategic investment in its statewide academic STEM programs. These programs provide engaging and interactive STEM-focused experiential learning opportunities for students and teachers across the State of South Carolina, with an emphasis on reaching underserved communities, through a robust portfolio of programmatic offerings that include:

- **GoSciTech Residential Camp:** STEM summer camps for middle and high school students held on the GSSM campus, taught by GSSM and university educators; participating students are immersed in hands-on study of their course topic, with options including anatomy, robotics, astrophysics, programming, and more. In summer 2025, 427 students participated in GoSciTech Residential over three weeks.
- **GoSciTech Day Camp:** In partnership with the SC Technical College System, STEM summer camps for middle school students are held on all 16 Technical College campuses across the state; participating students study their choice of engineering, game design, or human biology through interactive curricula developed by GSSM and taught by public school teachers, who also take the curriculum back to their classrooms for future use. In summer 2025, 420 students participated in GoSciTech Day Camps, which were hosted at all 16 of South Carolina's Technical College campuses.
- **GoSciTech Virtual Camp:** STEM summer camps for middle and high school students held online; students learn from GSSM and university educators via Zoom and work on hands-on projects offline. In summer 2025, 80 students participated in GoSciTech Virtual over two weeks.
- **STEM Days at GSSM:** opportunities for elementary and middle school students to come to the GSSM campus or have a GSSM educator visit their school; students participate in standards-based hands-on educational activities and, if at GSSM, tour campus and eat lunch in the dining hall. In 2024-25, GSSM hosted 1,051 students and 128 teachers on campus.
- **STEM Days on the Go:** GSSM educators travel to 3rd-10th grade classrooms across the state to provide inquiry-based STEM learning experiences. In 2024-25, the team visited 6,175 students at 60 schools across South Carolina.
- **SPARK:** a series of virtual afterschool classes for middle schoolers covering a wide variety of topics, led by current GSSM residential students. In 2024-25, SPARK served 657 students through 38 classes.
- **ENGAGE:** a five-week afterschool experience for middle schoolers held on the GSSM campus, led by current GSSM residential students. In 2024-25, ENGAGE served 61 students.
- **INSIDE GSSM:** an annual open house for students of all ages and their families across the state to experience GSSM while participating in interactive activities led by students, faculty, and staff. In 2024- 25, 316 students and 255 adults participated in INSIDE GSSM.

AGENCY NAME:	South Carolina Governor’s School for Science and Mathematics		
AGENCY CODE:	H650	SECTION:	10

GSSM’s statewide programs are designed to promote STEM education across the state, allowing the institution to scale its expertise and resources beyond the residential and virtual programs. The institution’s substantial statewide program portfolio is designed to kindle interest in STEM at a young age and provide opportunities for each student to develop important skills that promote lifelong learning, such as critical thinking, problem-solving, teamwork, and communication. The value of these programs is apparent in the 2025 summer camp students:

- 87% increased their knowledge and understanding of STEM concepts;
- 76% increased their understanding of the real-world applications of STEM;
- 76% improved their critical thinking skills; and,
- 73% improved their problem-solving, teamwork, and communication skills.

GSSM expanded its partnership with the South Carolina Technical College System by offering GoSciTech Day Camps at all 16 technical college campuses in the summer of 2025. Offering camps at these locations increases GSSM’s statewide impact by increasing program accessibility and enhancing participation by students and teachers across the state. This partnership further benefits the state by increasing the exposure of South Carolina’s students to the technical college system and helping students and their families understand the importance of these institutions to the state’s workforce and economic development efforts.

Risk Assessment and Mitigation Strategies

GSSM provides uniquely advanced educational opportunities in multiple settings to highly capable students across the state. Its goals and objectives are focused on enhancing quality, availability, and access to STEM education statewide. Failure to accomplish these goals and objectives would mean that GSSM is not providing top-tier education, that its programs are not available in areas where students who need them live, or that, where they are available, they are not equally accessible to all students.

Thanks to historically strong support from the state legislature, private partnerships, and an active community of parents and alumni, GSSM is well-positioned to achieve its goals with excellence. GSSM’s future success depends on continued investment in its mission to better allow the institution to expand its programmatic offerings and scale its impact as a statewide educational resource. Additional support of its programs, especially the growth of its physical campus and Research and Statewide STEM Education initiatives, is key to GSSM’s ability to identify and nurture talented students to lead the state’s knowledge economy and workforce development efforts.

AGENCY NAME:

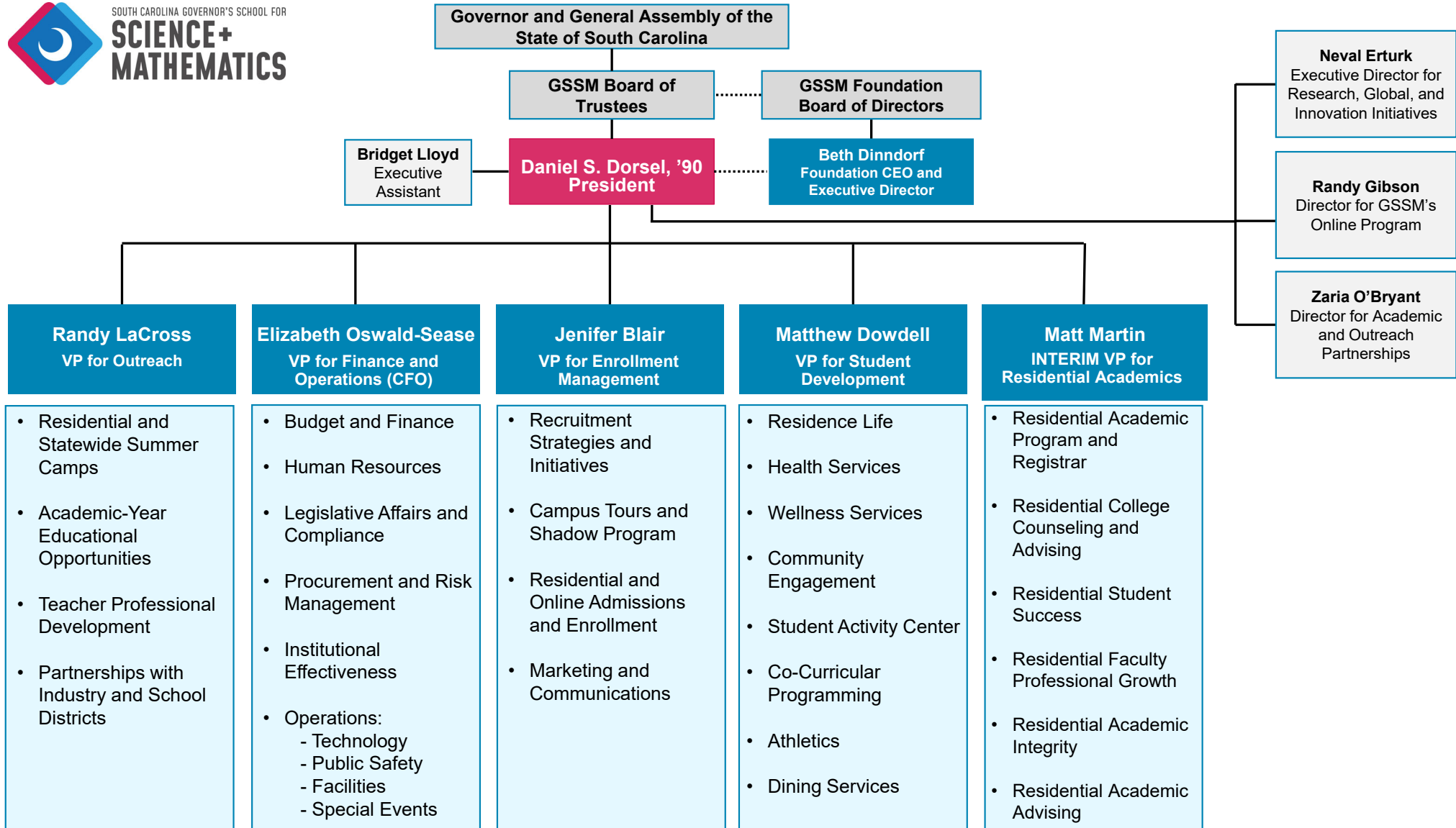
South Carolina Governor's School for Science and Mathematics

AGENCY CODE:

H650

SECTION:

10



2025

Reorganization and Compliance

as submitted for the Accountability Report by:

H650 - GOVERNOR'S SCHOOL FOR SCIENCE AND MATH

Primary Contact

First Name	Last Name	Role/Title	Email Address	Phone
Elizabeth	Oswald-Sease	Vice President of Finance and Operations/CFO	eoswaldsease@governors.school	803-402-7556

Secondary Contact

First Name	Last Name	Role/Title	Email Address	Phone
Pam	Altman	Project Manager	altman@governors.school	803-318-8902

Agency Mission

Adopted in:

2018

GSSM seeks out and advances our state's most talented and motivated students, offering a transforming education in science, mathematics, and engineering that cultivates joy in learning and builds the confidence to engage as ethical leaders with the world's most significant issues.

Agency Vision

Adopted in:

2018

We will be recognized as a national leader in K-12 science and mathematics education, known for developing students who are exceptionally well-prepared to engage in global issues as creative and ethical leaders.

Recommendations for reorganization requiring legislative change:

None

Agency intentions for other major reorganization to divisions, departments, or programs to allow the agency to operate more effectively and efficiently in the succeeding fiscal year:

None

Significant events related to the agency that occurred in FY2025

Description of Event	Start	End	Agency Measures Impacted	Other Impacts
No significant events				

Is the agency in compliance with S.C. Code Ann. § 2-1-220, which requires submission of certain reports to the Legislative Services Agency for publication online and the State Library? (See also S.C. Code Ann. § 60-2-20).

Yes

Reason agency is out of compliance: (if applicable)

Is the agency in compliance with various requirements to transfer its records, including electronic ones, to the Department of Archives and History? See the Public Records Act (S.C. Code Ann. § 30-1-10 through 30-1-180) and the South Carolina Uniform Electronic Transactions Act (S.C. Code Ann. § 26-6-10 through 26-10-210).		Yes
Does the law allow the agency to promulgate regulations?		No
Law number(s) which gives the agency the authority to promulgate regulations:		
Has the agency promulgated any regulations?		No
Is the agency in compliance with S.C. Code Ann. § 1-23-120 (J), which requires an agency to conduct a formal review of its regulations every five years?		Yes
(End of Reorganization and Compliance Section)		

FY2025

Strategic Plan Results

as submitted for the Accountability Report by:

H650 - GOVERNOR'S SCHOOL FOR SCIENCE AND MATH

- Goal 1** Provide advanced education for South Carolina's most academically motivated students
- Goal 2** Operate a residential campus supportive of students in activities, character development, and safety
- Goal 3** Serve as a statewide resource for K-12 students and educators

Perf. Measure Number	Description	Base	Target	Actual	Value Type	Desired Outcome	Time Applicable	Calculation Method	Data Source	Data Location	Stakeholder Need Satisfied	Primary Stakeholder	State Funded Program Number Responsible	Notes
1.1 Provide highly credentialed and experienced teachers in all subjects		State Objective: Education, Training, and Human Development												
1.1.1	Teachers with advanced degrees in their discipline and/or demonstrated equivalent work experience	100%	100%	100%	Percent	Maintain range	State Fiscal Year	Percent of faculty members who hold advanced degrees in their discipline and/or have significant work experience in their discipline	School Records	Human Resources	A well-educated faculty experienced in higher education.	GSSM Students	5001.000000.000	
1.1.2	Teachers engaging in professional development opportunities	100%	100%	100%	Percent	Maintain range	State Fiscal Year	Percent of faculty members who participated in at least one professional development opportunity during the report year	School Records	Academics	A well-educated faculty experienced in higher education.	GSSM Students	5001.000000.000	
1.2 Continually enhance curriculum offerings in the residential, virtual and outreach programs		State Objective: Education, Training, and Human Development												
1.2.1	Maintain or increase high-impact practices at GSSM	73%	100%	88%	Percent	Equal to or greater than	Other	Percent of residential students participating in at least two high-impact offerings by the time they graduate	School Records	Academics	Preparation for college and careers.	GSSM Students	5001.000000.000	
1.2.2	Maintain or increase statewide online STEM offerings	8	8	8	Count	Equal to or greater than	Other	Number of STEM courses offered through Online Courses program	School Records	Academics	Preparation for college and careers.	GSSM Students	5001.000000.000	
1.2.3	Maintain or increase STEM Outreach opportunities during the school year	115	150	141	Count	Equal to or greater than	Other	Number of school-year outreach program instances	School Records	Outreach	Provide hands-on STEM education experiences for elementary and middle school students.	South Carolina Students	5001.000000.000	
1.2.4	Maintain or increase STEM Outreach opportunities during the summer	15	20	21	Count	Equal to or greater than	Other	Number of summer outreach program instances	School Records	Outreach	Provide hands-on STEM education experiences for elementary and middle school students.	South Carolina Students	5001.000000.000	

Perf. Measure Number	Description	Base	Target	Actual	Value Type	Desired Outcome	Time Applicable	Calculation Method	Data Source	Data Location	Stakeholder Need Satisfied	Primary Stakeholder	State Funded Program Number Responsible	Notes
1.3 Provide a safe and supportive learning environment														
1.3.1	Maintain low student to teacher ratio	9-1	9-1	8-1	Ratio	Equal to or greater than	Other	Average number of students per teacher	School Records	Academics	Supportive learning environment.	GSSM Students	5001.000000.000	
1.3.2	Maintain small class sizes	10	10	11	Count	Maintain range	Other	Average number of students per class section in the residential program	School Records	Academics	Supportive learning environment.	GSSM Students	5001.000000.000	
1.3.3	Maintain or increase Launchpad summer bridge program	30	30	34	Count	Equal to or greater than	Other	Number of incoming residential juniors participating in Launchpad	School Records	Academics	Supportive learning environment.	GSSM Students	5001.000000.000	
1.3.4	Maintain or increase availability of peer tutors	70	70	100	Count	Equal to or greater than	Other	Number of residential students serving as peer tutors	School Records	Academics	Supportive learning environment.	GSSM Students	5001.000000.000	
1.4 Enhance GSSM's advanced research program opportunities for students														
1.4.1	Increase research opportunities at state, national, and international universities and/or industrial sites	30	35	31	Count	Equal to or greater than	Other	Number of research sites	School Records	Academics	Opportunities to learn outside the classroom through real-world research experiences.	GSSM Students	5001.000000.000	
1.4.2	Provide research opportunities for virtual students	10	12	17	Count	Equal to or greater than	Other	Number of virtual program students participating in research	School Records	Academics	Opportunities to learn outside the classroom through real-world research experiences.	GSSM Students	5001.000000.000	
1.4.3	Establish and maintain on-campus research opportunities for students	1	1	5	Count	Equal to or greater than	Other	Number of on-campus, not-for-credit research opportunities available for students	School Records	Academics	Opportunities to learn outside the classroom through real-world research experiences.	GSSM Students	5001.000000.000	
1.5 Ensure student preparation for higher education														
1.5.1	Graduates admitted to institutions of higher education	100%	100%	100%	Percent	Equal to or greater than	Other	Percent of graduates who were admitted to at least one undergraduate institution	School Records	Academics	Opportunity for a postsecondary education.	GSSM Students	5001.000000.000	
2.1 Conduct extracurricular programs appropriate to an academically focused residential high school														

Perf. Measure Number	Description	Base	Target	Actual	Value Type	Desired Outcome	Time Applicable	Calculation Method	Data Source	Data Location	Stakeholder Need Satisfied	Primary Stakeholder	State Funded Program Number Responsible	Notes	
2.1.1	Maintain or increase student participation on athletic teams by providing sports that support student interests and abilities		75%	75%	70%	Percent	Equal to or greater than	State Fiscal Year	Percent of residential students participating in SCHSL athletics	School Records	Student Development	Opportunities to participate in athletic events on a interscholastic level.	GSSM Students	5001.000000.000	
2.1.2	Maintain or increase student participation in clubs and organizations by providing opportunities that match student interests and abilities		95%	95%	85%	Percent	Equal to or greater than	State Fiscal Year	Percent of residential students involved in clubs and organizations	School Records	Student Development	Opportunities to explore and develop other interests outside of class.	GSSM Students	5001.000000.000	
2.1.3	Maintain or increase student participation in academic competition teams		25%	25%	49%	Percent	Equal to or greater than	State Fiscal Year	Percent of residential students involved in academic competition teams	School Records	Academics	Opportunities to explore and develop other interests outside of class.	GSSM Students	5001.000000.000	
2.2 Ensure physical and mental health of students State Objective: Education, Training, and Human Development															
2.2.1	Provide mental health licensed professionals to support mental health of the students		3	3	3	Count	Equal to or greater than	State Fiscal Year	Number of licensed professional counselors	School Records	Human Resources	Provide students with well-trained mental health professionals on campus.	GSSM Students	5001.000000.000	
2.2.2	Provide extensive qualified nursing services to include medication management		14	14	14	Count	Equal to or greater than	State Fiscal Year	Number of shifts during which nurses are available to provide health care	School Records	Student Development	Meet the health needs of residential students on campus.	GSSM Students	5001.000000.000	
3.1 Serve talented and motivated students across South Carolina State Objective: Education, Training, and Human Development															
3.1.1	South Carolina students benefitting from outreach experiences		6,500	6,600	8,874	Count	Equal to or greater than	Other	Number of students who participated in outreach programs	School Records	Outreach	Provide STEM education to students throughout the state.	South Carolina Students	5001.000000.000	
3.1.2	Meet the demonstrated financial need of students in residential, online, and outreach programs		100%	100%	100%	Percent	Equal to or greater than	Other	Percent of students whose financial aid needs were met	School Records	Finance; Outreach	Ensure access to quality STEM education regardless of socioeconomic status or ability to pay required fees.	South Carolina Students	5001.000000.000	
3.1.3	Students from underserved areas who participated in GSSM residential, online, and outreach programs		3,500	4,000	6,911	Count	Equal to or greater than	Other	Number of students from underserved areas participating in residential, online, and outreach programs	School Records	Academics; Outreach	Provide STEM education to students throughout the state.	South Carolina Students	5001.000000.000	

Perf. Measure Number	Description	Base	Target	Actual	Value Type	Desired Outcome	Time Applicable	Calculation Method	Data Source	Data Location	Stakeholder Need Satisfied	Primary Stakeholder	State Funded Program Number Responsible	Notes
3.1.4	Counties in which students participating in residential, online, and outreach programs reside	44	46	45	Count	Equal to or greater than	Other	Number of counties in which students participating in residential, online, and outreach programs reside	School Records	Academics; Outreach	Provide STEM education to students throughout the state.	South Carolina Students	5001.000000.000	

FY2026

Strategic Plan Development

as submitted for the Accountability Report by:
H650 - GOVERNOR'S SCHOOL FOR SCIENCE AND MATH

- Goal 1** Provide advanced education for South Carolina's most academically motivated students
- Goal 2** Operate a residential campus supportive of students in activities, character development, and safety
- Goal 3** Serve as a statewide resource for K-12 students and educators

Perf. Measure Number	Description	Base	Target	Value Type	Desired Outcome	Time Applicable	Calculation Method	Data Source	Data Location	Stakeholder Need Satisfied	Primary Stakeholder	State Funded Program Number Responsible	Notes
1.1 Provide highly credentialed and experienced teachers in all subjects State Objective: Education, Training, and Human Development													
1.1.1	Teachers with advanced degrees in their discipline and/or demonstrated equivalent work experience	100%	100%	Percent	Maintain range	State Fiscal Year	Percent of faculty members who hold advanced degrees in their discipline and/or have significant work experience in their discipline	School Records	Human Resources	A well-educated faculty experienced in higher education.	GSSM Students	5001.000000.000	
1.1.2	Teachers engaging in professional development opportunities	100%	100%	Percent	Maintain range	State Fiscal Year	Percent of faculty members who participated in at least one professional development opportunity during the report year	School Records	Academics	A well-educated faculty experienced in higher education.	GSSM Students	5001.000000.000	
1.2 Continually enhance curriculum offerings in the residential, virtual and outreach programs State Objective: Education, Training, and Human Development													
1.2.1	Maintain or increase high-impact practices at GSSM	73%	100%	Percent	Equal to or greater than	Other	Percent of residential students participating in at least two high-impact offerings by the time they graduate	School Records	Academics	Preparation for college and careers.	GSSM Students	5001.000000.000	
1.2.2	Maintain or increase statewide online STEM offerings	8	8	Count	Equal to or greater than	Other	Number of STEM courses offered through Online Courses program	School Records	Academics	Preparation for college and careers.	GSSM Students	5001.000000.000	
1.2.3	Maintain or increase STEM Outreach opportunities during the school year	115	150	Count	Equal to or greater than	Other	Number of school-year outreach program instances	School Records	Outreach	Provide hands-on STEM education experiences for elementary and middle school students.	South Carolina Students	5001.000000.000	

Perf. Measure Number	Description	Base	Target	Value Type	Desired Outcome	Time Applicable	Calculation Method	Data Source	Data Location	Stakeholder Need Satisfied	Primary Stakeholder	State Funded Program Number Responsible	Notes
1.2.4	Maintain or increase STEM Outreach opportunities during the summer	15	20	Count	Equal to or greater than	Other	Number of summer outreach program instances	School Records	Outreach	Provide hands-on STEM education experiences for elementary and middle school students.	South Carolina Students	5001.000000.000	
1.3 Provide a safe and supportive learning environment State Objective: Education, Training, and Human Development													
1.3.1	Maintain low student to teacher ratio	9-1	9-1	Ratio	Equal to or greater than	Other	Average number of students per teacher	School Records	Academics	Supportive learning environment.	GSSM Students	5001.000000.000	
1.3.2	Maintain small class sizes	10	10	Count	Maintain range	Other	Average number of students per class section in the residential program	School Records	Academics	Supportive learning environment.	GSSM Students	5001.000000.000	
1.3.3	Maintain or increase Launchpad summer bridge program	30	30	Count	Equal to or greater than	Other	Number of incoming residential juniors participating in Launchpad	School Records	Academics	Supportive learning environment.	GSSM Students	5001.000000.000	
1.3.4	Maintain or increase availability of peer tutors	70	70	Count	Equal to or greater than	Other	Number of residential students serving as peer tutors	School Records	Academics	Supportive learning environment.	GSSM Students	5001.000000.000	
1.4 Enhance GSSM's advanced research program opportunities for students State Objective: Education, Training, and Human Development													
1.4.1	Increase research opportunities at state, national, and international universities and/or industrial sites	30	35	Count	Equal to or greater than	Other	Number of research sites	School Records	Academics	Opportunities to learn outside the classroom through real-world research experiences.	GSSM Students	5001.000000.000	
1.4.2	Provide research opportunities for virtual students	10	12	Count	Equal to or greater than	Other	Number of virtual program students participating in research	School Records	Academics	Opportunities to learn outside the classroom through real-world research experiences.	GSSM Students	5001.000000.000	

Perf. Measure Number	Description	Base	Target	Value Type	Desired Outcome	Time Applicable	Calculation Method	Data Source	Data Location	Stakeholder Need Satisfied	Primary Stakeholder	State Funded Program Number Responsible	Notes
1.4.3	Establish and maintain on-campus research opportunities for students		1	Count	Equal to or greater than	Other	Number of on-campus, not-for-credit research opportunities available for students	School Records	Academics	Opportunities to learn outside the classroom through real-world research experiences.	GSSM Students	5001.000000.000	
1.5 Ensure student preparation for higher education State Objective: Education, Training, and Human Development													
1.5.1	Graduates admitted to institutions of higher education	100%	100%	Percent	Equal to or greater than	Other	Percent of graduates who were admitted to at least one undergraduate institution	School Records	Academics	Opportunity for a postsecondary education.	GSSM Students	5001.000000.000	
2.1 Conduct extracurricular programs appropriate to an academically focused residential high school State Objective: Education, Training, and Human Development													
2.1.1	Maintain or increase student participation on athletic teams by providing sports that support student interests and abilities	75%	75%	Percent	Equal to or greater than	State Fiscal Year	Percent of residential students participating in SCHSL athletics	School Records	Student Development	Opportunities to participate in athletic events on a interscholastic level.	GSSM Students	5001.000000.000	
2.1.2	Maintain or increase student participation in clubs and organizations by providing opportunities that match student interests and abilities	95%	95%	Percent	Equal to or greater than	State Fiscal Year	Percent of residential students involved in clubs and organizations	School Records	Student Development	Opportunities to explore and develop other interests outside of class.	GSSM Students	5001.000000.000	
2.1.3	Maintain or increase student participation in academic competition teams	25%	25%	Percent	Equal to or greater than	State Fiscal Year	Percent of residential students involved in academic competition teams	School Records	Academics	Opportunities to explore and develop other interests outside of class.	GSSM Students	5001.000000.000	
2.2 Ensure physical and mental health of students State Objective: Education, Training, and Human Development													
2.2.1	Provide mental health licensed professionals to support mental health of the students	3	3	Count	Equal to or greater than	State Fiscal Year	Number of licensed professional counselors	School Records	Human Resources	Provide students with well-trained mental health professionals on campus.	GSSM Students	5001.000000.000	
2.2.2	Provide extensive qualified nursing services to include medication management	14	14	Count	Equal to or greater than	State Fiscal Year	Number of shifts during which nurses are available to provide health care	School Records	Student Development	Meet the health needs of residential students on campus.	GSSM Students	5001.000000.000	
3.1 Serve talented and motivated students across South Carolina State Objective: Education, Training, and Human Development													

Perf. Measure Number	Description	Base	Target	Value Type	Desired Outcome	Time Applicable	Calculation Method	Data Source	Data Location	Stakeholder Need Satisfied	Primary Stakeholder	State Funded Program Number Responsible	Notes
3.1.1	South Carolina students benefiting from outreach experiences	6,500	6,600	Count	Equal to or greater than	Other	Number of students who participated in outreach programs	School Records	Outreach	Provide STEM education to students throughout the state.	South Carolina Students	5001.000000.000	
3.1.2	Meet the demonstrated financial need of students in residential, online, and outreach programs	100%	100%	Percent	Equal to or greater than	Other	Percent of students whose financial aid needs were met	School Records	Finance; Outreach	Ensure access to quality STEM education regardless of socioeconomic status or ability to pay required fees.	South Carolina Students	5001.000000.000	
3.1.3	Students from underserved areas who participated in GSSM residential, online, and outreach programs	3,500	4,000	Count	Equal to or greater than	Other	Number of students from underserved areas participating in residential, online, and outreach programs	School Records	Academics; Outreach	Provide STEM education to students throughout the state.	South Carolina Students	5001.000000.000	
3.1.4	Counties in which students participating in residential, online, and outreach programs reside	44	46	Count	Equal to or greater than	Other	Number of counties in which students participating in residential, online, and outreach programs reside	School Records	Academics; Outreach	Provide STEM education to students throughout the state.	South Carolina Students	5001.000000.000	

2025

Budget Data

as submitted for the Accountability Report by:
H650 - GOVERNOR'S SCHOOL FOR SCIENCE AND MATH

State Funded Program No.	State Funded Program Title	Description of State Funded Program	(Actual) General	(Actual) Other	(Actual) Federal	(Actual) Total	(Projected) General	(Projected) Other	(Projected) Federal	(Projected) Total
5001.000000.000	Governor's School for Science and Mathematics	Education of academically talented students with accelerated instruction of STEM courses.	\$ 17,656,358.00	\$ 3,994,033.02	\$ -	\$ 20,013,231.00	\$ 18,534,894.00	\$ 3,906,455.00	\$ -	\$ 22,441,349.00

2025

Legal Data

as submitted for the Accountability Report by:

H650 - GOVERNOR'S SCHOOL FOR SCIENCE AND MATH

Law number	Jurisdiction	Type	Description	Purpose the law serves:	Notes:	Changes made during FY2025
59-48-10	State	Statute	Establishment of school.	Requires a service	Accelerated instruction in mathematics and science in a residential educational setting.	No Change
59-48-20	State	Statute	Board of trustees; appointment; term of office; compensation.	Board, commission, or committee on which someone from our agency must/may serve		No Change
CHAPTER 48. HISTORY: 1987 Act No. 170, Part II, Section 23.	State	Statute	Establish School and Governing Body 1987	Board, commission, or committee on which someone from our agency must/may serve		No Change
Proviso 1.88	State	FY 2021-22 Proviso	GSSM will develop a plan to operate the school separately from the Department of Education.	Requires a manner of delivery		No Change
Proviso 10.2	State	FY22-23 Proviso	(GSSM: Leave Policy) The Governor's School for Science and Mathematics shall be authorized to promulgate administrative policy governing annual and sick leave relative to faculty and staff with the approval of their board of directors. This policy shall address their school calendar in order to comply with the instructional needs of students attending the special school.	Requires a manner of delivery	Formerly Proviso 1.21	No Change

Law number	Jurisdiction	Type	Description	Purpose the law serves:	Notes:	Changes made during FY2025
Proviso 10.3	State	FY22-23 Proviso	(GSSM: Schools' Fees) The Governor's School for Science and Mathematics shall be authorized to charge, collect, expend, and carry forward student fees as approved by their Board of Directors. The purpose and amount of any such fees shall be to maintain program quality in both academics and residential support. No student shall be denied admittance or participation due to financial inability to pay. The Board of Directors shall promulgate administrative policy governing the collection of all student fees. The school shall conspicuously publish a fee schedule on their website. All student fees must be reported by August first of the current fiscal year to the Governor, the Chairman of the Senate Finance Committee, and the Chairman of the House Ways and Means Committee.	Funding agency deliverable(s)	Formerly Proviso 1.28	No Change
Proviso 10.4	State	FY22-23 Proviso	(GSSM: Residency Requirement) Of the funds appropriated, the Governor's School for Science and Mathematics shall ensure that a parent(s) or guardian(s) of a student attending the Governor's School for Science and Mathematics must prove that they are a legal resident of the state of South Carolina at the time of application and must remain so throughout time of attendance. The Governor's School for Science and Mathematics may not admit students whose parent(s) or guardian(s) are not legal residents of South Carolina.	Report our agency must/may provide	Formerly Proviso 1.43	No Change
Proviso 10.5	State	FY22-23 Proviso	(GSSM: Informational Access to Students) For the current fiscal year, school districts must permit the Governor's School for Science and Mathematics to collaborate with individual schools and their staff to share information with students and families about the educational opportunities offered at the Governor's School through avenues including school visits, informational presentations, and posters. By June thirtieth of the current fiscal year, the Governor's School for Science and Mathematics must report to the Chairman of the Senate Finance Committee and the Chairman of the House Ways and Means Committee the results of these informational access efforts. Further, the Governor's School shall work with districts, the Department of Education, and School Report Card administrators to ensure that SAT scores of current Governor's School students are included in the School Report Card of those students' resident schools and districts.	Report our agency must/may provide	Formerly Proviso 1.58	No Change

Law number	Jurisdiction	Type	Description	Purpose the law serves:	Notes:	Changes made during FY2025
Proviso 10.6	State	FY22-23 Proviso	10.6. (GSSM: Telepsychiatry) The Governor's School for Science and Mathematics shall establish and maintain, with the Department of Mental Health and the Medical University of South Carolina, a contractual relationship to provide psychiatric services from a licensed psychiatrist for its students upon the request of a student or the recommendation of a school employee who provides mental health services to students. The psychiatric services may be provided in person or through the use of telepsychiatry. The interactions between students and the psychiatrist shall be HIPPA compliant. Psychological fitness for continued attendance at the school shall be determined solely by the psychiatrist providing psychiatric services to a student. A student who receives psychiatric services from a psychiatrist may continue to receive those services in lieu of receiving services as provided for in this provision.	Funding agency deliverable(s)		Added
Proviso 10.1	State	FY22-23 Proviso	10.1. (SDE: Governor's School for Science & Math) Any unexpended balance on June thirtieth of the prior fiscal year of funds appropriated to or generated by the Governor's School for Science and Mathematics may be carried forward and expended in the current fiscal year pursuant to the direction of the board of trustees of the school.	Funding agency deliverable(s)	Formerly Proviso 1.7	No Change
Proviso 117.15	State	FY22-23 Proviso	117.15. (GP: Allowance for Residences & Compensation Restrictions) That salaries paid to officers and employees of the State, including its several boards, commissions, and institutions shall be in full for all services rendered, and no perquisites of office or of employment shall be allowed in addition thereto, but such perquisites, commodities, services or other benefits shall be charged for at the prevailing local value and without the purpose or effect of increasing the compensation of said officer or employee. The charge for these items may be payroll deducted at the discretion of the Comptroller General or the chief financial officer at each agency maintaining its own payroll system. This shall not apply to the Governor's Mansion, nor to guards at any of the state's penal institutions and nurses and attendants at the Department of Disabilities and Special Needs, and registered nurses providing clinical care at the MUSC Medical Center, nor to the Superintendent and staff of John de la Howe School, nor to the cottage parents and staff of Wil Lou Gray Opportunity School, nor to full-time or part-time staff who work after regular working hours in the SLED Communications Center or Maintenance Area, nor to adult staff at the Governor's School for Science and Mathematics and the Governor's School for Arts and Humanities who are required to stay on campus by the institution because of job requirements or program participation. Any state institution of higher learning may provide complimentary membership privileges to employees who work at their wellness centers. The presidents of those state institutions of higher learning authorized to provide on-campus residential facilities for students may be permitted to occupy residences on the grounds of such institutions without charge.	Requires a manner of delivery		No Change

Law number	Jurisdiction	Type	Description	Purpose the law serves:	Notes:	Changes made during FY2025
Proviso 117.43	State	FY22-23 Proviso	117.45. (GP: Facility Rental Fee) The Governor's School for the Arts and Humanities, Governor's School for Science and Mathematics, Wil Lou Gray Opportunity School, and John de la Howe School are authorized to charge, collect, expend and carry forward fees charged for facility and equipment rental and registration	Funding agency deliverable(s)		No Change
Proviso 1A.4	State	FY22-23 Proviso	1A.4 (SDE-EIA: Teacher Salaries/State Agencies) Each state agency which does not contain a school district but has instructional personnel shall receive an appropriation as recommended by the Education Oversight Committee and funded by the General Assembly for teacher salaries based on the following formula: Each state agency shall receive such funds as are necessary to adjust the pay of all instructional personnel to the appropriate salary provided by the salary schedules of the school district in which the agency is located. Instructional personnel may include all positions which would be eligible for EIA supplements in a public school district, and may at the discretion of the state agency, be defined to cover curriculum development specialists, educational testing psychologists, psychological and guidance counselors, and principals. The twelve-month agricultural teachers located at Clemson University are to be included in this allocation of funds for base salary increases. The South Carolina Governor's School for the Arts and Humanities and the South Carolina Governor's School for Science and Mathematics are authorized to increase the salaries of instructional personnel by an amount equal to the percentage increase given by the School District in which they are both located.	Report our agency must/may provide		No Change
Proviso 10.1	State	FY22-23 Proviso	(GSSM: Carry Forward) Any unexpended balance on June thirtieth of the prior fiscal year of funds appropriated to or generated by the Governor's School for Science and Mathematics may be carried forward and expended in the current fiscal year pursuant to the direction of the board of trustees of the school.	Funding agency deliverable(s)		No Change

Law number	Jurisdiction	Type	Description	Purpose the law serves:	Notes:	Changes made during FY2025
Proviso 10.6	State	FY22-23 Proviso	(GSSM: Telepsychiatry) The Governor's School for Science and Mathematics shall establish and maintain, with the Department of Mental Health and the Medical University of South Carolina, a contractual relationship to provide psychiatric services from a licensed psychiatrist for its students upon the request of a student or the recommendation of a school employee who provides mental health services to students. The psychiatric services may be provided in person or through the use of telepsychiatry. The interactions between students and the psychiatrist shall be HIPPA compliant. Psychological fitness for continued attendance at the school shall be determined solely by the psychiatrist providing psychiatric services to a student. A student who receives psychiatric services from a psychiatrist may continue to receive those services in lieu of receiving services as provided for in this provision	Requires a manner of delivery		No Change

2025		Services Data as submitted for the Accountability Report by: H650 - GOVERNOR'S SCHOOL FOR SCIENCE AND MATH						
Description of Service	Description of Direct Customer	Customer Name	Others Impacted by Service	Division or major organizational unit providing the service.	Description of division or major organizational unit providing the service.	Primary negative impact if service not provided.	Changes made to services during FY2025	Summary of changes to services
Advanced Educational Programs	General public and subsections to include families with school-age children appropriate for GSSM program participation.	South Carolina Students	Higher Education, Business Partners, General Public	Academics	Advanced Curriculum and Training	Fewer opportunities for advanced STEM education.	No Change	
Provide Residential Environment for Well-being and Development	Families with school-age children appropriate for GSSM program participation.	South Carolina Students		Student Development	Provide Residential Environment for Well-being and development of students staying on-campus	High-level educational process will be compromised and hinder learning.	No Change	
Advanced Educational Programs - Statewide, grades 7-12, Teacher Development & Growth	General public and subsections to include families with school-age children appropriate for GSSM program participation.	South Carolina Students	Higher Education, Business Partners, General Public, School Districts	Outreach	Statewide Educational Programs for students and Teachers, to include Engineering, Summer Camps, 9th grade Algebra II, Professional Development for Teachers and Distance Education in Advanced Courses.	Fewer opportunities to expose younger students to STEM opportunities provide by GSSM.	No Change	
Meet Reporting and Stewardship Needs	General public and taxpaying citizens of South Carolina	Taxpayers of South Carolina	Executive and Legislative Branch, General Public, Business Partners	Administration	Meet Reporting and Stewardship Needs	Risk of underspending or overspending in areas of GSSM.	No Change	

2025	<u>Partnerships Data</u> as submitted for the Accountability Report by: H650 - GOVERNOR'S SCHOOL FOR SCIENCE AND MATH		
	Type of Partner Entity	Name of Partner Entity	Description of Partnership
			Change to the partnership during the past fiscal year
Private Business Organization	Business/Industry Partnerships	Outreach and Residential efforts and support to include Accelerate Engineering, Economics and Finance, Mandarin Chinese Foreign Language Instruction and many others	No Change
Higher Education Institute	Clemson University	Course equivalency agreements for course credit. Summer Advanced Research placements of GSSM students on campus and with University Scientists	No Change
Higher Education Institute	Coker University	Dual Enrollment agreements for course credit.	No Change
Higher Education Institute	College of Charleston	Summer Advanced Research placements of GSSM students on campus and with University Scientists	No Change
Higher Education Institute	MUSC	Summer Advanced Research placements of GSSM students on campus and with University Scientists	No Change
K-12 Education Institute	S.C. Elementary Schools	Provide Teacher Training and Outreach Programs for teachers and students. Recruit and partner on educational Initiatives	No Change
K-12 Education Institute	S.C. High Schools	Provide Teacher Training and Outreach Programs for teachers and students. Recruit and partner on educational Initiatives	No Change

Type of Partner Entity	Name of Partner Entity	Description of Partnership	Change to the partnership during the past fiscal year
K-12 Education Institute	S.C. Middle Schools	Provide Teacher Training and Outreach Programs for teachers and students. Recruit and partner on educational Initiatives	No Change
Higher Education Institute	S.C. State University	Summer Advanced Research placements of GSSM students on campus and with University Scientists. Teacher Training and Engineering partnerships	No Change
K-12 Education Institute	School Districts in South Carolina	Provide Teacher Training and Outreach Programs for teachers and students. Recruit and partner on educational Initiatives	No Change
Higher Education Institute	University of South Carolina	Course equivalency agreements for course credit. Summer Advanced Research placements of GSSM students on campus and with University Scientists	No Change
Higher Education Institute	Francis Marion University	Dual Enrollment agreements for course credit.	No Change
Higher Education Institute	South Carolina Technical College System	Summer STEM camps.	Add

2025

Reports Data

as submitted for the Accountability Report by:

H650 - GOVERNOR'S SCHOOL FOR SCIENCE AND MATH

Report Name	Law Number (if applicable)	Summary of information requested in the report	Date of most recent submission DURING the past fiscal year	Reporting Frequency	Type of entity/entities	Method to access the report	Direct access hyperlink or agency contact (if not provided to LSA for posting online)	Changes to this report during the past fiscal year	Explanation why a report wasn't submitted
Annual State Audit	SECTION 11-7-20	Policies and Procedures review, Variances in Line Items, Justifications	July 2023	Annually	South Carolina state agency or agencies	Electronic copy available upon request	https://osa.sc.gov/wp-content/uploads/2025/04/Governors-School-for-Science-and-Math-Final-Report-H64.pdf	No Change	
S.C. School Report Card	SECTION 59-18-110	Benchmarks and metrics in comparison to public schools	October 2023	Annually	South Carolina state agency or agencies	Electronic copy available upon request	https://screportcards.com/overview/?q=T0yMDI0InQ9RCZzaWQ9NTM5NTAwMA	No Change	
SC Governor's School for Science and Mathematics Annual Budget		Budget Priorities and Justifications - For Approval	September 2023	Annually	South Carolina state agency or agencies	Electronic copy available upon request	Finance and Operations Department 843-383-3901	No Change	
State Budget Request		Budget Priorities and Justifications	September 2023	Annually	Governor or Lt. Governor AND Legislative entity or entities AND South Carolina state agency or agencies	Electronic copy available upon request	Finance and Operations Department 843-383-3901	No Change	
State Human Affairs Commission Report to the General Assembly	SECTION 1-13-110	Hiring and Minority Employment Assessment	February 2024	Annually	Legislative entity or entities AND South Carolina state agency or agencies	Electronic copy available upon request	Finance and Operations Department 843-383-3901	No Change	

AGENCY NAME:	South Carolina Governor's School for Science and Mathematics		
AGENCY CODE:	H650	SECTION:	10

2025 Accountability Report

SUBMISSION FORM

I have reviewed and approved the data submitted by the agency in the following templates:

- Data Template
 - Reorganization and Compliance
 - FY2025 Strategic Plan Results
 - FY2026 Strategic Plan Development
 - Legal
 - Services
 - Partnerships
 - Report or Review
 - Budget
- Discussion Template
- Organizational Template

I have reviewed and approved the financial report summarizing the agency's budget and actual expenditures, as entered by the agency into the South Carolina Enterprise Information System.

The information submitted is complete and accurate to the extent of my knowledge.

AGENCY DIRECTOR <i>(SIGN AND DATE):</i> <i>(TYPE/PRINT NAME):</i>	<div style="display: flex; justify-content: space-between; align-items: center;"> <div style="flex-grow: 1;"> SIGNATURE ON FILE </div> <div style="text-align: right;"> Signature Received: 09/15/2025 </div> </div> <hr style="border: 0.5px solid black; margin-top: 10px;"/> <div style="text-align: left;"> Daniel S. Dorsel </div>
--	--

BOARD/CMSN CHAIR <i>(SIGN AND DATE):</i> <i>(TYPE/PRINT NAME):</i>	<div style="display: flex; justify-content: space-between; align-items: center;"> <div style="flex-grow: 1;"> SIGNATURE ON FILE </div> <div style="text-align: right;"> Signature Received: 09/15/2025 </div> </div> <hr style="border: 0.5px solid black; margin-top: 10px;"/> <div style="text-align: left;"> Robert J. Brown </div>
---	---