



# **2025 Annual Accountability Report**

**Clemson University Public Service  
Activities (PSA)**

**Agency Code: P200**

---

# Table of Contents

Agency's Discussion and Analysis .....	1
Agency Organization Chart .....	9
Reorganization and Compliance .....	10
Strategic Plan Results .....	12
Strategic Plan Development .....	19
Budget Data .....	27
Legal Data .....	29
Services Data.....	52
Partnerships Data.....	54
Reports Data .....	60
Submission Form .....	61

AGENCY NAME:	Clemson University - PSA		
AGENCY CODE:	P200	SECTION:	045

## AGENCY'S DISCUSSION AND ANALYSIS

### CLEMSON EXPERIMENT STATION (<https://www.clemson.edu/cafls/research/>)

The Experiment Station continues to work collaboratively, supporting research and outreach across South Carolina. Not only is research being conducted on the University campus, but at the Research and Education Centers (RECs) located across South Carolina. They are strategically located to conduct agricultural research in representative conditions of South Carolina's distinct soil and climate regions, benefiting a variety of producers in those locations. These RECs, collectively known as the Clemson Experiment Station, are part of a nationwide system of scientists working to improve the quality of life. The Experiment Station participates in 4 out of 5 of Clemson's Critical Issues and continues to provide comprehensive support and are committed to excellence in research with the goal of preparing the next generation of agricultural professionals and individuals with research possibilities; interacting, educating, and promoting an environment in support of these individuals becoming productive citizens not only in South Carolina but around the world. We will continue providing information and solutions to economic and world issues to the citizens of South Carolina and the world through research activities conducted through the Clemson Agricultural Experiment Station.

*Agribusiness and Community Development:* The focus of the STEM project was to revitalize an interest in agriculture as a career path and ensure secondary school students enrolled in school-based agricultural education programs throughout the nation have the requisite competencies to succeed in college and careers. The target audience was secondary agriscience teachers and their students enrolled in school-based agricultural education programs. Clemson provided research-based, professional development that empowered agricultural educators with an increased awareness of the practices, cross-cutting concepts, and disciplinary core ideas included in the agriscience program. This increased awareness was accompanied by modified curricula to guide secondary agriscience teachers in highlighting STEM concepts and ideas in the lessons they teach, positively impacting student learning outcomes. Additional stakeholders such as state agricultural education leaders, secondary school administrators, and business and industry leaders have benefited from the outcomes of the programs designed for secondary agriscience teachers and the dissemination of research findings and professional briefs.

Another objective for FY2024-2025 was to improve nutrient use efficiency in dairy production systems through a more efficient use of high-quality forages. Researchers worked to improve our understanding of how caffeine might influence important metabolic processes in the rumen when a lactating cow diet is used. Effects of different fat sources on nutrient digestion and fermentation can vary depending on dietary fat concentration and the forage-to-concentrate ratio. Including dietary fat can increase the energy density of diets fed to ruminants and cause a strategic reduction of dry matter intake for precision-fed dairy heifers. The study also screened the effects of fat sources supplemented at different concentrations to high- and low-forage diets intended to be fed to growing dairy heifers on in vitro digestibility and fermentation. The accomplished works help better understand factors that influence productivity and, therefore, milk production efficiency, which can help improve the dairy industry's sustainability. Nutrition research has provided knowledge on practical aspects of forage production and dairy cattle nutrition. Clemson also successfully developed field robotic systems to estimate biomass in monocultures of alfalfa, tall fescue, and bermudagrass and were developed to measure crop morphology (crop height) and crop distribution. Using precision technologies can also help the dairy industry stay sustainable.

*Agrisystems Productivity and Profitability:* Most southern soils have low soil organic matter, limited moisture, nutrient holding capacity, and many have a subsurface compacted zone limiting root penetration, which predisposes crops to drought stress and reduces yields. Excessive tillage, inadequate crop rotations, residue removal, overgrazing, and increasingly extreme weather events further degrade soil health and fertility and worsen compaction. Though cover crops can reduce soil compaction, build soil organic matter, restore soil health, improve biodiversity and reduce weed pressure, few row crop farmers currently use them. Field trials were conducted for suitable cover crop varieties. Scientists evaluated the performance of different varieties, and the study suggested that grass cover crops were better than clover, radish, and vetch in terms of biomass production, ground cover, and weed suppression, which is useful information for farmers. This information will result in healthier soils and reduced soil compaction, less use of herbicides and fertilizers, and thus greater economic viability and environmental sustainability of cropping systems.

Water quality and quantity treatments are critical components of sustainable crop production. Multiple water quality and quantity issues exist at the interface of agricultural, urban, and ecological landscapes. These issues (e.g., harmful algal blooms, PFAS contamination, runoff quality, operational water quality, and flooding) impact the sustainability and security of all three systems. Sustainable water resource tools, technologies, and techniques developed could help answer various intriguing water quantity and questions related to the behavior of urban and agricultural micro-watersheds, watershed management, runoff management, crop management, stormwater, stream restoration science, harmful algal blooms and many more. Growers of nursery and greenhouse crops now have access to this new technology that can remove phosphorus from operational water or runoff before it leaves an operation, helping to better protect downstream ecosystems.

Clemson developed an ecological understanding of improved management practices for and reduced economic losses to major pests of field crops. The target audience of growers, Extension agents, consultants, government (e.g., USDA), and university

<b>AGENCY NAME:</b>	<b>Clemson University - PSA</b>		
<b>AGENCY CODE:</b>	<b>P200</b>	<b>SECTION:</b>	<b>045</b>

stakeholders were able to use the information and recommendations generated to judiciously apply pesticides where, when, and/or if needed, ultimately benefiting the environment and increasing profitability. Grower fields demonstrated that soil samples taken contained significant populations of plant-parasitic nematodes that could be recovered using standard techniques and used to project levels of nematode damage to crops. Certain nematode species increased in treatments that did not have a nematicide applied or that were planted in susceptible soybean varieties.

*Environmental and Natural Resources Conservation:* A Clemson research project investigated how active forest management impacts environmental variables such as fuel accumulation, vegetation, water quality, and erosion, and helped managers restore ecosystems and implement best management practices. Four prescribed fires were conducted, two of which were intentionally allowed to burn at high intensity, providing rare opportunities to simulate wildfire at the landscape scale. Researchers assessed the long-term impacts of fire and fire surrogate treatments have on forest structure. It also explored how native herbaceous vegetation responds to various silvicultural practices in longleaf pine ecosystems. An ongoing project focuses on the effects of wildfire severity and post-fire precipitation on the fate and transport of nitrogen in terrestrial-aquatic interface. This research has significant regional, national, and global implications. The target audiences of landowners, state and federal agencies, scientists, and non-profits have benefited from the dissemination of our research findings and the broader public in that it provides scientific information to inform the sustainable management of forest ecosystems. Clean water and healthy soil are among the most important ecosystem services that forests provide.

Researchers focused on two understudied arthropod groups, medically important arthropods - principally biting flies, and beetles, with a secondary focus on other terrestrial arthropods occurring in forest soil and leaf litter. These groups collectively play numerous roles in ecological, economic, and public health systems. Concerns with issues related to blood-feeding flies were of great medical and veterinary importance. The research approach was proactive, focusing on the increased risk of invasive species. Case studies of invasive species were completed, with analyses demonstrating the importance of taxonomic work in resolving species identities and source areas of invasive species. The target audience included arthropod taxonomists, students, medical-veterinary entomology, and integrated biological and physical sciences at local, state, federal, and private universities and other agencies. Conserving diverse arthropod communities has numerous downstream benefits to human communities. The services provided include pollination, nutrient cycling in aquatic and terrestrial environments, maintaining soil health, and natural pest control. Possible means of controlling and managing these pests and diseases were provided to the scientific community, health and environmental agencies and the public.

*Food Safety, Security and Nutrition:* A fresh market-focused lima bean breeding program focused on developing succulent beans with improved quality and heat tolerance for the southeastern US. Evaluated traits include yield, disease symptoms and severity, flowering date, plant architecture, and leaf shape. Succulent seed samples were frozen at harvest for nutritional quality assessment. High temperatures during flowering drastically lowers snap bean yields reducing grower's profits. Snap bean varieties were identified from the marketable snap beans rather than the standard commercial cultivar under heat stress, which has the potential to make domestic production more resilient to rising temperatures and increase profits for growers. Lima beans are a culturally important vegetable in the southeastern US, but growers in the region regularly face yield loss from lima bean anthracnose, a fungal disease that compromises plant productivity and seed quality. The target audiences reached included growers, processors, and Extension agents that were able to see the pod production variation under variable growing conditions during field days. The broader public indirectly benefited from these activities through the potential to increase the sustainability and stability of bean (snap and lima) production through fluctuating climatic conditions. Consumers in the southeastern US will benefit through the improvement of snap and butter bean quality.

Researchers determined that plant genetic diversity has been decreasing yet remains an essential tool to combat stressors imposed by annual crop production challenges. Developing and utilizing crop genetic resources is vital to supply commodity and small-scale farms with new crop varieties that resist diseases, pests, and abiotic stress. Genotypes were selected based on known deficiencies in specific immunogenic proteins, and one was chosen for its resistance to root-knot nematodes, with the objective of studying the impact of heat stress during anthesis on seed protein content and composition. The research team is also characterizing natural antimicrobial activity in sorghum that would be important to reduce the threat of prevalent foodborne pathogens. This work is discovering sorghum germplasm and genes that increase antimicrobial compounds in the mature grain that would benefit its use as a primary ingredient in poultry but also potentially have natural benefits in human and pet food products. Clemson continues to develop and release new sorghum genetics that resist disease and are productive in the southeastern US. Also, two new genetic populations and one winter dual-purpose oat cultivar for the Southeast were developed. This cultivar release will benefit farmers in the region while genetic populations will better equip breeders to release additional varieties and hybrids in the coming years. Decreasing the reliance on crop imports from international providers makes the US less dependent on international crop production and foreign trade, both of which can be volatile. Domestic production of feed grains and commodity row crops increases the safety and quality of food, feed, and fiber products and can provide better ingredients for consumer goods.



<b>AGENCY NAME:</b>	<b>Clemson University - PSA</b>		
<b>AGENCY CODE:</b>	<b>P200</b>	<b>SECTION:</b>	<b>045</b>

*Risk Assessment and Mitigation Strategies for Clemson Experiment Station:* The Clemson Experiment Station conducts research on the main campus at Clemson University and on each of the six Research and Education Centers across the state that benefits South Carolina agriculture and natural resources. Failure to fulfill our research mission would result in decreased public opinion regarding our research program, decreased research funding levels to continue support of our mission, and dramatic impacts on multiple stakeholder issues. These issues include agriculture and forest productivity and profitability and research-based recommendations that impact water quality and environmental sustainability through policies or on-farm practices. If Clemson is unable to fulfill our research mission, some of these impacts could be partially mitigated via collaborations with neighboring land-grant institutions. However, full mitigation is likely impossible.

## **LIVESTOCK POULTRY HEALTH ([www.clemson.edu/public/lph](http://www.clemson.edu/public/lph))**

*South Carolina Meat-Poultry Inspection Department (SCMPID):* SCMPID completed its annual State Review and Communication Tool (SCRT) assessment by the USDA Food Safety Inspection Service and continued to be designated as “at least equal to.” This review is submitted and reviewed by FSIS to ensure a safe, wholesome, properly labeled meat and poultry supply. The South Carolina program continues to meet or exceed the federal requirements. Department activities included 100% online inspection on 1,292 slaughter days during slaughter operations that processed 20,007 livestock and more than 2.3 million poultry. Additionally, the department performed 30,283 individual inspection procedures during 6,743 inspection days in 74 slaughter and processing establishments that were served.

If SCMPID was unable to meet its goal and objective of protecting the health of consumers by providing a comprehensive inspection service to ensure safe, properly labeled, wholesome meat and poultry products through inspections and regulation in state and federal cross-utilization meat and poultry plants, then unsafe, improperly labeled, and unwholesome meat and poultry products could enter commerce and potentially be consumed by citizens of South Carolina. This could lead to food-related illness and even death from consuming these products. If this occurs, outside assistance from the South Carolina Department of Public Health, South Carolina Department of Agriculture, and USDA Food Safety Inspection Service (USDA FSIS) will most likely be required. These agencies could assist with additional inspection personnel, information-gathering capacity, and access to additional resources.

To help resolve the issue before it became a crisis, the General Assembly could increase funding for SCMPID general operating costs to fill the deficits created by cuts in federal USDA FSIS grants, temporarily authorize paid overtime, make additional state funds available to cover this overtime and allow and streamline the hiring of short-term temporary staff.

*Clemson Veterinary Diagnostic Center (CVDC):* Potential Risk and Negative Impact: Not being able to provide diagnostic, regulatory, and surveillance testing services meeting the South Carolina animal industry’s increasing testing requirements for national and international trade or during a catastrophic event would negatively impact animal health, movement, trade, food safety, and public health.

Mitigation strategies:

1. Identify other State or veterinary diagnostic labs to outsource testing temporarily, until the lab is functional.
2. Procure and set up a mobile lab to provide testing for high-priority samples.
3. Provide emergency funding during a catastrophic event.
4. Request the General Assembly to provide the CVDC with additional funds to upgrade the laboratory’s physical structure and increase testing capabilities to meet South Carolina’s animal agriculture needs and remain competitive in national and international trade.

One thing to consider is ‘necropsy of animals’. In this situation, a large dead animal cannot be shipped to another lab, and clients will no longer have access to necropsy services. One solution could be encouraging veterinarians to perform field necropsies and share pictures with pathologists for consultation. Tissues can be sent to other labs for histopathology and other required tests.

Requests for the General Assembly:

1. Immediate emergency funding during a catastrophic event.
2. Provide the CVDC with additional funds to upgrade the laboratory’s physical structure and increase testing capabilities to meet South Carolina’s evolving animal agriculture needs.
3. Possible compensation to veterinarians to encourage field necropsies of dead animals.

*Animal Health Programs (AHP):* Potential Risk and Negative Impact: South Carolina has a robust poultry and livestock industry. Poultry processing and poultry and egg production account for approximately \$3.51 billion in the direct economic output of South Carolina. The programs are responsible for preparing for additional animal health threats like the reintroduction of New World Screwworm into the United States. This infestation poses a zoonotic threat to all warm-blooded animals.

Last year, the AHP conducted 12 possible reported foreign animal disease investigations and responded to two foreign animal disease cases (one case of highly pathogenic avian influenza (HPAI) H5N1 in a World Organization of Animal Health-defined commercial flock in Spartanburg County, and a case of contagious equine metritis in Colleton County). The AHP also responded to two USDA federal orders monitoring HPAI H5N1 affecting lactating dairy cattle. Working with the South Carolina Department of Agriculture, the AHP assisted in testing 21 South Carolina dairies meeting the December 2024 USDA’s federal order dairy definition for South Carolina to reach negative status.

<b>AGENCY NAME:</b>	<b>Clemson University - PSA</b>		
<b>AGENCY CODE:</b>	<b>P200</b>	<b>SECTION:</b>	<b>045</b>

The potential risks of not being able to hire staff, and to perform animal disease investigations, animal disease responses, animal disease traceability, and livestock market inspections in a catastrophic event will negatively impact the state's public and animal health which would result in mass animal carcass issues, animal movement, national and international trade, food safety and availability, and disrupt the commercial industry and state's economy.

Risk assessment and mitigation strategies: Pending the cause of the catastrophic event, mitigation strategies may include:

1. Communicate with veterinarians and the commercial animal industry stakeholders for disaster and disease preparedness.
2. Work with emergency management and other external stakeholder groups to develop teams for preparedness and response.
3. Identify neighboring state and federal agencies to request trained personnel for assistance.
4. Being allowed in the new CAFLS alignment to hire staff without interference, using legislatively mandated funding to complete our duties listed in South Carolina law and regulations.

Minimal requests will be made to the General Assembly for:

1. Immediate emergency funding to assist in relief and response efforts.
2. Overtime and appropriate compensation for responders assisting with events.

### **REGULATORY SERVICES** ([www.clemson.edu/public/regulatory](http://www.clemson.edu/public/regulatory))

Regulatory Services protects the state from exotic and invasive species, ensures that pesticides are used safely and according to state and federal law, regulates the structural pest control industry, verifies that fertilizer and lime meet standards and labeled guarantees, conducts programs for seed and organic certification, provides diagnosis of plant pests, soil, and other agricultural related lab analyses, and ensures readiness to respond to a catastrophic event impacting the state's agriculture. The impact on the public if Clemson Regulatory Services is unable to fulfill its mission would be: 1) an increased risk to environmental and human health from potential pesticide misuse, 2) loss of productivity for growers due to poor fertilizer quality or a lack of soil nutrient testing, 3) increased risks from plant insects or diseases due to reduced plant pest identification, monitoring, and control programs in agriculture, forestry, and the plant nursery industry, 4) loss of emergency response for natural disasters under the state ESF-17 Plan. Continued funding from the SC General Assembly for recurring and non-recurring program needs will ensure that Regulatory Services will be able to continue to meet our state and federal program requirements and protect South Carolina agriculture.

*Agriculture Services Lab:* If the Agriculture Services Lab (ASL) were no longer able to function, the agricultural and horticultural communities would not have a cost-effective agricultural testing laboratory within SC to ensure nutrient content and management for crop production. Additionally, testing required for permitting of agricultural animal facilities and land application of solid waste could not be completed in SC. Researchers from universities, state and federal agencies, and industry would not have access to this reliable and affordable analytical testing lab.

*Fertilizer Regulatory and Certification Services:* Fertilizer Regulatory and Certification Services regulates the manufacture, label, registration, and content of fertilizers, liming materials, and soil amendments, as well as administers the Certified Seed/Turfgrass program and assists with the solar pollinator program statewide. Without the oversight of FRCS, consumers would not have protection from purchasing inadequate agricultural fertilizers and liming materials, and the public would be endangered by unregulated sales of explosive fertilizer materials, like those used in the Oklahoma City bombing. Furthermore, negative economic impacts would occur from the loss of certified seed/turfgrass crops. The solar pollinator program helps provide habitat for pollinators and assorted wildlife. If FRCS could not continue to conduct these programs, other agencies such as the South Carolina Department of Agriculture, South Carolina Department of Environmental Services, Homeland Security, and the SC Department of Natural Resources could assist.

*Department of Pesticide Regulation:* The Department of Pesticide Regulation (DPR) is the Regulatory Agency for all Pesticide Laws and Programs in South Carolina. One of these programs is the Federal Worker Protection Standard Regulation (40:CFR 170), which DPR contracts with EPA to implement and enforce in South Carolina. This regulation is critical to ensure the health and safety of agricultural farm workers and agricultural growers in South Carolina. It would be detrimental to the safety and well-being of South Carolina's agricultural community if DPR investigators were unable to inspect these operations (farms, forests, nurseries, and greenhouses) to ensure pesticides are applied properly and documented appropriately; agricultural growers and workers are protected from pesticide exposure; pesticide safety training is conducted and proper personal protective equipment is available and utilized by applicators, pesticide handlers and agricultural workers.

Another program that the DPR contracts with EPA is the Integrated Pest Management (IPM) in Schools program. This program deals with pesticide use and safety in our public-school systems. This program educates public school systems on how to handle pest management and chemicals properly and safely around school children and school staff. The inability of investigators to inspect and educate school systems could lead to the possibility of pesticides not being used in the safest and least contact manner in our public-school systems.

DPR also contracts with EPA regarding the inspection of companies that produce or repackage pesticide products in South Carolina. Specially trained inspectors routinely inspect these companies to ensure they are producing or repackaging pesticide products that are

<b>AGENCY NAME:</b>	<b>Clemson University - PSA</b>		
<b>AGENCY CODE:</b>	<b>P200</b>	<b>SECTION:</b>	<b>045</b>

properly registered with EPA and the SC DPR. Misbranded, illegal pesticide products and products that could cause harm to humans, animals, and the environment could be produced and released to the public if DPR inspectors were not allowed to conduct these inspections across the state.

The Department of Pesticide Regulation handles the approval of all continuing certification programs for the recertifying of licensed pesticide applicators in the state of South Carolina. These recertification programs are necessary to ensure pesticide applicators continue their training of new pesticide products, labeling changes, and pesticide use. If the recertification approval program was eliminated and training programs were not available, then the state could see pesticide misuse situations increasing such as pesticide drift, poisoning, health issues, and overall adverse effects on humans and the environment.

***Invasive Species Program:*** The invasive species program within the Department of Plant Industry manages and conducts early detection surveys for invasive plant pest species that pose a threat to South Carolina agriculture and natural resources. The program implements quarantines, uses surveys to monitor pest populations, and applies treatments to contain or eradicate plant pests. If these surveys were not carried out to detect potential invasive plant pests or to identify and treat currently infested sites, the South Carolina agricultural industry would face a greater risk from undetected pest problems and/or closed interstate and international markets. Other states and countries often prohibit commodities and products without verification of pest freedom, as provided by survey results and treatment reports obtained by plant pest regulatory agencies. If Clemson's Department of Plant Industry could not carry out these surveys and treatments, the risk of pest damage from invasive species to South Carolina's agricultural industry and the environment would be increased.

***Apiary Program:*** The Apiary Inspection Program (AIP) works closely with Clemson Extension's Apiculture Specialist, the South Carolina Beekeepers Association, the South Carolina Farm Bureau Apiculture Committee, the Apiary Inspectors of America, and local beekeepers' associations in SC. The AIP Manager attends regularly held meetings and is frequently asked to speak and present on honey bee-related topics. Much of this work is outreach and education. However, inspections, certification of honeybee shipments, and response to honey bee pests are critical parts of this program. If the AIP within the Department of Plant Industry (DPI) were unable to complete these duties, the beekeeping industry would lose a partner to conduct inspections, collect diseased samples, and assist with import and export requirements. The AIP also leads the yellow-legged hornet survey and eradication efforts. Populations of this invasive hornet, native to Asia, have only been documented in North America in and around Savannah, GA, which includes Jasper and Beaufort counties in SC. Program staff have secured significant grant funding, staffing, and expertise needed to prevent yellow-legged hornet establishment in South Carolina.

***Asian Longhorned Beetle Program:*** The South Carolina Asian Longhorned Beetle (ALB) Eradication Program was formed in collaboration between Clemson University Department of Plant Industry (DPI) and the United States Department of Agriculture (USDA) on June 11, 2020, in response to the confirmed detection of ALB in Hollywood, SC. The ALB Program, funded through cooperative agreements with USDA in place since September 1, 2020, works to eradicate ALB from the state of South Carolina through multiple operation areas including survey, regulatory enforcement, tree removal, and outreach. The ALB Program primarily works in Charleston County and Dorchester County, but some operations occur as needed in other counties statewide. During FY24–25, the ALB Program surveyed 97,276 host trees, with 1,356 new detections inside the quarantine area. Tree removal eliminates the opportunity for the beetle to spread, and in FY24-25, the ALB Program removed 283 infested trees and 607 high-risk host trees. During FY24-25 the ALB Program met with entities working with regulated entities resulting in 41 compliance trainings, 17 new compliance agreements and executed 14 renewals. The ALB Program works to proactively educate the public about ALB and maintain good relationships with stakeholders in the community. The ALB Program developed and distributed printed outreach materials to property owners, residents, agencies, community groups, and organizations. During this period the ALB Program attended more than 20 organized events to share information and distribute outreach materials to approximately 3,982 stakeholders.

Managerial work included managing \$3.6 million in federal funding and soliciting for \$2.4 million in cooperative agreement funding through the USDA, maintaining a Memorandum of Agreement with College of Charleston and USDA to utilize 1.5 acres of land for an ALB Program office, purchasing equipment and supplies to support program activities and hiring three people to maintain a team of ten full-time dedicated ALB Program staff.

***Organic Program:*** During FY24-25, the Organic Certification Program offered certification under the following National Organic Program (NOP) scopes: Crop, Livestock, Processing, and Wild Crop. The program certified 74 operations, of which 11 carried more than one organic certification scope (meaning some combination of Crop and Livestock and/or Crop and Processor, or all three). For all 74 operations to complete the annual certification process, the program had to perform approximately 350 certification activities, which include organic system plan reviews, material input reviews, annual inspections, unannounced inspections, investigations, supply chain traceability audits, and compliance audits. 100% of certificate holders were inspected for compliance. 5% of operations were sampled for pesticide residue compliance. 5% of operations received unannounced inspections for compliance. The program issued 2 Minor Issues, 9 Notices of Noncompliance, and 1 Notice of Proposed Suspension. This program has seen an increase in the accreditation requirements as a result of recent regulation changes found in the Strengthening Organic Enforcement Rule. This resulted in form, policy, and quality system updates, as well as extensive training and outreach to the industry. It also expands the annual qualification and training requirements for inspection staff.

<b>AGENCY NAME:</b>	<b>Clemson University - PSA</b>		
<b>AGENCY CODE:</b>	<b>P200</b>	<b>SECTION:</b>	<b>045</b>

The program also participated in the Transition to Organic Partnership Program (TOPP), a \$50,000 cooperative agreement with USDA that supports funding for farmer-to-farmer mentoring, technical assistance and training, community building, and workforce training and development. This program hosted, co-hosted, and attended several TOPP workshops.

*Plant and Pest Diagnostic Clinic:* The Clemson University Plant and Pest Diagnostic Clinic (PPDC) of the Department of Plant Industry Labs Program is the state lab dedicated to handle all plant diagnostic samples in SC. PPDC is a member of the National Plant Diagnostic Network (NPDN), an internationally respected consortium of plant diagnostic laboratories. It receives samples from the Clemson Cooperative Extension Service offices, homeowners, farmers, landscapers, turfgrass management professionals, and researchers. PPDC also aids in the detection and documentation of new plant diseases and pests of regulatory concern in South Carolina. Dr. Xiao Yang is the Lead Diagnostician and Manager of the PPDC. Jordan Withycombe and Dr. G. Curt Coburn will serve as the back up diagnosticians when Dr. Yang is on leave. While it is unlikely all diagnosticians could not perform the diagnostic duties for any reason(s), samples will be forwarded to other NPDN diagnostic labs in other states under the coordination of the network to continue serving the clients and mitigate any negative impact on the public.

*Nursery Program:* During FY24-25, all required Grower and Dealer inspections were conducted for compliance with South Carolina regulations. Inspectors work throughout the year to provide certification of live nursery stock being sold in and out of South Carolina. This certification attests to the freedom of all pests listed on the State Plant Pest List and the relative freedom of other pests and diseases. During FY24-25, the program targeted all (100%) of the Growers. This program area is experiencing a boom in certified Growers. FY22-23 ended with 607 certified growers, and FY24-25 ended with 683 certified Growers, resulting in a 12.5 % growth in one year. This certification also provides the required documentation of pest freedom to ship nursery stock both domestically and internationally. This program has seen an increase in the volume of work required to perform these phytosanitary inspections, adding new domestic compliance programs, additions to the State Plant Pest List, and certifying South Carolina-grown peaches to Mexico. Inspectors also work with the Invasive Species program to assist with conducting various surveys throughout South Carolina to detect any pests, weeds, and/or insect species that can cause harm to South Carolina's agriculture and environment. A total of 683 Grower and 384 Dealer inspections were conducted in 2024. Resulting in a total of 1,067 compliance inspections conducted at the 3,086 nursery license holders in 2024. This work was conducted by a relatively new team and included continued staff training and development. This program also provides outreach to license holders and the public regarding state regulations for nursery stock.

*Regulatory Special Investigation Unit (SIU):* SIU handles all criminal investigations in Regulatory Services of both state and federal law. In the event we could not carry out our duties, we could not protect SC citizens and industries or honor our federal mandates. Recently, the US EPA began requiring all state pesticide regulatory programs to have criminal authority in the state laws.

#### **CLEMSON COOPERATIVE EXTENSION SERVICE ([www.clemson.edu/extension](http://www.clemson.edu/extension))**

Clemson Cooperative Extension Service is proud to serve the citizens of South Carolina in the areas of agronomic crops, agribusiness, agricultural education, food systems and safety, forestry and natural resources, horticulture, livestock and forages, rural health and nutrition, and 4-H youth development. During FY24-25, Clemson Cooperative Extension Service directly served 191,404 stakeholders through 3,197 programs and workshops, 9,892 one-on-one interactions, and 27,201,603 indirect contacts. While all efforts undertaken by Clemson Cooperative Extension Service staff were impactful, we highlight efforts in each program area.

*4-H Youth Development:* South Carolina 4-H is focused on preparing youth for the workforce by enhancing their STEM and digital literacy, with a particular emphasis on Artificial Intelligence (AI). While youth are familiar with AI tools like ChatGPT, they often lack understanding of how to use them responsibly and effectively. South Carolina 4-H secured funding from National 4-H Council and Google.org to develop the AI Education program, which promotes AI awareness, responsible usage, and skill development. A key output was the "AI in Agriculture" event display, showcased at the South Carolina State Fair and STEM SC events, and used by 4-H agents statewide. A 4-H-led classroom program used the Seek app to show 7th graders how AI helps identify plants, animals, and insects, sparking interest in its real-world role in agriculture. To date, the AI Education program has reached over 2,600 adults and 6,800 youth.

*Agribusiness:* The Clemson Extension Agribusiness Team supports growth in agriculture, natural resources, and community development by providing education on business and economic principles. The team offers vital tools and programs on enterprise budgeting, tax education, market outlooks, farm financial analysis, agritourism, entrepreneurship, business planning, and risk management to agribusinesses, farmers, lenders, and agricultural professionals. In FY24-25, Clemson's South Carolina Center for Cooperative Education Development (SCCED) supported over 130 businesses across sectors like agroforestry and seafood with year-round planning and analysis, helping secure \$2.1 million in funding and \$8.2 million in owner investment, which created 77 jobs and retained 18. With ongoing educational outreach and collaborations, the Center's efforts generated over \$10.3 million in direct economic activity, reinforcing its role in enhancing South Carolina's rural and agricultural economies.



<b>AGENCY NAME:</b>	<b>Clemson University - PSA</b>		
<b>AGENCY CODE:</b>	<b>P200</b>	<b>SECTION:</b>	<b>045</b>

**Agricultural Education:** The purpose of the Agricultural Education program is to equip South Carolina learners with the knowledge and skills in agriculture needed to become effective and engaged community leaders. To meet workforce demands and boost career readiness, South Carolina Agricultural Education is expanding industry engagement to connect youth and adult learners with career opportunities, certifications, and hands-on experiences through partnerships with industry and education institutions. Key events such as the FFA State Convention, Farmer and Agribusiness Convention, and specialty camps engaged over 2,800 learners and 100+ industry partners, resulting in increased student enrollment in technical programs and strengthened local industry connections. These efforts contribute to long-term workforce development and economic growth across the state, with ongoing impacts expected at both individual and community levels.

**Agronomic Crops:** The Clemson Extension Agronomic Crops Program Team provides information on agronomic crop production that enables row crop producers to improve the sustainability of farming operations. The Agronomic Crops team offered programs, workshops, and on-farm site visits to farmers across SC. Topics taught included crop production for cotton, sesame, peanuts, soybeans, corn, and small grains. In response to the loss of in-crop dicamba for cotton and soybeans, the Agronomic Crops Team provided in-person and virtual guidance on alternative herbicides, including EPA-mandated paraquat training, along with additional sessions on insect scouting, peanut maturity, cotton insect issues, and small grain and sorghum production.

**Expanded Food and Nutrition Education Program:** The mission of EFNEP is to assist low-income families with children and youth in acquiring the knowledge, skills, attitudes, and changed behavior necessary for nutritionally sound diets and to contribute to their personal development and the improvement of the total family diet and nutritional well-being. EFNEP served 20 counties and delivered both youth and adult programs to diverse audiences. At program completion, 94% of adults and 90% of youth improved nutrition practices, with additional behavior changes seen in food resource management (adults 89%, youth 58%), physical activity (adults 66%, youth 67%), and food safety (adults 68%, youth 59%)

**Food Systems and Safety:** With the growing popularity of home canning—often driven by trends on social media—misinformation about food preservation has become increasingly common, posing serious public health risks. Clemson Extension’s SC Master Food Preserver program trains volunteers to promote safe, science-based food preservation practices within their communities. Participants learn to identify critical differences between food types and preservation methods, equipping them to help prevent dangerous illnesses such as botulism. In FY24-25, the third cohort graduated, bringing the total to 35 certified volunteers who gave over 2,300 hours to expand food safety education in 22 of South Carolina’s 46 counties. By extending food safety messaging beyond Extension Agents, the Master Food Preserver program reduces public health risks, combats misinformation, and promotes healthier, more resilient communities through a growing network of trained volunteers.

**Forestry and Natural Resources:** The Clemson Extension Forestry and Natural Resources Program Team delivers educational initiatives that help South Carolinians manage forests and water resources effectively. Through programs like Carolina Yards, Master Rain Gardener, and South Carolina Master Naturalist, residents gain practical tools for sustainable landscaping, stormwater management, and conservation. Carolina Yards had record participation, certifying 65 eco-friendly yards and awarding 35 digital badges. The Master Rain Gardener program trained 76 individuals, contributing to at least 32 rain garden installations that improve water quality and mitigate flooding. The Master Naturalist Program certified 142 new volunteers who contributed over 24,000 hours of service. Collectively, these efforts reached more than 66,000 people and enhanced nearly 25,000 acres, advancing environmental stewardship and community resilience across the state.

**Horticulture:** Clemson Extension’s horticulture programs are vital to South Carolina’s economic growth, supporting both commercial growers and home gardeners through expert guidance and educational outreach. Horticulture Agents offer specialized knowledge in fruit and vegetable production, turf and landscape management, and ornamental plants. The Commercial Food Crop Program engaged over 1,100 growers across 45 events, enhancing practices in pest management, sustainability, and crop diversification. The School Gardening for South Carolina Educators initiative trained 246 educators, launched 48 new school gardens, and delivered over 6,400 transplants, while co-hosting the 2025 SC Farm to School Summit and developing new educational resources. The Home & Garden Information Center, Clemson’s most visited website with over 3.7 million views, addressed high demand for gardening guidance by providing practical, research-based resources. The Master Gardener program further extends outreach, with trained volunteers supporting community education and sustainable gardening practices. Together, these efforts strengthen local food systems, foster economic resilience, and promote sustainability across South Carolina.

**Livestock and Forages:** The Livestock and Forages Program Team supports South Carolina’s animal agriculture and forage producers by promoting environmental sustainability, production efficiency, and profitability through research-based, unbiased information. The Confined Animal Manure Management (CAMM) certification program, essential for poultry producers’ compliance with SC Regulation R.61-43 and environmental standards, certified or re-certified 980 producers in FY24-25 through 50 in-person trainings and 12 webinars. The team enhances beef cattle revenue through the Feeder Cattle Marketing Program, which sold 33 truckloads (2,803 head) of cattle, generating an

<b>AGENCY NAME:</b>	<b>Clemson University - PSA</b>		
<b>AGENCY CODE:</b>	<b>P200</b>	<b>SECTION:</b>	<b>045</b>

additional \$338,085 for producers by increasing prices by \$0.32/lb. As urban development and land use change accelerate, the team's educational efforts focus on emerging needs in soil health, pasture management, and forage establishment, through workshops on equine management, beef marketing, sustainable farming, and more, ensuring the long-term success of South Carolina's livestock and forage industry.

*Rural Health and Nutrition:* Diabetes affects 13.7% of South Carolina residents, with disproportionate impact on African American, low-income, and older adult populations. To address the need for improved self-management, Clemson University's Rural Health and Nutrition (RHN) agents conducted 27+ Health Extension for Diabetes (HED) cohorts statewide, enrolling 250+ participants in an evidence-based, ADA-recognized program. Participants received 8 one-hour educational sessions and follow-up support focused on nutrition, physical activity, stress, medication adherence, and communication with healthcare providers. Evaluations showed increased knowledge, medication adherence, physical activity, and self-efficacy, along with reduced sugary drink intake and weight loss, with long-term follow-up confirming sustained behavior change and continued use of learned strategies. The program, supported by partnerships with Prisma Health, the Medical University of South Carolina, and Clemson University School of Health Research, contributes to improved individual health, financial savings, and reduced strain on the healthcare system, particularly for under- or uninsured residents.

*Risk and Mitigation Strategies for Clemson Cooperative Extension Service:* Clemson Extension's mission is to improve the quality of life for all South Carolinians through education. The impact on the public if Clemson Extension is unable to fulfill its mission would be: 1) economic downturn for agricultural and forestry clients, 2) loss of guidance for agricultural and forestry production, 3) loss of licensure for private and commercial pesticide applicators, 4) loss of agricultural tax credits for CPAs, 5), loss of emergency preparedness for natural disasters, 6) loss of rural health and wellness, and 7) loss of life skills development for youth. Partnerships with surrounding states to provide educational services would be a possible mitigation strategy in the unlikely event Clemson Extension cannot fulfill its mission.

AGENCY NAME:

Clemson University - PSA

AGENCY CODE:

P200

SECTION:

045



College of  
**AGRICULTURE, FORESTRY  
AND LIFE SCIENCES**

DEAN

VICE PRESIDENT PUBLIC SERVICE AND AGRICULTURE (PSA)

Matthew T. "Matt" Holt

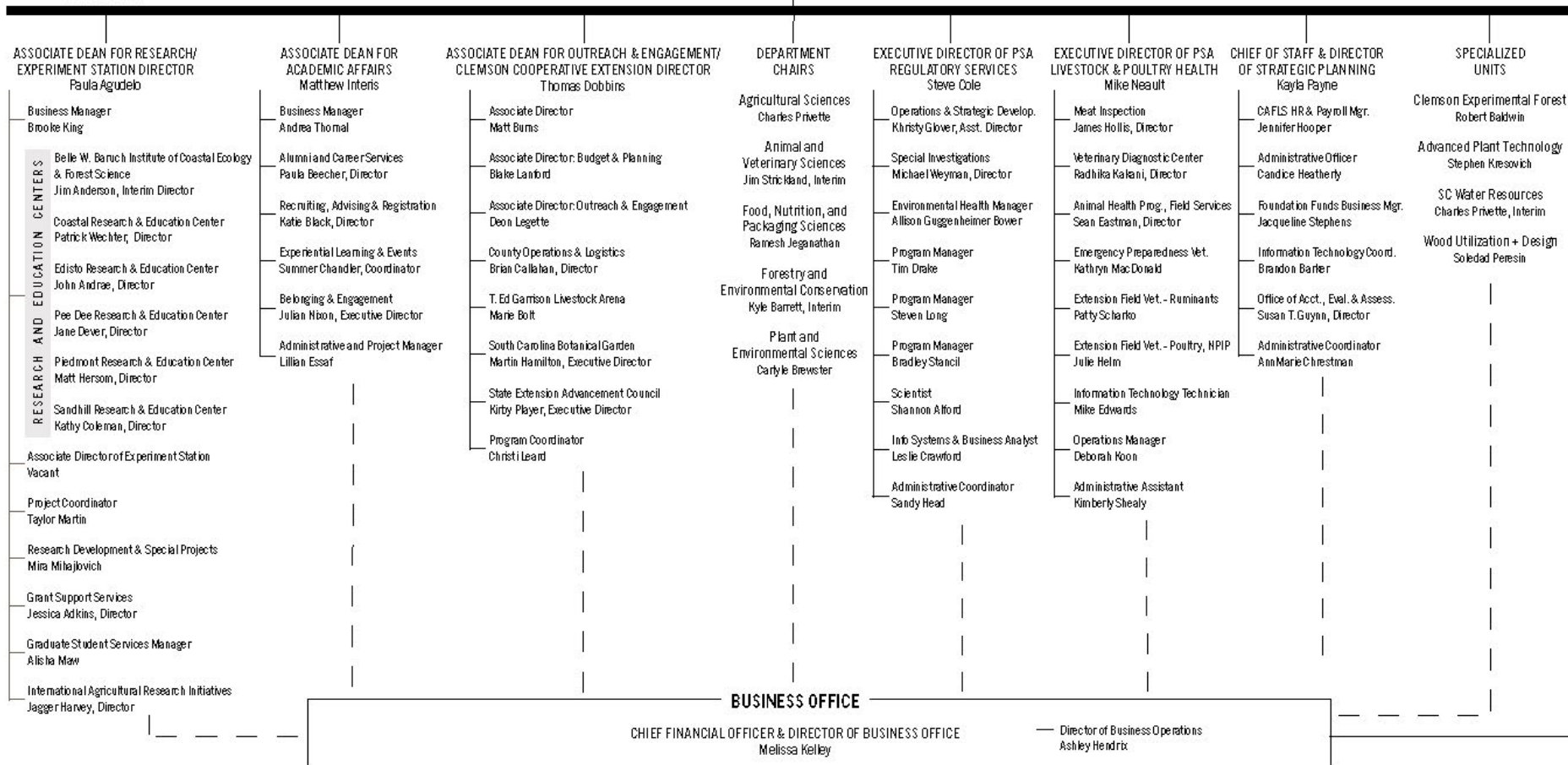
ADMINISTRATIVE COORDINATOR

Necole Richardson

NOTE

Development/  
Advancement and  
Marketing/  
Communications  
units indirectly  
report to the Dean.

EFFECTIVE: 2025/08/15



# 2025

## Reorganization and Compliance

as submitted for the Accountability Report by:

### **P200 - CLEMSON UNIVERSITY - PSA**

#### **Primary Contact**

First Name	Last Name	Role/Title	Email Address	Phone
Susan	Guynn	Director of Accountability, Evaluation, and Assessment	sguynn@clemson.edu	864-656-3013

#### **Secondary Contact**

First Name	Last Name	Role/Title	Email Address	Phone
Melissa	Kelley	Chief Financial Officer and Director of Business Office	melissk@clemson.edu	864-656-5273

#### **Agency Mission**

**Adopted  
in:**

**2014**

Clemson Public Service and Agriculture (PSA) is a state agency comprised of four units: Clemson Experiment Station, Clemson Cooperative Extension Service, Livestock and Poultry Health, and Regulatory Services. Clemson PSA safeguards the health and safety of livestock, poultry and companion animals and protects the food supply and public health of South Carolinians through its Livestock Poultry Health division, while PSA's Regulatory Services division ensures the safe, effective use of fertilizers and pesticides, and the quality of seeds and plants grown in the state and conducts programs that prevent agroterrorism. Clemson PSA works collaboratively with Clemson's College of Agriculture, Forestry and Life Sciences to conduct research and outreach through the Clemson Experiment Station and Clemson Cooperative Extension Service.

#### **Agency Vision**

**Adopted  
in:**

**2014**

To be acknowledged as the foremost provider of practical new discoveries, outreach and education, and technical assistance in the areas of agrisystems productivity and profitability, agribusiness, environmental and natural resources, food safety and nutrition, and 4-H youth development to enhance the quality of life for South Carolina's citizens.

#### **Recommendations for reorganization requiring legislative change:**

None

#### **Agency intentions for other major reorganization to divisions, departments, or programs to allow the agency to operate more effectively and efficiently in the succeeding fiscal year:**

None

#### **Significant events related to the agency that occurred in FY2025**



Description of Event	Start	End	Agency Measures Impacted	Other Impacts
No significant events affected performance measures.				
Is the agency in compliance with S.C. Code Ann. § 2-1-220, which requires submission of certain reports to the Legislative Services Agency for publication online and the State Library? (See also S.C. Code Ann. § 60-2-20).				Yes
Reason agency is out of compliance: (if applicable)				
Is the agency in compliance with various requirements to transfer its records, including electronic ones, to the Department of Archives and History? See the Public Records Act (S.C. Code Ann. § 30-1-10 through 30-1-180) and the South Carolina Uniform Electronic Transactions Act (S.C. Code Ann. § 26-6-10 through 26-10-210).				Yes
Does the law allow the agency to promulgate regulations?				Yes
Law number(s) which gives the agency the authority to promulgate regulations:	SC Code Sections 47-4-30; 47-6-30; 47-11-70; 47-11-150; 47-13-530; 47-13-810; 47-13-1230; 47-13-1315; 47-17-130; 47-19-170; 47-22-30; 46-7-10; 46-9-40; 46-10-30; 46-13-30; 46-21-625; 46-25-40; 46-26-30; 46-26-160; 46-37-20 and 59-119-50.			
Has the agency promulgated any regulations?				Yes
Is the agency in compliance with S.C. Code Ann. § 1-23-120 (J), which requires an agency to conduct a formal review of its regulations every five years?				Yes
(End of Reorganization and Compliance Section)				

FY2025

as submitted for the Accountability Report by:

P200 - CLEMSON UNIVERSITY - PSA

Strategic Plan Results

Goal 1

The Clemson Experiment Station aims to identify critical issues and find solutions through research that support South Carolina's agriculture and forest industries.

Goal 2

The Clemson Cooperative Extension Service will improve the economy, environment, and well-being of South Carolinians through the delivery of unbiased research-based information and education.

Goal 3

Clemson Livestock Poultry Health will ensure the continued health of the livestock and poultry industry, ensure safe, wholesome, properly labeled meat and poultry products, and protect the public health of the citizens of South Carolina.

Goal 4

Regulatory Services protects the citizens of South Carolina and the environment by implementing legislatively mandated regulatory programs and by providing other essential programs and services for agriculture and related sectors and for homeowners.

Perf. Measure Number	Description	Base	Target	Actual	Value Type	Desired Outcome	Time Applicable	Calculation Method	Data Source	Data Location	Stakeholder Need Satisfied	Primary Stakeholder	State Funded Program Number Responsible	Notes
1.1	Enhance research prominence in focus areas that maintain and support the growth of South Carolina's agriculture and forest industries.							State Objective: Education, Training, and Human Development						
1.1.1	The number of research proposals and funding requests submitted to granting agencies	451	250	454	Count	equal to or greater than	State Fiscal Year (July 1 - June 30).	Total number count	INFO-ED	Clemson Server	Individual grant submissions are typically defined by input from multiple sources of stakeholders.	Stakeholders providing input for external grant submissions include commodity groups (i.e. SC Soybean Board), producer organizations (i.e. Farm Bureau) and individual producers.	3004.000000.000	
1.1.2	The number of research proposal funded extramurally	193	150	196	Count	equal to or greater than	State Fiscal Year (July 1 - June 30).	Total number count	INFO-ED	Clemson Server	Basic research that identifies potential solutions to agricultural and forest industries challenges	Scientific community; Citizens of SC	3004.000000.000	
1.1.3	The number of technical contributions related to research	124	90	128	Count	equal to or greater than	State Fiscal Year (July 1 - June 30).	Total number count	Experiment Station Data	Clemson Server; Experiment Station Office	Results of research disseminated to the scientific community for continued investigation and the transfer of technology to agricultural and forest industries.	Scientific community; Citizens of SC	3004.000000.000	
1.2	Strengthen applied research through connections between Clemson University scientists and growers.							State Objective: Education, Training, and Human Development						
1.2.1	Research proposals that respond to the needs of commodity boards	45	60	55	Count	equal to or greater than	State Fiscal Year (July 1 - June 30).	Total number count	INFO-ED	Clemson Server	Crop specific commodity boards define research needs annually and calls for research proposals to address those needs.	Commodity boards are elected by South Carolina producers.	3004.000000.000	Continued reduction of sufficient calls from commodity boards due to lack of funding; therefore, we are not reaching our target with these entities.
1.3	Improve undergraduate and graduate education experiences offered at RECs.							State Objective: Education, Training, and Human Development						
1.3.1	Number of graduate students recruited and retained	410	150	427	Count	equal to or greater than	State Fiscal Year (July 1 - June 30).	Total number count	Office of Institutional Research	Clemson Server; Office of Institutional Research	Research results and practices to improve production and/or reduce costs and environmental impacts of agriculture and forestry production.	Ag/forestry producers and industry representatives located in the region of the Research and Education Centers.	3004.000000.000	

Perf. Measure Number	Description	Base	Target	Actual	Value Type	Desired Outcome	Time Applicable	Calculation Method	Data Source	Data Location	Stakeholder Need Satisfied	Primary Stakeholder	State Funded Program Number Responsible	Notes
<b>2.1 Develop and implement agricultural production systems that are economically sustainable and environmentally sound (Agrisystems Productivity and Profitability)</b>														
2.1.1	Number of acres in South Carolina impacted as a result of Extension programs.	0	300,000	1,066,955	Count	equal to or greater than	State fiscal year	# of acres impacted by Extension programs. The acreage may be impacted from improved practices, alternative crops planted, application of integrated crop management strategies and other land management strategies.	CUMIS	Clemson Extension Office	Education of producers and farmers to ensure economically sustainable and environmentally sound practices	Natural Resources	3504.000000.000	
2.1.2	Percentage of producers implementing new practices learned for livestock and forage production	0%	50%	52%	Percent	equal to or greater than	State Fiscal Year	# of producers that self-reported implementation of a livestock/forage production practice. This may include implementation of breeding practices, recommended grazing management systems, establishment of improved forage cultivars, etc.	Clemson University Management Information System (CUMIS)	Clemson Extension Office	Implementation of methods taught that ensure economically sustainable and environmentally sound practices	Producers and farmers	3504.000000.000	
<b>2.2 Agribusiness and Agricultural Workforce Development (Agribusiness)</b>														
2.2.1	Number of people served through workshops, one-on-one meetings, online resources and other media outlets.	79,383	200,000	324,319	Count	Equal to or greater than	State fiscal year	# people served through direct and indirect methods.	CUMIS and Salesforce	Clemson Extension Office	Education of agricultural business entities to maintain or expand operations or to further develop the ag workforce	Agricultural business entities	3504.000000.000	
2.2.2	Percentage of people reporting a gain in knowledge from workshops	92%	75%	84%	Percent	equal to or greater than	State Fiscal Year	# of people that reported a gain in knowledge as a result of the workshops.	Clemson University Management Information System (CUMIS)	Clemson Extension Office	Change in knowledge to further agricultural business entities	Agricultural business entities	3504.000000.000	
<b>2.3 Conserve and protect all natural resources throughout South Carolina through education and implementation of best management practices (Environmental and Natural Resources Conservation)</b>														
2.3.1	Percent of landowners, homeowners, land managers, biologists, engineers, water resources managers and private citizens utilizing practices taught during programs and workshops.	24%	50%	67%	Percent	equal to or greater than	State Fiscal Year	# of participants reporting that they implement knowledge divided by number of participants	Clemson University Management Information System (CUMIS)	Clemson Extension Office	Increase knowledge to protect and conserve natural resources	Landowners	3504.000000.000	
2.3.2	Number of acres owned/managed potentially impacted by forestry and wildlife workshops and programs and acres impacted by Master Naturalist programs	11,766	150,000	1,581,202.60	Count	Equal to or greater than	State fiscal year	# of acres reported by program attendees and volunteers	CUMIS and Master Naturalist Volunteers	Clemson Extension Office	On-the-ground conservation of natural resources	Natural Resources	3504.000000.000	

Perf. Measure Number	Description	Base	Target	Actual	Value Type	Desired Outcome	Time Applicable	Calculation Method	Data Source	Data Location	Stakeholder Need Satisfied	Primary Stakeholder	State Funded Program Number Responsible	Notes
2.4	Provide training on the safe preparation, production and handling of food while educating citizens on wise nutritional choices that leads to improved health (Food Safety and Nutrition)								State Objective: Education, Training, and Human Development					
2.4.1	Estimated savings from potentially preventing food-borne illnesses in restaurants.	\$417,690	\$250,000	\$384,540	Dollar amount	Equal to or greater than	State fiscal year	# establishments represented in programs teaching safe food preparation and handlings programs (from CUMIS) * \$6,630	CUMIS	Clemson Extension Office	Train restaurant and food workers in safe handling practices to protect food consumers from food-borne illnesses	Restaurants and food consumers	3504.000000.000	
2.4.2	Improve the quality of life for South Carolinians through increased physical and mental health in 5 rural counties.	0	4,000	0	Count	Equal to or greater than	State fiscal year	# people improving life and improved lifestyles through attendance at health and nutrition programs throughout SC	CUMIS	Clemson Extension Office	Improved quality of life through education on lifestyle and food habits	Rural county residents in SC	3504.000000.000	0 for this specific metrics. This measure is outdated wanting data from only 5 rural counties. Will include all counties for a total of 6655.
2.5	Empower youth to grow into healthy and productive members of society through hands-on, inclusive and mentored learning opportunities (Youth Development and Families)								State Objective: Education, Training, and Human Development					
2.5.1	Potential future volunteer contributions (in dollars) by current 4-H members (projected 15 years into the future).	\$36,396,142	\$20,000,000	\$69,563,826.00	Dollar amount	Equal to or greater than	Other	(# 4-H members * Volunteer Hourly rate) * (Avg # Volunteer Hours for 4-H by adults) projected forward 15 years with an inflation rate of 2.5%	ES-237	USDA-NIFA	Community residents benefit through learned sense of volunteer and service by participation in 4-H programs and the future value of the learned service	Community members throughout SC	3504.000000.000	
2.5.2	Percentage of 4-H members engaged in citizenship and community service programs.	11%	25%	14%	Percent	equal to or greater than	Other	Percentage of 4-H participants in citizenship programs divided by total 4-H participation	ES-237	USDA-NIFA	Community residents benefits from increased youth participation in community projects and leadership.	Community members throughout SC	3504.000000.000	We do not have a direct way to capture data related to this metric as the primary 4-H Program Area content drives most of the activity data and "citizenship and community service" programs are integrated throughout what we do in 4-H and are seldom stand-alone activities therefore we meet at 100%.
3.1	Enforce state and federal animal health laws and regulations by monitoring interstate movement of animals, performing inspections at livestock auction markets, and developing and expanding livestock traceability capability for livestock disease prevention, control, surveillance and eradication programs to protect animal and public health.								State Objective: Maintaining Safety, Integrity and Security					
3.1.1	Total number of new premises registered by Livestock Poultry Health	11,016	11,266	11,804	Count	Equal to or greater than	State Fiscal Year	Total premises registered	LPH reports	Clemson Livestock Poultry Health Office	Improves traceability of active livestock and poultry premises to help resolve animal disease outbreak events.	SC livestock and poultry producers.	2500.010000.000; 2501.050000.000	This is actually the total number of premises registered. We have changed the wording in the Strat Development tab so next year it provides an accurate description. This is more important than new premises in case of animal health emergency.
3.1.2	Meet disease testing and trace back requirements for continued "disease free" status as specified in the code of federal regulations	100%	100%	100%	Percent Complete	Complete	State Fiscal Year	Disease testing requirements met to maintain status	LPH reports	Clemson Livestock Poultry Health Office	Maintaining state disease-free status allows livestock and poultry producers to export products for national or international sales without (or with less) regulatory restrictions.	SC livestock and poultry producers.	2500.010000.000; 2501.050000.000	



Perf. Measure Number	Description	Base	Target	Actual	Value Type	Desired Outcome	Time Applicable	Calculation Method	Data Source	Data Location	Stakeholder Need Satisfied	Primary Stakeholder	State Funded Program Number Responsible	Notes
3.1.3	Number of inspections and investigations conducted at locations including livestock markets, exhibitions, sales, and on livestock farms throughout South Carolina	569	450	457	Count	Equal to or greater than	State fiscal year	Number of inspections, farm visits, and investigations	LPH Reports	Clemson Livestock Poultry Health Office	Maintaining state disease-free status allows livestock and poultry producers to export products for national or international sales without (or with less) regulatory restrictions.	SC livestock markets, and SC and interstate livestock producers.	2500.010000.000; 2501.050000.000	
3.2	<b>Protect the health of consumers by providing a comprehensive inspection service to ensure safe, properly labeled, wholesome meat and poultry products through inspections and regulation in state and federal cross-utilization meat and poultry plants.</b> <b>State Objective: Maintaining Safety, Integrity and Security</b>													
3.2.1	Operate under "at least equal to" status from USDA Food Safety Inspection Service (FSIS)	100%	100%	100%	Percent Complete	Complete	State Fiscal Year	On-site triennial review by FSIS and desk review each of the two years in between	FSIS designation	FSIS and Clemson Livestock Poultry Health Office	Required under the Federal Meat and the Federal Poultry Inspection Act to operate as state inspected facility.	Livestock and poultry slaughter and processing plants	2500.010000.000; 2501.050000.000	
3.2.2	Percent of state permitted fully inspected establishments with two in-depth reviews completed	100%	100%	100%	Percent	Equal to or greater than	State Fiscal Year	% permitted establishments with two in-depth reviews completed	SCMPID reports	SC livestock and poultry slaughter and processing plants and Clemson Livestock Poultry Health Office	Allows state inspected facilities to maintain "at least equal to" status required by the USDA FSIS.	Livestock and poultry slaughter and processing plants	2500.010000.000; 2501.050000.000	
3.2.3	Percent of inspections of meat and poultry plants and HACCP and SSOP records by inspector in charge	100%	100%	100%	Percent	Equal to or greater than	State Fiscal Year	% daily inspection of all slaughter meat and poultry plants and records, when operating. In-depth reviews of meat and poultry plants and HACCP and SSOP records by inspectors.	LPH inspection reports	USDA-PHIS	Required under the Federal Meat and the Federal Poultry Inspection Act to operate as state inspected facility.	Livestock and poultry slaughter and processing plants	2500.010000.000; 2501.050000.000	
3.3	<b>Provide accurate and timely veterinary diagnostic and surveillance testing for early detection of disease, thus improving response and mitigating economic losses in livestock and poultry industry sectors.</b> <b>State Objective: Maintaining Safety, Integrity and Security</b>													
3.3.1	Pass rate of National Veterinary Services Laboratories (NVSL) proficiency tests for procedures performed in Clemson Veterinary Diagnostic Center for which NVSL monitors test performance.	100%	100%	100%	Percent	Equal to or greater than	State Fiscal Year	Final pass rate of NVSL proficiency tests for procedures performed in Clemson Veterinary Diagnostic Center for which NVSL monitors test performance. Meet NVSL accreditation standards and criteria for technicians to be proficiency certified.	NVSL test results	NAHLN Portal and Clemson Livestock Poultry Health Office	Accurate results for samples submitted to laboratory diagnosing animal pathogens.	SC veterinarians, animal owners, and state and federal inspected livestock and poultry slaughter and processing plants, and the general public.	2500.010000.000; 2501.050000.000	
3.3.2	Maintain ISO 17025 accreditation for Clemson Veterinary Diagnostic Center	100%	100%	100%	Percent Complete	Complete	State Fiscal Year	ISO 17025:2005 Accredited	Accrediting bodies	Clemson Livestock Poultry Health Office	Maintaining quality of diagnostic testing.	SC veterinarians, animal owners, and state and federal inspected livestock and poultry slaughter and processing plants, and the general public.	2500.010000.000; 2501.050000.000	

Perf. Measure Number	Description	Base	Target	Actual	Value Type	Desired Outcome	Time Applicable	Calculation Method	Data Source	Data Location	Stakeholder Need Satisfied	Primary Stakeholder	State Funded Program Number Responsible	Notes
3.3.3	Number of diagnostic procedures performed.	91,959	80,000	96,161	Count	Equal to or greater than	State fiscal year	Total number of diagnostic procedures to accomplish mission and serve SC veterinarians and livestock and poultry producers.	LPH reports	Clemson Livestock Poultry Health Office	Diagnostic testing to detect animal and foodborne pathogens.	SC veterinarians, animal owners, and state and federal inspected livestock and poultry slaughter and processing plants, and the general public.	2500.010000.000; 2501.050000.000	
3.3.4	Percent of diagnostic procedures performed that are regulatory/production animal related	98%	90%	98%	Percent	equal to or greater than	State Fiscal Year	Percentage of diagnostic procedures that are regulatory/production animal related diagnostics directly related to primary mission serving SC veterinarians and livestock and poultry producers.	LPH reports	Clemson Livestock Poultry Health Office	Regulatory testing to detect animal and foodborne pathogens to protect the food supply and public health.	SC veterinarians, animal owners, and state and federal inspected livestock and poultry slaughter and processing plants, and the general public.	2500.010000.000; 2501.050000.000	
4.1	Ensure the safe use of pesticides to protect South Carolina's public health, natural resources and environment.										State Objective: Maintaining Safety, Integrity and Security			
4.1.1	Pesticide Regulation: Structural and Ornamental. Compliance rate category 7 licensed pesticide applicator	98%	60%	91%	Percent	equal to or greater than	State Fiscal Year	The structural compliance rate benchmark of 60% was exceeded. For the reporting period, the structural compliance rate was 96%.	Office Records	511 Westinghouse Road, Pendleton, SC 33670 and electronically	Pesticide safety for humans and environment	Homeowners, citizens of South Carolina	2000.010100.00; 2002.0500000.00	
4.1.2	Pesticide Regulation: General. Total number of pesticide applicators licensed in category 3	3,198	2,800	3,373	Count	Equal to or greater than	State fiscal year	The total number applicators possessing a valid license during the reporting period.	Office Records	511 Westinghouse Road, Pendleton, SC 33670 and electronically	Homeowners, citizens of South Carolina and pesticide applicators	Homeowners, citizens of South Carolina and pesticide applicators	2000.010100.00; 2002.0500000.00	
4.1.3	Pesticide Regulation: Percentage of district employees trained. General; Implement sustainable IPM programs in selected SC school districts	100%	100%	100%	Percent	Equal to or greater than	State Fiscal Year	Applicators contacted and trained to perform pest control activities at schools in 5 Districts inspected and in compliance with regulations	Office Records	511 Westinghouse Road, Pendleton, SC 33670 and electronically	Municipality and school protection	South Carolina School Districts, citizens of South Carolina, pesticide applicators	2000.010100.00; 2002.0500000.00	
4.2	Protect South Carolina's structures from termites and other structural pests by ensuring high standards are met for the pest.										State Objective: Maintaining Safety, Integrity and Security			
4.2.1	The number of compliance, complaints and other inspections conducted annually will be recorded and compared against an established benchmark of 2000 inspections. Regulate the structural and turf/ornamental pest control industries ensuring compliance with pesticide laws and regulations	2,369	2,000	2,527	Count	Equal to or greater than	State fiscal year	The total number of inspections	Office Records	511 Westinghouse Road, Pendleton, SC 33670 and electronically	Citizens of South Carolina, homeowners, and agriculture and business community	Citizens of South Carolina, homeowners, and agriculture and business community	2000.010100.00; 2002.0500000.00	

Perf. Measure Number	Description	Base	Target	Actual	Value Type	Desired Outcome	Time Applicable	Calculation Method	Data Source	Data Location	Stakeholder Need Satisfied	Primary Stakeholder	State Funded Program Number Responsible	Notes
4.2.2	The percentage of repeat violators (structural compliance)	<2%	20%		<2% Percent	equal to or less than	State Fiscal Year	Percentage of repeat violators	Office Records	511 Westinghouse Road, Pendleton, SC 33670 and electronically	Pesticide safety for humans and environment	Citizens of South Carolina, homeowners, and agriculture and business community	2002.0500000.00	
<b>4.3 Ensure that the fertilizer, lime, landplaster and soil amendments sold in South Carolina will be of high quality and properly labeled.</b> <b>State Objective: Maintaining Safety, Integrity and Security</b>														
4.3.1	The rate of fertilizer samples found deficient. Fertilizer, lime, and soil amendments distributed to end users in South Carolina must meet label guarantees and be free of contaminants	12%	20%		6% Percent	equal to or less than	State Fiscal Year	Percentage of fertilizer samples found deficient.	Annual Fertilizer Report	511 Westinghouse Road, Pendleton, SC 33670 and electronically	Protection of SC farmers and farming operations	Citizens of South Carolina, homeowners, and agriculture and business community	2000.010100.00	
<b>4.4 Protect South Carolina' agriculture and the environment from harmful or invasive plant disease, weed, and insect species.</b> <b>State Objective: Maintaining Safety, Integrity and Security</b>														
4.4.1	All nursery growers and dealers inspected and in compliance. Protect South Carolina's ecosystem and all levels of agricultural production by mitigating impact from plant pests, i.e., plant diseases, inspections etc.	100%	100%		100% Percent	equal to or greater than	State Fiscal Year	Percent of nursery grower and dealers inspected that were in compliance.	Office Records	511 Westinghouse Road, Pendleton, SC 33670 and electronically	Consumer protection	Citizens of South Carolina, homeowners, and agriculture and business community	2000.010100.00	
4.4.2	Acceptance rate of phytosanitary certificates issued	100%	100%		100% Percent	Equal to or greater than	State Fiscal Year	Percentage of acceptance of phytosanitary certificates.	Office Records	511 Westinghouse Road, Pendleton, SC 33670 and electronically	Consumer and environmental protection	Citizens of South Carolina, homeowners, and agriculture and business community	2000.010100.00	
4.4.3	Number of targeted surveys to detect potential invasive species introductions and regularly survey and treat currently infested sites with the goal of eradication. The fewer the number of surveys, the fewer the pests that are detected in SC.	15	11		15 Count	Equal to or greater than	State fiscal year	Number of targeted invasive species surveys.	Office Records	511 Westinghouse Road, Pendleton, SC 33670 and electronically	Homeowners, citizens of South Carolina	Homeowners, citizens of South Carolina	2000.010100.00	
<b>4.5 Established standards will be met for the production of certified seed.</b> <b>State Objective: Maintaining Safety, Integrity and Security</b>														
4.5.1	Percentage of seed lots inspected in the field that meet purity standards in laboratory tests. Seed is certified as true to variety and meets all official certification standards for quality and purity	99%	99.3%		99% Percent	equal to or greater than	State Fiscal Year	Percentage of seed lot field inspections that meet purity standards.	Office Records	511 Westinghouse Road, Pendleton, SC 33670 and electronically	SC farmers and agricultural protection	Citizens of South Carolina, homeowners, and agriculture and business community	2000.010100.00	
<b>4.6 Correctly identify or diagnose plant pests and diseases and provide effective control recommendations in a timely manner.</b> <b>State Objective: Maintaining Safety, Integrity and Security</b>														
4.6.1	Percentage of plant samples analyzed to identify or diagnose weed, disease, and insect problems, providing results and control recommendations to clients	100%	100%		100% Percent	Equal to or greater than	State Fiscal Year	Percentage of samples analyzed and recommendations made to clients	Plant Problem Clinic Annual Report	511 Westinghouse Road, Pendleton, SC 33670 and electronically	Consumer protection	Citizens of South Carolina, homeowners, agricultural businesses	2000.010100.00	
<b>4.7 Help prepare South Carolina to better recover from disasters and other emergencies impacting agriculture in the state.</b> <b>State Objective: Maintaining Safety, Integrity and Security</b>														

Perf. Measure Number	Description	Base	Target	Actual	Value Type	Desired Outcome	Time Applicable	Calculation Method	Data Source	Data Location	Stakeholder Need Satisfied	Primary Stakeholder	State Funded Program Number Responsible	Notes
4.7.1	Percentage of employees trained on the ICS (Incident Command System) in the event of an emergency. Have trainings to make sure that everybody understands their roles	100%	100%	100%	Percent	Equal to or greater than	State Fiscal Year	Percent of employees trained on the ICS (Incident Command System)	Office Records	511 Westinghouse Road, Pendleton, SC 33670 and electronically	Homeland security for SC Citizens	Citizens of South Carolina	2000.010100.00	
4.8 Enforce that established standards will be met for the production of certified organic products. State Objective: Maintaining Safety, Integrity and Security														
4.8.1	Percent of NOP accredited certification services to organic producers, processors, and handlers who seek certification through our agency provided to USDA.	100%	100%	100%	Percent	Equal to or greater than	State Fiscal Year	Percent of NOP accredited certification services provided to USDA.	Office Reports	511 Westinghouse Road, Pendleton, SC 33670 and electronically	Consumer and environmental protection	Citizens of South Carolina, homeowners, and agriculture and business community	2000.010100.00	
4.9 Provide for effective leadership, management and administration of Division programs, personnel and facilities. State Objective: Maintaining Safety, Integrity and Security														
4.9.1	Percent of analytical testing for soil, plant tissue, feed and forage, animal waste, irrigation water, and compost samples provided for individual clients, commercial dealers, Extension Agents, Extension Specialists, and researchers in South Carolina	100%	100%	100%	Percent	Equal to or greater than	State Fiscal Year	Percentage of analytical tests performed of samples provided.	Agriculture Service Lab Annual Report	171 Old Cherry Road, Clemson, SC 33634 and electronically	Consumer, environmental, and agricultural protection	Citizens of South Carolina, homeowners, and agriculture and business community, Clemson Extension Services	2000.010100.00	
4.9.2	Percentage of Apiary Inspections conducted	100%	88%	100%	Percent	equal to or greater than	State Fiscal Year	Percentage of apiaries inspected.	Office Reports	511 Westinghouse Road, Pendleton, SC 33670 and electronically	Consumer and environmental protection	Citizens of South Carolina, homeowners, and agriculture and business community	2000.010100.00	



FY2026

Strategic Plan Development

as submitted for the Accountability Report by:

P200 - CLEMSON UNIVERSITY - PSA

- Goal 1** The Clemson Experiment Station aims to identify critical issues and find solutions through research that support South Carolina's agriculture and forest industries.
- Goal 2** The Clemson Cooperative Extension Service will improve the economy, environment, and well-being of South Carolinians through the delivery of unbiased research-based information and education.
- Goal 3** Clemson Livestock Poultry Health will ensure the continued health of the livestock and poultry industry, ensure safe, wholesome, properly labeled meat and poultry products, and protect the public health of the citizens of South Carolina.
- Goal 4** Regulatory Services protects the citizens of South Carolina and the environment by implementing legislatively mandated regulatory programs and by providing other essential programs and services for agriculture and related sectors and for homeowners.

Perf. Measure Number	Description	Base	Target	Value Type	Desired Outcome	Time Applicable	Calculation Method	Data Source	Data Location	Stakeholder Need Satisfied	Primary Stakeholder	State Funded Program Number Responsible	Notes
1.1	Enhance research prominence in focus areas that maintain and support the growth of South Carolina’s agriculture and forest industries.								State Objective: Education, Training, and Human Development				
1.1.1	The number of research proposals and funding requests submitted to granting agencies	454	250	Count	equal to or greater than	State Fiscal Year (July 1 - June 30).	Total number count	INFO-ED	Clemson Server	Individual grant submissions are typically defined by input from multiple sources of stakeholders.	Stakeholders providing input for external grant submissions include commodity groups (i.e. SC Soybean Board), producer organizations (i.e. Farm Bureau) and individual producers.	3004.000000.000	
1.1.2	The number of research proposal funded extramurally	196	150	Count	equal to or greater than	State Fiscal Year (July 1 - June 30).	Total number count	INFO-ED	Clemson Server	Basic research that identifies potential solutions to agricultural and forest industries challenges	Scientific community; Citizens of SC	3004.000000.000	
1.1.3	The number of technical contributions related to research	128	90	Count	equal to or greater than	State Fiscal Year (July 1 - June 30).	Total number count	Experiment Station Data	Clemson Server; Experiment Station Office	Results of research disseminated to the scientific community for continued investigation and the transfer of technology to agricultural and forest industries.	Scientific community; Citizens of SC	3004.000000.000	
1.2	Strengthen applied research through connections between Clemson University scientists and growers.								State Objective: Education, Training, and Human Development				
1.2.1	Research proposals that respond to the needs of commodity boards	55	60	Count	equal to or greater than	State Fiscal Year (July 1 - June 30).	Total number count	INFO-ED	Clemson Server	Crop specific commodity boards define research needs annually and calls for research proposals to address those needs.	Commodity boards are elected by South Carolina producers.	3004.000000.000	
1.3	Improve undergraduate and graduate education experiences offered at RECs.								State Objective: Education, Training, and Human Development				

Perf. Measure Number	Description	Base	Target	Value Type	Desired Outcome	Time Applicable	Calculation Method	Data Source	Data Location	Stakeholder Need Satisfied	Primary Stakeholder	State Funded Program Number Responsible	Notes
1.3.1	Number of graduate students recruited and retained	427	150	Count	equal to or greater than	State Fiscal Year (July 1 - June 30).	Total number count	Office of Institutional Research	Clemson Server; Office of Institutional Research	Research results and practices to improve production and/or reduce costs and environmental impacts of agriculture and forestry production.	Ag/forestry producers and industry representatives located in the region of the Research and Education Centers.	3004.000000.000	
<b>2.1 Develop and implement agricultural production systems that are economically sustainable and environmentally sound (Agrisystems Productivity and Profitability)</b> <b>State Objective: Education, Training, and Human Development</b>													
2.1.1	Number of acres in South Carolina impacted as a result of Extension programs.	1,066,955	300,000	Count	equal to or greater than	State fiscal year	# of acres impacted by Extension programs. The acreage may be impacted from improved practices, alternative crops planted, application of integrated crop management strategies and other land management strategies.	Salesforce	Clemson Extension Office	Education of producers and farmers to ensure economically sustainable and environmentally sound practices	Natural Resources	3504.000000.000	
2.1.2	Percentage of producers implementing new practices learned for livestock and forage production	52%	50%	Percent	equal to or greater than	State Fiscal Year	# of producers that self-reported implementation of a livestock/forage production practice. This may include implementation of breeding practices, recommended grazing management systems, establishment of improved forage cultivars, etc.	Salesforce	Clemson Extension Office	Implementation of methods taught that ensure economically sustainable and environmentally sound practices	Producers and farmers	3504.000000.000	
<b>2.2 Agribusiness and Agricultural Workforce Development (Agribusiness)</b> <b>State Objective: Education, Training, and Human Development</b>													
2.2.1	Number of people served through workshops, one-on-one meetings, online resources and other media outlets.	324,319	200,000	Count	Equal to or greater than	State fiscal year	# people served through direct and indirect methods.	SalesForce	Clemson Extension Office	Education of agricultural business entities to maintain or expand operations or to further develop the ag workforce	Agricultural business entities	3504.000000.000	
2.2.2	Percentage of people reporting a gain in knowledge from workshops	84%	75%	Percent	equal to or greater than	State Fiscal Year	# of people that reported a gain in knowledge as a result of the workshops.	Salesforce	Clemson Extension Office	Change in knowledge to further agricultural business entities	Agricultural business entities	3504.000000.000	
<b>2.3 Conserve and protect all natural resources throughout South Carolina through education and implementation of best management practices (Environmental and Natural Resources Conservation)</b> <b>State Objective: Education, Training, and Human Development</b>													

Perf. Measure Number	Description	Base	Target	Value Type	Desired Outcome	Time Applicable	Calculation Method	Data Source	Data Location	Stakeholder Need Satisfied	Primary Stakeholder	State Funded Program Number Responsible	Notes
2.3.1	Percent of landowners, homeowners, land managers, biologists, engineers, water resources managers and private citizens utilizing practices taught during programs and workshops.	67%	50%	Percent	equal to or greater than	State Fiscal Year	# of participants reporting that they implement knowledge divided by number of participants	Salesforce	Clemson Extension Office	Increase knowledge to protect and conserve natural resources	Landowners	3504.000000.000	
2.3.2	Number of acres owned/managed potentially impacted by forestry and wildlife workshops and programs and acres impacted by Master Naturalist programs	1,581,202.60	150,000	Count	Equal to or greater than	State fiscal year	# of acres reported by program attendees and volunteers	Salesforce and Master Naturalist Volunteers	Clemson Extension Office	On-the-ground conservation of natural resources	Natural Resources	3504.000000.000	
<b>2.4 Provide training on the safe preparation, production and handling of food while educating citizens on wise nutritional choices that leads to improved health (Food Safety and Nutrition)</b> <b>State Objective: Education, Training, and Human Development</b>													
2.4.1	Estimated savings from potentially preventing food-borne illnesses in restaurants.	\$384,540	\$250,000	Dollar amount	Equal to or greater than	State fiscal year	# establishments represented in programs teaching safe food preparation and handlings programs (from Salesforce) * \$6,630	Salesforce	Clemson Extension Office	Train restaurant and food workers in safe handling practices to protect food consumers from food-borne illnesses	Restaurants and food consumers	3504.000000.000	
2.4.2	Improve the quality of life for South Carolinians through increased physical and mental health in counties.	6,655	5,000	Count	Equal to or greater than	State fiscal year	# people improving life and improved lifestyles through attendance at health and nutrition programs throughout SC	REDCap and Salesforce	Clemson Extension Office	Improved quality of life through education on lifestyle and food habits	residents in SC	3504.000000.000	
<b>2.5 Empower youth to grow into healthy and productive members of society through hands-on, inclusive and mentored learning opportunities (Youth Development and Families)</b> <b>State Objective: Education, Training, and Human Development</b>													
2.5.1	Potential future volunteer contributions (in dollars) by current 4-H members (projected 15 years into the future).	\$69,563,826	\$20,000,000	Dollar amount	Equal to or greater than	Other	(# 4-H member* Volunteer Hourly rate) * (Avg # Volunteer Hours for 4-H by adults) projected forward 15 years with an inflation rate of 2.5%	ES-237	USDA-NIFA	Community residents benefit through learned sense of volunteer and service by participation in 4-H programs and the future value of the learned service	Community members throughout SC	3504.000000.000	
2.5.2	Conduct a variety of youth development programs across all five 4-H Program Areas: Agriculture and Animals, Civic Engagement, Healthy Living, Natural Resources, and STEM.	14%	20%	Percent	equal to or greater than	Other	# of 4-H participants in five 4-H Program Areas: Agriculture and Animals, Civic Engagement, Healthy Living, Natural Resources, and STEM divided by total 4-H participation	ES-237	USDA-NIFA	Community residents benefits from increased youth participation in community projects and leadership.	Community members throughout SC	3504.000000.000	
<b>3.1 Enforce state and federal animal health laws and regulations by monitoring interstate movement of animals, performing inspections at livestock auction markets, and developing and expanding livestock traceability capability for livestock disease prevention, control, surveillance and eradication programs to protect animal and public health.</b> <b>State Objective: Maintaining Safety, Integrity and Security</b>													

Perf. Measure Number	Description	Base	Target	Value Type	Desired Outcome	Time Applicable	Calculation Method	Data Source	Data Location	Stakeholder Need Satisfied	Primary Stakeholder	State Funded Program Number Responsible	Notes
3.1.1	Total number of premises registered by Livestock Poultry Health	11,804	11,266	Count	Equal to or greater than	State Fiscal Year	Total premises registered	LPH reports	Clemson Livestock Poultry Health Office	Improves traceability of active livestock and poultry premises to help resolve animal disease outbreak events.	SC livestock and poultry producers.	2500.010000.000; 2501.050000.000	
3.1.2	Meet disease testing and trace back requirements for continued "disease free" status as specified in the code of federal regulations	100%	100%	Percent Complete	Complete	State Fiscal Year	Disease testing requirements met to maintain status	LPH reports	Clemson Livestock Poultry Health Office	Maintaining state disease-free status allows livestock and poultry producers to export products for national or international sales without (or with less) regulatory restrictions.	SC livestock and poultry producers.	2500.010000.000; 2501.050000.000	
3.1.3	Number of inspections and investigations conducted at locations including livestock markets, exhibitions, sales, and on livestock farms throughout South Carolina	457	450	Count	Equal to or greater than	State fiscal year	Number of inspections, farm visits, and investigations	LPH Reports	Clemson Livestock Poultry Health Office	Maintaining state disease-free status allows livestock and poultry producers to export products for national or international sales without (or with less) regulatory restrictions.	SC livestock markets, and SC and interstate livestock producers.	2500.010000.000; 2501.050000.000	
3.2	<b>Protect the health of consumers by providing a comprehensive inspection service to ensure safe, properly labeled, wholesome meat and poultry products through inspections and regulation in state and federal cross-utilization meat and poultry plants.</b> <b>State Objective: Maintaining Safety, Integrity and Security</b>												
3.2.1	Operate under "at least equal to" status from USDA Food Safety Inspection Service (FSIS)	100%	100%	Percent Complete	Complete	State Fiscal Year	On-site triennial review by FSIS and desk review each of the two years in between	FSIS designation	FSIS and Clemson Livestock Poultry Health Office	Required under the Federal Meat and the Federal Poultry Inspection Act to operate as state inspected facility.	Livestock and poultry slaughter and processing plants	2500.010000.000; 2501.050000.000	
3.2.2	Percent of state permitted fully inspected establishments with two in-depth reviews completed	100%	100%	Percent	Equal to or greater than	State Fiscal Year	% permitted establishments with two in-depth reviews completed	SCMPID reports	SC livestock and poultry slaughter and processing plants and Clemson Livestock Poultry Health Office	Allows state inspected facilities to maintain "at least equal to" status required by the USDA FSIS.	Livestock and poultry slaughter and processing plants	2500.010000.000; 2501.050000.000	
3.2.3	Percent of inspections of meat and poultry plants and HACCP and SSOP records by inspector in charge	100%	100%	Percent	Equal to or greater than	State Fiscal Year	% daily inspection of all slaughter meat and poultry plants and records, when operating. In-depth reviews of meat and poultry plants and HACCP and SSOP records by inspectors.	LPH inspection reports	USDA-PHIS	Required under the Federal Meat and the Federal Poultry Inspection Act to operate as state inspected facility.	Livestock and poultry slaughter and processing plants	2500.010000.000; 2501.050000.000	
3.3	<b>Provide accurate and timely veterinary diagnostic and surveillance testing for early detection of disease, thus improving response and mitigating economic losses in livestock and poultry industry sectors.</b> <b>State Objective: Maintaining Safety, Integrity and Security</b>												



Perf. Measure Number	Description	Base	Target	Value Type	Desired Outcome	Time Applicable	Calculation Method	Data Source	Data Location	Stakeholder Need Satisfied	Primary Stakeholder	State Funded Program Number Responsible	Notes
3.3.1	Pass rate of National Veterinary Services Laboratories (NVSL) proficiency tests for procedures performed in Clemson Veterinary Diagnostic Center for which NVSL monitors test performance.	100%	100%	Percent	Equal to or greater than	State Fiscal Year	Final pass rate of NVSL proficiency tests for procedures performed in Clemson Veterinary Diagnostic Center for which NVSL monitors test performance. Meet NVSL accreditation standards and criteria for technicians to be proficiency certified.	NVSL test results	NAHLN Portal and Clemson Livestock Poultry Health Office	Accurate results for samples submitted to laboratory diagnosing animal pathogens.	SC veterinarians, animal owners, and state and federal inspected livestock and poultry slaughter and processing plants, and the general public.	2500.010000.000; 2501.050000.000	
3.3.2	Maintain ISO 17025 accreditation for Clemson Veterinary Diagnostic Center	100%	100%	Percent Complete	Complete	State Fiscal Year	ISO 17025:2005 Accredited	Accrediting bodies	Clemson Livestock Poultry Health Office	Maintaining quality of diagnostic testing.	SC veterinarians, animal owners, and state and federal inspected livestock and poultry slaughter and processing plants, and the general public.	2500.010000.000; 2501.050000.000	
3.3.3	Number of diagnostic procedures performed.	96,161	80,000	Count	Equal to or greater than	State fiscal year	Total number of diagnostic procedures to accomplish mission and serve SC veterinarians and livestock and poultry producers.	LPH reports	Clemson Livestock Poultry Health Office	Diagnostic testing to detect animal and foodborne pathogens.	SC veterinarians, animal owners, and state and federal inspected livestock and poultry slaughter and processing plants, and the general public.	2500.010000.000; 2501.050000.000	
3.3.4	Percent of diagnostic procedures performed that are regulatory/production animal related	98%	90%	Percent	equal to or greater than	State Fiscal Year	Percentage of diagnostic procedures that are regulatory/production animal related diagnostics directly related to primary mission serving SC veterinarians and livestock and poultry producers.	LPH reports	Clemson Livestock Poultry Health Office	Regulatory testing to detect animal and foodborne pathogens to protect the food supply and public health.	SC veterinarians, animal owners, and state and federal inspected livestock and poultry slaughter and processing plants, and the general public.	2500.010000.000; 2501.050000.000	
4.1	Ensure the safe use of pesticides to protect South Carolina's public health, natural resources and environment.								State Objective: Maintaining Safety, Integrity and Security				
4.1.1	Pesticide Regulation: Structural and Ornamental. Compliance rate category 7 licensed pesticide applicator	91%	60%	Percent	equal to or greater than	State Fiscal Year	The structural compliance rate benchmark of 60% was exceeded. For the reporting period, the structural compliance rate was 96%.	Office Records	511 Westinghouse Road, Pendleton, SC 33670 and electronically	Pesticide safety for humans and environment	Homeowners, citizens of South Carolina	2000.010100.00; 2002.050000.00	

Perf. Measure Number	Description	Base	Target	Value Type	Desired Outcome	Time Applicable	Calculation Method	Data Source	Data Location	Stakeholder Need Satisfied	Primary Stakeholder	State Funded Program Number Responsible	Notes
4.1.2	Pesticide Regulation: General. Total number of pesticide applicators licensed in category 3	3,373	2,800	Count	Equal to or greater than	State fiscal year	The total number applicators possessing a valid license during the reporting period.	Office Records	511 Westinghouse Road, Pendleton, SC 33670 and electronically	Homeowners, citizens of South Carolina and pesticide applicators	Homeowners, citizens of South Carolina and pesticide applicators	2000.010100.00; 2002.0500000.00	
4.1.3	Pesticide Regulation: Percentage of district employees trained. General; Implement sustainable IPM programs in selected SC school districts	100%	100%	Percent	Equal to or greater than	State Fiscal Year	Applicators contacted and trained to perform pest control activities at schools in 5 Districts inspected and in compliance with regulations	Office Records	511 Westinghouse Road, Pendleton, SC 33670 and electronically	Municipality and school protection	South Carolina School Districts, citizens of South Carolina, pesticide applicators	2000.010100.00; 2002.0500000.00	
<b>4.2 Protect South Carolina's structures from termites and other structural pests by ensuring high standards are met for the pest.</b> <b>State Objective: Maintaining Safety, Integrity and Security</b>													
4.2.1	The number of compliance, complaints and other inspections conducted annually will be recorded and compared against an established benchmark of 2000 inspections. Regulate the structural and turf/ornamental pest control industries ensuring compliance with pesticide laws and regulations	2,527	2,000	Count	Equal to or greater than	State fiscal year	The total number of inspections	Office Records	511 Westinghouse Road, Pendleton, SC 33670 and electronically	Citizens of South Carolina, homeowners, and agriculture and business community	Citizens of South Carolina, homeowners, and agriculture and business community	2000.010100.00; 2002.0500000.00	
4.2.2	The percentage of repeat violators (structural compliance)	<2%	20%	Percent	equal to or less than	State Fiscal Year	Percentage of repeat violators	Office Records	511 Westinghouse Road, Pendleton, SC 33670 and electronically	Pesticide safety for humans and environment	Citizens of South Carolina, homeowners, and agriculture and business community	2002.0500000.00	
<b>4.3 Ensure that the fertilizer, lime, landplaster and soil amendments sold in South Carolina will be of high quality and properly labeled.</b> <b>State Objective: Maintaining Safety, Integrity and Security</b>													
4.3.1	The rate of fertilizer samples found deficient. Fertilizer, lime, and soil amendments distributed to end users in South Carolina must meet label guarantees and be free of contaminants	6%	20%	Percent	equal to or less than	State Fiscal Year	Percentage of fertilizer samples found deficient.	Annual Fertilizer Report	511 Westinghouse Road, Pendleton, SC 33670 and electronically	Protection of SC farmers and farming operations	Citizens of South Carolina, homeowners, and agriculture and business community	2000.010100.00	
<b>4.4 Protect South Carolina' agriculture and the environment from harmful or invasive plant disease, weed, and insect species.</b> <b>State Objective: Maintaining Safety, Integrity and Security</b>													

Perf. Measure Number	Description	Base	Target	Value Type	Desired Outcome	Time Applicable	Calculation Method	Data Source	Data Location	Stakeholder Need Satisfied	Primary Stakeholder	State Funded Program Number Responsible	Notes
4.4.1	All nursery growers and dealers inspected and in compliance. Protect South Carolina's ecosystem and all levels of agricultural production by mitigating impact from plant pests, i.e., plant diseases, inspections etc.	100%	100%	Percent	equal to or greater than	State Fiscal Year	Percent of nursery grower and dealers inspected that were in compliance.	Office Records	511 Westinghouse Road, Pendleton, SC 33670 and electronically	Consumer protection	Citizens of South Carolina, homeowners, and agriculture and business community	2000.010100.00	
4.4.2	Acceptance rate of phytosanitary certificates issued	100%	100%	Percent	Equal to or greater than	State Fiscal Year	Percentage of acceptance of phytosanitary certificates.	Office Records	511 Westinghouse Road, Pendleton, SC 33670 and electronically	Consumer and environmental protection	Citizens of South Carolina, homeowners, and agriculture and business community	2000.010100.00	
4.4.3	Number of targeted surveys to detect potential invasive species introductions and regularly survey and treat currently infested sites with the goal of eradication. The fewer the number of surveys, the fewer the pests that are detected in SC.	15	11	Count	Equal to or greater than	State fiscal year	Number of targeted invasive species surveys.	Office Records	511 Westinghouse Road, Pendleton, SC 33670 and electronically	Homeowners, citizens of South Carolina	Homeowners, citizens of South Carolina	2000.010100.00	
4.5	Established standards will be met for the production of certified seed.						State Objective: Maintaining Safety, Integrity and Security						
4.5.1	Percentage of seed lots inspected in the field that meet purity standards in laboratory tests. Seed is certified as true to variety and meets all official certification standards for quality and purity	99%	99%	Percent	equal to or greater than	State Fiscal Year	Percentage of seed lot field inspections that meet purity standards.	Office Records	511 Westinghouse Road, Pendleton, SC 33670 and electronically	SC farmers and agricultural protection	Citizens of South Carolina, homeowners, and agriculture and business community	2000.010100.00	
4.6	Correctly identify or diagnose plant pests and diseases and provide effective control recommendations in a timely manner.						State Objective: Maintaining Safety, Integrity and Security						
4.6.1	Percentage of plant samples analyzed to identify or diagnose weed, disease, and insect problems, providing results and control recommendations to clients	100%	100%	Percent	Equal to or greater than	State Fiscal Year	Percentage of samples analyzed and recommendations made to clients	Plant Problem Clinic Annual Report	511 Westinghouse Road, Pendleton, SC 33670 and electronically	Consumer protection	Citizens of South Carolina, homeowners, agricultural businesses	2000.010100.00	
4.7	Help prepare South Carolina to better recover from disasters and other emergencies impacting agriculture in the state.						State Objective: Maintaining Safety, Integrity and Security						

Perf. Measure Number	Description	Base	Target	Value Type	Desired Outcome	Time Applicable	Calculation Method	Data Source	Data Location	Stakeholder Need Satisfied	Primary Stakeholder	State Funded Program Number Responsible	Notes
4.7.1	Percentage of employees trained on the ICS (Incident Command System) in the event of an emergency. Have trainings to make sure that everybody understands their roles	100%	100%	Percent	Equal to or greater than	State Fiscal Year	Percent of employees trained on the ICS (Incident Command System)	Office Records	511 Westinghouse Road, Pendleton, SC 33670 and electronically	Homeland security for SC Citizens	Citizens of South Carolina	2000.010100.00	
<div>4.8</div> <div>Enforce that established standards will be met for the production of certified organic products.</div> <div>State Objective: Maintaining Safety, Integrity and Security</div>													
4.8.1	Percent of NOP accredited certification services to organic producers, processors, and handlers who seek certification through our agency provided to USDA.	100%	100%	Percent	Equal to or greater than	State Fiscal Year	Percent of NOP accredited certification services provided to USDA.	Office Reports	511 Westinghouse Road, Pendleton, SC 33670 and electronically	Consumer and environmental protection	Citizens of South Carolina, homeowners, and agriculture and business community	2000.010100.00	
<div>4.9</div> <div>Provide for effective leadership, management and administration of Division programs, personnel and facilities.</div> <div>State Objective: Maintaining Safety, Integrity and Security</div>													
4.9.1	Percent of analytical testing for soil, plant tissue, feed and forage, animal waste, irrigation water, and compost samples provided for individual clients, commercial dealers, Extension Agents, Extension Specialists, and researchers in South Carolina	100%	100%	Percent	Equal to or greater than	State Fiscal Year	Percentage of analytical tests performed of samples provided.	Agriculture Service Lab Annual Report	171 Old Cherry Road, Clemson, SC 33634 and electronically	Consumer, environmental, and agricultural protection	Citizens of South Carolina, homeowners, and agriculture and business community, Clemson Extension Services	2000.010100.00	
4.9.2	Percentage of Apiary Inspections conducted	100%	88%	Percent	equal to or greater than	State Fiscal Year	Percentage of apiaries inspected.	Office Reports	511 Westinghouse Road, Pendleton, SC 33670 and electronically	Consumer and environmental protection	Citizens of South Carolina, homeowners, and agriculture and business community	2000.010100.00	

2025

**Budget Data**

as submitted for the Accountability Report by:

**P200 - CLEMSON UNIVERSITY - PSA**

State Funded Program No.	State Funded Program Title	Description of State Funded Program	(Actual) General	(Actual) Other	(Actual) Federal	(Actual) Total	(Projected) General	(Projected) Other	(Projected) Federal	(Projected) Total
2000.010100.000	Regulatory & Pub Serv - General	Regulatory Services protect the state from exotic and invasive species, ensures that pesticides are used safely, regulates the structural pest control industry, verifies that fertilizer and lime meet standards and labeled guarantees, conducts programs for seed and organic certification, provides diagnosis of plant pests, and ensures readiness to respond to a catastrophic event impacting the state's agriculture.	\$ 1,942,656.00	\$ 3,709,003.00	\$ -	\$ 5,651,659.00	\$ 2,027,755.00	\$ 4,353,469.00	\$ -	\$ 6,381,224.00
2002.050000.000	Regulatory & Pub Serv - Restricted	Regulatory Services protect the state from exotic and invasive species, ensures that pesticides are used safely, regulates the structural pest control industry, verifies that fertilizer and lime meet standards and labeled guarantees, conducts programs for seed and organic certification, provides diagnosis of plant pests, and ensures readiness to respond to a catastrophic event impacting the state's agriculture.	\$ -	\$ -	\$ 5,805,825.00	\$ 5,805,825.00	\$ -	\$ -	\$ 5,928,429.00	\$ 5,928,429.00
2500.010000.000	Livestock - Poultry Hlth - Gen	The role of the Clemson Livestock Poultry Health (LPH) is to protect animal health through control of endemic, foreign, and emerging diseases in livestock and poultry and to protect the health of S. C. consumers by providing a comprehensive inspection service to ensure that meat and poultry products are safe, wholesome and accurately labeled.	\$ 4,700,015.00	\$ 98,930.00	\$ -	\$ 4,798,945.00	\$ 4,486,771.00	\$ 1,019,513.00	\$ -	\$ 5,506,284.00
2501.050000.000	Livestock - Poultry Hlth - Rest	The role of the Clemson Livestock Poultry Health (LPH) is to protect animal health through control of endemic, foreign, and emerging diseases in livestock and poultry and to protect the health of S. C. consumers by providing a comprehensive inspection service to ensure that meat and poultry products are safe, wholesome and accurately labeled.		\$ -	\$ 2,869,145.00	\$ 2,869,145.00	\$ -	\$ -	\$ 4,210,904.00	\$ 4,210,904.00
3004.000000.000	Agricultural Research	The role of Clemson's Experiment Station is to conduct research to develop relevant, science-based information that improves the state's economy by enhancing agriculture and forestry production, and natural resources management.	\$ 21,425,843.00	\$ 5,384,092.00	\$ 4,752,216.00	\$ 31,562,151.00	\$ 21,314,243.00	\$ 4,942,886.00	\$ 5,326,269.00	\$ 31,583,398.00



State Funded Program No.	State Funded Program Title	Description of State Funded Program	(Actual) General	(Actual) Other	(Actual) Federal	(Actual) Total	(Projected) General	(Projected) Other	(Projected) Federal	(Projected) Total
3504.000000.000	Cooperative Extension Service	The role of Clemson Extension is to transfer science-based information from the Experiment Station, Livestock-Poultry Health and Regulatory Services to commercial growers, livestock producers, land managers and individuals so that clientele can use the information to improve their well-being.	\$ 23,040,848.00	\$ 6,548,383.00	\$ 5,505,928.00	\$ 35,095,159.00	\$ 22,511,088.00	\$ 10,231,180.00	\$ 7,664,969.00	\$ 40,407,237.00
9500.050000.000	State Employer Contributions	Employer paid portion of benefits for state employees	\$ 16,090,354.00	\$ 2,475,657.00	\$ 3,479,251.00	\$ 22,045,262.00	\$ 18,959,858.00	\$ 2,848,520.00	\$ 4,244,609.00	\$ 26,052,987.00

# 2025

## Legal Data

as submitted for the Accountability Report by:

**P200 - CLEMSON UNIVERSITY - PSA**

Law number	Jurisdiction	Type	Description	Purpose the law serves:	Notes:	Changes made during FY2025
46-7-10	State	Statute	Clemson University shall have general powers and duties related to certain agricultural investigations, including the regulation and enforcement of livestock and poultry diseases, host statewide Extension meetings, etc.	Requires a service	Clemson University Duties and Powers in General	No Change
46-7-30, and 46-7-50 and 46-7-80 through 90	State	Statute	Provides for Clemson University to operate at least two experimental stations across the State to conduct farm demonstrations and research. Furthermore, Clemson to receive appropriations from Congress for operation of said experiment stations.	Requires a service	Enforcement of State Regulations	No Change
46-7-60 thru 90	State	Statute	Provides for Clemson to receive funding from Congress, as well as grants, while carrying out research and cooperative extension work.	Requires a service	Education to citizens of South Carolina	No Change
47-11-10 thru 170	State	Statute	Provides for the State veterinarian to oversee the permitting, inspection and operation of a public livestock market within the State.	Requires a service	State Animal Health Authority	No Change
47-13-10 et seq.	State	Statute	Provides for the State Veterinarian to carry out the day to day responsibilities of the Clemson BOT as it relates to the regulation of livestock and poultry health diseases. This includes the authority to establish quarantines, enact regulations focused on the control of certain livestock diseases, to prevent the sale of diseased livestock, to embargo livestock likely to pose a disease threat.	Requires a service	State Animal Health Authority	No Change

Law number	Jurisdiction	Type	Description	Purpose the law serves:	Notes:	Changes made during FY2025
47-17-10 et seq.	State	Statute	Provides for the Director of LPH to oversee and establish a livestock meat inspection program, including the oversight and inspection of the slaughter and preparation of meat products for intrastate sale. Clemson is also authorized to carry out certain responsibilities under the Federal Meat Inspection Act if requested/agreed to by Federal Government.	Requires a service	SC Meat Poultry Inspection	No Change
47-19-10 et seq.	State	Statute	Provides for Clemson PSA to be the designated state agency for cooperating with the US Secretary of Agriculture under the Federal Poultry Products Inspection Act. This includes the inspection of live poultry, carcasses and poultry products, as well as inspection of facilities for sanitary conditions and practices.	Requires a service	SC Meat Poultry Inspection	No Change
47-22-10 et seq.	State	Statute	Provides that LPH Director shall permit, inspect and otherwise regulate rendering plants in South Carolina, as well as vehicles used to transport raw materials.	Requires a service	State Animal Health Authority	No Change
47-6-10 et seq.	State	Statute	Provides that the State Livestock Poultry Health Commission and State Veterinarian shall regulate the control and eradication of pseudo rabies in SC.	Requires a service	State Animal Health Authority	No Change
§ 46-10-100	State	Statute	Penalties.	Requires a service		No Change
§ 46-10-110	State	Statute	Caution in use of pesticides or in eradication methods.	Requires a service		No Change
§ 46-10-120	State	Statute	Cotton producer referendum.	Requires a service		No Change

Law number	Jurisdiction	Type	Description	Purpose the law serves:	Notes:	Changes made during FY2025
§ 46-10-130	State	Statute	Assessments and penalties against cotton growers.	Requires a service		No Change
§ 46-10-20	State	Statute	Definitions.	Requires a service		No Change
§ 46-10-30	State	Statute	Administration of chapter; rules and regulations.	Requires a service		No Change
§ 46-10-40	State	Statute	Powers of commission.	Requires a service		No Change
§ 46-10-50	State	Statute	Quarantines; hearings and notice.	Requires a service		No Change
§ 46-10-60	State	Statute	Additional powers of commission.	Requires a service		No Change
§ 46-10-70	State	Statute	Inspections.	Requires a service		No Change
§ 46-10-80	State	Statute	Cooperation with federal and adjacent state agencies.	Requires a service		No Change
§ 46-10-85	State	Statute	Certification of cotton growers' organization; eligibility requirements; certifying resolution; revocation.	Requires a service		No Change
§ 46-10-90	State	Statute	Treatment or destruction of cotton.	Requires a service		No Change
§ 46-13-100	State	Statute	Financial responsibility required for commercial applicator's license.	Requires a service		No Change
§ 46-13-110	State	Statute	Reporting of accidents and incidents.	Requires a service		No Change
§ 46-13-120	State	Statute	Records as to use of restricted use pesticides.	Requires a service		No Change

Law number	Jurisdiction	Type	Description	Purpose the law serves:	Notes:	Changes made during FY2025
§ 46-13-130	State	Statute	Reciprocity.	Requires a service		No Change
§ 46-13-140	State	Statute	Exemptions from licensing requirements.	Requires a service		No Change
§ 46-13-150	State	Statute	Pesticide advisory committee.	Requires a service		No Change
§ 46-13-160	State	Statute	Information and courses of instruction.	Requires a service		No Change
§ 46-13-170	State	Statute	Inspection of premises; legal actions; "stop sale, use, or removal" orders.	Requires a service		No Change
§ 46-13-175	State	Statute	Discretion to make pesticides available for minor uses.	Requires a service		No Change
§ 46-13-180	State	Statute	Penalties.	Requires a service		No Change
§ 46-13-185	State	Statute	Prosecution of criminal violators; use of counsel.	Requires a service		No Change
§ 46-13-190	State	Statute	Subpoenas.	Requires a service		No Change
§ 46-13-20	State	Statute	Definitions.	Requires a service		No Change
§ 46-13-200	State	Statute	Adjudication of alleged violations; disposal of condemned pesticides or devices.	Requires a service		No Change
§ 46-13-210	State	Statute	Judicial review.	Requires a service		No Change
§ 46-13-220	State	Statute	Delegation of authority to employees of Clemson University.	Requires a service		No Change



Law number	Jurisdiction	Type	Description	Purpose the law serves:	Notes:	Changes made during FY2025
§ 46-13-230	State	Statute	Disposition of fees.	Requires a service		No Change
§ 46-13-240	State	Statute	Federal, interstate, and intrastate cooperation.	Requires a service		No Change
§ 46-13-30	State	Statute	Duties delegated to Director.	Requires a service		No Change
§ 46-13-40	State	Statute	Registration of pesticides and devices.	Requires a service		No Change
§ 46-13-45	State	Statute	Pesticide registration fees; classes of fees.	Requires a service		No Change
§ 46-13-50	State	Statute	Licensing of pesticide dealers.	Requires a service		No Change
§ 46-13-55	State	Statute	Regulation of structural pest control activity.	Requires a service		No Change
§ 46-13-60	State	Statute	Standards for certification of pesticide applicators; applicators' licenses.	Requires a service		No Change
§ 46-13-70	State	Statute	Classification of certified applicators' licenses.	Requires a service		No Change
§ 46-13-80	State	Statute	Expiration and renewal of licenses.	Requires a service		No Change
§ 46-13-90	State	Statute	Denial, suspension, revocation, or modification of licenses and certificates.	Requires a service		No Change
§ 46-21-665	State	Statute	Foundation seed program.	Requires a service		No Change
§ 46-23-20	State	Statute	Definitions.	Requires a service		No Change

Law number	Jurisdiction	Type	Description	Purpose the law serves:	Notes:	Changes made during FY2025
§ 46-23-30	State	Statute	Commission may prevent introduction and dissemination of noxious weeds in State; remedies of owner of property destroyed or disposed of; regulations.	Requires a service		No Change
§ 46-23-40	State	Statute	Quarantines.	Requires a service		No Change
§ 46-23-50	State	Statute	Commissioner may detect and prevent spread of noxious weeds.	Requires a service		No Change
§ 46-23-60	State	Statute	Inspections and seizures.	Requires a service		No Change
§ 46-23-70	State	Statute	Cooperation with other governments and agencies.	Requires a service		No Change
§ 46-23-80	State	Statute	Penalty.	Requires a service		No Change
§ 46-23-90	State	Statute	Delegation of duties to director.	Requires a service		No Change
§ 46-25-1010	State	Statute	Penalties for plant nutrient deficiencies and other acts; appeals; distribution of penalty sums to consumers.	Requires a service		No Change
§ 46-25-1060	State	Statute	Determination and publication of commercial values to use in assessing penalties.	Requires a service		No Change
§ 46-25-1080	State	Statute	Penalty for shortage in weight.	Requires a service		No Change
§ 46-25-1090	State	Statute	Forfeiture for selling, transporting, or receiving improperly branded, tagged, or misbranded fertilizer.	Requires a service		No Change
§ 46-25-1100	State	Statute	Actions by State to recover fines and penalties; liens.	Requires a service		No Change
§ 46-25-1110	State	Statute	Seller deemed agent for service of process on out-of-state manufacturer.	Requires a service		No Change

Law number	Jurisdiction	Type	Description	Purpose the law serves:	Notes:	Changes made during FY2025
§ 46-25-1120	State	Statute	Analysis of fertilizer ordered sold.	Requires a service		No Change
§ 46-25-1130	State	Statute	Remission of certain penalties.	Requires a service		No Change
§ 46-25-1140	State	Statute	"Stop sale, use, or removal" orders.	Requires a service		No Change
§ 46-25-1150	State	Statute	Distribution of adulterated fertilizer prohibited.	Requires a service		No Change
§ 46-25-1160	State	Statute	Use of regulated materials not meeting requirements prohibited; penalties.	Requires a service		No Change
§ 46-25-1170	State	Statute	Civil penalty in addition to other penalties.	Requires a service		No Change
§ 46-25-20	State	Statute	Definitions.	Requires a service		No Change
§ 46-25-210	State	Statute	Registration of fertilizer; application; fee.	Requires a service		No Change
§ 46-25-240	State	Statute	When registration and sale may be prohibited.	Requires a service		No Change
§ 46-25-250	State	Statute	Revocation or refusal of registration for fraud.	Requires a service		No Change
§ 46-25-260	State	Statute	Exclusive use of brand name or trademark.	Requires a service		No Change
§ 46-25-30	State	Statute	Guaranteed analysis of certain plant nutrients.	Requires a service		No Change
§ 46-25-40	State	Statute	Rules and regulations.	Requires a service		No Change

Law number	Jurisdiction	Type	Description	Purpose the law serves:	Notes:	Changes made during FY2025
§ 46-25-410	State	Statute	Information required on containers or with bulk shipments.	Requires a service		No Change
§ 46-25-45	State	Statute	Commission to delegate duties to director; director to administer and enforce chapter and promulgate regulations.	Requires a service		No Change
§ 46-25-50	State	Statute	Sales between and to importers, registrants, and manipulators.	Requires a service		No Change
§ 46-25-510	State	Statute	Sale or distribution of certain superphosphate prohibited.	Requires a service		No Change
§ 46-25-520	State	Statute	Regulations concerning minimum standards for certain fertilizer material.	Requires a service		No Change
§ 46-25-540	State	Statute	Filler.	Requires a service		No Change
§ 46-25-570	State	Statute	Wet or bad mechanical condition.	Requires a service		No Change
§ 46-25-60	State	Statute	Relief from liability of registrant for distributor's alteration of content or labeling of fertilizer.	Requires a service		No Change
§ 46-25-70	State	Statute	Misbranding.	Requires a service		No Change
§ 46-25-710	State	Statute	Analyses of official samples; inspectors, chemists and other personnel; reports.	Requires a service		No Change
§ 46-25-720	State	Statute	Entering premises; inspecting and sampling.	Requires a service		No Change
§ 46-25-75	State	Statute	Certain information to be published.	Requires a service		No Change
§ 46-25-80	State	Statute	Penalties for violations of chapter.	Requires a service		No Change

Law number	Jurisdiction	Type	Description	Purpose the law serves:	Notes:	Changes made during FY2025
§ 46-25-810	State	Statute	Inspection tax and tonnage reports; collection fee.	Requires a service		No Change
§ 46-25-815	State	Statute	Fertilizer inspection fee.	Requires a service		No Change
§ 46-25-820	State	Statute	Annual registration fee and inspection tax on packages containing ten pounds or less.	Requires a service		No Change
§ 46-25-825	State	Statute	Registration of separately identified products.	Requires a service		No Change
§ 46-25-830	State	Statute	Reports of sales to nonregistrants.	Requires a service		No Change
§ 46-25-840	State	Statute	Financial statement or bond; records.	Requires a service		No Change
§ 46-25-850	State	Statute	Examination of registrant's records.	Requires a service		No Change
§ 46-25-860	State	Statute	Information confidential.	Requires a service		No Change
§ 46-25-870	State	Statute	Exemptions.	Requires a service		No Change
§ 46-35-15	State	Statute	Definitions.	Requires a service		No Change
§ 46-35-20	State	Statute	Petition for removal or destruction of trees.	Requires a service		No Change
§ 46-35-30	State	Statute	Citation to show cause against removal or destruction.	Requires a service		No Change
§ 46-35-40	State	Statute	Service of citation.	Requires a service		No Change



Law number	Jurisdiction	Type	Description	Purpose the law serves:	Notes:	Changes made during FY2025
§ 46-35-50	State	Statute	Order for removal or destruction of trees; service.	Requires a service		No Change
§ 46-35-60	State	Statute	Destruction or removal of trees when owner fails to do so.	Requires a service		No Change
§ 46-35-70	State	Statute	Enforcement.	Requires a service		No Change
§ 46-35-80	State	Statute	Disclosure requirements relative to sale of orchards.	Requires a service		No Change
§ 46-37-20	State	Statute	Powers of Commission; rules and regulations.	Requires a service		No Change
§ 46-37-25	State	Statute	Commission to delegate duties to director; authority of director.	Requires a service		No Change
§ 46-37-30	State	Statute	Inspection; removal or destruction of bees, beekeeping fixtures and appliances.	Requires a service		No Change
§ 46-37-40	State	Statute	Introduction of used fixtures regulated.	Requires a service		No Change
§ 46-37-50	State	Statute	Penalty.	Requires a service		No Change
§ 46-7-100	State	Statute	Reporting animal diseases caused by chemical or other terrorism	Requires a service		No Change
§ 46-7-110	State	Statute	Animal waste management training and certification programs.	Requires a service	Education of owners and operators of animal facility	No Change
§ 46-7-50	State	Statute	Assent to act of Congress for appropriations for experiment stations (1962)	Funding agency deliverable(s)	Experiment Station funding	No Change
§ 46-7-70	State	Statute	Receipt and use of grants under act to further development of extension work.	Funding agency deliverable(s)	Cooperative Extension Service Funding	No Change

Law number	Jurisdiction	Type	Description	Purpose the law serves:	Notes:	Changes made during FY2025
§ 46-7-80	State	Statute	Assent to act of Congress providing for research and cooperative extension work (1962)	Funding agency deliverable(s)	Experiment Station and Extension funding	No Change
§ 46-7-90	State	Statute	Receipt and use of grants under act providing for research and cooperative extension work (1962)	Funding agency deliverable(s)	Experiment Station and Extension funding	No Change
§ 46-9-100	State	Statute	Fines deposited to credit of State Treasury.	Requires a service		No Change
§ 46-9-110	State	Statute	Local ordinances void.	Requires a service		No Change
§ 46-9-120	State	Statute	Reporting of agricultural product diseases caused by chemical or other terrorism.	Requires a service		No Change
§ 46-9-15	State	Statute	Definitions	Requires a service		No Change
§ 46-9-20	State	Statute	Appointment of State Entomologist and State Plant Pathologist.	Requires a service		No Change
§ 46-9-30	State	Statute	Confidentiality of business information; penalties for unlawful disclosure or use of information.	Requires a service		No Change
§ 46-9-35	State	Statute	Confidentiality of business information; penalties for unlawful disclosure or use of information.	Requires a service		No Change
§ 46-9-40	State	Statute	Authority to promulgate and enforce regulations; other powers of commission.	Requires a service		No Change
§ 46-9-50	State	Statute	Delegation of duties of commission to director; powers and duties of director.	Requires a service		No Change
§ 46-9-60	State	Statute	Powers and duties of commission upon finding or suspecting infestation; quarantines; effect of quarantines.	Requires a service		No Change
§ 46-9-70	State	Statute	Police powers of commission, assistants, deputies, and agents; violations reported to commission.	Requires a service		No Change

Law number	Jurisdiction	Type	Description	Purpose the law serves:	Notes:	Changes made during FY2025
§ 46-9-80	State	Statute	Penalties for interfering with commission, director, deputies, assistants, or agents.	Requires a service		No Change
§ 46-9-90	State	Statute	Penalties for violating chapter; denial, suspension, revocation, or modification of license or certificate; civil penalties; hearing on suspension; judicial appeal not to act as stay of penalty; authority of commission to enforce its ordinances and regulations in court.	Requires a service		No Change
§ 47-11-100	State	Statute	Tuberculosis and paratuberculosis tests required for all animals except those for immediate slaughter.	Requires a service		No Change
§ 47-11-110	State	Statute	Establishment of slaughter assembly points.	Requires a service		No Change
§ 47-11-120	State	Statute	Liability of person removing livestock for slaughter.	Requires a service		No Change
§ 47-11-130	State	Statute	Infected or exposed animals or poultry.	Requires a service		No Change
§ 47-11-140	State	Statute	Services of veterinarians provided for auctions; cost of tests.	Requires a service		No Change
§ 47-11-150	State	Statute	Promulgation and enforcement of regulations.	Requires a service		No Change
§ 47-11-160	State	Statute	Enforcement.	Requires a service		No Change
§ 47-11-170	State	Statute	Violations.	Requires a service		No Change
§ 47-11-20	State	Statute	Permits; fees; operation without a permit is a misdemeanor.	Requires a service		No Change
§ 47-11-30	State	Statute	Application for permit; approval of changes in operating and ownership.	Requires a service		No Change

Law number	Jurisdiction	Type	Description	Purpose the law serves:	Notes:	Changes made during FY2025
§ 47-11-60	State	Statute	Bond.	Requires a service		No Change
§ 47-11-70	State	Statute	Facilities regulations; inspections; penalties.	Requires a service		No Change
§ 47-11-80	State	Statute	Records; identification required of persons selling at market; livestock haulers exempt from licenses.	Requires a service		No Change
§ 47-11-85	State	Statute	Identification of animals sold in public livestock market or equine sales facility.	Requires a service		No Change
§ 47-11-90	State	Statute	Brucellosis testing.	Requires a service		No Change
§ 47-13-110	State	Statute	Sale of biological products containing living disease-producing agent.	Requires a service		No Change
§ 47-13-1210	State	Statute	Definitions.	Requires a service		No Change
§ 47-13-1220	State	Statute	Authority and functions of commission.	Requires a service		No Change
§ 47-13-1230	State	Statute	Promulgation of regulations by commission; poultry advisory committee.	Requires a service		No Change
§ 47-13-1240	State	Statute	Penalties.	Requires a service		No Change
§ 47-13-130	State	Statute	Appropriation of funds in event of outbreak of diseases in animals and poultry.	Requires a service		No Change
§ 47-13-1310	State	Statute	Definitions.	Requires a service		No Change
§ 47-13-1315	State	Statute	State veterinarian and Livestock-Poultry Service to develop and institute programs for control of equine infectious anemia.	Requires a service		No Change

Law number	Jurisdiction	Type	Description	Purpose the law serves:	Notes:	Changes made during FY2025
§ 47-13-1330	State	Statute	Official tests.	Requires a service		No Change
§ 47-13-1340	State	Statute	Reporting of tests.	Requires a service		No Change
§ 47-13-1350	State	Statute	Unlawful for horse to enter State unless tested; rules and regulations.	Requires a service		No Change
§ 47-13-1360	State	Statute	Quarantine of exposed horses.	Requires a service		No Change
§ 47-13-1365	State	Statute	Disposition of animal after second confirmatory test.	Requires a service		No Change
§ 47-13-1370	State	Statute	Proof of tests required for public assembly of horses.	Requires a service		No Change
§ 47-13-1380	State	Statute	Preventive measures for race tracks, horse shows, rodeos, horse owners, and veterinarians.	Requires a service		No Change
§ 47-13-1390	State	Statute	False certificates unlawful; penalties.	Requires a service		No Change
§ 47-13-1400	State	Statute	Additional penalties for violation of article.	Requires a service		No Change
§ 47-13-150	State	Statute	Quarantine against importing slaughtered meat or poultry from disease-affected areas.	Requires a service		No Change
§ 47-13-20	State	Statute	Powers and duties of commission.	Requires a service		No Change
§ 47-13-30	State	Statute	Penalties for violations of chapter.	Requires a service		No Change
§ 47-13-310	State	Statute	Notice to disinfect; violation is a misdemeanor.	Requires a service		No Change



Law number	Jurisdiction	Type	Description	Purpose the law serves:	Notes:	Changes made during FY2025
§ 47-13-320	State	Statute	Orders to disinfect animals exposed to cattle fever tick.	Requires a service		No Change
§ 47-13-340	State	Statute	Venue of prosecutions under Section 47-13-310.	Requires a service		No Change
§ 47-13-360	State	Statute	Indemnity payments for killing of certain animals.	Funding agency deliverable(s)		No Change
§ 47-13-370	State	Statute	Blank forms used to certify test results.	Requires a service		No Change
§ 47-13-380	State	Statute	Appointment of appraisers of animals to be killed.	Requires a service		No Change
§ 47-13-390	State	Statute	Procedure in event prescribed appraisal method is unsatisfactory to owner.	Requires a service		No Change
§ 47-13-400	State	Statute	Form and payment of appraisements.	Funding agency deliverable(s)		No Change
§ 47-13-410	State	Statute	Procedure when animal killed because exposed to contagion or infection.	Requires a service		No Change
§ 47-13-420	State	Statute	Expenses of appraisal.	Requires a service		No Change
§ 47-13-430	State	Statute	Indemnity for animals condemned for foot and mouth disease, vesicular exanthema, or rinderpest.	Funding agency deliverable(s)		No Change
§ 47-13-510	State	Statute	"Brucellosis" defined; declaring animal infected.	Requires a service		No Change
§ 47-13-520	State	Statute	"Approved accredited veterinarian" defined.	Requires a service		No Change
§ 47-13-530	State	Statute	Conduct of control.	Requires a service		No Change

Law number	Jurisdiction	Type	Description	Purpose the law serves:	Notes:	Changes made during FY2025
§ 47-13-540	State	Statute	Exposed or suspected animals subject to quarantine.	Requires a service		No Change
§ 47-13-550	State	Statute	Vaccination.	Requires a service		No Change
§ 47-13-560	State	Statute	Tattooing or branding of vaccinated animals.	Requires a service		No Change
§ 47-13-570	State	Statute	Sale of vaccine.	Requires a service		No Change
§ 47-13-580	State	Statute	Sale of cattle generally.	Requires a service		No Change
§ 47-13-590	State	Statute	Sale of infected animals.	Requires a service		No Change
§ 47-13-60	State	Statute	Sale of diseased livestock or fowl unlawful.	Requires a service		No Change
§ 47-13-600	State	Statute	Liability for sale of infected animal except for slaughter.	Requires a service		No Change
§ 47-13-610	State	Statute	Veterinarian shall require testing of suspected animals.	Requires a service		No Change
§ 47-13-620	State	Statute	Compulsory tests of cattle.	Funding agency deliverable(s)		No Change
§ 47-13-630	State	Statute	Blood samples to be drawn by veterinarian.	Requires a service		No Change
§ 47-13-640	State	Statute	Report and branding of infected animals.	Requires a service		No Change
§ 47-13-650	State	Statute	Cooperation with United States Department of Agriculture; inspectors.	Requires a service		No Change

Law number	Jurisdiction	Type	Description	Purpose the law serves:	Notes:	Changes made during FY2025
§ 47-13-660	State	Statute	Reports.	Requires a service		No Change
§ 47-13-670	State	Statute	Enforcement of rules and regulations.	Requires a service		No Change
§ 47-13-680	State	Statute	Violations.	Requires a service		No Change
§ 47-13-690	State	Statute	Cooperation of State with federal government in paying indemnity for infected cattle.	Funding agency deliverable(s)		No Change
§ 47-13-810	State	Statute	Tuberculosis and paratuberculosis declared contagious and infectious; animals subject to quarantine.	Requires a service		No Change
§ 47-13-820	State	Statute	Tuberculin and paratuberculin tests; observation.	Requires a service		No Change
§ 47-13-830	State	Statute	Quarantine of herds in which reactors are found.	Requires a service		No Change
§ 47-13-840	State	Statute	Branding and slaughtering of reacting animals; disinfecting quarters and equipment.	Requires a service		No Change
§ 47-13-850	State	Statute	Liability for disposing of affected animal except for immediate slaughter.	Requires a service		No Change
§ 47-13-860	State	Statute	Official tests.	Requires a service		No Change
§ 47-13-870	State	Statute	Inspectors; accepting assistance from United States Government.	Requires a service		No Change
§ 47-13-880	State	Statute	Violations.	Requires a service		No Change
§ 47-17-100	State	Statute	Violations.	Requires a service		No Change

Law number	Jurisdiction	Type	Description	Purpose the law serves:	Notes:	Changes made during FY2025
§ 47-17-120	State	Statute	Permit required; fee; application; refusal, revocation, or suspension.	Requires a service		No Change
§ 47-17-130	State	Statute	Rules and regulations.	Requires a service		No Change
§ 47-17-140	State	Statute	Article inapplicable to transactions regulated under Federal Meat Inspection Act; cooperation with Federal, state, and local agencies; inadequate personnel.	Requires a service		No Change
§ 47-17-150	State	Statute	Cost of inspection.	Requires a service		No Change
§ 47-17-20	State	Statute	Definitions.	Requires a service		No Change
§ 47-17-30	State	Statute	Antemortem and postmortem inspections; quarantine, segregation, and reinspection; condemnation of unwholesome livestock and meat.	Requires a service		No Change
§ 47-17-310	State	Statute	Unlawful importation of foreign meat containing communicable diseases.	Requires a service		No Change
§ 47-17-320	State	Statute	Enforcement; confiscation and destruction of meat.	Requires a service		No Change
§ 47-17-40	State	Statute	Sanitary conditions and practices required in slaughtering and processing establishments.	Requires a service		No Change
§ 47-17-50	State	Statute	Official inspection marks and other information on or accompanying containers and carcasses.	Requires a service		No Change
§ 47-17-60	State	Statute	Prohibited acts.	Requires a service		No Change
§ 47-17-70	State	Statute	Slaughtering or processing except in compliance with article prohibited.	Requires a service		No Change

Law number	Jurisdiction	Type	Description	Purpose the law serves:	Notes:	Changes made during FY2025
§ 47-17-80	State	Statute	Records.	Requires a service		No Change
§ 47-17-90	State	Statute	Exemptions from provisions requiring inspection by Director.	Requires a service		No Change
§ 47-19-100	State	Statute	Persons required to keep records.	Requires a service		No Change
§ 47-19-110	State	Statute	Registration with director required of persons engaged in poultry related businesses.	Requires a service		No Change
§ 47-19-120	State	Statute	Violations; interference with person performing official duties under chapter.	Requires a service		No Change
§ 47-19-130	State	Statute	Notice of violations and opportunity to be heard.	Requires a service		No Change
§ 47-19-140	State	Statute	Exemptions.	Requires a service		No Change
§ 47-19-150	State	Statute	Limiting entry of poultry products into inspected establishments.	Requires a service		No Change
§ 47-19-165	State	Statute	Application of chapter to pigeons.	Requires a service		No Change
§ 47-19-170	State	Statute	Rules and regulations.	Requires a service		No Change
§ 47-19-180	State	Statute	Costs of inspection.	Requires a service		No Change
§ 47-19-20	State	Statute	Definitions	Requires a service		No Change
§ 47-19-25	State	Statute	Voluntary inspection programs for certain birds by the Livestock-Poultry Health Commission.	Requires a service		No Change



Law number	Jurisdiction	Type	Description	Purpose the law serves:	Notes:	Changes made during FY2025
§ 47-19-30	State	Statute	Designation of state agency for cooperating with Secretary of Agriculture under Federal Poultry Products Inspection Act.	Requires a service		No Change
§ 47-19-35	State	Statute	Permits for slaughtering and packaging poultry; fees.	Requires a service		No Change
§ 47-19-40	State	Statute	Inspection of live poultry, carcasses and poultry products; quarantine, segregation and reinspection; condemnation and destruction or reprocessing of adulterated carcasses.	Requires a service		No Change
§ 47-19-50	State	Statute	Sanitary conditions and practices required in slaughtering and processing establishments.	Requires a service		No Change
§ 47-19-60	State	Statute	Information required on containers and carcasses; styles and sizes of type; definitions and standards; false or misleading marking or labeling.	Requires a service		No Change
§ 47-19-70	State	Statute	Prohibited acts.	Requires a service		No Change
§ 47-19-80	State	Statute	Processing except in compliance with chapter is prohibited.	Requires a service		No Change
§ 47-19-90	State	Statute	Poultry and poultry products not intended for use as human food need not be inspected.	Requires a service		No Change
§ 47-22-20	State	Statute	Definitions	Requires a service		No Change
§ 47-22-30	State	Statute	Duties of commission and director	Requires a service		No Change
§ 47-22-40	State	Statute	Permit required for operation of transfer center and rendering processes.	Requires a service		No Change
§ 47-22-50	State	Statute	Permit applications; information required; permit valid until revoked, relinquished, or abandoned.	Requires a service		No Change

Law number	Jurisdiction	Type	Description	Purpose the law serves:	Notes:	Changes made during FY2025
§ 47-22-60	State	Statute	Location and equipment requirements for transfer centers, rendering plants, and vehicles used to transfer raw materials.	Requires a service		No Change
§ 47-22-70	State	Statute	Inspections; hours; information required to be available	Requires a service		No Change
§ 47-22-80	State	Statute	Violations; penalties.	Requires a service		No Change
§ 47-4-100	State	Statute	Penalty for illegal transportation of livestock or poultry; civil liability.	Requires a service		No Change
§ 47-4-110	State	Statute	Police power of commission members and agents; livestock law enforcement officers; employment, removal, duties; bond.	Requires a service		No Change
§ 47-4-120	State	Statute	Inhibition of livestock inspection; penalty.	Requires a service		No Change
§ 47-4-130	State	Statute	Violation of provision of Title 47 is a misdemeanor; penalties; enforcement of commission regulations in court.	Requires a service		No Change
§ 47-4-140	State	Statute	Disposition of fines and fees.	Requires a service		No Change
§ 47-4-150	State	Statute	Advisory committees.	Requires a service		No Change
§ 47-4-170	State	Statute	Confidential information; exemptions.	Requires a service		No Change
§ 47-4-20	State	Statute	Definitions.	Requires a service		No Change
§ 47-4-30	State	Statute	Promulgation and enforcement of rules and regulations; permitted operations.	Requires a service		No Change

Law number	Jurisdiction	Type	Description	Purpose the law serves:	Notes:	Changes made during FY2025
§ 47-4-40	State	Statute	Delegation of duties to director.	Requires a service		No Change
§ 47-4-50	State	Statute	Promulgation of regulations listing diseases; reporting suspected existence of disease.	Requires a service		No Change
§ 47-4-60	State	Statute	Certificate of veterinary inspection; requirement for out-of-state livestock or poultry; quarantine of uncertified animals; exceptions.	Requires a service		No Change
§ 47-4-70	State	Statute	Quarantine of livestock or poultry; violation; penalty; segregation of animals; liens; abandoned animals.	Requires a service		No Change
§ 47-4-80	State	Statute	Condemned and destroyed livestock or poultry; indemnification of owner.	Funding agency deliverable(s)		No Change
§ 47-4-90	State	Statute	Stop of livestock transport to check for proper documentation.	Requires a service		No Change
§ 47-6-20	State	Statute	Definitions.	Requires a service		No Change
§ 47-6-30	State	Statute	Authority of state veterinarian and Livestock-Poultry Health Service of Clemson University.	Requires a service		No Change
§ 47-6-40	State	Statute	Notification; investigation; public notice; elimination of disease from herd.	Requires a service		No Change
§ 47-6-50	State	Statute	Imported swine.	Requires a service		No Change
§ 47-6-60	State	Statute	Violation of chapter as misdemeanor; penalties.	Requires a service		No Change
46-10-10 et seq	State	Statute	Provides for Clemson to operate and administer a Boll Weevil Eradication Program.	Requires a service	Enforcement of State Regulations	No Change
46-13-10 et seq	State	Statute	Provides for Clemson to operate a pesticide program in South Carolina.	Requires a service	Enforcement of State Regulations	No Change

Law number	Jurisdiction	Type	Description	Purpose the law serves:	Notes:	Changes made during FY2025
46-21-610 et seq.	State	Statute	Provides for Clemson to operate a program of seed and plant certification to foster the production and distribution of pure varieties of seed and plants in South Carolina.	Requires a service	Requires Clemson to have a Seed and Plant Certification program.	No Change
46-23-10 et seq	State	Statute	Provides for Clemson to regulate noxious weeds throughout the state.	Requires a service	Enforcement of State Regulations	No Change
46-25-10 et seq	State	Statute	Provides for Clemson to regulate the inspection, analysis, distribution and sale of commercial fertilizers.	Requires a service	Enforcement of State Regulations	No Change
46-26-10 thru 46-26-170	State	Statute	Agricultural liming materials and landplaster	Requires a service		No Change
46-33-10 thru 46-33-100	State	Statute	Shipment and Sale of Trees, Plants, and Shrubs	Requires a service		No Change
46-35-10 et seq	State	Statute	Provides the Director of Regulatory and Public Service Programs shall regulate neglected or abandoned fruit orchards in the State.	Requires a service	Enforcement of State Regulations	No Change
46-37-10 et seq	State	Statute	Provides for Clemson to regulate the shipment and movement of honey bees throughout the state.	Requires a service	Enforcement of State Regulations	No Change
46-9-10 et seq	State	Statute	Provides for the creation of the State Crop Pest Commission to carry out the regulation and/or eradication of certain plant pests and diseases.	Requires a service	Enforcement of State Regulations	No Change
47-4-10 et seq	State	Statute	Establishes the State Livestock Poultry Health Commission; delegates authority to State Veterinarian, establishes penalties for violations and further authority to promulgate regulations.	Requires a service	State Animal Health Authority	No Change

2025		<div>Services Data</div> <div>as submitted for the Accountability Report by:</div> <div>P200 - CLEMSON UNIVERSITY - PSA</div>						
Description of Service	Description of Direct Customer	Customer Name	Others Impacted by Service	Division or major organizational unit providing the service.	Description of division or major organizational unit providing the service.	Primary negative impact if service not provided.	Changes made to services during FY2025	Summary of changes to services
Protects health and marketability of livestock and poultry and products in the state, inspects meat and poultry products in state inspected plants and protects public health in SC.	All animal agriculture (Poultry, Beef, Dairy, Swine, Equine, Sheep, Goats, Meat slaughter and processing, Zoos, etc.) & veterinarians	Animal industry producers, processors, and consumers, and veterinarians	National and international animal industry producers, processors and consumers.	Livestock-Poultry Health Programs	Ensures the continued health of the livestock and poultry industry, ensure safe, wholesome, properly labeled meat and poultry products.	Animal health more at risk to foreign animal and emerging diseases in the livestock and poultry industries; unable to ensure safe, wholesome properly labeled meat and poultry products.	No Change	
Scientists work to improve the quality of life for people in South Carolina, the nation, and the world by providing science-based information on major issues facing decision makers.	Producers, Commercial and small farmers; academic institutions; researchers	Ag and natural resources government agencies and NGOs.	Agencies, scientists, farmers, ranchers, homeowners, and general population depending on topic.	Clemson Experiment Station	Conducts research to identify critical issues and find solutions through research that support South Carolina's agriculture and forest industries.	Decreased economic returns and/or negative impacts on sustainability and the environment.	No Change	
Agents meet the diverse needs of S. C. citizens by delivering research-based information on Agrisystems Productivity and Profitability, Environmental and Natural Resource Conservation, Food Safety and Nutrition, Agribusiness, and 4-H Youth Development.	Youth ages 5-19 --- All gender, all Economic Income levels, all education levels; Adult audience --- commercial and small farmers, landowners, professionals, all gender, all income levels, all education levels	SC Citizens	All Citizens	Cooperative Extension Service	Improve the economy, environment, and well-being of South Carolinians through the delivery of unbiased research-based information and education.	Decreased economic returns, decreased crop production, decrease in sustainable practices, decreased quality of life due to chronic health conditions, decreases in youth development opportunities	No Change	
The Department of Pesticide Regulation works to protect health, property, and our environment by promoting the safe and proper use of pesticides. Our programs include applicator licensing and education, pesticide container recycling, integrated pest management in schools, endangered species protection, and the worker protection program. Pesticide Regulation is the enforcement and investigative authority in South Carolina for pesticide use, alleged pesticide misuse, substandard termite treatments, and the South Carolina Wood Infestation Report.	All pesticide users	Citizens of South Carolina	South Carolina agricultural business	Dept. of Pesticide Regulation	Regulatory and Public Service Agency with Clemson University	Citizens of South Carolina being taken advantage of and not having any legal recourse	No Change	



Description of Service	Description of Direct Customer	Customer Name	Others Impacted by Service	Division or major organizational unit providing the service.	Description of division or major organizational unit providing the service.	Primary negative impact if service not provided.	Changes made to services during FY2025	Summary of changes to services
The Department of Plant Industry's Seed Program works to serve the farmers who grow certified seed crops. The service is to provide inspections/approvals/disapprovals by AOSCA standards for crop to be certified in the program.	Growers	Citizens of South Carolina and all farmers in the state	South Carolina agricultural business	Dept. of Plant Industry - Seed Program	Regulatory and Public Service Agency with Clemson University	Seeds not being certified and the farmers not getting the yield that they need for economy	No Change	
The Department of Plant Industry's Fertilizer Program aims to control quality and guarantees of all fertilizer, lime, landplaster sold in South Carolina.	All farmers or purchasers of fertilizer in South Carolina	Citizens of South Carolina and all farmers in the state	South Carolina agricultural businesses	Dept. of Plant Industry - Fertilizer Program	Regulatory and Public Service Agency with Clemson University	Fertilizer not being what the label states and the farmers not getting the yield that they need for economy	No Change	
The Department of Plant Industry's Fertilizer Program works to serve the industry for all fertilizers/lime/ and landplaster manufacturers and dealers in South Carolina by AAPFCO recognized guidelines.	Fertilizer Industry	Citizens of South Carolina and all farmers in the state	South Carolina agricultural businesses	Dept. of Plant Industry - Fertilizer Program	Regulatory and Public Service Agency with Clemson University	Fertilizer, lime and landplaster not being at standard what the label states and the farmers not getting the yield that they need for economy	No Change	
To provide information and analytical testing of soil, plant tissue, feed and forage, animal waste, irrigation water, and compost.	Individual clients, commercial dealers, Extension Agents, Extension Specialists, and researchers in South Carolina	Citizens of South Carolina, commercial dealers, Extension Agents, and specialists along with researchers	South Carolina agricultural businesses	Agricultural Service Lab	Regulatory and Public Service Agency with Clemson University	This protects the consumer to make sure the soil is tested and the yield of the crop is plentiful	No Change	
Do pest surveys and related monitoring programs.	Citizens of South Carolina	SC Citizens	SC agricultural businesses	Dept of Plant Industry - Nursery Program	Regulatory and Public Service Agency with Clemson University	Pest survey and related monitoring programs not performed.	No Change	

2025	<b><u>Partnerships Data</u></b> as submitted for the Accountability Report by: <b>P200 - CLEMSON UNIVERSITY - PSA</b>		
	Type of Partner Entity	Name of Partner Entity	Description of Partnership
	Change to the partnership during the past fiscal year		
State Government	SC State Diagnostic and Veterinary Lab	Provides laboratory analysis of investigative samples pertaining to domestic or animal kills as a result of accidental or intended pesticide poisonings. Also performs all necropsies on animals that are suspected of being intentionally, illegally poisoned by a pesticide.	No Change
Higher Education Institute	South Carolina State University	Funding and program partners on the SET IV Program which is designed to develop regional agriculture, food system and rural economic development initiatives	No Change
Federal Government	US EPA	Through a cooperative agreement, DPR serves as the State Lead Agency charged with investigating civil and criminal violations of the Federal Insecticide, Fungicide and Rodenticide Act.	No Change
Professional Association	AAPCO	Oversees the State FIFRA Issues Research and Evaluation Group (SFIREG). SFIREG and it's working committees provide a platform for the states and EPA to resolve challenges to successful implementation of pesticide programs and policies in the USA and territories.	No Change
Professional Association	AgSouth	Partner to provide educational programming	No Change
Local Government	Allendale Correctional Institute	Provide information on entrepreneurship, business planning and agribusiness	No Change
Private Business Organization	AnMed Health	Partnered to help provide health, wellness, nutrition and food information	No Change
Professional Association	Arbor One Farm Credit	Partnered to provide technical assistance with workshops, programs, and field days.	No Change

Type of Partner Entity	Name of Partner Entity	Description of Partnership	Change to the partnership during the past fiscal year
Private Business Organization	ArborGen	Partnered to provide technical assistance with workshops, programs, and field days.	No Change
Professional Association	ASPCRO	Promote better understanding and efficiency in the administration of laws and other written documents of regulatory authority between states concerning the control and eradication of pests of structures and their immediate environs.	No Change
Private Business Organization	Briggs & Stratton Corporation	Supplied training materials and engines for youth engagement programs	No Change
Non-Governmental Organization	Catawba Farm and Food Coalition	Partner to promote the purchase of locally grown and produced foods, to keep valuable agricultural land in production, to ensure the economic viability of farms, to benefit public and environmental health and to strengthen our regional economy.	No Change
Non-Governmental Organization	Center for Heirs Property Preservation	Partnered to provide technical assistance with workshops, programs, and field days.	No Change
State Government	Clemson University Police Department	Serves as training support, firearms, legal update, maintain officer personnel files. Through their terminal load DPR arrest warrants into the NCIC database.	No Change
State Government	Criminal Justice Academy	Provides initial training and certification of all DPR certified law enforcement officers. SCCJA provides periodic training and yearly re-certifications.	No Change
Non-Governmental Organization	Daufuskie Island Conservancy	Present information to local residents on backyard design for wildlife	No Change
State Government	Department of Health and Environmental Control	Partnered to deliver information to staff on various aspects of natural resources management	No Change
Federal Government	EPA CID	Provides periodic firearms trainings, presents talks on the fourth amendment. Special agents accompany DPR law enforcement on occasion into the field to work parallel investigations.	No Change

Type of Partner Entity	Name of Partner Entity	Description of Partnership	Change to the partnership during the past fiscal year
Federal Government	ES EPA	Criminal Investigations Division Special Agents routinely work with DPR law enforcement where the interests of the state of SC and the United States Government coincide.	No Change
Private Business Organization	Greenville Health System	Partnered to help provide health, wellness, nutrition and food information	No Change
Non-Governmental Organization	Gullah Farmers Cooperative	Partnership to apply for Socially Disadvantaged Groups Grant through USDA	No Change
Federal Government	Natural Resources Conservation Service	Partnered to provide technical assistance with workshops, programs, and field days.	No Change
Higher Education Institute	Land-grant universities	Collaborative research projects	No Change
Non-Governmental Organization	Pee Dee Land Trust	Partnered to provide technical assistance with workshops, programs, and field days.	No Change
Higher Education Institute	Piedmont Technical College	Offer adult education and professional development for entrepreneurs	No Change
Non-Governmental Organization	National Deer Association	Partnered to deliver online content concerning the management of white-tailed deer and assisted with food plot projects	No Change
State Government	SC Attorney General	DPR CID maintains a close working relationship with Assistant Attorney General assigned to environmental crimes. AG provides legal advice, assists in the drafting of search and arrest warrants, prosecutes all DPR cases assigned to General Sessions Trials, and prepares Departmental indictments for officer testimony in front of the Grand Jury.	No Change
Local Government	SC County Governments	Quarterly meetings allows partners to communicate planned activities and share opportunities for partnering.	No Change
State Government	SC Department of Agriculture	Partnered to provide technical assistance with workshops, programs, and field days.	No Change

Type of Partner Entity	Name of Partner Entity	Description of Partnership	Change to the partnership during the past fiscal year
State Government	SC Department of Agriculture	Partnered to provide educational programming. DPR works closely with the DoA as a result of mutual interests concerning SC agriculture. Partners with the Agribusiness Team to grow the agriculture industry in SC overall in commercial agriculture production and local food systems.	No Change
K-12 Education Institute	SC Department of Education	Co-hosted a hands-on workshop for the School Gardening program	No Change
State Government	SC Department of Natural Resources	Partnered to provide technical assistance with workshops, programs, and field days.	No Change
State Government	SC Department of Natural Resources	Often conduct joint criminal investigations of environmental crimes with DNR Law Enforcement. Partner to prevent and control wildlife diseases.	No Change
State Government	SC DHEC	Collaboration on zoonotic disease reporting and testing	No Change
State Government	SC DMV	Supplies crucial vehicle and driver information which enables DPR to run vehicle license plates. Access to this restricted information is through a joint agreement between DPR, DMV and SLED.	No Change
K-12 Education Institute	SC Elementary, Middle and High Schools	To provide educational programming (i.e. school enrichment, field trips, after school programs)	No Change
Non-Governmental Organization	SC Peanut Growers	Partnered to provide technical assistance with workshops, programs, and field days.	No Change
Private Business Organization	SC State Fair	Partnered to deliver information on scrapies in sheep, 4-H programs, tractor driving CDE and gardening	No Change
State Government	SC State Parks	Partnered to provide technical assistance with workshops, programs, and field days.	No Change

Type of Partner Entity	Name of Partner Entity	Description of Partnership	Change to the partnership during the past fiscal year
Professional Association	SCPCA	Work closely with SCPCA which is a member-funded, non-profit organization committed to protecting public health, food and property from pests.	No Change
State Government	SLED	DPR and the SC Law Enforcement Division have developed an exceptional working relationship by way of a seamless exchange of information with the agents that operate the Fusion Center. SLED provides potential lifesaving information through NCIC data and criminal history information of targets of criminal investigations. DPR – CID law enforcement all hold their commission through SLED.	No Change
Federal Government	Soil and Water Conservation Service	Partnered to provide technical assistance with workshops, programs, and field days.	No Change
State Government	South Carolina Forestry Commission	Multiple grants	No Change
Professional Association	South Carolina Master Gardeners	Work with 4-H Gardening Project and also with county gardening programs in the schools	No Change
Private Business Organization	Tractor Supply	Partnered to provide technical assistance with workshops, programs, and field days.	No Change
Federal Government	US Customs and Border Patrol	Contact DPR agents when shipments of mis-branded, illegal or otherwise questionable pesticides are processed through Customs.	No Change
Federal Government	US Dept. of Homeland Security	Has on multiple occasions ask for the assistance of DPR agents to run joint investigations where pesticides are being shipped illegally into the US from other countries of origin.	No Change
Federal Government	USDA	The USDA funds Experiment Station projects and all research results are reported annually to the USDA.	Amend



Type of Partner Entity	Name of Partner Entity	Description of Partnership	Change to the partnership during the past fiscal year
Federal Government	USDA APHIS VS AND WILDLIFE SERVICES	Livestock & Poultry Animal Health disease prevention, surveillance, control and eradication	No Change
Federal Government	USDA FSIS	Matching funds and oversight of state meat inspection	No Change
Federal Government	USGS South Carolina Cooperative Fish and Wildlife Research Unit	Conduct research focused on conservation and ecology of seabirds and shorebirds, and wildlife conservation physiology relevant to South Carolina.	No Change
Federal Government	FEDERAL BUREAU OF INVESTIGATIONS	During a high suspicion foreign animal disease investigation, the Federal Bureau of Investigation may participate with the foreign animal disease diagnostician to rule out an agroterrorism event. The agency will assist investigating cybersecurity incidences such as a database breach. The agency may participate in exercises and planning events.	No Change
Federal Government	USDA APHIS	Dept of Plant Industry partners with the USDA APHIS on multiple grants.	No Change

2025

**Reports Data**

as submitted for the Accountability Report by:

P200 - CLEMSON UNIVERSITY - PSA

Report Name	Law Number (if applicable)	Summary of information requested in the report	Date of most recent submission DURING the past fiscal year	Reporting Frequency	Type of entity/entities	Method to access the report	Direct access hyperlink or agency contact (if not provided to LSA for posting online)	Changes to this report during the past fiscal year	Explanation why a report wasn't submitted
Comprehensive Review and Determination Report - South Carolina		Comprehensive: 1- Statutory Authority and Food Safety Regulations; 2- Inspection; 3- Product Sampling; 4- Staffing, Training, and Supervision; 5- Humane Handling; 6- Compliance; 7- Laboratory Methods and Quality Assurance Program; 8- Civil Rights; 9- Financial Accountability	April 2023	Annually	Entity within federal government	Available on another website	<a href="https://www.fsis.usda.gov/sites/default/files/media_file/2021-02/state-review-south-carolina.pdf">https://www.fsis.usda.gov/sites/default/files/media_file/2021-02/state-review-south-carolina.pdf</a>	No Change	
NIFA Annual Plan of Work	5 U.S.C. 301; 31 U.S.C. 901-903; 7 CFR 2.28.	Plans of work that show how future expenditures will be utilized to meet the needs of South Carolinians in the areas of Research and Extension	June 2025	Annually	Entity within federal government	Available on agency's website	<a href="https://reeis.usda.gov/areera/search/2007/to-date?state=All&amp;year=All&amp;doctype%5B%5D=REPORT">https://reeis.usda.gov/areera/search/2007/to-date?state=All&amp;year=All&amp;doctype%5B%5D=REPORT</a>	No Change	
NIFA Annual Report of Accomplishments	5 U.S.C. 301; 31 U.S.C. 901-903; 7 CFR 2.28.	Annual report of accomplishments for research and extension	April 2025	Annually	Entity within federal government	Available on agency's website	<a href="https://reeis.usda.gov/areera/search/2007/to-date?state=All&amp;year=All&amp;doctype%5B%5D=REPORT">https://reeis.usda.gov/areera/search/2007/to-date?state=All&amp;year=All&amp;doctype%5B%5D=REPORT</a>	No Change	
Results and Final reports on all NIFA related projects	5 U.S.C. 301; 31 U.S.C. 901-903; 7 CFR 2.28.	Progress of research on 5-year federal projects	March 2025	Annually	Entity within federal government	Available on agency's website	<a href="https://nrs.nifa.usda.gov/portal">nrs.nifa.usda.gov/portal</a>	No Change	

<b>AGENCY NAME:</b>	Clemson University - PSA		
<b>AGENCY CODE:</b>	P200	<b>SECTION:</b>	045

**2025**  
**Accountability Report**

**SUBMISSION FORM**

I have reviewed and approved the data submitted by the agency in the following templates:

- Data Template
  - Reorganization and Compliance
  - FY2025 Strategic Plan Results
  - FY2026 Strategic Plan Development
  - Legal
  - Services
  - Partnerships
  - Report or Review
  - Budget
- Discussion Template
- Organizational Template

I have reviewed and approved the financial report summarizing the agency’s budget and actual expenditures, as entered by the agency into the South Carolina Enterprise Information System.

The information submitted is complete and accurate to the extent of my knowledge.

<b>AGENCY DIRECTOR</b> <i>(SIGN AND DATE):</i>  <b>(TYPE/PRINT NAME):</b>	<b>SIGNATURE ON FILE</b>	<b>Signature Received:</b> 09/17/2024
	Dr. Matthew Holt, Dean of CAFLS and Vice President for PSA	

<b>BOARD/CMSN CHAIR</b> <i>(SIGN AND DATE):</i>  <b>(TYPE/PRINT NAME):</b>	<b>SIGNATURE ON FILE</b>	<b>Signature Received:</b> 09/17/2024
	Ms. Kim A. Wilkerson, Chair, Board of Trustees- Clemson University	